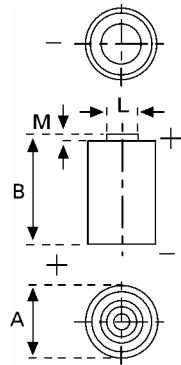


Data Sheet



Type Number 6202
Designation IEC ---
System Li-Manganese dioxide / Organic Electrolyte

UL Recognition:..... MH 13654 (N)
Nominal Voltage 3 V
Typical Capacity C 1500 mAh
 Load 1.0 kOhm, at 20°C down to 2 V

Weight (approx.) 13 g
Volume 5,9 ccm
Coding..... TBA

Temperature Ranges min max.
 Storage -55°C 75 °C
 Discharge 20°C 70°C

Dimensions min max.
 Diameter (A) 11,25 11,6
 Height (B) 59 60
 Shoulder Diameter[L]..... 3
 Shoulder Height [M]..... 1,5

Segment Electronic

Main Applications Electronic

Typical Capacities (at 20°C)

Discharge Type	Load	End Voltage:	2.0 V
Continuous 24h/d,7d/w	1000 Ω	Time:	540 h
		Capacity [mAh]:	1500

All Data contained herein is for single cells
 For battery applications, performance data may vary from single cell data, depending on specific battery configuration