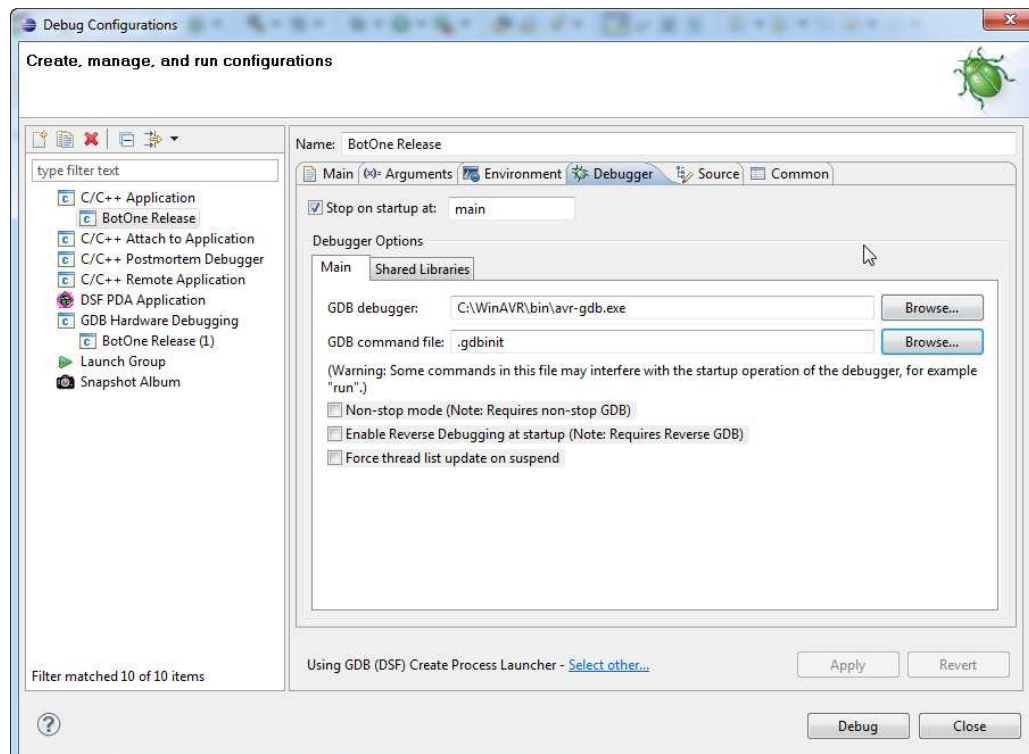
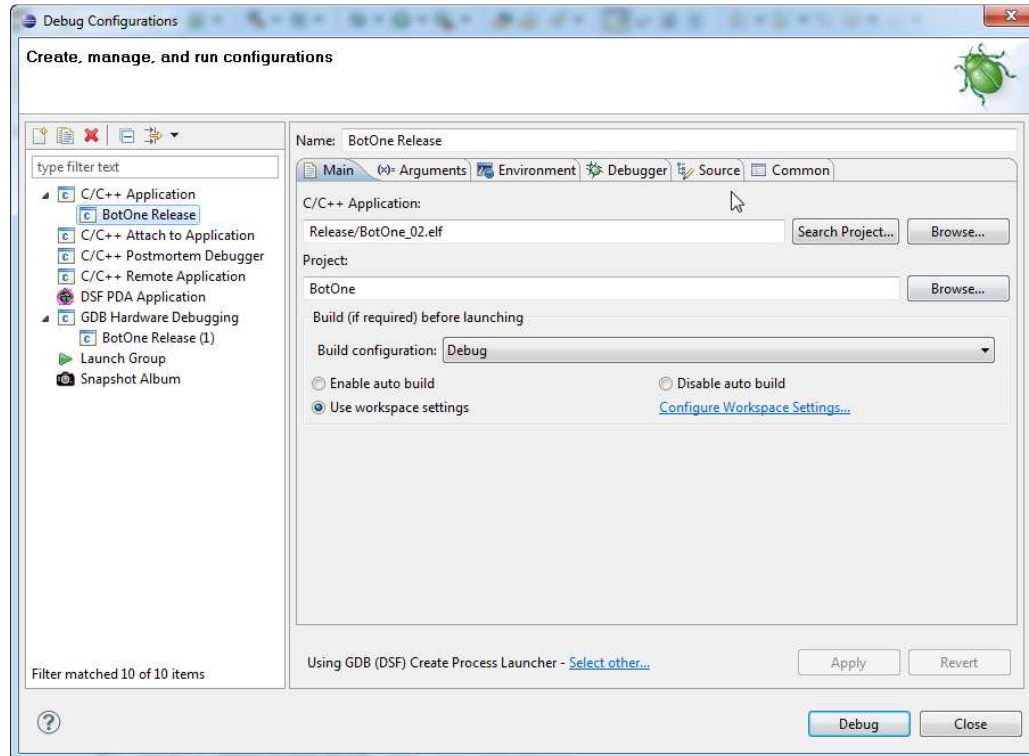


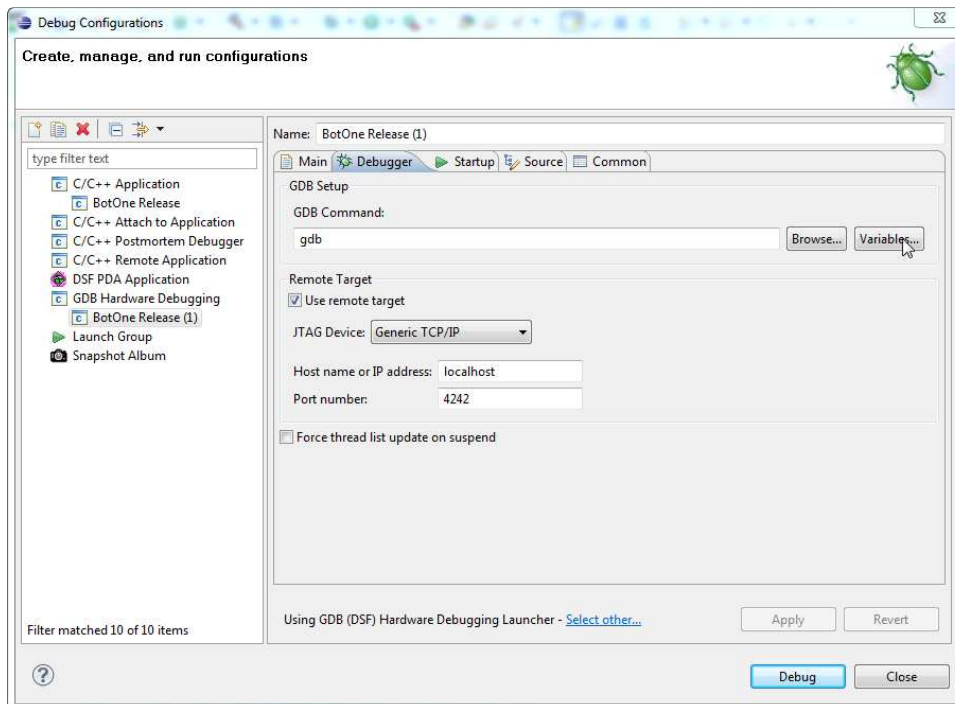
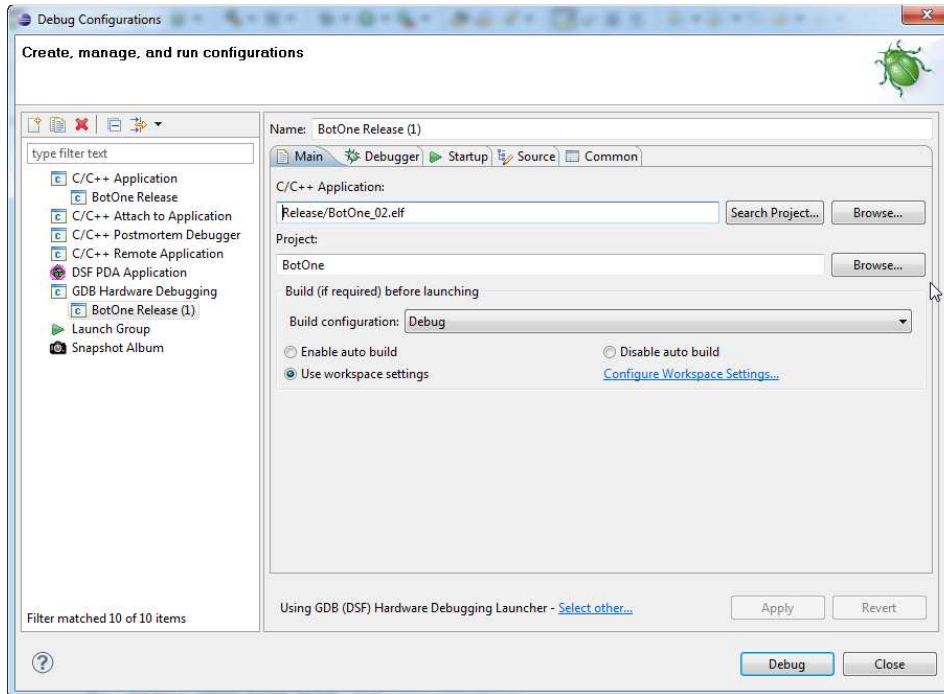
Debugging with Dragon

http://avr-eclipse.sourceforge.net/wiki/index.php/Debugging#Eclipse_Debug_Configurations

C/C++ Application



GDB Hardware Debugging



Auf avr-gdb geändert.

In anderen Versionen wurde ein gdbserver Debugger ausgewählt. Den finde ich nicht mehr

