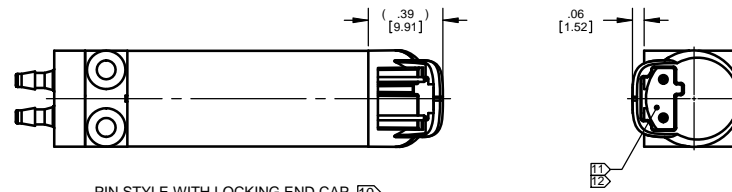
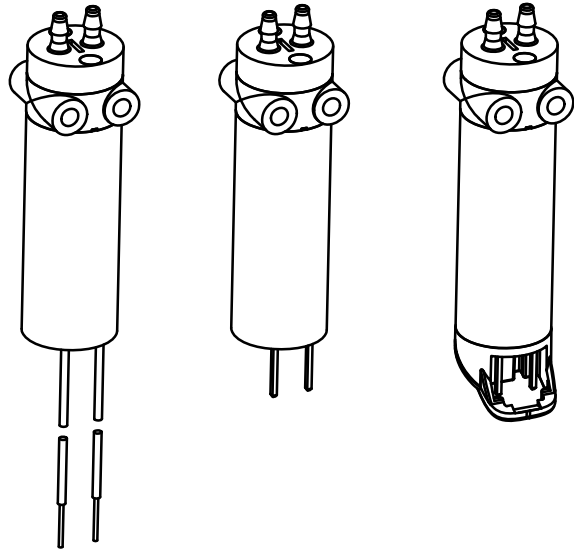


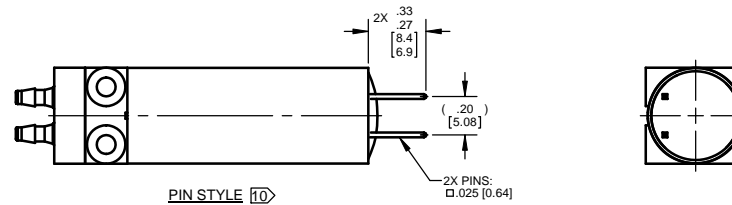
DWG. NO.  
LFVA0020000C

PROPRIETARY ITEM  
This document contains proprietary information and is submitted upon the express condition that the information contained herein will not be used directly or indirectly in any way detrimental to the interests of the Lee Company, and/or violation of regulation DAR 7-104.9 (a) (1 July 1974), et seq.

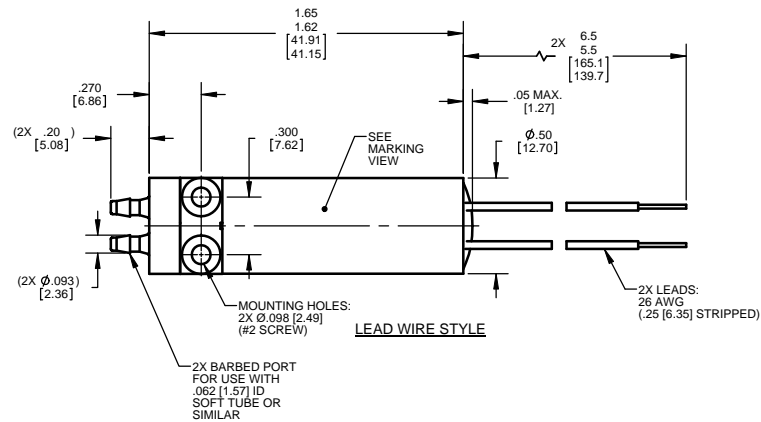
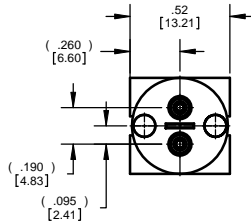
REV	DATE	BY	DESCRIPTION
A7	07/19/10	DKR	ADDED PIN STYLE VALVE WITH LOCKING END CAP. NOTES 10, 11 & 12. UPDATED MATRIX, DWG WAS "B" SIZE



PIN STYLE WITH LOCKING END CAP 10

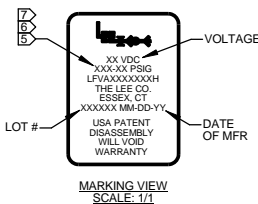


PIN STYLE 10



LEAD WIRE STYLE

- NOTES:
1. WETTED SURFACES OF VALVE: PEEK. (SEE P/N MATRIX).
  2. OPERATION: 2-WAY, NORMALLY CLOSED, BI-DIRECTIONAL FLOW.
  3. POWER REQUIREMENTS: 1.5 WATT AT NOMINAL VOLTAGE.
  4. LOHM RATE: 1000 LOHMS NOMINAL.
  5. OPERATING PRESSURE RANGE: 25 in. Hg VACUUM-30 PSIG.
  6. OPERATING PRESSURE RANGE: 1-30 PSIG.
  7. OPERATING PRESSURE RANGE: 25 in. Hg VACUUM-20 PSIG.
  8. INTERNAL VOLUME: .43 in<sup>3</sup> (ZERO DEAD VOLUME). BARB END TO BARB END.
  9. RECOMMENDED MOUNTING TORQUE: 4-6 IN-OZ [0.028-0.042 N-m].
  10. LEAD WIRE, PIN STYLE VALVE & PIN STYLE VALVE WITH LOCKING END CAP DIMENSIONS ARE EQUIVALENT UNLESS OTHERWISE SPECIFIED.
  11. MATING CONNECTOR HOUSING, AMP P/N: 104257-2.
  12. 6 INCH LEAD WIRE ASSEMBLY AVAILABLE WITH MATING CONNECTOR HOUSING, SEE LEE CO. PART NUMBER LSWX0504300A.



MARKING VIEW  
SCALE: 1/1

PART NUMBER MATRIX									
		SEAL MATERIAL							
OPERATING VOLTAGE	LEAD WIRE / PIN STYLE	FKM 5 ELASTOMER	REV.	EPDM 6 ELASTOMER	REV.	FFKM 7 ELASTOMER	REV.	FFKM 7 ELASTOMER	REV.
5 VDC	LEAD WIRE	LFVA0520110H	A	LFVA0520210H	A	LFVA0520310H	A	LFVA1220410H	A
12 VDC	LEAD WIRE	LFVA1220110H	A	LFVA1220210H	A	LFVA1220310H	A	LFVA2420410H	A
24 VDC	LEAD WIRE	LFVA2420110H	A	LFVA2420210H	A	LFVA2420310H	A	LFVA2420410H	A
5 VDC	PIN	LFVA0521110H	A	LFVA0521210H	A	LFVA0521310H	A	LFVA1221410H	A
12 VDC	PIN	LFVA1221110H	A	LFVA1221210H	A	LFVA1221310H	A	LFVA2421410H	A
24 VDC	PIN	LFVA2421110H	A	LFVA2421210H	A	LFVA2421310H	A	LFVA2421410H	A
5 VDC	PIN WITH CAP	LFVA0522110H	A	LFVA0522210H	A	LFVA0522310H	A	LFVA1222410H	A
12 VDC	PIN WITH CAP	LFVA1222110H	A	LFVA1222210H	A	LFVA1222310H	A	LFVA2422410H	A
24 VDC	PIN WITH CAP	LFVA2422110H	A	LFVA2422210H	A	LFVA2422310H	A	LFVA2422410H	A

-FMF- THE LEE CO. ESSEX, CT	DO NOT SCALE DRAWING UNLESS OTHERWISE SPECIFIED DIMENSIONS ARE IN INCHES (mm)	DRAWN DKR	06/30/94	TITLE MIV-1/16 BARBED PORT
	TOLERANCES: XXX ±.015 [0.38] XXX ±.006 [0.13] XXX ±.001 [0.025] ANGLES ±.2°	CHKD DDE	11/29/10	SIZE C
NOTES AND DIMENSIONS SHOWN HEREON ARE FOR INSPECTION IDENTIFICATION ONLY. ALL MANUFACTURING RIGHTS ARE RESERVED.	INT CORNER R .01 [0.25] MAX EXT CORNER R .01 [0.25] MAX SURFACE FINISH √ [1.60]	APP'D BWH	12/02/10	CODE IDENT NO ONZR4
		MATERIAL SEE NOTE 1	THIRD ANGLE PROJECTION	DWG. NO. LFVA0020000C
				REV A7

MODEL NO. LFVD0360000	REV. 15	SW	REF. NO.
--------------------------	------------	----	----------

SCALE: 2:1	SHEET 1 OF 1
------------	--------------

SPS DWG 2008-03-08