

# USER MANUAL for USB Data Link

## Driver Installation Under Win 95 OSR2.1

1.Step1: Double click "My Computer" "System Properties" "Device Manager"

Step2: While installing USB Data Link Cable under Windows 95 OSR2.1 mode, make sure "Universal Serial Bus Controller" is displayed under "Device Manager" first. If not, please refer to the Microsoft Web site at [www.microsoft.com](http://www.microsoft.com) to find the Windows 95 USB support update file.

Step3: Plug in the Data Link Cable to the USB connector of your computer. See Figure 1

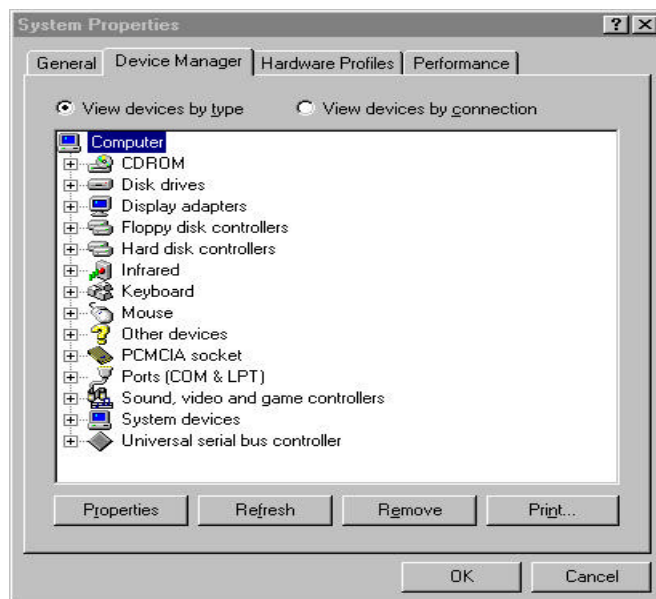


Figure 1

2. Step 1:Place the CD Driver supplied with your USB Data Link into the CD ROM.

Step 2: Enter the PC Data Link driver(V1.6) subdirectory and click "Setup" icon. See Figure 2

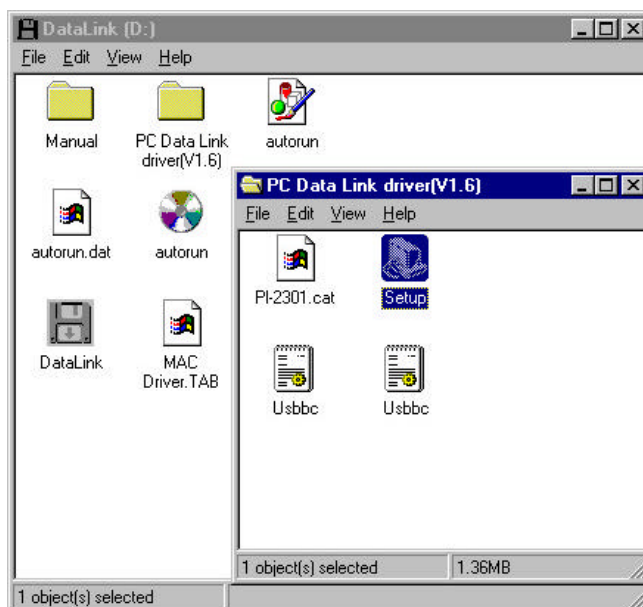


Figure 2

# USER MANUAL for USB Data Link

3. Click "Next" at the Welcome screen. See Figure 3

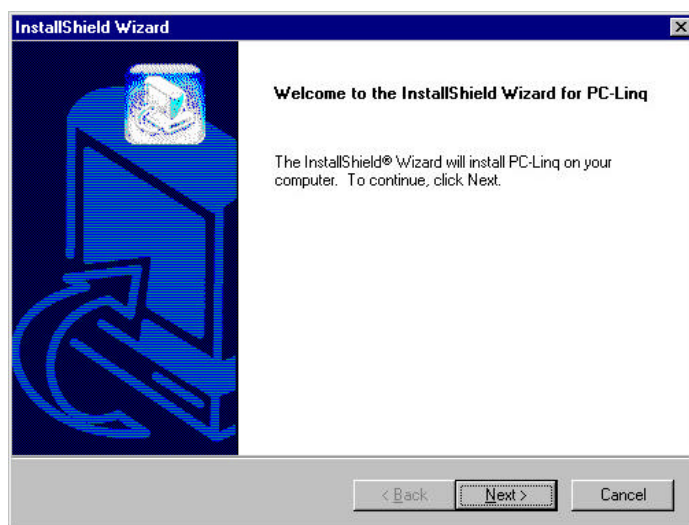


Figure 3

4. Click "Next" at the "Choose Destination Location" screen. See Figure 4

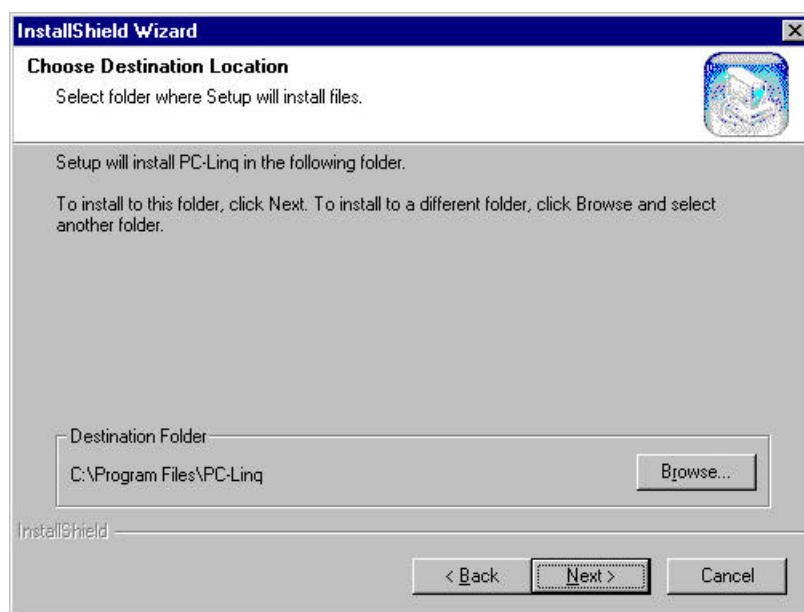


Figure 4

# USER MANUAL for USB Data Link

- Click " Next " to continue. (Type a new folder name or select one from existing folder list.) Then, click "Finish" button. See Figure 5

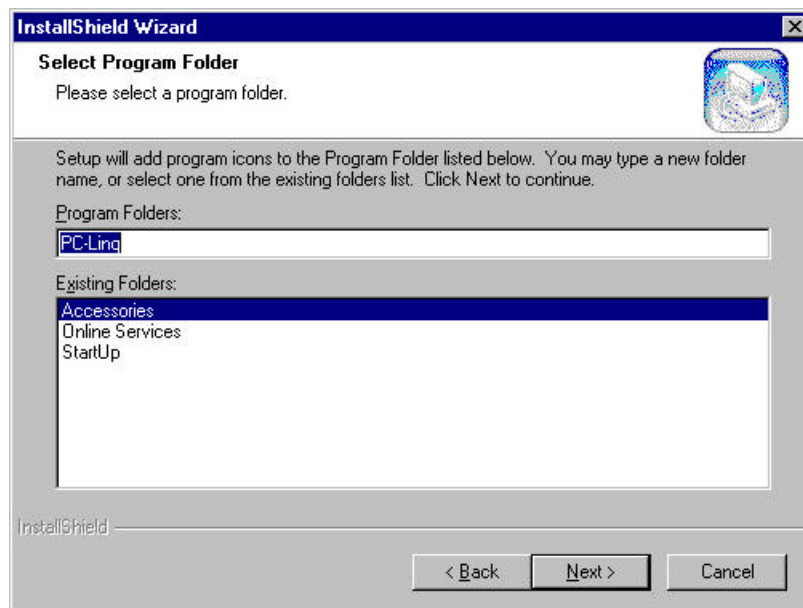


Figure 5

- Return back to the "Device Manager" under " System Properties" and check if "USB Bridge Cable" is displayed, then click the "OK" and restart your computer to complete your installation. See Figure 6

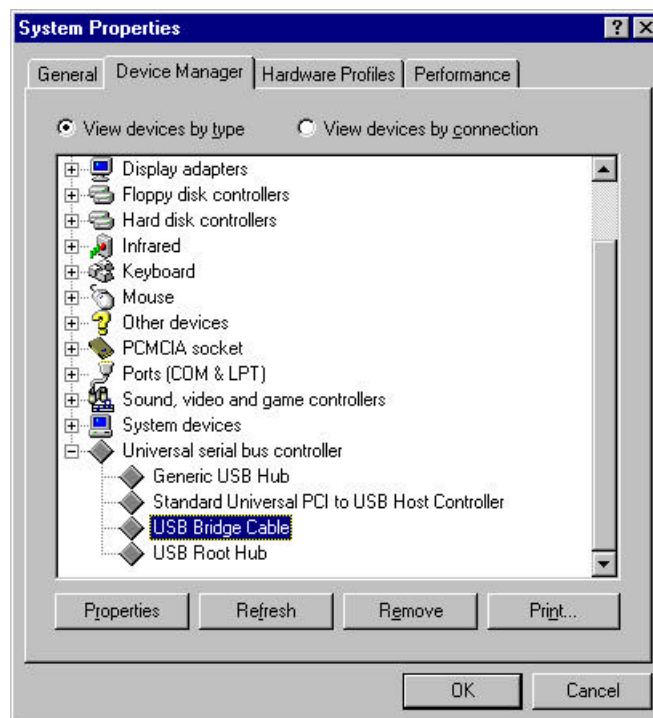


Figure 6

# USER MANUAL for USB Data Link

7. After restarting your computer, the PC-Linq icon will be displayed on the desktop. See Figure 7

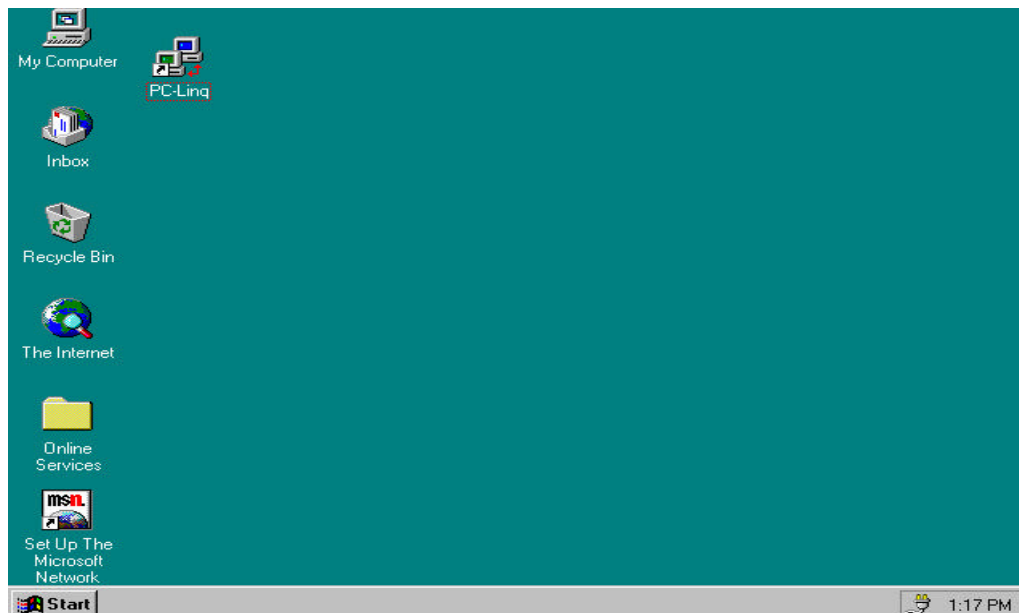


Figure 7

8. Repeat the same procedure (1-7) with the other computer. And, click both computers' PC-Linq icons, then you can see the "Local Machine" & "Remote Machine" windows to start transferring data between the two connected computers. See Figure 8

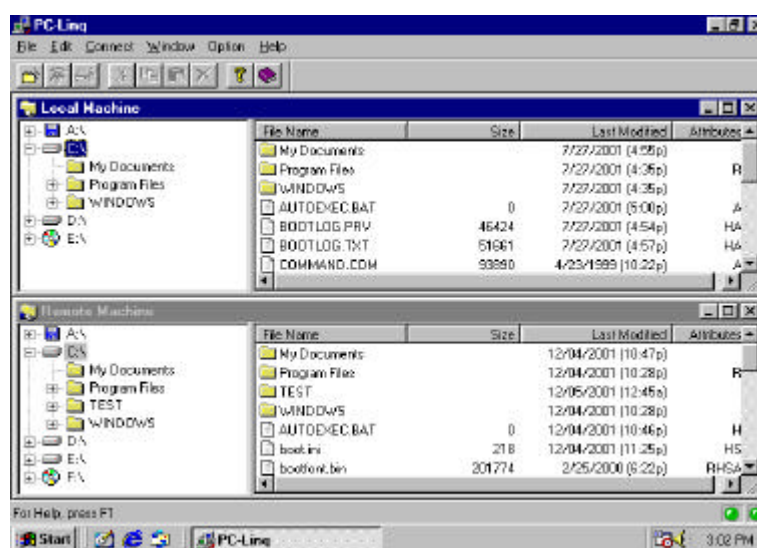


Figure 8

# USER MANUAL for USB Data Link

## Driver Installation Under Win 98 / 98 SE / ME

1. Step 1: Plug in the Data Link Cable to the USB connector of your computer.
- Step 2: Click " next" at the Add New Hardware Wizard screen. See Figure 1



Figure 1

2. Click " next " to search for the best driver for your device. (Recommended) See Figure 2



Figure 2

# USER MANUAL for USB Data Link

3.Specify “PC Data Link Driver (V1.6) “ folder under CD ROM driver and click” Next “ See Figure 3



Figure 3

4.Windows driver file will search for the USB Bridge Cable, click " next " to continue. See Figure 4



Figure 4

# USER MANUAL for USB Data Link

5. Windows has successfully finish installing USB Bridge Cable software, click "Finish" button to close the Wizard. See Figure 5



Figure 5

6. Step 1: Place the CD Driver supplied with USB Data Link into the CD ROM.  
Step 2: The InstallShield® Wizard will install PC-Linq on your computer. Click "next" to continue.  
See Figure 6

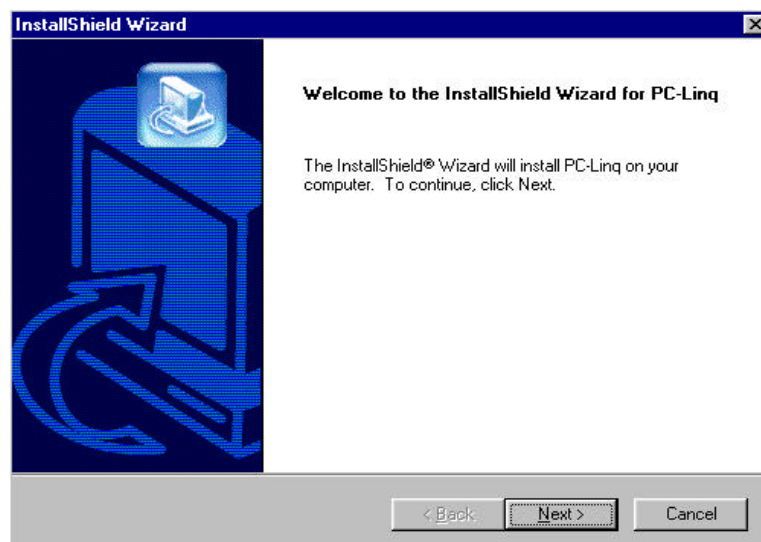


Figure 6

# USER MANUAL for USB Data Link

7. Click "next" at the "Choose Destination Location" screen. See Figure 7

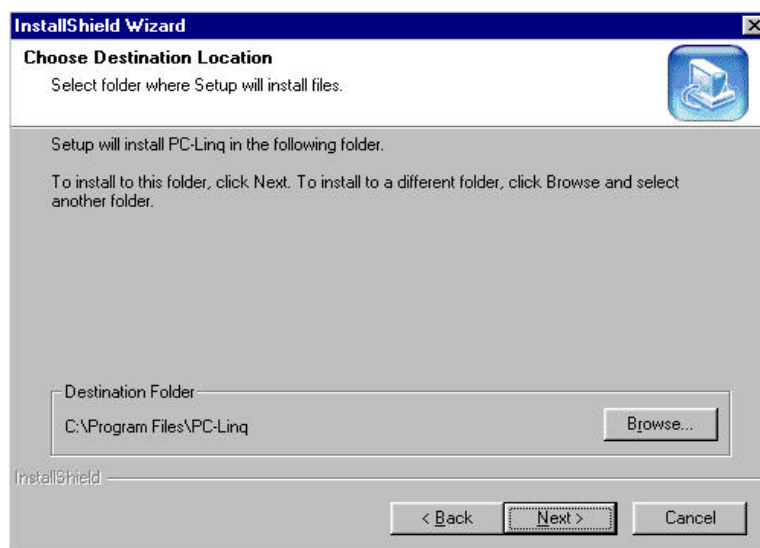


Figure 7

8. Type a new folder name or select one from the existing folders list. Click "next" to continue. See Figure 8

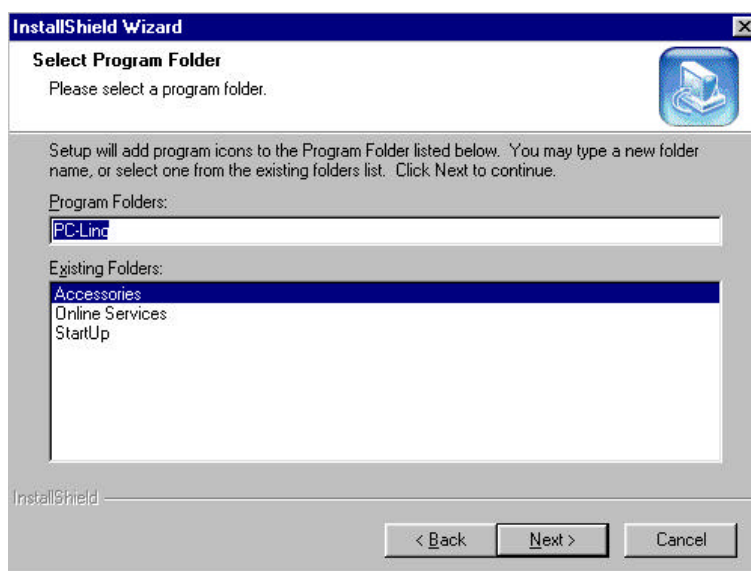


Figure 8



# USER MANUAL for USB Data Link

9. PC-Linq icon will be displayed on the desktop. See Figure 9



Figure 9

10. Return to the "Device Manager" under "System Properties" and check if "USB Bridge Cable" is displayed. Then, click the "OK" and restart your computer to complete your installation. See Figure 10

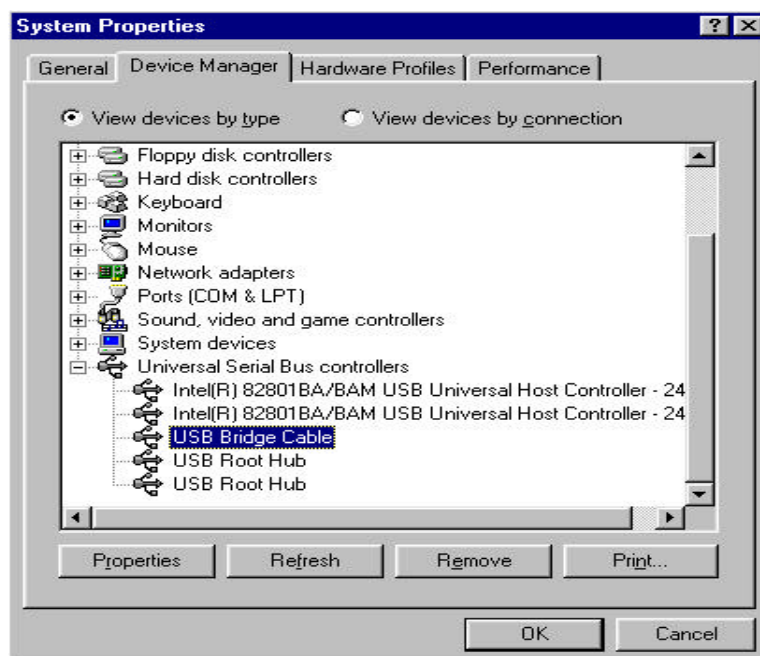


Figure 10

# USER MANUAL for USB Data Link

11. Repeat the same procedures (1-10) with the other computer. And, click both computers' PC-Linq icons, then you can see the "Local Machine" and "Remote Machine" windows to start transferring data between the two connected computers. See Figure 11

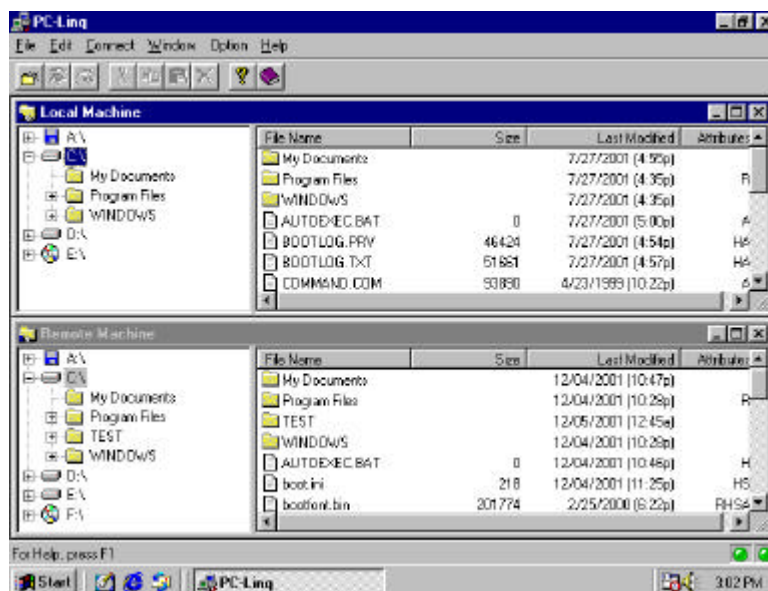


Figure 11

# USER MANUAL for USB Data Link

## Driver Installation Under Win 2000

1. Step 1: Plug in the Data Link Cable to the USB connector of your computer.

Step 2: Click "next" at the welcome screen. See Figure 1

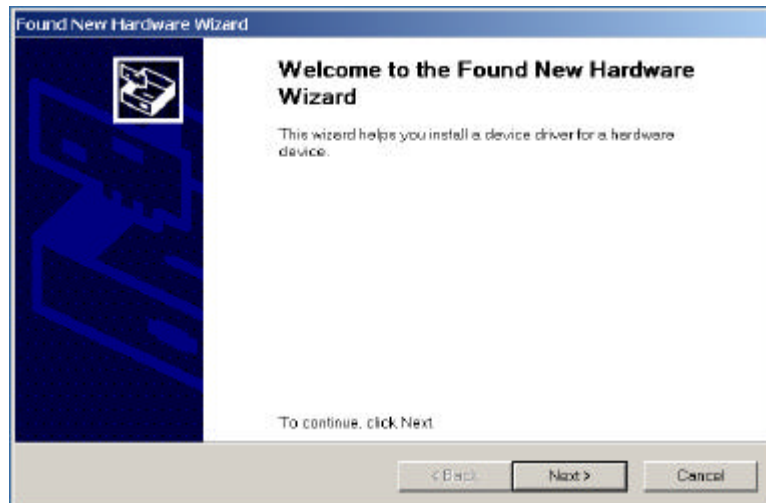


Figure 1

2. The "Found New Hardware Wizard" will install the USB Bridge Cable automatically. Click "next" button to search for a suitable driver (default and recommended). See Figure 2

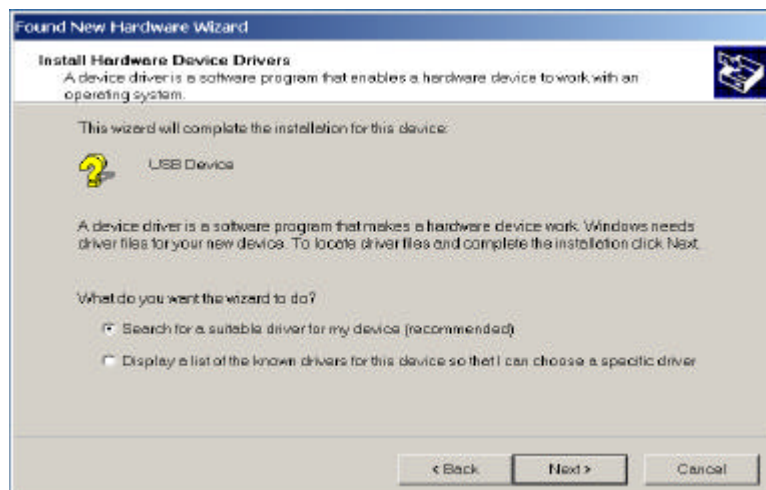


Figure 2

# USER MANUAL for USB Data Link

3. Choose "Specify a location" and click "next". See Figure 3

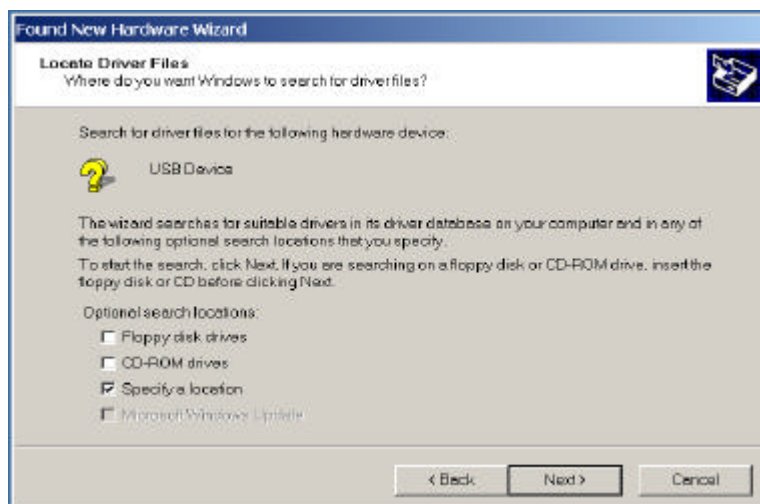


Figure 3

4. Locate the file "USBBC" under 'PC Data Link driver(V1.6)' folder in the CD driver supplied with USB Data Link. See Figure 4

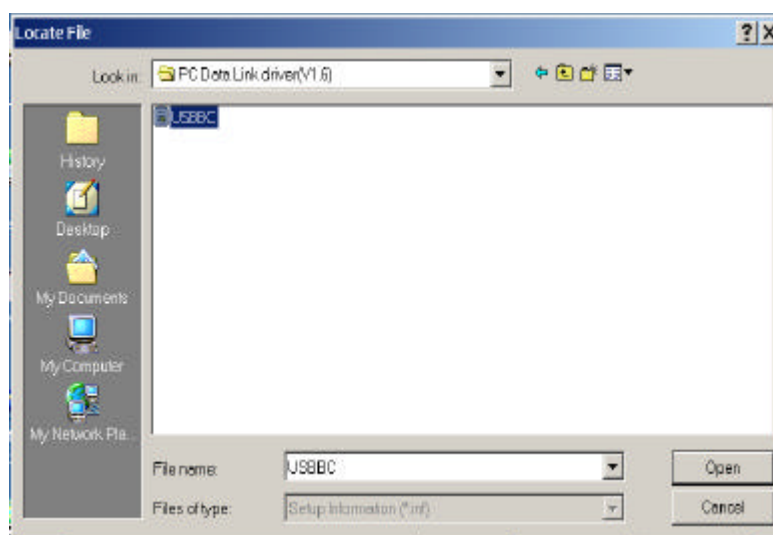


Figure 4

# USER MANUAL for USB Data Link

5. Back to "Found New Hardware Wizard" screen and click "OK". See Figure 5

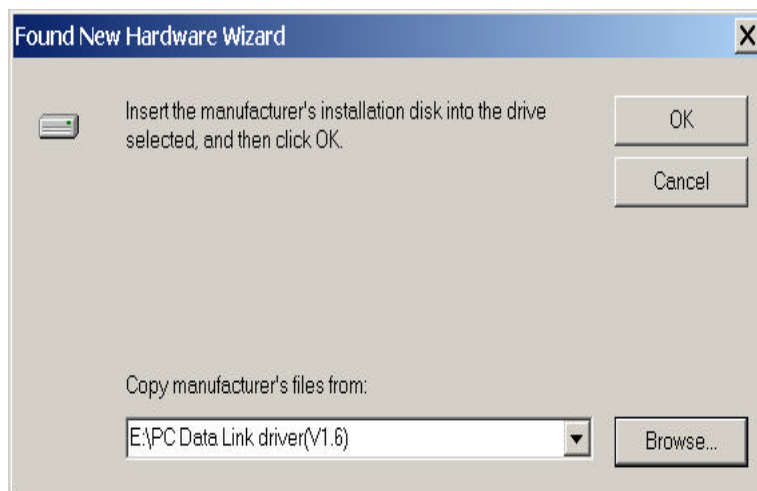


Figure 5

6. The Wizard has successfully located the drive, click "next" to continue. See Figure 6

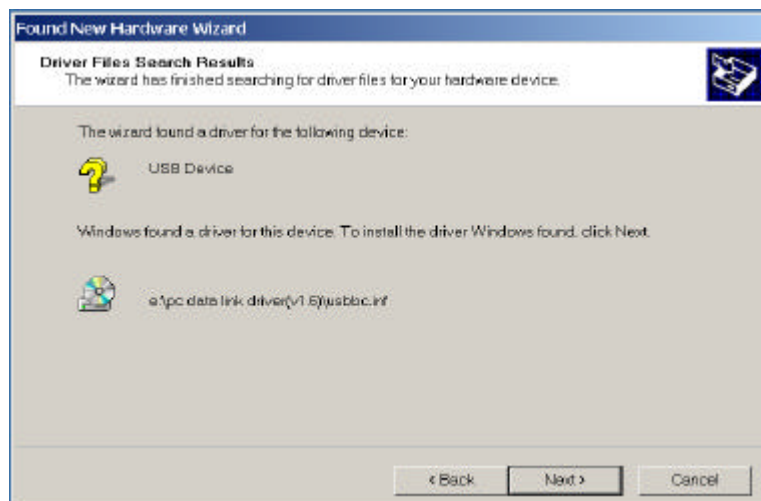


Figure 6

7. Click " Finish " to close the Wizard. See Figure 7

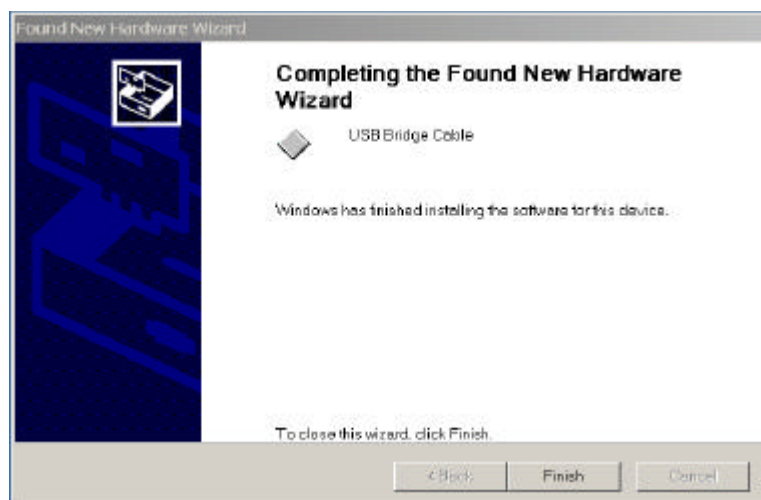


Figure 7

# USER MANUAL for USB Data Link

8. Step1: Place the CD Driver supplied with USB Data Link into the CD ROM.
- Step 2;The [InstallShield@Wizard](#) will install PC-Linq on your computer. Click “ next” to continue. See Figure 8

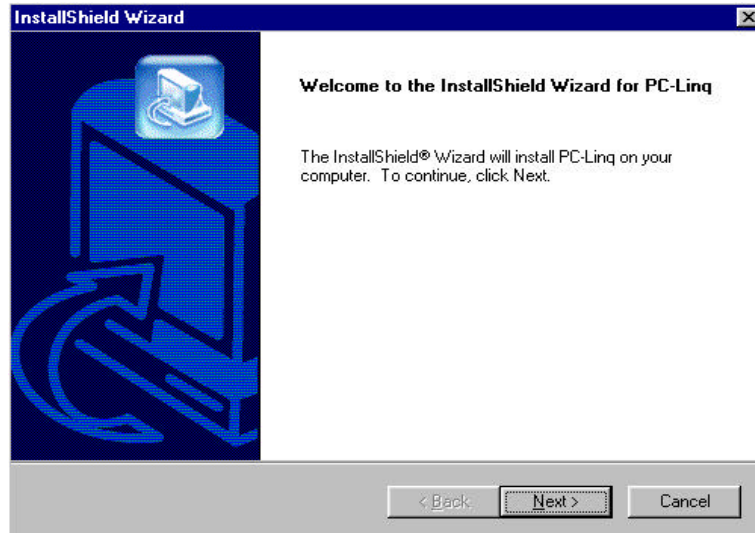


Figure 8

9. Click “next” at the “Choose Destination Location” screen. See Figure 9

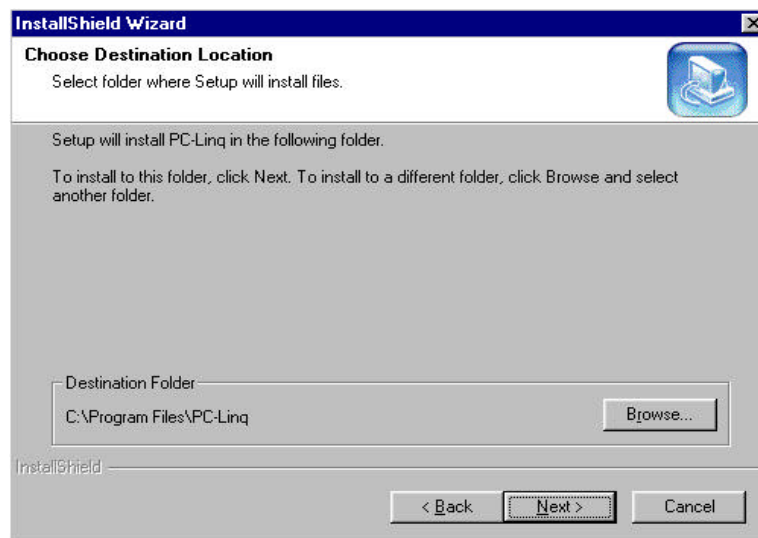


Figure 9

# USER MANUAL for USB Data Link

10. Type a new folder name or select one from the existing folders list. Click “next” to continue.

See Figure 10

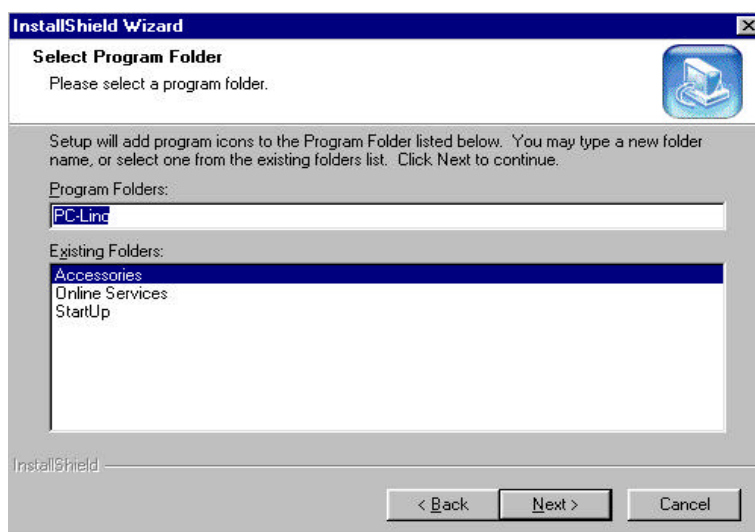


Figure 10

11. PC-Linq icon will be displayed on the desktop. See Figure 11



Figure 11

# USER MANUAL for USB Data Link

12. Return to the “Device Manager” under “System Properties” and check if “USB Bridge Cable” is displayed. Then, click the “OK” and restart your computer to complete your installation. See Figure 12

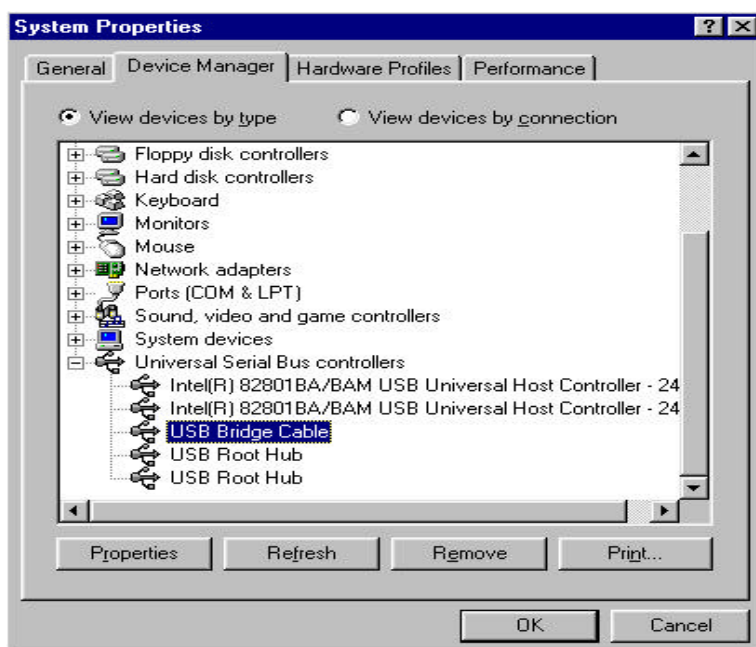


Figure 12

13. Repeat the same procedures (1-12) with the other computer. And, click both computers' PC-Linq icons, then you can see the “Local Machine” & ”Remote Machine” windows to start transferring data between the two connected computers.. See Figure 13.

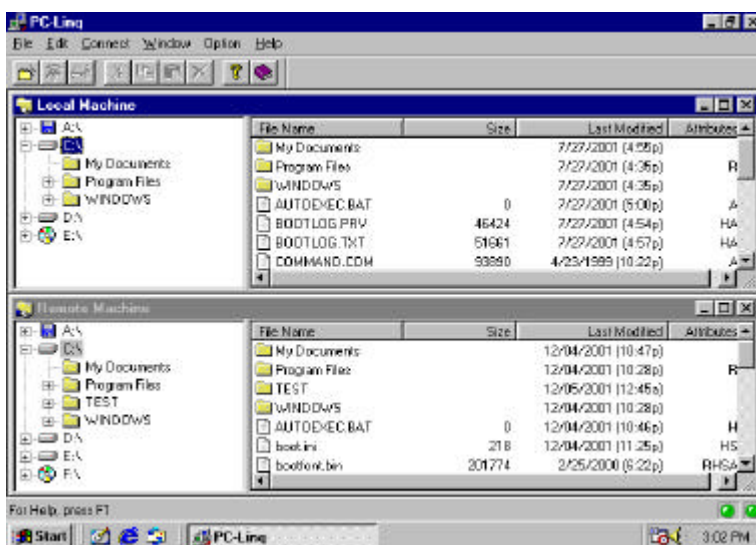


Figure 13



# USER MANUAL for USB Data Link

## Driver Installation Under Win XP

1. Step1: Plug in the Data Link Cable to the USB connector of your computer.

Step 2: Click "next" at the welcome screen. See Figure 1



Figure 1

2. The "Found New Hardware Wizard" will install the USB Bridge Cable automatically. Click "Finish" button to close the wizard. See Figure 2



Figure 2

# USER MANUAL for USB Data Link

3. Step1: Place the CD Driver supplied with USB Data Link into the CD ROM.

Step 2: The InstallShield@Wizard will install PC-Linq on your computer. Click " next " to continue. See Figure 3

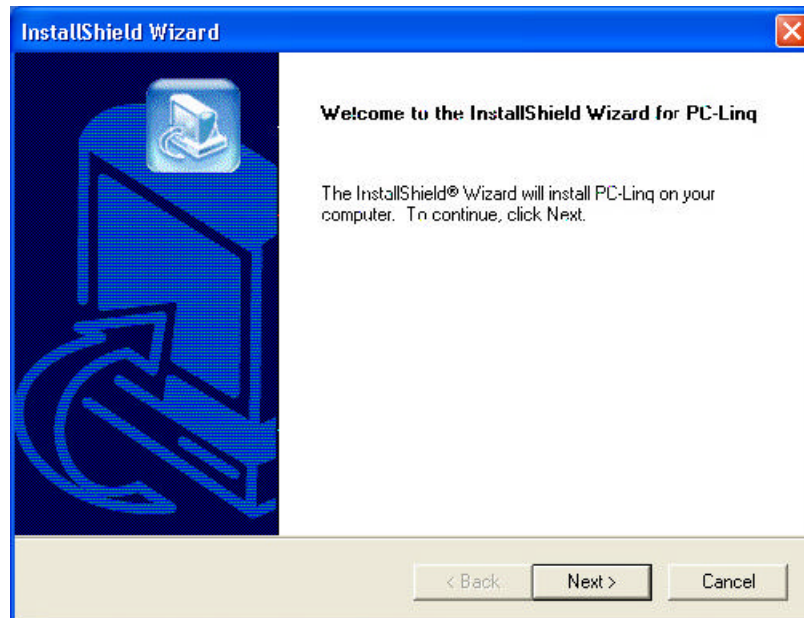


Figure 3

4. Click " next " at the " Choose Destination Location " screen. See Figure 4

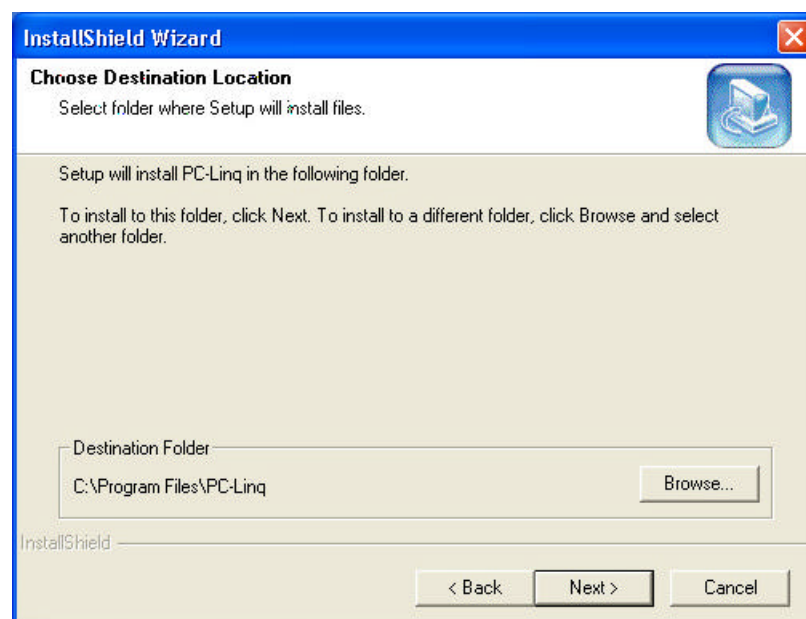


Figure 4

# USER MANUAL for USB Data Link

5. Type a new folder name or select one from the existing folders list. Click " next " to continue. See

Figure 5

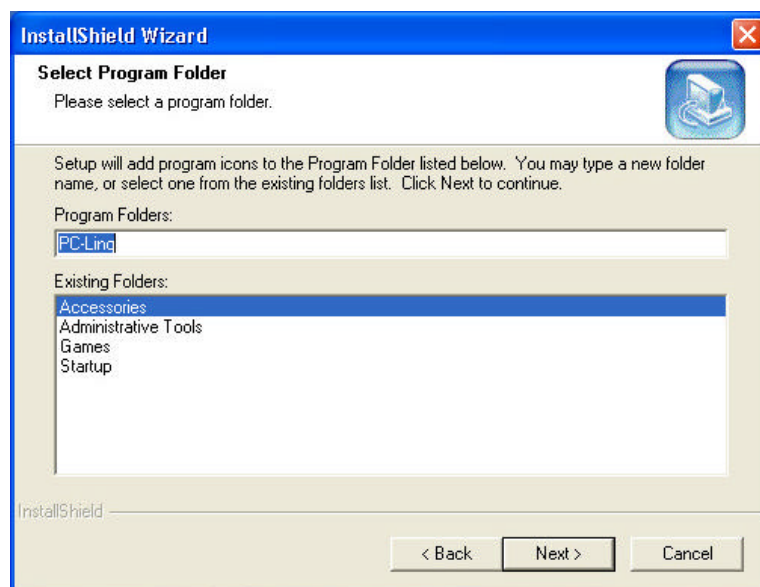


Figure 5

6. PC-Linq icon will be displayed on the desktop. See Figure 6



Figure 6

# USER MANUAL for USB Data Link

- Return to the " Device Manager" under "System Properties" and check if " USB Bridge Cable" is displayed. Then click the "OK" and restart your computer to complete your installation. See Figure 7

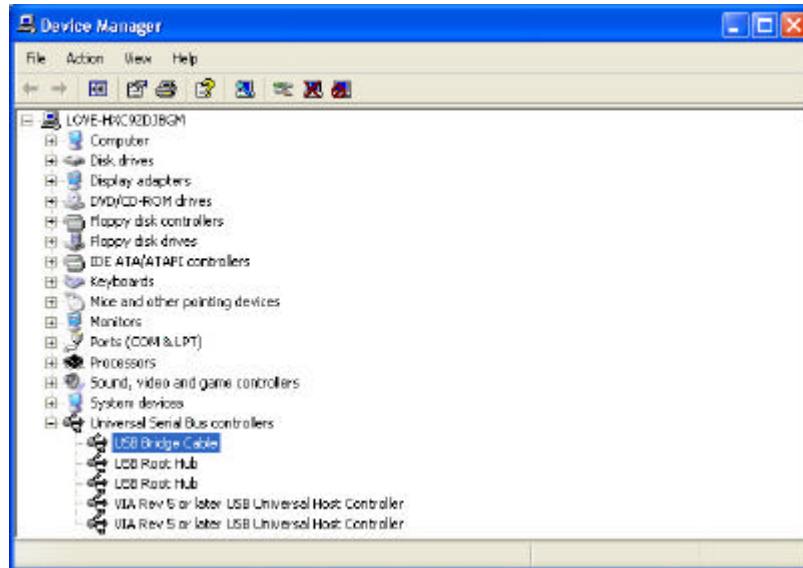


Figure 7

- Repeat the same procedure (1-7) with the other computer. And, click both computers' PC-Linq icons, then you can see the "Local Machine" & "Remote Machine" windows to start transferring data between the two connected computers. See Figure 8

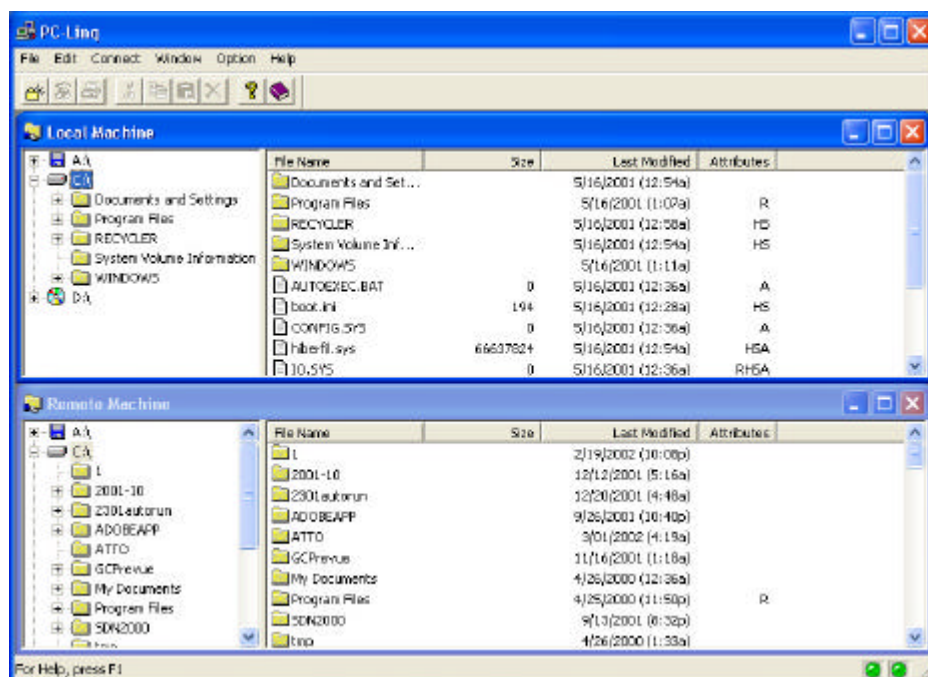


Figure 8

## USER MANUAL for USB Data Link