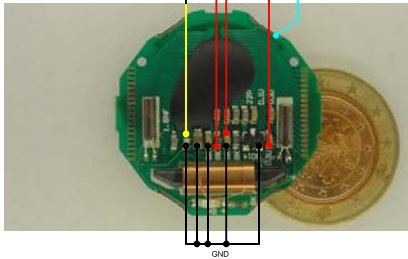
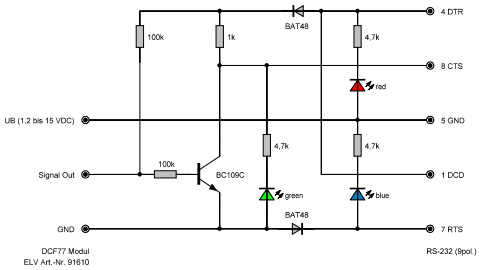


1 2 3 4 5 6 7 8 9 10 11 12 13 14

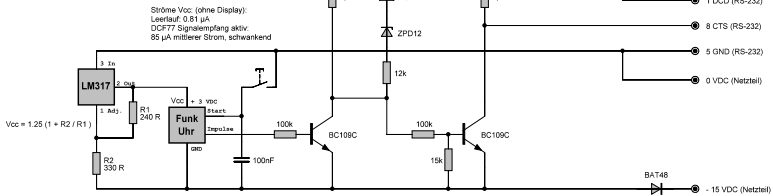
A
B
C
D
E
F
G
H
I
J



Elektronik aus einer Funk-Armbanduhr (€ 19,99)




DCF77 Modul
ELV Art.-Nr. 91610



Ströme Vcc: (ohne Display):
 Leerlauf: 0.81 µA
 DCF77 Signalempfang aktiv:
 85 µA mittlerer Strom, schwankend

$V_{cc} = 1.25 \cdot (1 + R2 / R1)$

Datei: Blatt:  Klaus D.	Kunde: Gegenstand: div. DCF77 Module an RS232	Datum: 21.10.2015
	Maschine: Zeichn.-Nr.:	Blatt: von:

1 2 3 4 5 6 7 8 9 10 11 12 13 14