

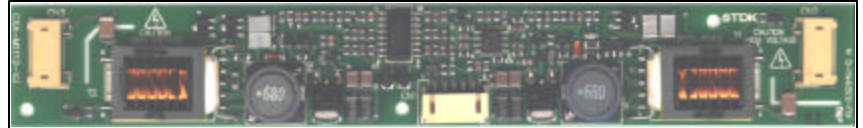
**DESCRIPTION :**

This DC to AC Inverter was developed for large size LCD panel as Multiple Media , Replacement of CRT Monitor and other general Purpose. Applicable LCD ;11 to 14 inches Double lamps type

Lamp Voltage 600V  
Lamp Current 6mA

**FEATURES :**

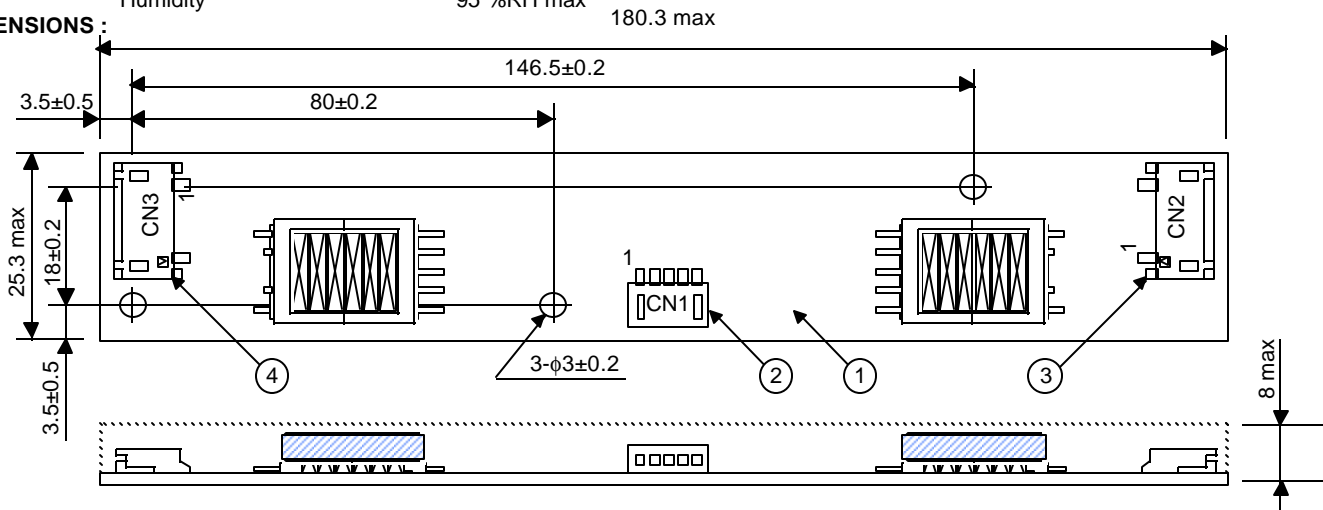
- Current Feedback Circuit
- High Efficiency
- Low noise with voltage resonant circuit
- Regulated output current
- High Reliability Thermal Fuse included
- Alarm signal output function for no ignite
- Output Current Feedback Circuit for each Lamp
- Wide input Voltage type.
- 8mm Low Profile.



**TEMPERATURE & HUMIDITY :**

Operating Temperature Range 0 °C ~ +50°C  
Storage Temperature Range -30 °C ~ +85°C  
Humidity 95 %RH max

**DIMENSIONS :**



Unit : mm  
Weight : 21 (g) typ.

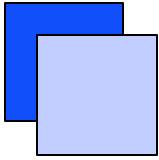
No.	Part Description	Qty.		Note
1	PWB	1	UL94V-0	t=1mm
2	Connector CN1	1	S5B-PH SM	(JST) Input Connector
3	Connector CN2	1	SM02(8.0)B-BHS	(JST) Output Connector
4	Connector CN3	1	SM02(8.0)B-BHS	(JST) Output Connector

Pin	Symbol	Note
CN1-1	Vin	8 ~ 20 Vdc
CN1-2	GND	0 Vdc
CN1-3	Vbr	0 ~5 Vdc
CN1-4	Vst	0 / 5 Vdc out
CN1-5	Vrmt	0 / 5 Vdc (H active)

Pin	Symbol	Note
CN2-1	lout1	2 ~ 5.5 mArms
CN2-2	N.C.	
CN2-3	lout-ret	(2V)
Pin	Symbol	Note
CN3-1	lout2	2 ~ 5.5 mArms
CN3-2	N.C.	
CN3-3	lout-ret	(2V)

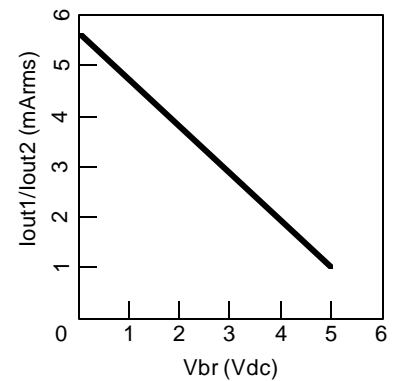
General Information Tel : (03) 5201-7229 (Japan)  
Tel : (708) 390-4454 (USA)  
Technical Information Tel : (473) 78-9664 (Japan)  
Tel : (310) 530-9397 (USA)

All specification are subject to change without notice.



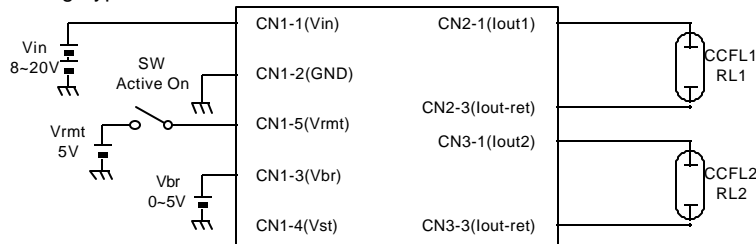
**ELECTRICAL CHARACTERISTICS :**

Parameter	Symbol	Conditions				Specifications			Unit	Note	
		V <sub>in</sub> (V)	V <sub>br</sub> (V)	T <sub>a</sub> (°C)	RL1.2 (kΩ)	min.	typ.	max.			
Output Current	lout1	8 ~ 20	0	0 ~ 50	100 ~ 130	4.5	5.5	6.5	mA <sub>rms</sub>	Max. Brightness	
	lout2					5.0	5.5	6.0			
	lout1	12	3	23±5	110	-	-	2.5			Min. Brightness
	lout2					-	-	-			
	lout1					-	-	-			
	lout2					-	-	-			
Input Current	I <sub>in</sub>	8 ~ 20	0 ~ 3	0 ~ 50	100 ~ 130	-	-	1.5	Adc		
Frequency	FL	8 ~ 20	0 ~ 3	0 ~ 50	100 ~ 130	25	35	45	kHz		
Open Voltage	V <sub>open</sub>				∞	1300	-	-	V <sub>rms</sub>		

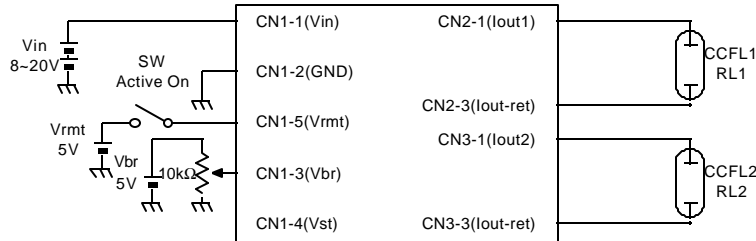


**APPLICATION (for example)**

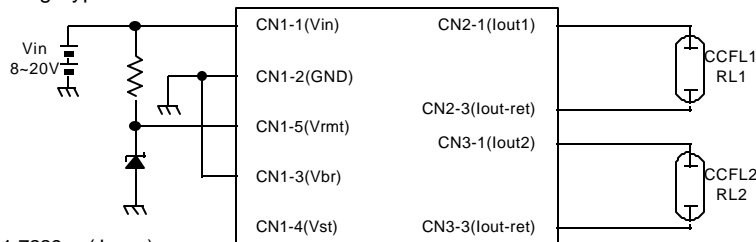
**Voltage Dimming Type**



**Resistor Dimming Type**



**None Dimming Type**



General Information Tel : (03) 5201-7229 (Japan)  
 Tel : (708) 390-4454 (USA)  
 Technical Information Tel : (473) 78-9664 (Japan)  
 Tel : (310) 530-9397 (USA)

All specification are subject to change without notice.