

# PM55L-048

## APPLICATIONS

Printers / Photocopiers / Laser printers

## SPECIFICATIONS

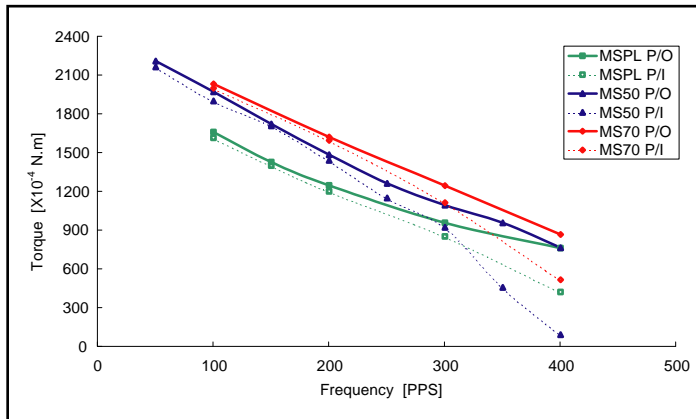
### Reference characteristics

Motor Size	PM55L-048	
Number of Steps per Rotation	48(7.5° / Step)	
Drive Method	2-2 Phase	
Drive Circuit	UNIPOLAR CONST. VOLT.	BIPOLAR CHOPPER
Drive Voltage	24[V]	24[V]
Current / Phase	600[mA]	
Coil Resistance / Phase	30[Ω]	6[Ω]
Drive I C	SMDT-002	UDN2916B-V
Magnet Material	Ferrite plastic magnet Polar anisotropy ferrite sintered magnet Nd-Fe-B bonded magnet	
Insulation Resistance	100M[Ω] MIN	
Dielectric Strength	AC 500[V] 1[min]	
Class of Insulation	CLASS E	
Operating Temp.	-10[°C] ~ 50[°C]	
Storage Temp.	-30[°C] ~ 80[°C]	
Operating Hum.	20[%] RH ~ 90[%] RH	

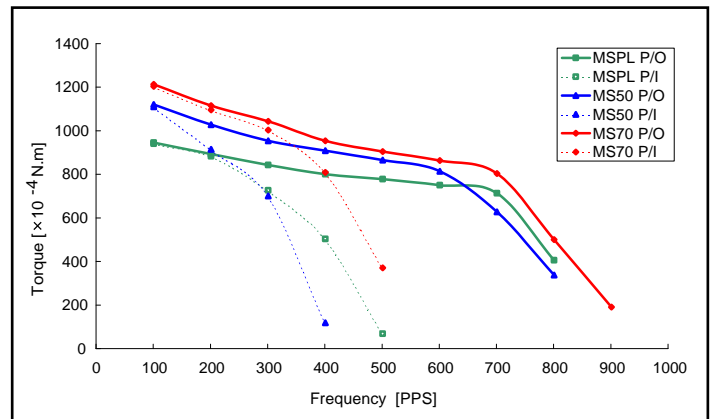


### Torque characteristics

PM55L-048 UNI-CONST V(at 24[V],30[Ω])

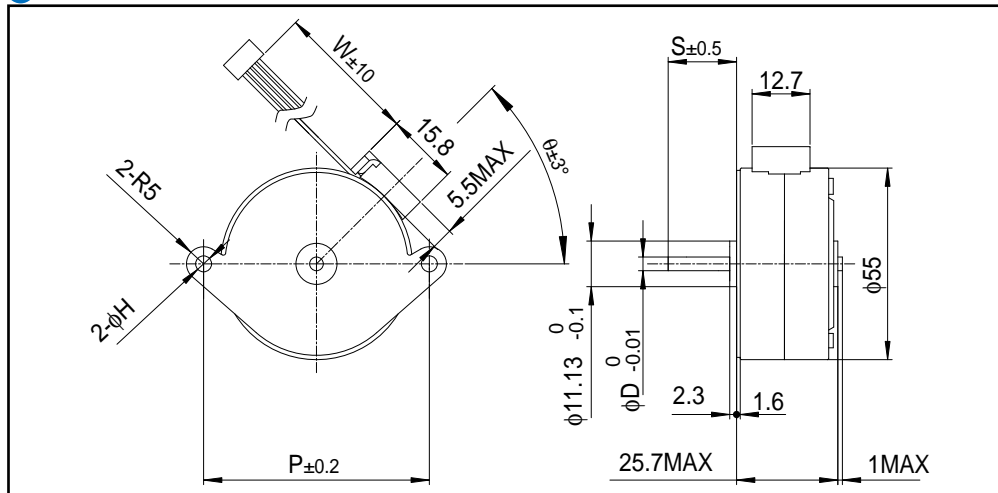


PM55L-048 BI-CHOPPER(at 24[V],6[Ω],600[mA])



These torque values are general reference values. When using motors, factors such as heat radiation conditions and duty effect heat rise, therefore please select motors after considering the heat conditions in the actual equipment.

### Dimensions



If you would like to know this Dimensions(D,S,W,H,P,θ),Please see Standard Dimensions in our Home Page.