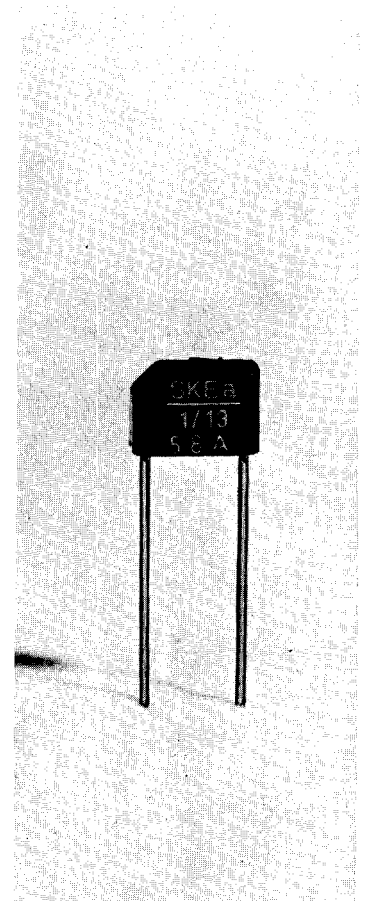


	SKEa 1/13	SKEa 1/17
V _(BR)	≥ 1300 V	≥ 1700 V
I _{FAV}	(T _{amb} = 45 °C, sin. 180 °el)	1,2 A
I _{FRMS}		7 A
I _{FCL}	(T _{amb} = 45 °C)	1,0 A
I _{FSM}	(T _{vi} = 25 °C) (T _{vi} = 150 °C)	60 A 50 A
i ² t	(T _{vi} = 150 °C, ≥ 10 ms) (T _{vi} = 150 °C, 5 ms)	12,5 A ² s 9 A ² s
P _{RSM}	(T _{vi} = 150 °C, t = 10 μs)	1000 W
I _R	(T _{vi} = 25 °C, 70 % V _(BR))	typ. 10 μA
V _F	(I _F = 10 A)	max. 1,55 V
V _(TO)	(T _{vi} = 25 °C)	0,85 V
r _f	(T _{vi} = 25 °C)	90 mΩ
t _{rr}	(T _{vi} = 25 °C)	typ. 10 μs
R _{thja}		typ. 80 °C/W
T _{vi}		- 40 ... + 150 °C
T _{stg}		- 55 ... + 150 °C
a		5 · 9,81 m/s ²
w		ca. 1 g
RC		0,01 μF + 500 Ω (1 W)
R _P		270 kΩ (2 W)
Ex		SKEa 1/13



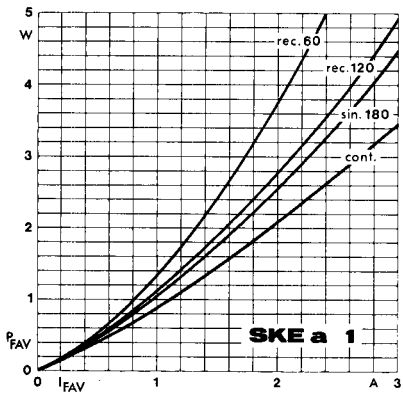


Fig. 5

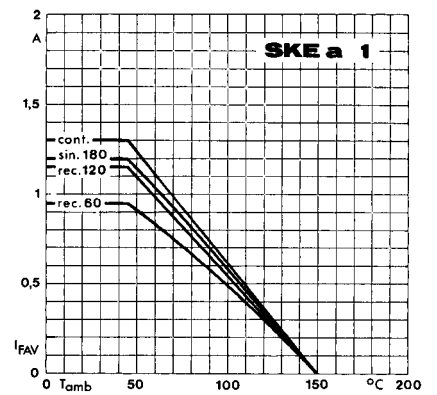


Fig. 6

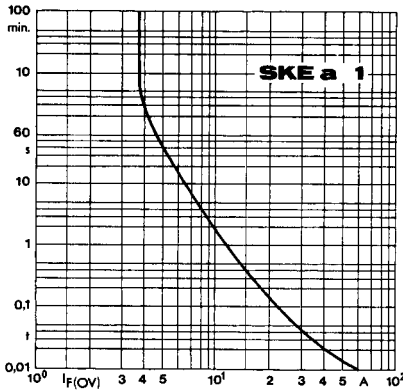


Fig. 7

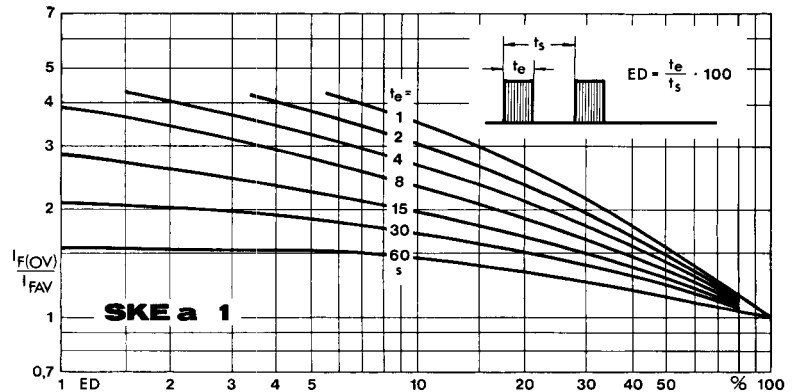


Fig. 8

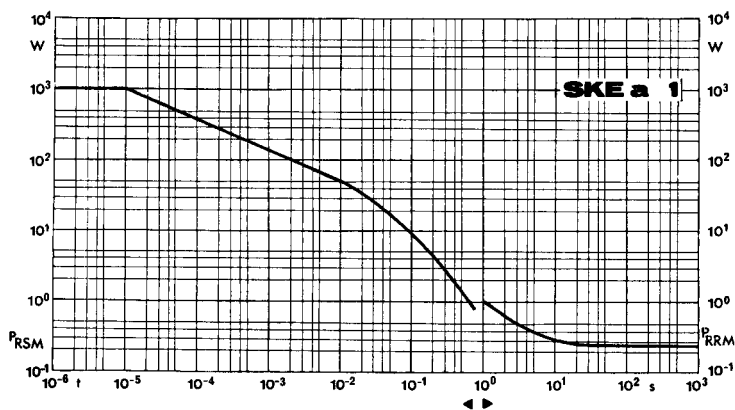


Fig. 9

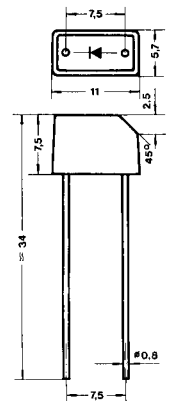


Fig. 11