

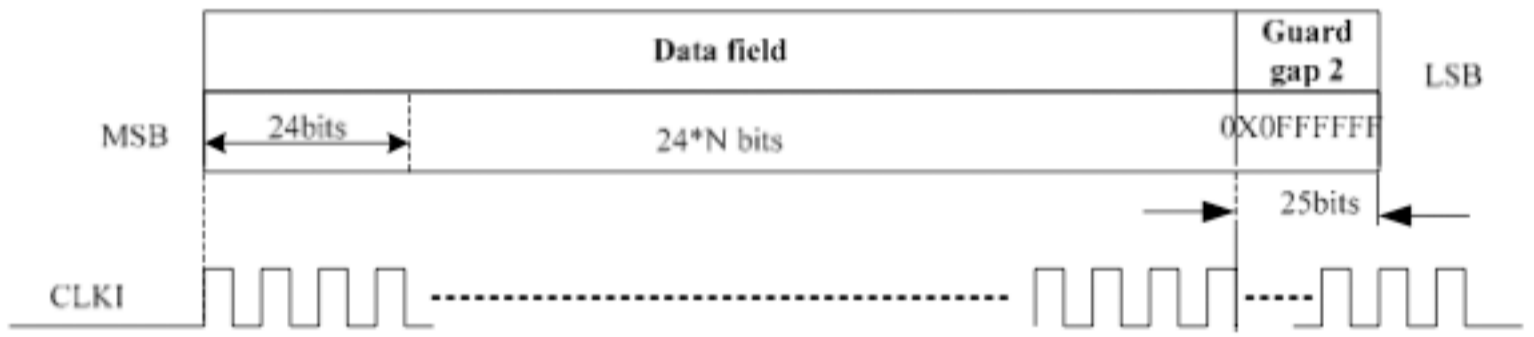
FEATURES:

- 2-wire Control Mode, No address needed.
- RGB 3 Channel 8 bit PWM Dimming.
- Few external components.
- 2048 chips cascade capability.
- 768Kbps~4Mbps transmission speed.

LED value 8 bits	Description		
	Number of '1'	Number of '0'	Duty cycle
0	0	255	0
1	1	254	1/255
254	254	1	254/1

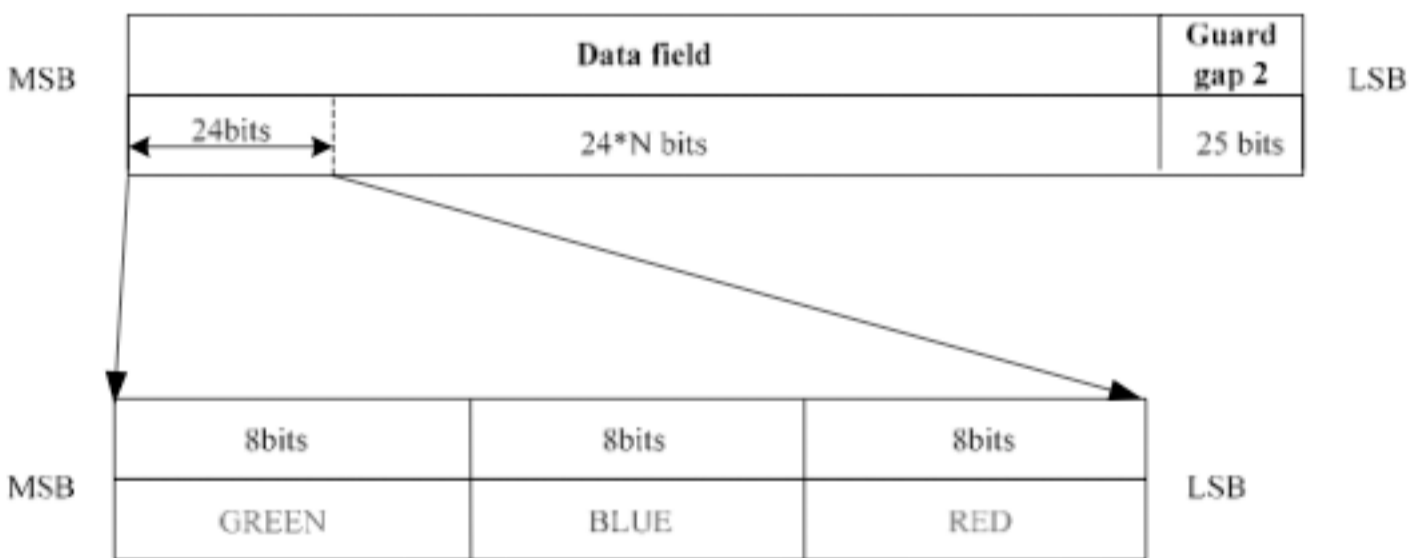
1. Data frame structure

Frame structure:



*Note: N is number of pixel

If CLKI=4.096MHZ, a SD600 cascade chain can control $(4096000-25)/24= 170665$ pixels according to the frame structure in one second. Or drive 512 pixels $4096000/ (25+24*512) =332$ times/s.



*Note: N is number of pixel

Input signals relationship:

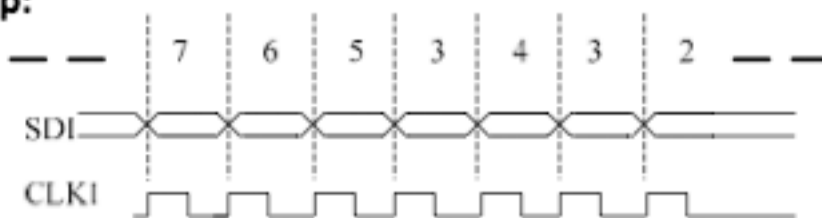
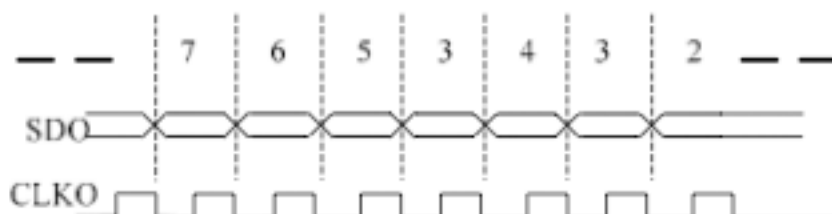


Figure 2: Timing of input signals

*Note: the CLKI signal should always keep oscillating.



There are there 8-bit registers control the LED flash duty cycle. The relationship between LED light and LED control register value see below: