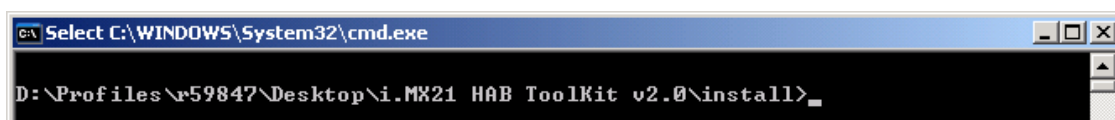


i.MX21 HAB ToolKits for T02 Installation Guide (Win XP/ 2000)

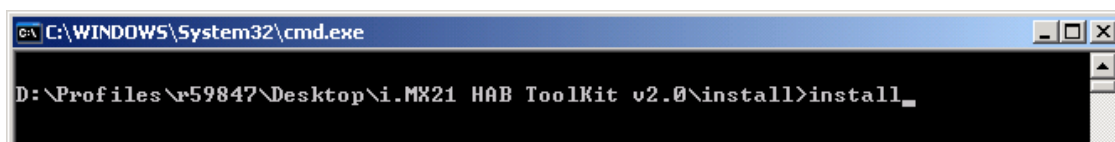
If this is the FIRST first time that you use the i.MX21 HAB ToolKits v2.0 for T02.1 silicon, users are required to perform the following installation

Please follow the following procedure for the installation:

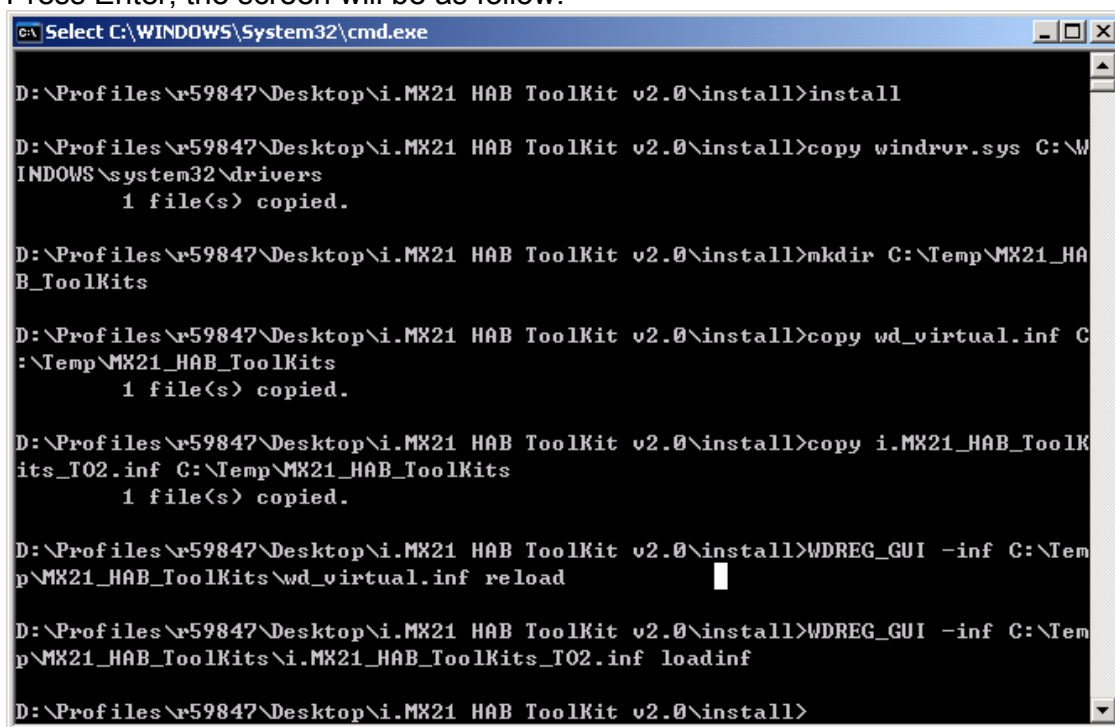
1. Please do NOT connect the USB to PC until Procedure 7.
2. copy the “i.MX21 HAB ToolKits v2.0.zip” to your local disk.
3. Unzipped “i.MX21 HAB ToolKits v2.0” to your local disk.
4. Using the Command Prompt, and go to the location whether the “i.MX21 HAB ToolKits 2.0\install” locate as follow:



5. Type “install” in the DOS command window as follow:



6. Press Enter, the screen will be as follow:



```
C:\ Select C:\WINDOWS\System32\cmd.exe

D:\Profiles\r59847\Desktop\i.MX21 HAB ToolKit v2.0\install>install

D:\Profiles\r59847\Desktop\i.MX21 HAB ToolKit v2.0\install>copy windrvr.sys C:\W
INDOWS\system32\drivers
        1 file(s) copied.

D:\Profiles\r59847\Desktop\i.MX21 HAB ToolKit v2.0\install>mkdir C:\Temp\MX21_HA
B_ToolKits

D:\Profiles\r59847\Desktop\i.MX21 HAB ToolKit v2.0\install>copy wd_virtual.inf C
:\Temp\MX21_HAB_ToolKits
        1 file(s) copied.

D:\Profiles\r59847\Desktop\i.MX21 HAB ToolKit v2.0\install>copy i.MX21_HAB_ToolK
its_T02.inf C:\Temp\MX21_HAB_ToolKits
        1 file(s) copied.

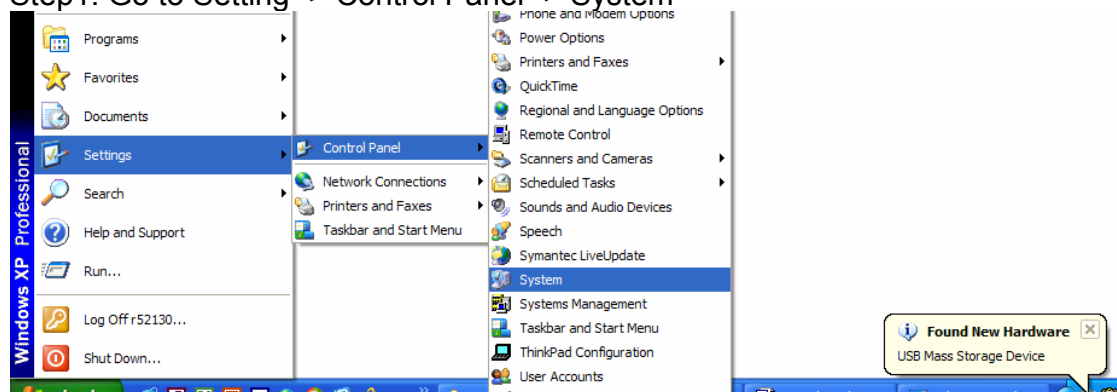
D:\Profiles\r59847\Desktop\i.MX21 HAB ToolKit v2.0\install>WDREG_GUI -inf C:\Tem
p\MX21_HAB_ToolKits\wd_virtual.inf reload

D:\Profiles\r59847\Desktop\i.MX21 HAB ToolKit v2.0\install>WDREG_GUI -inf C:\Tem
p\MX21_HAB_ToolKits\i.MX21_HAB_ToolKits_T02.inf loadinf

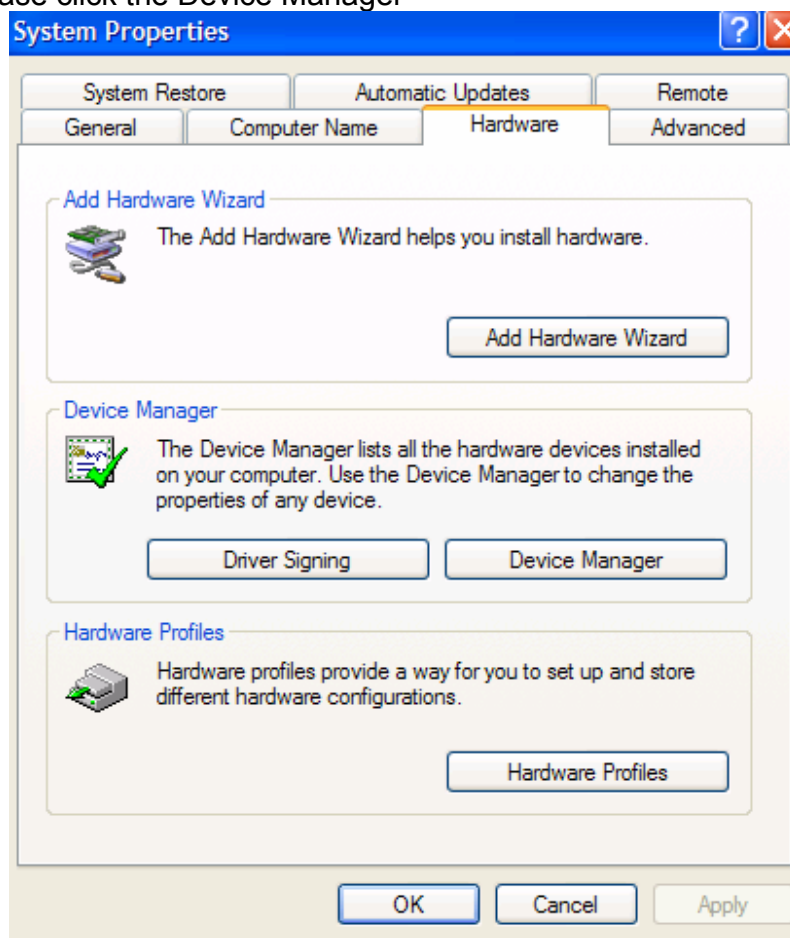
D:\Profiles\r59847\Desktop\i.MX21 HAB ToolKit v2.0\install>
```

7. Plug in the USB Cable to ADS, make sure the Boot Mode is in Bootstrap (S2 Boot0 – Boot1- Boot2- Boot3 are ON-ON-ON-ON) and Power up the ADS board, at first, it will recognize as a Mass Storage Device. You will need to update the driver. Please go to Settings -> Control Panel -> System -> Hardware -> Device Manager as follow:

Step1: Go to Setting -> Control Panel -> System

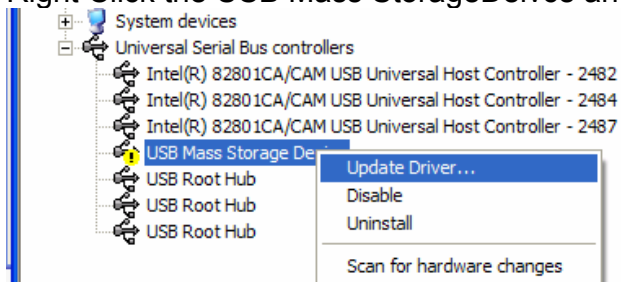


Step 2: Please click the Device Manager

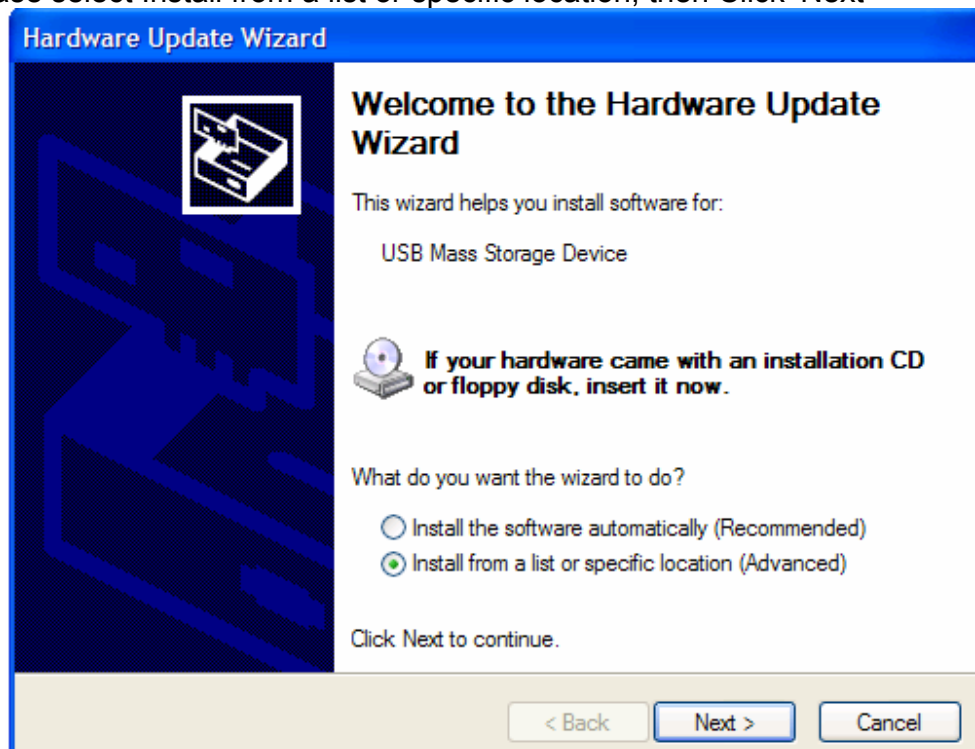


Step 3 (For WinXP):

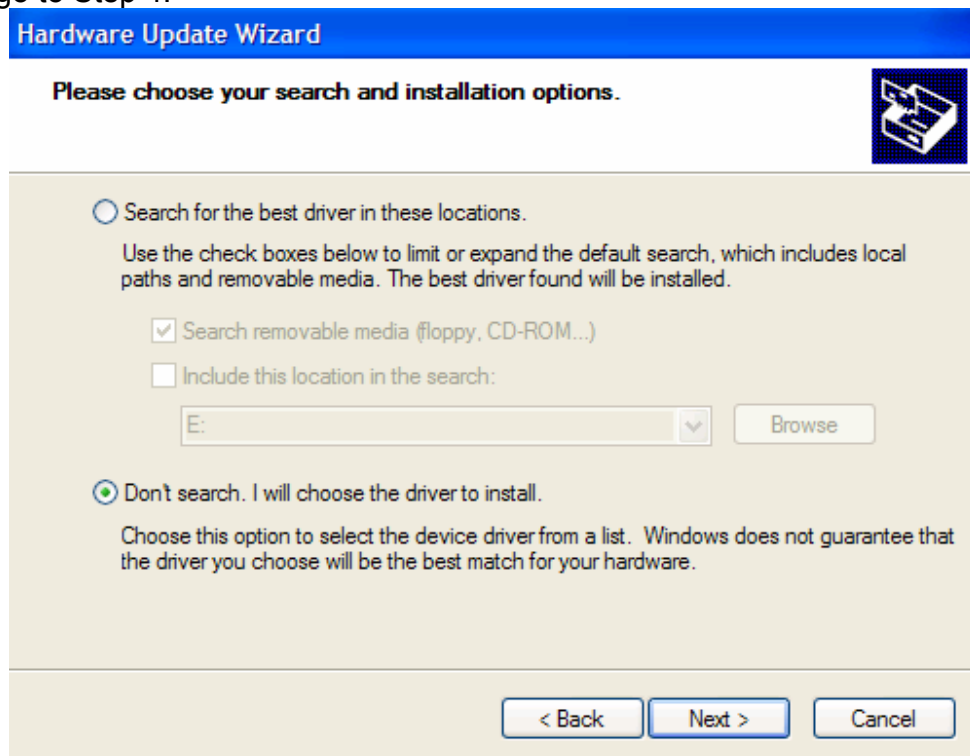
Right Click the USB Mass Storage Device and select "Update Driver" for the ADS



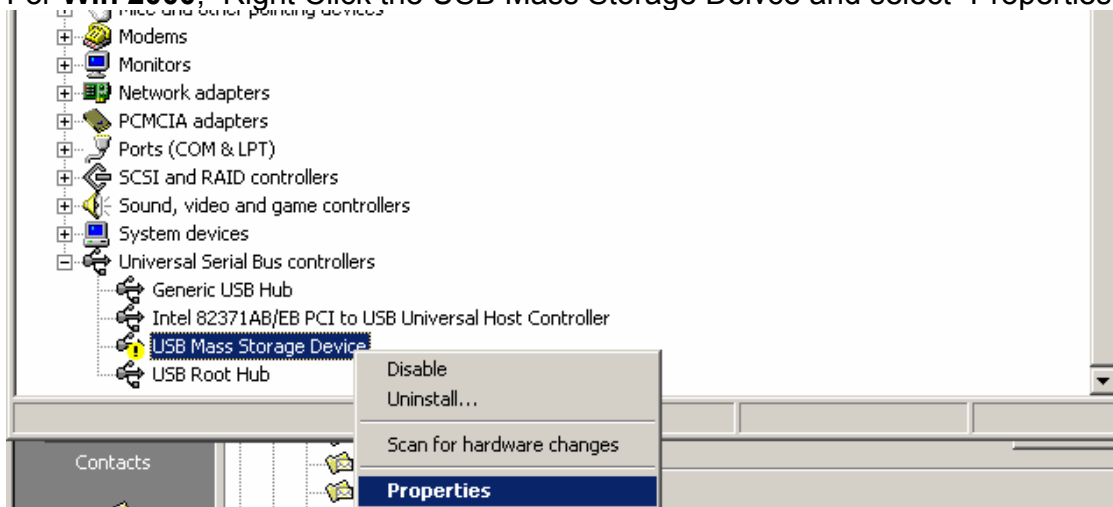
Please select Install from a list or specific location, then Click 'Next'



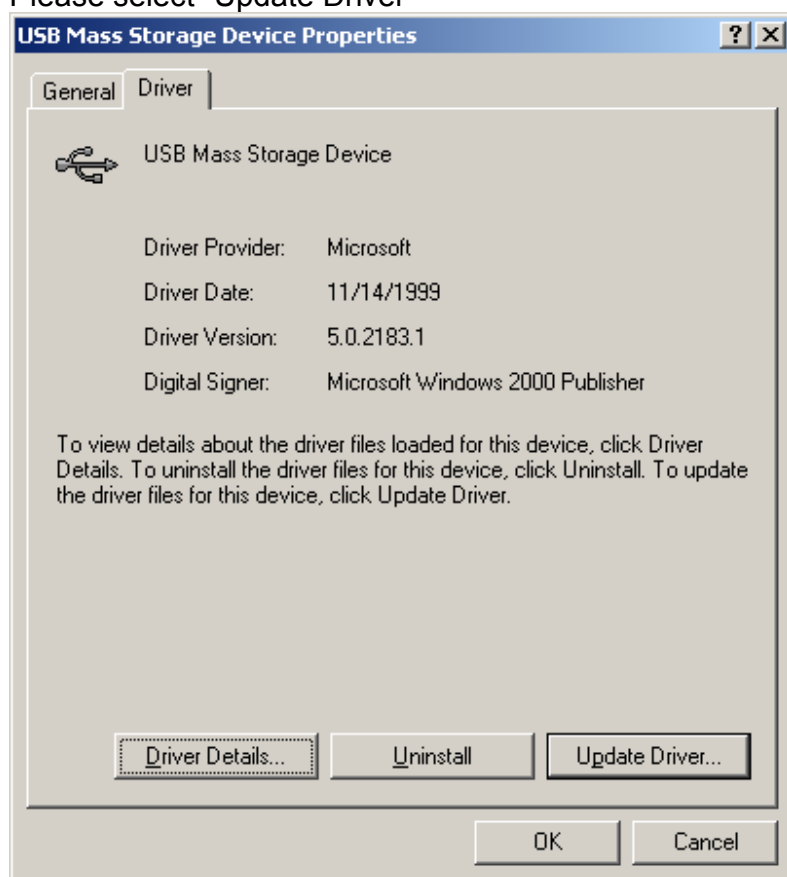
Please select “Don’t search. I will choose the driver to install”, then Click ‘Next’ and go to Step 4.



For **Win 2000**, Right Click the USB Mass Storage Device and select “Properties”



Please select “Update Driver”



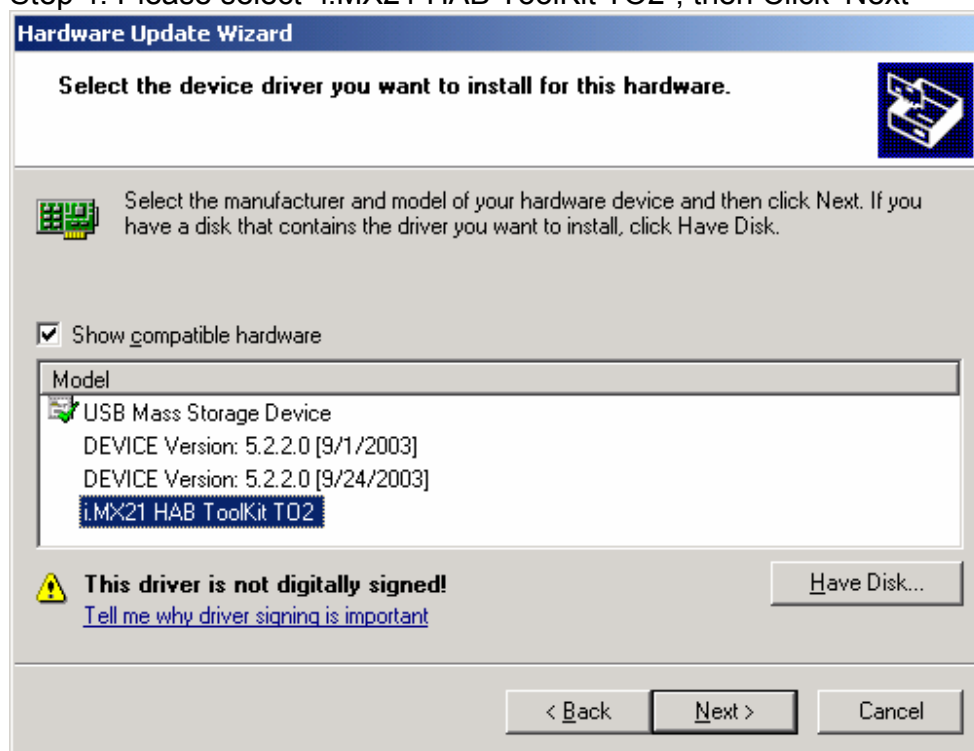
Please Click "Next"



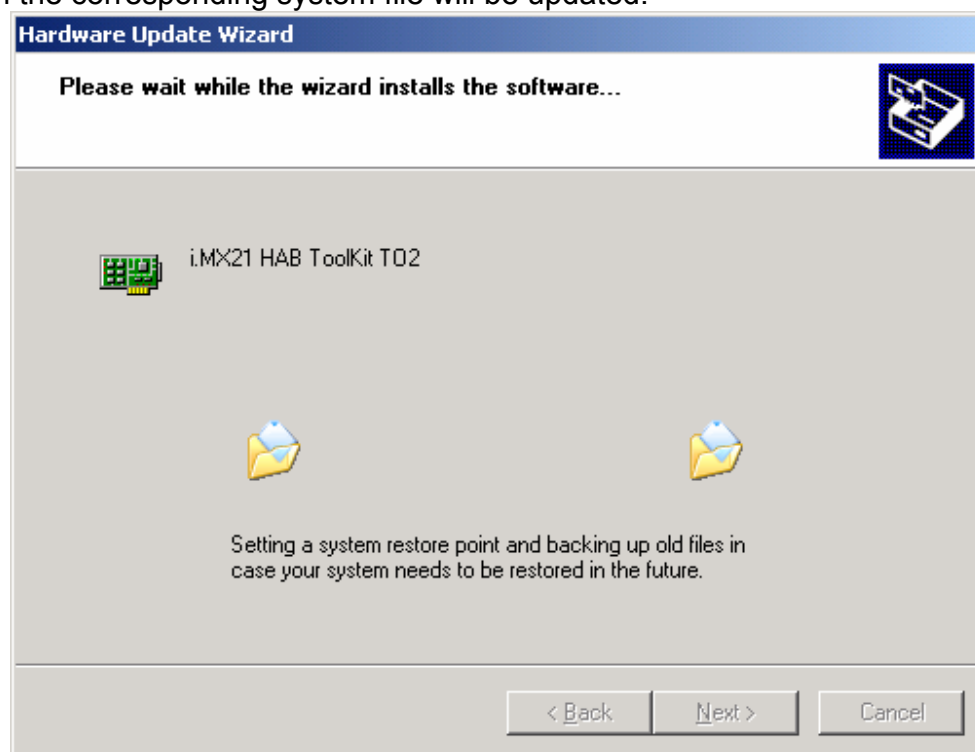
Please Select "Display a list of known drivers for this device so that I can choose a specific driver" and Click Next and go to Step 4.



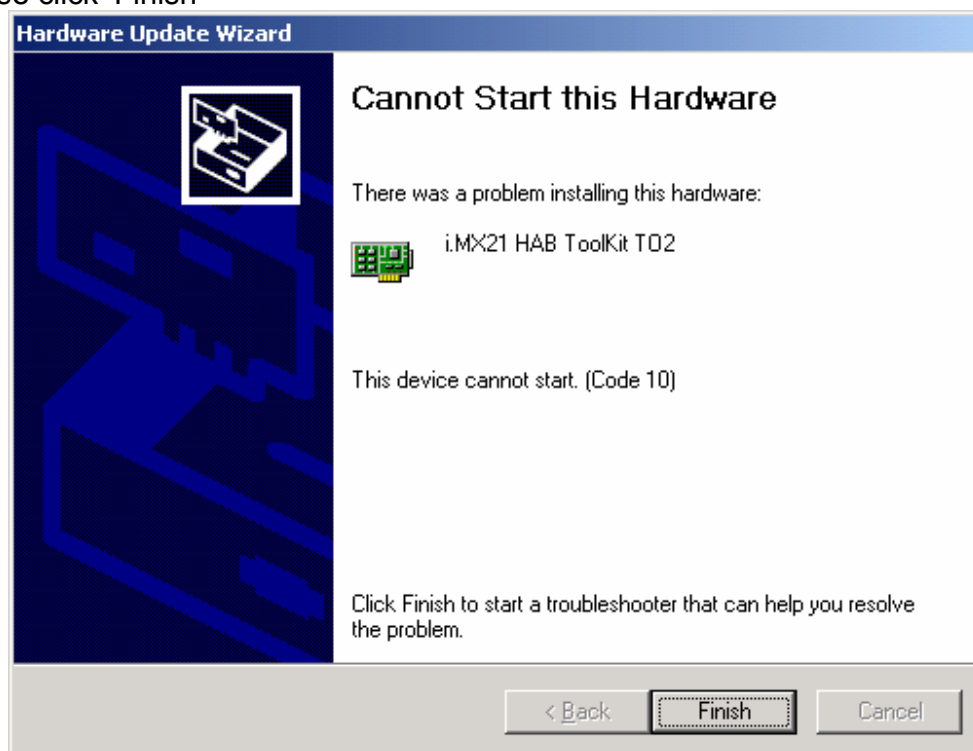
Step 4: Please select “i.MX21 HAB ToolKit TO2”, then Click ‘Next’



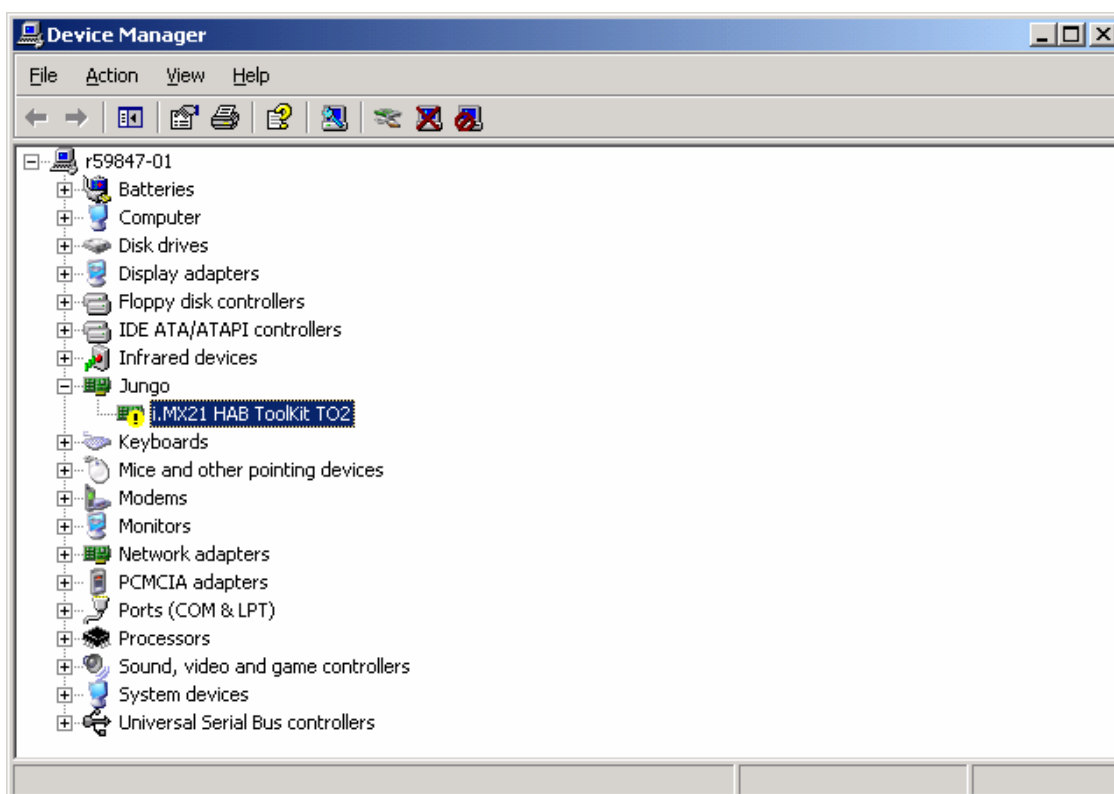
Then the corresponding system file will be updated.



After the update, For **Win XP**, it will show “Cannot Start this Hardware” and please click ‘Finish’



Exclamation Mark will be shown in front of the i.MX21 HAB ToolKits. For **Win XP**, please go to Step 5. For **Win2000**, you will be required to restart the computer to start to use the updated driver.



Step 5: For **Win XP**, it is not required to restart the computer. Please POWER – OFF the ADS and POWER –ON in Bootstrap mode again, in Device Manager, the exclamation mark will disappear, and the USB for ADS is ready to use.

