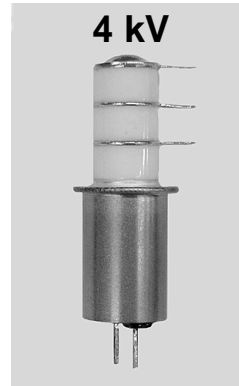


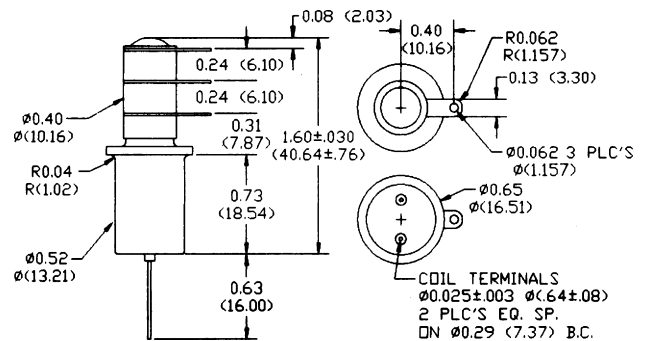


SPECIFICATIONS

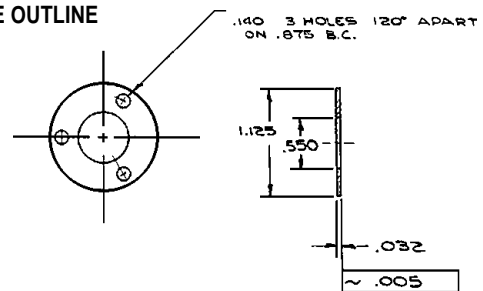
Model Number	RF1E RF1D RF1G
Test Voltage (kV Peak) 60 Hz	4
Rated Operating Voltage (kV Peak) DC or 60 Hz	2
2.5 MHz	2
16 MHz	2
32 MHz	2
Continuous Current, Carry (Amps, RMS) DC or 60 Hz	8
2.5 MHz	6
16 MHz	4
32 MHz	2
Contact Capacitance (pF) Between Open Contacts	1.6
Open Contacts to Ground	2.0
Contact Resistance (mΩ)	50
Operate Time (ms. Max.)	10
Release Time (ms. Max.)	10
Pull-in Voltage @ 25° C	
26.5 VDC Coil	16
12 VDC Coil	8
Dropout Voltage @ -55 to 125° C	
26.5 VDC Coil	1-10
12 VDC Coil	1-5
Coil Resistance (Ohms ± 10%)	
26.5 VDC Coil	920
12 VDC Coil	205
Shock, 1/2 Sine 11 ms. (Peak g's)	30
Vibration, Peak g's 55-2000 Hz	10
Expected Mechanical Life Cycles (X10 ⁶)	2
Weight, Ounces (Grams) Max.	1 (28)



- **RF1E-26S**
N/C, Ground isolated.
Clamp mount.
- **RF1D-26S**
Flange mount version of RF1E.
- **RF1G-12S**
12 VDC version of RF1E.
- **RF1GD-12S**
Flange mount version of RF1G.



FLANGE OUTLINE



MILITARY CROSS REFERENCE		
Model Number	Military Specification	Military Drawing
RF1D-26S	MIL-R-83725	M83725/3-001
RF1E-26S	MIL-R-83725	M83725/3-002

FLANGE CROSS REFERENCE	
Model Number	Flange Version
RF1E-26S	RF1D-26S
RF1G-12S	RF1GD-12S