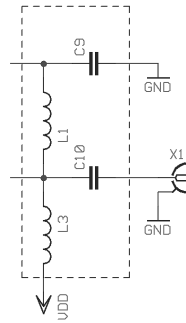


**Matching Circuit**

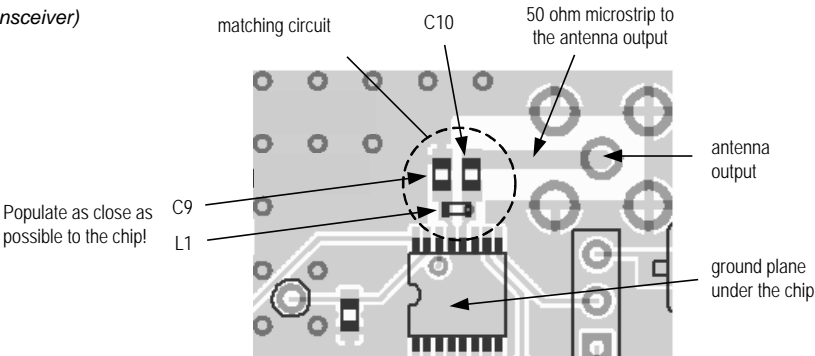
The actual values for each chips can be found in the appropriate datasheets!



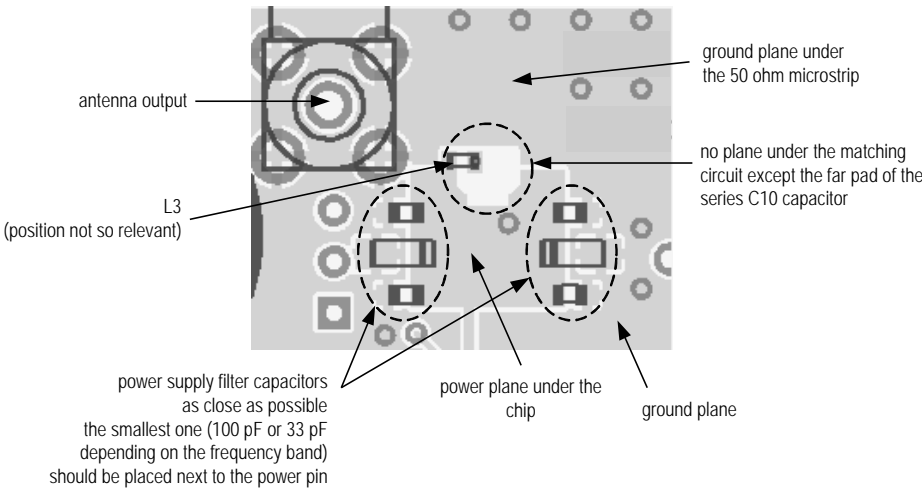
| IA4420         |                 |            |            |
|----------------|-----------------|------------|------------|
| Freq.<br>[MHz] | C9, C10<br>[pF] | L1<br>[nH] | L3<br>[nH] |
| 315            | 6.8             | 43         | 390        |
| 434            | 4.7             | 27         | 390        |
| 868/915        | 3               | 6.8        | 100        |

| IA4421         |                 |            |            |
|----------------|-----------------|------------|------------|
| Freq.<br>[MHz] | C9, C10<br>[pF] | L1<br>[nH] | L3<br>[nH] |
| -              | -               | -          | -          |
| 434            | 4.7             | 27         | 390        |
| 868/915        | 3               | 6.8        | 100        |

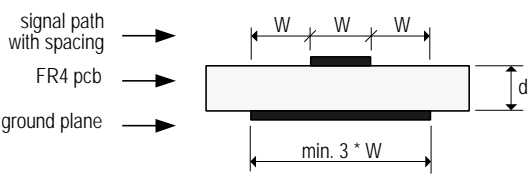
**Top Side**  
(IA4421 transceiver)



**Bottom Side**  
(IA4421 transceiver)

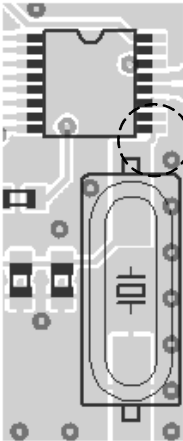


50 ohm Microstrip



|                        |      |      |      |
|------------------------|------|------|------|
| pcb thickness (d) [mm] | 0.8  | 1    | 1.6  |
| wire width (W) [mm]    | 1.47 | 1.84 | 2.97 |

Crystal Arrangement  
(IA4321 receiver)



Keep parasitic capacitance as low as possible (use short wire)!

In case of using separate RX-TX chips, use the same layout for the crystals on both panels in order to have the same reference frequency!