

CIM01

0502

J1

1

K1

G6S-2

1N4448 D1  
1N4448 D2  
1N4448 D3  
1N4448 D4

1N4148 D5

C5  
Cref

Q3

R10  
4k7

Rx  
R33  
R5  
RFB

AD5934  
U1

R8  
100k

R9  
4k7

R1  
100

100N

3, 3/20

R4  
Ropt

R6  
22

R7  
15k

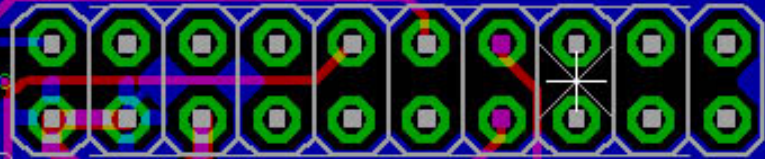
Qopt  
Q1

BSS123  
Q2

C2  
100N

100N

+



J4

3, 3/20

3, 3/20

