



STS7C4F30L

N-CHANNEL 30V - 0.018 Ω - 7A SO-8

P-CHANNEL 30V - 0.070 Ω - 4A SO-8

STripFET™ POWER MOSFET

TYPE	V _{DSS}	R _{DS(on)}	I _D
STS7C4F30L(N-Channel)	30 V	<0.022 Ω	7 A
STS7C4F30L(P-Channel)	30 V	<0.080 Ω	4 A

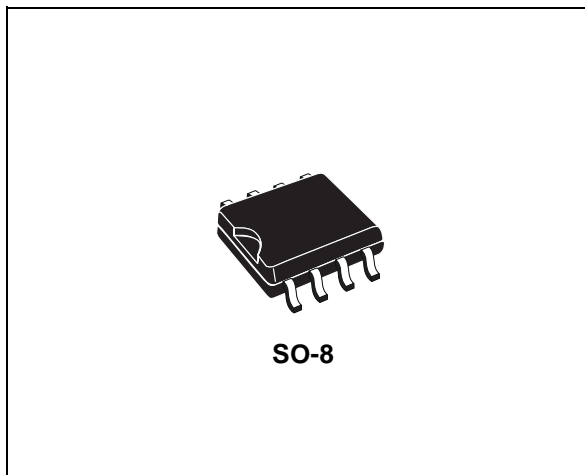
- TYPICAL R_{DS(on)} (N-Channel) = 0.018 Ω
- TYPICAL R_{DS(on)} (P-Channel) = 0.070 Ω
- STANDARD OUTLINE FOR EASY AUTOMATED SURFACE MOUNT ASSEMBLY
- LOW THRESHOLD DRIVE

DESCRIPTION

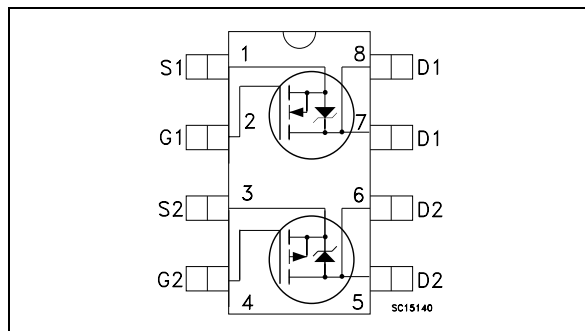
This Power MOSFET is the latest development of STMicroelectronics unique "Single Feature Size™" strip-based process. The resulting transistor shows extremely high packing density for low on-resistance, rugged avalanche characteristics and less critical alignment steps therefore a remarkable manufacturing reproducibility.

APPLICATIONS

- DC/DC CONVERTERS
- BATTERY MANAGEMENT IN NOMADIC EQUIPMENT
- POWER MANAGEMENT IN CELLULAR PHONES



INTERNAL SCHEMATIC DIAGRAM



ABSOLUTE MAXIMUM RATINGS

Symbol	Parameter	N-CHANNEL	P-CHANNEL	Unit
V _{DS}	Drain-source Voltage (V _{GS} = 0)	30	30	V
V _{DGR}	Drain-gate Voltage (R _{GS} = 20 k Ω)	30	30	V
V _{GS}	Gate- source Voltage	± 20	± 20	V
I _D	Drain Current (continuous) at T _C = 25°C Single Operating	7	4	A
I _D	Drain Current (continuous) at T _C = 100°C Single Operating	4.4	2.5	A
I _{DM} (•)	Drain Current (pulsed)	28	16	A
P _{tot}	Total Dissipation at T _C = 25°C Dual Operating Total Dissipation at T _C = 25°C Single Operating	1.6 2		W W
T _{stg}	Storage Temperature	-60 to 150		°C
T _j	Max. Operating Junction Temperature	150		°C

(•) Pulse width limited by safe operating area.

Note: P-CHANNEL MOSFET actual polarity of voltages and current has to be reversed

STS7C4F30L

THERMAL DATA

Rthj-amb(1)	Thermal Resistance Junction-ambient	Single Operation	62.5	°C/W
T _I	Maximum Lead Temperature For Soldering Purpose	Dual Operating	78	°C/W
			300	°C

(1) when mounted on 0.5 in² pad of 2 oz. copper

ELECTRICAL CHARACTERISTICS (T_{case} = 25 °C unless otherwise specified)

OFF

Symbol	Parameter	Test Conditions		Min.	Typ.	Max.	Unit
V _{(BR)DSS}	Drain-source Breakdown Voltage	I _D = 250 µA, V _{GS} = 0	n-ch p-ch	30 30			V
I _{DSS}	Zero Gate Voltage Drain Current (V _{GS} = 0)	V _{DS} = Max Rating V _{DS} = Max Rating T _C = 125°C				1 10	µA µA
I _{GSS}	Gate-body Leakage Current (V _{DS} = 0)	V _{GS} = ± 20V V _{GS} = ± 20V	n-ch p-ch			±100 ±100	nA nA

ON

Symbol	Parameter	Test Conditions		Min.	Typ.	Max.	Unit
V _{GS(th)}	Gate Threshold Voltage	V _{DS} = V _{GS} I _D = 250 µA	n-ch p-ch	1 1	1.6 1.6	2.5 2.5	V V
R _{DS(on)}	Static Drain-source On Resistance	V _{GS} = 10 V I _D = 3.5 A V _{GS} = 10 V I _D = 2 A V _{GS} = 4.5 V I _D = 3.5 A V _{GS} = 4.5 V I _D = 2 A	n-ch p-ch n-ch p-ch		0.018 0.070 0.021 0.085	0.022 0.080 0.026 0.10	Ω Ω Ω Ω

DYNAMIC

Symbol	Parameter	Test Conditions		Min.	Typ.	Max.	Unit
g _{fs} (*)	Forward Transconductance	V _{DS} = 15 V I _D = 3.5 A V _{DS} = 15 V I _D = 2 A	n-ch p-ch		10 10		S S
C _{iss}	Input Capacitance		n-ch p-ch		1050 1350		pF pF
C _{oss}	Output Capacitance	V _{DS} = 25V, f = 1 MHz, V _{GS} = 0	n-ch p-ch		250 490		pF pF
C _{rss}	Reverse Transfer Capacitance		n-ch p-ch		85 130		pF pF

ELECTRICAL CHARACTERISTICS (continued)**SWITCHING ON**

Symbol	Parameter	Test Conditions		Min.	Typ.	Max.	Unit
$t_{d(on)}$	Turn-on Delay Time	N-CHANNEL $V_{DD} = 15\text{ V}$ $I_D = 3.5\text{ A}$ $R_G = 4.7\ \Omega$ $V_{GS} = 4.5\text{ V}$	n-ch p-ch		22 25		ns ns
t_r	Rise Time	P-CHANNEL $V_{DD} = 15\text{ V}$ $I_D = 2\text{ A}$ $R_G = 4.7\ \Omega$ $V_{GS} = 4.5\text{ V}$ (Resistive Load, Figure 1)	n-ch p-ch		60 35		ns ns
Qg	Total Gate Charge	N-CHANNEL $V_{DD} = 24\text{ V}$ $I_D = 7\text{ A}$ $V_{GS} = 5\text{ V}$	n-ch p-ch		17.5 12.5	23 16	nC nC
Qgs	Gate-Source Charge	P-CHANNEL $V_{DD} = 24\text{ V}$ $I_D = 4\text{ A}$ $V_{GS} = 5\text{ V}$ (see test circuit, Figure 2)	n-ch p-ch		4 5		nC nC
Qgd	Gate-Drain Charge		n-ch p-ch		7 3		nC nC

SWITCHING OFF

Symbol	Parameter	Test Conditions		Min.	Typ.	Max.	Unit
$t_{d(off)}$	Turn-off Delay Time	N-CHANNEL $V_{DD} = 15\text{ V}$ $I_D = 3.5\text{ A}$ $R_G = 4.7\ \Omega$ $V_{GS} = 4.5\text{ V}$	n-ch p-ch		42 125		ns ns
t_f	Fall Time	P-CHANNEL $V_{DD} = 15\text{ V}$ $I_D = 2\text{ A}$ $R_G = 4.7\ \Omega$ $V_{GS} = 4.5\text{ V}$ (Resistive Load, Figure 1)	n-ch p-ch		10 35		ns ns

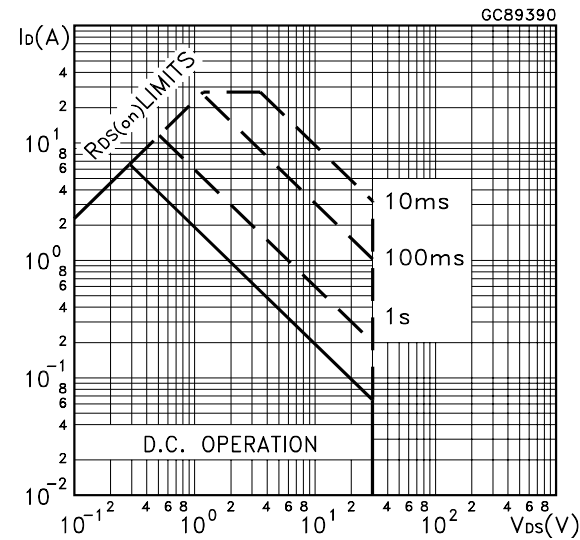
SOURCE DRAIN DIODE

Symbol	Parameter	Test Conditions		Min.	Typ.	Max.	Unit
I_{SD}	Source-drain Current		n-ch p-ch			7 4	A A
$I_{SDM}(\bullet)$	Source-drain Current (pulsed)		n-ch p-ch			28 16	A A
$V_{SD}(\ast)$	Forward On Voltage	$I_{SD} = 7\text{ A}$ $V_{GS} = 0$ $I_{SD} = 4\text{ A}$ $V_{GS} = 0$	n-ch p-ch			1.2 1.2	V V
t_{rr}	Reverse Recovery Time	N-CHANNEL $I_{SD} = 7\text{ A}$ $di/dt = 100\text{ A}/\mu\text{s}$ $V_{DD} = 15\text{ V}$ $T_J = 150\text{ }^\circ\text{C}$	n-ch p-ch		50 45		ns ns
Q_{rr}	Reverse Recovery Charge	P-CHANNEL $I_{SD} = 4\text{ A}$ $di/dt = 100\text{ A}/\mu\text{s}$ $V_{DD} = 15\text{ V}$ $T_J = 150\text{ }^\circ\text{C}$ (see test circuit, Figure 3)	n-ch p-ch		40 36		nC nC
I_{RRM}	Reverse Recovery Current		n-ch p-ch		1.6 1.6		A A

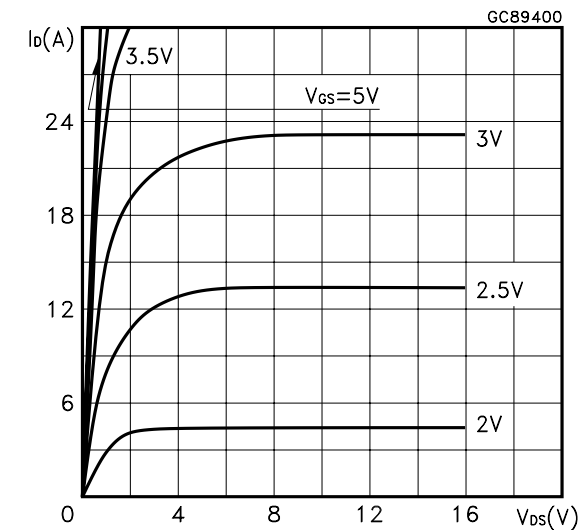
(*) Pulsed: Pulse duration = 300 μs , duty cycle 1.5 %.

(•) Pulse width limited by safe operating area.

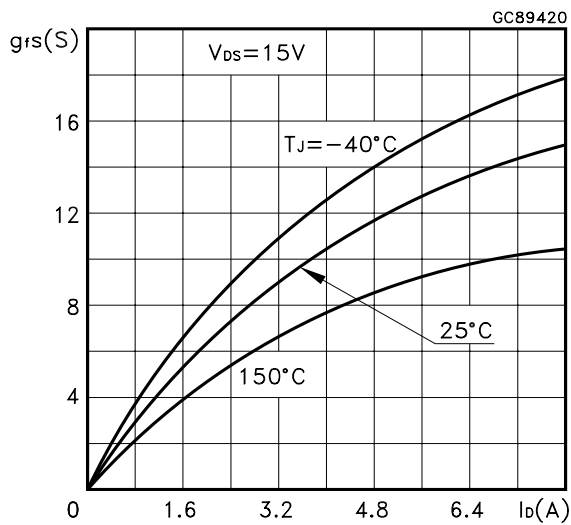
Safe Operating Area **n-ch**



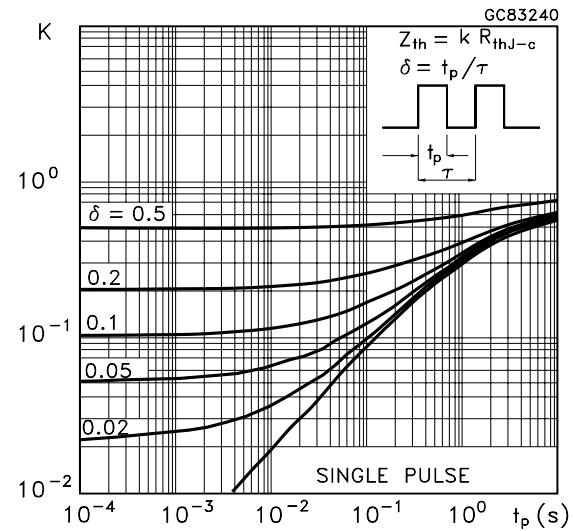
Output Characteristics **n-ch**



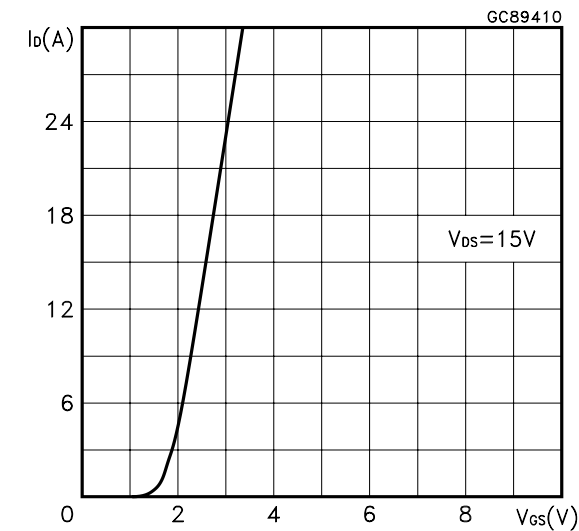
Transconductance **n-ch**



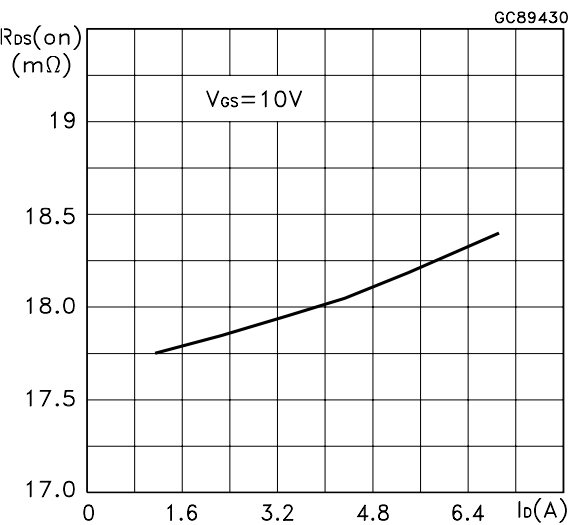
Thermal Impedance **n-ch**



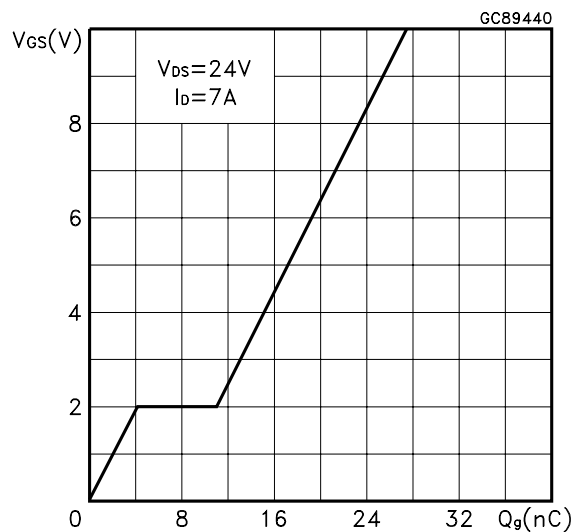
Transfer Characteristics **n-ch**



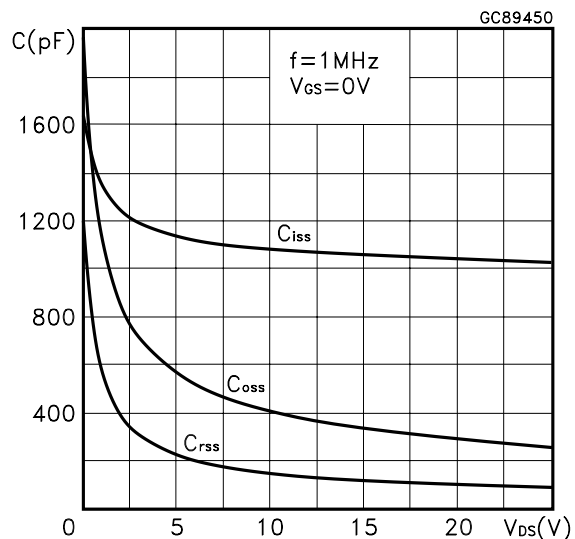
Static Drain-source On Resistance **n-ch**



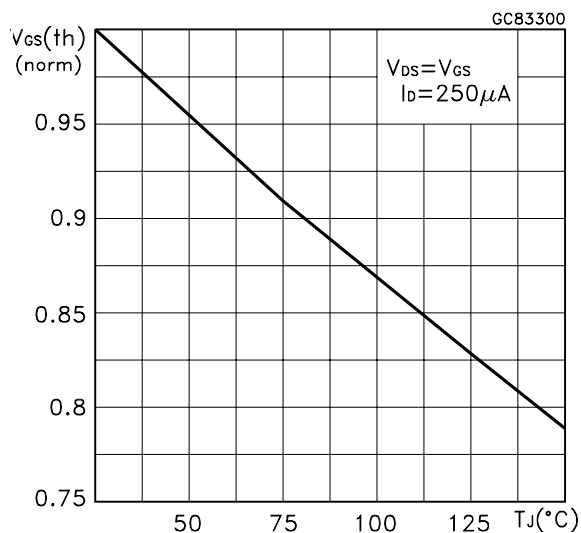
Gate Charge vs Gate-source Voltage **n-ch**



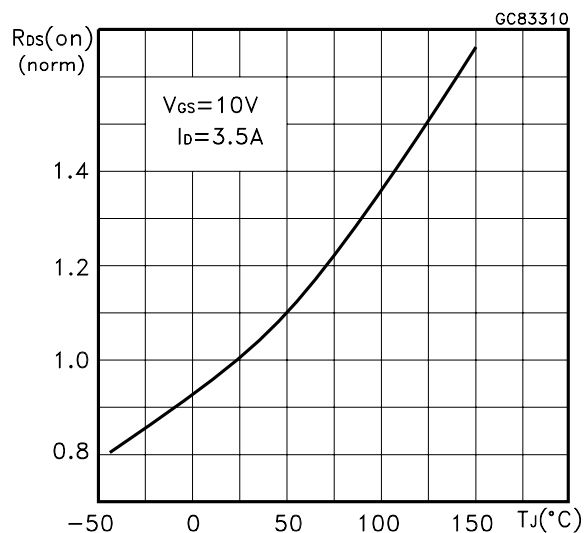
Capacitance Variations **n-ch**



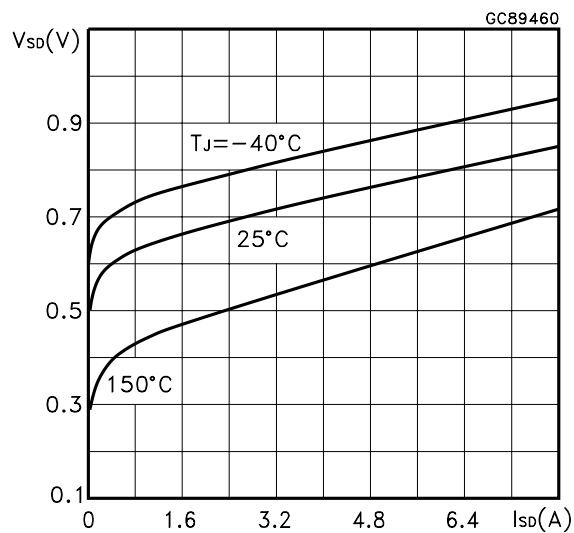
Normalized Gate Threshold Voltage vs Temperature **n-ch**



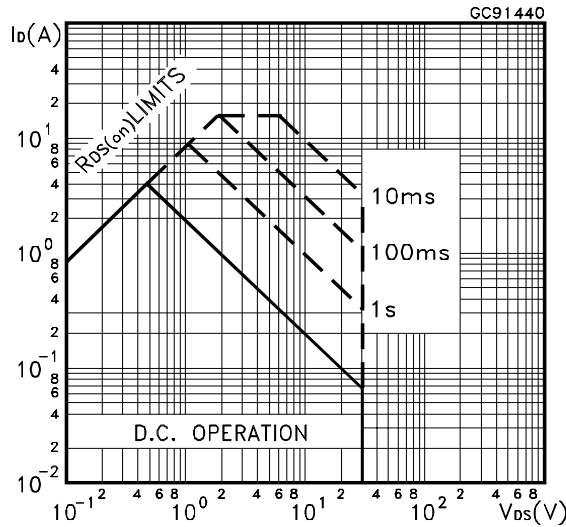
Normalized on Resistance vs Temperature **n-ch**



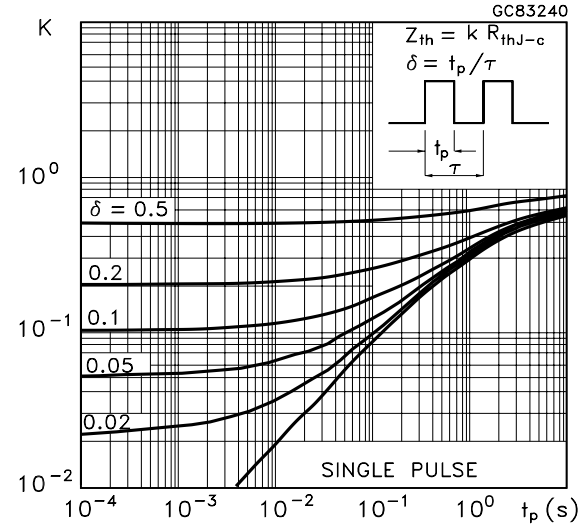
Source-drain Diode Forward Characteristics **n-ch**



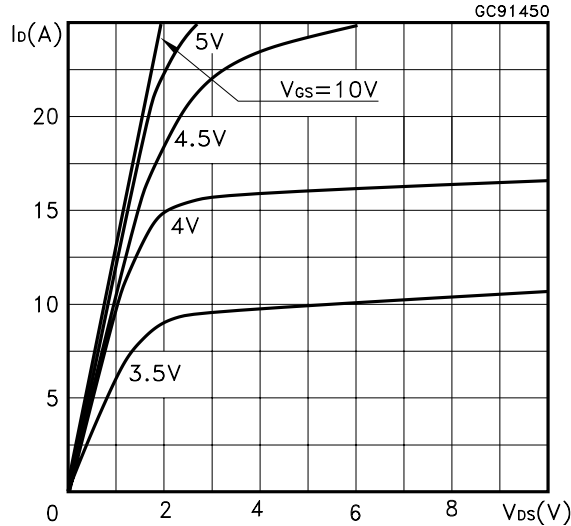
Safe Operating Area **p-ch**



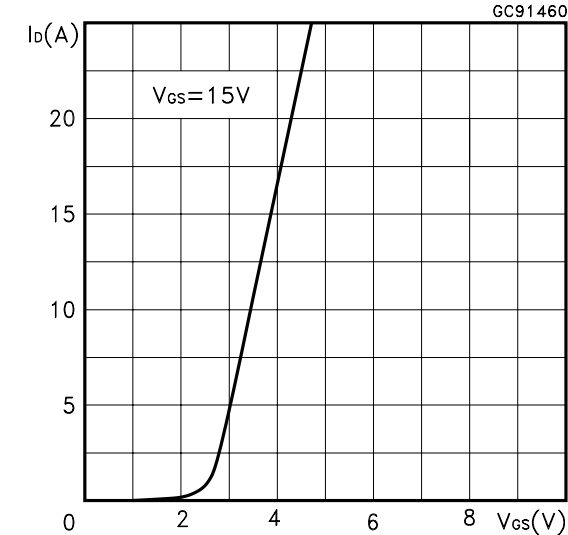
Thermal Impedance **p-ch**



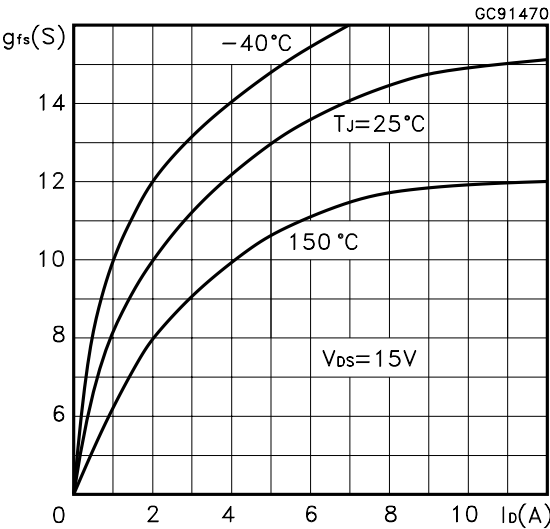
Output Characteristics **p-ch**



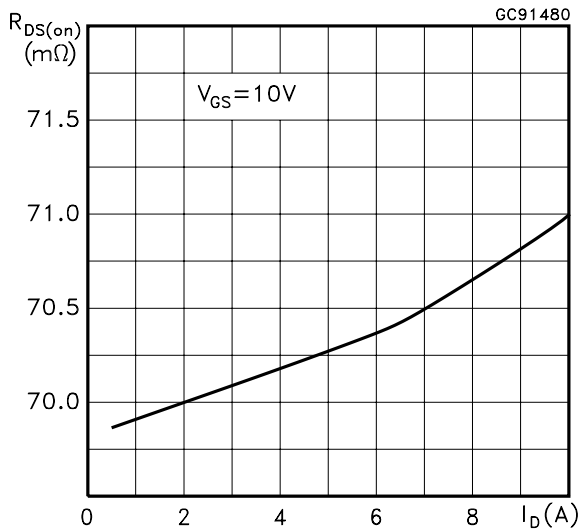
Transfer Characteristics **p-ch**



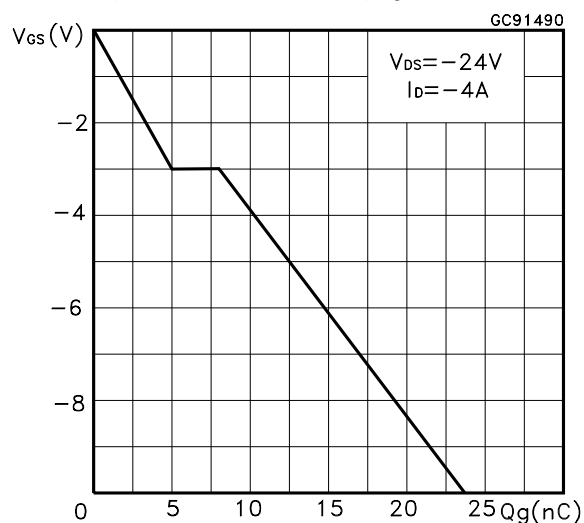
Transconductance **p-ch**



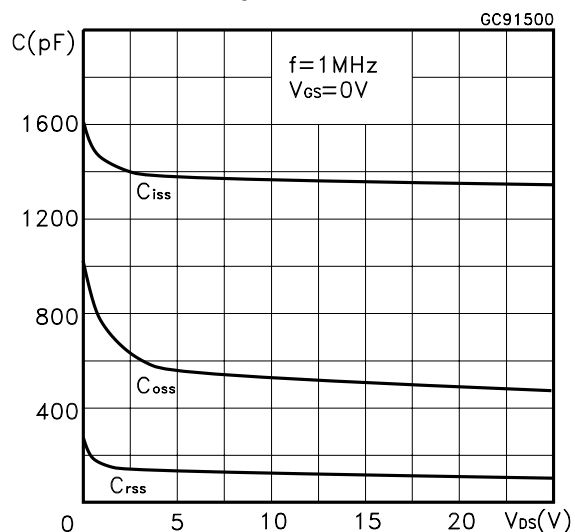
Static Drain-source On Resistance **p-ch**



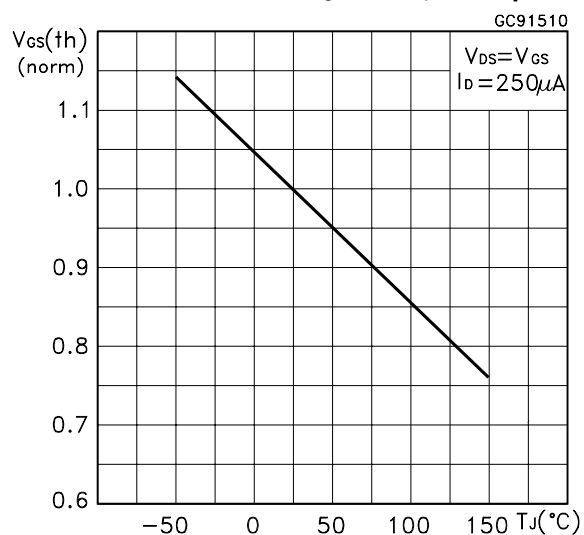
Gate Charge vs Gate-source Voltage **p-ch**



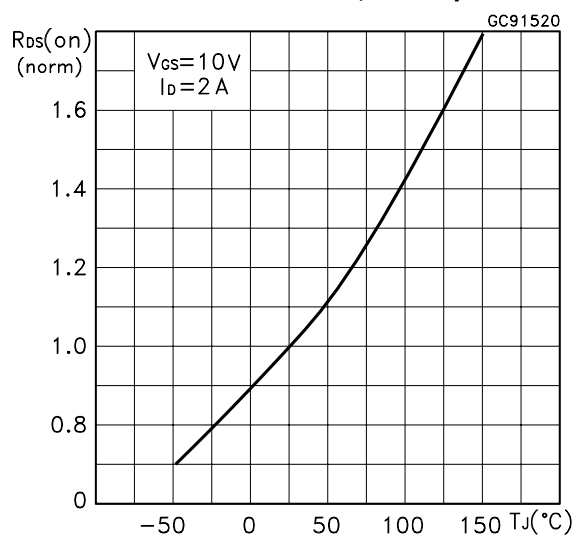
Capacitance Variations **p-ch**



Normalized Gate Threshold Voltage vs Temperature **p-ch**



Normalized on Resistance vs Temperature **p-ch**



Source-drain Diode Forward Characteristics **p-ch**

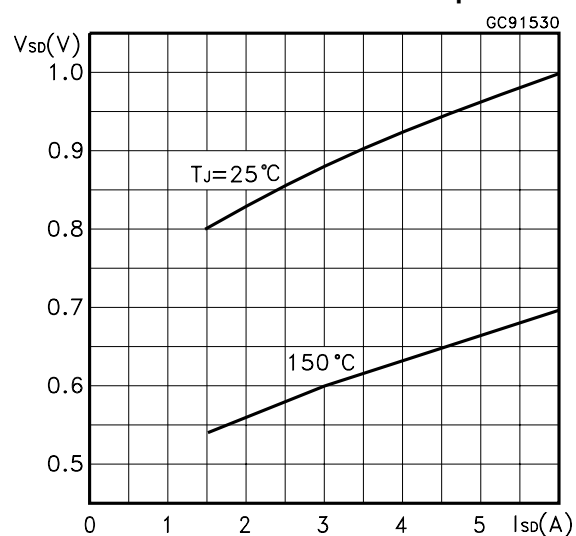


Fig. 1: Switching Times Test Circuits For Resistive Load

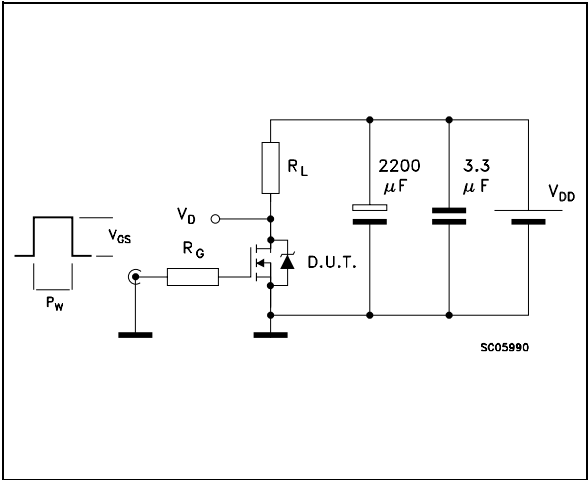


Fig. 2: Gate Charge test Circuit

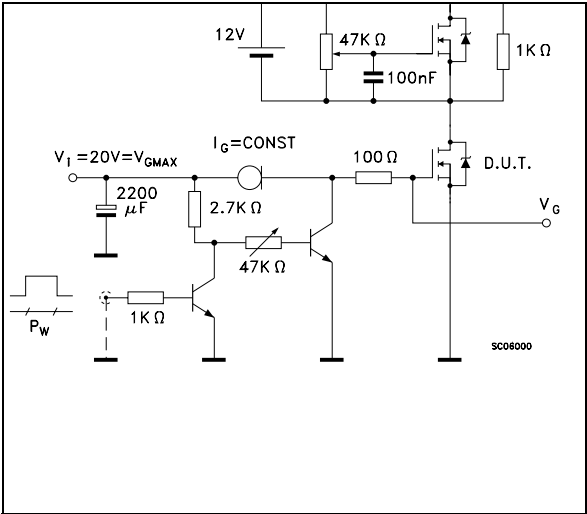
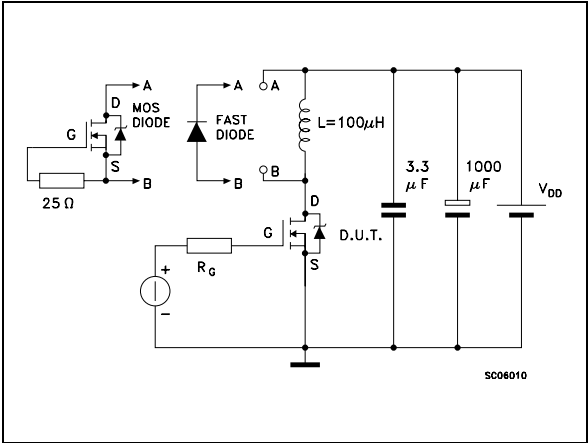
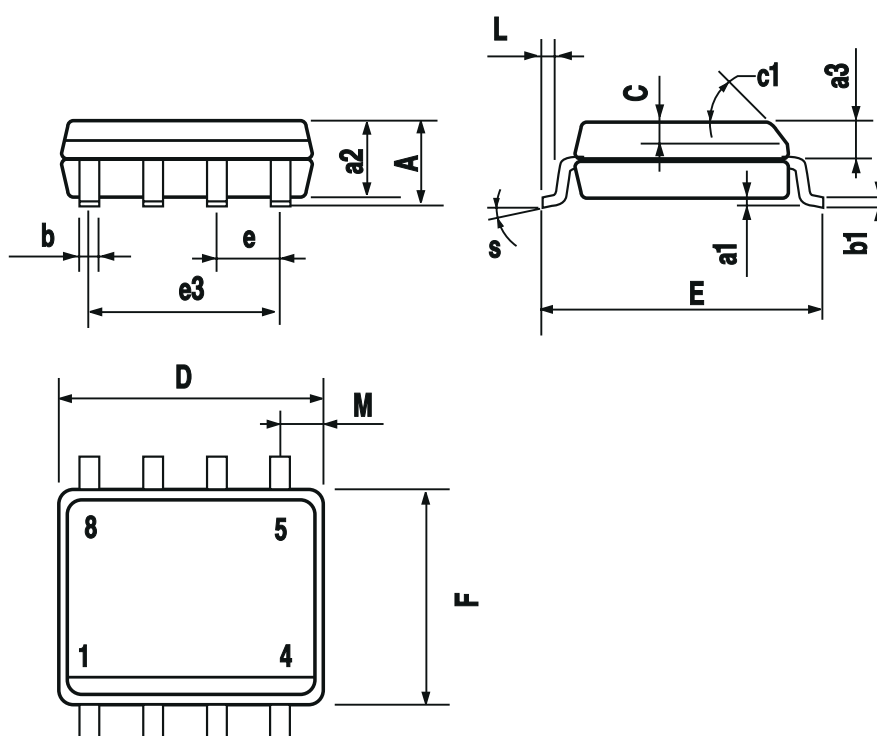


Fig. 3: Test Circuit For Diode Recovery Behaviour



SO-8 MECHANICAL DATA

DIM.	mm			inch		
	MIN.	TYP.	MAX.	MIN.	TYP.	MAX.
A			1.75			0.068
a1	0.1		0.25	0.003		0.009
a2			1.65			0.064
a3	0.65		0.85	0.025		0.033
b	0.35		0.48	0.013		0.018
b1	0.19		0.25	0.007		0.010
C	0.25		0.5	0.010		0.019
c1	45 (typ.)					
D	4.8		5.0	0.188		0.196
E	5.8		6.2	0.228		0.244
e		1.27			0.050	
e3		3.81			0.150	
F	3.8		4.0	0.14		0.157
L	0.4		1.27	0.015		0.050
M			0.6			0.023
S	8 (max.)					



0016023

Information furnished is believed to be accurate and reliable. However, STMicroelectronics assumes no responsibility for the consequences of use of such information nor for any infringement of patents or other rights of third parties which may result from its use. No license is granted by implication or otherwise under any patent or patent rights of STMicroelectronics. Specifications mentioned in this publication are subject to change without notice. This publication supersedes and replaces all information previously supplied. STMicroelectronics products are not authorized for use as critical components in life support devices or systems without express written approval of STMicroelectronics.

The ST logo is registered trademark of STMicroelectronics
® 2001 STMicroelectronics - All Rights Reserved

All other names are the property of their respective owners.

STMicroelectronics GROUP OF COMPANIES
Australia - Brazil - China - Finland - France - Germany - Hong Kong - India - Italy - Japan - Malaysia - Malta - Morocco -
Singapore - Spain - Sweden - Switzerland - United Kingdom - U.S.A.

<http://www.st.com>