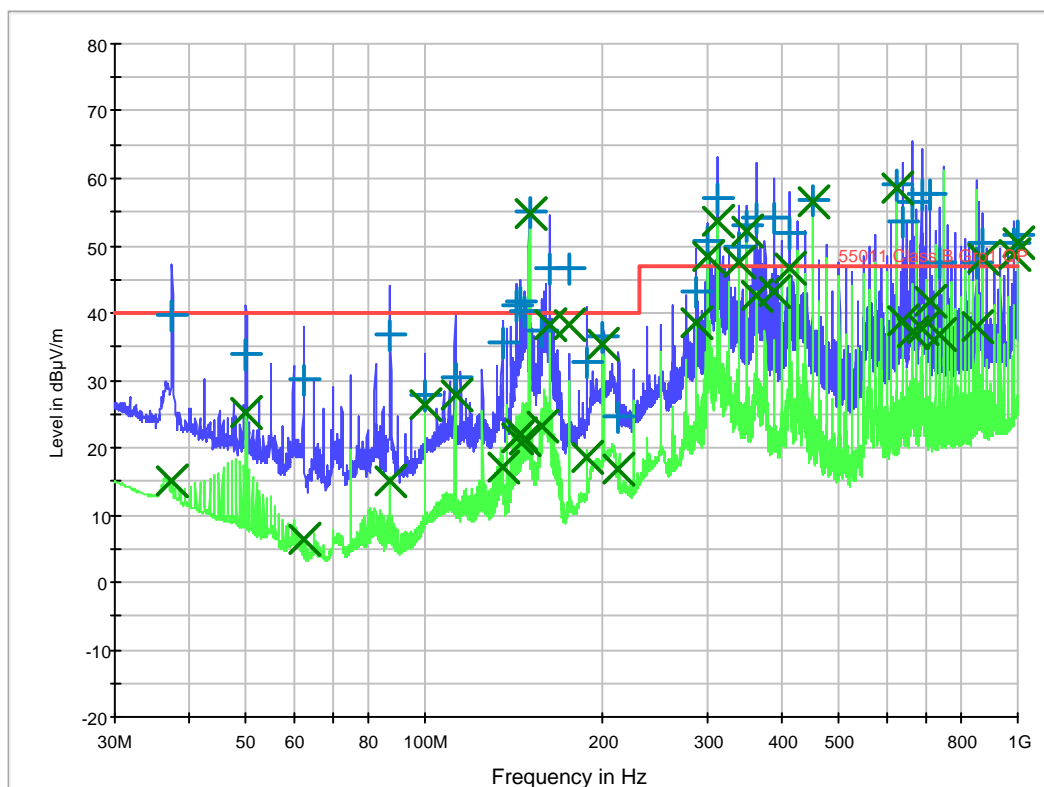


EMC32 Report

Common Information

Test Description: W2022A; 30M-1G; horiz 1m; Oszi Eingänge 50Ohm;
 Test Description: Pk und AV Nachmessung QP
 Operator Name: Brunowe
 Comment: 11.04.2012



Result Table_Single

Frequency (MHz)	MaxPeak (dBµV/m)	QuasiPeak (dBµV/m)	Average (dBµV/m)	Meas. Time (ms)	Bandwidth (kHz)	Height (cm)	Polarization	Corr. (dB)
37.500000	---	39.7	15.1	50.0	120.000	100.0	H	21.8
49.980000	---	34.0	25.3	50.0	120.000	100.0	H	15.9
62.520000	---	30.2	6.2	50.0	120.000	100.0	H	10.7
87.480000	---	36.9	15.0	50.0	120.000	100.0	H	11.7
112.500000	---	30.5	27.8	50.0	120.000	100.0	H	14.0
100.020000	---	27.9	26.3	50.0	120.000	100.0	H	13.0
135.000000	---	35.6	17.1	50.0	120.000	100.0	H	15.2
142.500000	---	41.1	21.4	50.0	120.000	100.0	H	15.2
145.020000	---	41.8	22.0	50.0	120.000	100.0	H	15.2
147.480000	---	40.3	21.0	50.0	120.000	100.0	H	15.2
150.000000	---	55.1	54.6	50.0	120.000	100.0	H	15.2
157.500000	---	37.3	23.2	50.0	120.000	100.0	H	14.9

162.480000	---	46.7	38.2	50.0	120.000	100.0	H	14.7
175.020000	---	46.8	38.4	50.0	120.000	100.0	H	14.7
187.500000	---	32.7	18.5	50.0	120.000	100.0	H	13.1
199.980000	---	36.6	35.3	50.0	120.000	100.0	H	13.6
212.460000	---	24.6	16.8	50.0	120.000	100.0	H	14.7
287.520000	---	43.2	38.5	50.0	120.000	100.0	H	16.0
300.000000	---	50.7	48.3	50.0	120.000	100.0	H	17.0
312.480000	---	57.0	53.5	50.0	120.000	100.0	H	17.3
337.500000	---	49.9	47.5	50.0	120.000	100.0	H	17.5
349.980000	---	53.0	52.1	50.0	120.000	100.0	H	18.2
362.520000	---	54.3	42.7	50.0	120.000	100.0	H	18.8
387.480000	---	54.3	43.3	50.0	120.000	100.0	H	18.8
412.500000	---	51.8	46.7	50.0	120.000	100.0	H	20.4
450.000000	---	56.8	56.6	50.0	120.000	100.0	H	20.4
625.020000	---	59.3	58.4	50.0	120.000	100.0	H	23.9
637.500000	---	53.6	38.9	50.0	120.000	100.0	H	24.2
662.520000	---	56.6	37.2	50.0	120.000	100.0	H	24.8
687.480000	---	57.7	37.6	50.0	120.000	100.0	H	25.1
712.500000	---	57.8	41.7	50.0	120.000	100.0	H	25.1
737.520000	---	47.5	36.9	50.0	120.000	100.0	H	26.1
850.020000	---	47.5	37.9	50.0	120.000	100.0	H	26.1
874.980000	---	50.4	48.3	50.0	120.000	100.0	H	27.5
987.480000	---	50.4	48.7	50.0	120.000	100.0	H	27.5
1000.000000	---	51.5	50.4	50.0	120.000	100.0	H	30.1

(continuation of the "Result Table_Single" table from column 14 ...)

Frequency (MHz)	Comment
37.500000	
49.980000	
62.520000	
87.480000	
112.500000	
100.020000	
135.000000	
142.500000	
145.020000	
147.480000	
150.000000	
157.500000	
162.480000	
175.020000	
187.500000	
199.980000	
212.460000	
287.520000	
300.000000	
312.480000	
337.500000	
349.980000	
362.520000	
387.480000	
412.500000	
450.000000	
625.020000	
637.500000	
662.520000	
687.480000	
712.500000	
737.520000	
850.020000	
874.980000	
987.480000	
1000.000000	