



FLOW



TEMPERATURE



HUMIDITY

# Flow Sens FS1L / FS1LA

## Thermal Mass Flow Sensor for all-purpose use in Liquids

### Product

---

The Flow Sens is the result of continuous development of IST AG quality products. The layout of the Sensor that is optimised for measurements in liquids consists of two temperature depending platinum-resistors, both deposited on one chip. The low-ohm resistor with a small area is used as a heater, whereas the other high-ohm resistor serves to measure the reference temperature. Using a bridge circuit, the differing resistance value of two elements leads to different (self) heating. The (self) heating is dependent upon the applied voltage, the mass flow, and the media in which the sensor is located. Higher voltage increases self heating, a higher flow rate increases cooling. If the self heating is kept constantly by a suitable controller, the voltage increases with higher flow rates and therefore becomes a measure for the mass flow. As a result of his little thermal mass, this sensor has fast heating and cooling response times. The measuring principle of the sensor can be used for large operation ranges. The Flow Sens is also available with a plastic housing of  $\varnothing$  6mm. This option provides the user with ideal opportunities to incorporate the element into custom-built applications or specific housings, e.g. into a T-piece.

### Advantages

---

- Easy adaptable for different applications or into housings
- Simple signal processing and calibration
- Insensitive to contamination
- No moving parts
- Excellent reproducibility
- Excellent long -term stability
- Best price-performance ratio

### Applications

---

- HVAC and building control solutions
- Automotive industry
- Medical devices
- Device monitoring
- Cooling devices
- Food industry



INNOVATIVE SENSOR TECHNOLOGY

IST AG, Industriestrasse 2, CH-9630 Wattwil, Switzerland, Phone (+)41 71 987 73 73, Fax (+)41 71 987 73 77  
e-mail [info@ist-ag.com](mailto:info@ist-ag.com), [www.ist-ag.com](http://www.ist-ag.com)



# Flow Sens FS1L / FS1LA

## Thermal Mass Flow Sensor for all-purpose use in Liquids

### Technical Data

Measuring principle	thermal
Measuring range	0.01 ... 10 m/s (higher rates upon request)
Accuracy	< 3% current measuring value (dependent on electronic and calibration)
Warm up time	< 1 min (depending on mounting)
Response time	< 100 ms (depending on velocity and dT)
Temperature range	-30 ... + 150 °C
Temperature sensitivity	< 0.1 %/K (dependent on electronic)
Electrical connection	3 pins, Leads AWG30, insulated with PTFE, or custom specific
Heater	$R_H(0^\circ\text{C}) = 45 \Omega \pm 0.5\%$
Referenz element	$R_S(0^\circ\text{C}) = 1200 \Omega \pm 0.5\%$
Required Voltages	typical 0 - 10 V at $dT = 10 \text{ K}$
Dielectric strength	$\pm 10 \text{ V}$ (! heater rating ! dependent on flow)
Substrate material	ceramic

In general

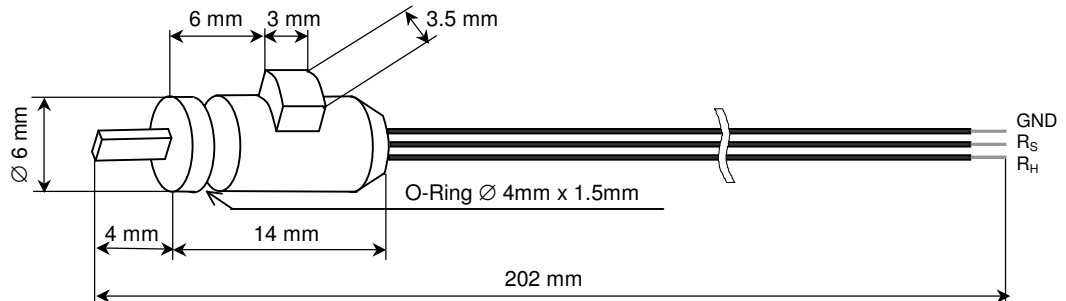
All data are temporary and valid in water. Other media and higher requirements upon request. No responsibility accepted.

### Construction size

FS1L.0.1L.195



FS1L.A.1L.195



INNOVATIVE SENSOR TECHNOLOGY



# Flow Sens FS1L / FS1LA

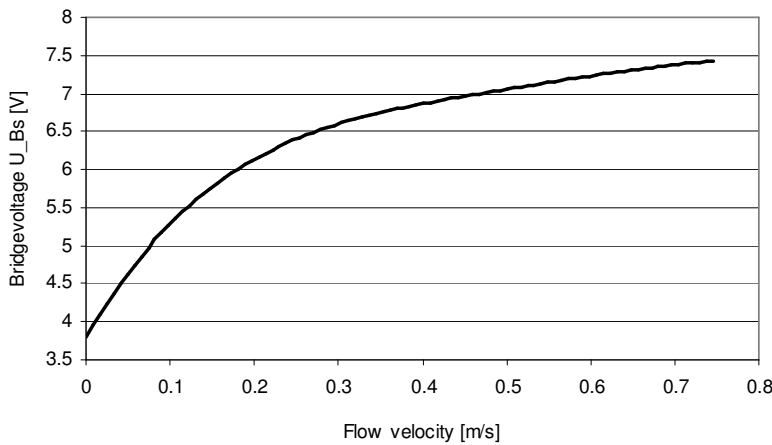
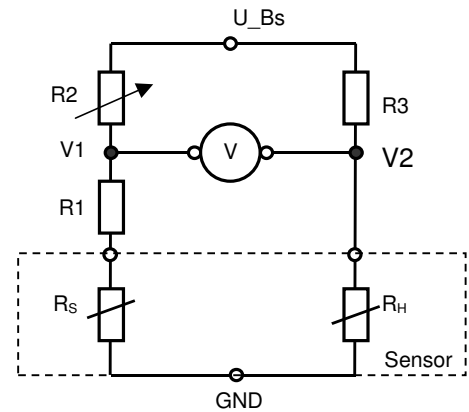
## Thermal Mass Flow Sensor for all-purpose use in Liquids

### Electronic circuit recommendation

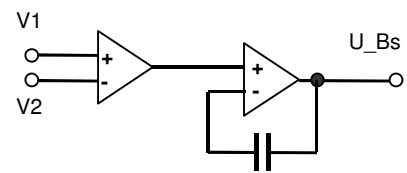
As shown on the scheme to the right, the heater  $R_H$  and sensor  $R_S$  need to be connected in a bridge circuit. It is essential to determine the correct values of the resistors  $R_1$ ,  $R_2$ , and  $R_3$ . The bridge is in balance as soon as the desired temperature difference between  $R_S$  and  $R_H$  has reached e.g. 10K. At a changing flow the bridge voltage  $U_{Bs}$  needs to be controlled in dependence of the bridge balance  $V_1$ - $V_2$ . The values for  $R_1$ ... $R_3$  are depending on the temperature difference  $dT$  and the medium which should be measured. We will provide you with the values of  $R_1$ ... $R_3$ , depending on the application.

For calibration the  $R_2$  needs to be adjusted within a range of  $\pm 5\%$ .

The method of adjustment relies on the application.



Typical signal – curve between 0 ... 0.8 m/s

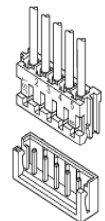


Principle of the heating controller

### Option

The electric connection can be provided customer-specific.

If a connector is requested we provide e.g. the JST connector EHR-3 with 3 pins, polarized and with a latch locking system.



INNOVATIVE SENSOR TECHNOLOGY

