



μ-blox ag
Zürcherstrasse 68
CH-8800 Thalwil
Switzerland
<http://www.u-blox.ch>

Firmware Update Manual

– μ-blox GPS-MS1/E and GPS-PS1/E –

30th October 2000

Focus

This documentation describes the procedure and required wiring to enable the user to update firmware of the GPS receiver's internal flash memory. This documentation applies to the following GPS receivers:

- GPS-PS1, GPS-PS1E
- GPS-MS1, GPS-MS1E
- GPS-E1 equipped with GPS-MS1 or GPS-MS1E
- GPS-E1 equipped with GPS-PS1 or GPS-PS1E

Contents

1	Introduction	4
2	Preparing the Update Procedure	5
2.1	GPS-E1	5
2.1.1	GPS-E1 with GPS-PS1 (Top View)	5
2.1.2	GPS-E1 with GPS-MS1 or GPS-MS1E	6
2.2	GPS-MS1/GPS-MS1E embedded in a custom system	8
2.3	GPS-PS1/GPS-PS1E embedded in a custom system	9
3	Using gpsxs-dl.exe	11
3.1	Installation	11
3.2	Step-by-step instructions	11
4	Modifying Cold-Start Defaults	16
4.1	Parameters that can be modified	17
5	Advanced Settings	23
5.1	The Options Dialog	23
5.2	Command Line Parameters	25
6	Troubleshooting	27

Chapter 1

Introduction

The firmware¹ of μ -blox GPS receivers is constantly being improved and new features are added. To allow users of these receivers to utilize new releases of the firmware, a tool is available to update the on-board Flash-Memory².

Before running the update tool, a cable must be attached from your PC to the serial port of the GPS receiver. See chapter 2 for instructions on how to set this up, depending on your system.

Chapter 3 describes the installation of the utility software and step-by-step instructions on how to use this tool.

Related Documents

For more information, please refer to the following documents:

- GPS-MS1 Single-Chip GPS Receiver Datasheet, μ -blox AG
- GPS-MS1E Single-Chip GPS Receiver Datasheet, μ -blox AG
- GPS-PS1 GPS Receiver Module Datasheet, μ -blox AG
- GPS-PS1E GPS Receiver Module Datasheet, μ -blox AG
- GPS-E1 User's Manual, μ -blox AG

Datasheets can be accessed online at <http://www.u-blox.ch>.

How to get the latest firmware

New firmware is distributed electronically over the Internet, only. Point your Web Browser to <http://www.u-blox.ch/restricted/update.html>. To access these pages, you can register at <http://www.u-blox.ch/register.html>.

¹Firmware: A piece of software for an embedded processor

²Flash Memory: A non-volatile storage medium that can be programmed by software

Chapter 2

Preparing the Update Procedure

2.1 GPS-E1

There are two versions of the GPS-E1 kit. The update procedure is different for the two versions.

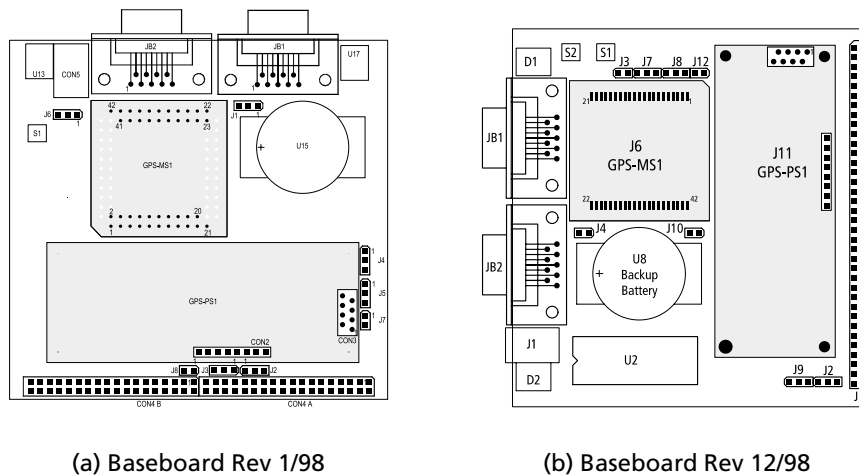


Figure 2.1: GPS-E1 Baseboard

2.1.1 GPS-E1 with GPS-PS1 (Top View)

1. Disconnect the power plug from the GPS-E1 unit.
2. Open the GPS-E1 housing with a screwdriver.
3. Please identify the hardware revision number of the GPS-PS1. This number is located close to the μ -blox logo and is a four-digit code, separated with a slash.

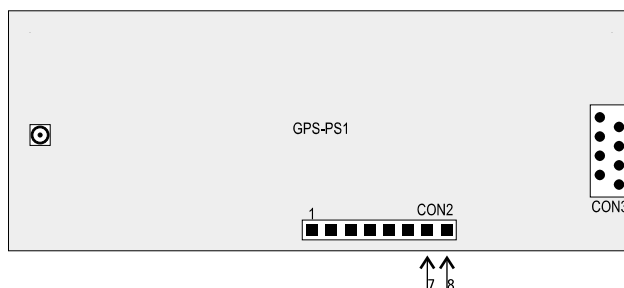


Figure 2.2: GPS-PS1 Update Pin Position

Note – *GPS-PS1 hardware revision 02/98 can not be reprogrammed by the user and must be returned to the factory for an update.*

4. For hardware revision 04/98 and higher, shorten the circuit on the optional connector CON2 on GPS-PS1, Pin 7 and 8. (See figure 2.2)
5. Connect the serial cable to Port B.
6. Power the unit by connecting the power plug to the GPS-E1 Unit.

The system is now in test mode. After reprogramming the unit as described in chapter 3, disconnect power, remove the connection on CON2 and close the housing.

2.1.2 GPS-E1 with GPS-MS1 or GPS-MS1E

Depending on the GPS-E1 Base Board version, the procedure to update the firmware is different.

GPS-E1 Baseboard Revision 1/98

1. Disconnect the power plug from the GPS-E1 unit.
2. Open the GPS-E1 housing with a screwdriver.
3. Locate jumper J8 on the GPS-E1 base board. Add a jumper so that the connection of J8 is closed. See figure 2.3 or refer to the GPS-E1 User's Manual, Appendix A.
4. Connect the serial cable from your PC to port B.

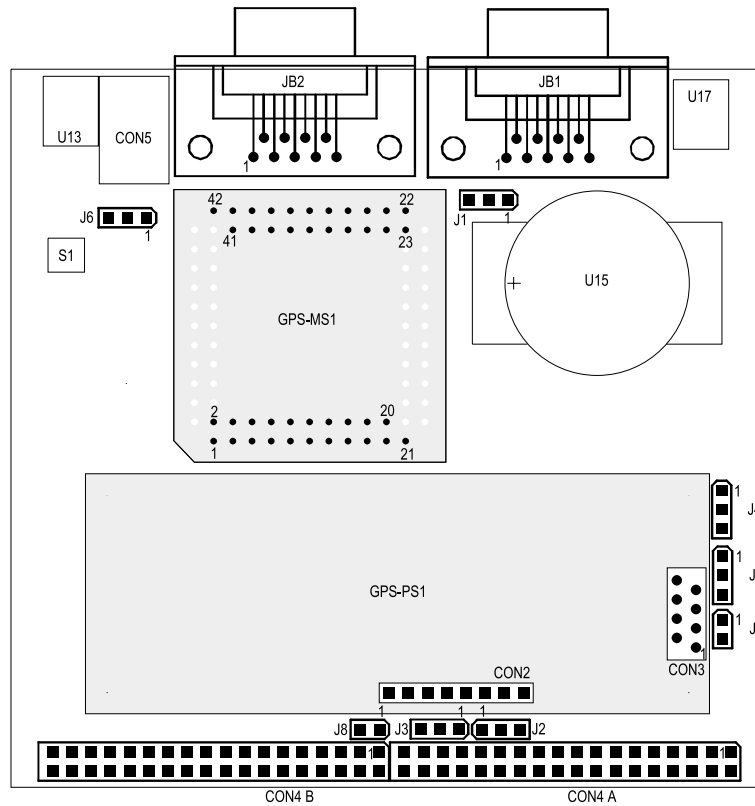


Figure 2.3: GPS-E1 Jumper Locations, Baseboard Version 1/98

5. Power the unit by connecting the power plug to the GPS-E1 Unit.

The system is now in test mode. After reprogramming the unit as described in chapter 3, disconnect power, remove the jumper and close the housing.

GPS-E1 Baseboard Revision 12/98

1. Connect the serial cable from your PC to port B.
2. Leave the GPS-E1 unit powered.
3. Open the GPS-E1 housing with a screwdriver.
4. Locate the pushbutton labelled F/W UPD. (S2 in figure 2.4)
5. Whilst pressing this button, push and release the RESET pushbutton(S1 in figure 2.4). Release the F/W button thereafter.

The system is now in test mode. After reprogramming the unit as described in chapter 3, close the housing.

1. Disconnect power from the system.
2. Connect signal `TEST_I` to VCC
3. Connect your PC's Serial Interface to Serial Port 1 of GPS-MS1 or GPS-MS1E.
4. Power the system.

Note – The receiver samples the `TEST_I` signal at power-up or after a rising edge on the `RESET` pin.

2.3 GPS-PS1/GPS-PS1E embedded in a custom system

1. Power down the system.
2. Locate the GPS-PS1 daughterboard and identify the Hardware Revision number. This number is located close to the μ -blox logo and is a four-digit code, separated with a slash.

Note – GPS-PS1 hardware revision 02/98 can not be reprogrammed by the user and must be returned to the factory for an update.

3. For hardware revision 04/98 and higher, close the circuit on the optional connector CON2, Pin 7 and 8. This enables Test mode.
4. Connect the serial cable to Port B signals (Signals `TX_B` and `RX_B`, pins 1 and 7 on the connector CON3).

Note – *The serial interface signals are 5V CMOS compatible. In order to obtain RS232 compatible levels which are needed to connect the module to a PC, use a level shifter circuitry, such as the 5V compatible MAX232 manufactured by Maxim.*

5. Power the system.

The system is now in test mode. After reprogramming the unit as described in chapter 3, disconnect power, remove the connection on CON2.

Chapter 3

Using gpsxs-dl.exe

`gpsxs-dl.exe` runs on IBM-compatible PCs running Microsoft Windows 95 or Microsoft Windows NT 4. It needs an unused serial port where the μ -blox GPS receiver is connected to. See chapter 2 for wiring instructions.

3.1 Installation

The following files are required to run the utility:

- `gpsxs-dl.exe` Main program
- `cygwin1.dll` Support library for `gpsxs-dl.exe`
- `flashldr.rec` Self test code for μ -blox GPS receivers
- `XXXXXXXX.s3` This file contains the firmware for GPS-MS1/E and GPS-PS1/E. Different types and versions of the firmware can be found on the μ -blox WWW site.

`gpsxs-dl.exe` can be run directly from a floppy disk. However, for best performance, we recommend that you copy all files to a directory on your hard disk.

3.2 Step-by-step instructions

Before starting the update procedure, you have to put the receiver into programming mode. See chapter 2 for instructions on how to enter this mode.

1. Start `gpsxs-dl.exe` by double clicking the icon. The Dialog Window shown below appears.

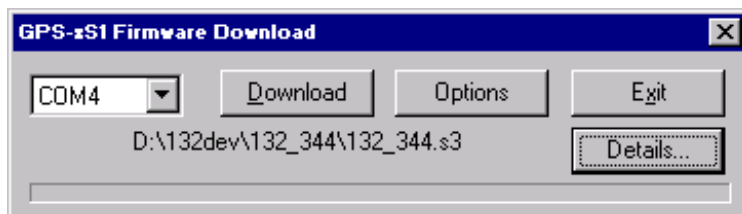


Figure 3.1: Main Screen

If you click onto the “Details” button, the window is enlarged. The window shows more insight information and details on the test- and download process.

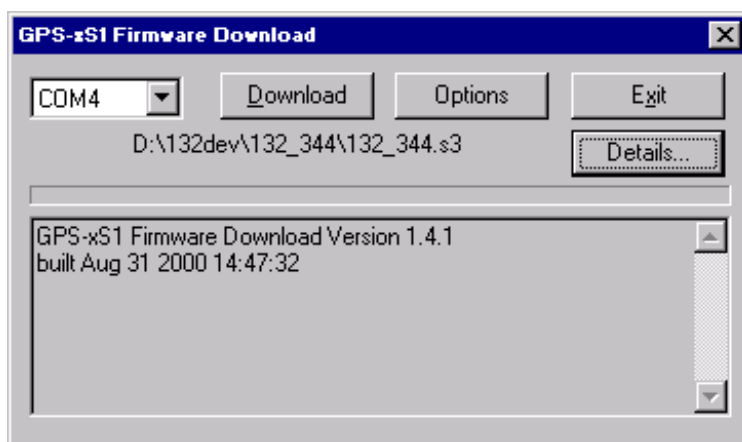


Figure 3.2: Main Screen Detail View

In case of trouble, you can use this information when contacting technical support.

2. Select the serial port where your receiver is connected in the drop down box on the left side of the tool.
3. Click on the “Options” button, and in the newly opened dialogbox, click onto the “...” Button to choose the S3-File to download.

Note – `gpsxs-dl.exe` also supports drag-n-drop, which allows you to drag a file from Windows Explorer to the program. When using drag-n-drop, the download process will start automatically.

In addition to that, you can register the file extension `.S3` to be handled by `gpsxs-dl.exe`. See your Operating System Manual for details how to do this.

4. Press “Download” to start the update procedure.

Note – If the procedure gets stuck without showing the “Testing Receiver” Message, the connection to the GPS receiver is broken or the receiver is not in test mode. Check cables and wiring.

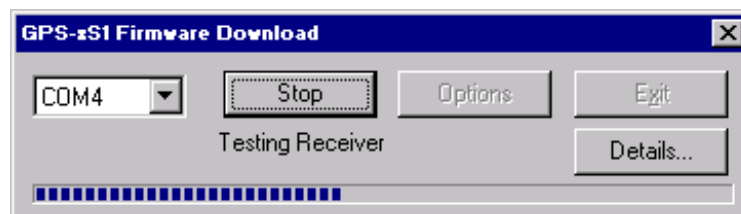


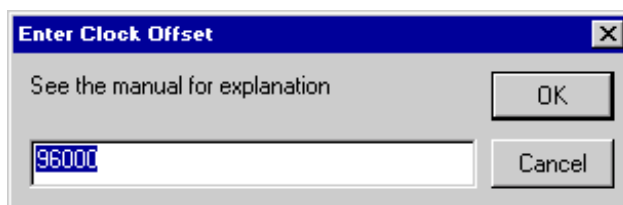
Figure 3.3: Testing Receiver

Note – If the serial port is in use by another application, an error message is shown. You need to terminate the application or driver that uses the serial port in order to download a new firmware using that port.

5. The receiver changes to test mode and performs extensive self tests of the receiver's components. These tests take around 20 seconds.

Note – If self test fails, a dialog box is shown, showing an error code. Please refer to section 6 for instructions on how to proceed.

Note – If the following window pops up after self test, then your receiver either had an empty flash memory, or and invalid firmware image.



The "Clock Offset" is a property of every receiver, and is determined during production test. If you don't know the clock offset of your receiver, use SiRF Demo to poll the Clock offset. The clock offset is in the range of 60000 to 120000 Hz. A standard default value is 96000.

6. If you enabled the "Adjust Settings" Mode in the Options screen, a dialog box will pop up. Please refer to section 4 for more information on these settings.
7. The receiver starts to download and reprogram the on-chip flash memory. Downloading the new firmware runs for approximately 2 minutes.

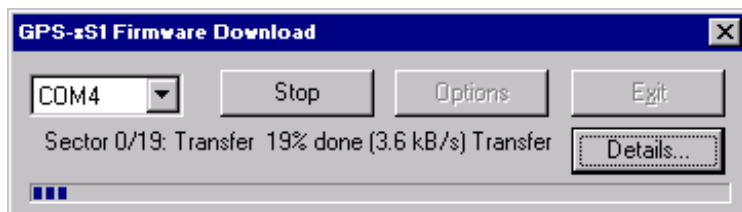


Figure 3.4: Download Progress

Note – *Do not interrupt this procedure. A partially reprogrammed flash memory could lead to invalid operation of the receiver and permanent damage to the components.*

8. If download has completed successfully, power down the receiver and disable test mode. Your receiver is ready to run with the new firmware. The GPS code is automatically started at the next power up.

Chapter 4

Modifying Cold-Start Defaults

How it works

Starting with Firmware Version 1.3.2 and Update Utility Version 1.3.3, a new feature has been added that provides the possibility to modify all cold-start default values on-the-fly. This feature code-named “Chamaeleon” works by parsing the generic S3 firmware file, and modifies values to user-defined settings.

The following two issues are important for the understanding of this concept:

- It is important to note that the new settings can only be applied by reprogramming the full GPS-MS1/E firmware, since the firmware itself is modified on the fly.
- The other important issue is that the settings you can modify in the the dialog box are only used at the first power up, or whenever the backup battery has been removed.

To enable this feature, please go to the “Options” screen, and check the “Adjust Settings” checkbox.

Note – *This feature is only available on firmware version 1.3.1 and above. If you use `gpsxs-dl.exe` with a firmware 1.3.0 or earlier, the dialog box will not be shown.*

4.1 Parameters that can be modified

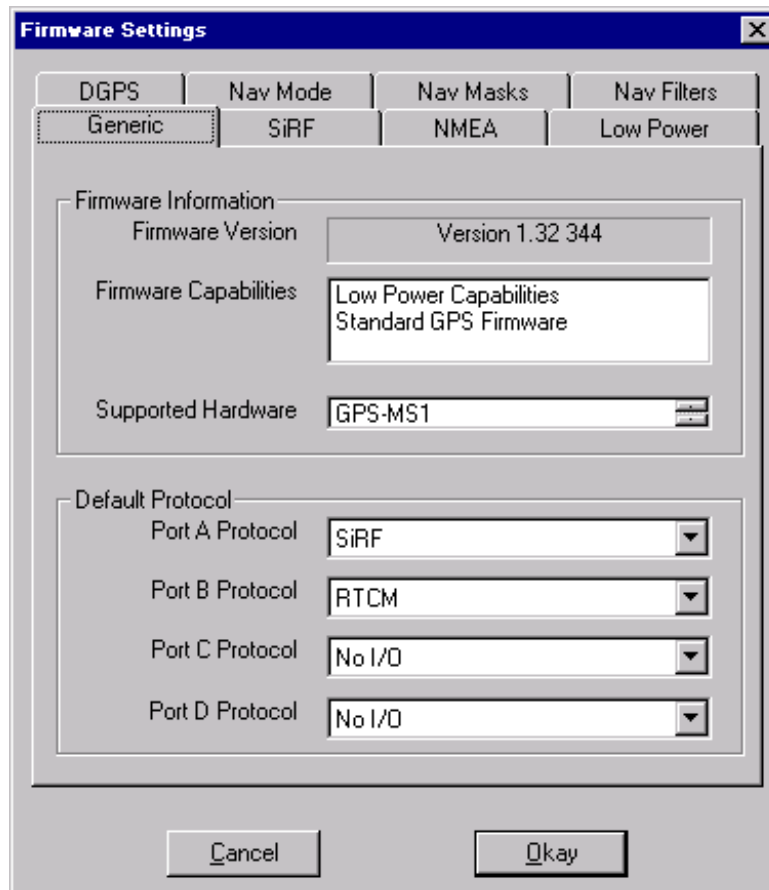


Figure 4.1: Adjust Settings: Generic

The upper part of the dialog box ("Generic") shows what the version and capabilities of the firmware file are. These items can not be modified. Shown are:

Firmware Version.....	The firmware major, minor and build number
Firmware Capabilities.....	The capabilities of this firmware image
Supported Hardware.....	On which hardware this code runs

In the lower part of the window, the coldstart default protocols are listed and can be modified:

Port A	The protocol which is in/output on Port A.
Port B	The protocol which is in/output on Port B.
Port C	The protocol which is in/output on Port C.
Port D	The protocol which is in/output on Port D.

Note – The following restrictions apply to the 4-Port Protocol Settings:

- 4-Port functionality is only available starting with firmware version 1.3.2
 - Do not select the same protocol on more than one port!
 - If you set a protocol for Ports C or D, Low Power Mode will not be available
 - Ports C and D are only available on GPS-MS1 and GPS-MS1E and are not supported for GPS-PS1 and GPS-PS1E
-

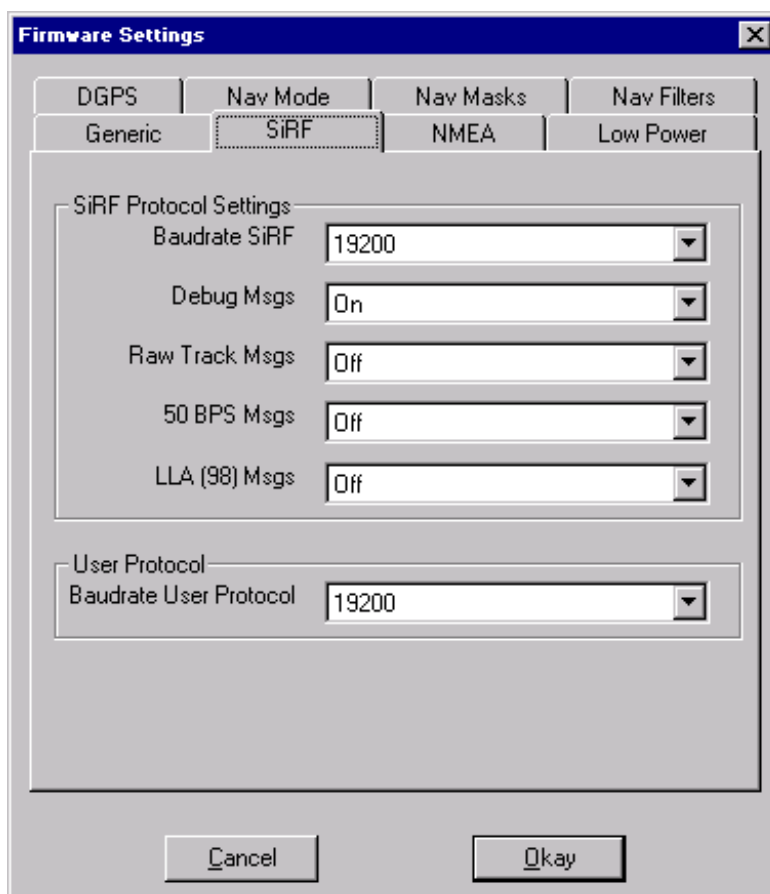


Figure 4.2: SiRF Protocol Settings

These settings are for the port you selected SiRF protocol as the default protocol.

Baudrate SiRF	The default baudrate used for SiRF protocol
Debug Messages.....	Defines whether Msg # 255 is transmitted by the unit or not.
Raw Track Messages.....	Defines whether Msg # 5 is transmitted by the unit or not.
50 BPS Messages.....	Defines whether Msg # 8 is transmitted by the unit or not.
LLA (98) Msgs	Defines if Msg # 98 (Enhanced Navigation) is transmitted by the unit (Firmware Version 1.3.4.).

Firmware Settings							
DGPS		Nav Mode		Nav Masks		Nav Filters	
Generic		SiRF		NMEA		Low Power	
NMEA Protocol Setting							
Baudrate		4800					
NMEA Messages	Period [s]	Checksum					
GGA	1	On					
GLL	1	On					
GSA	1	On					
GSV	1	On					
RMC	1	On					
VTG	1	On					
NMEA Datum		WGS 84					
Cancel				Okay			

Figure 4.3: NMEA protocol settings

The NMEA screen only makes sense if you have one port to use the “NMEA” protocol (in the “Generic” screen). Here, you define the default baud rate for NMEA mode. For each message, you can define the Message repetition period and checksum independently.

Baudrate This defines the default baudrate if the receiver is configured for NMEA protocol

XYZ Period..... This defines the time between messages, for each message separately, in seconds.

XYZ Checksum This allows to enable/disable the checksum for every command.

XYZ is a placeholder for the available message types GGA, GLL, GSV, GSA, VTG and RMC

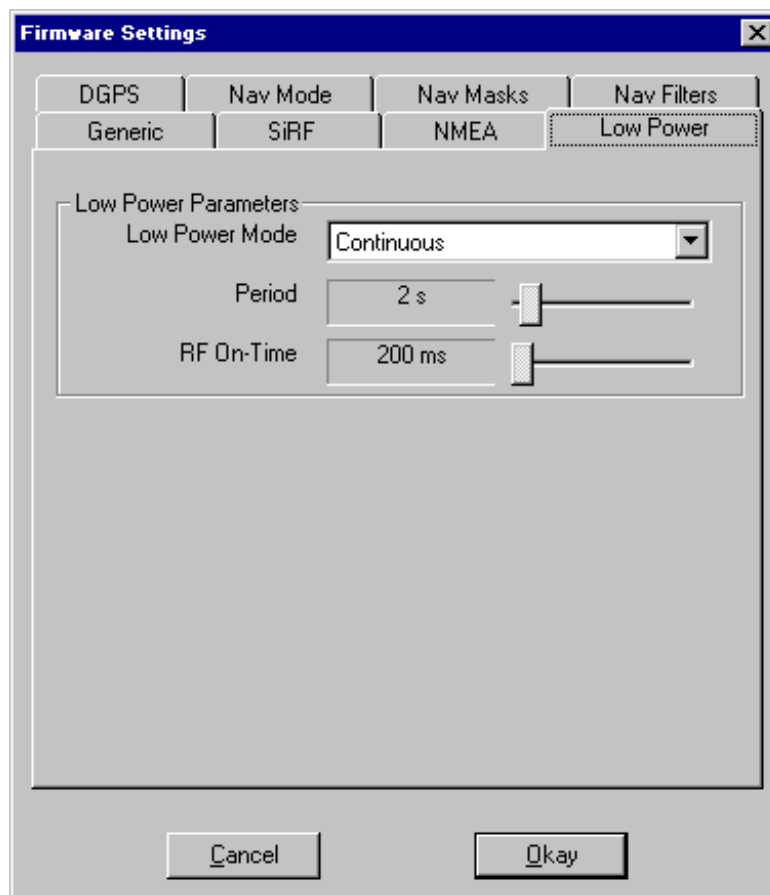


Figure 4.4: Low Power Mode Settings

This screen defines the low power mode. If you choose something different than “Continuous”, please be aware that you have to reconfigure the hardware using jumpers, if you are using the GPS-E1 kit.

Low Power Mode	This chooses between "Continuous", "Trickle Power" or "Push-to-fix" mode
Period	This gives the period between position fixes for trickle power mode
RF On-time	This gives the time for how long the unit is actively tracking satellites

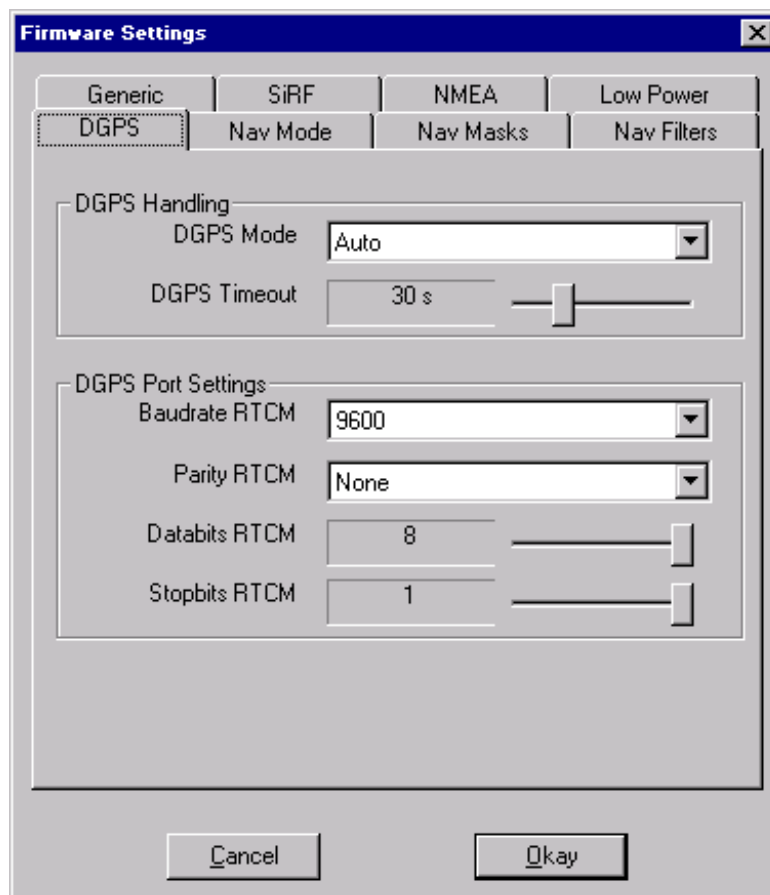
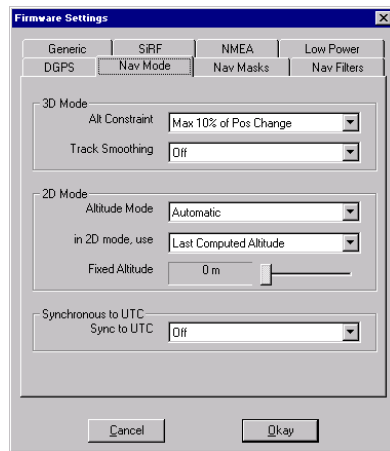
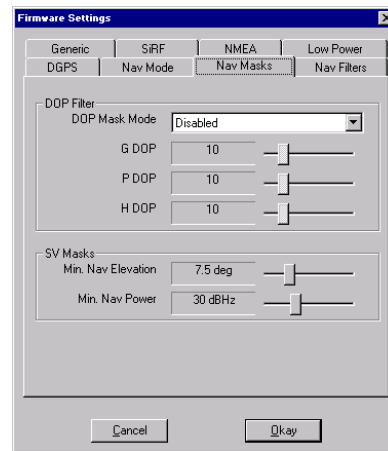


Figure 4.5: DGPS Settings

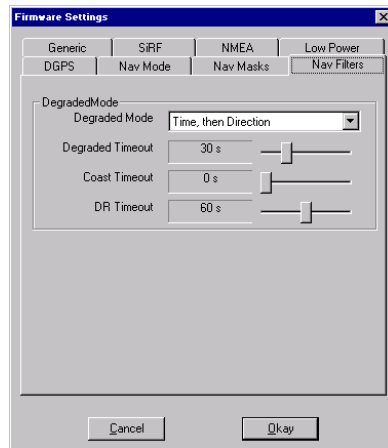
DGPS Handling	This gives the mode for DGPS usage
DGPS Timeout	This sets the time for how long correction data is considered valid and used to calculate a position fix.
Baudrate RTCM	These settings define the physical reception parameters of the DGPS correction data.
Parity RTCM	
Databits RTCM	
Stopbits RTCM	



(a) Navigation Mode



(b) Navigation Masks



(c) Navigation Filters

Figure 4.6: Navigation Parameters

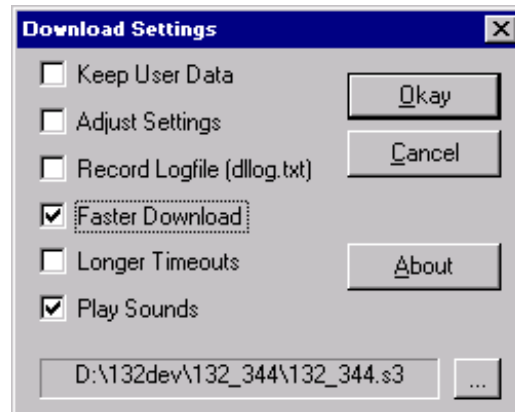
Please see the evaluation kit manual for a description of these Navigation Parameters.

Chapter 5

Advanced Settings

5.1 The Options Dialog

By clicking the “Details...” Button in the main window, the “Options” Window appears.



Keep User Data If “Keep User Data” is enabled, the contents of the flash sectors that are not used by the firmware is maintained. Do not enable this unless you understand the consequences of this parameter.

Note – *If Keep User Data is enabled, the sectors which are used for the firmware update and the very last sector do not keep their contents.*

Adjust Settings This checkbox enables/disables the “Modifying Cold-Start Defaults” Feature described in section 4.

Record Logfile If this option is enabled, the download process will be recorded in a logfile called `dllog.txt`. In case of a failed download process, this file can contain useful information for our customer support. This file will usually be placed where the executable `gpsxs-dl.exe` is stored.

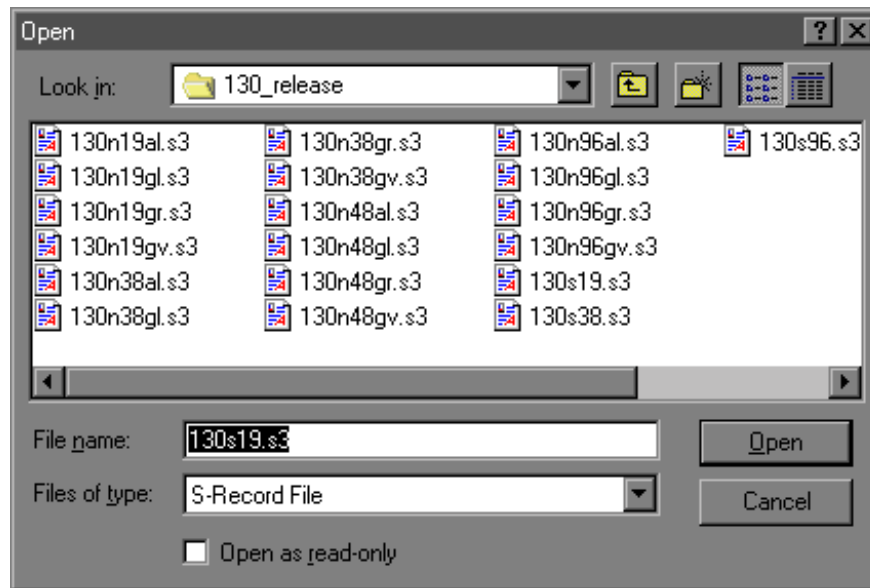
Faster Download Default download baudrate is 38.4 kBaud. If you enable this option, the ‘Erase & Write’ Step will be carried out at 57.6 kBaud. Some PCs may fail running their UART at this speed.

Note – *57.6 kBaud is supported on GPS-MS1 and GPS-PS1. GPS-MS1E and GPS-PS1E do NOT support 57600 Baud.*

Longer Timeouts If your machine is very slow, or if you keep getting ‘*Timeout! Connection to target failed*’ Error Messages, you can increase Timeout Values by enabling this option.

Play Sounds If this option is enabled, a sound is played upon completion or failure of the download process.

... If you press this button, a file selection dialog box appears and asks for the firmware to be downloaded.



About This shows the About dialog box.



5.2 Command Line Parameters

`gpsxs-dl.exe` supports the S3 file as a command line parameter. You can register the file type "S3" as an Open-Action to the `gpsxs-dl.exe` with the filename as a first argument, using Windows Explorer.

If you start `gpsxs-dl.exe` with the S3 file as an argument, the module will directly start downloading the firmware and won't wait for the "Download" Button to be pressed. Also, if the download has succeeded, the tool will terminate immediately. In addition, `gpsxs-dl.exe` supports command line arguments for settings in the

options dialog. Unlike other programs, the order in which the options are listed on the command line matters:

```
gpsxs-dl.exe [<s3file.s3> [<com> [<n1> [<n2> [<n3> [<n4>]]]]]]
    s3file.s3 -- Full Path/Filename to Firmware Image
                to be downloaded
    com        -- Serial Port ``COM1'', ``COM2'', ...
                or ``1'', ``2'', ...
    n1         -- 1: Adjust Settings,
                0: Do NOT adjust Settings
    n2         -- 1: Record a Logfile,
                0: Do NOT record a Logfile
    n3         -- 1: Use ``Faster Download''
                0: Do Normal Download
    n4         -- 0: Normal Timeouts
                1: Longer Timeouts
                2: Even Longer Timeouts
```

Examples:

```
gpsxs-dl.exe C:\tmp\firmware.s3 COM3
```

Downloads the C:\tmp\firmware.s3 file to
a receiver which is connected to COM3
an in test mode

```
gpsxs-dl.exe C:\firmware.s3 8 0 0 0 2
```

Downloads the C:\firmware.s3 file to
a receiver which is connected to COM8
an in test mode. Timeouts are long
than normal

Chapter 6

Troubleshooting

In case of a problem, a dialog box is shown, as seen below. The error code indicates the kind of problem that occurred.



If the download process fails, try to disable "Faster Download" and to enable "Longer Timeouts". The following table lists common error codes.

0x0001nnnn	The selected serial port is not available or used by another application. Please check the setting in the "COM" Drop-Down Box.
0x0002nnnn	The receiver didn't answer the requested operation. Please contact customer support.
0x0003nnnn	The receiver answered with an invalid response. This can be caused by bad wiring or a damaged board.
0x0004nnnn	Self Test failed.
0x0005nnnn	Reprogramming of the Flash Memory failed. The cause for this is either a damaged receiver or unreliable wiring from the PC to the Board.
0x0006nnnn	There has been a problem modifying the default values. Most probable cause is an invalid firmware image.
0x0007nnnn	There has been a problem modifying the default values. Most probable cause is an invalid firmware image.

Note – *If the receiver update has failed, try again! Even if the on-chip flash memory has been erased, the receiver can be reprogrammed.*

Technical Support

If you have problems updating the receiver, or wish to report a bug, please contact our technical support staff. Support is available through email by sending a message to `support@u-blox.ch` or calling +41(1)722-7474 (9 am to 5 pm Central European Time). Support is in English or German.

When contacting μ -blox Technical Support, please report the type of receiver you are using, the Hardware Revision number of your receiver, the version of `gpsxs-dl.exe`, and the full 8 hex digit error code that has been reported. Furthermore, record a log file ("`dllog.txt`") which will help the support engineers to track down the problem faster.

Frequently asked questions

Is a version of `gpsxs-dl.exe` available for Linux, MS-DOS, Solaris or other operating systems?

We currently have no plans to port the download utility to operating system other than Win32 based.

Is the protocol that is used to update the receiver documented?

The download process is based on three different, proprietary protocols which are undocumented at this stage.

On a slow machine, or a machine under heavy load, the download process sometimes terminates with an error code

Try increasing the Timeouts (Options->Longer Timeouts) which should solve the problem.

About This Document

This document contains information on a product under development at μ -blox ag. This information is intended to help you evaluate this product. μ -blox reserves the right to change or discontinue work on this product without notice.

Document Number: GPS.G1-X-00002-H

All trademarks in this document are the property of their respective owners. This document may, wholly or partially, be subject to change without notice.

Revision History		
Date	Revision	Changes
Oct. 5, 2000	GPS.G1-X-00002-H	Updated for Downloader Version 1.4.2
Jan. 12, 2000	GPS.G1-X-00002-G	Updated for Downloader Version 1.3.3
Apr. 16, 1999	GPS.G1-X-00002-F	Updated for Downloader Version 1.3.1 and 1.3.2 New section on "Chamaeleon"
Mar. 30, 1999	GPS.G1-X-00002-E	Updated for Downloader Version 1.3.0
Feb. 15, 1999	GPS.G1-X-00002-D	Added GPS-E1 HW Rev 12/98
Dec, 1998	GPS.G1-X-00002-C	Dialog for Clock Offset
Sept, 1998	GPS.G1-X-00002-B	Dialog Box and Error Messages.
July, 1998	GPS.G1-X-00002-A	Initial Version