

PA3655NL

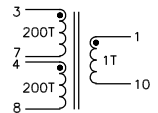
NOTICE: THE INFORMATION AND DESIGN CONTAINED HEREIN IS THE PROPERTY OF PULSE WHO RESERVES ALL RIGHTS THEREON.

TEST NOTES:

UNLESS OTHERWISE SPECIFIED, TESTING IS PERFORMED AT 25°C ±5°C.

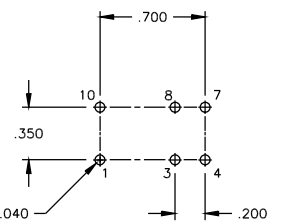
1. POLARITY PER SCHEMATIC: (100%)
2. T/R: 10 KHz, 100mV(100%)  
 PINS (3-7) / PINS (1-10) = 200±10%  
 PINS (4-8) / PINS (1-10) = 200±10%
3. OCL: AT 15 KHZ, .5 VRMS (100%)  
 PINS (3-7) = PINS (4-8) = 76 mH MINIMUM
4. DCR: MAXIMUM (SAMPLE)  
 PINS (3-7)=(4-8)= 15.80 OHMS MAXIMUM  
 PINS (1-10)= 1.70 mOHMS MAXIMUM
5. HIPOT: 60 Hz RMS (100%)  
 PINS (1-10) TO ALL OTHER PINS: 3000 VRMS, 60 SECONDS  
 (HI-POT TEST CAN BE DOWN AT 3300 VRMS FOR 6 SEC IN PRODUCTION).

MARK PART WITH "UL MARK"  
 AND "TUV" MARK  
 PER PROCEDURE ITEM 11.  
 MARK POSITION IS OPTIONAL,  
 PREFERRED LOCATION IS TOP  
 OF THE PART, IF IMPRACTICAL  
 USE SIDE FACING PIN NO. 1.

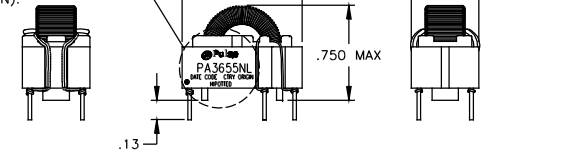


SCHEMATIC

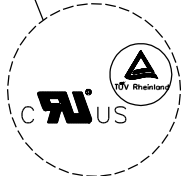
DCR TEST LEVEL



SUGGESTED PCB HOLE PATTERN



FINAL OUTLINE



UNLESS OTHERWISE SPECIFIED, ALL DIMENSIONS ARE IN INCHES		SIZE	SCALE CODE	DRG. NO.	REV
DECIMALS	ANGLES	B	01961	PA3655NL	10
.XX ±.01	± 1°	SCALE	NONE	PA3655NL-3	SHEET 3 OF 3
.XXX ±.005		SCALE	NONE	PA3655NL-3	SHEET 3 OF 3
DO NOT SCALE DRAWING					