


INDEX ANGLE	14		12		10		8		6		4		2		0		TERM. SW. FUNCTION
	T	B	T	B	T	B	T	B	T	B	T	B	T	B	T	B	
5.5																	2
7.5																	4
9.5																	6
11.5																	8
13.5																	10
15.5																	12
17.5																	14
19.5																	16
21.5																	18
23.5																	20
25.5																	22
27.5																	24
29.5																	26
31.5																	28
33.5																	30
35.5																	32
37.5																	34
39.5																	36
41.5																	38
43.5																	40
45.5																	42
47.5																	44
49.5																	46
51.5																	48
53.5																	50
55.5																	52
57.5																	54
59.5																	56

120 SECONDS PER STEP

MACHINE FUNCTION		
FILL - AGITATE	WASH HI	SUPER WASH
1/2 TUB DRAIN	DRAIN HI	
AGITATE HI	FILL & WASH	REGULAR HEAVY
AGITATE LO		
DRY AGITATE LO		
	DRAIN HI	REGULAR HEAVY
	SPIN HI	
FILL - AGITATE	RINSE HI	
	DRAIN HI	
SPRAY	SPIN HI	REGULAR HEAVY
OFF		
AGITATE HI	FILL & WASH	
AGITATE LO		
1/2 TUB DRAIN HI	COOL DOWN	
FILL AGIT LO		
	DRAIN HI	PERMANENT PRESS
	SPIN LO	
FILL AGITATE	RINSE HI	
	DRAIN HI	
SPRAY	SPIN LO	PERMANENT PRESS
OFF		
AGITATE LO	FILL & WASH	
	DRAIN HI	
	SPIN LO	
FILL - AGITATE	RINSE LO	KNITS / GENTLE
	DRAIN HI	
SPRAY	SPIN LO	
OFF		SOAK
AGITATE HI	FILL & WASH	
SOAK	FILL & WASH	
AGITATE HI	FILL & WASH	PRE WASH
	DRAIN HI	
	SPIN HI	
OFF		PRE WASH

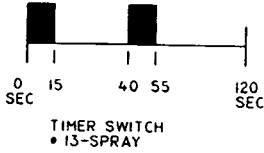
INDICATES MOTOR "OFF" FOR 5 SECS.

12/93









WARNING
 Disconnect from electric supply before servicing.
 Replace all panels before operating.

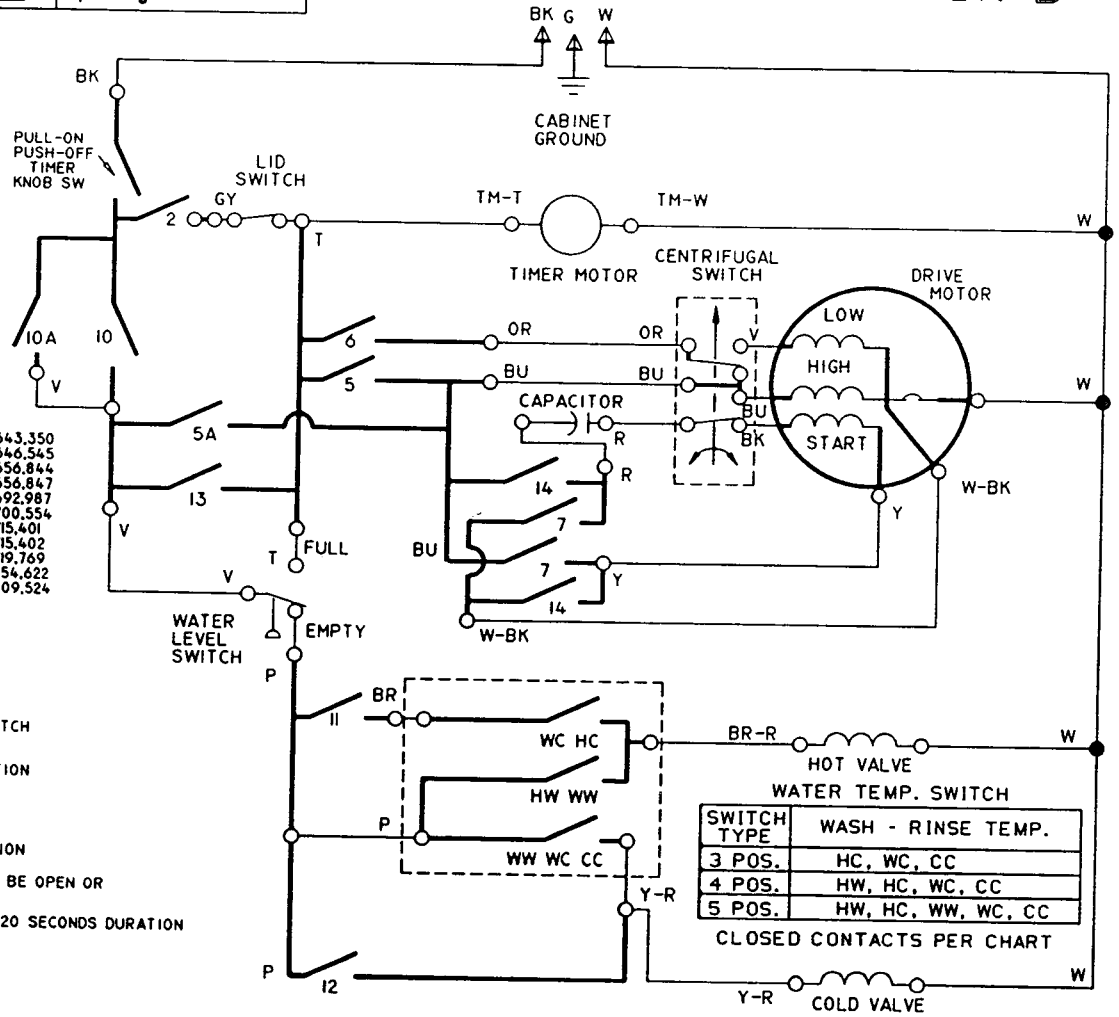
PART NO.
 3358743
 REV. B



MANUFACTURED UNDER ONE OR MORE OF THE FOLLOWING UNITED STATES PATENTS:

DES. 268,183	4,254,641	4,387,580	4,643,350
3,681,947	4,262,870	4,430,871	4,646,545
3,696,970	4,268,098	4,491,210	4,656,844
3,856,036	4,288,671	4,495,960	4,656,847
3,863,467	4,291,556	4,533,126	4,692,987
3,880,188	4,306,841	4,545,947	4,700,554
3,884,493	4,324,035	4,555,919	4,715,401
4,003,613	4,357,813	4,566,295	4,715,402
4,163,457	4,366,902	4,572,596	4,719,769
4,174,622	4,430,871	4,618,193	4,754,622
4,254,640	4,432,528	4,624,117	4,809,524

- LEGEND**
-  — TIMER SWITCH
 -  — SUB-INTERVAL SWITCH
 -  — INT. COMP CONNECTION
 -  — HARNESS WIRING
 -  — TERMINAL CONNECTION
 -  — X TIMER SWITCH MAY BE OPEN OR CLOSED
- TIMER STEPS ARE 120 SECONDS DURATION



SWITCH TYPE	WASH - RINSE TEMP.
3 POS.	HC, WC, CC
4 POS.	HW, HC, WC, CC
5 POS.	HW, HC, WW, WC, CC

CLOSED CONTACTS PER CHART