

## **LCD2**



### **About...**

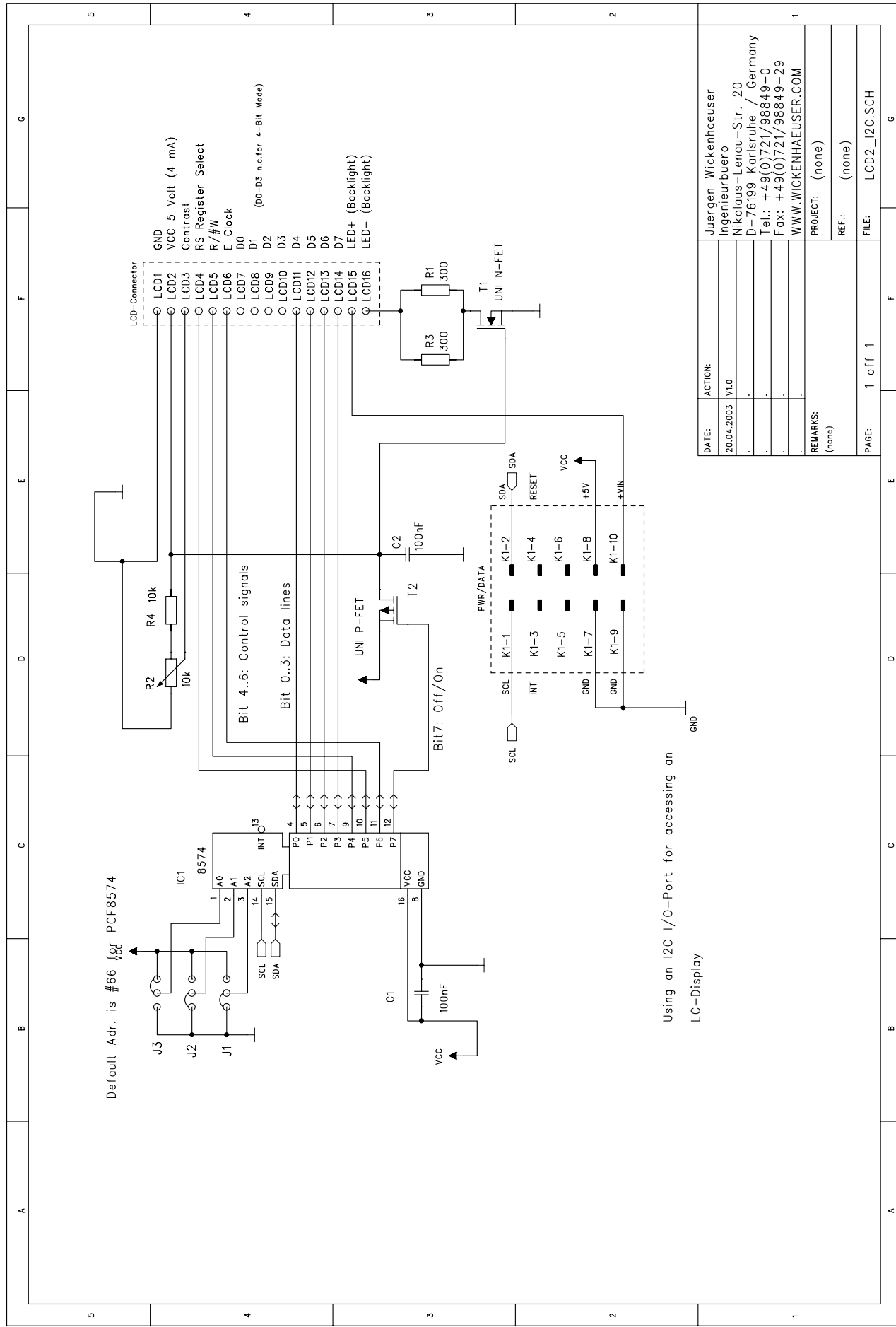
The LCD2 is a universal LC-Display driver. Low-Level drivers are included for Direct-4-Bit access, as well as accessing a Display by I2C-Bus. For this a small interface board has been designed.

The driver supports all sizes up to 4x20 characters.

This board is offered by as as well as by ELEKTOR magazine.

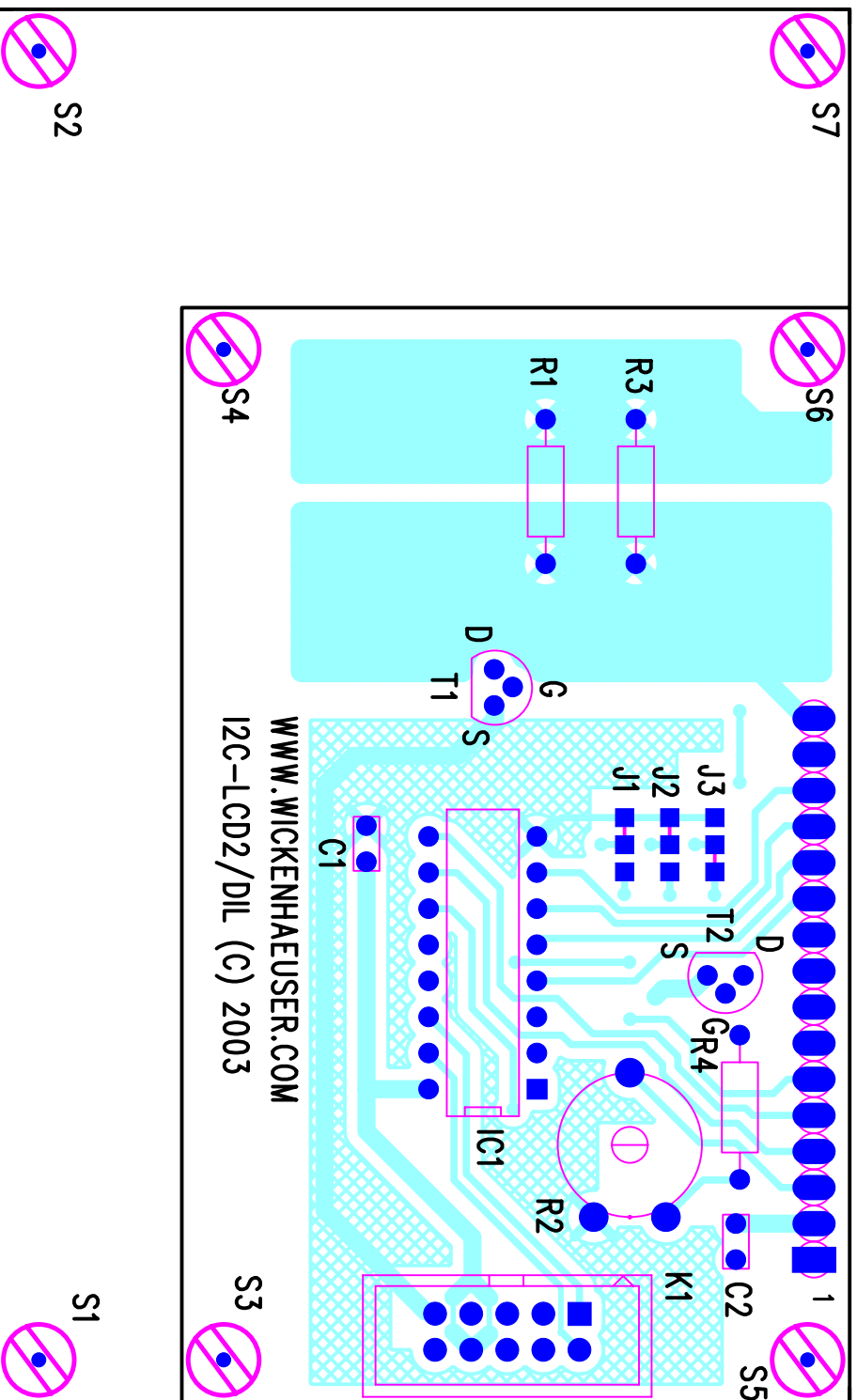
Enclosed you will find circuits for the I2C.

The drivers supply oversized numeric fonts!

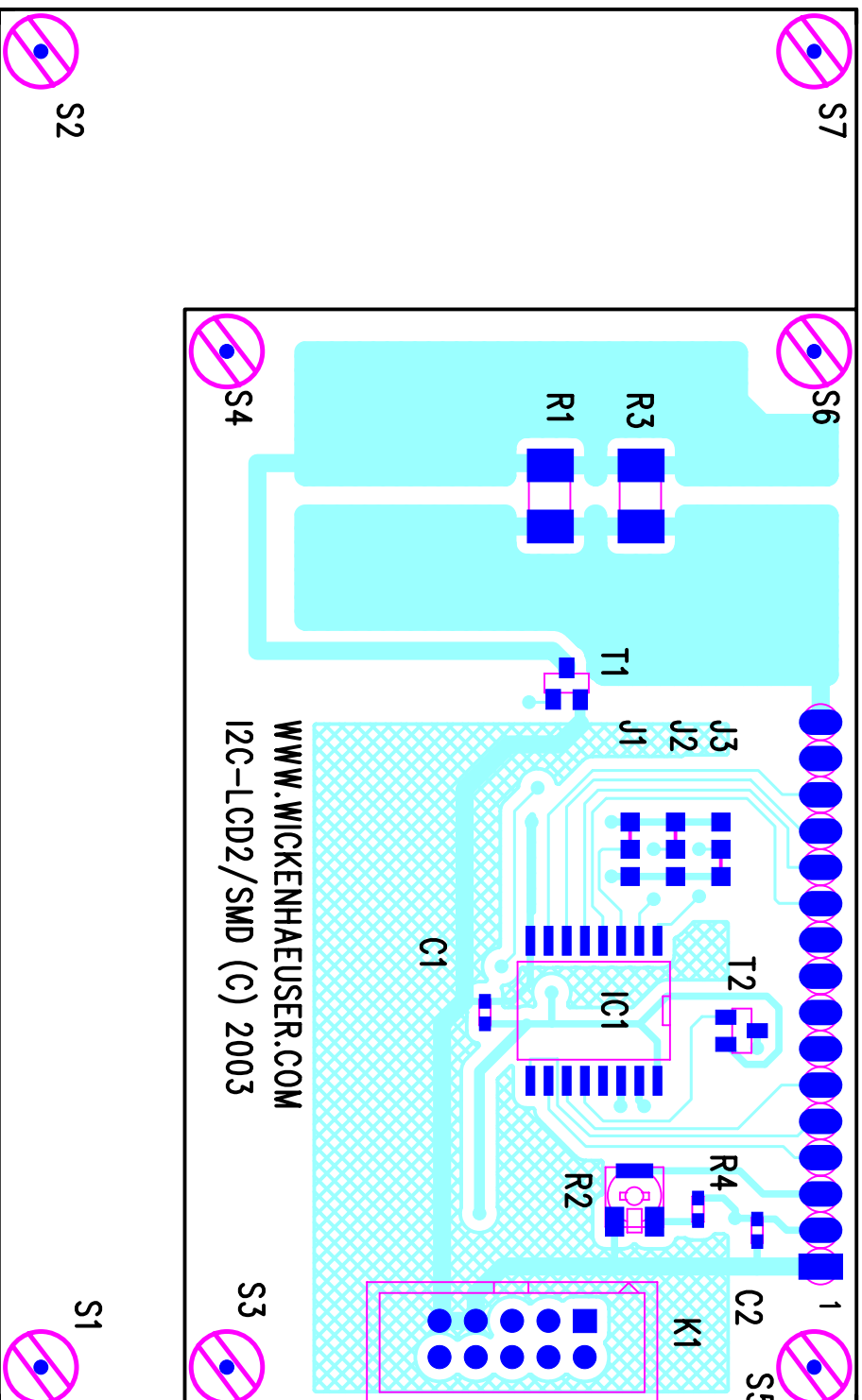


|            |         |                             |
|------------|---------|-----------------------------|
| DATE:      | ACTION: | Juergen Wickenhaeuser       |
| 20.04.2003 | V1.0    | Ingenieurbuero              |
| .          | .       | Nikolaus-Lenau-Str. 20      |
| .          | .       | D-76199 Karlsruhe / Germany |
| .          | .       | Tel.: +49(0)721/98849-0     |
| .          | .       | Fax: +49(0)721/98849-29     |
| .          | .       | WWW.WICKENHAEUSER.COM       |
| REMARKS:   |         |                             |
| (none)     |         | PROJECT: (none)             |
|            |         | REF.: (none)                |
| PAGE:      | 1 off 1 | FILE: LCD2_12C.SCH          |

LCD16  
LCD15  
LCD14  
LCD13  
LCD12  
LCD11  
LCD10  
LCD9  
LCD8  
LCD7  
LCD6  
LCD5  
LCD4  
LCD3  
LCD2  
LCD1



LCD16  
LCD15  
LCD14  
LCD13  
LCD12  
LCD11  
LCD10  
LCD9  
LCD8  
LCD7  
LCD6  
LCD5  
LCD4  
LCD3  
LCD2  
LCD1



# Partlist for LCD2/DIL

| Part  | Qty. | Descr.                       |
|-------|------|------------------------------|
| IC1   | 1    | PCF8574 I2C-8-Bit I/O        |
| T1    | 1    | FET UNI NKANAL, low RDs TO92 |
| T2    | 1    | FET_UNI_PKANAL TO92          |
| C1-2  | 2    | 100nF/RM 2.5                 |
| R1 R3 | 2    | Resistor 1W 300              |
| R2    | 1    | 10k/POTI                     |
| R4    | 1    | 10k                          |
| K1    | 1    | MODU10 Connector 2x5 Pins    |

# Partlist for LCD2/SMD

| Part  | Qty. | Descr.                                |
|-------|------|---------------------------------------|
| IC1   | 1    | PCF8574/SO16 I2C-8-Bit I/O            |
| T1    | 1    | FET UNI NKANAL, low Rds<5 Ohm! SOT23  |
| T2    | 1    | FET_UNI_PKANAL (i.e. BSS84) SOT23     |
| C1-2  | 2    | 100nF/0603                            |
| R1 R3 | 2    | Power Resistor 1W 300/2512            |
| R2    | 1    | 10k/POTI_SMD_MINI (like MEGGIT 3142W) |
| R4    | 1    | 10k/0603                              |
| K1    | 1    | MODU10 Connector 2x5 Pins             |