

Simple 12V Lead Acid Battery Charger

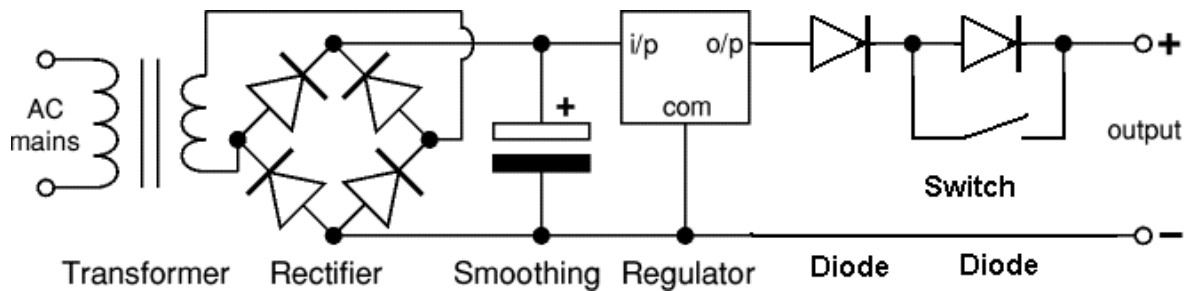


Figure 1

For 1A: Transformer 15V/1,5A, Rectifier B40C1500, Capacitor 2,200uF/25V, Regulator 7815 (needs cooling), Si-Diode 3A/30V, Switch 2A/12V.

For 2A: Transformer 15V/3A, Rectifier B40C5000/3300, Capacitor 4,700uF/25V, Regulator 78S15 (needs cooling), Si-Diode 5A/30V, Switch 4A/12V.

Switch closed: fast charge / Switch open: hold charge