

Keywords: IrDA, wireless, ENDEC, IR port, optical data link, rs232, RS-232 to IrDA, SIR, optical communication

Aug 01, 2001

APPLICATION NOTE 631

Circuit Enables PCs to Communicate via IrDA

This application note describes a simple circuit allowing a PC to communicate via an IrDA-specified optical data port. The circuit employs only two integrated circuits (ICs), an external infrared LED, and an external avalanche photodiode to interface between a PC's RS-232 serial port and the optical link. Standard baud rates from 600 baud to 230.4k baud may be selected or programmed by SPI signals. The circuit is a complete IrDA physical layer.

A specification defined by the Infrared Data Association (IrDA) in 1993 allows devices from different manufacturers to communicate without wires. IR ports are now available in various laptops, keyboards, PDAs, and calculators, but not in most desktop PCs. The two-IC circuit in **Figure 1** permits a PC to communicate with other IR-port devices.

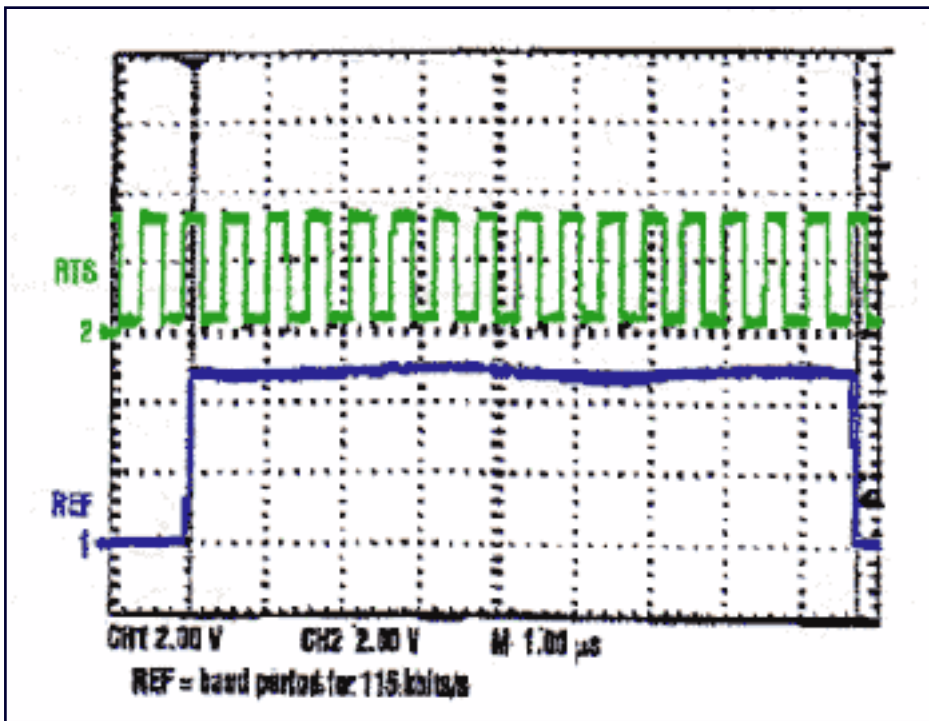


Figure 2. IC2 of Figure 1 generates this baudx16 clock (top trace) in response to a 115kbps baud rate.

Using the SPI interface, you configure IC2's baudx16 test mode with two 16-bit digital words (**Figure 3**), in which bits B3-B30 are set according to a baud-rate selection table (see below). The two words set the baud rate for the baudx16 clock. They can be loaded with a programmable lab-data generator such as the Tektronix DG2020(A) or a low-cost microcontroller like the PIC16F84. The SPI port is used for this operation only once.

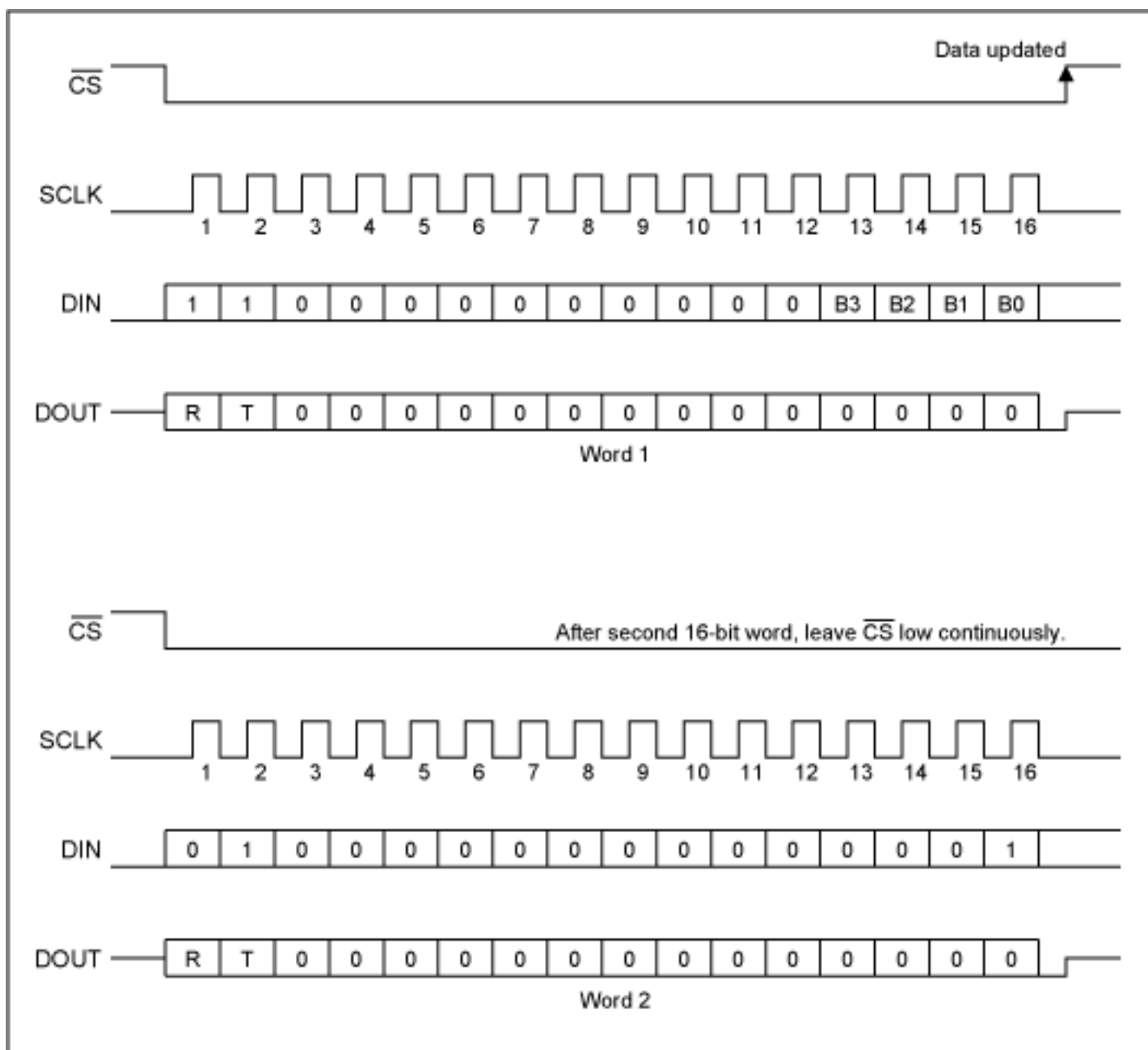


Figure 3. These 16-bit words configure IC2 (Figure 1) in its baudx16 test mode.

Baud-Rate Selector Table

| Baud | | | | Division Ratio | Baud Rate ($f_{osc} = 1.8432\text{MHz}$) | Baud Rate ($f_{osc} = 3.6864\text{MHz}$) |
|------|----|----|----|----------------|---|---|
| B3 | B2 | B1 | B0 | | | |
| 0 | 0 | 0 | 0* | 1 | 115.2k* | 230.4k* |
| 0 | 0 | 0 | 1 | 2 | 57.6k | 115.2k |
| 0 | 0 | 1 | 0 | 4 | 28.8k | 57.6k |
| 0 | 0 | 1 | 1 | 8 | 14.4k | 28.8k |
| 0 | 1 | 0 | 0 | 16 | 7200 | 14.4k |
| 0 | 1 | 0 | 1 | 32 | 3600 | 7200 |
| 0 | 1 | 1 | 0 | 64 | 1800 | 3600 |
| 0 | 1 | 1 | 1 | 128 | 900 | 1800 |

| | | | | | | |
|---|---|---|---|-----|--------------|--------------|
| 1 | 0 | 0 | 0 | 3 | 38.4k | 76.8k |
| 1 | 0 | 0 | 1 | 6 | 19.2k | 38.4k |
| 1 | 0 | 1 | 0 | 12 | 9600 | 19.2k |
| 1 | 0 | 1 | 1 | 24 | 4800 | 9600 |
| 1 | 1 | 0 | 0 | 48 | 2400 | 4800 |
| 1 | 1 | 0 | 1 | 96 | 1200 | 2400 |
| 1 | 1 | 1 | 0 | 192 | 600 | 1200 |
| 1 | 1 | 1 | 1 | 384 | 300 | 600 |

Notes:
Standard baud rates shown in bold
*Default baud rate

Figure 4 shows the conversion of standard NRZ logic signals (coming from IC1's TTL-compatible R1OUT terminal) to IrDA RZ logic signals at 115kbps. IC2 provides the baudx16 clock.

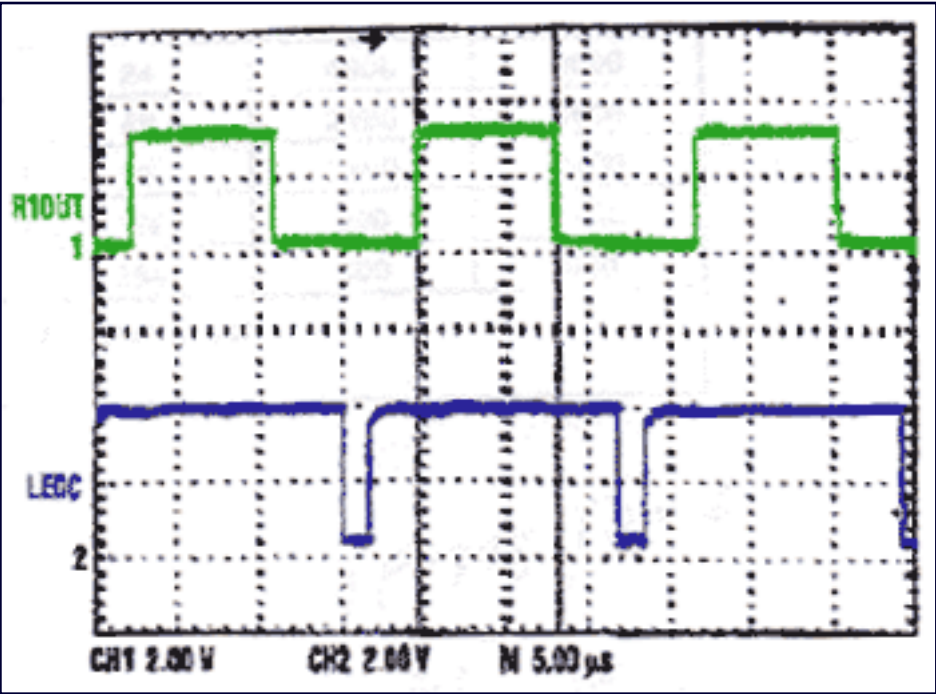


Figure 4. These waveforms show the Figure 1 circuit converting NRZ logic signals (top trace) to IrDA logic signals at 115kbps.

In an IrDA application, the three major layers required are the physical, protocol, and application layers. The circuit in Figure 1 completes the physical layer for IrDA serial infrared (SIR). Documentation for the protocol and application layers can be downloaded from the [IrDA website](http://www.irda.org). The protocol layer consists of the serial infrared link access protocol (IrLAP V.1.1) and the infrared link management protocol (IrLMP V.1.1). The application layer, which enables a standard serial port to support IrDA, is IrCOMM V.1.0.

A similar version of this article appeared in the February 21, 2000 issue of *Electronic Design* magazine.

For technical questions and support: <http://www.maxim-ic.com/support>

For samples: <http://www.maxim-ic.com/samples>

Other questions and comments: <http://www.maxim-ic.com/contact>

Related Parts

MAX3131: [QuickView](#) -- [Full \(PDF\) Data Sheet](#) -- [Free Samples](#)

AN631, AN 631, APP631, Appnote631, Appnote 631

Copyright © 2005 by Maxim Integrated Products

Additional legal notices: <http://www.maxim-ic.com/legal>