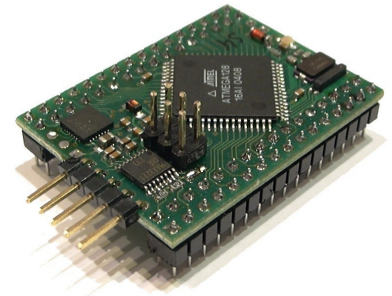


Crumb128 V2.0

Rapid Prototyping Module with ATmega128 µController.

Crumb128 is a low-cost, easy to use and small-formfactor module combining Atmels ATmega128 AVR microcontroller with a standard serial port with RS232 transceiver, USB2.0 (full speed) device interface, reset protection circuitry, reset jumper, status LED, standard 6-pin InSystemProgramming (ISP) header and all ATmega128 signals on two 32pin headers.



Please Note – Previous Crumb128 modules have been shipped with a preprogrammed CP2102 chip and bootloader - however, since most customers prefer a native USB chip and microcontroller current Crumb128 modules are not preprogrammed. Please use the native CP210x USB driver for current modules! The bootloader is still available on the download page.

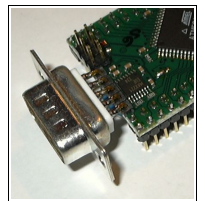
Connector Kit – Crumb128 is being shipped without pin headers mounted, since everybody has it's own favorites (pins male/female facing up/down or 90° angled, etc.). A set of high quality pin headers and receptacles are available as a Crumb128 Connector Kit (see picture).

Power Supply – Crumb128 requires a regulated +5V DC power supply. See pinout diagram for VCC pins (both VCC pins are internally connected). The AVCC pin is connected to VCC through coil L1 and decoupled by capacitor C5, hence it should not be connected externally.

System Reset – Reset circuitry C11, R7 and D3 provides a proper reset signal after power up and provide protection against irradiation. By closing jumper J1 a manual reset can be triggered.

System Clock – The CPU clock is generated by a 14.7456MHz crystal (X1) for error free common serial baudrates. An additional 32.768kHz asynchronous timer crystal can be used for a software realtime clock.

Serial Port – RS232 level signals are provided by the onboard MAX3221 (U2) RS232 transceiver, connected to UART0 of the ATmega128. U2 can be enabled/disabled by jumper J2, which should be set to 1-2 (disabled) or 2-3 (enabled) position before operation. The RS232 signals are available at CON4, which can be connected 1:1 to a male Sub-D-9 connector (see picture).



USB Port – The USB interface of Crumb128 is based on Silicon Laboratories CP2102 USB-UART converter, which translates converts the USB data flow into a serial UART format. The CP2102 data sheet, as well as royalty-free drivers for Windows, MacOSX and Linux are available on <http://www.chip45.com>. Please install the USB driver prior to connecting the module to the PC.

Furthermore the CP2102 offers an integrated EEPROM for storing USB parameters like VID, PID, product string and serial number, hence providing the possibility to individualize a product based on Crumb128, by customizing these parameters. Silabs offers a free Windows tool, as well as another tool for generating a customized Windows USB driver. By providing such a driver to your customers, your product will be recognized immediately when connected to a PC and will be registered in Windows control panel with it's unique product name. Later your product will be assigned the same COM port number each time it is connected to the PC, which simplifies access to your product from PC applications.

The tools and the corresponding application notes (AN144 and AN220) by Silabs are also available on <http://www.chip45.com>.

Status LED – LED1 is hardwired to pin 17 (OC2 OC1C PB7) of the ATmega128 and can be used by the application as a general purpose status indicator. The bootloader flashes the LED three times after power up.

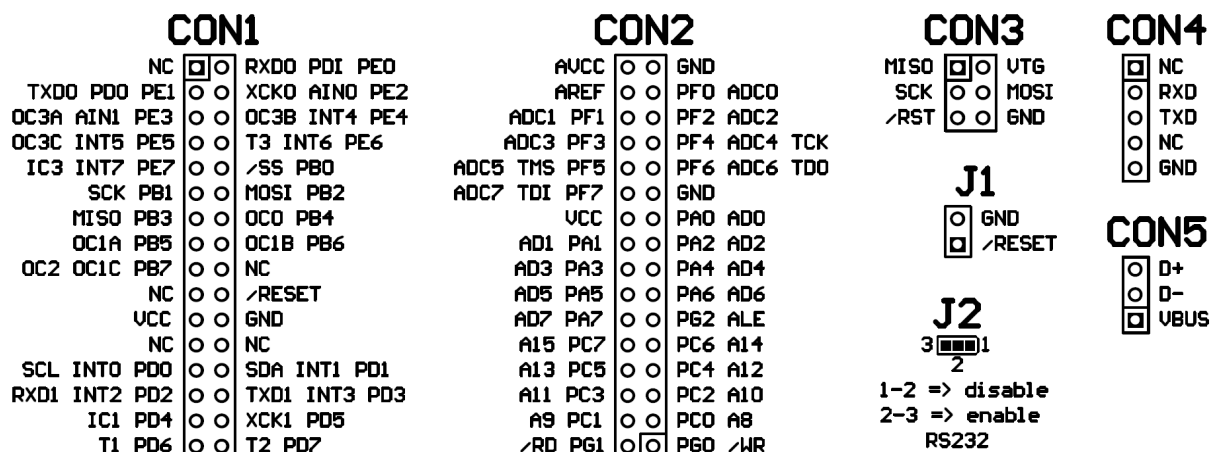
In-System Programming (ISP) – CON3 is the standard 6-pin Atmel AVR ISP connector and can be used with most ISP adapters (e.g. stk200/300 compatible adapters like Crisp-LPT by chip45.com or Atmel's stk500) and software (e.g. uisp, avrdude, PonyProg, etc.). Keep in mind, that the ATmega128 shares the ISP signals PDI/PDO with UART0, hence serial communication might be blocked as long as the ISP adapter is connected.

Memories – The ATmega128 provides 128kbytes of onchip, non-volatile Flash memory for program code storage, 4kbytes of onchip application SRAM and additional 4kbytes of onchip non-volatile EEPROM memory.

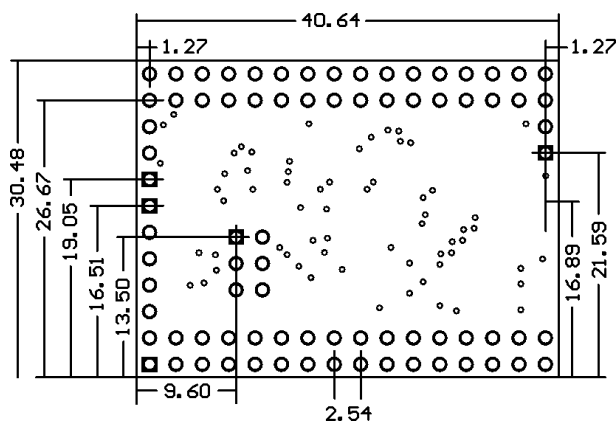
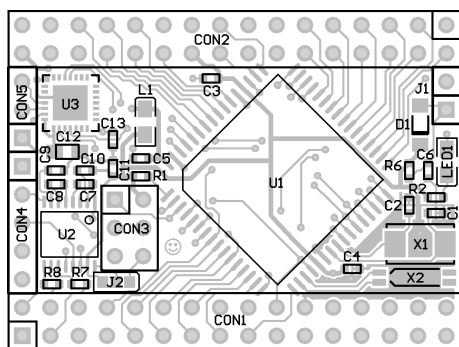
If your application requires more memory, CrumbMEM provides 64kbytes of external SRAM memory. CrumbMEM is designed as a pincompatible expansion module and can be stacked underneath Crumb128, hence providing a very space saving solution.

Fuse Bits – The ATmega128 fuse bits are not preset to any specific values. If you want to use the 14.7456MHz clock crystal instead of the internal oscillator (which is default) set CKSEL[0..3] fuse bits to 0xF.

Connectors - All connectors have standard 2.54mm spacing. CON1/2 provide all ATmega128 signals, CON3 is the ISP header, CON4 and CON5 provide the RS232 and USB interface signals.



Board Layout and Dimensions – Crumb128 is a ~40x30mm² double-sided FR4 PCB (1.6mm). Header holes have 0.9mm diameter, hence most standard round or rectangular pin headers can be mounted. See pictures for details.



Development Tools – Crumb128 is based on the ATmega128 AVR microcontroller, which can be programmed either in assembler (e.g. the original AVR Studio by Atmel: <http://www.atmel.com/avr>) or with several high level languages, including C/C++, Pascal or Basic. There exist several commercial C/C++ compiler suites (e.g. IAR Embedded Workbench or CodeVisionAVR) as well as the WinAVR GNU C/C++ compiler and tools suite (see <http://winavr.sourceforge.net> for details, the bootloader of Crumb128 was developed with WinAVR). A suitable and reasonably priced Basic compiler is BASCOM-AVR by <http://www.mcselec.com>. For a good Pascal environment please go to <http://www.e-lab.de>.

Further Information – Application notes and data sheets of the onboard components as well as the schematics can be downloaded at <http://www.chip45.com>. The official Atmel AVR homepage is <http://www.atmel.com/avr>. A valuable source of information dedicated to AVR microcontrollers is <http://www.avrfreaks.net>.

Disclaimer – Erik Lins makes no warranty for the use of its products and assumes no responsibility for any errors which may appear in this document nor does it make a commitment to update the information contained herein. Erik Lins products are not intended for use in medical, life saving or life sustaining applications. Erik Lins retains the right to make changes to these specifications at any time, without notice. All product names referenced herein are trademarks of their respective companies. chip45.com is a registered trademark of Erik Lins.