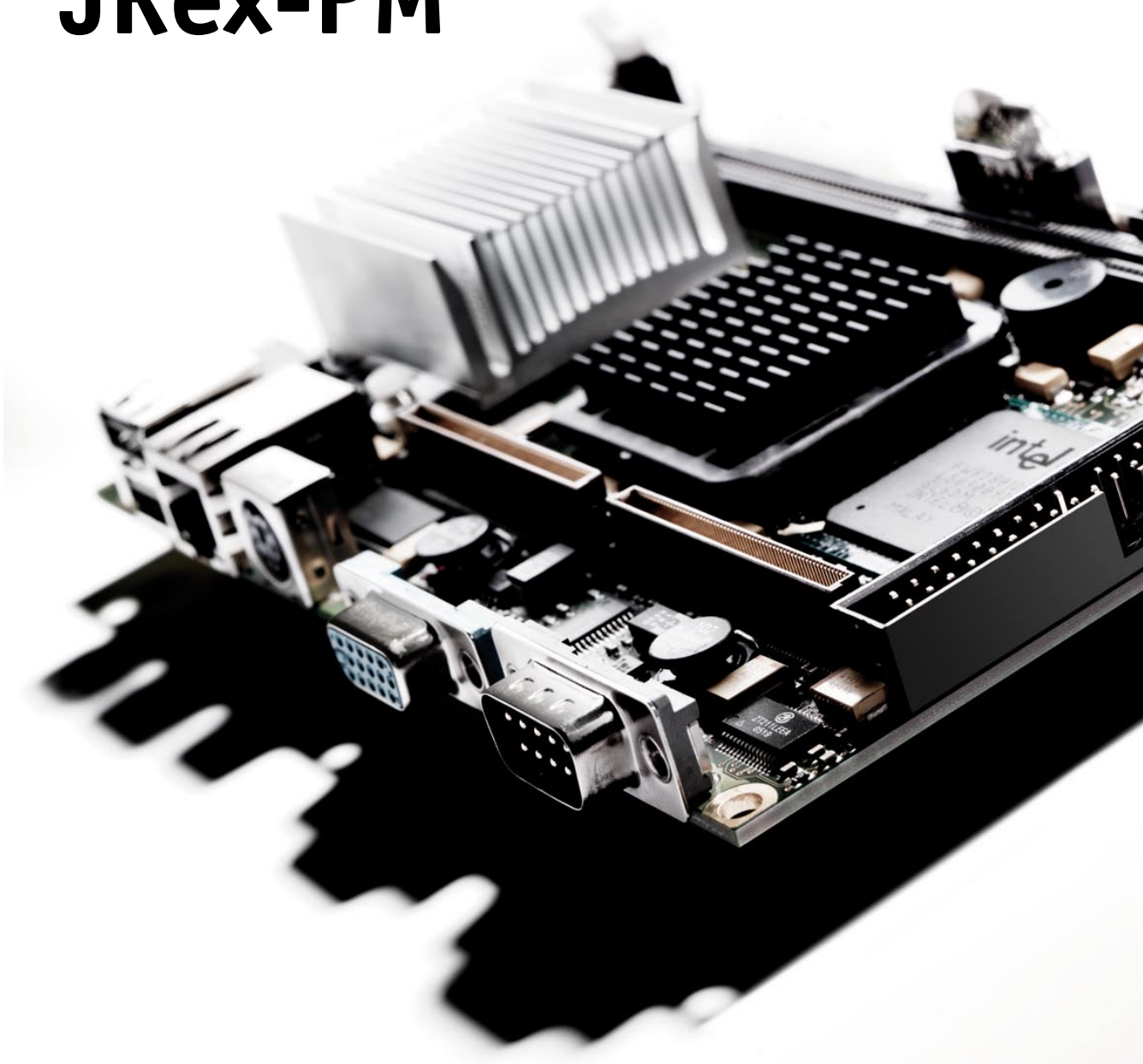




JRex-PM



powered by
Intel® Pentium® M



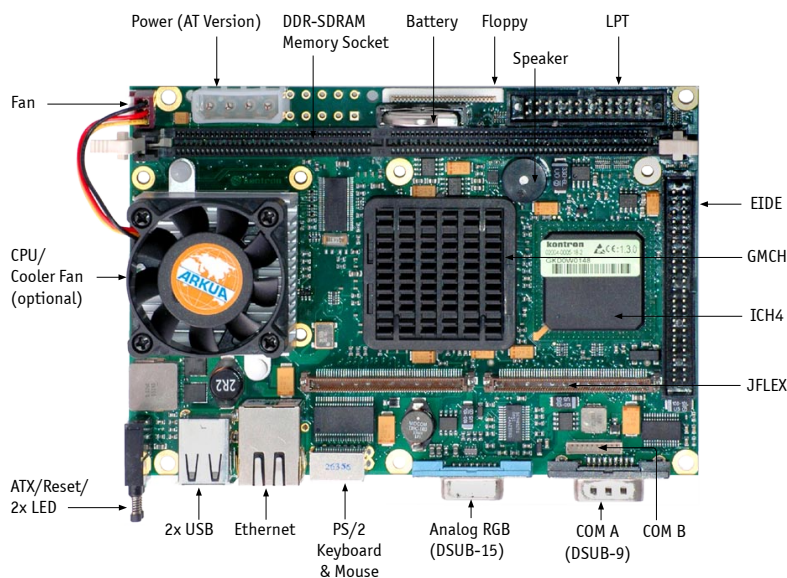
3.5" embedded line

- ▶ Intel® Pentium® M up to 1.8 GHz, 852GM/855GME chipset
- ▶ New - Price breaking version with Intel® processor 600 MHz
- ▶ Fastest embedded performance @ low power consumption

► Product Overview

Each **JRex** is a member of the 3.5" board family. JRex modules are characterized by the same pinout and interface for 2x USB 2.0, FAST LAN, Keyboard/Mouse-socket, Compact-Flash™, VGA and COM1. This family feature allows to reuse chassis and maximizes design re-use. This **JRex-PM** hosts an Intel® Pentium® M or Celeron® M processor. A DDR-RAM-DIMM socket for up to 1 GByte allows the use of standard desktop memory and full ATX power supply is as well a standard feature.

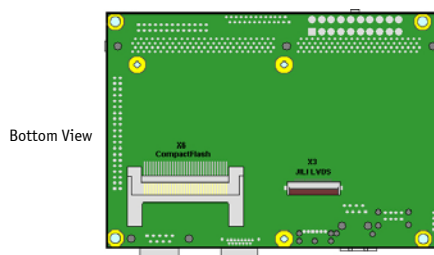
These homogeneous features facilitate easy upgrades within the JRex product family. The graphic controller is included in the chipset, that performs with up to 2x 32 MByte UMA. Connection of displays is simplified when using these units which are complete with a JILI-Interface (JUMPtec® Intelligent LVDS Interface). JILI automatically recognizes which display is connected and independently sets all video parameters. All JRex are plug-and-work enabled to further reduce time-to-market.



► Technical Information

Processor	Intel® processor from 600 MHz up to 1.8 GHz
Chipset	Intel® 852GM/855 GME, ICH4
Chipset features	400 MHz FSB, up to 1 GByte DDR 266/200 integrated USB 2.0, integrated CRT/LCD
Memory	1x SO-DIMM-SDRAM Socket up to 1GByte
Graphic	Intel® Extreme Graphics 2, up to 32 MByte UMA VRAM, DVO, LVDS, CRT, Image Rotation, Dual Independent Display
I/O Features	1 x EIDE Harddisk Interfac, UDMA-100 1 x Compact Flash Socket Type 1 1 x CRT (Analog RGB, DSUB-15) 2 x JFlex™ Extension 1 x Floppy Disk Interface 1 x LPT (Parallel Port) 1 x RS 232 (DSUB-9), 1 x TTL, (pin header) PS/2 Mouse & Keyboard 2 x USB 2.0
Ethernet	10/100 BaseT Ethernet
Form Factor	102 x 147 mm, 3.5" Single Board Computer
Common Features	LAN/USB Boot, DarkBoot, Watchdog, HW Monitor, Real Time Clock, Reset/ATX Feature button
Power Supply	ATX or 5V power supply
Temperature (*)	Operation: 0° to 60° C (with appropriate airflow) Storage: -10° to 85° C
More Features	Plug'n Play compatible to any other JRex and therefore exchangeable

(*) Ask about extended temperature ranges



► Ordering Information

Article	Part.-No.	Description
JRex-PM	02004-0005-06-4	Intel® Celeron® M (BANIAS) ULV CPU with 600 MHz and 512 KB Cache
JRex-PM	02004-0000-08-2	Intel® Processor 800MHz 0KB L2 cache, FANLESS, ATX
JRex-PM	02004-0005-08-2	Intel® Processor 800MHz 0KB L2 cache, FANLESS, 5V
JRex-PM	02004-0000-18-2	Intel® Pentium® M processor 745 with 1.8GHz, 2MB L2, fan, ATX
JRex-PM	02004-0005-18-2	Intel® Pentium® M processor 745 with 1.8GHz, 2MB L2, fan, 5V
KAB-SBC-SET1	96002-0000-00-1	Cable set for any SBC: PS/2 keyboard, IDE, one serial port, PS/2 mouse, 10/100 LAN, USB

► Corporate Offices

Europe, Middle East & Africa
Oskar-von-Miller-Str. 1
85386 Eching/Munich
Germany
Tel.: +49 (0)8165/ 77 777
Fax: +49 (0)8165/ 77 219
sales@kontron.com

North America
14118 Stowe Drive
Poway, CA 92064-7147
USA
Tel.: +1 888 294 4558
Fax: +1 858 677 0898
sales@us.kontron.com

Asia Pacific
17 Building,Block #1,ABP.
188 Southern West 4th Ring Road
Beijing 100070,P.R.China
Tel.: + 86 10 63751188
Fax: + 86 10 83682438
kcnc@kontron.cn

Kontron Embedded Modules GmbH
Flatpanel Solutions
Marschnerstieg 7
22081 Hamburg - Germany
Tel.: +49(40)200090-0
Fax: +49(40)200090-10
sales-graphic@kontron.com

ReadJRex-PM 22092008P0L Copyright © 2007 Kontron Embedded Modules GmbH
 All data is for information purposes only and not guaranteed for legal purposes. Subject to change without notice. Information in this datasheet has been carefully checked and is believed to be accurate; however, no responsibility is assumed for inaccuracies.
 All rights reserved. IBM, PC, PS/2, EPC, Ethernet and Keyboard are trademarks or registered trademarks of Kontron Embedded Modules GmbH. Kontron is trademark or registered trademark of Kontron AG.
 All other brand or product names are trademarks or registered trademarks or copyright by their respective owners and are recognized.