

Scope

This document describes how to test USB Device CDC example.

Preparation

Host

Personal computer running Windows Xp or Windows 7.

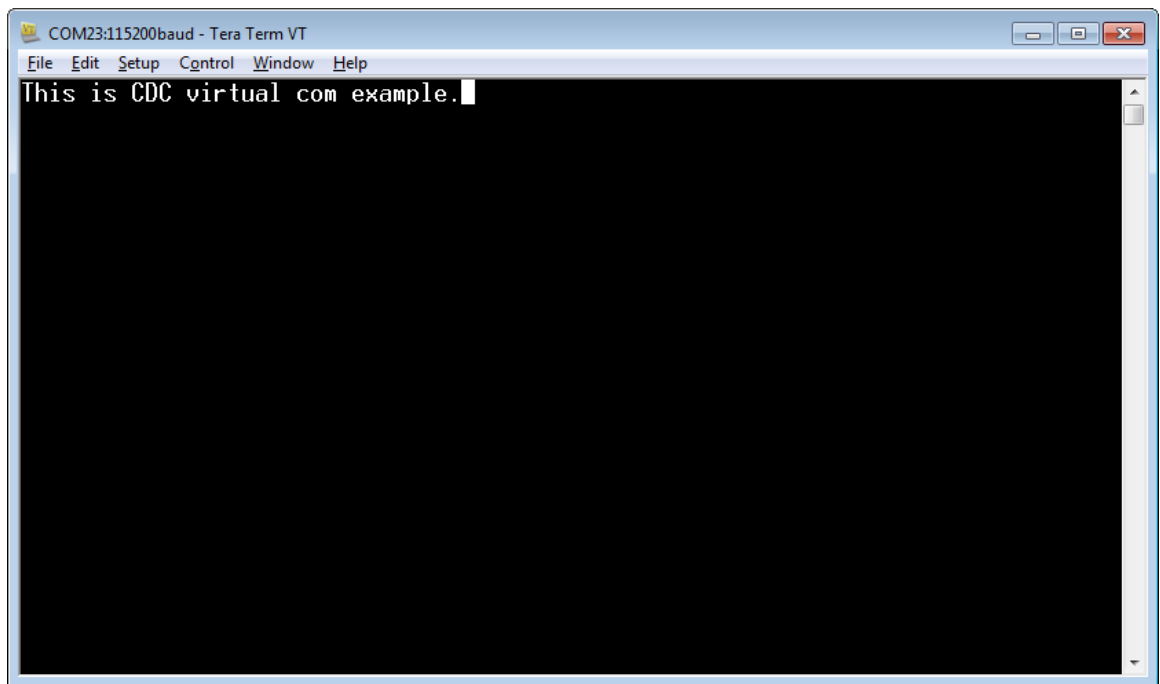
Device

A board, i.e. twrk70f120m, which is running dev_cdc_virtual_com example.

Steps

Follow the steps to run the CDC Virtual Com demo.

1. Plug-in the CDC device which is running dev_cdc_virtual_com example into PC. You will see a COM port enumerated in Device Manager. If it prompts for CDC driver installation. Refer to the next section to see how to install CDC driver.
2. Open the COM port in a terminal tool, i.e. Tera Term.
3. Type some characters and you can see them echoed back from the COM port.

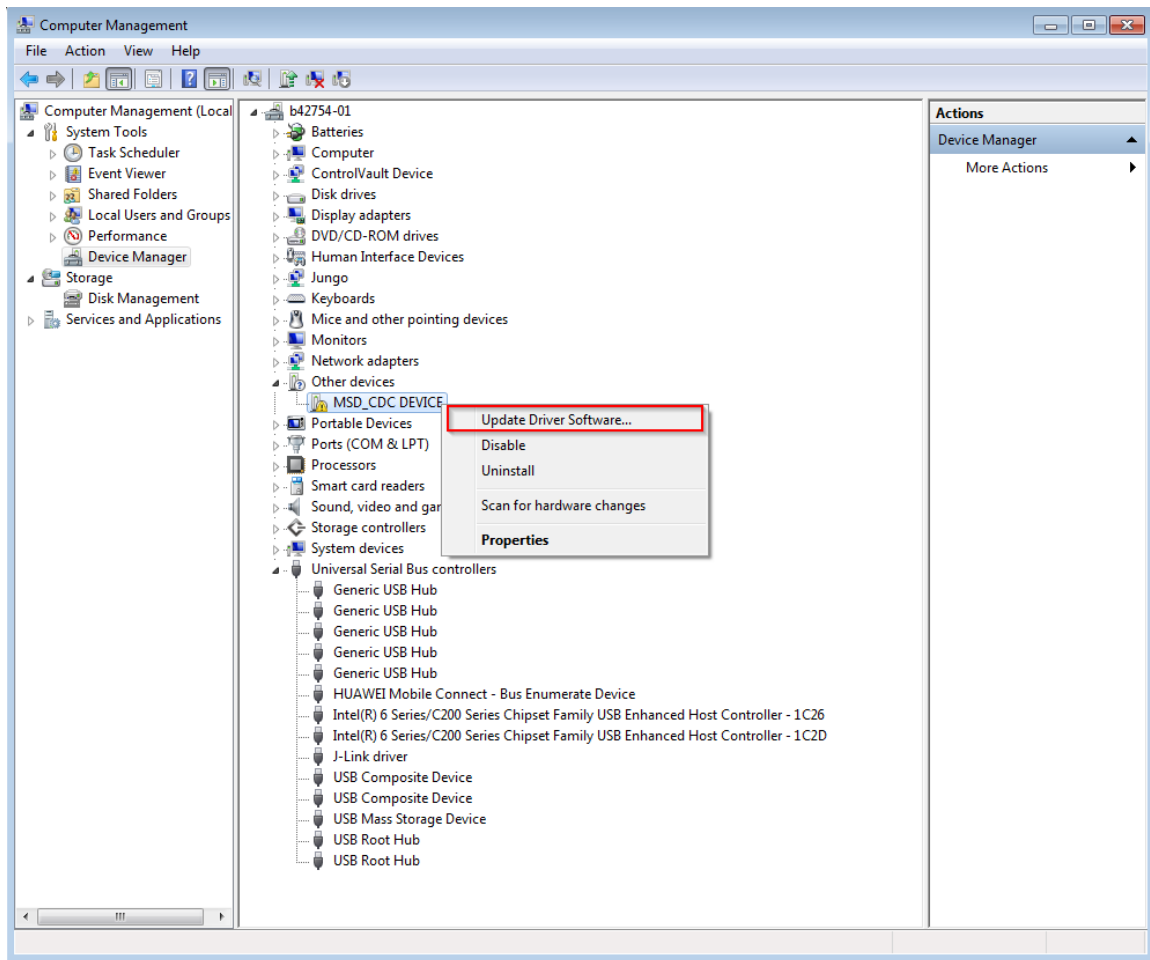


Note: Since there is no dynamic detection between host and device, the COM port must be closed from the terminal tool prior to plug-out the CDC device. Or the CDC device won't get recognized next time you plug-in with the COM port still opened.

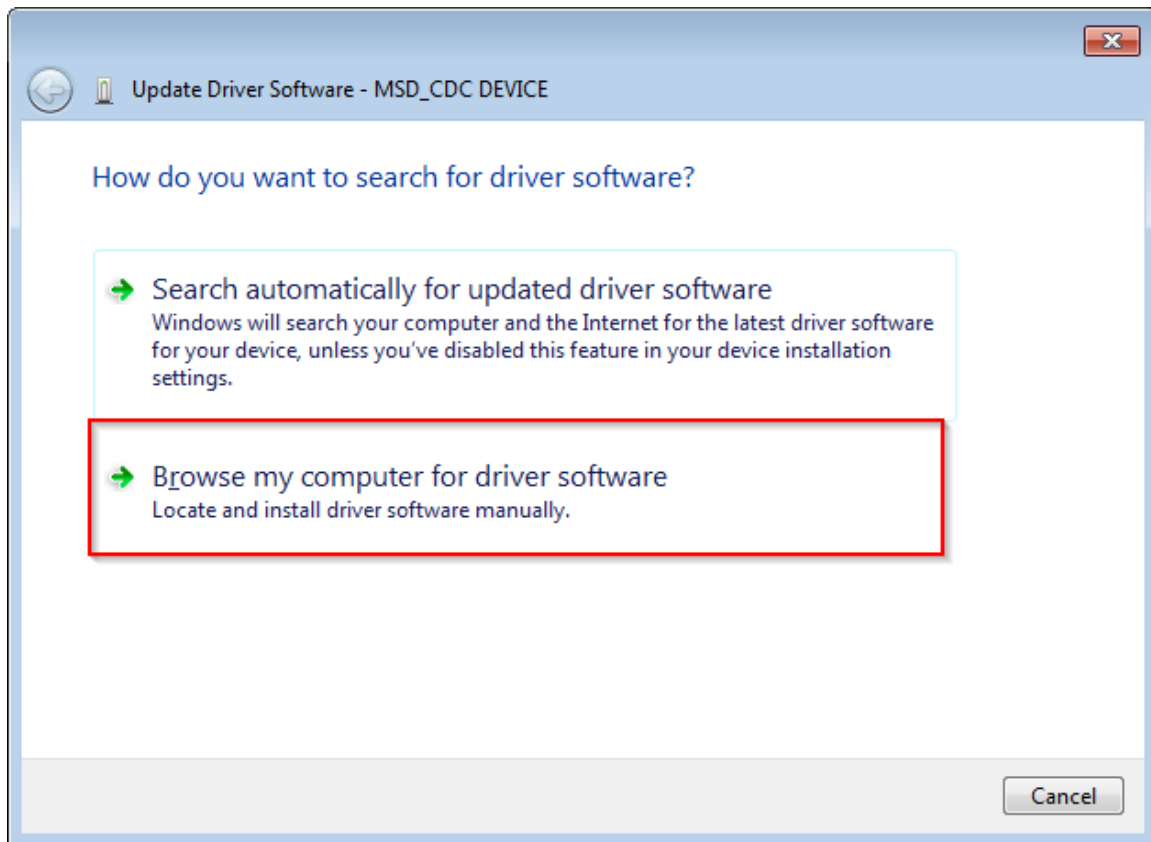
How to install CDC driver for virtual_com and msd_cdc composite example

Below are the steps to install CDC driver on Windows 7, while on Windows XP the similar way apply.

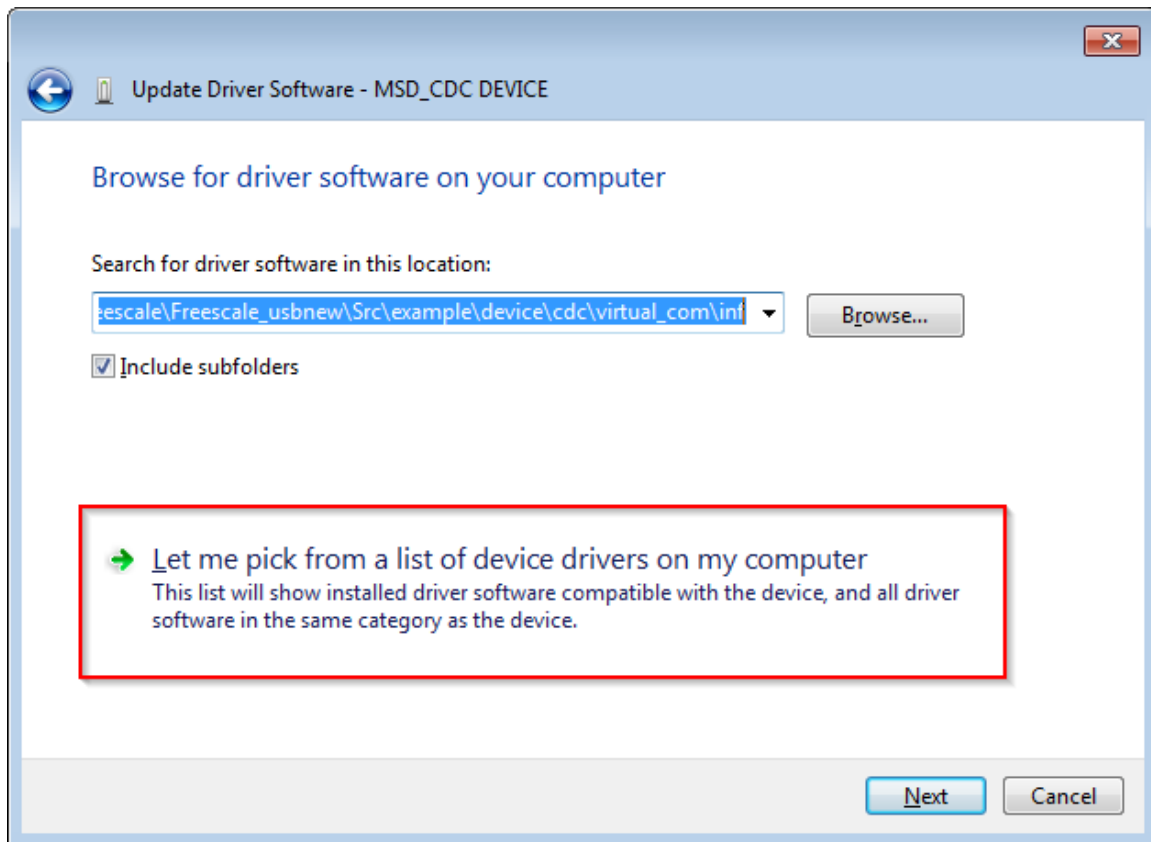
Step 1. Click “Update Driver Software...”



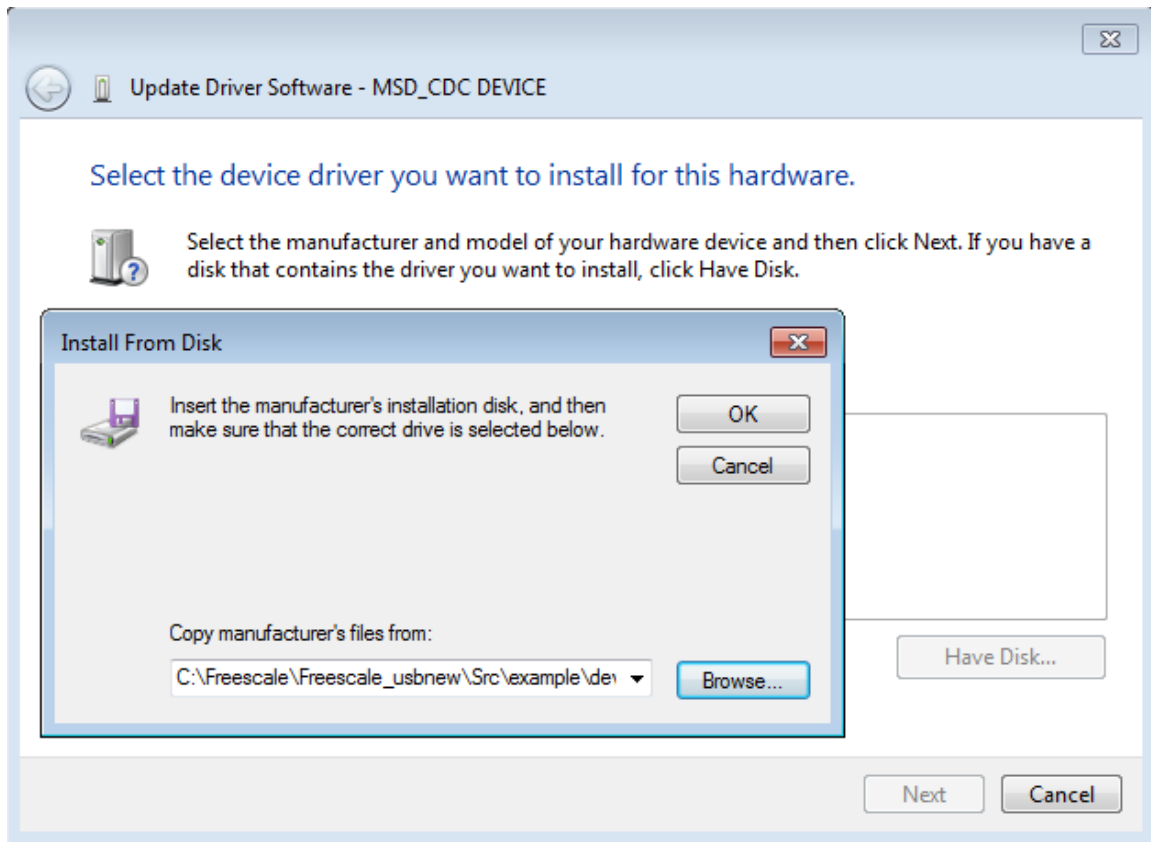
Step 2. Choose “Browse...”



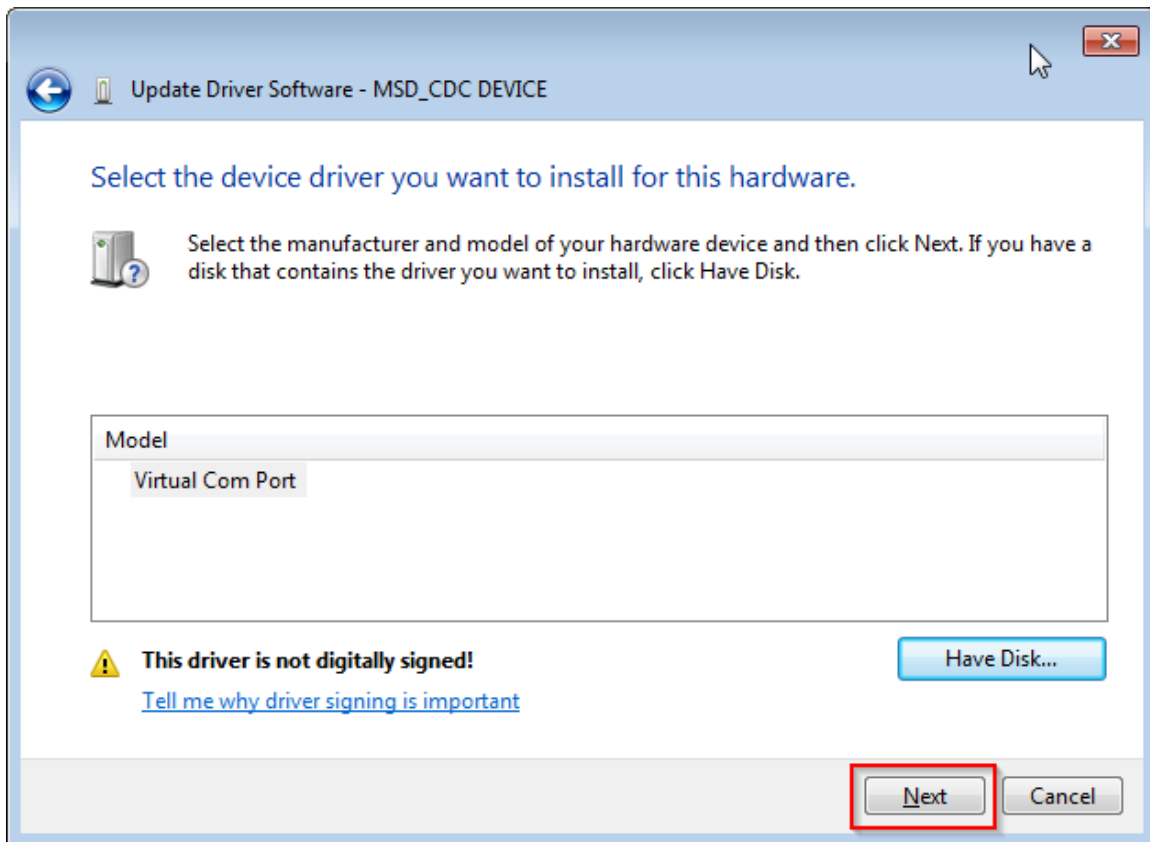
Step 3. Select “Let me pick...”



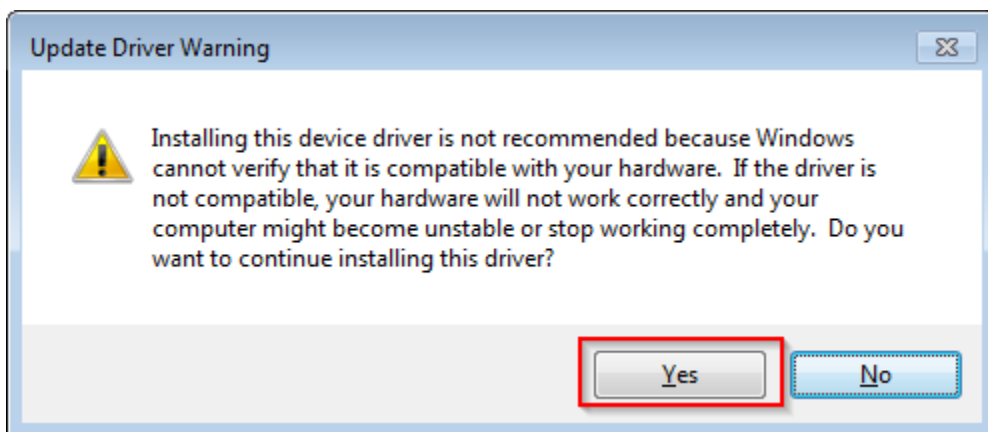
Step 4. Navigate to your CDC driver location.



Step 5. Press “Next”.



Step 6. Ignore the warning and press “Yes”.



Step 7. Now the CDC driver should have been installed successfully.

