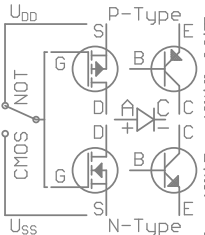


SMD Size (mm)	Pmax
0201 (0603)	0.05
0402 (1005)	0.06
0603 (1608)	0.1
0805 (2012)	0.13
1206 (3216)	0.25
1210 (3225)	0.5
1812 (4532)	0.75
2010 (5025)	0.75
2512 (6332)	1W

mm	mil
0.10	4
0.15	6
0.20	8
0.30	12
0.5	20
1.0	39
1.5	59
2.0	79
2.5	98



Font size
0.8
1.0
1.2
1.4
1.6
1.8
15%

Font size
0.8
1.0
1.2
1.4
1.6
1.8
15%

Max I	IPC-2221A	035	μm		
mm ²	mm	1K	5K	10K	mΩ
0.002	0.1	0.12	0.24	0.33	78.7
0.004	0.15	0.18	0.37	0.50	44.4
0.006	0.2	0.24	0.48	0.65	31.0
0.009	0.3	0.33	0.67	0.91	19.3
0.013	0.4	0.42	0.85	1.15	14.0
0.016	0.5	0.50	1.01	1.37	11.0
0.020	0.6	0.57	1.17	1.58	9.05
0.027	0.8	0.72	1.45	1.97	6.69
0.034	1.0	0.85	1.72	2.33	5.30
0.051	1.5	1.15	2.33	3.15	3.49
0.069	2.0	1.42	2.88	3.90	2.60

Alu	Electrolytic	Caps		
Pan ø	a,b	h	W	Umax
B	4.0	4.3	5.8	* j/0j 6.3
C	5.0	5.3	5.8	* (1)A 10
D	6.3	6.6	5.8	* (1)C 16
D8	6.3	6.6	7.7	* (1)E 25
E	8.0	8.3	6.2	* (1)V 35
F	8.0	8.3	10.2	# (1)H 50
G	10.0	10.3	10.2	# (1)J 63
H13	12.5	13.5	13.5	# (1)K 80
J16	16.0	17.0	16.5	+ 2A 100
K16	18.0	19.0	16.5	+ 2V 350
W:	*0.65	#0.9	+1.2	2W 450

Spacing	FR4	PCB
Isol. Group: A	B	
U~	U-	C1 Cr C1 Cr
12	15	0.2 0.2 0.4 0.8
30	36	0.2 0.3 0.5 1.0
60	75	0.3 0.4 0.7 1.3
125	150	0.4 0.5 1.0 2.0
250	300	0.8 1.0 1.6 3.0
400	475	1.3 1.6 2.5 4.2

VIA TH	VIA I
ø/mm Rth	ø/mm I/A
0.3	210
0.35	180
0.4	160
0.5	130
0.7	95
1.0	65
>1	65/ø

AWG	ø	mm ²
36	0.13	0.01
34	0.16	0.02
32	0.20	0.03
30	0.26	0.05
28	0.32	0.08
26	0.41	0.13
24	0.51	0.21
22	0.64	0.33
20	0.81	0.52
18	1.02	0.82
16	1.29	1.31
14	1.63	2.08

Owner: <https://github.com/maugsburger/ucruler>



Font size
0.8
1.0
1.2
1.4
1.6
1.8
15%

Font size
0.8
1.0
1.2
1.4
1.6
1.8
15%

Alu	Electrolytic	Caps		
Pan ø	a,b	h	W	Umax
B	4.0	4.3	5.8	* j/0j 6.3
C	5.0	5.3	5.8	* (1)A 10
D	6.3	6.6	5.8	* (1)C 16
D8	6.3	6.6	7.7	* (1)E 25
E	8.0	8.3	6.2	* (1)V 35
F	8.0	8.3	10.2	# (1)H 50
G	10.0	10.3	10.2	# (1)J 63
H13	12.5	13.5	13.5	# (1)K 80
J16	16.0	17.0	16.5	+ 2A 100
K16	18.0	19.0	16.5	+ 2V 350
W:	*0.65	#0.9	+1.2	2W 450



Metric Threading
hole ø/mm fine/coarse
M1.6 M2 M2.5 M3 M4 M5
1.7 2.2 2.7 3.2 4.3 5.3
2.2 2.6 3.1 3.6 4.8 5.8

