

Technical Data

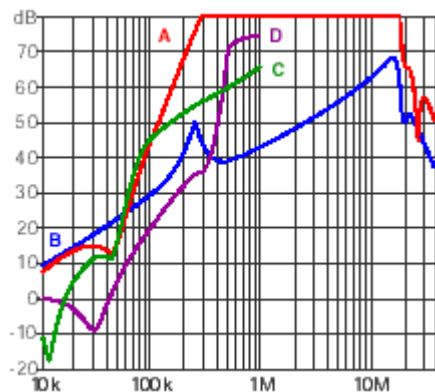
SCHAFFNER

Multistage high-performance single-phase filter

FN 2080-10/06

Insertion loss

per CISPR 17
A=50ohm/50ohm sym B=50ohm/50ohm asym
C=0.1ohm/100ohm sym D=0.1ohm/100ohm asym



Current rating
A at 40°C (25°C)

10 (11.5)

Sample FasTrack

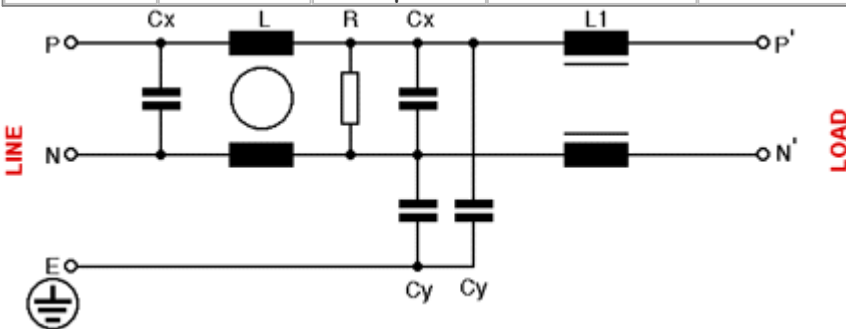
for **FN 2080-10/06** samples

[For part numbering and
ordering information, [click
here](#)]

[NB: Specifications subject to change
without notice. This electronic document
has been carefully checked. However,
Schaffner does not assume any liability for
errors or inaccuracies]

Simplified electrical schematic

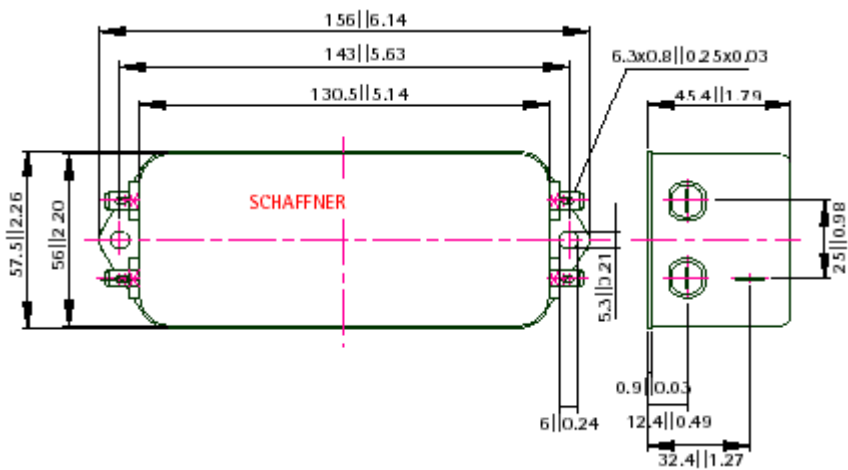
Inductance L	Inductance L1	Capacitance Cx	Capacitance Cy	Resistance R
4.5 mH	0.06 mH	1 μ F	4.7 nF	0.22 ohms



Mechanical information

Dimensions: millimetres || inches [25.4mm=1 inch]

Click [here](#) for information
on Schaffner's I/O connections



© Schaffner 1998. All trade marks and trade names recognised.
Please email any comments to [Wordsun](mailto:Wordsun@schaffner.com) who maintain this site.