

**Doc Version**

**2.0**



# **EM-402**

**GPS RECEIVER ENGINE BOARD**

GLOBALSAT TECHNOLOGY CORPORATION

# GPS Engine Board Specifications

---

REVISIONS

V2.0    12-13-2005    Update document format (USG)

©2005 **GlobalSat Technology Corporation (Taiwan)**  
16F, No. 186 Jian Yi Road, Chung Ho City, Taipei, 235, Taiwan.  
[www.globalsat.com.tw](http://www.globalsat.com.tw)

**USGlobalSat, Inc. (USA)**  
1308 John Reed Court, City of Industry, CA 91745  
<http://www.usglobalsat.com>

---

# Table of Contents

EM-402 GPS BOARD OVERVIEW .....	1
FEATURES .....	1
SPECIFICATIONS .....	2
PIN ASSIGNMENT .....	3
PIN DESCRIPTIONS .....	3
DIMENSIONS .....	4
MOUNTING.....	5
NMEA & SiRF COMMAND LINKS .....	5



## EM-402 GPS BOARD OVERVIEW

The EM-402 GPS engine board is low cost but maintains high reliability and accuracy making it an ideal choice for integration with OEM/ODM systems.

### **FEATURES:**

1. SiRF e/LP "X-Trac" high performance, low power consumption chipset
2. Very high sensitivity (Tracking Sensitivity: -175dBm)
3. Extremely fast TTFF (Time To First Fix) at low signal levels
4. Supports the NMEA 0183 data protocol
5. Built-in SuperCap to maintain system data for rapid satellite acquisition
6. Tethered active antenna for placement into slim cavities
7. Foliage Lock for weak signal tracking
8. All-in-view 12-channel parallel processing
9. Snap Lock 100mc re-acquisition time
10. Enhanced algorithm for navigation stability
11. Superior urban canyon performance



## SPECIFICATIONS

### General - Receiver

Chipset: SiRF Star II X-Trac  
Frequency: L1, 1575.42 MHz  
C/A Code: 1.023 MHz chip rate  
Channels: 12 channel all-in-view tracking  
Sensitivity: -175dBm

### Accuracy

Position: 10 meters, 2D RMS  
10 meters, 2D RMS, WAAS enabled  
Velocity: 0.1 ms  
Time: 1 $\mu$ s synchronized to GPS time

### Datum

Default: WGS-84

### Acquisition Time

Reacquisition: 0.1 sec., average  
Hot Start: 8 sec., average  
Warm Start: 38 sec., average  
Cold Start: 48 sec., average

### Dynamic Conditions

Altitude: 18,000 meters (60,000 feet) max  
Velocity: 515 meters/second (1000 knots) max  
Acceleration: Less than 4g  
Jerk: 20m/sec \*\*3

### Power

Main Power Input: 3.3V~5.5V DC Input  
Power Consumption: 80mA  
Backup power: +2.5V to +3.6V  
Backup current: 10uA typical

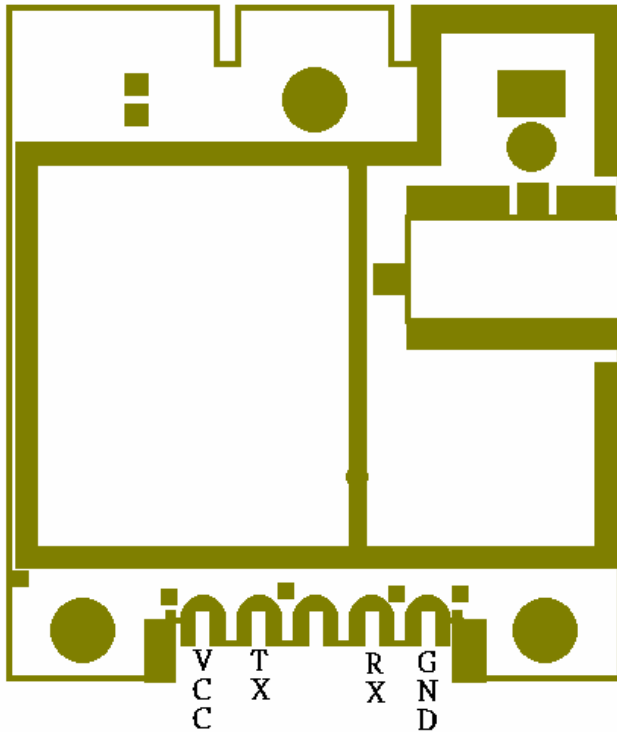
### Protocol

Electrical Level: TTL level,  
Output Voltage Level: 0V~2.85V  
Baud Rate: 4800 bps  
Output Message: NMEA 0183 GGA, GSA, GSV,  
RMC (VTG, GLL optional)

### Physical Characteristics

Dimensions: 1.181" x 1.102" x 0.196"  
(30mm x 28mm x 5mm)  
Operating Temperature: -40F to +176F  
(-40C to +80C)  
Humidity: Up to 95% non-condensing

## PIN ASSIGNMENT



## PIN DESCRIPTIONS

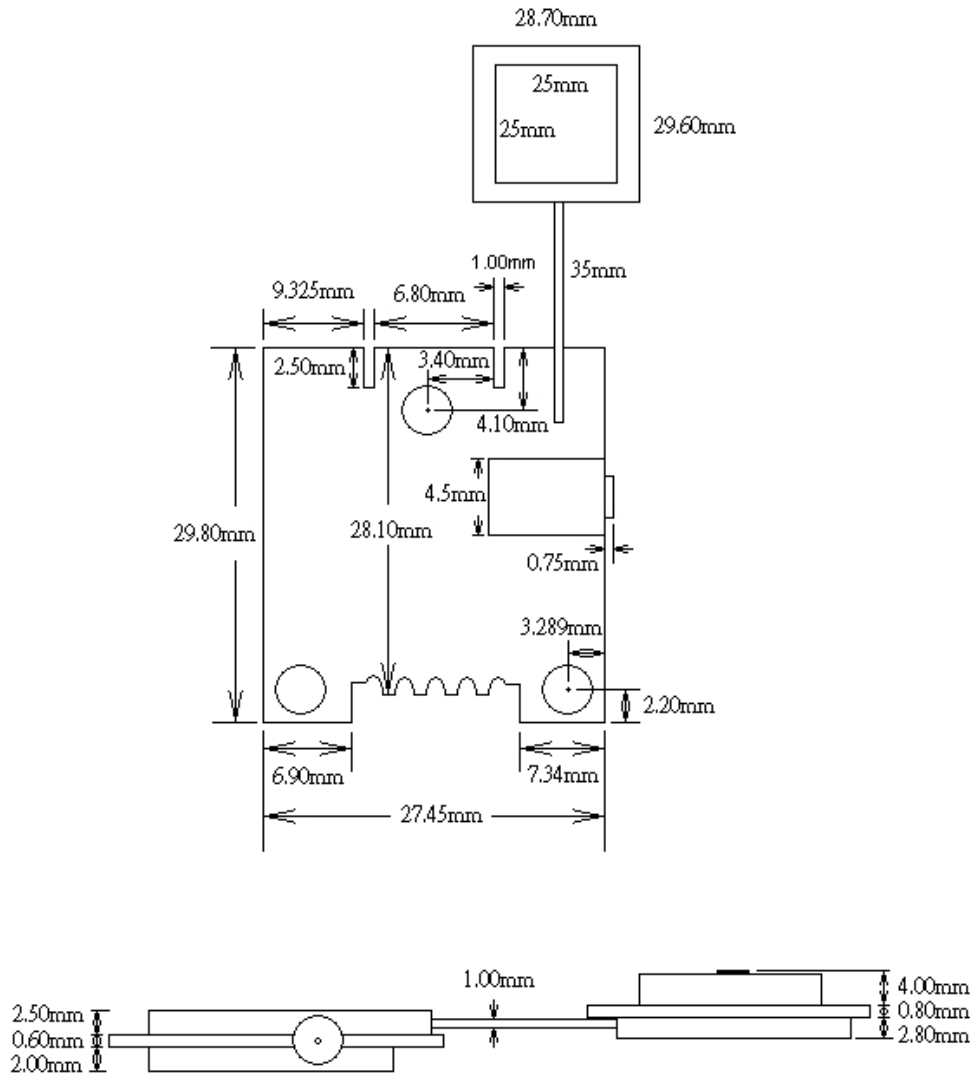
**VCC: (DC power input):** This is the main DC supply for a 3.3V ~ 5.5V power module board.

**TX:** This is the main transmit channel for outputting navigation and measurement data to user's navigation software or user-written software.

**RX:** This is the main receive channel for receiving software commands to the engine board from SiRfdemo software or from user-written software. Normally this pin must be kept High and if you don't use this pin please connect a resistor to 3.5V to pull it high.

**GND:** GND provides the ground for the engine boards. Be sure to connect all grounds

# DIMENSIONS



## MOUNTING

Recommended mounting methods:

- a. Use industrial grade double-sided foam tape. Place it on the bottom side of the engine board.
- b. A recessed cavity in your housing design with a foam pad to eliminate shifting or movement.
- c. Use provided mounting holes on the GPS engine board PCB.

## NMEA & SiRF COMMAND LINKS

Please download the latest output and control commands from our web-site:

**[NMEA Command Reference Manual](http://www.usglobalsat.com/downloads/NMEA_commands.pdf)**

([http://www.usglobalsat.com/downloads/NMEA\\_commands.pdf](http://www.usglobalsat.com/downloads/NMEA_commands.pdf))

**[SiRF Binary Protocol Reference Manual](http://www.usglobalsat.com/downloads/SiRF_Binary_Protocol.pdf)**

([http://www.usglobalsat.com/downloads/SiRF\\_Binary\\_Protocol.pdf](http://www.usglobalsat.com/downloads/SiRF_Binary_Protocol.pdf))

*All product specifications contained in this document are subject to change without notice.*



Notes: