



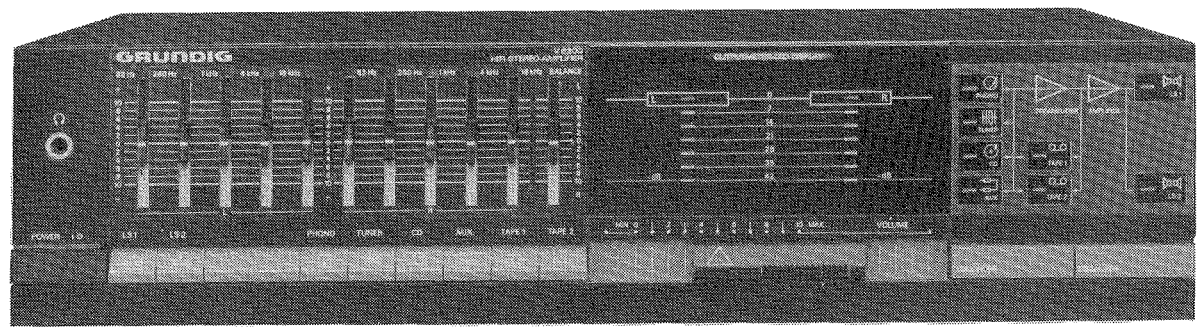
Ⓛ Btx * 32700 #

230P

N 96946

8/86

V 8200



Technische Daten

Technical Specification

Ausgangsleistungen (DIN 45 500) Musikleistung/Nennleistung an 8 Ω:	Output Power (DIN 45 500) Music Power/Nominal Power into 8 Ω:	2 x 75/50 W
Klirrfaktor (bei Nennleistung)	Total Harmonic Distortion (at nominal power)	≅ 0.01%
Intermodulation (bei Nennleistung)	Intermodulation Distortion (at nominal power)	≅ 0.3%
Dämpfungsfaktor (8 Ω) R _i = 160 mΩ	Damping Factor (8 Ω) R _i = 160 mΩ	≅ 50
Übertragungsbereich Phono: Tuner, Tape, CD, AUX	Frequency Response Phono (magn.): Tuner, Tape, CD, AUX	20 Hz... 40 kHz ≅ 3 dB 6 Hz... 40 kHz ≅ 3 dB
Übersprechdämpfung L-R (für 1 kHz) Phono: Tuner, Tape, CD, AUX	Stereo Separation (for 1 kHz) Phono: Tuner, Tape, CD, AUX	68 dB 63 dB
Signal-Fremdspannungsabstand: (Effektivwert/Spitzenwert nach DIN 45 405) a) bezogen auf Nennleistung Phono: Tuner, Tape, CD, AUX	Signal-to-Noise Ratio (Unweighted) (rms/peak value to DIN 45 405): a) at nominal power Phono: Tuner, Tape, CD, AUX	≅ 73/69 dB ≅ 92/88 dB
b) bezogen auf 2 x 50 mW an 8 Ω	b) for 2 x 50 mW into 8 Ω	≅ 67/63 dB
Eingangsempfindlichkeit (bei Nennleistung) Phono: Tuner, Tape, CD, AUX	Input Sensitivity (at nominal power) Phono: Tuner, Tape, CD, AUX	≅ 1.9 mV/47 kΩ ≅ 185 mV/≧ 200 kΩ
Max. Eingangsspannung (Übersteuerungsfestigkeit) Phono: Tuner, Tape, CD, AUX	Maximum Input Voltage (Input overload point) Phono: Tuner, Tape, CD, AUX	≅ 100 mV ≅ 10 V
Regelbereich der Klangsteller	Tone Control Range	± 12 dB
Loudness (-40 dB) 40 Hz/16 kHz	Loudness (-40 dB) 40 Hz/16 kHz	11,5/1,7 dB

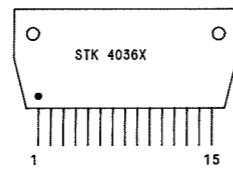
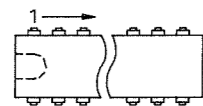
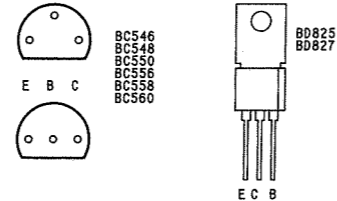
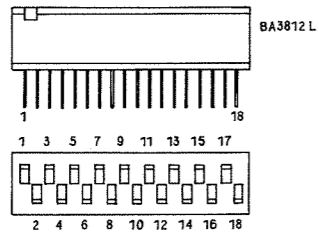
WIDERSTAND/RESISTOR
RESISTANCE/RESISTENZA

- KSW 0204 DIN
- MSH 0204 DIN
- KSW 0207 DIN
- MSH 0207 DIN
- KSW 0309 DIN
- KSW 0411 DIN
- KSW 0617 DIN
- MSH 0309 DIN
- NTC
- DRAHT
WIRE
BOBINEE
A FILO
- METALLOXYDSCHICHT
METAL OXIDE
A OXIDE METALLIQUE
AD OSSIDO METALLICO
- RAUSCHARM
LOW NOISE
A SOUFFLE REDUIT
A BASSO RUMORE
- SCHWER ENTFLAMMBAR
LOW FLAMMABILITY
PEU INFLAMMABLE
A BASSA INFLAMMABILITA
- SICHERUNGSWIDERSTAND
SAFETY RESISTOR
FUSIBLE
DI SICUREZZA

KONDENSATOR/CAPACITOR
CONDENSATEUR/CONDENSATORE

- ELKO
ELECTROLYTIC
ELECTROLYTIQUE
ELETTROLITICO
- TANTAL ELKO
TANTALUM ELECTROLYTIC
ELECTROLYTIQUE AU TANTALE
ELETTROLITICO AL TANTALIO
- FOLIE
FOIL
A FEUILLE
A FOGLIA
- KERAMIK
CERAMIC
CERAMIQUE
A CERAMICA
- GLIMMER
MICA
AU MICA
A MICA
- VIELSCHICHT
MULTILAYER
A COUCHES MULTIPLES
A PIU' STRATI
- POLYPROPYLEN
(KS-KP)

- GLEICHSPANNUNG
DC-VOLTAGE
TENSION CONTINUE
TENSION CONTINUA
- WECHSELSPANNUNG
AC-VOLTAGE
TENSION ALTERNATIVE
TENSIONE ALTERNATA
- REGELSPANNUNG
CONTROL VOLTAGE
TENSION DE REGLAGE
TENSIONE DI CONTROLLO
- ABSTIMMSPANNUNG
TUNING VOLTAGE
TENSION DE SYNTONISATION
TENSIONE DI SINTONIA
- SCHALTSPANNUNG
SWITCHING VOLTAGE
TENSION DE COMMUTATION
TENSIONE DI COMMUTAZIONE



- FÜR DIE GERÄTESICHERHEIT ABSOLUT NOTWENDIG UND ENTSPRECHEND DEN RICHTLINIEN DES VDE BZW. IEC. IM ERSATZFALL DÜRFEN NUR BAUTEILE MIT GLEICHER SPEZIFIKATION VERWENDET WERDEN.
- ABSOLUTELY NECESSARY FOR THE SAFETY OF THE SET. THESE COMPONENTS MEET THE SAFETY REQUIREMENTS ACCORDING TO VDE OR IEC. RESP. AND MUST BE REPLACED BY PARTS OF SAME SPECIFICATION ONLY.
- ABSOLUMENT NECESSAIRE POUR LA SECURITE DE L'APPAREIL ET CONFORME AUX REGULATIONS VDE ET IEC. EN CAS DE REMPLACEMENT. N'UTILISER QUE DES COMPOSANTS AVEC LES MEMES SPECIFICATIONS.
- NECESSARI PER LA SICUREZZA DELL' APPARECCHIO E SONO CONFORMI ALLE NORME DI SICUREZZA VDE E IEC. IN CASA DI SOSTITUZIONE IMPIEGARE QUINDI SOLTANTO PEZZI IN RICAMBIO ORIGINALI.

ÄNDERUNGEN VORBEHALTEN
SUBJECT TO ALTERATION
MODIFICATIONS RESERVEES
CON RISERVA DI MODIFICA

SPANNUNGEN MIT VOLTMETER (R1-10MΩ), FALLS NICHT ANDERS ANGEZEIGT, GEGEN MASSE GEMESSEN. MESSWERTE GELTEN BEI 220V~ NETZSPANNUNG.

IF NOT OTHERWISE INDICATED ALL VOLTAGES ARE MEASURED AGAINST CHASSIS WITH A VOLTMETER (R1-10MΩ). THE VALUES ARE VALID FOR 220V AC MAINS VOLTAGES.

SAUF INDICATION CONTRAIRE, LES TENSIONS SONT MESUREES PAR RAPPORT AU CHASSIS AVEC UN VOLTMETRE (R1-10MΩ). LES VALEURS SONT VALABLES POUR UNE TENSION SECTEUR DE 220V~ CA.

TENSIONI MISURATE CON VOLTMETRO (R1-10MΩ) SALVE ALTRE INDICAZIONI RIFERITE A MASSA. I VALORI DI MISURA VALGONO CON TENSIONE DI RETE DI 220V~.

BEI VOLLAUSSTEUERUNG
AT MAXIMUM LEVEL
POUR NIVEAU MAXIMAL
A MASSIMO LIVELLO

NF-SPANNUNG BEI 2X8W AN 8Ω-8V~ AM AUSGANG, 1KHZ, EQUALIZER EIN, LAUTST. VOLL AUF, CONTOUR EIN, BALANCE UND KLANGREGLER MITTE, LAUTSPRECHERRELAIS EIN.

AF VOLTAGES AT 2X8W INTO 8Ω-8V~ AM OUTPUT, 1KHZ, EQUALIZER ON, VOLUME FULLY UP, CONTOUR ON, BALANCE AND TONE CONTROLS IN CENTRE SETTING, LOUDSPEAKER SWITCHES ON.

TENSIONS BF POUR 2X8W SUR 8Ω-8V~ A LA SORTIE, 1KHZ, EGALISEUR EN SERVICE, VOLUME AU MAXIMUM, CONTOUR EN SERVICE, REGLAGES DE BALANCE ET DE TONALITE EN POSITION MEDIANE, COMMUTEUR HAUT-PARLEURS EN SERVICE.

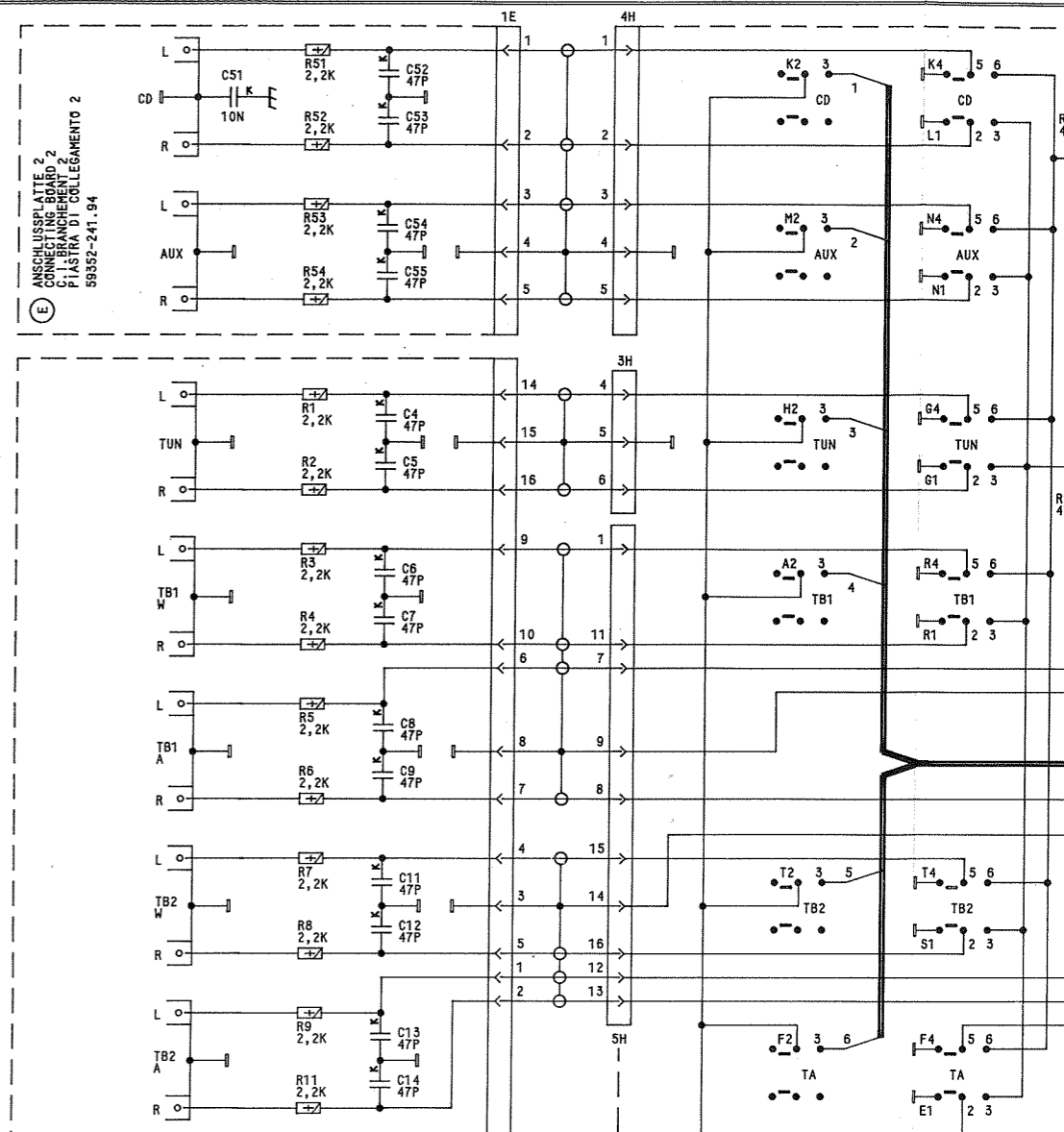
TENSIONI BF ALL'USCITA CON 2X8W E 8Ω-8V~ 1KHZ, EQUALIZER INSERITO, VOLUME AL MASSIMO, CONTOUR INSERITO, REGOLATORI DI BILANCIAMENTO E DI TONO AL CENTRO, COMUTATORI DEGLI ALTOPARLANTI INSERITI.

A - AUFNAHME
RECORD
ENREGISTREMENT
REGISTRAZIONE

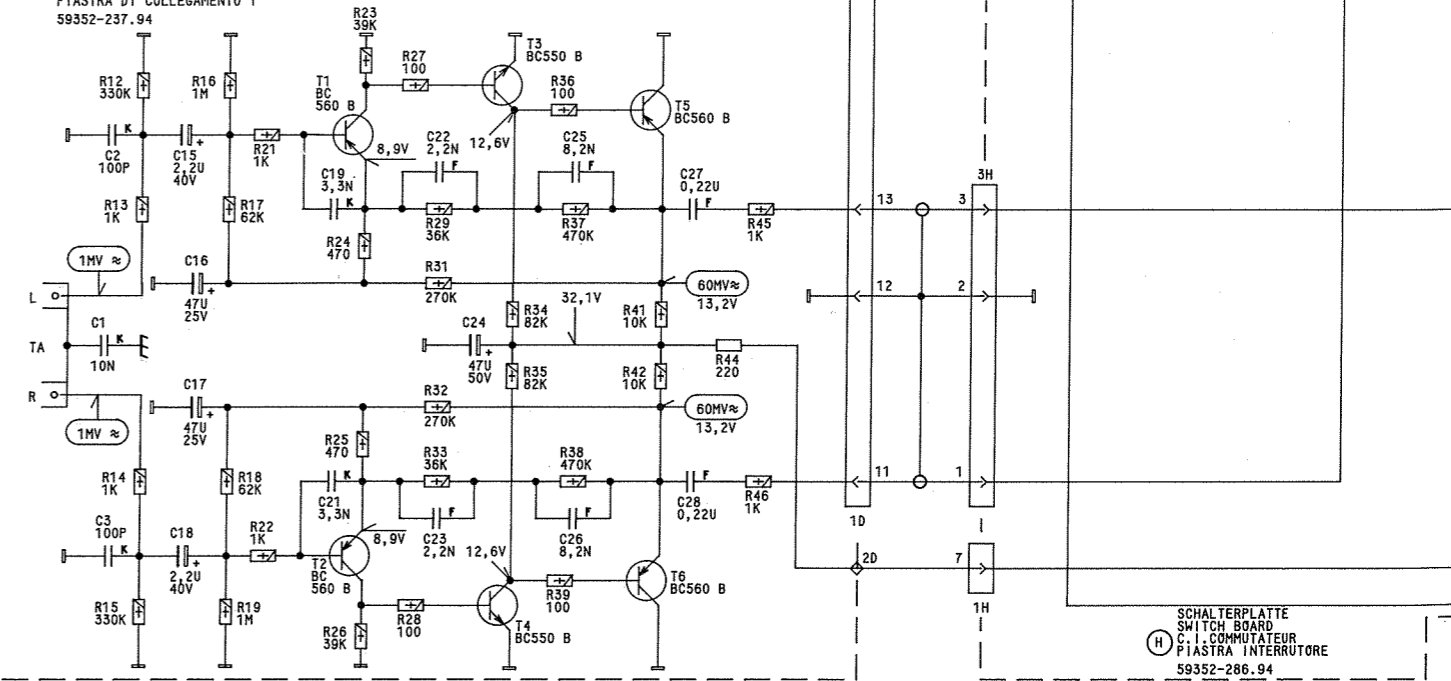
W - WIEDERGABE
PLAYBACK
REPRODUCTION
RIPRODUZIONE

L - LINKER KANAL
LEFT CHANNEL
CANAL DE GAUCHE
CANALE SINISTRO

R - RECHTER KANAL
RIGHT CHANNEL
CANAL DE DROITE
CANALE DESTRO

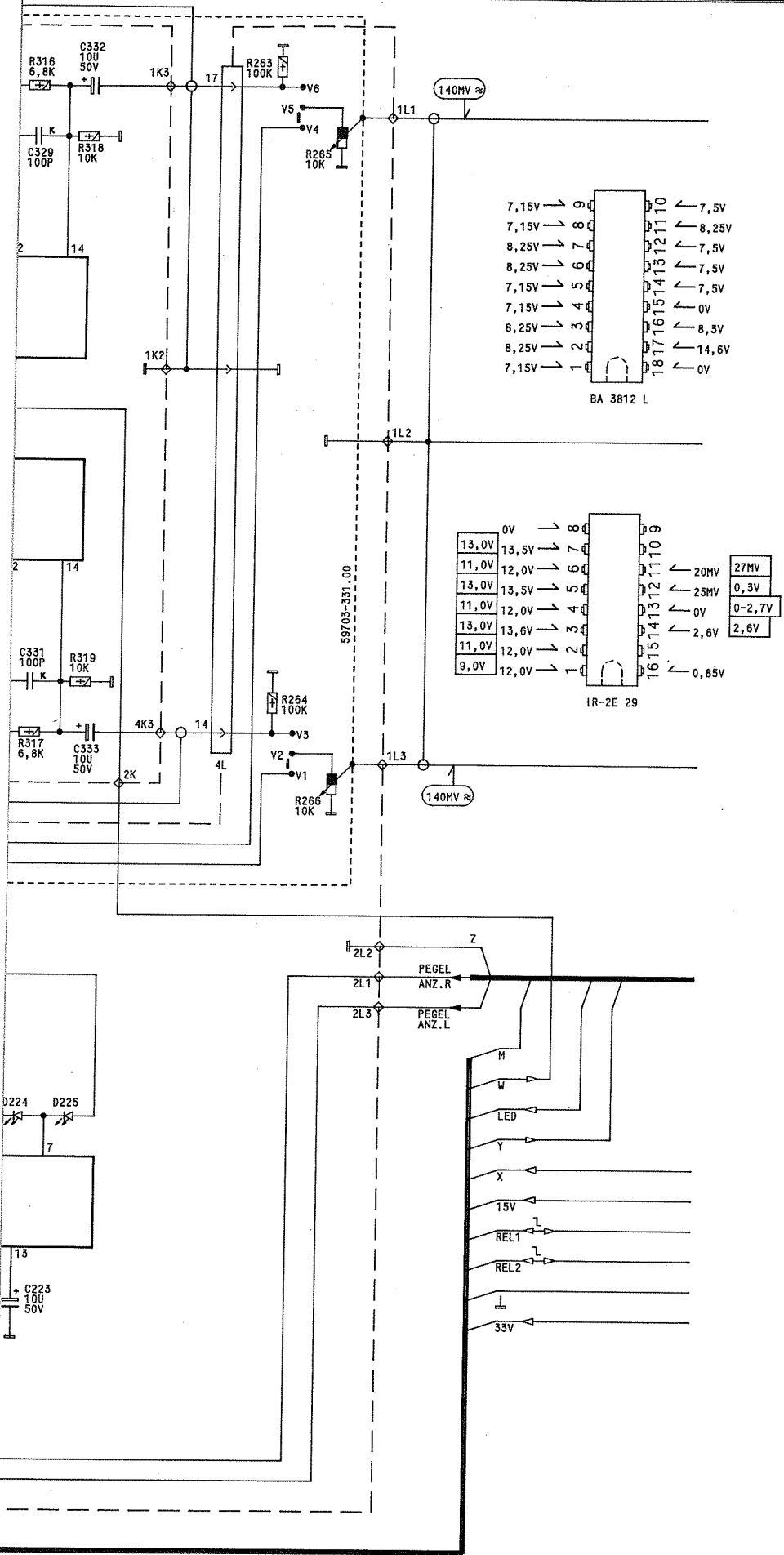


D ANSCHLUSSPLATTE 1
CONNECTING BOARD 1
C.I. BRANCHEMENT 1
PIASTRA DI COLLEGAMENTO 1
59352-237.94



H SCHALTERPLATTE
SWITCH BOARD
C.I. COMMUTEUR
PIASTRA INTERRUTORE
59352-286.94

MESSPUNKTE
MEASURING POINTS
ABGLEICHPUNKTE
ALIGNMENT POINTS



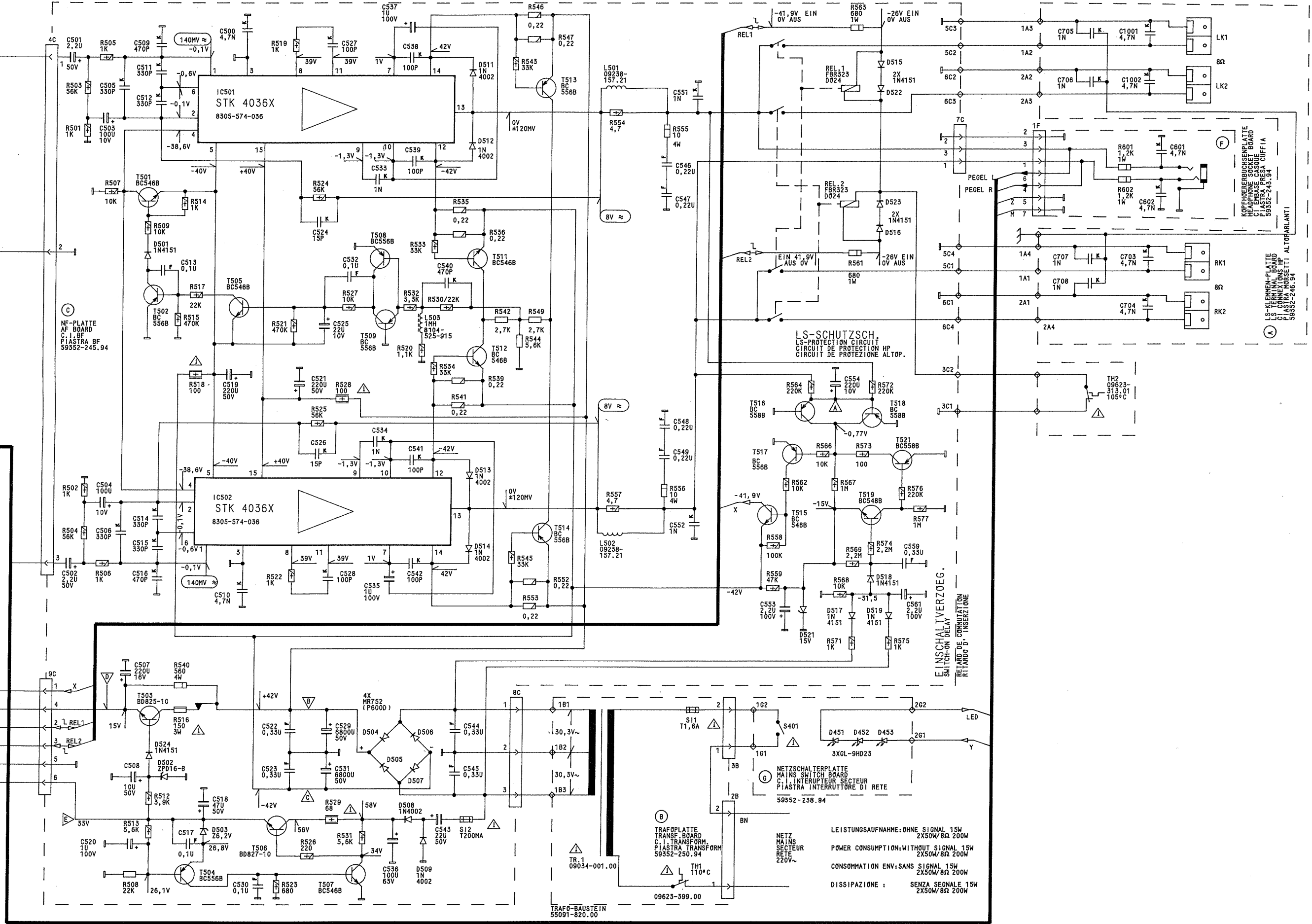
BA 3812 L

7,15V	→	9	←	7,5V
7,15V	→	8	←	8,25V
8,25V	→	7	←	7,5V
8,25V	→	6	←	7,5V
7,15V	→	5	←	7,5V
7,15V	→	4	←	0V
8,25V	→	3	←	8,3V
8,25V	→	2	←	14,6V
7,15V	→	1	←	0V

IR-2E 29

13,0V	→	8	←	27mV
11,0V	→	7	←	0,3V
13,0V	→	6	←	20mV
11,0V	→	5	←	25mV
13,0V	→	4	←	0V
11,0V	→	3	←	0-2,7V
13,0V	→	2	←	2,6V
11,0V	→	1	←	0,85V
9,0V	→	16	←	
12,0V	→	15	←	
12,0V	→	14	←	
12,0V	→	13	←	
12,0V	→	12	←	
12,0V	→	11	←	
12,0V	→	10	←	
12,0V	→	9	←	

ENDSTUFE / FINAL STAGE / ETAGE FINAL / STADIO FINALE



(C) NF-PLATTE AF BOARD C.I. PIASTRA BF 59352-245.94

(F) KOPFHÖRERBUCHSENPORTE HEADPHONE JACK BOARD C.I. PIASTRA PRESA CUFFIA 59352-245.94

(A) LS-KLEMMEN-PLATTE C.I. CONNESSIONI HP PIASTRA MORSETTI ALTOPARLANTI 59352-246.94

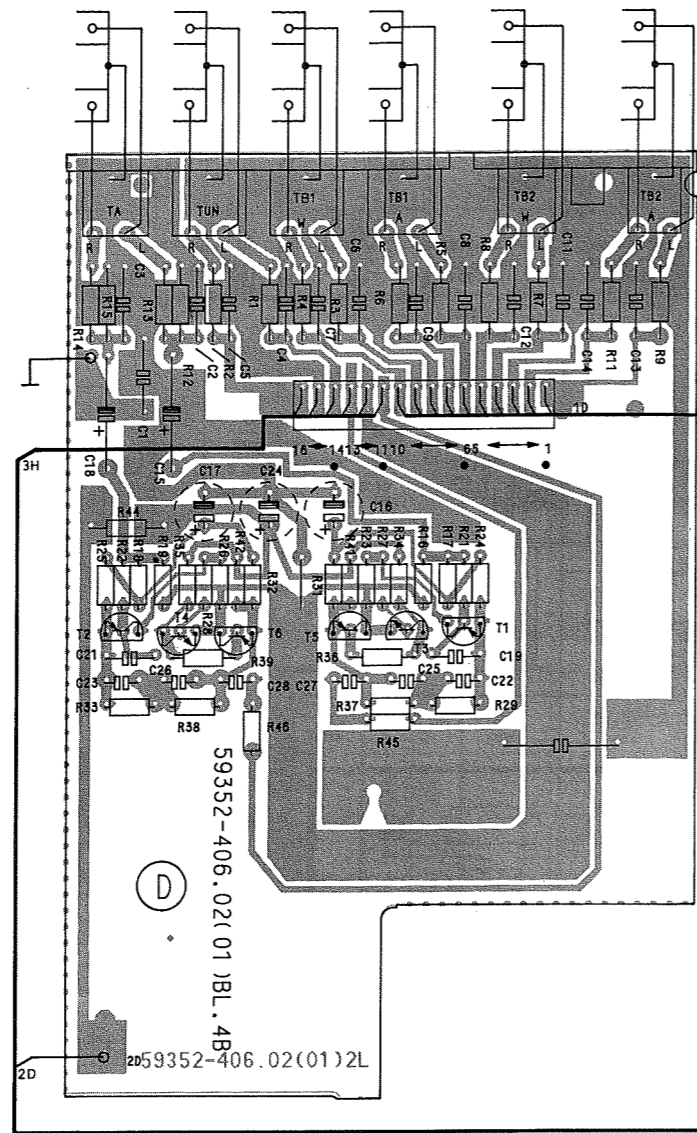
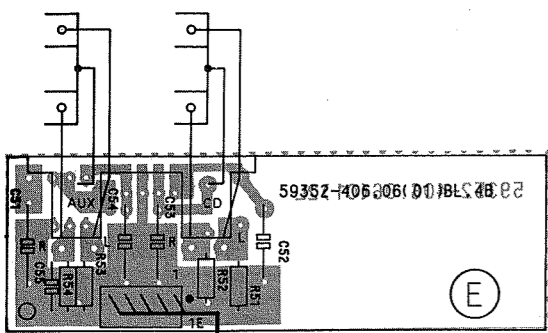
EINSCHALTVERZÖG. SWITCH-ON DELAY RETARDO D'INSERZIONE

(B) TRAFOPLATTE TRANSF. BOARD C.I. TRANSFORM. PIASTRA TRANSFORM 59352-250.94

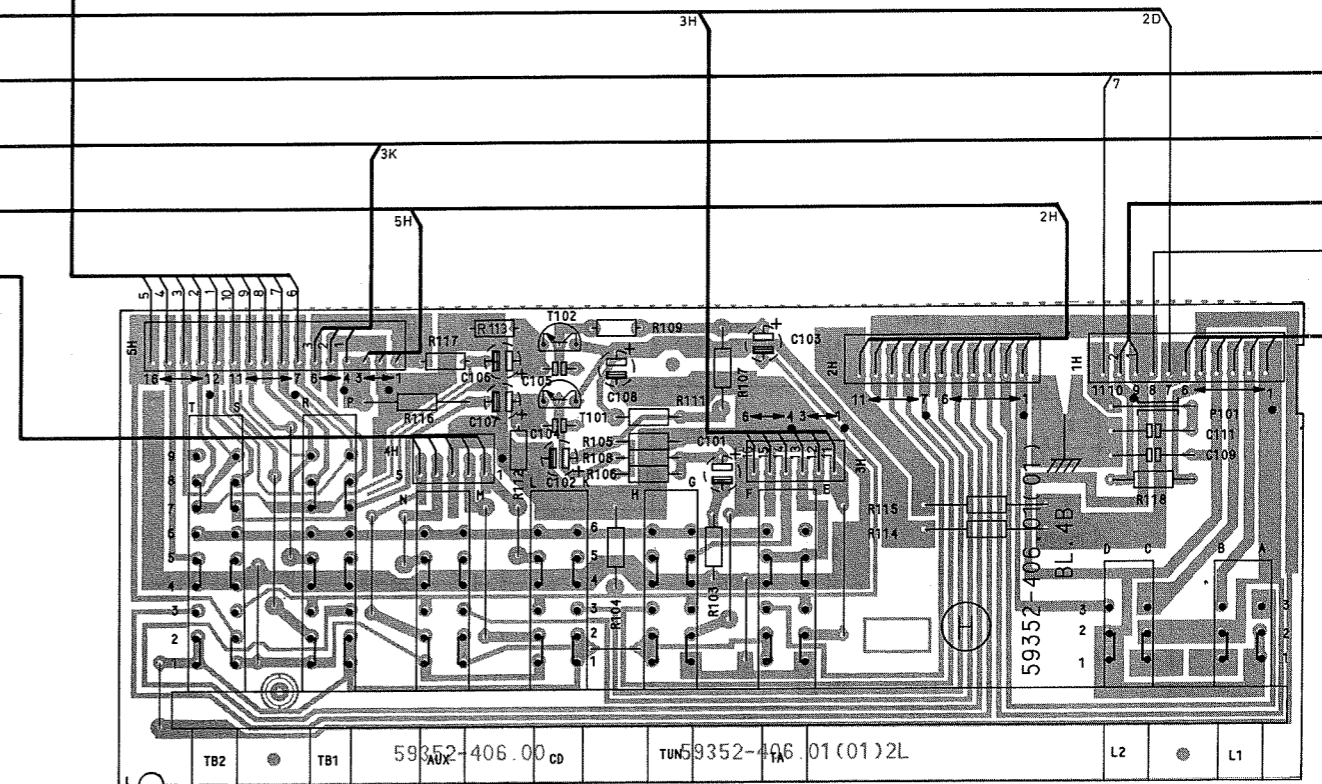
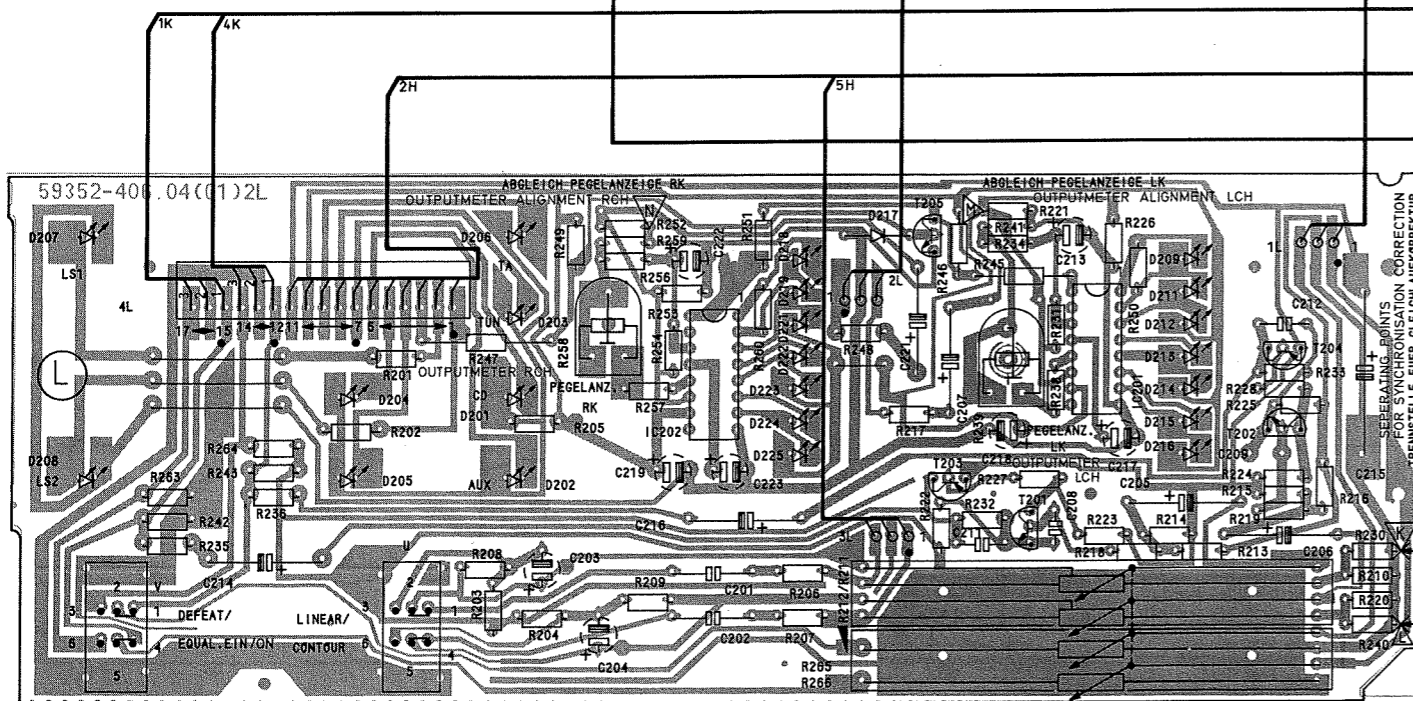
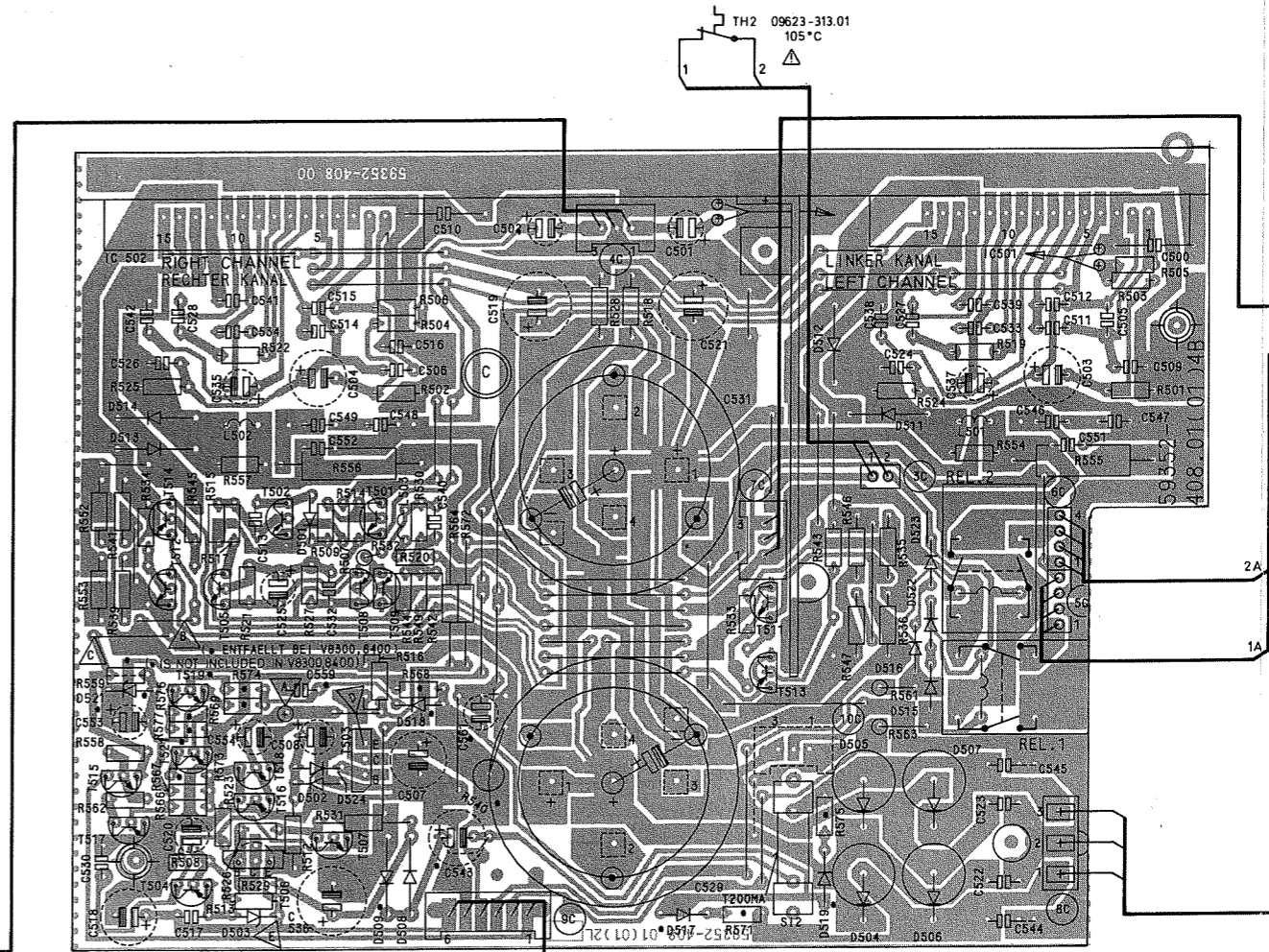
(G) NETZSCHALTERPLATTE MAINS SWITCH BOARD C.I. INTERRUPTORE SECTEUR PIASTRA INTERRUPTORE DI RETE 59352-238.94

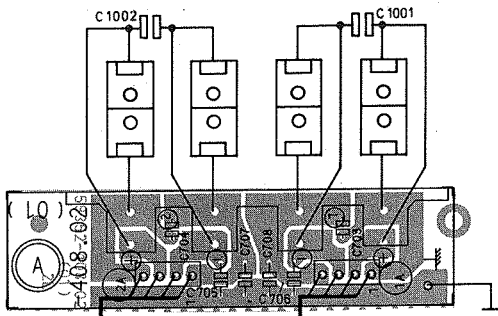
LEISTUNGS-AUFNAHME: OHNE SIGNAL 15W 2X50W/8Ω 200W
 POWER CONSUMPTION: WITHOUT SIGNAL 15W 2X50W/8Ω 200W
 CONSUMAZIONE ENV. SANS SIGNAL 15W 2X50W/8Ω 200W
 DISSIPAZIONE: SENZA SEGNALE 15W 2X50W/8Ω 200W

MESSPUNKTE MEASURING POINTS
 ABGLEICHPUNKTE ALIGNMENT POINTS

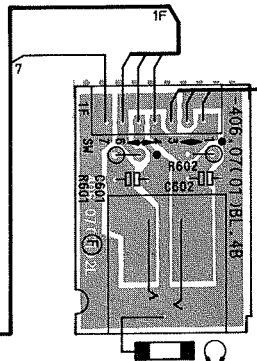
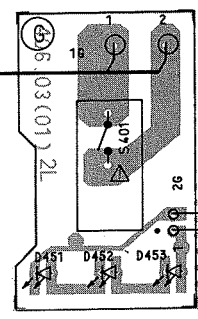
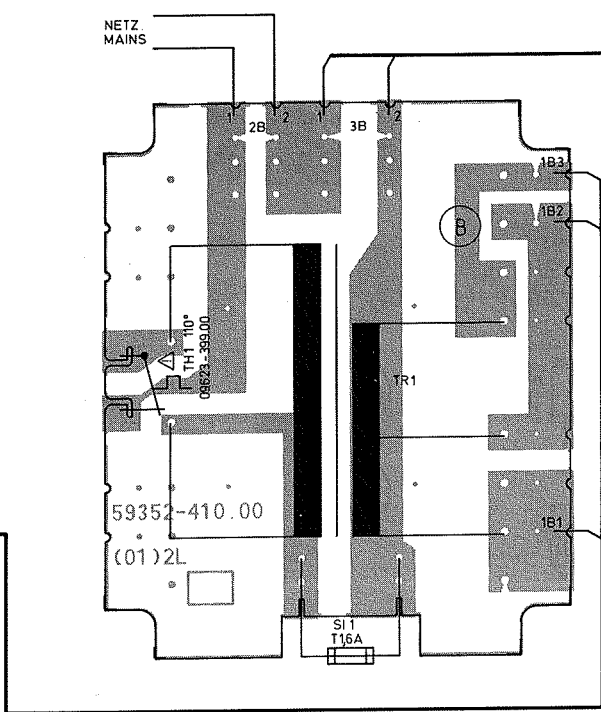


LÖTSEITE
SOLDER SIDE
CÔTÉ SOUDURES
LATO SALDATURE



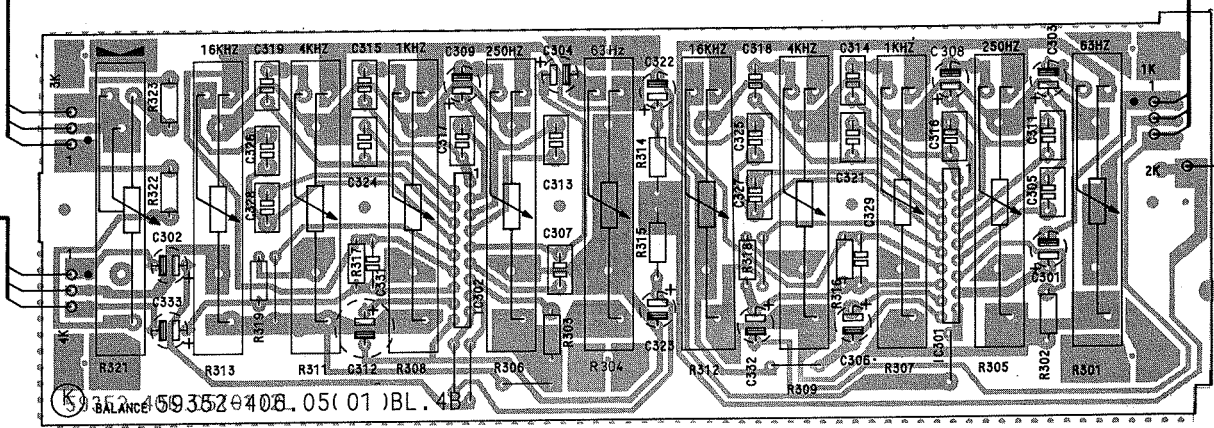


2A 1A



4K 3K

1K



GRUNDIG V8200