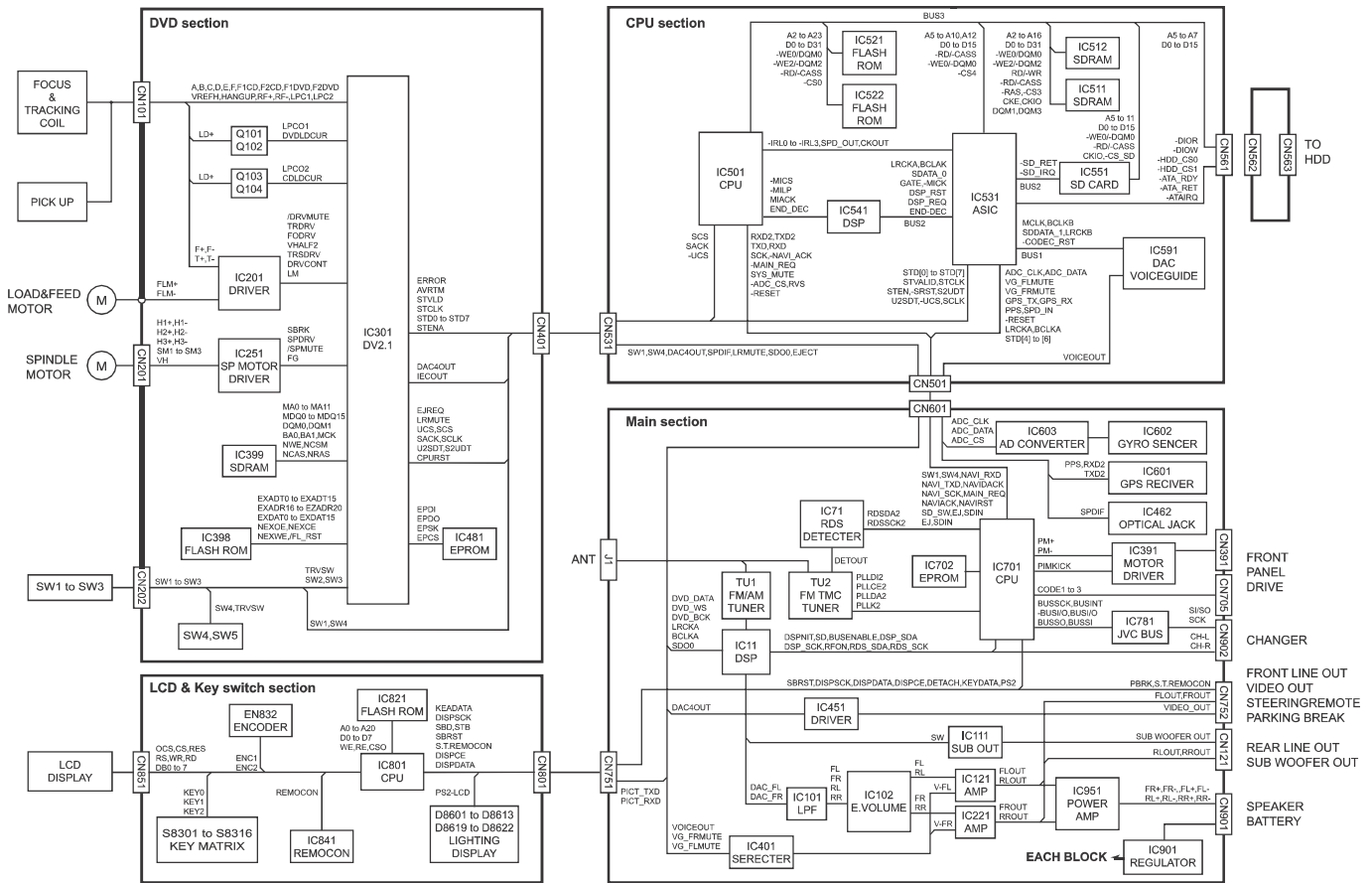
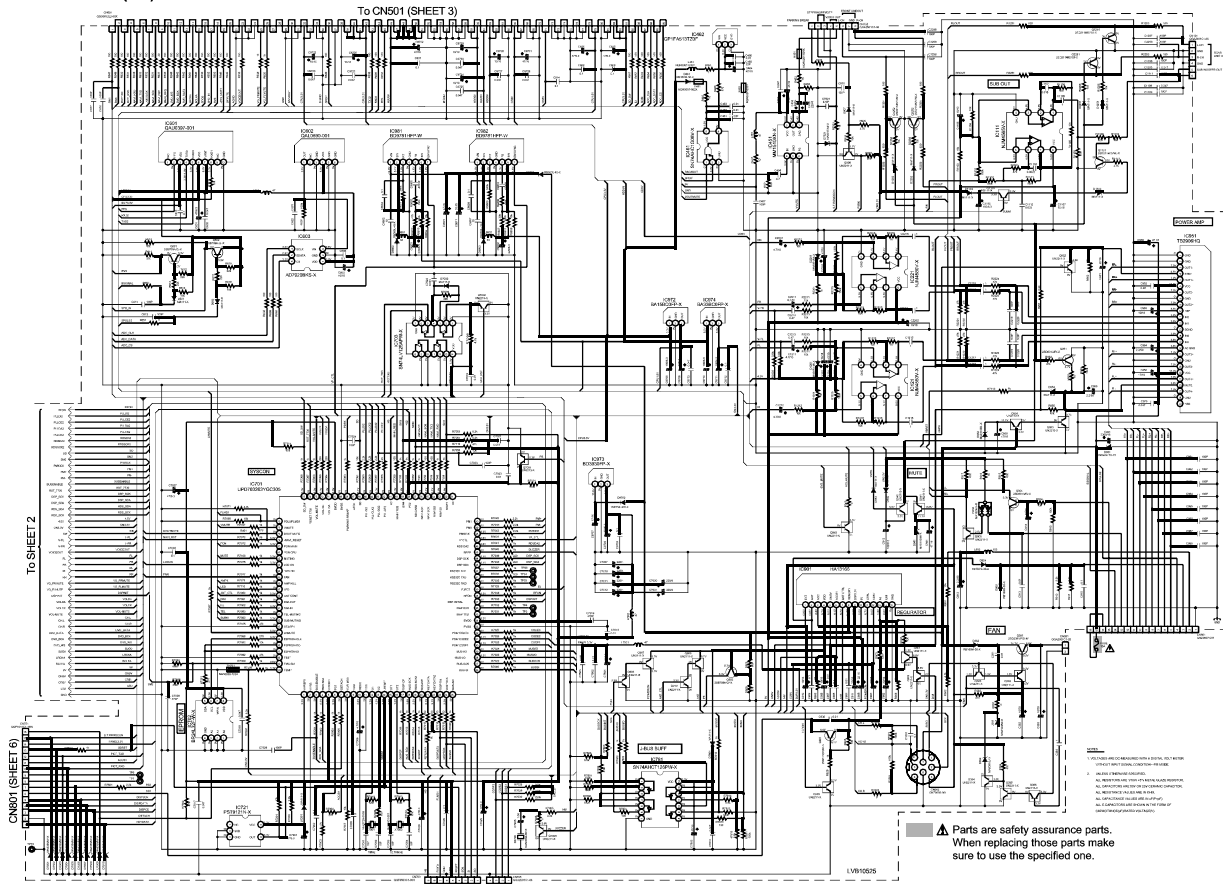


# Block diagram

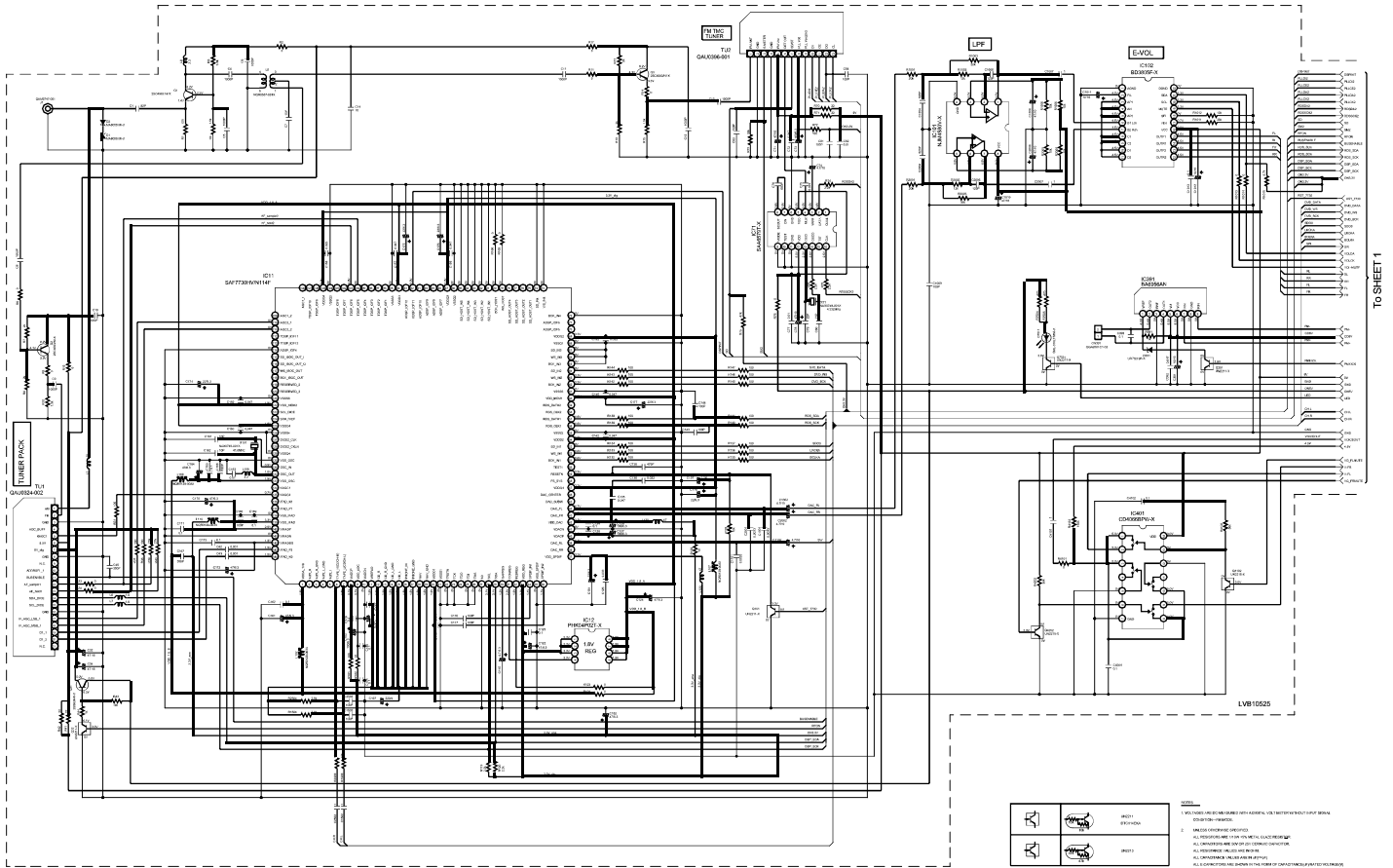


## Standard schematic diagrams

### ■ Main section (1/2)



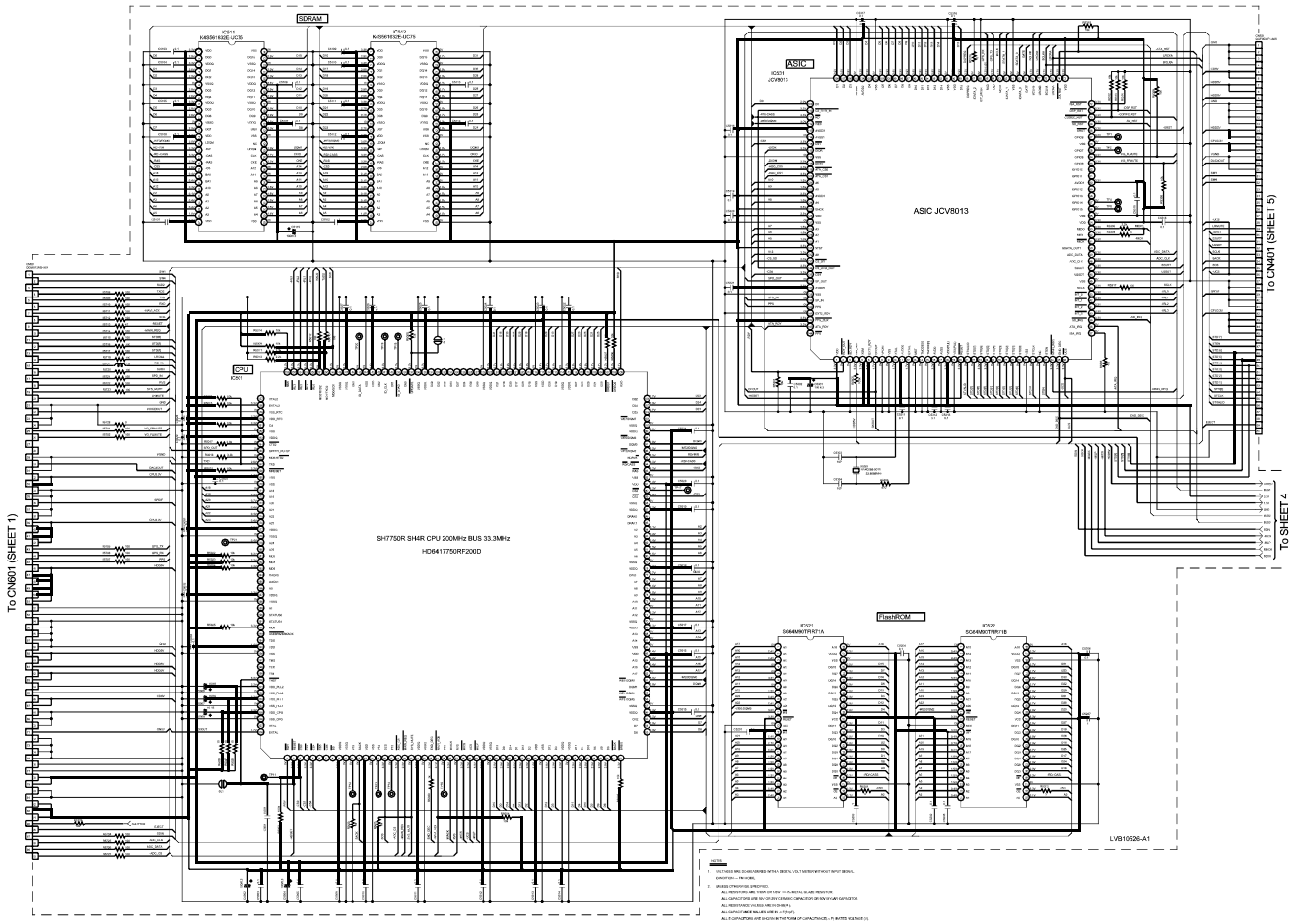
■ Main section (1/2)



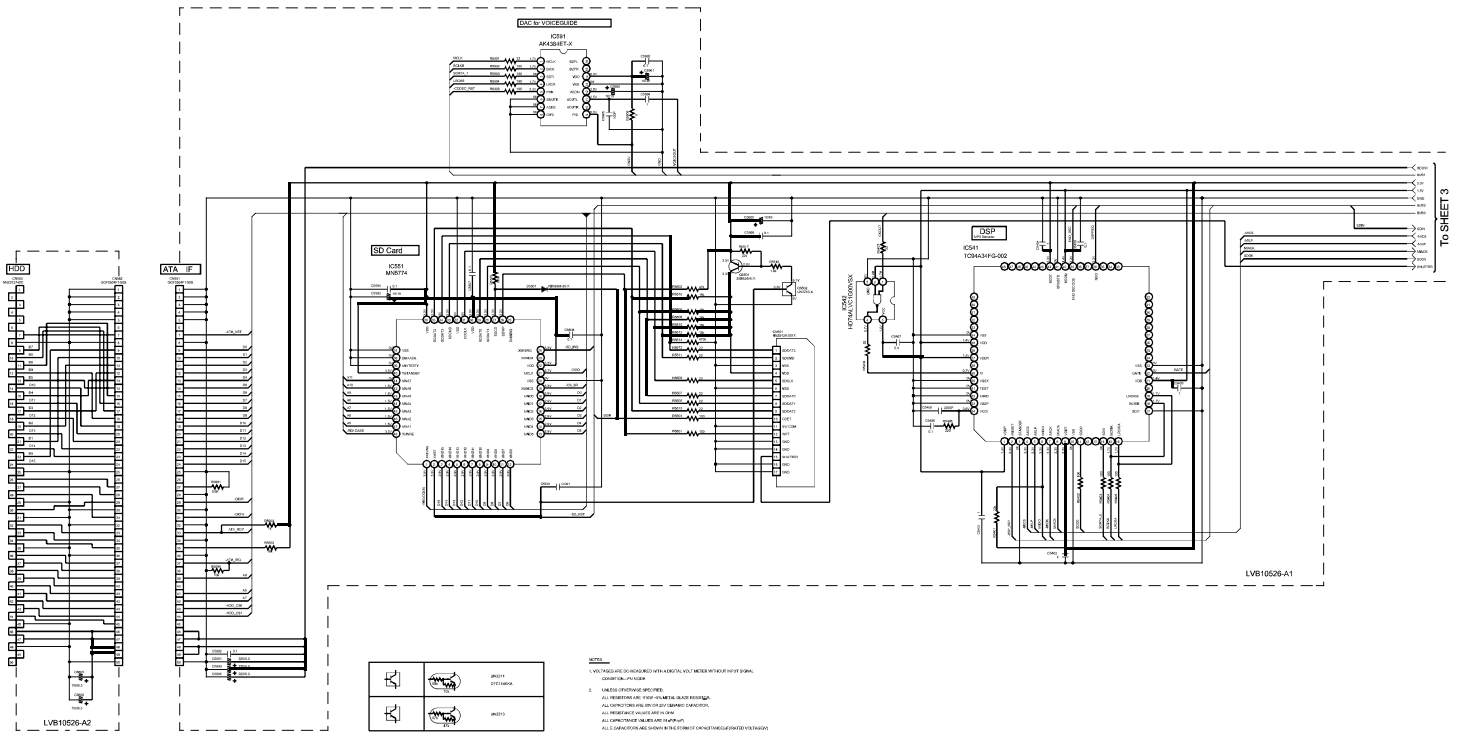
		RELAY
		SWITCH
		SWITCH
		SWITCH

1. ALL SYMBOLS ARE TO BE DRAWN WITH REFERENCE TO THE FACTORY DRAWING FOR THE SYMBOLS.  
 2. ALL SYMBOLS ARE TO BE DRAWN WITH REFERENCE TO THE FACTORY DRAWING FOR THE SYMBOLS.  
 3. ALL SYMBOLS ARE TO BE DRAWN WITH REFERENCE TO THE FACTORY DRAWING FOR THE SYMBOLS.  
 4. ALL SYMBOLS ARE TO BE DRAWN WITH REFERENCE TO THE FACTORY DRAWING FOR THE SYMBOLS.  
 5. ALL SYMBOLS ARE TO BE DRAWN WITH REFERENCE TO THE FACTORY DRAWING FOR THE SYMBOLS.  
 6. ALL SYMBOLS ARE TO BE DRAWN WITH REFERENCE TO THE FACTORY DRAWING FOR THE SYMBOLS.  
 7. ALL SYMBOLS ARE TO BE DRAWN WITH REFERENCE TO THE FACTORY DRAWING FOR THE SYMBOLS.  
 8. ALL SYMBOLS ARE TO BE DRAWN WITH REFERENCE TO THE FACTORY DRAWING FOR THE SYMBOLS.  
 9. ALL SYMBOLS ARE TO BE DRAWN WITH REFERENCE TO THE FACTORY DRAWING FOR THE SYMBOLS.  
 10. ALL SYMBOLS ARE TO BE DRAWN WITH REFERENCE TO THE FACTORY DRAWING FOR THE SYMBOLS.

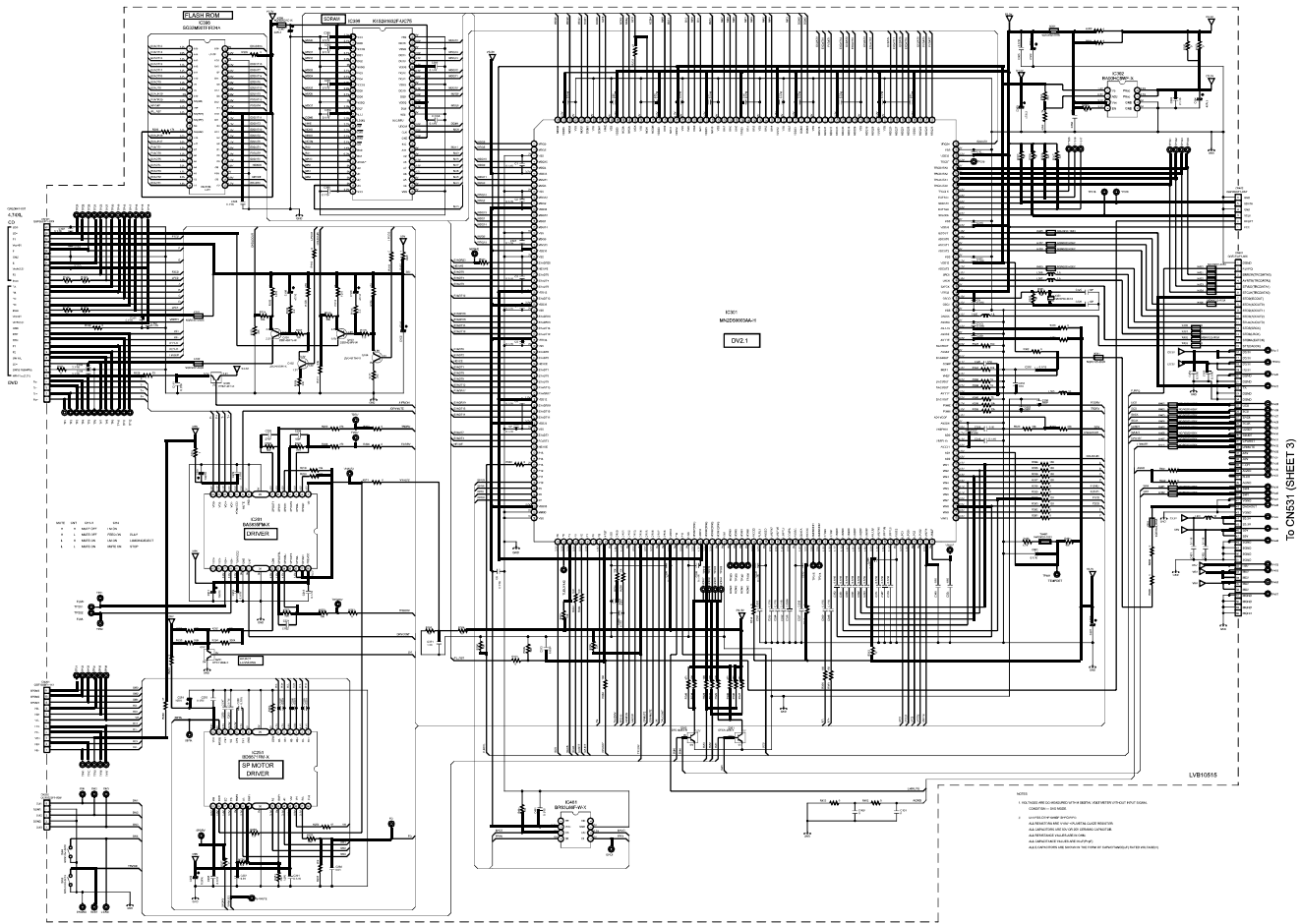
■ CPU section (1/2)



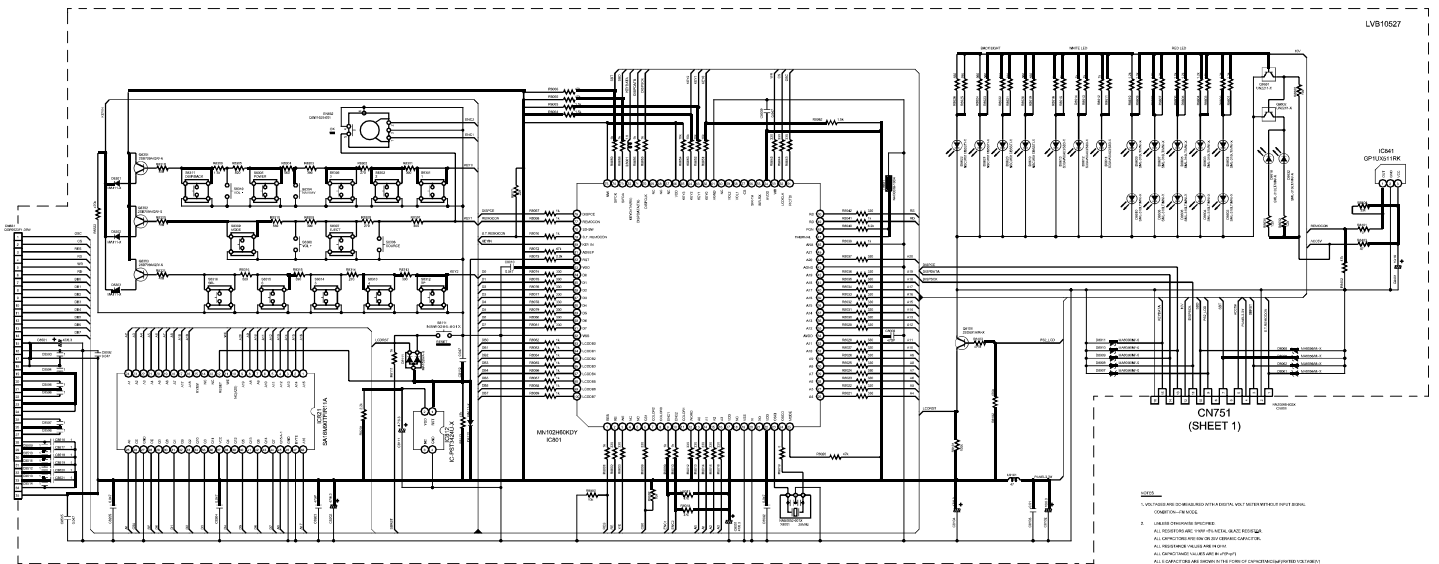
■ CPU section (2/2)



■ DVD section



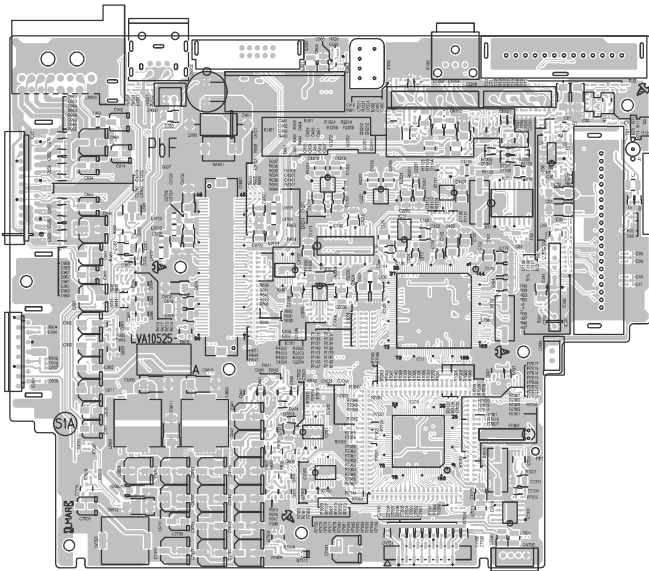
■ LCD & Key switch section



## Printed circuit boards

■ Main board Lead free solder used in the board (material : Sn-Ag-Cu, melting point : 219 Centigrade)

Forward side



Reverse side

