

# NOKIA 6210



## SUPPORT GUIDE FOR SEND, RECEIVE AND READ SMS WITH TERMINAL PROGRAM AND NOKIA 6210

**NOKIA**



# Contents

1. INTRODUCTION .....	1
2. HOW TO SEND, RECEIVE AND READ SMS WITH A TERMINAL PROGRAM.....	1

## Legal Notice

Copyright © Nokia Mobile Phones 2000. All rights reserved.

Reproduction, transfer, distribution or storage of part or all of the contents of this document in any form without the prior written permission of Nokia is prohibited.

Nokia and Nokia Connecting People are registered trademarks of the Nokia Corporation. Other product and company names mentioned herein may be trademarks or tradenames of their respective owners.

Nokia operates a policy of continuous development. Nokia reserves the right to make changes and improvements to any of the products described in this document without prior notice.

Under no circumstances shall Nokia be responsible for any loss of data or income or any special, incidental, consequential or indirect damages howsoever caused.

The contents of this document are provided "as is". Except as required by applicable law, no warranties of any kind, either express or implied, including, but not limited to, the implied warranties of merchantability and fitness for a particular purpose, are made in relation to the accuracy, reliability or contents of this document. Nokia reserves the right to revise this document or withdraw it at any time without prior notice.

## 1. INTRODUCTION

---

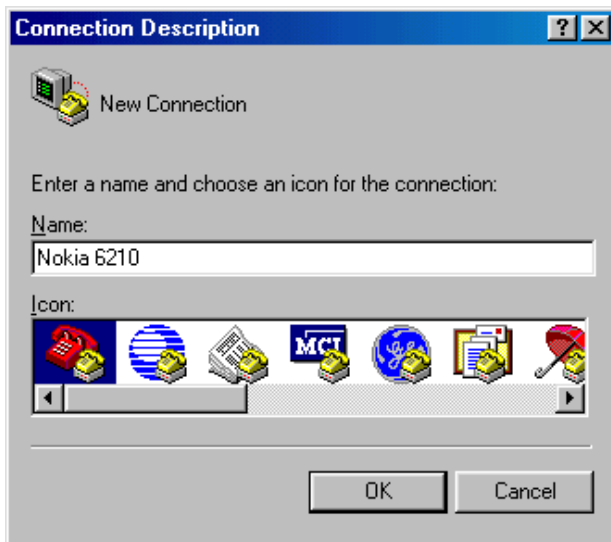
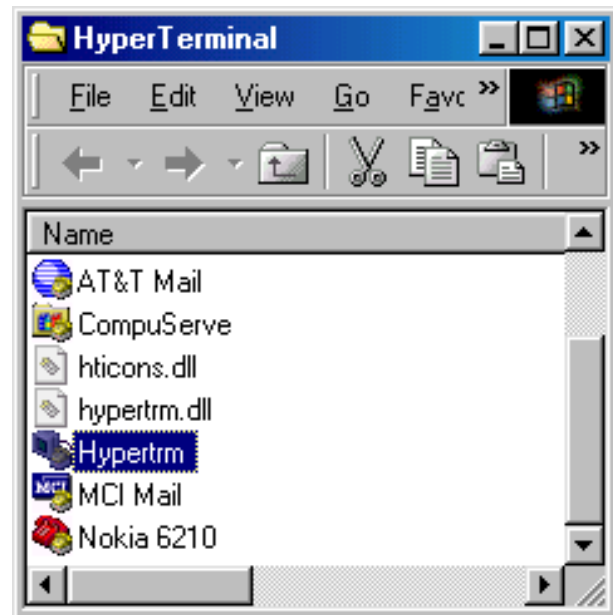
- Computers use AT commands to communicate with modems. Most communications applications, however, have a user-friendly interface that hides these AT commands from the user. You issue AT commands via your communications application. When the software in the Nokia product has received an AT command, it responds with a message that is displayed on the screen of the device you are using.
- Note that the "AT" or "at" prefix must be included at the beginning of each command line.
- This Quick Guide shows you how to send, receive and read an SMS with a Terminal Program and the Nokia 6210.
- Windows HyperTerminal is used in this example

## 2. INSTRUCTIONS

---

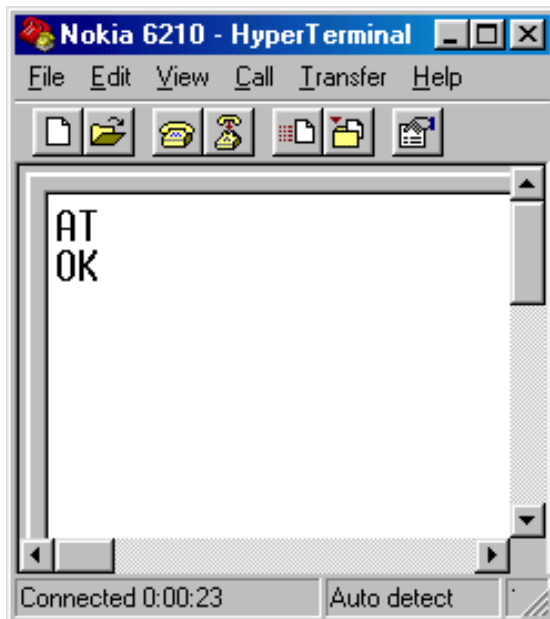
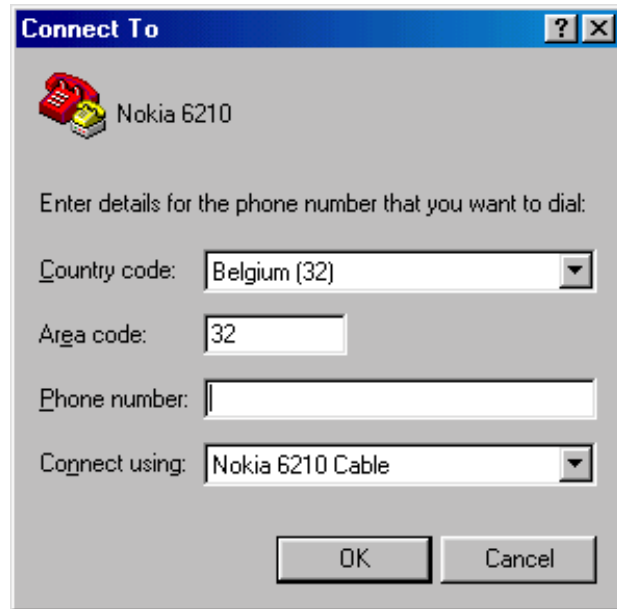
### How to create a new connection in HyperTerminal

1. Open HyperTerminal (Start | Programs | Accessories | HyperTerminal).
2. Select *HyperTrm*



- Enter a name and choose an icon for the connection.

- Check that the Nokia 6210 Cable or the Nokia 6210 Irda connection is selected in the Connect Using field
- You may leave the Phone number field empty. In this example it is not required
- Click OK if there is a number or click Cancel if there is no number

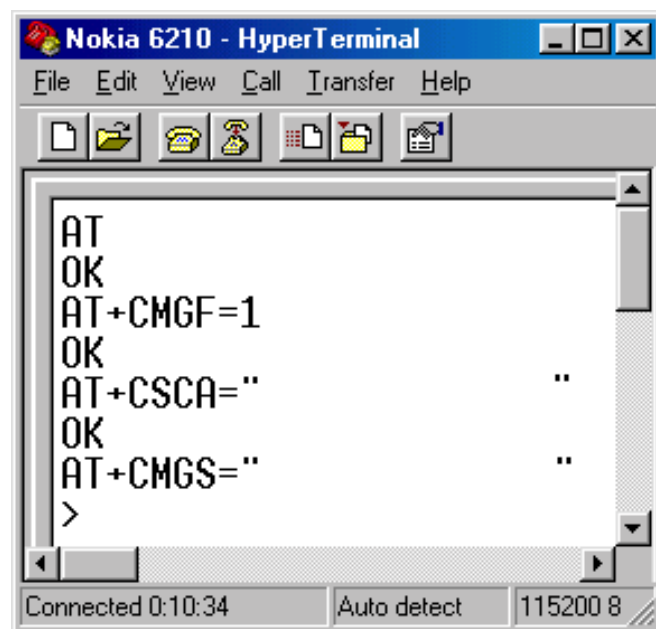


- Now you can enter AT commands in the terminal window. You can test the connection to the Nokia 6210 phone by typing "AT" then pressing Enter.
- You should get "OK" as a response
- If you don't get any response, check that there is not any other program running in the background.
- Please check the programs in the taskbar and close them.

# Sending an SMS

After you have typed AT and received the OK response, please continue with the steps below.

- Define the message format by typing AT+CMGF=1 (Text mode).
- Set the Message centre number by typing AT+CSCA="XXX" between quotation marks.
- XXX is your network provider's message centre number. You will find the number in the phone's Message settings.
- Enter the recipient's phone number between quotation marks using the AT+CMGS="YYY" command.
- Write the message and when it's finished press the **Ctrl** and **Z** buttons simultaneously, to send the SMS.



```
Nokia 6210 - HyperTerminal
File Edit View Call Transfer Help
[Icons]
AT
OK
AT+CMGF=1
OK
AT+CSCA=""
OK
AT+CMGS=""
>
Connected 0:10:34 Auto detect 115200 8
```

- In this real example SMSC and the receiver's numbers have been omitted from the screen shot picture.



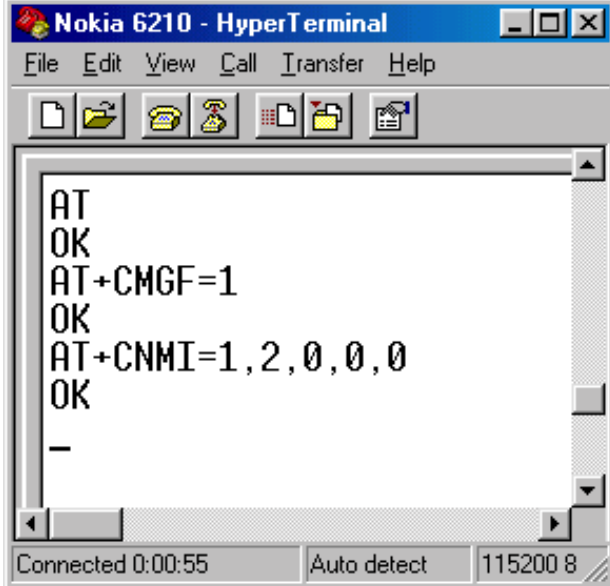
You cannot type more than 160 characters - otherwise you'll get an error message.

```
0210 - HyperTerminal
File Edit View Call Transfer Help
[Icons]
OK
AT
OK
AT+CMGF=1
OK
AT+CSCA=""+: ) ""
OK
AT+CMGS=""+: 3 ""
>You cannot type more than 160 characters, otherwise
you'll get an error message. +
+CMGS: 223
OK
Connected 1:00:38 Auto detect 115200 8-N-1 SCROLL CAPS NUM Capture Print echo
```

# Receiving an SMS

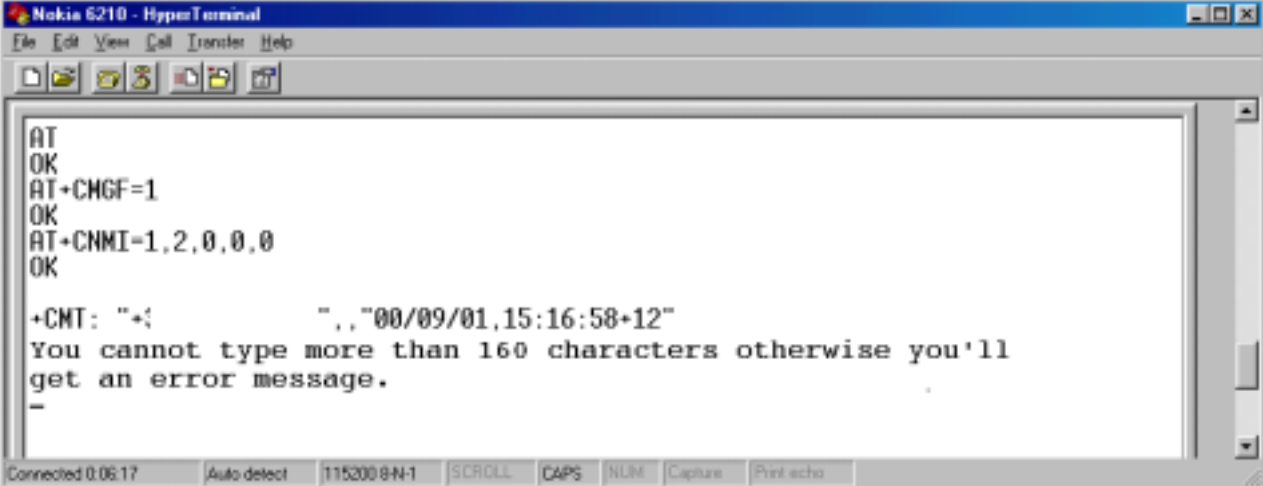
After you have typed AT and received the OK response, please continue with the steps below.

- Define the message format by typing AT+CMGF=1
- Type AT+CNMI=1,2,0,0,0 in order to see all the messages received.



```
Nokia 6210 - HyperTerminal
File Edit View Call Transfer Help
[Icons]
AT
OK
AT+CMGF=1
OK
AT+CNMI=1,2,0,0,0
OK
-
Connected 0:00:55 Auto detect 115200 8
```

- When you receive a message you will have this kind of view on the Terminal program screen. The date and time is from the Short Message Center. The date format is yy/mm/dd.



```
Nokia 6210 - HyperTerminal
File Edit View Call Transfer Help
[Icons]
AT
OK
AT+CMGF=1
OK
AT+CNMI=1,2,0,0,0
OK
+CMT: "+;          ",,"00/09/01,15:16:58+12"
You cannot type more than 160 characters otherwise you'll
get an error message.
-
Connected 0:06:17 Auto detect 115200 8-N-1 SCROLL CAPS NUM Capture Print echo
```

- In this real example the sender's number is omitted from the screen shot picture.



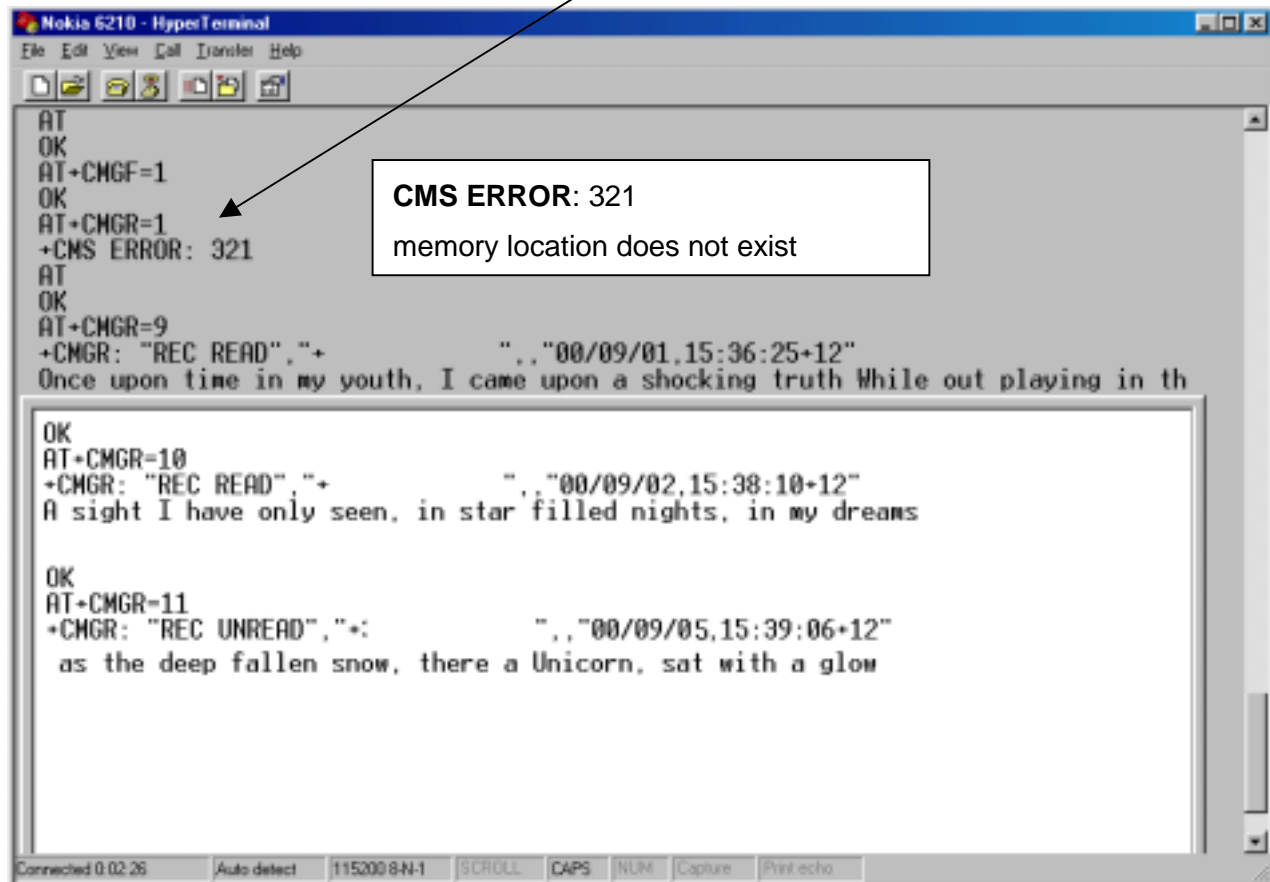
# Reading Messages

You have received SMS messages while the Nokia 6210 phone was not connected to the PC. You want to have a hard copy of them or save the messages into the PC's memory.

First please check that the Nokia 6210 Cable or the Nokia 6210 Irda is connected to your computer. Start the HyperTerminal and open the session that you have already saved.

After you have typed AT and received the OK response, please continue with the steps below.

- Define the message format by typing AT+CMGF=1
- Type AT+CMGR=1(a message in the first location) If it is empty type next AT+CMGR=2 or AT+CMGR=3 until you don't get an **ERROR** message like that in the picture



```
Nokia 6210 - HyperTerminal
File Edit View Call Transfer Help
[Icons]
AT
OK
AT+CMGF=1
OK
AT+CMGR=1
+CMS ERROR: 321
AT
OK
AT+CMGR=9
+CMGR: "REC READ", "+", "00/09/01,15:36:25+12"
Once upon time in my youth, I came upon a shocking truth While out playing in th

OK
AT+CMGR=10
+CMGR: "REC READ", "+", "00/09/02,15:38:10+12"
A sight I have only seen, in star filled nights, in my dreams

OK
AT+CMGR=11
+CMGR: "REC UNREAD", "+:", "00/09/05,15:39:06+12"
as the deep fallen snow, there a Unicorn, sat with a glow

Connected 0 02:26 Auto detect 115200 8-N-1 SCROLL CAPS NUM Capture Print echo
```

**CMS ERROR: 321**  
memory location does not exist

- In this real example the sender's number is omitted from the screen shot picture.

## Descriptions for the defined values:

"REC UNREAD" = received unread

"REC READ" = received read

"STO UNSENT" = stored unsent

"STO SENT" = stored sent

## +CMS ERROR Values

The following table indicates which SMS AT commands can return a numeric <err> value.

The kinds of errors that can generate <err> values are listed in numbers. The meanings of the numbers are given under the table.

AT Command	+CMS <err> Value	Kinds of Errors
+CNMI=	300	15
	301	5
	310	2
	320	6

AT Command	+CMS <err> Value	Kinds of Errors
+CMGS=	0-127	9
	128-255	10
	300	15
	301	5
	304	11
	305	12
	310	2
	311	3
	312	1
	316	4
	330	7
	331	16
+CMGR=	300	15
	301	5
	310	2
	311	3
	312	1
	316	4
	320	6
	321	8

## **+CMS ERROR Values: Kinds of Errors**

- 1 phone security code required to execute the AT command
- 2 ME does not have a SIM connected to it
- 3 SIM PIN required to execute the AT command
- 4 SIM PUK required to execute the AT command
- 5 SMS interface is reserved by some other application
- 6 general memory error, e.g. problems in SIM database communication
- 7 message to be sent to network does not contain SMSC address and SMSC address cannot be found from TA or ME
- 8 memory location does not exist
- 9 RP layer cause value from network
- 10 TP layer cause value from network
- 11 PDU mode is enabled: length of the given PDU is not equivalent to the given <length>, or ME/TA detects that PDU is of invalid format
- 12 text mode is enabled: too long message is tried to be sent/stored, or +CSMP does not contain valid SMS-SUBMIT (in case of +CMGS=), or ME/TA detects that PDU is of invalid format
- 13 SMS memory is full
- 14 <index> given in +CMSS does not contain SMS-SUBMIT or SMS-COMMAND, or <index> given in +CMSS contains SMS-COMMAND and <da> is given
- 15 external ME is not connected to TA; this is not applicable to products that have ME and TA in one entity
- 16 no network service