

# PP I PCB Relays

## 1 pole, 8 A

RP0\*\*\* machine-soldering proof, upright  
 RP5\*\*\* immersion cleanable, upright

For dc operation, neutral, monostable  
 with 1 changeover contact

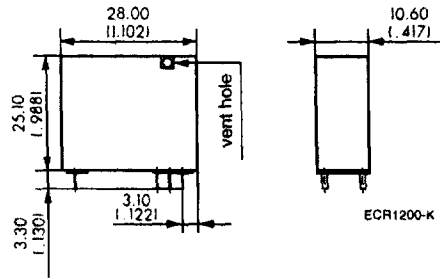
PCB pin spacing grid 2,5 mm

Creepage/clearance ≥ 4 mm

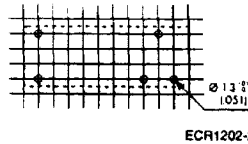
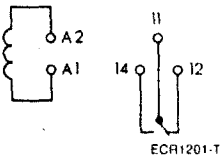
For electrical control and switching  
 technology, e.g. for heating controllers,  
 switching contactors, servo-motor controls  
 solenoid valves etc.

VDE, ÖVE, SEV, UL, CSA,  
 NEMKO, DEMKO, FINKO

Approximate weight: 13 g



## Base terminals



Mounting hole layout  
 View from the wiring side

Pin spacing grid T = 2,54 (0,100)  
 All dimensions in mm (inches)

Rated voltage	250 Vac
Max. contact voltage	440 Vac
Rated current	8 A
Make current (max. 4 s at 10 % duty cycle)	16 A
Nominal power rating	2000 VA

For accessories, refer to page 88

## RP I PCB Relays

Rated voltage	Voltage range at 20°C	Coil resistance at 20°C	Ordering code	DU	Price each			
					Pcs	DU+	100+	500+
<b>machine-soldering proof, contact material AgCdO</b>								
6	4,2 ... 11,4	80 ± 10 %	RP010006	25				
12	8,4 ... 22,8	330 ± 10 %	RP010012	25				<b>NEW</b>
24	16,8 ... 45,6	1200 ± 15 %	RP010024	25				
48	33,6 ... 91,2	4700 ± 15 %	RP010048	25				<b>NEW</b>
<b>machine-soldering proof, contact material AgNi 0,15</b>								
12	8,4 ... 22,8	330 ± 10 %	RP011012	25				
24	16,8 ... 45,6	1200 ± 15 %	RP011024	25				
<b>immersion cleanable, contact material AgCdO</b>								
12	8,4 ... 22,8	330 ± 10 %	RP510012	25				
24	16,8 ... 45,6	1200 ± 15 %	RP510024	25				
<b>immersion cleanable, contact material AgNi 0,15</b>								
12	8,4 ... 22,8	330 ± 10 %	RP511012	25				
24	16,8 ... 45,6	1200 ± 15 %	RP511024	25				

Packing units 25/100 pieces

# RP I PCB Relays

## 1 pole, 8 A

**RP1**★★★ machine-soldering proof, horizontal

**RP6**★★★ immersion cleanable, horizontal

For dc operation, neutral, monostable with 1 changeover contact

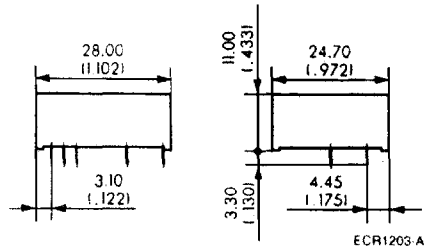
PCB pin spacing grid 2,5 mm

Creepage/clearance  $\geq 4$  mm

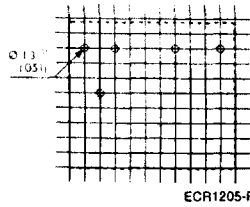
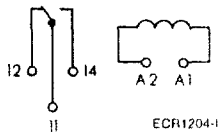
For electrical control and switching technology, e.g. for heating controllers, switching contactors, servo-motor controls solenoid valves etc.

VDE, ÖVE, SEV, UL, CSA, NEMKO, DEMKO, FINKO

Approximate weight 13 g



## Base terminals



Mounting hole layout  
View from the wiring side

Pin spacing grid T = 2,54 (.100)  
All dimensions in mm (inches)

Rated voltage	250 Vac
Max. contact voltage	440 Vac
Rated current	8 A
Make current (max. 4 s at 10 % duty cycle)	16 A
Nominal power rating	2000 VA

## RP I PCB Relays

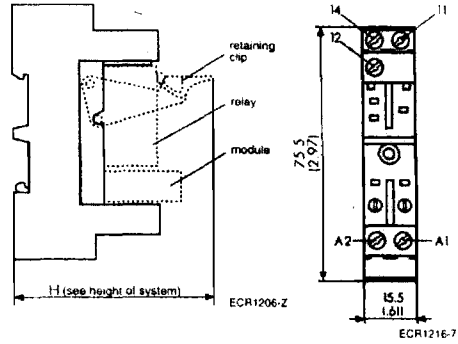
Rated voltage	Voltage range at 20°C	Coil resistance at 20°C	Ordering code	DU				Price each
				Pcs	DU+	100+	500+	
<b>machine-soldering proof, contact material AgCdO</b>								
12	8,4 ... 22,8	330 ± 10 %	RP110012	25				
24	16,8 ... 45,6	1200 ± 15 %	RP110024	25				
48	33,6 ... 91,2	4700 ± 15 %	RP110048	25				<b>NEW</b>
<b>machine-soldering proof, contact material AgNi 0,15</b>								
12	8,4 ... 22,8	330 ± 10 %	RP111012	25				
24	16,8 ... 45,6	1200 ± 15 %	RP111024	25				<b>NEW</b>
<b>immersion cleanable, contact material AgCdO</b>								
12	8,4 ... 22,8	330 ± 10 %	RP610012	25				
24	16,8 ... 45,6	1200 ± 15 %	RP610024	25				<b>NEW</b>
<b>immersion cleanable, contact material AgNi 0,15</b>								
24	16,8 ... 45,6	1200 ± 15 %	RP611024	25				

Packing units 25/100 pieces

# RP I PCB Relays Accessories

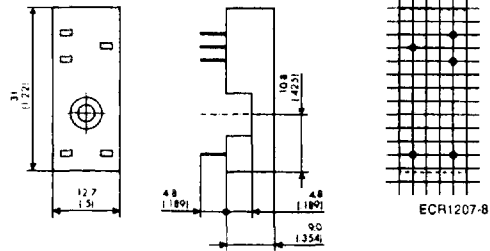
## Socket with screw terminals RP78623

snap mounting on DIN rail  
Pinning 2,5 mm



## Socket with PCB mounting terminals RP78600

Pinning 2,5 mm



Accessories	Ordering code	DU	Price each			
		Pcs	DU+	100	500	2000
Socket with screw terminals. for DIN rail mounting	RP78623	20				
Retainer/ejector clip for RP78623	RP16104	20				
Diode-, LED- and RC module, marking plate	refer to RP II Accessories, page 79					
Socket with PCB mounting terminals	RP78600	100				
Plastic retaining clip for RP78600	RP16100	100				
Metal retaining clip for RP78600	RP28500	100				<b>NEW</b>