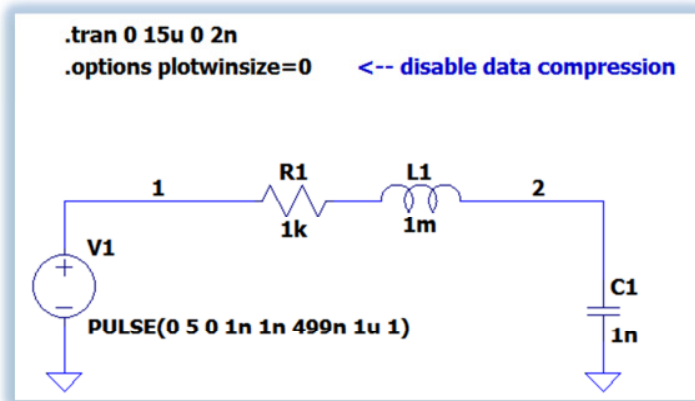
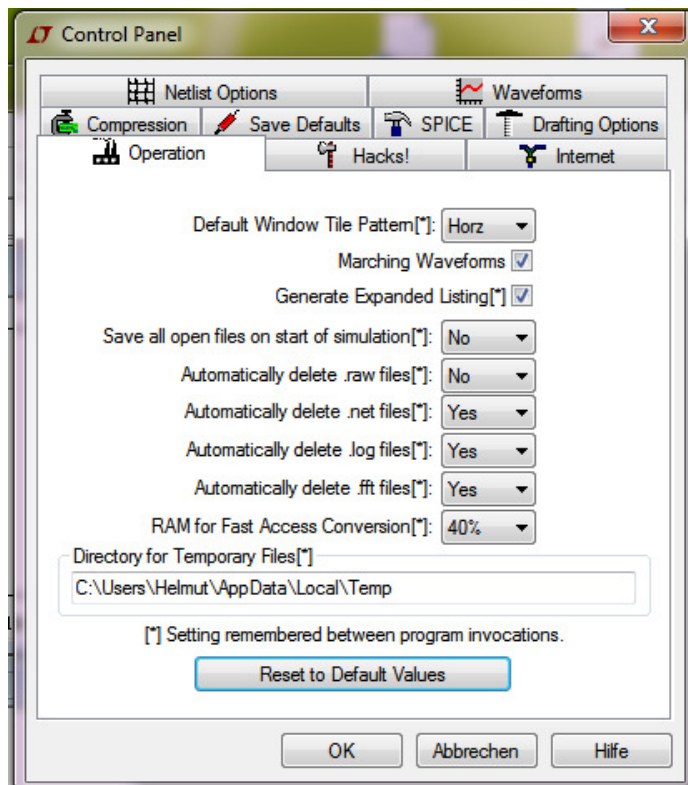


How To Make a PWL-File

Disable data compression to avoid loss of precision.



Tools -> Control Panel -> Auto. Delete .raw files(*) No



Run the simulation.

Copy ltsputil.exe into the folder of the test.raw file.

Open a cmd-window. 

Sample the raw file with equal time steps.

The result file can be viewed with the waveform viewer of LTspice for a check.

`ltsputil -eo test_eq.raw test_pwl.txt %16.9 " " time V(2)`

```
D:\_LTspice\6000\6067 ltsputil>ltsputil -eo test.raw test_eq.raw 1201 0 12e-6
Ltsputil.exe: LTspiceIV/SwitcherCADIII utility version 2.95a
EQUALIZE<INTERPOLATE> SIMULATION STEPS
X-axis      start: 0.000000e+000      X-axis      end: 1.500000e-005
X-axis eq.  start: 0.000000e+000      X-axis eq.  end: 1.200000e-005
X-axis      sweeps: 1
7543 points equalized<interpolated> to 1201 points.
OK
```

Extract a text file.

The result file is a text file. It can be used as a PWL-file with (LT)SPICE or it can be used with any other program.

`ltsputil -xo0 test_eq.raw test_pwl.txt %16.9e " " "" time V(2)`

```
D:\_LTspice\6000\6067 ltsputil>ltsputil -xo0 test_eq.raw test_pwl.txt %16.9e " " "" time V(2)
Ltsputil.exe: LTspiceIV/SwitcherCADIII utility version 2.95a
EXPORTING DATA FROM RAW FILE
X-axis sweeps: 1
2 variables with 1201 simulation points exported.
OK
```

Excerpt from the text file:

```
0.0000000000e+000 0.0000000000e+000
1.0000000000e-008 2.325441747e-004
2.0000000000e-008 9.520348976e-004
3.0000000000e-008 2.161775250e-003
4.0000000000e-008 3.856766969e-003
5.0000000000e-008 6.032012869e-003
```