

# 公司简介

## Enterprise Introduction

我們祇制造精品  
WE JUST MADE PERFECT PRODUCTS!



西普电子科技有限公司是一家集科工贸于一体的技术型企业，长期致力于国内外品牌按钮开关企业配套服务。厂房面积近3000平方米。公司现有员工150余人，其中技术人员50人从事产品研发、模具制作。主导产品有：金属防水按钮开关、金属防水信号灯、防爆开关及配件等，产品广泛应用于家用电器、机床电器及其它工业自动化设备，军工领域等。远销日本、新加坡、台湾、韩国、印度、欧洲等几十个国家和地区。

质量是企业的生命线。公司已通过了质量体系认证、环境体系认证；产品获得TUV认证，CE认证证书。公司产品生产全面实现ERP管理，拥有国内行业堪称一流的车床加工中心，所生产的金属开关独树一帜，在国内外具有较高的知名度和美誉度。

公司坚持“以人为本”的现代企业管理思想，注重为员工提供实现人生理想和个人价值的宽松工作平台和发展空间。恪守“品质、品牌、品位”的高要求，在专业领域里实现客户的梦想。

面对WTO带来的新一轮机遇与挑战，公司将继续秉持“不断进取，永不满足”的经营宗旨，加强与各大科研机构的良好合作，凭借技术厚势，力争发展成为国内专业性最强、高品质的工控按钮开关企业之一。竭诚与社会各界人士共创西普美好明天！

CMP electrical CO.,LTD is a Science and Technology Industry factory,we always dedicated to supply the best service to domestic and international famous relay company.The factory own around 3000 squarmeter, there are more than 150 workers,30% of them are technical engineer who work for new product R&D and ooling making.Our major product Metal Waterproof Push Button Switch,Metal Waterproof Signal Lamp, Explosion Proof Switch and accessories and all the product are widely used for electric appliance,machine and industrial auto-mation equipment, Military field,which has sold to Korea,America,brazil,europe countires and area.

Quality is the first important factor in the enterprise.Our factory complied with product have got CSA,TUV,VDE, CE approvals.Moreover the product completely adopt ERP manage system,to control every step of production.CMP have very advanced lathe processing center,there for enjoys a sound reputation for its quality products and outstanding performance.

Companies adhere to the "people-oriented" modern enterprise management ideas, pay attention to provide their employees with the realization of the ideal life and personal values of the liberal platform and development space. Adhere to the "quality, brand, taste" of the high demand, in the field of professional customers realize the dream of.

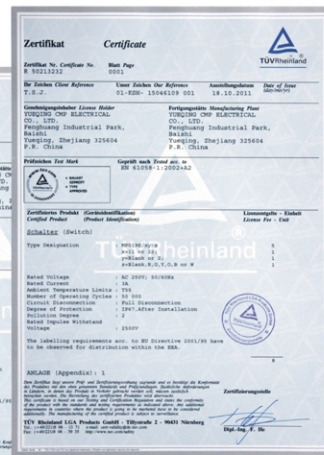
WTO face another round of opportunities and challenges, the company will continue to uphold the "constant progress, never satisfied" business purposes, with the major scientific research institutions of good cooperation, by virtue of the technical influence, and strive to develop into a domestic most professional, high-quality industrial enterprises of the button switch. Wholeheartedly with the community to create a beautiful tomorrow of CMP!



# 资质证书 Qualification Certificates

我們祇制造精品  
WE JUST MADE PERFECT PRODUCTS!

精益求精，追求完美品質，優質高效  
引領綠色未來，持續改進，超越顧客期望  
quality policy: wonderful strive and pursuit can realize  
perfect quality; superior quality and high efficiency will  
bring green power to life; constant innovation must  
surpass the customers' expectations





# C 目錄 Contents



我們祇制造精品  
WE JUST MADE PROFECT PRODUCTS!

**P2-P10**

金属信号灯  
Metal Signal Lamp

CE TÜV Rheinland

**CMP** MQ Series

**P11-P13**

金属按钮开关  
Metal Push Button Switch

CE TÜV Rheinland

**CMP** MP12 Series

**P14-P21**

金属按钮开关  
Metal Push Button Switch

CE TÜV Rheinland

**CMP** MP16 Series

**P22-P28**

金属按钮开关  
Metal Push Button Switch

CE TÜV Rheinland

**CMP** MP19 Series

**P29-P32**

金属按钮开关  
Metal Push Button Switch

CE TÜV Rheinland

**CMP** MU22 Series

**P33-P37**

金属按钮开关  
Metal Push Button Switch

CE TÜV Rheinland

**CMP** MP22 Series

**P39-P40**

金属按钮开关  
Metal Push Button Switch

CE TÜV Rheinland

**CMP** MP25 Series

**P41-P43**

金属按钮开关  
Metal Push Button Switch

CE TÜV Rheinland

**CMP** MP28 Series

**P44-P46**

金属按钮开关  
Metal Push Button Switch

CE TÜV Rheinland

**CMP** MP30 Series

**P47-P48**

高强度防水壓力開關  
High Strength Waterproof Pressure Switch

CE TÜV Rheinland

**CMP** MA Series

**P49**

急停按钮  
Stop Button

CE TÜV Rheinland

**CMP** MF Series

**P50**

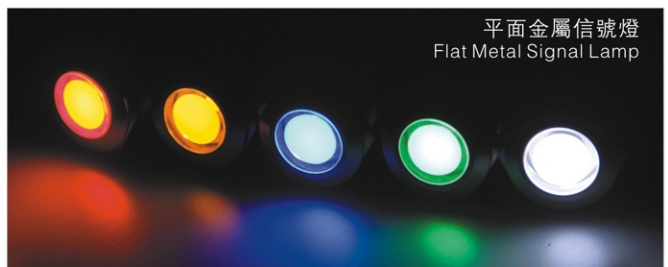
金属防爆开关  
Metal Signal Lamp

CE TÜV Rheinland

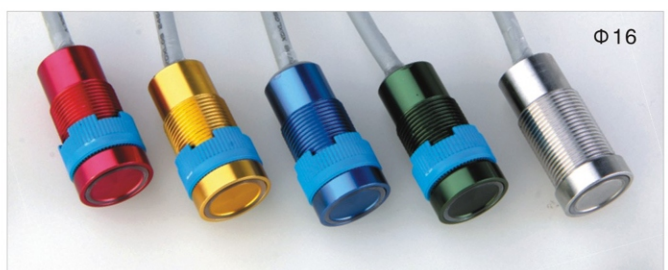
**CMP** M70 Series



>> 發光體的效果圖 Luminous Effect



>> 顏色外殼效果圖 Color Shell Effect Chart


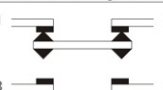




### >> 型號說明 Metal Push Button Switch

<b>頭部釋義</b> Head Type	F/平面 T/斜面 C/凹凸 H/高頭 B/球面 E/環形燈 D/中心燈 F/Flat T/Inclined C/Concave H/High B/Ball E/Ring lamp D/Center lamp	<b>燈珠顏色</b> LED Color	R G Y O B W	<b>帶燈電壓</b> LED Voltage	3V/6V/12V/24V/ 36V/48V/110V/ 220V
<b>外殼材料</b> Material	N/黃銅鍍鉻 A/鋅合金鍍鉻 S/不銹鋼 N/Chromium plated brass A/Zinc alloy plated chromium S/Stainless steel	<b>接線方式</b> Mode of connection	J/焊接式(1NO) 10/接線柱(1NO) 11/單刀(1NO,1NC) 22/雙刀(2NO,2NC) J/Pin terminal(1NO) 10/Wiring terminal(1NO) 11/Single pole(1NO,1NC) 22/Double knife(2NO,2NC)		
<b>操作類型</b> Operation	無字母表示自復 Z:自鎖 X:旋鈕 Y:鑰匙鈕 TS:急停鈕 M:蜂鳴 SM:閃光蜂鳴 No letter momentary Z:alternate X:selector Y:key lock switch TS:emergency push button M:buzzer SM:flash with buzzer				

### >> 開關結構說明 Switching Operation

型式Type	符號Sign	示意圖Diagram	說明Explanation
No.2			具有四個端子的雙斷電快動轉換觸頭開關 Using four terminals, double-break and fast-motion change-over contact.

### >> 相關認證Related certification


符合IEC60947-5-1 GB14048.5標準 Conform to IEC60947-5-1 GB14048.5 Standard	
--------------------------------------------------------------------------------	-------------------------------------------------------------------------------------

### >> 開關結構說明 Switching Operation

額定絕緣電壓Rated insulation voltage	250					
發熱電流Heating current I <sub>th</sub>	3A溫度不超過最大額定值所允許的電流Temperature does not exceed the maximum allowed current					
額定使用電壓 Rated voltage	12V	24V	110V	220V		
額定使用電流 Rated current	交流AC 50/60Hz	電阻性負載Resistive load	-	5A	3A	
		電感性負載Inductive load	-	3A	2A	
	直流DC	電感性負載Inductive load	5A	5A	1A	0.5A
		電感性負載Inductive load	2A	2A	0.2A	0.1A
觸點材料Contact material	銀鍍金Silver Plated Gold					

最小適應負載:3V AC/DC 5mA(參考值)  
(可使用範圍取決于使用環境和負載種類)

### >> 燈珠規格 Lamp Ratings

燈珠類型Lamp Type	雙向LED燈珠(交直流通用) LED lamp(AC/DC)		燈珠等效電路 Lamp Circuit diagram	
額定電壓Rated Voltage	3V, 6V, 12V, 24V, 36V, 110V, 220VAC/DC			
額定電流Rated Current	約15mA 約2mA	About 15mA About 2mA		
發光顏色LED Color	R G Y O B W			
壽命Life	4000小時(參考值)	40000 hours(Reference)		

內置電阻; 採用6V燈珠, 需外接電阻。  
採用交直流通用的LED燈珠, 接線端子無正負極區分; 60V以下燈珠已內置保護電阻;  
Using AC/DC LED lamp, the terminals have no difference of anode and cathode;  
Using inner resistance for the lamp below 60V. Using 6V lamp when the lamp voltage is above 60V, and need connect outer dropping resistance.

注: 如需單向直流LED燈珠可定做; 其他電壓規格可按需求定做。  
DC LED and other voltage can be made to order.

### >> 按鈕效果圖Button effect chart

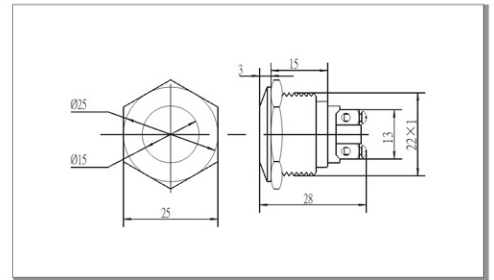




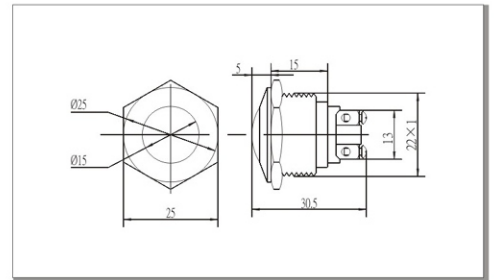
### >> Φ22金屬按鈕開關 Metal Push Button Switch



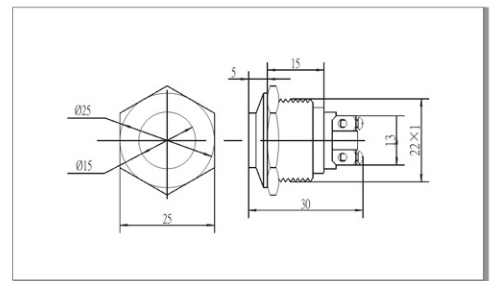
安裝尺寸Diameter: Φ22mm  
開關額定值Switch Rating: 5A/250VAC  
開關組合  
Contact Configuration: 1NO(可定制1NC)  
1NO (Made to order 1NC)  
操作類型Operation Type: 自復型Momentary  
頭部形狀The Front Shape: 平面 Flat  
外殼材料  
The Crust Material: 不銹鋼Stainless steel  
防護等級IP Degree: IP67, IK10



安裝尺寸Diameter: Φ22mm  
開關額定值Switch Rating: 5A/250VAC  
開關組合  
Contact Configuration: 1NO(可定制1NC)  
1NO (Made to order 1NC)  
操作類型Operation Type: 自復型Momentary  
頭部形狀The Front Shape: 球面 Ball  
外殼材料  
The Crust Material: 不銹鋼Stainless steel  
防護等級IP Degree: IP67, IK10



安裝尺寸Diameter: Φ22mm  
開關額定值Switch Rating: 5A/250VAC  
開關組合  
Contact Configuration: 1NO(可定制1NC)  
1NO (Made to order 1NC)  
操作類型Operation Type: 自復型Momentary  
頭部形狀The Front Shape: 高頭 High  
外殼材料  
The Crust Material: 不銹鋼Stainless steel  
防護等級IP Degree: IP67, IK10



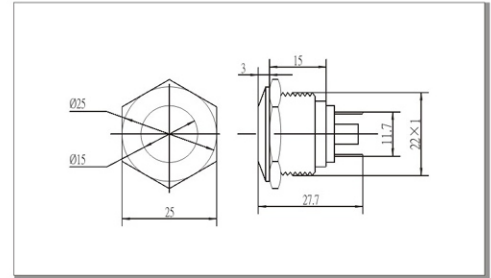
產品規格	Specification	MP22S/F10	MP22S/B10	MP22S/H10
尾部配置	Terminal Type	接线柱Wiring terminal	接线柱Wiring terminal	接线柱Wiring terminal
開關結構	Switching	NO.1	NO.1	NO.1
開關規格	Max. Switch Rating	5A/250VAC	5A/250VAC	5A/250VAC
接觸電阻	Contact Resistance	≤50mΩ	≤50mΩ	≤50mΩ
絕緣電阻	Insulation Resistance	≥1000MΩ	≥1000MΩ	≥1000MΩ
絕緣強度	Dielectric Intensity	2000VAC	2000VAC	2000VAC
環境溫度	Operating Temp	-20°C~+55°C	-20°C~+55°C	-20°C~+55°C
機械壽命	Mechanical Life	100萬次以上 1,000,000 cycles	100萬次以上 1,000,000 cycles	100萬次以上 1,000,000 cycles
電氣壽命	Electrical Life	5萬次以上50,000 cycles	5萬次以上50,000 cycles	5萬次以上50,000 cycles
面板厚度	Panel Thickness	1-6mm	1-6mm	1-6mm
螺母扭矩	Torque	5-14Nm	5-14Nm	5-14Nm
操作壓力	Operation Pressure	約5.5N About 5.5N	約5.5N About 5.5N	約5.5N About 5.5N
操作行程	Operation Travel	約2.5mm About 2.5mm	約2.5mm About 2.5mm	約2.5mm About 2.5mm
防護等級	IP Degree	IP67, IK10	IP67, IK10	IP67, IK10
材料	觸點	銀鍍金Silver Plated Gold	銀鍍金Silver Plated Gold	銀鍍金Silver Plated Gold
	按鈕	不銹鋼Stainless steel	不銹鋼Stainless steel	不銹鋼Stainless steel
	外殼	Body	不銹鋼Stainless steel	不銹鋼Stainless steel
	基座	Base	PC	PC
RohS	RohS	可定制Made to order	可定制Made to order	可定制Made to order
帶燈部分參數 LED Spec.	帶燈類型	Lamp type		
	額定電壓	Rated Voltage(Ue)		
	燈珠顏色	Color		
	燈珠壽命	Life		



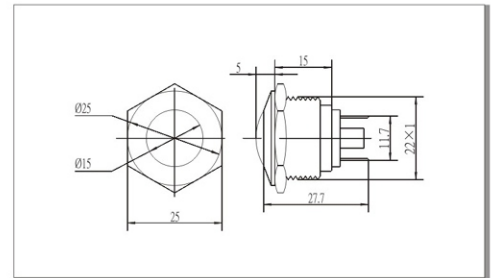
## >> Φ22金屬按鈕開關 Metal Push Button Switch



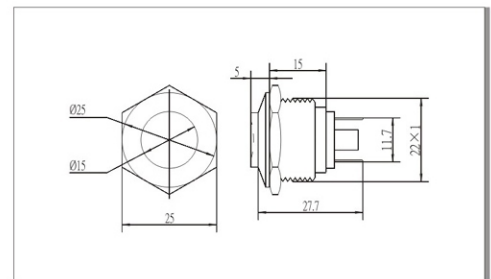
安裝尺寸Diameter: Φ22mm  
開關額定值Switch Rating: 5A/250VAC  
開關組合  
Contact Configuration: 1NO(可定制1NC)  
1NO (Made to order 1NC)  
操作類型Operation Type: 自復型Momentary  
頭部形狀The Front Shape: 平面 Flat  
外殼材料  
The Crust Material: 不銹鋼Stainless steel  
防護等級IP Degree: IP67, IK10



安裝尺寸Diameter: Φ22mm  
開關額定值Switch Rating: 5A/250VAC  
開關組合  
Contact Configuration: 1NO(可定制1NC)  
1NO (Made to order 1NC)  
操作類型Operation Type: 自復型Momentary  
頭部形狀The Front Shape: 球面 Ball  
外殼材料  
The Crust Material: 不銹鋼Stainless steel/  
防護等級IP Degree: IP67, IK10



安裝尺寸Diameter: Φ22mm  
開關額定值Switch Rating: 5A/250VAC  
開關組合  
Contact Configuration: 1NO(可定制1NC)  
1NO (Made to order 1NC)  
操作類型Operation Type: 自復型Momentary  
頭部形狀The Front Shape: 高頭 High  
外殼材料  
The Crust Material: 不銹鋼Stainless steel  
防護等級IP Degree: IP67, IK10



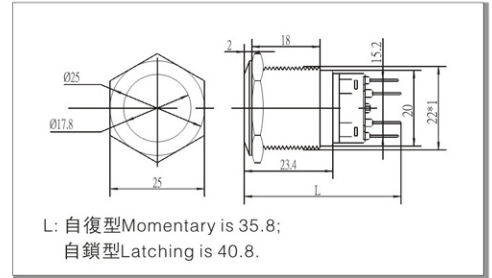
產品規格	Specification	MP22S/FJ	MP22S/BJ	MP22S/HJ
尾部配置	Terminal Type	接線插片Pin Terminal(2.8×0.5mm)	接線插片Pin Terminal(2.8×0.5mm)	接線插片Pin Terminal(2.8×0.5mm)
開關結構	Switching	NO.1	NO.1	NO.1
開關規格	Max. Switch Rating	5A/250VAC	5A/250VAC	5A/250VAC
接觸電阻	Contact Resistance	≤50mΩ	≤50mΩ	≤50mΩ
絕緣電阻	Insulation Resistance	≥1000MΩ	≥1000MΩ	≥1000MΩ
絕緣強度	Dielectric Intensity	2000VAC	2000VAC	2000VAC
環境溫度	Operating Temp	-20℃~+55℃	-20℃~+55℃	-20℃~+55℃
機械壽命	Mechanical Life	100萬次以上 1,000,000 cycles	100萬次以上 1,000,000 cycles	100萬次以上 1,000,000 cycles
電氣壽命	Electrical Life	5萬次以上50,000 cycles	5萬次以上50,000 cycles	5萬次以上50,000 cycles
面板厚度	Panel Thickness	1-6mm	1-6mm	1-6mm
螺母扭矩	Torque	5-14Nm	5-14Nm	5-14Nm
操作壓力	Operation Pressure	約5.5N About 5.5N	約5.5N About 5.5N	約5.5N About 5.5N
操作行程	Operation Travel	約2.5mm About 2.5mm	約2.5mm About 2.5mm	約2.5mm About 2.5mm
防護等級	IP Degree	IP67,IK10	IP67,IK10	IP67,IK10
材料	觸點	Contact	銀鍍金Silver Plated Gold	銀鍍金Silver Plated Gold
	按鍵	Button	不銹鋼Stainless steel	不銹鋼Stainless steel
	外殼	Body	不銹鋼Stainless steel	不銹鋼Stainless steel
	底座	Base	PC	PC
	RohS	RohS	可定制Made to order	可定制Made to order
帶燈部分參數 LED Spec.	帶燈類型	Lamp type		
	額定電壓	Rated Voltage(Ue)		
	燈珠顏色	Color		
	燈珠壽命	Life		



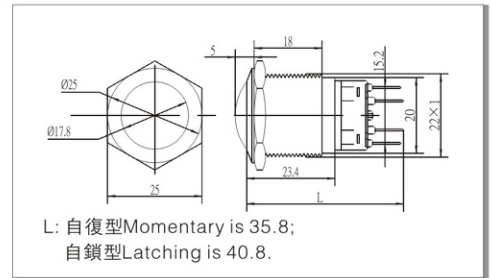
### >> Φ22金屬按鈕開關 Metal Push Button Switch



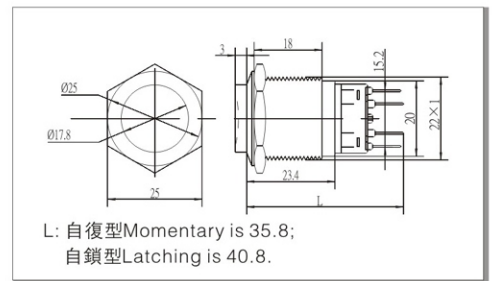
安裝尺寸Diameter: Φ22mm  
開關額定值Switch Rating: 5A/250VAC  
開關組合  
Contact Configuration: 1NO 1NC  
操作類型Operation Type: 自復型Momentary  
自鎖型Alternatewith(Z)  
頭部形狀The Front Shape: 平面 Flat  
外殼材料  
The Crust Material: 不銹鋼Stainless steel  
防護等級IP Degree: IP67, IK10



安裝尺寸Diameter: Φ22mm  
開關額定值Switch Rating: 5A/250VAC  
開關組合  
Contact Configuration: 1NO 1NC  
操作類型Operation Type: 自復型Momentary  
自鎖型Alternatewith(Z)  
頭部形狀The Front Shape: 球面 Ball  
外殼材料  
The Crust Material: 不銹鋼Stainless steel/  
防護等級IP Degree: IP67, IK08



安裝尺寸Diameter: Φ22mm  
開關額定值Switch Rating: 5A/250VAC  
開關組合  
Contact Configuration: 1NO 1NC  
操作類型Operation Type: 自復型Momentary  
自鎖型Alternatewith(Z)  
頭部形狀The Front Shape: 高頭 High  
外殼材料  
The Crust Material: 不銹鋼Stainless steel  
防護等級IP Degree: IP67, IK08



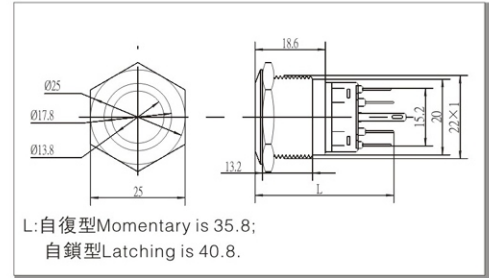
產品規格	Specification	MP022S/F11	MP022S/B11	MP022S/H11
尾部配置	Terminal Type	接線插片Pin Terminal(2.8×0.5mm)	接線插片Pin Terminal(2.8×0.5mm)	接線插片Pin Terminal(2.8×0.5mm)
開關結構	Switching	NO.2	NO.2	NO.2
開關規格	Max. Switch Rating	5A/250VAC	5A/250VAC	5A/250VAC
接觸電阻	Contact Resistance	≤50mΩ	≤50mΩ	≤50mΩ
絕緣電阻	Insulation Resistance	≥1000MΩ	≥1000MΩ	≥1000MΩ
絕緣強度	Dielectric Intensity	2000VAC	2000VAC	2000VAC
環境溫度	Operating Temp	-20°C~+55°C	-20°C~+55°C	-20°C~+55°C
機械壽命	Mechanical Life	100萬次以上 1,000,000 cycles	100萬次以上 1,000,000 cycles	100萬次以上 1,000,000 cycles
電氣壽命	Electrical Life	5萬次以上50,000 cycles	5萬次以上50,000 cycles	5萬次以上50,000 cycles
面板厚度	Panel Thickness	1-6mm	1-6mm	1-6mm
螺母扭矩	Torque	5-14Nm	5-14Nm	5-14Nm
操作壓力	Operation Pressure	約5.5N About 5.5N	約5.5N About 5.5N	約5.5N About 5.5N
操作行程	Operation Travel	約2.5mm About 2.5mm	約2.5mm About 2.5mm	約2.5mm About 2.5mm
防護等級	IP Degree	IP67, IK10	IP67, IK10	IP67, IK10
材料	觸點	Contact	銀鍍金Silver Plated Gold	銀鍍金Silver Plated Gold
	按鍵	Button	不銹鋼Stainless steel	不銹鋼Stainless steel
	外殼	Body	不銹鋼Stainless steel	不銹鋼Stainless steel
	底座	Base	PC	PC
	RohS	RohS	可定制Made to order	可定制Made to order
帶燈部分參數 LED Spec.	帶燈類型	Lamp type		
	額定電壓	Rated Voltage(Ue)		
	燈珠顏色	Color		
	燈珠壽命	Life		



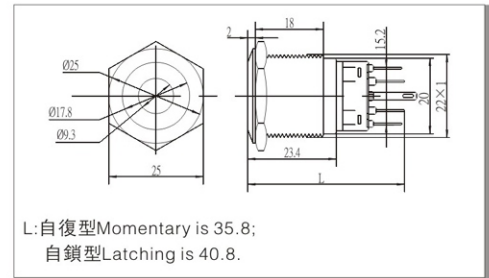
### >> Φ22金屬按鈕開關 Metal Push Button Switch



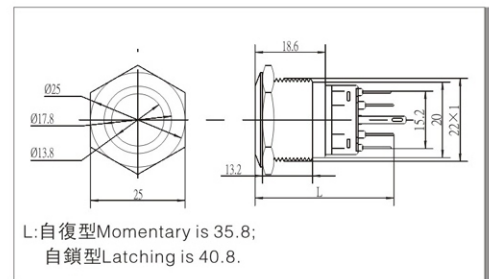
安裝尺寸Diameter: Φ22mm  
 開關額定值Switch Rating: 5A/250VAC  
 開關組合Contact Configuration: 1NO 1NC  
 操作類型Operation Type: 自復型Momentary  
 自鎖型Alternatewith(Z)  
 頭部形狀The Front Shape: 平面 Flat  
 帶燈方式Lamp type: 環形帶燈Ring Illuminated(LED)  
 外殼材料  
 The Crust Material: 不銹鋼Stainless steel  
 防護等級IP Degree: IP67, IK10



安裝尺寸Diameter: Φ22mm  
 開關額定值Switch Rating: 5A/250VAC  
 開關組合Contact Configuration: 1NO 1NC  
 操作類型Operation Type: 自復型Momentary  
 自鎖型Alternatewith(Z)  
 頭部形狀The Front Shape: 平面 Flat  
 帶燈方式Lamp type: 單點帶燈Dot Illuminated(LED)  
 外殼材料  
 The Crust Material: 不銹鋼Stainless steel  
 防護等級IP Degree: IP67, IK10



安裝尺寸Diameter: Φ22mm  
 開關額定值Switch Rating: 5A/250VAC  
 開關組合Contact Configuration: 1NO 1NC  
 操作類型Operation Type: 自復型Momentary  
 自鎖型Alternatewith(Z)  
 頭部形狀The Front Shape: 平面 Flat  
 帶燈方式Lamp type: 環形帶燈Ring Illuminated(LED)  
 外殼材料The Crust Material: 鍍金Gold-plated  
 防護等級IP Degree: IP67, IK10



產品規格	Specification	MP022S/F11-Δ▲E	MP022S/F11-Δ▲D	MP022G/F11-Δ▲E
尾部配置	Terminal Type	接線插片Pin Terminal(2.8×0.5mm)	接線插片Pin Terminal(2.8×0.5mm)	接線插片Pin Terminal(2.8×0.5mm)
開關結構	Switching	NO.2	NO.2	NO.2
開關規格	Max. Switch Rating	5A/250VAC	5A/250VAC	5A/250VAC
接觸電阻	Contact Resistance	≤50mΩ	≤50mΩ	≤50mΩ
絕緣電阻	Insulation Resistance	≥1000MΩ	≥1000MΩ	≥1000MΩ
絕緣強度	Dielectric Intensity	2000VAC	2000VAC	2000VAC
環境溫度	Operating Temp	-20℃~+55℃	-20℃~+55℃	-20℃~+55℃
機械壽命	Mechanical Life	100萬次以上 1,000,000 cycles	100萬次以上 1,000,000 cycles	100萬次以上 1,000,000 cycles
電氣壽命	Electrical Life	5萬次以上50,000 cycles	5萬次以上50,000 cycles	5萬次以上50,000 cycles
面板厚度	Panel Thickness	1-6mm	1-6mm	1-6mm
螺母扭矩	Torque	5-14Nm	5-14Nm	5-14Nm
操作壓力	Operation Pressure	約5.5N About 5.5N	約5.5N About 5.5N	約5.5N About 5.5N
操作行程	Operation Travel	約2.5mm About 2.5mm	約2.5mm About 2.5mm	約2.5mm About 2.5mm
防護等級	IP Degree	IP67, IK10	IP67, IK10	IP67, IK10
材料	觸點	Contact	銀鍍金Silver Plated Gold	銀鍍金Silver Plated Gold
	按鍵	Button	不銹鋼Stainless steel	不銹鋼Stainless steel
	外殼	Body	不銹鋼Stainless steel	不銹鋼Stainless steel
	鍍金	Body	鍍金Gold-plated	鍍金Gold-plated
帶燈部分參數	帶燈類型	Lamp type	環形帶燈Ring Illuminated(LED)	單點帶燈Dot Illuminated(LED)
	額定電壓	Rated Voltage(Ue)	6V/12V/24V/110V/220V	6V/12V/24V/110V/220V
	燈珠顏色	Color	R G Y O B W	R G Y O B W
	燈珠壽命	Life	40000小時	40000小時