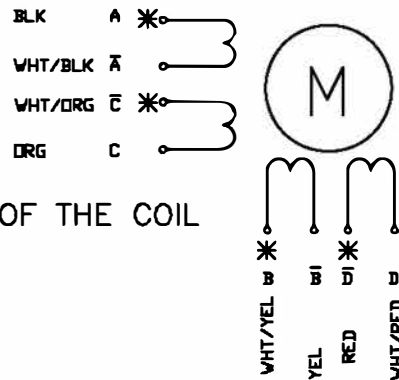


specifications:

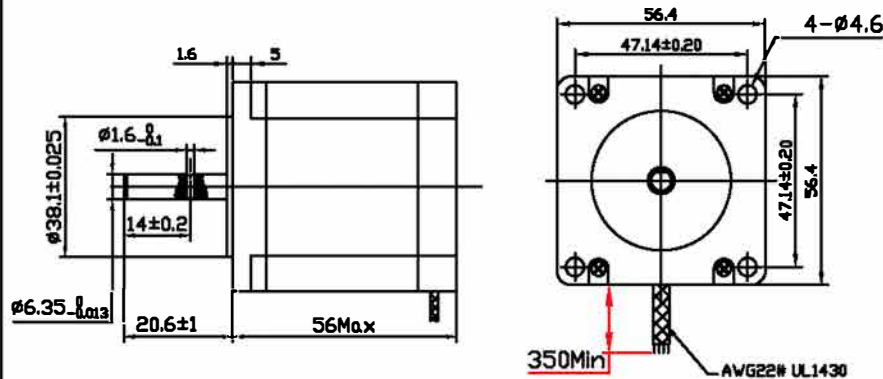
MODEL	PHASE	STEP ANGLE	RATED VOLTAGE	CURRENT /PHASE	RESISTANCE /PHASE	INDUCTANCE /PHASE	HOLDING TORQUE	DETTENT TORQUE	ROTOR INERTIA	WEIGHT
		DWG/STEP	V	A	ohms	mH	kg.cm	kg.cm	g.cm ²	Kg
UNIPOLAR	4	1.8	6.2	1.0	6.2	8.8	9.8	0.4	300	0.7

Wiring Diagram:



* START OF THE COIL

Dimension:



DESIGN	DATE	P/N
REVISION NO. DESCRIPTION	DRN APP'D DATE	TITLE: SPECIFICATION
UNLESS OTHERWISE SPECIFIED TOLERANCES:	MATERIAL	CHECK
DECIMALS: .x ±0.5		USED
ANGULAR: .xx ±0.25		ON: SVT23H56-1-A-8-0-70
.xxx ±0.1	THIRD ANGLE PROJECTION	DWG NO. FX3.162 JS
UNIT: mm	SCALE	REV
DO NOT SCALE DRAWING	SHEET DF	servo tecnica s.p.a.

SVT23H56-1-A-8-0-70 HYBRID STEPPING MOTOR

rotation:

unipolar half step unipolar full step

CW DIRECTION	STEP	A	C	B	D
↓	1	+	0	0	+
	2	+	0	0	0
	3	+	0	+	0
	4	0	0	+	0
	5	0	+	+	0
	6	0	+	0	0
	7	0	+	0	+
	8	0	0	0	+
	1	+	0	0	+

CW DIRECTION	STEP	A	C	B	D
↓	1	+	0	0	+
	2	+	0	+	0
	3	0	+	+	0
	4	0	+	0	+
	5	+	0	0	+

bipolar half step

bipolar full step

CW DIRECTION	STEP	A	B
↓	1	+	+
	2	0	+
	3	-	0
	4	-	0
	5	-	-
	6	0	-
	7	+	-
	8	+	0
	1	+	+

CW DIRECTION	STEP	A	B
↓	1	+	-
	2	+	+
	3	-	+
	4	-	-
	5	+	-