

**Service Manual  
FOR  
SPS-9600-327**

# **Contents**

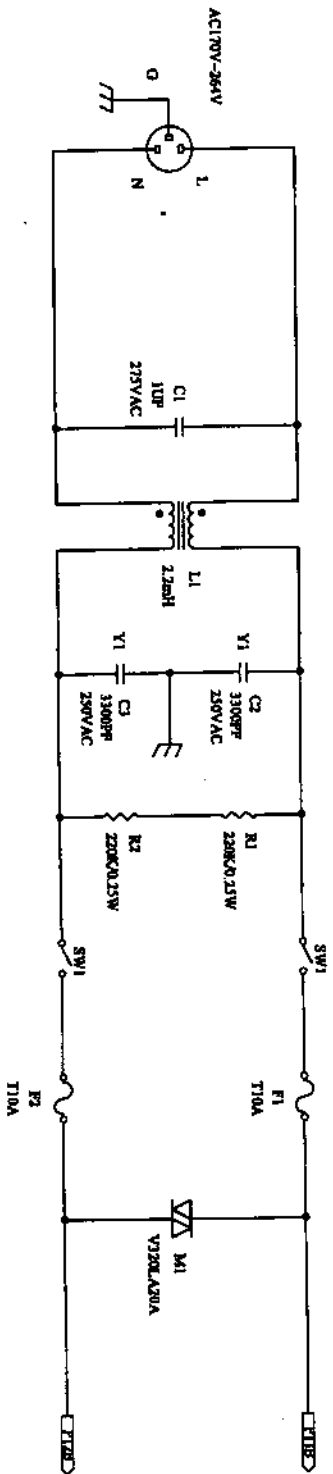
1. Product Specifications	p.1
2. Schematics	p.2-4
3. PCB Layout	p. 5
3.1DC-DC PCB	p. 5 - 8
3.2Control PCB	p. 9 - 12
3.3MPD Dual LED Panel PCB	p. 13 - 17
3.4LED Panel PCB	p. 18 - 23
3.5PFC PCB	p. 24 - 28
4. Bill of Material	p. 29 - 57

MODEL : SPS-9600-000	REV. 1.0	DATE : 30-12-2003
DESCRIPTION : INPUT 230VAC OUTPUT 1-15V 60A POWER SUPPLY		
INPUT VOLTAGE : 230 VAC	FREQUENCY : 50 Hz	
ENVIRONMENT TEMPERATURE : 25°C		

	MIN.	TYP.	MAX.	UNIT	
Input Voltage Range	170		264	Vac	
Rated Output Voltage Range	1		15	V	
Max. Output Voltage	15.1		15.7	V	
Min. Output Voltage	0.6		1.0	V	
Output Current (continue)	60			A	
Protection Current	64		67	A	
Over Voltage Protection	16.5		17.5	V	
Load Regulation(0-100%) (sense)			0.1%+5	mV	
Load Regulation(0-100%) (no sense)			0.1%+5	mV	
Line Regulation (170-264V)			0.05%+3	mV	
Ripple & Noise (peak-peak)			40	mV	
No Load Input Current			0.35	Aac	
Full Load Input Current			4.7	Aac	
Power Consumption at 15V 60A			1050	W	
Efficiency(Output 15V 60A)	85.7			%	
Power Factor	97			%	
Insulation Resistance (500VDC)	100			MΩ	
Input V.S Output, Input V.S Housing					
High Pot Test (15mA 3S) Input V.S Output	3000			Vac	
High Pot Test (10mA 3S) Input V.S Housing	1500			Vac	
Meter Accuracy:	<div style="border: 1px solid black; padding: 5px; display: inline-block;">           管制文件 禁止復印         </div>				
Voltmeter				± 1%+1	Digit
Ammeter				± 1%+1	Digit

REMARKS:

- High frequency interference test (Sampling 3%)  
Test frequency: 1.437MHz(5W) 2. 144MHz(5W)
- Result : No function have been affected. Output voltage  $\leq \pm 0.5V$  variation.
- Input rush current =  $264 \times 1.414 / (R2 // R3)$

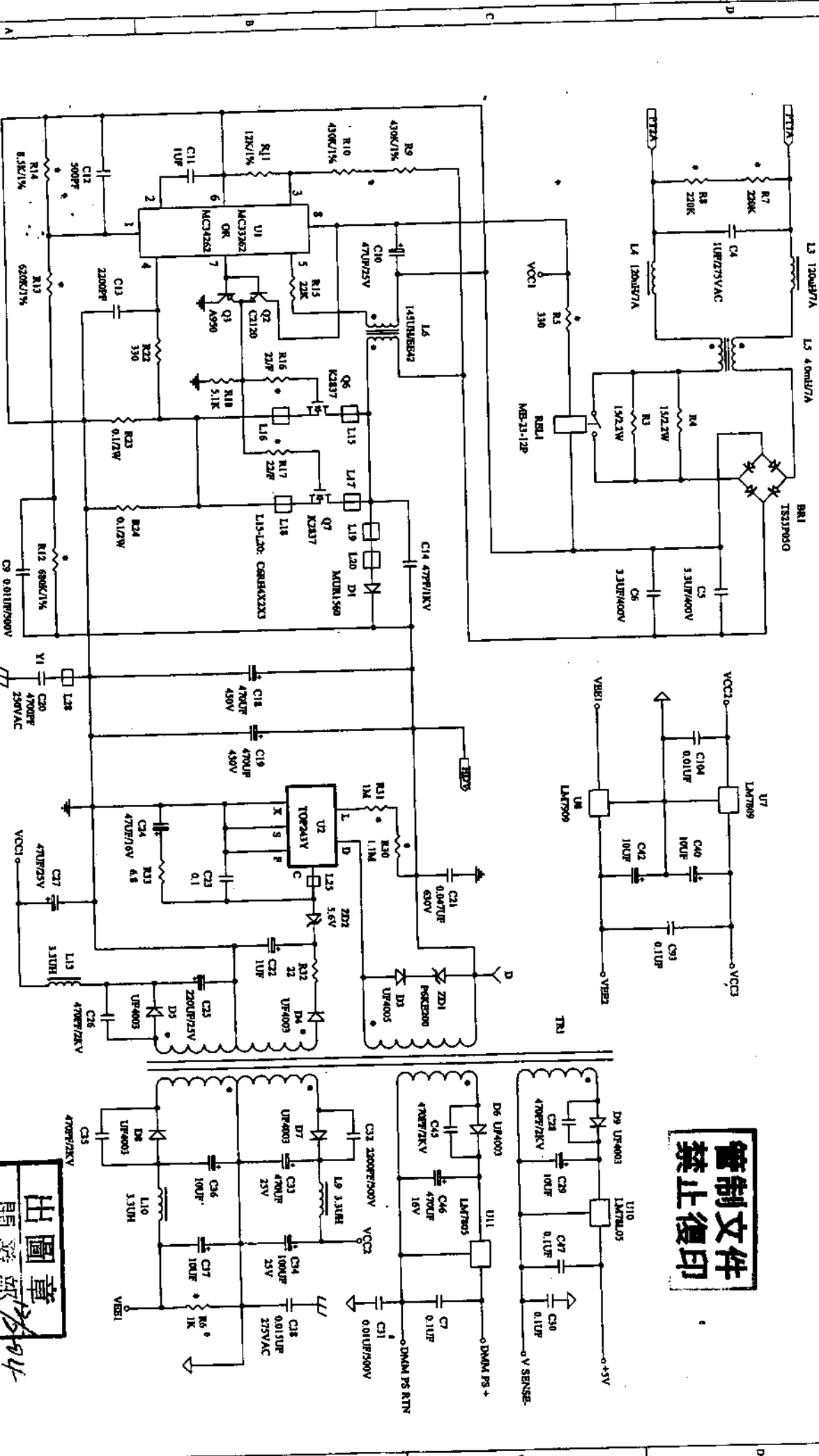


管制文件  
禁止復印

出圖章  
開發部

104

TITLE: SPS9600 AC POWER SWITCH	DWG. NO.: 9600-9600-0000	MANSON ENGINEERING INDUSTRIAL LTD.
DRAWN BY: JIANG MING	CHECKED BY: <i>[Signature]</i>	
APPROVED BY: K.K. LEUNG	SHEET 1 OF 3	REVISION: 1.1
DATE: 14-01-2004		



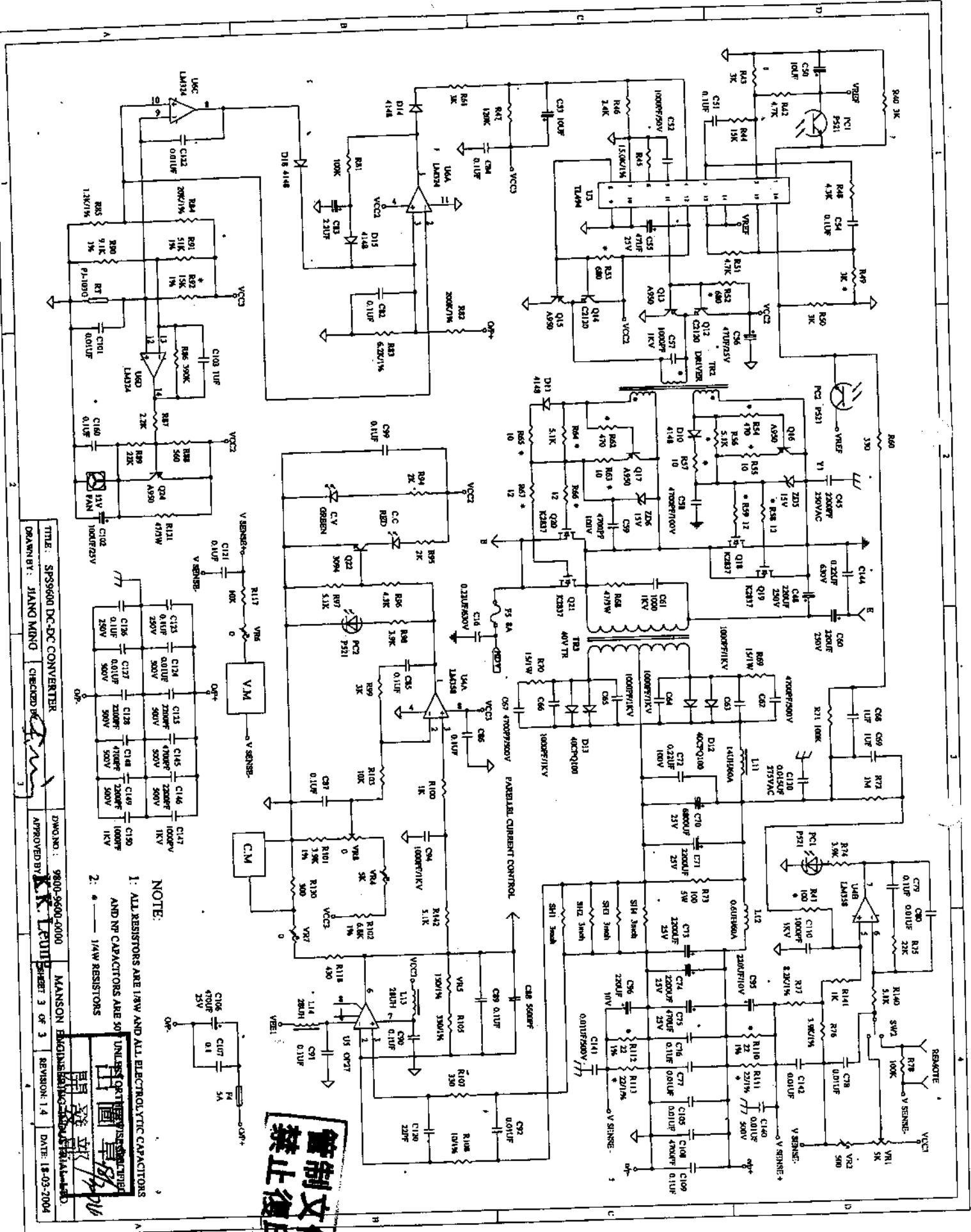
管制文件  
禁止復印

出圖章  
關發部  
11-02-2004

NOTE: 1: ALL RESISTORS ARE 1/8W AND ALL ELECTROLYTIC CAPACITORS AND NP CAPACITORS ARE 50V UNLESS OTHERWISE SPECIFIED.

2: \* — 1/4W RESISTORS

TITLE: SPS9600 PFC & AUXILIARY P.S	DWG. NO.: 9800-9600-0000	MANSON ENGINEERING INDUSTRIAL LTD.
DRAWN BY: JIANG MING	CHECKED BY: <i>[Signature]</i>	SHEET 2 OF 3
APPROVED BY: K.K. LEUNG	REVISION: 1.2	DATE: 11-02-2004

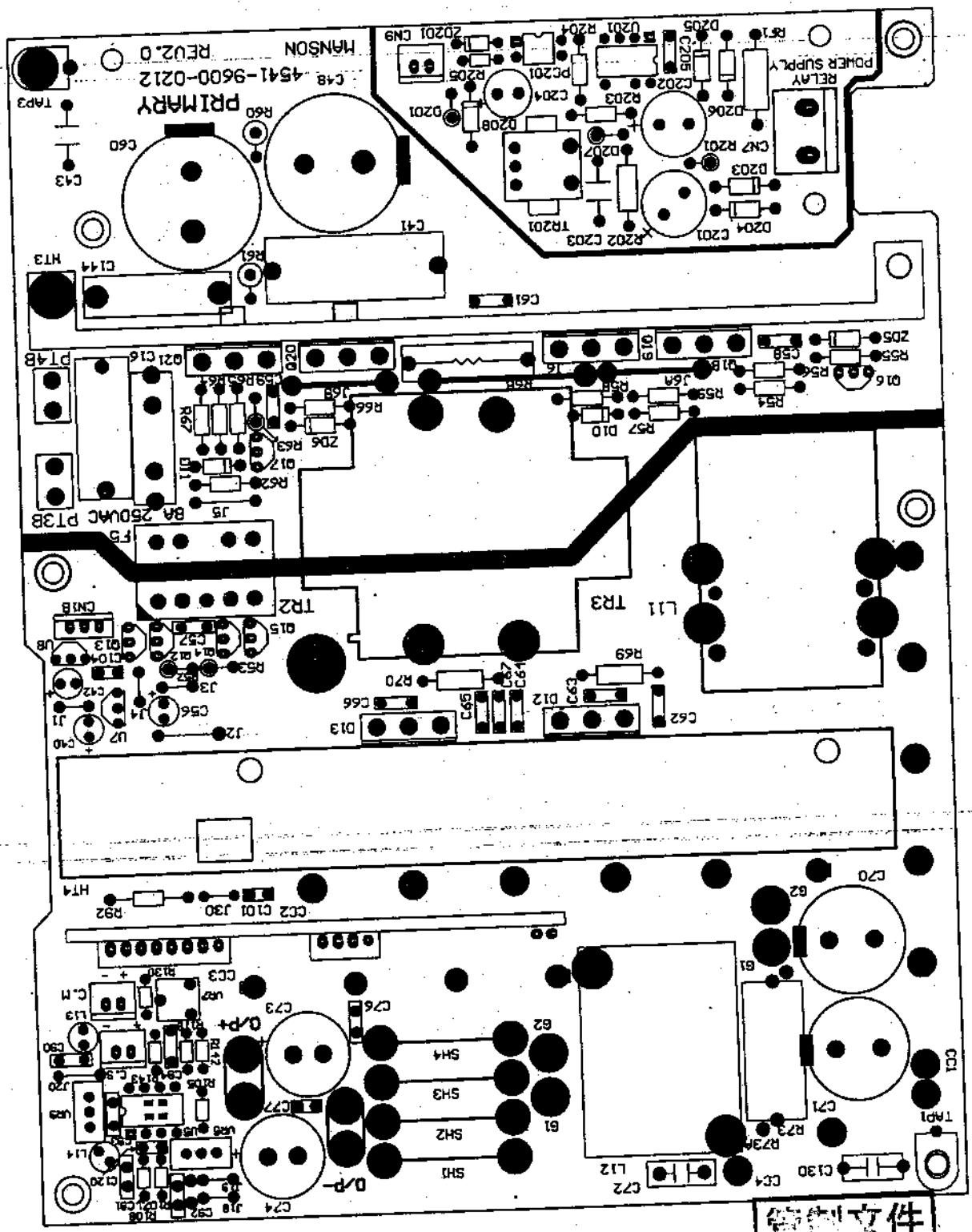


TITLE: SPS9600 DC-DC CONVERTER  
 DRAWN BY: JIANG MING  
 CHECKED BY: [Signature]  
 APPROVED BY: [Signature]  
 DIVISION: 9800-9600-0000  
 MANSON ENGINEERING CO., LTD.  
 SHEET 3 OF 3  
 REVISION: 1.4  
 DATE: 18-03-2004

NOTE:  
 1. ALL RESISTORS ARE 1/4W AND ALL ELECTROLYTIC CAPACITORS AND NP CAPACITORS ARE 50V  
 2. 1/4W RESISTORS

管制文件  
 禁止復印

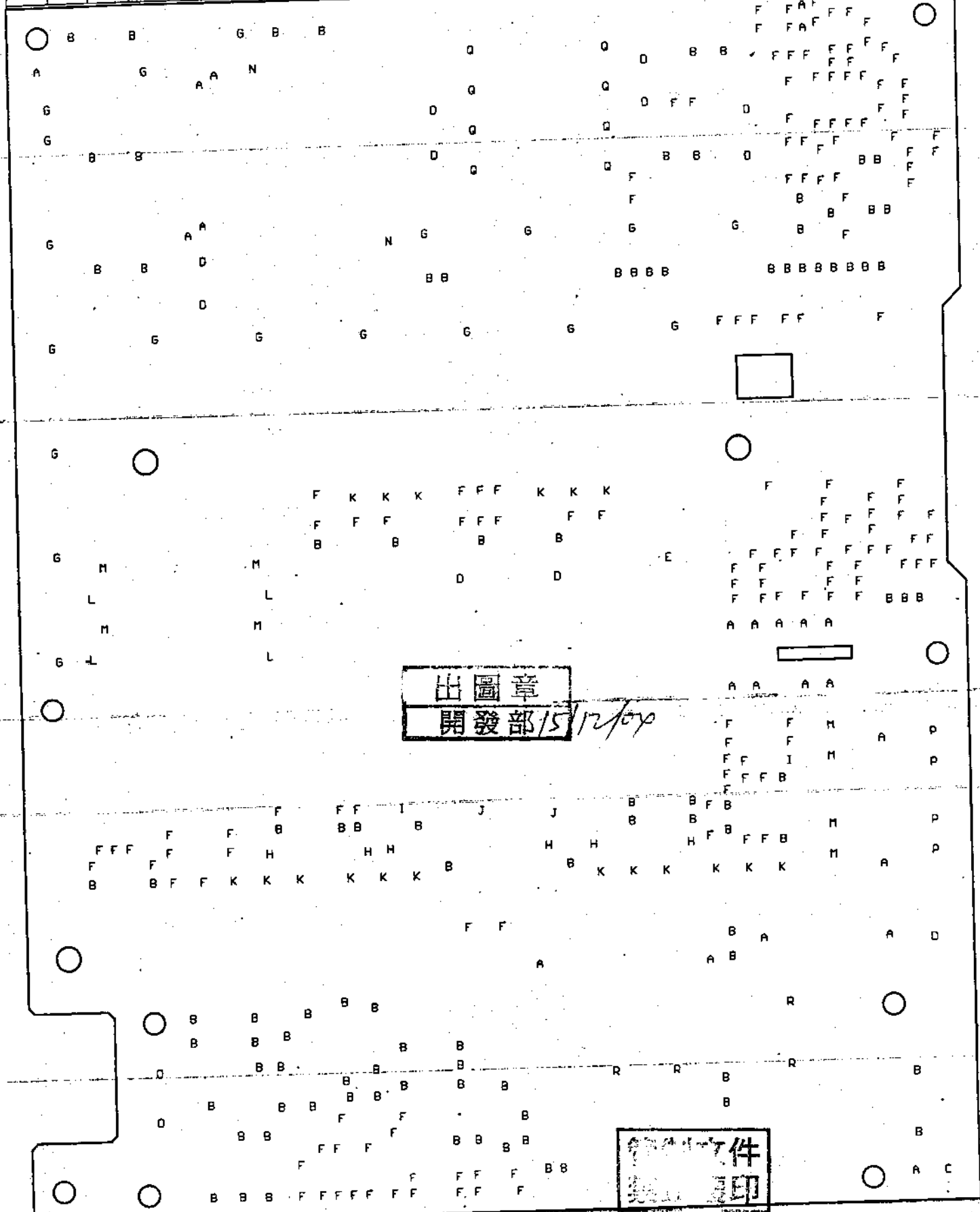
出圖章  
開發部 15/12/04



管制文件  
禁止印

SPS-9600-000 PCB TOP SILKSCREEN		PREPARED BY: 2012335	MANSON ENGINEERING IND. LTD.	
DATE: 13-12-2004	NO. 4541-9600-0212	CHECKED BY:	SHEET 1 OF 4 QTY: 4	
REV. 1.2	UNIT: mm	APPROVED BY: K.K. LO		

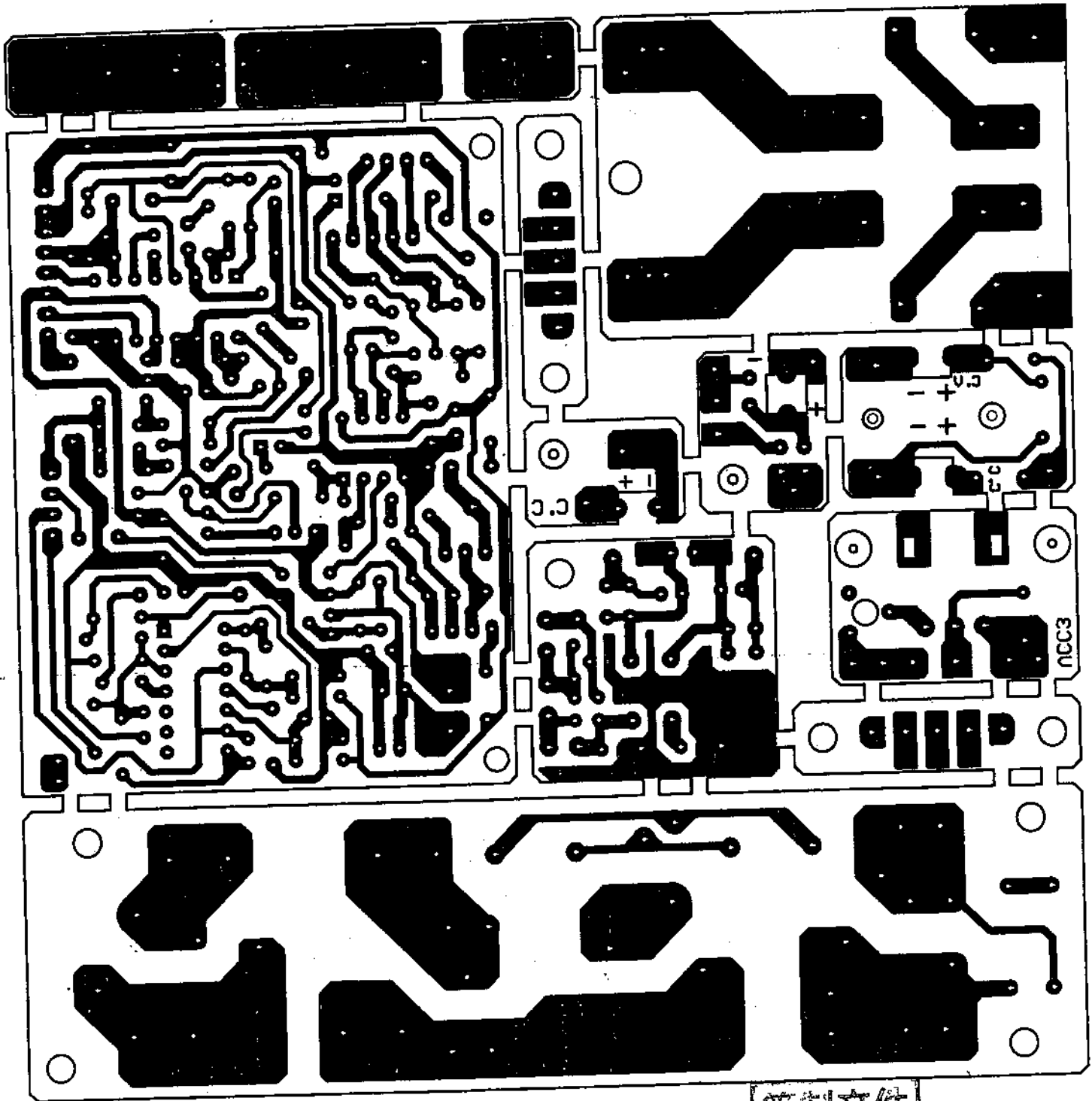
A	B	C	D	E	F	G	H	I	J	K	L	M	N	O	P	Q	R	S	T	U	Z	W	
1.2	1.0	3.5	4.0	5.4	0.8	2.6	2.1	0.762	3.2	1.6	3.3	1.5	3.8	1.8									



出圖章  
開發部 15/12/04

零件  
製印

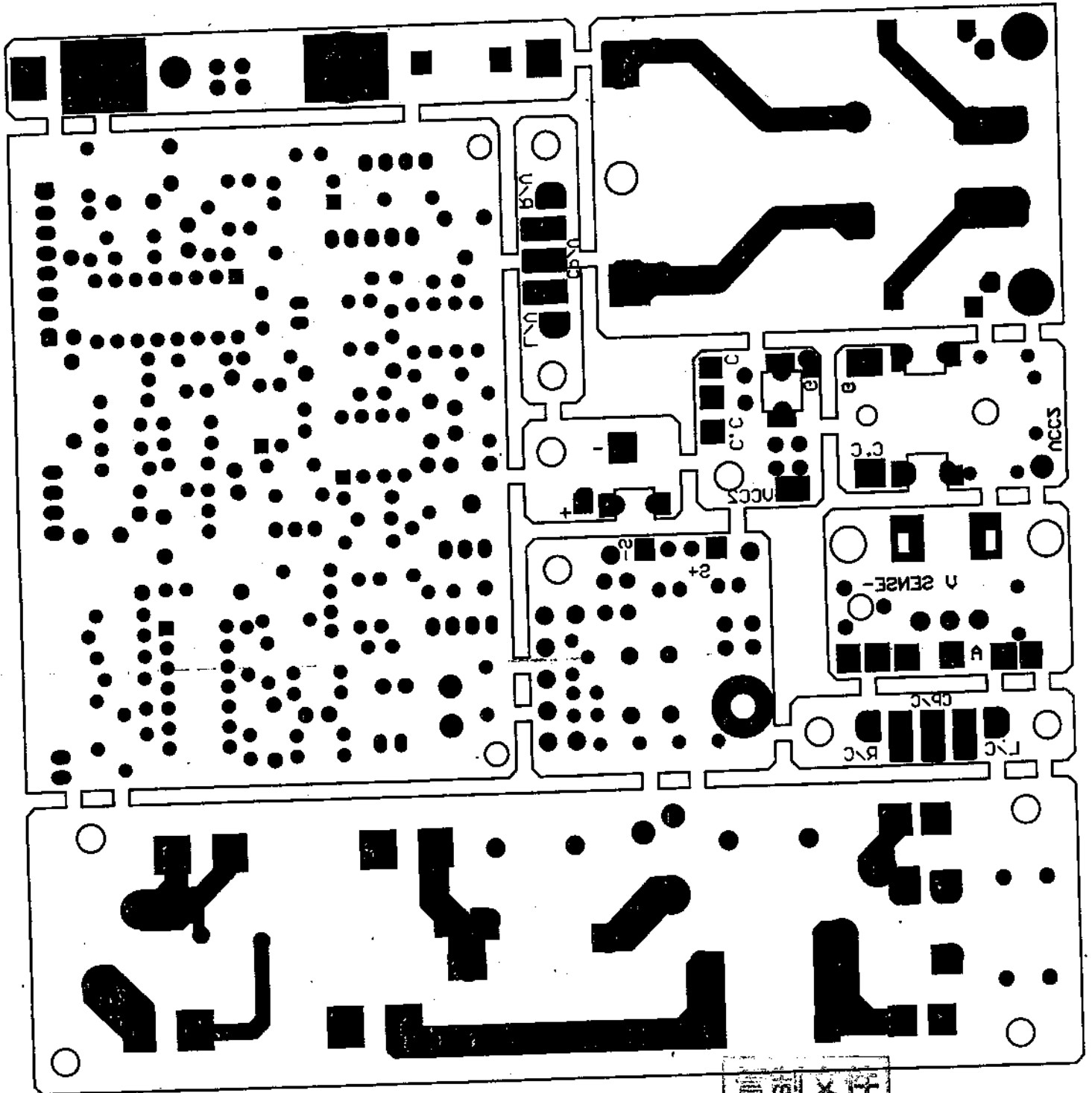




管制文件  
禁止復印

SP5-9600-000 PCB BOTTOM LAYER		PREPARED BY: 劉志輝	MANSON ENGINEERING IND. LTD.	
DATE: 26-07-2004	NO. 4541-9600-1112	CHECKED BY: [Signature]	SHEET 2 OF 4 QTY: 4	
REV. 1.1	UNIT: mm	APPROVED BY: K.K. Leung		

出圖章  
日期: 2004/7/26

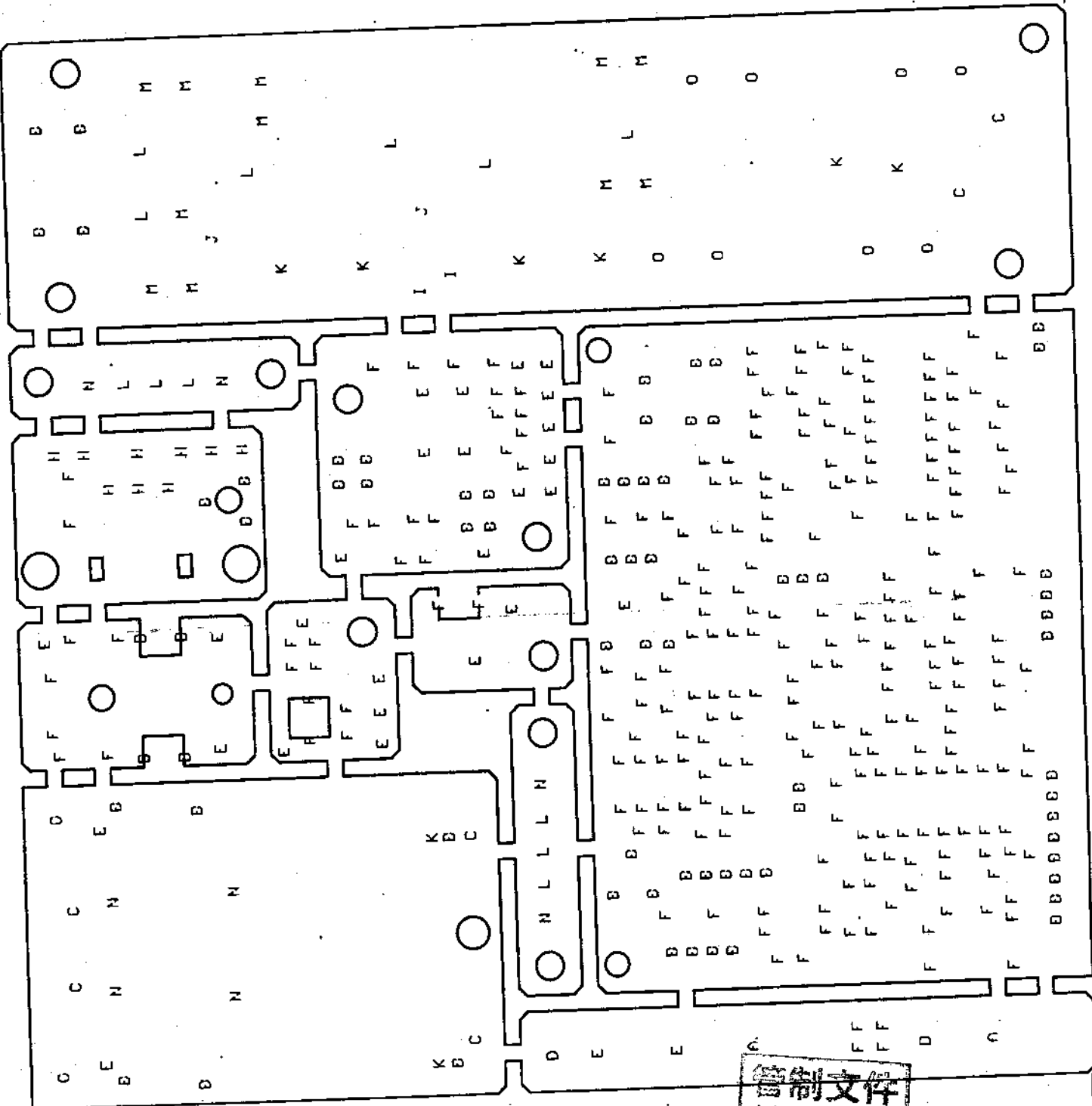


圖文文件  
禁止復印

SPS-9600-000 PCB SOLDER MASK		PREPARED BY: <i>20/2/2004</i>	MANSON ENGINEERING IND. LTD.	
DATE: 26-07-2004	NO. 4541-9600-1112	CHECKED BY: <i>[Signature]</i>	SHEET 3 OF 4 QTY: 4	
REV. 1.1	UNIT: mm	APPROVED BY: <i>[Signature]</i>		

出圖章  
請發部 20/7/04

A	B	C	D	E	F	G	H	I	J	K	L	M	N	O	P	Q	R	S	T	U	V	W	X	Y	Z	AA	
4.2	1.0	2.4	2.0	1.2	0.8	3.5	1.3	1.6	2.6	1.1	1.8	1.4	2.2	1.7													

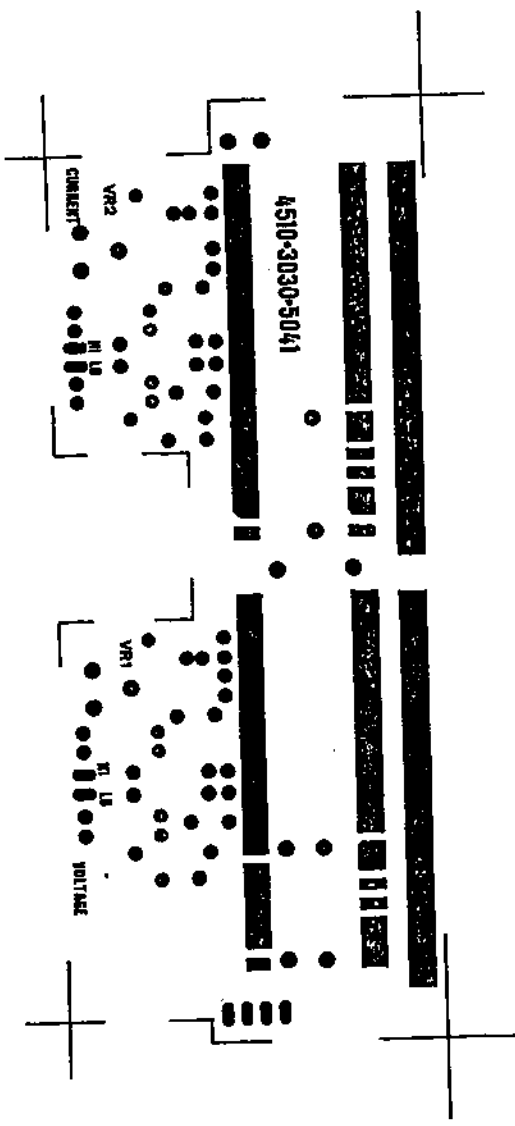


管制文件  
禁止復印

SPS-9600-000 PCB REPORT OF DRILL		PREPARED BY: 劉子林	MANSON ENGINEERING IND. LTD.	
DATE: 26-07-2004 NO. 4541-9600-1112		CHECKED BY: [Signature]	SHEET 4 OF 4 QTY: 4	
REV: 1.1	UNIT: mm	APPROVED BY: KK Leung		







MPD-SERIES DUAL LED PANEL METER A/D PCB  
 4510-3030-5041  
 SOLDER MASK  
 COPPER SIDE

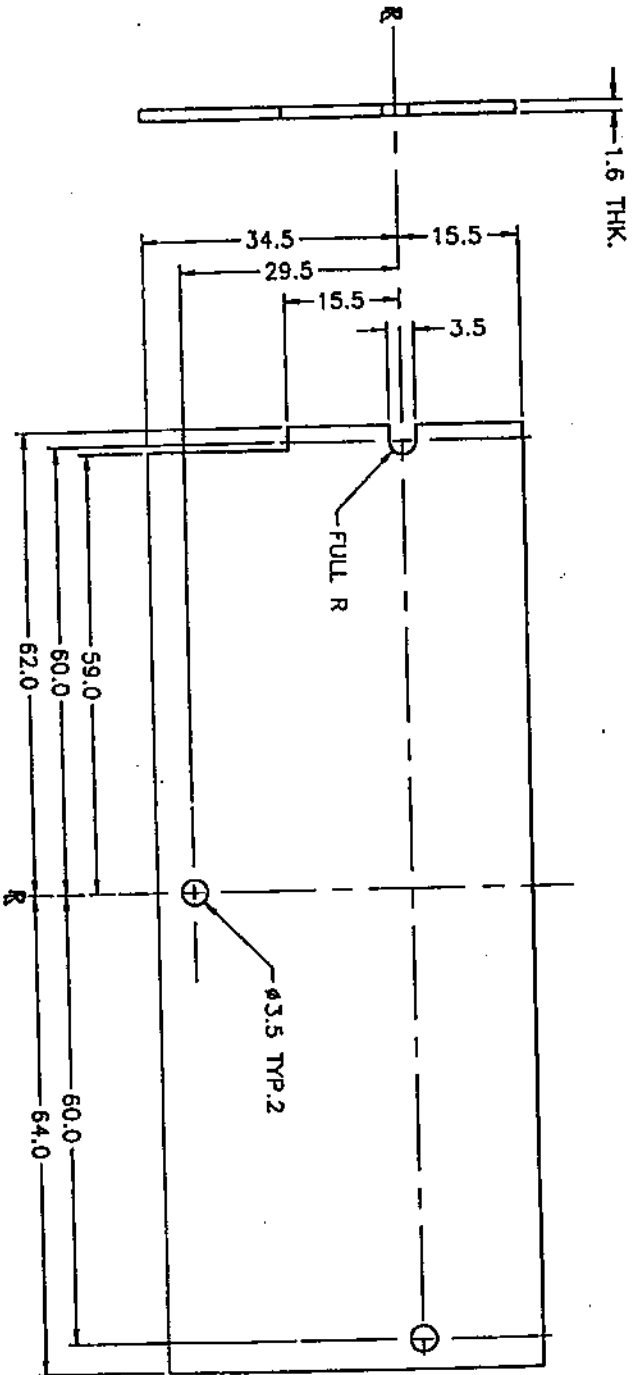
管制文件  
 禁止復印

出圖章  
 工程 部 26/10



TOLERANCES		SIGNATURE		DATE		SCALE		MODEL		MATERIAL	
DEC. PLACE .X	-0.1	DVN. BY	<i>[Signature]</i>	5-8-80	1:1	MPD SERIES	1.6mm THK. PP 9410	M/S WANSON ENGINEERING IND. LTD.		DWG. NO.	4510-3030-5041
DEC. PLACE .XX	-0.01	CHECK BY	<i>[Signature]</i>	5/10/80	A4	FILE NO.		SHEET 4 OF 5		REV.	1.1.0
DEC. PLACE .XXX	-0.005	APPR. BY	<i>[Signature]</i>	5/8/80	FINISHING	TITLE	PCB SOLDER MASK	UNIT: M/M		QTY	1
ANGULAR MEASUREMENT-ED. 5°											





• VIEW SHOWN COMPONENT SIDE

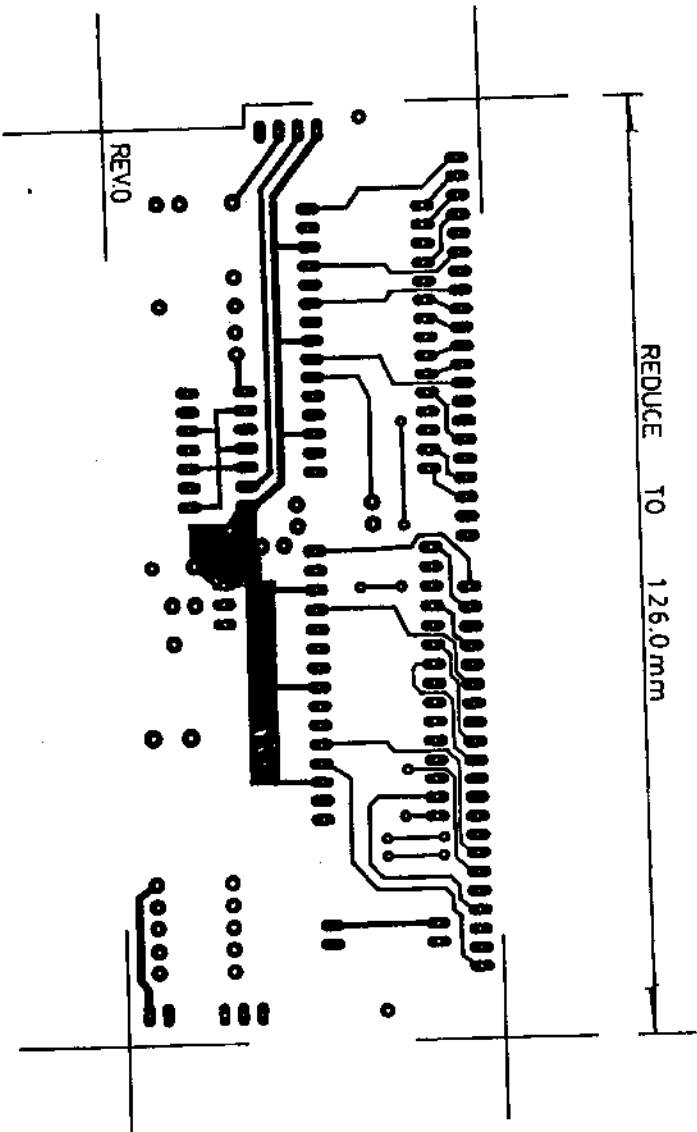
管制文件  
禁止復印

出圖章  
工程 部 25/12



TOLERANCES		SIGNATURE		DATE		SCALE		MODEL		MSE		
DEC. PLACE .X	+0.1	DVN BY	(Signature)	14-8-00	1:1	FILE NO.	OPSD PCB	MANSION ENGINEERING IND. LTD.		DWG. NO.	4943-3030-6042	
DEC. PLACE .XX	+0.01	CHECK BY	(Signature)	15/8/00	A4	TITLE	METER DISPLAY PCB	SHEET		1	OF	6
DEC. PLACE .XXX	+0.005	APPR. BY	(Signature)	15/8/00	FINISHING	MATERIAL	1.6mm THK. FR4 G406	REV.		1.0	UNIT	M/M
ANGULAR MEASUREMENT	+0.5°							QTY		1		

REDUCE TO 126.0mm



DUAL LED PANEL METER - TOP LAYER COPPER LAYOUT  
4543-3030-6042

管制文件  
禁止復印

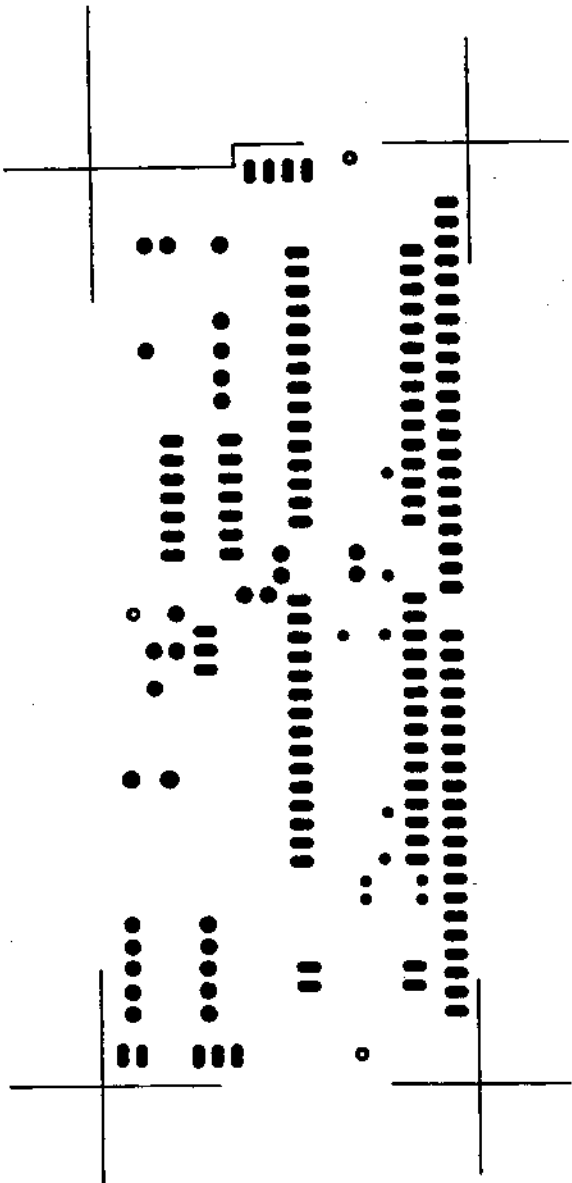
出圖章  
2/8



TOLERANCES		SIGNATURE	DATE	SCALE	MODEL	MFG MANSON ENGINEERING IND. LTD.	
DEC. PLACE .X	+0.1	DWN. BY: [Signature]	14-8-80	1:1	NP0 SERIES	DWG. NO. 4543-3030-6042	UNITS: M/M
DEC. PLACE .XX	+0.01	CHECK BY: [Signature]	15/8/80	A4	TITLE PCB COPPER SIDE	SHEET 2 OF 6	REV. 1.1.0
DEC. PLACE .XXX	+0.005	APPR. BY: [Signature]	5/8/80	FINISHING	MATERIAL 1.6mm THK FR4 94V0	QTY. 1	
ANGULAR MEASUREMENT ±0.5°							







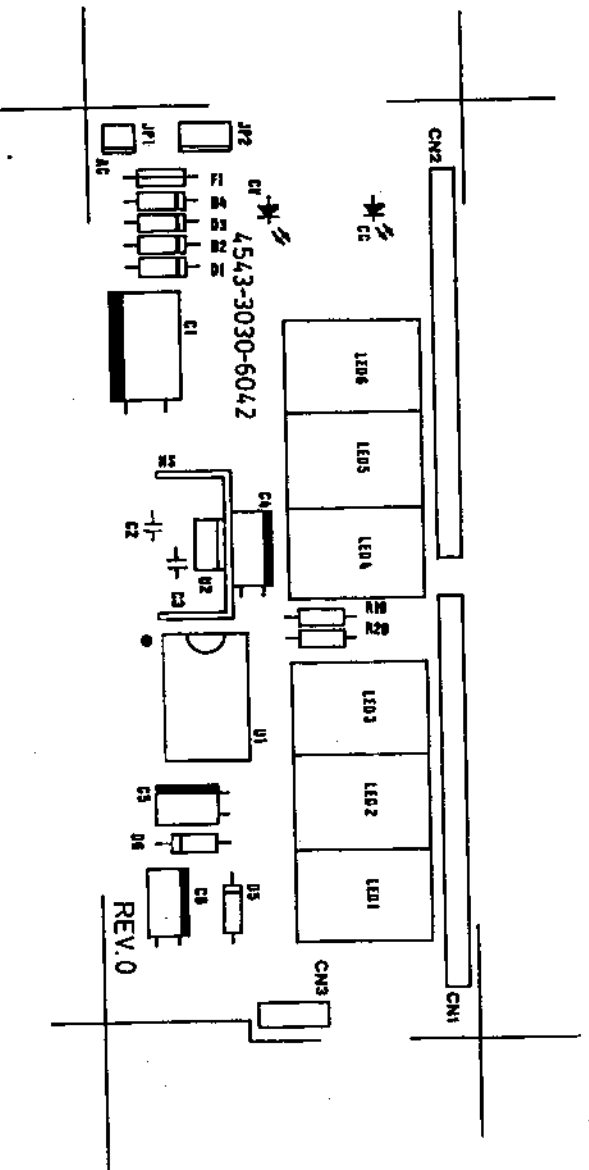
DUAL LED PANEL METER — SOLDER RESIST  
4543-3030-6042

管制文件  
禁止復印

出圖章  
工程 部 28/



TOLERANCES		SIGNATURE		DATE		SCALE		MODEL		MATERIAL	
DEC. PLACE .X	+0.1	DWN. BY	[Signature]	14-8-00	1:1	MPD SERIES	1.6mm	MPD SERIES	FR4	9410	9410
DEC. PLACE .XX	+0.01	CHECK BY	[Signature]	15/8/04	A4	FILE NO.	1.6mm	FILE NO.	FR4	9410	9410
DEC. PLACE .XXX	+0.005	APPR. BY	[Signature]	15/8/04	FINISHING	TITLE PCB	1.6mm	TITLE PCB	FR4	9410	9410
ANGULAR MEASUREMENT ±0.5°						SOLDER MASK	1.6mm	SOLDER MASK	FR4	9410	9410
				<b>MANSON ENGINEERING LTD. LTD.</b>				<b>MANSON ENGINEERING LTD. LTD.</b>			
				DWG. NO. 4543-3030-6042				DWG. NO. 4543-3030-6042			
				SHEET 4 OF 6				SHEET 4 OF 6			
				REV. 1.1.0				REV. 1.1.0			
				QTY 1				QTY 1			



DUAL LED PANEL METER — BOTTOM LAYER WHITE LEGEND  
 4543-3030-6042

TOLERANCES		SIGNATURE		DATE		SCALE		MODEL		M/P D SERIES	
DEC. PLACE .X	+0.1	DVN BY :		16-8-	1:1	FILE NO.:					
DEC. PLACE .XX	+0.01	CHECK BY :		15/8/84	A4	TITLE PCB SILK SCREEN					
DEC. PLACE .XXX	+0.005	APPR BY :		15/8/84		MATERIAL 1.6mm THK FR4 9410					
ANGULAR MEASUREMENT ±0.5°											

管制文件  
 禁止復印

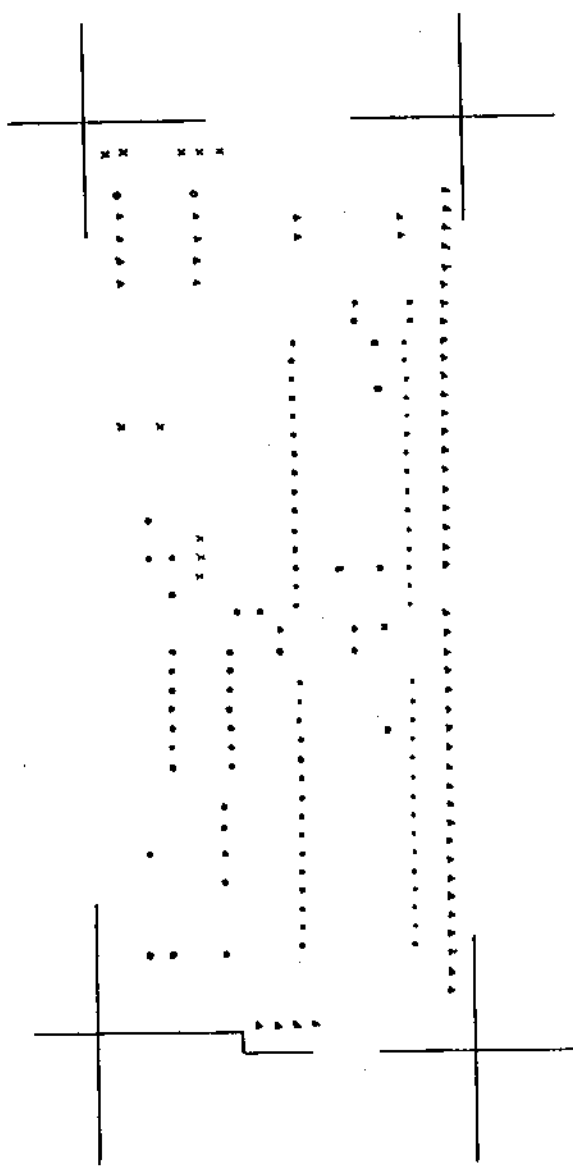
出圖章  
 工程 28/8



WANSON ENGINEERING IND. LTD.

DWG. NO. 4543-3030-6042 UNIT: M/M  
 SHEET 5 OF 6 REV. 1.0 QTY: 1

- φ0.5 mm
- φ0.7 mm
- △ φ0.9 mm
- X φ1.0 mm



4543-3030-6042 DRILL HOLE CHART

管制文件  
禁止復印

出國章  
工程 部



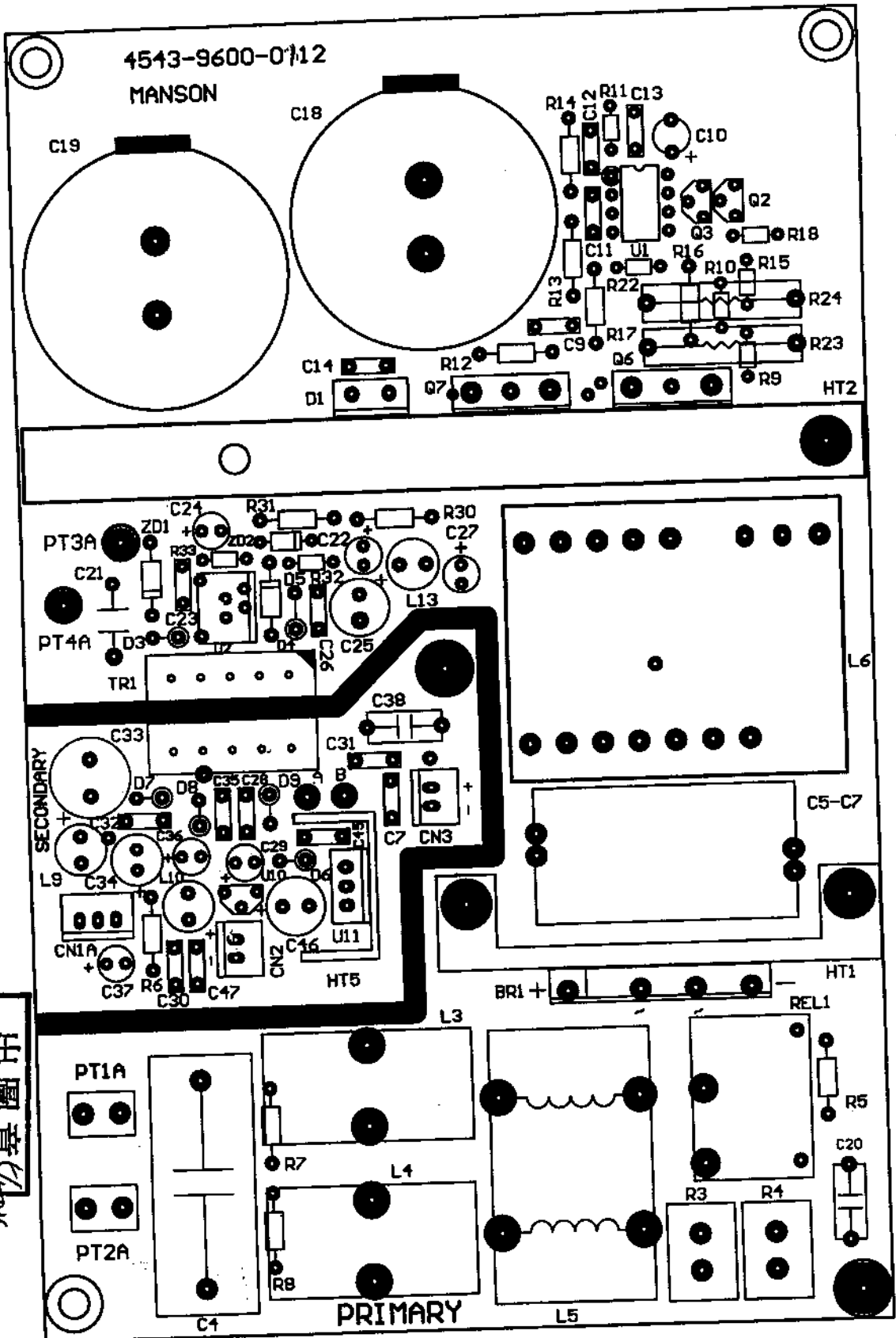
TOLERANCES		SIGNATURE		DATE		SCALE		MODEL		MPP SERIES	
DEC. PLACE .X	-0.1	DVN. BY :	<i>[Signature]</i>	8-8-00	1:1	FILE NO.:					
DEC. PLACE .XX	+0.01	CHECK BY :	<i>[Signature]</i>	15/8/25	A4	TITLE:	PCB DRILL DRAWING (A3)				
DEC. PLACE .XXX	+0.005	APPR. BY :	<i>[Signature]</i>	15/8/25	FINISHING	MATERIAL:	1.6mm THK. FR4 94VB				
ANGULAR MEASUREMENT ±0.5°											
								SHEET		REV.	
								6 OF 6		11.0	
								QTY		1	

SPS-9600-000 PCB SILKSCREEN  
 DATE: 05-01-2004 NO. 4543-9600-0112  
 REV. 1.0 UNIT: mm

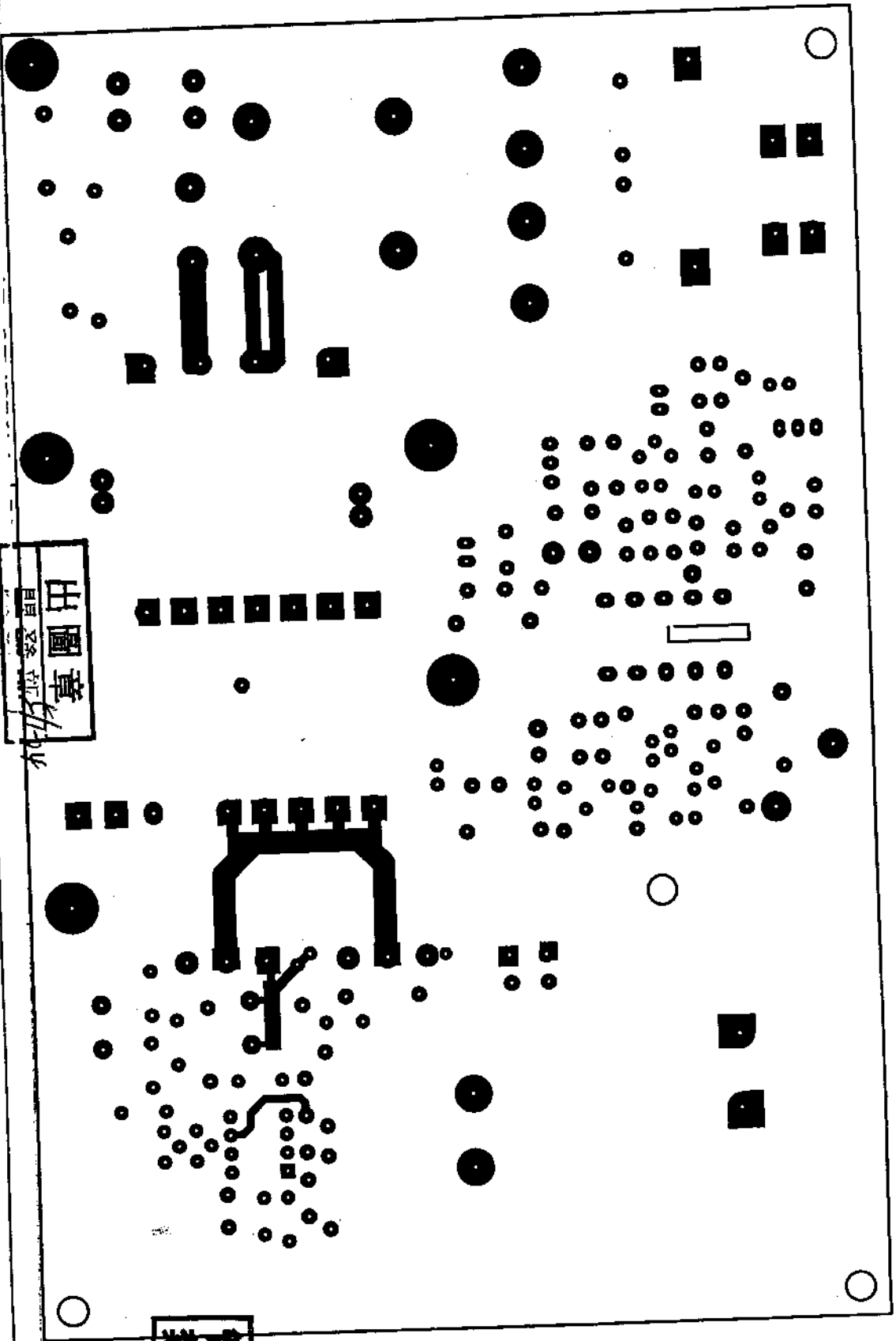
PREPARED BY: [Signature]  
 CHECKED BY: [Signature]  
 APPROVED BY: K.K. Leung

MANSON ENGINEERING IND. LTD.  
 SHEET 1 OF 4 QTY: 4

出圖章  
 日期: 5/1/04



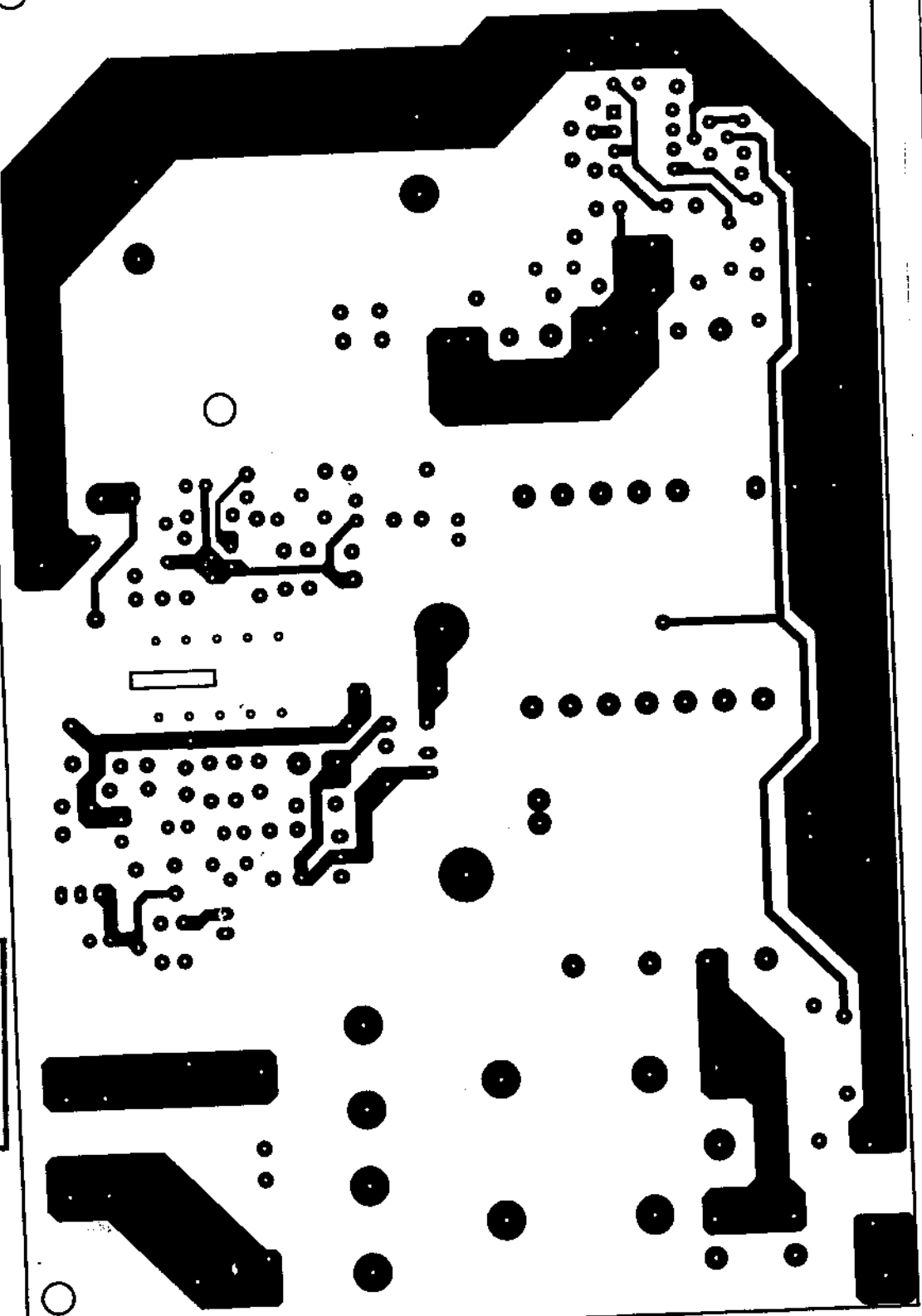
管制文件  
 禁止復印



出圖章  
 日期 2004.01.24

管制文件  
 禁止復印

SPS-9600-000 PCB SOLDER MASK	PREPARED BY: <i>[Signature]</i>	MANSON ENGINEERING IND. LTD.
DATE: 05-01-2004 NO. 4543-9600-0112	CHECKED BY: <i>[Signature]</i>	SHEET 2 OF 4 QTY: 4
REV. 1.0 UNIT: mm	APPROVED BY: <b>K.K. Leung</b>	

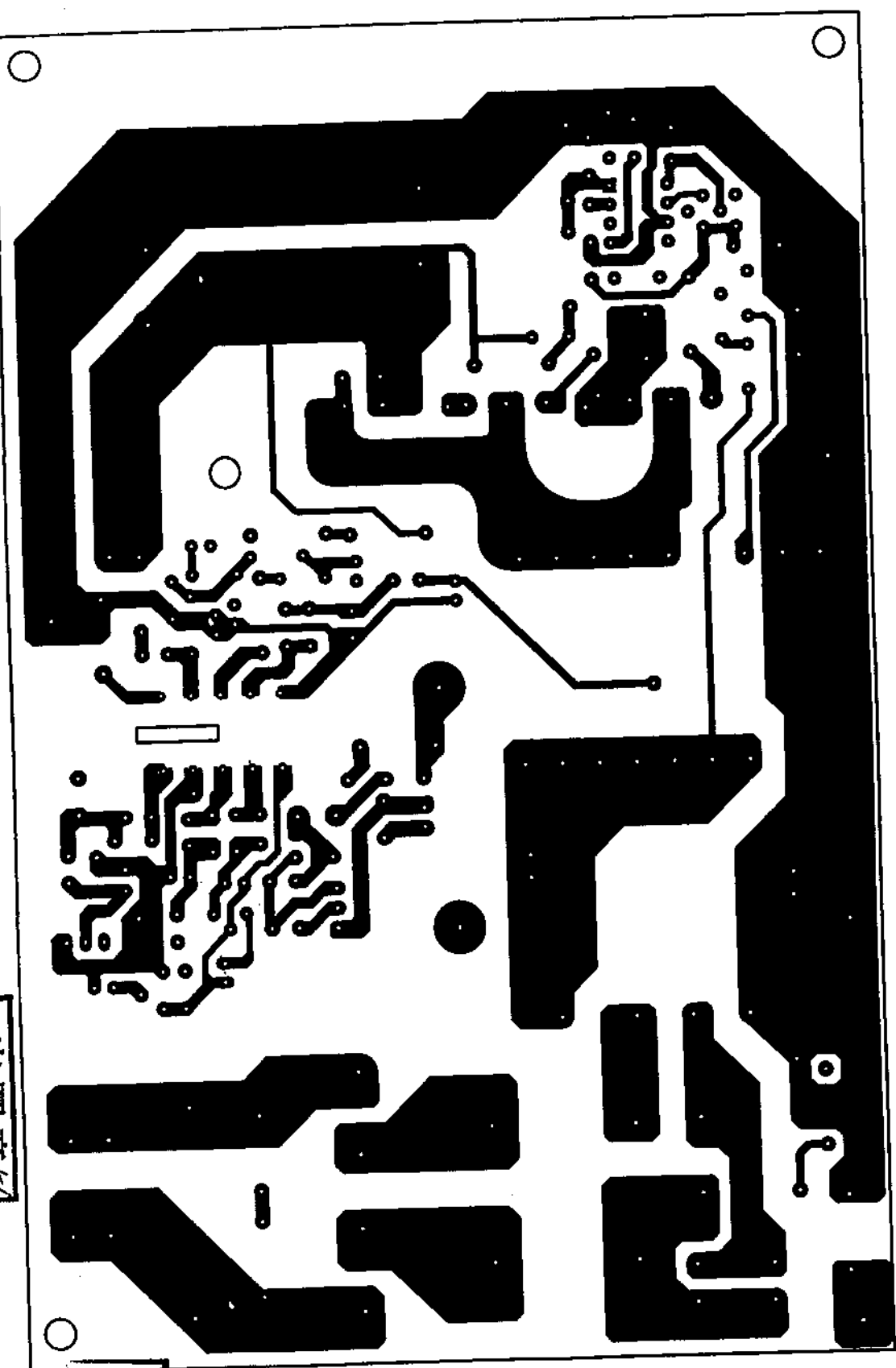


管制文件  
禁止復印

出圖章 5/1-04  
開發部

MANSON ENGINEERING IND. LTD.

SPS-9600-000 TOP LAYER	PREPARED BY: 2012 2 10	
DATE: 05-01-2004	CHECKED BY: [Signature]	
NO. 4543-9600-0112	APPROVED BY: K.K. Leung	
REV. 1.0	UNIT: mm	SHEET 3 OF 14
		QTY: 4



SPS-9600-000 BOTTOM LAYER	PREPARED BY: <i>2012 林</i>	MANSON ENGINEERING IND. LTD.
DATE: 05-01-2004	CHECKED BY: <i>[Signature]</i>	SHEET 5 OF 14
REV. 1.0	UNIT: mm	QTY: 4
	APPROVED BY: <i>K.K. Leung</i>	

出圖章 5/1/04  
開發部

管制文件  
禁止復印



4 Bill of Material (BOM)

MANSON ENGINEERING INDUSTRIAL LTD

PG ID: MBMR  
Date: 24/01

Bills Of Material Component Listing

Page: 1

Ref. No:  
Model #: SPS-9600-327  
Rev Date: 08/12/2004

Description: 1-15Vdc, 60A SWITCHING MODE POWER SUPPLY W/DIGITAL METERS

Verify :

Specification:

Type : \*

Brand Name :

Level	Code #	Description/Remarks	Usage	U/M	Op	PMS	Iss	Sp	Scrp
Net.Wt	Ftr	Rev Date							
0	SPS-9600-CA-327	SPS-9600-327 MATERIAL FOR	1.00000	SET	CA	M	N	N	0.00%
27/03/2004									
1	1011-1032-0291	CASING CERAMIC CAPACITOR 1000PF 1KV	2.00000	PCS	CA	P	Y	N	0.00%
27/03/2004									
1	1011-1041-0171	Location : +/-20% O/P"+">BOTTOM CABINET. O/P"-">BOTTOM CABINET. CERAMIC CAPACITOR 0.01UF 50V	1.00000	PCS	CA	P	Y	N	0.00%
27/03/2004									
1	1011-1042-1261	Location : +80%/-20% C105 CERAMIC CAPACITOR 0.01UF 500V	2.00000	PCS	CA	P	Y	N	0.00%
27/03/2004									
1	1011-1051-0171	Location : +80%/-20% C124,C127. CERAMIC CAPACITOR 0.1UF 50V	1.00000	PCS	CA	P	Y	N	0.00%
27/03/2004									
1	1011-2233-0261	Location : +80%/-20% C109 CERAMIC CAPACITOR 2200PF 500V	4.00000	PCS	CA	P	Y	N	0.00%
27/03/2004									
1	1011-4731-0171	Location : +/-10% Y5P C125,C128. O/P"+">BOTTOM CABINET. O/P"-">BOTTOM CABINET. CERAMIC CAPACITOR 0.0047uF 50V	1.00000	PCS	CA	P	Y	N	0.00%
27/03/2004									
1	1011-4732-0261	Location : +80%/-20% C108 CERAMIC CAPACITOR 4700PF 500V	2.00000	PCS	CA	P	Y	N	0.00%
27/03/2004									
1	1021-4782-0151	Location : +/-20% O/P"+">BOTTOM CABINET. O/P"-">BOTTOM CABINET. ELECT. CAPACITOR 470UF 25V	1.00000	PCS	CA	P	Y	N	0.00%
27/03/2004									
1	1031-1053-0231	Location : +/-20% DIM. 10 X 12.5 MM C75 METALLIZED CAPACITOR	2.00000	PCS	CA	P	Y	N	0.00%
27/03/2004									
1	2160-1010-0703	Location : 0.1UF 250VDC +/-10% C123,C126. FERRITE BEAD	1.00000	PCS	CA	P	Y	N	0.00%
27/03/2004									
1	4021-0204-5038	TDB15RH9.5X9.53X4.8 (TOP VIEW) LED EL204GD DIA. 3mm	1.00000	PCS	CA	P	Y	N	0.00%
27/03/2004									
1	4199-9600-9903	DIFFUSED GREEN "EVERLIGHT" DUAL LED PANEL METER MODULE	1.00000	SET	CA	M	N	N	0.00%
27/03/2004									
2	0513-1006-0611	FOR SPS-9600 CARBON FILM RESISTOR	4.00000	PCS	IN	P	Y	N	0.00%
08/11/2003									
		Location : 1/4W 1Mohm +/-5% T/B R4,R5,R12,R13.							

Page: 2

Ref. No:  
 Model #: SPS-9600-327  
 Rev Date: 08/12/2004

Description: 1-15Vdc, 60A SWITCHING MODE POWER SUPPLY W/DIGITAL METERS

Specification:

Verify :

Brand Name :

Type : \*

Level	Code #	Description/Remarks	Usage	U/M	Op	PMS	Iss	Sp	Scrp
Net.Wt	Ftr	Rev Date							
2	0513-4702-0611	CARBON FILM RESISTOR	2.00000	PCS	IN	P	Y	N	0.00%
08/11/2003		1/4W 470ohm +/-5% T/B							
		Location : R19,R20.							
2	0522-1005-0411	METAL FILM RESISTOR	4.00000	PCS	IN	P	Y	N	0.00%
08/11/2003		1/4W 100Kohm +/-1% T/B							
		Location : R1,R10,R6,R7.							
2	0522-1505-0411	METAL FILM RESISTOR	2.00000	PCS	IN	P	Y	N	0.00%
08/11/2003		1/4W 150Kohm +/-1% T/B							
		Location : R14,R15.							
2	0522-2003-0411	METAL FILM RESISTOR	2.00000	PCS	IN	P	Y	N	0.00%
08/11/2003		1/4W 2Kohm +/-1% T/B							
		Location : R16,R17.							
2	0522-4705-0411	METAL FILM RESISTOR	2.00000	PCS	IN	P	Y	N	0.00%
08/11/2003		1/4W 470Kohm +/-1% T/B							
		Location : R3,R18.							
2	0522-5606-0411	METAL FILM RESISTOR	2.00000	PCS	IN	P	Y	N	0.00%
08/11/2003		1/4W 5.6Mohm +/-1% T/B							
		Location : R8,R9.							
2	0522-7503-0411	METAL FILM RESISTOR	1.00000	PCS	IN	P	Y	N	0.00%
08/11/2003		1/4W 7.5Kohm +/-1% T/B							
		Location : R11.							
2	0685-2224-1110	SEMI-FIXED POTENTIOMETER	2.00000	PCS	IN	P	Y	N	0.00%
08/11/2003		SCR-065A 22K(B)+/- 25% DIA.6mm							
		Location : VR1,VR2.							
2	1011-1023-0171	CERAMIC CAPACITOR 100PF 50V	2.00000	PCS	IN	P	Y	N	0.00%
08/11/2003		+/-10%							
		Location : C11,C18.							
2	1011-1041-0171	CERAMIC CAPACITOR 0.01UF 50V	2.00000	PCS	IN	P	Y	N	0.00%
08/11/2003		+80%/-20%							
		Location : C10,C12.							
2	1011-1051-0151	CERAMIC CAPACITOR 0.1UF 25V	2.00000	PCS	IN	P	Y	N	0.00%
08/11/2003		+80%/-20%							
		Location : C3.							
2	1011-1523-0171	CERAMIC CAPACITOR 150PF 50V	2.00000	PCS	IN	P	Y	N	0.00%
08/11/2003		+/-10%							
		Location : C16,C17.							
2	1021-2272-0151	ELECT. CAPACITOR 22UF 25V	1.00000	PCS	IN	P	Y	N	0.00%
08/11/2003		+/-20% DIM. 5 X 11 MM							
		Location : C6.							
2	1021-2282-0131	ELECT. CAPACITOR 220UF 10V	1.00000	PCS	IN	P	Y	N	0.00%
08/11/2003		+/-20% DIM. 6 X 12 MM							
		Location : C4.							

Page: 5

Ref. No:  
 Model #: SPS-9600-327  
 Rev Date: 08/12/2004

Description: 1-15Vdc, 60A SWITCHING MODE POWER SUPPLY W/DIGITAL METERS

Specification:

Verify :

Brand Name :

Type : \*

Level	Code #	Description/Remarks	Usage	U/M	Op	PMS	Iss	Sp	Scrp
Net.Wt	Ftr	Rev Date							
1	4700-1609-7155	WIRE UL1007 AWG#26 WHITE	1.00000	PCS	CA	P	Y	N	0.00%
27/03/2004		3+160+3 ENDS W/SOLDER DIPPED							
		Location : CC"-".							
1	4700-2350-2232	WIRE UL1015 AWG#16 BLACK	1.00000	PCS	CA	P	Y	N	0.00%
27/03/2004		6+235+5mm							
		Location : SW1->S/NO.							
1	4700-2352-2232	WIRE UL1015 AWG#16 RED	1.00000	PCS	CA	P	Y	N	0.00%
27/03/2004		6+235+5mm							
		Location : SW1->S/LO							
1	4700-2402-2273	WIRE UL1015 AWG#16 RED	1.00000	PCS	CA	P	Y	N	0.00%
27/03/2004		6+240+5 5mm W/SOLDER DIPPED							
		Location : 5A O/P+							
1	4700-2756-2232	WIRE UL1015 AWG#16 BLUE	1.00000	PCS	CA	P	Y	N	0.00%
27/03/2004		6+275+5mm							
		Location : SW1->S/NI							
1	4700-2851-2232	WIRE UL1015 AWG#16 BROWN	1.00000	PCS	CA	P	Y	N	0.00%
27/03/2004		6+285+5mm							
		Location : SW1->S/LI							
1	4761-0009-3010	PVC TUBE DIA. 3.00mm W/UL	0.24000	M	CA	P	Y	N	0.00%
27/03/2004		VW-1 TRANSPARENT "KYOWA"							
		Location : CN3 (PFC)							
1	4761-0009-3810	PVC TUBE DIA. 3.76mm W/UL	0.32000	M	CA	P	Y	N	0.00%
27/03/2004		VW-1 TRANSPARENT "KYOWA"							
		Location : CN5,FAN.							
1	4761-0009-6010	PVC TUBE DIA. 5.94mm W/UL	0.15000	M	CA	P	Y	N	0.00%
27/03/2004		VW-1 TRANSPARENT "KYOWA"							
		Location : C.M,CN3.							
1	4761-0009-8410	PVC TUBE DIA. 8.38mm W/UL	0.41000	M	CA	P	Y	N	0.00%
27/03/2004		VW-1 TRANSPARENT "KYOWA"							
		Location : SW1,O/P.							
1	4781-0000-5010	HEAT SHRINKABLE TUBE BLACK	0.03600	M	CA	P	Y	N	0.00%
27/03/2004		DIA. 5mm UL224 "HAN KYUNG"							
		Location : I/P.							
1	4801-2112-6522	ROCKER SWITCH MR-22-N4BB-F2	1.00000	PCS	CA	P	Y	N	0.00%
12/06/2004		2P1T 12A,125/250VAC WHITE DOT							
		Location : SW1.							
1	6201-9600-3270	PLASTIC FRONT PANEL SPS-9600	1.00000	PCS	CA	M	N	N	0.00%
27/03/2004		VOLTCRAFT WARM GREY 1C PC							

Page: 7

Ref. No:  
 Model #: SPS-9600-327  
 Rev Date: 08/12/2004

Description: 1-15Vdc, 60A SWITCHING MODE POWER SUPPLY W/DIGITAL METERS

Verify :  
 Type : \*  
 Brand Name :

Level	Code #	Description/Remarks	Usage	U/M	Op	PMS	Iss	Sp	Scrp
Net.Wt	Ftr	Rev Date							
1	7041-0012-0098	RED SCREW TERMINAL POST 80A	1.00000	PCS	CA	M	N	N	0.00%
27/03/2004									
2	6280-9600-0020	DIA.16x60 W/ INSULATOR BINDING POST KNOB 80A RED	1.00000	PCS	CA	M	N	N	0.00%
10/02/2004									
3	7171-9600-0000	INSERT INJECTION W/ TERMINAL BINDING POST NUT DIA.13X20MM	1.00000	PCS	CA	P	Y	N	0.00%
24/04/2004									
2	6282-9600-0020	BRASS W/NICKEL PLATING RED TERMINAL INSULATOR 80A	1.00000	PCS	CA	P	Y	N	0.00%
10/02/2004									
2	6283-9600-0020	RED TERMINAL BUSHING 80A	1.00000	PCS	CA	P	Y	N	0.00%
10/02/2004									
2	7172-9600-0010	BINDING POST SHAFT DIA.16X60mm	1.00000	PCS	CA	P	Y	N	0.00%
10/02/2004									
2	7300-8015-1001	BRASS W/NICKEL PLATING PLAN WASHER M8.2x14x1	1.00000	PCS	CA	P	Y	N	0.00%
10/02/2004									
2	7303-8015-2002	W/NICKEL PLATING 109-14 SPRING WASHER M8X14X2	2.00000	PCS	CA	P	Y	N	0.00%
30/04/2004									
2	7305-8015-1600	W/ZINC PLATING INTERNAL TOOTH WASHER	1.00000	PCS	CA	P	Y	N	0.00%
23/04/2004									
2	7350-8010-4591	M8X15X1.6 BRASS NUT M8x1.0 W/Ni PLATING	3.00000	PCS	CA	P	Y	N	0.00%
03/04/2004									
1	7090-0816-0999	8 PIN METAL CONNECTOR	1.00000	SET	CA	P	Y	N	0.00%
27/03/2004									
1	7155-2000-0300	BRASS STUD M3X0.5X5.5X10mm(L)	1.00000	PCS	CA	P	Y	N	0.00%
27/03/2004									
1	7172-0613-2011	BINDING POST SHAFT DIA. 5X31.5	2.00000	PCS	CA	P	Y	N	0.00%
27/03/2004									
1	7204-3006-1101	BRASS W/GOLD PLATING FOR SCREW M3X6X0.5 W/Ni PLATING	39.00000	PCS	CA	P	Y	N	0.00%
27/03/2004									
1	7206-4008-1001	Location : BINDING HEAD CROSS DRIVER PCB,OUTPUT. SCREW M4X8X0.7 W/Ni PLATING	1.00000	PCS	CA	P	Y	N	0.00%
27/03/2004									
1	7232-3008-1001	Location : PAN HEAD CROSS DRIVER GND SELF-TAPPING SCREW M3X8 PT	8.00000	PCS	CA	P	Y	N	0.00%
27/03/2004									
1	7232-3022-1001	PAN HEAD CROSS DRIVER W/Ni SELF-TAPPING SCREW M3X22 PT	2.00000	PCS	CA	P	Y	N	0.00%
27/03/2004									
1	7232-5012-1001	PAN HEAD CROSS DRIVER W/Ni SELF-TAPPING SCREW M5X12PT	4.00000	PCS	CA	P	Y	N	0.00%
27/03/2004									
1	7303-8015-2002	Location : PAN HEAD (M4P) CROSS DRIVER FAN SPRING WASHER M8X14X2	2.00000	PCS	CA	P	Y	N	0.00%
27/03/2004									
1	7304-3006-0900	Location : W/ZINC PLATING O/P EXTERNAL TOOTH WASHER M3X6X0.9	7.00000	PCS	CA	P	Y	N	0.00%
27/03/2004									
1	7304-4008-0900	Location : PCB,OUTPUT. EXTERNAL TOOTH WASHER M4X8X0.9	4.00000	PCS	CA	P	Y	N	0.00%
27/03/2004									
1	7304-5010-1200	Location : GND,O/P. EXTERNAL TOOTH WASHER M5X1X1.2	2.00000	PCS	CA	P	Y	N	0.00%
27/03/2004									
		Location : O/P							

Page: 8

Ref. No:  
 Model #: SPS-9600-327 Description: 1-15Vdc, 60A SWITCHING MODE POWER SUPPLY W/DIGITAL METERS  
 Rev Date: 08/12/2004

Verify : Specification:  
 Type : \* Brand Name :

Level	Code #	Description/Remarks	Usage	U/M	Op	PMS	Iss	Sp	Scrp
Net.Wt	Ftr	Rev Date							
1	7350-4007-3061	STEEL NUT M4X0.7	3.00000	PCS	CA	P	Y	N	0.00%
27/03/2004									
1	7356-1214-2071	BRASS NUT WITH NICKEL PLATING	2.00000	PCS	CA	P	Y	N	0.00%
27/03/2004									
1	7408-4007-3401	M12X0.8 (9/16 X 2) SOLDERING PLATE M4X7X8	1.00000	PCS	CA	P	Y	N	0.00%
27/03/2004									
1	7422-8010-3001	W/NICKEL PLATING 10015-5 SOLDERING PLATE M8.2X21.9X0.3	4.00000	PCS	CA	P	Y	N	0.00%
27/03/2004									
1	8001-8025-1222	0.3mmTHK.BRASS W/NI PLATING DC FAN 80mm 12VDC 2.6W	1.00000	PCS	CA	P	Y	N	0.00%
27/03/2004									
1	8003-1080-0001	KD1208PTS1-H (SLEEVE BEARING) FAN FINGER GUARD 80mm	1.00000	PCS	CA	P	Y	N	0.00%
27/03/2004									
1	8045-5210-9009	AC SOCKET UNIVERSAL TYPE	1.00000	PCS	CA	P	Y	N	0.00%
27/03/2004									
1	8081-0383-0107	10A/250V AC-P03CS05 BLACK EDK 187 PVC SLEEVE DFA-18-3.0 105C	4.00000	PCS	CA	P	Y	N	0.00%
27/03/2004									
1	8081-0453-0107	600V DIC PACKING : 1K PCS/BAG 250 PVC SLEEVE DFA-25-3.5 105C	6.00000	PCS	CA	P	Y	N	0.00%
27/03/2004									
1	8202-0625-9002	600V DIC PACKING : 1K PCS/BAG CABLE TIE 60 X 2.5 MM	7.00000	PCS	CA	P	Y	N	0.00%
27/03/2004									
1	8202-1025-9002	NYLON NATURAL COLOUR CABLE TIE 100 X 2.5 MM	3.00000	PCS	CA	P	Y	N	0.00%
27/03/2004									
1	8250-4620-1080	NYLON NATURAL COLOUR PLASTIC FOOT DIA20mm 9.6mm THK	4.00000	PCS	CA	P	Y	N	0.00%
27/03/2004									
0	SPS-9600-DC-000	BLK FF-2 INSERT PIN SPS-9600-DC-000 MATERIAL FOR	1.00000	SET	DC	M	N	N	0.00%
27/03/2004									
1	SPS-9600-DC-CA-000	DC-DC MODULE SPS-9600-DC-000 MATERIAL FOR	1.00000	SET	CA	M	N	N	0.00%
22/05/2003									
2	2102-2510-1022	CASING FERRITE TOROID CORE W/COATING	1.00000	PCS	CA	P	Y	N	0.00%
12/01/2004									
3	2102-2510-1021	MA055 R-25/15/10E OD=25,ID=15 O/P FERRITE TOROID CORE	1.00000	PCS	TR	P	Y	N	0.00%
27/09/2001									
2	3111-2837-2404	MA055R-25/15/10E OD=25,ID=15 N-CHANNEL POWER MOSFET	4.00000	PCS	CA	P	Y	N	0.00%
22/05/2003									
2	3252-4010-9018	2SK2837 "TOSHIBA" Q18-Q21. SCHOTTKY RECTIFIER 40CPQ100	2.00000	PCS	CA	P	Y	N	0.00%
26/09/2003									
2	3631-1045-0019	100V/40A TO-247AC "IR" D12,D13. F.Y.I. THERMISTOR NTC 10K AT	1.00000	PCS	CA	P	Y	N	0.00%
10/01/2004									
		25DEG B=3720K DIA. 1.85 Location : RT							

Bills Of Material Component Listing

Page: 9

Ref. No:  
 Model #: SPS-9600-327  
 Rev Date: 08/12/2004

Description: 1-15Vdc, 60A SWITCHING MODE POWER SUPPLY W/DIGITAL METERS

Verify :

Specification:

Type : \*

Brand Name :

Level	Code #	Description/Remarks	Usage	U/M	Op	PMS	Iss	Sp	Scrp
Net.Wt	Ftr	Rev Date							
2	4700-1600-0275	WIRE UL1015 AWG#10 BLACK	2.00000	PCS	CA	P	Y	N	0.00%
12/01/2004		Location : 10+160+5 5mm W/SOLDER DIPPED							
2	4700-1952-0274	WIRE UL1015 AWG#10 RED	2.00000	PCS	CA	P	Y	N	0.00%
12/01/2004		Location : 10+195+5 5mm W/SOLDER DIPPED							
2	4700-3652-2274	WIRE UL1015 AWG#16 RED	1.00000	PCS	CA	P	Y	N	0.00%
23/02/2004		Location : 10+365+5 5mm W/SOLDER DIPPED							
2	4700-3900-2274	WIRE UL1015 AWG#16 BLACK	1.00000	PCS	CA	P	Y	N	0.00%
23/02/2004		Location : 10+390+5 5mm W/SOLDER DIPPED							
2	4761-0009-9610	PVC TUBE OD 10.65MM ID 9.65MM	0.04400	M	CA	P	Y	N	0.00%
10/12/2003		Location : (3/8") W/UL VW-1 TRANSPARENT							
2	4782-0000-1010	HEAT SHRINKABLE TUBE BLACK	0.04000	M	CA	P	Y	N	0.00%
12/01/2004		Location : DIA. 10mm UL224							
2	4782-0000-1210	HEAT SHRINKABLE TUBE BLACK	0.02000	M	CA	P	Y	N	0.00%
04/03/2004		Location : DIA. 12MM UL224							
2	6701-9601-0001	HEAT SINK FOR SPS-9600	1.00000	PCS	CA	P	Y	N	0.00%
22/05/2003		Location : 150X60X13mm 3mm THK ALUMINIUM							
2	6701-9601-0002	HEAT SINK FOR SPS-9600	1.00000	PCS	CA	P	Y	N	0.00%
22/05/2003		Location : W=65, H=20 10FIN L=140MM							
2	6701-9601-0004	HEAT SINK FOR SPS-9600	1.00000	PCS	CA	P	Y	N	0.00%
14/06/2003		Location : TH4							
2	6701-9601-0005	HEAT SINK FOR SPS-9600	1.00000	PCS	CA	P	Y	N	0.00%
08/11/2003		Location : 140X35X20X3mm THK. ALUMINIUM							
2	7041-0020-0899	SCREW WIRE TERMINAL ST-20-8	2.00000	PCS	CA	P	Y	N	0.00%
12/01/2004		Location : 149X81X3mm THK. ALUMINIUM							
2	7204-3006-1101	SCREW M3X6X0.5 W/Ni PLATING	6.00000	PCS	CA	P	Y	N	0.00%
28/11/2003		Location : O/P							
2	7204-3008-1001	SCREW M3X8X0.5 W/Ni PLATING	8.00000	PCS	CA	P	Y	N	0.00%
28/11/2003		Location : BINDING HEAD CROSS DRIVER							
2	7204-3010-1001	SCREW M3X10X0.5 W/Ni PLATING	2.00000	PCS	CA	P	Y	N	0.00%
28/11/2003		Location : HT3,HT4.							
2	7204-3012-1001	SCREW M3X12X0.5 W/Ni PLATING	4.00000	PCS	CA	P	Y	N	0.00%
28/11/2003		Location : PAN HEAD CROSS DRIVER							
		Location : D12,D13.							
		Location : PAN HEAD CROSS DRIVER							
		Location : Q18-Q21.							

Bills Of Material Component Listing

Page: 10

Ref. No:  
 Model #: SPS-9600-327  
 Rev Date: 08/12/2004

Description: 1-15Vdc, 60A SWITCHING MODE POWER SUPPLY W/DIGITAL METERS

Verify :

Specification:

Type : \*

Brand Name :

Level	Code #	Description/Remarks	Usage	U/M	Op	PMS	Iss	Sp	Scrp
Net.Wt	Ftr	Rev Date							
2	7300-3008-0502	PLAN WASHER M3X8X0.5	14.00000	PCS	CA	P	Y	N	0.00%
28/11/2003									
		Location : W/ZINC PLATING							
2	7303-3005-0702	Q18-Q21,D12,D13,TH3. SPRING WASHER M3X5X0.7	13.00000	PCS	CA	P	Y	N	0.00%
28/11/2003									
		Location : W/ZINC PLATING							
2	7304-3006-0900	Q18-Q21,D12,D13. EXTERNAL TOOTH WASHER M3X6X0.9	1.00000	PCS	CA	P	Y	N	0.00%
06/06/2003									
2	7371-3005-3044	BRASS STUD M3X0.5X30mm	4.00000	PCS	CA	P	Y	N	0.00%
26/09/2003									
2	8070-0030-0121	SILICON RUBBER 105X30X0.3mmTHK	1.00000	PCS	CA	M	N	N	0.00%
24/10/2003									
		Location : Q18,Q19,Q20,Q21.							
3	8070-0030-0001	SILICON RUBBER	0.01170	M	CA	P	Y	N	0.00%
28/11/2003									
2	8070-0110-0006	28CMX100CMX0.3MM THK MICA SHEET TO-3P3 THK 0.1mm	2.00000	PCS	CA	P	Y	N	0.00%
22/05/2003									
		Location : D12,D13.							
1	SPS-9600-DC-IN-000	SPS-9600-DC-000 MATERIALS FOR	1.00000	SET	IN	M	N	N	0.00%
22/05/2003									
		Location : INSERTION							
2	0503-1201-0611	FUSIBLE METAL FILM RESISTOR	4.00000	PCS	IN	P	Y	N	0.00%
22/05/2003									
		Location : 1/4W 12ohm +/-5% "HK RESISTOR"							
2	0512-1003-0611	R58,R59,R66,R67. CARBON FILM RESISTOR	2.00000	PCS	IN	P	Y	N	0.00%
13/12/2003									
		Location : 1/8W 1Kohm +/-5% T/B							
2	0512-1004-0611	R141,R100. CARBON FILM RESISTOR	2.00000	PCS	IN	P	Y	N	0.00%
13/12/2003									
		Location : 1/8W 10Kohm +/-5% T/B							
2	0512-1005-0611	R117,R103. CARBON FILM RESISTOR	3.00000	PCS	IN	P	Y	N	0.00%
13/02/2004									
		Location : 1/8W 100Kohm +/-5% T/B							
2	0512-1006-0611	R71,R78,R81. CARBON FILM RESISTOR	1.00000	PCS	IN	P	Y	N	0.00%
19/08/2003									
		Location : 1/8W 1Mohm +/-5% T/B							
2	0512-1205-0611	R72 CARBON FILM RESISTOR	1.00000	PCS	IN	P	Y	N	0.00%
22/05/2003									
		Location : 1/8W 120Kohm +/-5% T/B							
2	0512-1504-0611	R47 CARBON FILM RESISTOR	1.00000	PCS	IN	P	Y	N	0.00%
14/02/2004									
		Location : 1/8W 15Kohm +/-5% T/B							
2	0512-2003-0611	R44 CARBON FILM RESISTOR	2.00000	PCS	IN	P	Y	N	0.00%
13/02/2004									
		Location : 1/8W 2Kohm +/-5% T/B							
2	0512-2203-0611	R94,R95. CARBON FILM RESISTOR	1.00000	PCS	IN	P	Y	N	0.00%
13/02/2004									
		Location : 1/8W 2.2Kohm +/-5% T/B							
		Location : R87							

Bills Of Material Component Listing

Page: 11

Ref. No:  
 Model #: SPS-9600-327  
 Rev Date: 08/12/2004

Description: 1-15Vdc, 60A SWITCHING MODE POWER SUPPLY W/DIGITAL METERS

Verify :  
 Type : \*

Specification:  
 Brand Name :

Level	Code #	Description/Remarks	Usage	U/M	Op	PMS	Iss	Sp	Scrp
Net.Wt	Ftr	Rev Date							
2	0512-2204-0611	CARBON FILM RESISTOR	2.00000	PCS	IN	P	Y	N	0.00%
14/02/2004									
		Location : 1/8W 22Kohm +/-5% T/B R75,R89.							
2	0512-2403-0611	CARBON FILM RESISTOR	1.00000	PCS	IN	P	Y	N	0.00%
19/08/2003									
		Location : 1/8W 2.4Kohm +/-5% T/B R46.							
2	0512-3002-0611	CARBON FILM RESISTOR	1.00000	PCS	IN	P	Y	N	0.00%
19/08/2003									
		Location : 1/8W 300ohm +/-5% T/B R130							
2	0512-3003-0611	CARBON FILM RESISTOR	5.00000	PCS	IN	P	Y	N	0.00%
13/02/2004									
		Location : 1/8W 3Kohm +/-5% T/B R43,R99,R40,R50,R61.							
2	0512-3302-0611	CARBON FILM RESISTOR	2.00000	PCS	IN	P	Y	N	0.00%
27/08/2003									
		Location : 1/8W 330ohm +/-5% T/B R60,R107.							
2	0512-3903-0611	CARBON FILM RESISTOR	2.00000	PCS	IN	P	Y	N	0.00%
08/03/2004									
		Location : 1/8W 3.9Kohm +/-5% T/B R74,R98.							
2	0512-3905-0611	CARBON FILM RESISTOR	1.00000	PCS	IN	P	Y	N	0.00%
13/02/2004									
		Location : 1/8W 390Kohm +/-5% T/B R86							
2	0512-4302-0611	CARBON FILM RESISTOR	1.00000	PCS	IN	P	Y	N	0.00%
26/09/2003									
		Location : 1/8W 430ohm +/-5% T/B R118.							
2	0512-4303-0611	CARBON FILM RESISTOR	2.00000	PCS	IN	P	Y	N	0.00%
13/02/2004									
		Location : 1/8W 4.3Kohm +/-5% T/B R96,R48.							
2	0512-4703-0611	CARBON FILM RESISTOR	2.00000	PCS	IN	P	Y	N	0.00%
19/08/2003									
		Location : 1/8W 4.7Kohm +/-5% T/B R51,R42.							
2	0512-5103-0611	CARBON FILM RESISTOR	3.00000	PCS	IN	P	Y	N	0.00%
19/08/2003									
		Location : 1/8W 5.1Kohm +/-5% T/B R97,R140,R142.							
2	0512-5602-0611	CARBON FILM RESISTOR	1.00000	PCS	IN	P	Y	N	0.00%
13/02/2004									
		Location : 1/8W 560ohm +/-5% T/B R88							
2	0513-1001-0611	CARBON FILM RESISTOR	4.00000	PCS	IN	P	Y	N	0.00%
27/08/2003									
		Location : 1/4W 10ohm +/-5% T/B R55,R63,R57,R65.							
2	0513-1002-0611	CARBON FILM RESISTOR	1.00000	PCS	IN	P	Y	N	0.00%
10/12/2003									
		Location : 1/4W 100ohm +/-5% T/B R41							



Page: 12

Ref. No:  
 Model #: SPS-9600-327  
 Rev Date: 08/12/2004

Description: 1-15Vdc, 60A SWITCHING MODE POWER SUPPLY W/DIGITAL METERS

Verify :

Specification:

Type : \*

Brand Name :

Level	Code #	Description/Remarks	Usage	U/M	Op	PMS	Iss	Sp	Scrp
Net.Wt	Ftr	Rev Date							
2	0513-2205-0611	CARBON FILM RESISTOR	2.00000	PCS	IN	P	Y	N	0.00%
26/09/2003									
		Location : 1/4W 220Kohm +/-5% T/B R1,R2.							
2	0513-3003-0611	CARBON FILM RESISTOR	1.00000	PCS	IN	P	Y	N	0.00%
15/11/2003									
		Location : 1/4W 3Kohm +/-5% T/B R49.							
2	0513-4702-0611	CARBON FILM RESISTOR	2.00000	PCS	IN	P	Y	N	0.00%
22/05/2003									
		Location : 1/4W 470ohm +/-5% T/B R54,R62.							
2	0513-5103-0611	CARBON FILM RESISTOR	2.00000	PCS	IN	P	Y	N	0.00%
22/05/2003									
		Location : 1/4W 5.1Kohm +/-5% T/B R56,R64.							
2	0513-6802-0611	CARBON FILM RESISTOR	2.00000	PCS	IN	P	Y	N	0.00%
22/05/2003									
		Location : 1/4W 680ohm +/-5% T/B R52,R53.							
2	0514-2205-0611	CARBON FILM RESISTOR	2.00000	PCS	IN	P	Y	N	0.00%
10/11/2004									
		Location : 1/2W 220Kohm +/-5% T/B C60,C61.							
2	0521-1001-0411	METAL FILM RESISTOR 1/8W	1.00000	PCS	IN	P	Y	N	0.00%
28/11/2003									
		Location : 10ohm +/-1% 50ppm T/B R108							
2	0521-1203-0411	METAL FILM RESISTOR	1.00000	PCS	IN	P	Y	N	0.00%
13/02/2004									
		Location : 1/8W 1.2Kohm +/-1% T/B R85							
2	0521-1502-7411	METAL FILM RESISTOR 1/8W	1.00000	PCS	IN	P	Y	N	0.00%
28/11/2003									
		Location : 150ohm +/-1% 25ppm T/B VR5.							
2	0521-1504-0411	METAL FILM RESISTOR	1.00000	PCS	IN	P	Y	N	0.00%
27/08/2003									
		Location : 1/8W 15Kohm +/-1% T/B R45							
2	0521-2004-0411	METAL FILM RESISTOR	1.00000	PCS	IN	P	Y	N	0.00%
13/02/2004									
		Location : 1/8W 20Kohm +/-1% T/B R84							
2	0521-2005-0411	METAL FILM RESISTOR	1.00000	PCS	IN	P	Y	N	0.00%
13/02/2004									
		Location : 1/8W 200Kohm +/-1% T/B R82							
2	0521-3302-0411	METAL FILM RESISTOR 1/8W	1.00000	PCS	IN	P	Y	N	0.00%
28/11/2003									
		Location : 330ohm +/-1% 50ppm T/B R105							
2	0521-3903-0411	METAL FILM RESISTOR	2.00000	PCS	IN	P	Y	N	0.00%
08/03/2004									
		Location : 1/8W 3.9Kohm +/-1% T/B R76,R101.							

Page: 13

Ref. No:  
 Model #: SPS-9600-327  
 Rev Date: 08/12/2004

Description: 1-15Vdc, 60A SWITCHING MODE POWER SUPPLY W/DIGITAL METERS

Verify :

Specification:

Type : \*

Brand Name :

Level	Code #	Description/Remarks	Usage U/M Op	PMS	Iss	Sp	Scrp
Net.Wt	Ftr	Rev Date					
2	0521-5104-0411	METAL FILM RESISTOR	1.00000 PCS IN	P	Y	N	0.00%
22/05/2003							
		Location : 1/8W 51Kohm +/-1% T/B					
2	0521-6203-0411	METAL FILM RESISTOR	1.00000 PCS IN	P	Y	N	0.00%
13/02/2004							
		Location : 1/8W 6.2K +/-1% T/B					
2	0521-6803-0411	METAL FILM RESISTOR	1.00000 PCS IN	P	Y	N	0.00%
08/03/2004							
		Location : R83					
2	0521-8203-0411	METAL FILM RESISTOR	1.00000 PCS IN	P	Y	N	0.00%
13/02/2004							
		Location : 1/8W 6.8Kohm +/-1% T/B					
2	0521-9103-0411	METAL FILM RESISTOR	1.00000 PCS IN	P	Y	N	0.00%
13/02/2004							
		Location : R102					
2	0522-1504-0411	METAL FILM RESISTOR	1.00000 PCS IN	P	Y	N	0.00%
14/06/2003							
		Location : 1/8W 8.2Kohm +/-1% T/B					
2	0533-2201-0611	METAL OXIDE RESISTOR	4.00000 PCS IN	P	Y	N	0.00%
31/05/2004							
		Location : R92					
2	0534-1501-0611	METAL OXIDE RESISTOR 15ohm 1W	2.00000 PCS IN	P	Y	N	0.00%
22/05/2003							
		Location : 1/2W 22ohm +/-5%					
2	0536-4701-0611	METAL OXIDE RESISTOR 47ohm	2.00000 PCS IN	P	Y	N	0.00%
22/05/2003							
		Location : R69,R70.					
2	0555-1002-0616	WIRE WOUND RESISTOR SW 100ohm	1.00000 PCS IN	P	Y	N	0.00%
22/05/2003							
		Location : 3W +/-5% WIRE LENGTH=30mm					
2	0600-2504-4010	VARIABLE RESISTOR 5K CURVE B	1.00000 PCS IN	P	Y	N	0.00%
26/09/2003							
		Location : R68,R121.					
2	0685-2502-1110	SEMI-FIXED POTENTIOMETER	1.00000 PCS IN	P	Y	N	0.00%
09/10/2003							
		Location : +/-5% CEMENT TYPE					
2	0685-2503-1110	SEMI-FIXED POTENTIOMETER	1.00000 PCS IN	P	Y	N	0.00%
26/09/2003							
		Location : R73.					
2	1011-1032-0291	CERAMIC CAPACITOR 1000PF 1KV	8.00000 PCS IN	P	Y	N	0.00%
04/03/2004							
		Location : CTS 296UBDT502BODN +/-20%					
		Location : VR1					
		Location : SCR-065A B500ohm +/-25%					
		Location : VR2					
		Location : SCR-065A 5K(B) +/- 25% DIA.6mm					
		Location : VR4.					
		Location : +/-20%					
		Location : C57,C61,C110,C63-C66,C94.					

Ref. No: Description: 1-15Vdc, 60A SWITCHING MODE POWER SUPPLY W/DIGITAL METERS  
 Model #: SPS-9600-327  
 Rev Date: 08/12/2004 Specification:

Verify : Brand Name :

Type	Code #	Description/Remarks	Usage U/M Op	PMS	Iss	Sp	Scrp
Level	Net.Wt	Ftr	Rev Date				
2	1011-1041-0171	CERAMIC CAPACITOR 0.01UF 50V	9.00000 PCS IN	P	Y	N	0.00%
17/03/2004		+80%/-20%					
		Location : C101,C80,C78,C104.					
		C77,C142,C143,C92,C122.					
2	1011-1042-1261	CERAMIC CAPACITOR 0.01UF 500V	2.00000 PCS IN	P	Y	N	0.00%
15/11/2003		+80%/-20%					
		Location : C140,C141.					
2	1011-1051-0171	CERAMIC CAPACITOR 0.1UF 50V	15.00000 PCS IN	P	Y	N	0.00%
24/01/2005		+80%/-20%					
		Location : C51,C54,C93,C82,C121,C79,C76					
		C86,C87,C90,C91,C99,C84,C107.					
		C160.					
2	1011-1053-0139	CERAMIC CHIP CAPACITOR	1.00000 PCS IN	P	Y	N	0.00%
26/09/2003		0805 X7R 0.1uF 50V +/-10%					
		Location : C89					
2	1011-2211-0151	CERAMIC CAPACITOR 22PF 25V	1.00000 PCS IN	P	Y	N	0.00%
14/06/2003		+/-10%					
		Location : C120					
2	1011-4732-0261	CERAMIC CAPACITOR 4700PF 500V	2.00000 PCS IN	P	Y	N	0.00%
05/11/2003		+/-20%					
		Location : C62,C67.					
2	1011-5633-0179	CERAMIC CHIP CAPACITOR	1.00000 PCS IN	P	Y	N	0.00%
26/09/2003		0805 X7R 0.0056uF 50V +/-10%					
		Location : C88					
2	1015-2232-4231	CERAMIC AC CAPACITOR	1.00000 PCS IN	P	Y	N	0.00%
10/01/2004		2200PF 250VAC +/-20%					
		Location : C45					
2	1015-3332-0231	CERAMIC AC CAPACITOR	2.00000 PCS IN	P	Y	N	0.00%
27/08/2003		3300PF 250VAC +/-20% Y1					
		Location : C2,C3.					
2	1021-1072-0171	ELECT. CAPACITOR 10UF 50V	4.00000 PCS IN	P	Y	N	0.00%
13/02/2004		+/-20% DIM. 5 X 11 MM "GS"					
		Location : C50,C53,C40,C42.					
2	1021-1082-0311	ELECT. CAPACITOR 100UF 25V	1.00000 PCS IN	P	Y	N	0.00%
13/02/2004		105C +/-20% DIM.6.3X11MM					
		Location : C102					
2	1021-2262-0171	ELECT. CAPACITOR 2.2UF 50V	1.00000 PCS IN	P	Y	N	0.00%
13/02/2004		+/-20% DIM. 5 X 11 MM					
		Location : C83					
2	1021-2282-0302	ELECT. CAPACITOR 220UF 10V	2.00000 PCS IN	P	Y	N	0.00%
22/05/2003		105C +/-20% DIM. 6.3 X 11mm					
		Location : C95,C96.					

Ref. No:  
 Model #: SPS-9600-327  
 Rev Date: 08/12/2004

Description: 1-15Vdc, 60A SWITCHING MODE POWER SUPPLY W/DIGITAL METERS

Verify :  
 Type : \*

Specification:  
 Brand Name :

Level	Code #	Description/Remarks	Usage	U/M	Op	PMS	Iss	Sp	Scrp
Net.Wt	Ftr	Rev Date							
2	1021-4772-0151	ELECT. CAPACITOR 47UF 25V	2.00000	PCS	IN	P	Y	N	0.00%
14/06/2003		+/-20% DIM. 5 X 11 MM							
	Location :	C56,C55.							
2	1021-4782-0151	ELECT. CAPACITOR 470UF 25V	1.00000	PCS	IN	P	Y	N	0.00%
10/01/2004		+/-20% DIM. 10 X 12.5 MM							
	Location :	C106							
2	1022-1032-1311	ELECT. CAPACITOR 1000uF 25V	2.00000	PCS	IN	P	Y	N	0.00%
18/06/2004		105C +/-20% 13X20mm KF SERIES							
	Location :	C73,C74.							
2	1023-2282-0381	ELECT CAPACITOR 220uF 250V	2.00000	PCS	IN	P	Y	N	0.00%
07/11/2003		105C +/-20% DIM.22X25mm							
	Location :	C48,C60.							
2	1024-2232-0311	ELECT CAPACITOR 2200uF 25V	1.00000	PCS	IN	P	Y	N	0.00%
18/06/2004		105C +/-20% DIM.16X25mm							
	Location :	C71.							
2	1024-6832-0311	ELECT CAPACITOR 6800uF 25V	1.00000	PCS	IN	P	Y	N	0.00%
07/11/2003		105C +/-20% DIM.18X40mm							
	Location :	C70							
2	1035-1062-0241	METALLIZED CAPACITOR	1.00000	PCS	IN	P	Y	N	0.00%
26/09/2003		1UF 275VAC X2							
	Location :	C1							
2	1035-1542-0241	METALLIZED CAP. 0.015uF 275VAC	1.00000	PCS	IN	P	Y	N	0.00%
19/06/2003		X2 +/-10% PITCH=10.0mm							
	Location :	C130							
2	1061-2253-0271	METALLIZED POLYESTER CAP.	2.00000	PCS	IN	P	Y	N	0.00%
26/09/2003		0.22uF 630V +/-10% PITCH=20mm							
	Location :	C16,C144.							
2	1061-3363-0231	METALLIZED POLYESTER CAP.	1.00000	PCS	IN	P	Y	N	0.00%
10/11/2004		3.3uF 250V +/-10% (MEF) CARLI							
	Location :	C41.							
2	1062-1054-0181	METALLIZED POLYESTER CAP	1.00000	PCS	IN	P	Y	N	0.00%
24/01/2005		0.1UF 63VDC +/-5% BOX TYPE							
	Location :	C85							
2	1094-1033-0171	MYLAR CAPACITOR 0.001UF 50V	1.00000	PCS	IN	P	Y	N	0.00%
22/05/2003		+/-10% PEI "CARLI"							
	Location :	C52							
2	1094-2253-0191	MYLAR CAPACITOR 0.22UF 100V	1.00000	PCS	IN	P	Y	N	0.00%
26/09/2003		+/-10% PEI "CARLI"							
	Location :	C72							
2	1094-4733-1191	MYLAR CAPACITOR 0.0047UF 100V	2.00000	PCS	IN	P	Y	N	0.00%
22/05/2003		+/-10% PITCH=5mm PEI "CARLI"							
	Location :	C58,C59							

Bills Of Material Component Listing

Page: 16

Ref. No:  
 Model #: SPS-9600-327  
 Rev Date: 08/12/2004

Description: 1-15Vdc, 60A SWITCHING MODE POWER SUPPLY W/DIGITAL METERS

Verify :

Specification:

Type : \*

Brand Name :

Level	Code #	Description/Remarks	Usage	U/M	Op	PMS	Iss	Sp	Scrp
Net.Wt	Ftr	Rev Date							
2	1095-1062-1171	MONO CAPACITOR 1UF / 50V	3.00000	PCS	IN	P	Y	N	0.00%
13/02/2004									
		Location : +/-20% "DUANHUA"							
2	1501-5010-2812	C68,C69,C103. POWER INDUCTOR 28uH +/-20%	2.00000	PCS	IN	P	Y	N	0.00%
29/11/2003									
		Location : 50mA "TOP VIEW"							
2	2531-7809-0199	L13,L14. IC 78L09CP POSITIVE VOLTAGE	1.00000	PCS	IN	P	Y	N	0.00%
22/05/2003									
		Location : REGULATOR "JRC" TO-92							
2	2531-7909-0199	U7 IC 79L09CP NEGATIVE VOLTAGE	1.00000	PCS	IN	P	Y	N	0.00%
22/05/2003									
		Location : REGULATOR "JRC" TO-92							
2	2533-0494-0210	U8 IC TL494CN PWM CONTROLLER "TI"	1.00000	PCS	IN	P	Y	N	0.00%
22/05/2003									
		Location : U3							
2	2541-0027-0211	IC OP27GP LOW-NOISE HIGH-SPEED	1.00000	PCS	IN	P	Y	N	0.00%
22/05/2003									
		Location : PRECISION OP-AMP							
2	2541-0324-0061	U5 IC LM324N "ST" LOW POWER QUAD	1.00000	PCS	IN	P	Y	N	0.00%
13/02/2004									
		Location : OP-AMP							
2	2541-0358-5061	U6 IC LM358 "ST"	1.00000	PCS	IN	P	Y	N	0.00%
22/05/2003									
		Location : LOW POWER DUAL OP-AMP							
2	2561-5211-0241	U4 IC TLP521-1 PHOTO-TRANSISTOR	2.00000	PCS	IN	P	Y	N	0.00%
19/08/2003									
		Location : RANK GR "TOSHIBA"							
2	3010-2120-2471	PC1,PC2. NPN GENERAL PURPOSE TRANSISTOR	2.00000	PCS	IN	P	Y	N	0.00%
23/03/2004									
		Location : 2SC2120Y (TE2) "TOSHIBA" TO-92							
2	3010-3904-0001	Q12,Q14. NPN TRANSISTOR 2N3904 "ON"	1.00000	PCS	IN	P	Y	N	0.00%
27/08/2003									
		Location : Q22.							
2	3023-0950-2471	POWER PNP TRANSISTOR	5.00000	PCS	IN	P	Y	N	0.00%
24/03/2004									
		Location : 2SA950Y (TE2) "TOSHIBA" TO-92							
2	3201-4148-9002	Q13,Q15-Q17,Q24. Si SIGNAL DIODE 1N4148 TNR	5.00000	PCS	IN	P	Y	N	0.00%
15/11/2003									
		Location : "VISHAY"							
2	3261-1511-0002	D10,D11,D14-D15,D18. ZENER DIODE 15V 1W TNR	2.00000	PCS	IN	P	Y	N	0.00%
22/05/2003									
		Location : "1N4744A"							
2	3601-3201-1301	ZD5,ZD6. METAL OXIDE VARISTOR	1.00000	PCS	IN	P	Y	N	0.00%
10/01/2004									
		Location : "Littelfuse" V320LA20A							
		M2							

Page: 17

Ref. No:  
 Model #: SPS-9600-327 Description: 1-15Vdc, 60A SWITCHING MODE POWER SUPPLY W/DIGITAL METERS  
 Rev Date: 08/12/2004  
 Specification:  
 Verify :  
 Brand Name :  
 Type : \*

Level	Code #	Description/Remarks	Usage	U/M	Op	PMS	Iss	Sp	Scrp
Net.Wt	Ftr	Rev Date							
2	3640-5006-2291	POLYSWITCH RUE500 30V 5A	1.00000	PCS	IN	P	Y	N	0.00%
10/01/2004		"RAYCHEM"							
2	3680-0803-0002	Location : F4 FUSE 8A 250V W/UL,CSA & T-MARK	1.00000	PCS	IN	P	Y	N	0.00%
22/05/2003		30mm STANDARD GLASS TUBE							
2	3681-1004-1602	Location : F5 FUSE 10A 250V "BUSSMANN" MDA	2.00000	PCS	IN	P	Y	N	0.00%
26/09/2003		1/4" TIME-LAG CERAMIC TUBE							
2	4351-0903-5215	Location : F1,F2. WIRE ASSEMBLY UL1007 #22	1.00000	PCS	IN	P	Y	N	0.00%
07/11/2003		3PINX90mm W/STM HOUSING X 2							
2	4541-9600-0212	Location : CN1B PCB FOR SPS-9600 (DC-DC)	1.00000	PCS	IN	P	Y	N	0.00%
10/11/2004		REV.2 FR4 94V0 1.6mm THK.							
2	4541-9600-1112	PCB FOR SPS-9600 (CONTROL)	1.00000	PCS	IN	P	Y	N	0.00%
27/02/2004		REV.1 1/O FR4 94V0 SINGLE SIDE							
2	4700-0500-5155	WIRE UL1007 AWG#22 BLACK	1.00000	PCS	IN	P	Y	N	0.00%
08/03/2004		3+50+3 ENDS W/SOLDER DIPPED							
2	4700-0502-5155	Location : O/P"->SENSE"- WIRE UL1007 AWG#22 RED	1.00000	PCS	IN	P	Y	N	0.00%
08/03/2004		3+50+3 ENDS W/SOLDER DIPPED							
2	4700-0600-5155	Location : O/P"+>SENSE"+ WIRE UL1007 AWG#22 BLACK	1.00000	PCS	IN	P	Y	N	0.00%
08/03/2004		3+60+3mm ENDS W/SOLDER DIPPED							
2	4700-0601-2274	Location : V/S- WIRE UL1015 AWG#16 BROWN	1.00000	PCS	IN	P	Y	N	0.00%
08/11/2003		5+60+6mm 5mm W/SOLDER DIPPED							
2	4700-0602-5155	Location : PT2B WIRE UL1007 AWG#22 RED	1.00000	PCS	IN	P	Y	N	0.00%
08/03/2004		3+60+3mm ENDS W/SOLDER DIPPED							
2	4700-0606-2274	Location : +5V. WIRE UL1015 AWG#16 BLUE	1.00000	PCS	IN	P	Y	N	0.00%
08/11/2003		5+60+6mm 5mm W/SOLDER DIPPED							
2	4700-0701-2273	Location : PT1B WIRE UL1015 AWG#16 BROWN	1.00000	PCS	IN	P	Y	N	0.00%
10/01/2004		6+70+5 5mm W/SOLDER DIPPED							
2	4700-0706-2273	Location : L/O->AC/L WIRE UL1015 AWG#16 BLUE	1.00000	PCS	IN	P	Y	N	0.00%
29/11/2003		6+70+5 5mm W/SOLDER DIPPED							
2	4700-0900-0277	Location : N/O->AC/N. WIRE UL1015 AWG#10 BLACK	2.00000	PCS	IN	P	Y	N	0.00%
18/06/2004		5+90+5mm ENDS W/SOLDER DIPPED							
		Location : G1,G2.							

Page: 18

Ref. No:  
 Model #: SPS-9600-327  
 Rev Date: 08/12/2004

Description: 1-15Vdc, 60A SWITCHING MODE POWER SUPPLY W/DIGITAL METERS

Verify :

Specification:

Type : \*

Brand Name :

Level	Code #	Description/Remarks	Usage	U/M	Op	PMS	Iss	Sp	Scrp
Net.Wt	Ftr	Rev Date							
2	4751-0051-4405	BARE JUMPER WIRE	13.00000	PCS	IN	P	Y	N	0.00%
10/01/2004		DIA. 0.6mm L=5mm Location : J18,J11,J10,J9,J4,J1, J19,J20,VR6,VR7,CN10,CN11.							
2	4751-0101-4405	BARE JUMPER WIRE	5.00000	PCS	IN	P	Y	N	0.00%
24/10/2003		DIA. 0.6mm L=10mm Location : J2,J5,J7,J13,J21.							
2	4751-0179-3022	BARE JUMPER WIRE DIA 0.6mm	3.00000	PCS	IN	P	Y	N	0.00%
24/10/2003		5+7+5mm Location : J3,J16,J20.							
2	4751-0269-4022	BARE JUMPER WIRE	2.00000	PCS	IN	P	Y	N	0.00%
07/11/2003		DIA. 1.81mm L=5+16+5mm Location : J6A,J6B.							
2	4751-0369-4022	BARE JUMPER WIRE	1.00000	PCS	IN	P	Y	N	0.00%
07/11/2003		DIA. 1.81mm L=5+26+5mm Location : J6							
2	4751-0409-4044	BARE JUMPER WIRE	0.38500	PCS	IN	P	Y	N	0.00%
10/01/2004		DIA. 1.8mm L=10+20+10mm							
2	4761-0009-3810	PVC TUBE DIA. 3.76mm W/UL	0.22000	M	IN	P	Y	N	0.00%
28/11/2003		VW-1 TRANSPARENT "KYOWA" Location : L/O,N/O,PT1B,PT2B.							
2	4767-0009-2161	TEFLON SLEEVING AWG#12 T-TYPE	0.02600	M	IN	P	Y	N	0.00%
28/11/2003		I.D.=2.16mm TRANSPARENT Location : J6							
2	4770-3009-5000	MANGANESE COPPER WIRE (SHUNT)	1.00000	PCS	IN	P	Y	N	0.00%
10/11/2003		DIA. 3.0MMX220MM Location : SH1,SH2,SH3,SH4.							
2	4782-0000-1210	HEAT SHRINKABLE TUBE BLACK	0.02000	M	IN	P	Y	N	0.00%
10/01/2004		DIA. 12MM UL224 Location : M2							
2	4856-1205-1010	SLIDE SWITCH SS-12F07B-G2 1P2T	1.00000	PCS	IN	P	Y	N	0.00%
26/09/2003		0.5A 50V DC Location : SW2							
2	4921-5410-5216	TERMIAL BLOCK 142V-02P 10A	1.00000	PCS	IN	P	Y	N	0.00%
10/01/2004		300VAC 2POLE GREEN "DINKLE" Location : S1							
2	6890-0950-0000	COPPER CONDUCTOR FOR ME-950	4.00000	PCS	IN	P	Y	N	0.00%
10/01/2004		14mm(W)X88.5(L)X1.0mm THK. Location : CC1,CC2.							
2	6890-0950-0001	COPPER CONDUCTOR FOR ME-950	2.00000	PCS	IN	P	Y	N	0.00%
10/01/2004		14mm(W)X54.5(L)X1.0mm THK. Location : CC3							

MANSON ENGINEERING INDUSTRIAL LTD  
Bills Of Material Component Listing

PG ID: MBR00  
Date: 24/01/2005 18:33:56

Page: 19

Ref. No: Description: 1-15Vdc, 60A SWITCHING MODE POWER SUPPLY W/DIGITAL METERS  
Model #: SPS-9600-327  
Rev Date: 08/12/2004 Specification:

Verify : Brand Name :

Level	Code #	Description/Remarks	Usage U/M Op	PMS	Iss	Sp	Scrp
Net.Wt	Ftr	Rev Date					
2	6890-0950-0002	COPPER CONDUCTOR FOR ME-950	2.00000 PCS IN	P	Y	N	0.00%
10/01/2004		14mm(W)X37.5(L)X1.0mm THK.					
2	7031-0524-1001	Location : CC4 250 SLIP-ON RECEPTACLE MOLEX	4.00000 PCS IN	P	Y	N	0.00%
28/11/2003		END-FEED P/N:35725-2410 0.8TAB					
2	7040-0000-1214	Location : PT1B,PT2B,N/O,L/O. FASTON TAB TERMINAL 250	8.00000 PCS IN	P	Y	N	0.00%
24/04/2004		BRASS W/TIN PLATED P-850					
2	7050-0208-2911	Location : PT3B,PT4B,AC/L,AC/N. S/L0,S/L1,S/NO,S/N1 2 PIN SHROUDED HEADER (180)	3.00000 PCS IN	P	Y	N	0.00%
11/09/2004		M241852 "STM" TOP ENTRY TYPE					
2	7050-0310-2911	Location : FAN,C.M,O/I. 3 PIN SHROUDED HEADER (180)	1.00000 PCS IN	P	Y	N	0.00%
22/05/2003		M241853 "STM" TOP ENTRY TYPE					
2	7050-0413-2911	Location : CN5. 4 PIN SHROUDED HEADER (180)	1.00000 PCS IN	P	Y	N	0.00%
26/09/2003		M241854 "STM" TOP ENTRY TYPE					
2	7050-0516-2911	Location : CN3 5 PIN SHROUDED HEADER (180)	1.00000 PCS IN	P	Y	N	0.00%
26/09/2003		M241855 "STM" TOP ENTRY TYPE					
2	7054-0205-2012	Location : CN4. PIN HEADER RIGHT ANGLE 2 PIN	1.00000 PCS IN	P	Y	N	0.00%
24/10/2003		WAFER P=2.54mm 2211R-02G-LP					
2	7054-0410-2012	PIN HEADER RIGHT ANGEL 4PIN	1.00000 PCS IN	P	Y	N	0.00%
15/07/2003		WAFER P=2.54MM PHB101-042A02					
2	7054-0822-2012	PIN HEADER RIGHT ANGLE 8PIN	1.00000 PCS IN	P	Y	N	0.00%
24/10/2003		WAFER P=2.54mm PHB-101-0802A02					
2	7406-3007-5001	SOLDERING PLATE M3X7X5.5	4.00000 PCS IN	P	Y	N	0.00%
05/11/2003		0.5mmTHK.BRASS W/NI PLATING					
2	8030-0010-1910	Location : TAP1,TAP2,TAP3. FUSE CLIP P.C. BOARD TYPE	2.00000 PCS IN	P	Y	N	0.00%
06/06/2003		FOR DIA. 5.2mm FUSE JEF-501					
2	8030-0015-1913	Location : F5. FUSE CLIP P.C. BOARD TYPE	4.00000 PCS IN	P	Y	N	0.00%
22/05/2003		FOR 1/4" FUSE 15A JEF-505					
2	8081-0453-0107	Location : F1,F2. 250 PVC SLEEVE DFA-25-3.5 105C	4.00000 PCS IN	P	Y	N	0.00%
09/08/2003		600V DIC PACKING : 1K PCS/BAG					
2	8710-8400-0099	DRIVER TRANSFORMER ASSEMBLY	1.00000 SET IN	M	N	N	0.00%
22/05/2003		(D8400000, HIT-51-TR3)					
		Location : TR2					



Bills Of Material Component Listing

Page: 20

Ref. No:  
 Model #: SPS-9600-327  
 Rev Date: 08/12/2004

Description: 1-15Vdc, 60A SWITCHING MODE POWER SUPPLY W/DIGITAL METERS

Verify :

Specification:

Type : \*

Brand Name :

Level	Code #	Description/Remarks	Usage U/M Op	PMS	Iss	Sp	Scrp
Net.Wt	Ftr	Rev Date					
3	2120-0019-1601	FERRITE CORE EEL-19 T2	1.00000 PRS TR	P	Y	N	0.00%
23/01/2003							
3	2171-1019-7601	uiac : 2800 "TAK" PHENOLIC TRANSFORMER BOBBIN	1.00000 PCS TR	P	Y	N	0.00%
07/09/2000							
3	4767-0009-0381	EE19X22 (ISEC 10 PIN) TEFLON SLEEVING AWG#28 T-TYPE	0.09000 M TR	P	Y	N	0.00%
27/12/2001							
3	4793-0270-0000	I.D.=0.38mm TRANSPARENT ROUND PEW MAGNET WIRE	0.00200 KGS TR	P	Y	N	0.00%
27/12/2001							
2	8761-9600-0099	DIA. 0.27mm OUTPUT FILTER INDUCTOR	1.00000 SET IN	M	N	N	0.00%
22/05/2003							
3	4793-3500-0000	Location : 0.6uH/60A L12 ROUND PEW MAGNET WIRE	0.04600 KGS TR	P	Y	N	0.00%
17/04/2003							
2	8761-9600-3099	DIA. 3.5mm OUTPUT FILTER INDUCTOR	1.00000 PCS IN	M	N	N	0.00%
22/05/2003							
3	2120-0042-1003	Location : SUB.ASSEMBLY 14UH/60A L11 FERRITE CORE EER-42K-Z MB3	1.00000 PRS TR	P	Y	N	0.00%
11/12/2002							
3	2171-1042-7529	"KAWATETSU" PHENOLIC TRANSFORMER BOBBIN	1.00000 PCS TR	P	Y	N	0.00%
09/08/2003							
3	4793-1200-0000	ER-4201(ER-42X15,14P) "HO JINN" ROUND PEW MAGNET WIRE	0.06700 KGS TR	P	Y	N	0.00%
03/03/2004							
2	8761-9600-4099	DIA. 1.20mm COMMON MODE CHOKE COIL	1.00000 SET IN	M	N	N	0.00%
07/11/2003							
3	2102-2510-1021	Location : 1.8mHX2 SUB.ASSEMBLY L1 FERRITE TOROID CORE	1.00000 PCS TR	P	Y	N	0.00%
08/11/2003							
3	2177-2512-7601	MA055R-25/15/10E OD=25, ID=15 TOROID BOBBIN O.D=25mm, H=12mm	1.00000 SET TR	P	Y	N	0.00%
08/11/2003							
3	4793-1300-0000	MATERIAL=PP, WHITE ROUND PEW MAGNET WIRE	0.01700 KGS TR	P	Y	N	0.00%
28/11/2003							
2	SPS-9600-TR-000	DIA. 1.30mm 155C SPS-9600-000 MATERIAL FOR	1.00000 SET IN	M	N	N	0.00%
14/06/2003							
3	2120-0055-1002	Location : TRANSFORMER (T9600000) TR3 FERRITE CORE EE-55-2 MB3	1.00000 PRS TR	P	Y	N	0.00%
11/12/2002							
3	2171-1055-7511	Ae=353mmsq "KAWATETSU" PHENOLIC TRANSFORMER BOBBIN	1.00000 PCS TR	P	Y	N	0.00%
11/12/2002							
3	4700-0152-0269	EE-5521 (EE-55,14P) "HO JINN" WIRE UL1015 AWG#12 RED	2.00000 PCS TR	P	Y	N	0.00%
29/11/2003							
3	4709-0700-0679	4+15+10mm ENDS W/SOLDER DIPPED WIRE UL1028 AWG#8 BLACK	1.00000 PCS TR	P	Y	N	0.00%
09/03/2004							
		5+70+10mm ENDS W/SOLDER DIPPED					

Ref. No:  
 Model #: SPS-9600-327  
 Rev Date: 08/12/2004

Description: 1-15Vdc, 60A SWITCHING MODE POWER SUPPLY W/DIGITAL METERS

Verify :

Specification:

Type : \*

Brand Name :

Level	Code #	Description/Remarks	Usage	U/M	Op	PMS	Iss	Sp	Scrp
Net.Wt	Ftr	Rev Date							
3	4767-0009-2161	TEFLON SLEEVING AWG#12 T-TYPE	0.02000	M	TR	P	Y	N	0.00%
04/03/2004									
3	4793-0900-0000	I.D.=2.16mm TRANSPARENT ROUND FEW MAGNET WIRE	0.03050	KGS	TR	P	Y	N	0.00%
28/11/2003									
3	6998-0025-0402	DIA. 0.90mm COPPER SHEET 25mm +0.5/-0(W)	0.04500	KGS	TR	P	Y	N	0.00%
03/03/2004									
0	SPS-9600-PA-000	x0.4mm THK SPS-9600-000 MATERIAL FOR	1.00000	SET	PA	M	N	N	0.00%
27/03/2004									
1	7615-0900-0000	PACKING Q.C. PASSED LABEL 37X14mm	1.00000	PCS	PA	P	Y	N	0.00%
08/11/2003									
1	7812-2504-1100	SILVER W/BLACK LETTERING PVC BAG 0.04 X 250 X 110 MM	1.00000	PCS	PA	P	Y	N	0.00%
08/11/2003									
1	7812-3604-1300	Location : W/RECYCLE MARK USER MANUAL PVC BAG 0.04 X 360 X 130 MM	1.00000	PCS	PA	P	Y	N	0.00%
08/11/2003									
1	7812-5104-3500	Location : W/RECYCLE MARK POWER CORD PVC BAG 0.04 X 510 X 350 MM	1.00000	PCS	PA	P	Y	N	0.00%
08/11/2003									
1	7841-0051-6510	Location : W/RECYCLE MARK, WARNING MAIN POWER POLYFOAM SHEET FOR HIT-51	2.00000	PCS	PA	P	Y	N	0.00%
08/11/2003									
1	7841-9600-0000	SIZE: 140 X 45 X 45 mm THK. POLYFOAM SHEET FOR SPS-9600	2.00000	PCS	PA	P	Y	N	0.00%
08/11/2003									
1	7841-9600-0001	SIZE: 449 X 260 X 20 mm THK. POLYFOAM SHEET FOR SPS-9600	2.00000	PCS	PA	P	Y	N	0.00%
08/11/2003									
1	7861-9601-0000	SIZE: 449 X 100 X 20 mm THK. OUTER CARTON FOR SPS-9600	0.50000	PCS	PA	P	Y	N	0.00%
08/11/2003									
1	7881-9601-0000	DOUBLE CORRUGATE B=C RETAIL BOX FOR SPS-9600	1.00000	PCS	PA	P	Y	N	0.00%
08/11/2003									
1	7990-0005-0001	DOUBLE CORRUGATE A=B SILICON GEL 5gm PAPER PACK	1.00000	PCS	PA	P	Y	N	0.00%
08/11/2003									
0	SPS-9600-PFC-000	SPS-9600-PFC-000 MATERIAL FOR	1.00000	SET	PFC	M	N	N	0.00%
27/03/2004									
1	SPS-9600-PFC-CA-000	PFC MODULE SPS-9600-PFC-000 MATERIAL FOR	1.00000	SET	CA	M	N	N	0.00%
22/05/2003									
2	2160-0403-0901	CASING FERRITE BEAD C6RH4X2X3	7.00000	PCS	CA	P	Y	N	0.00%
28/11/2003									
2	3111-2837-2404	Location : (LIGO) L15-L20,L25. N-CHANNEL POWER MOSFET	2.00000	PCS	CA	P	Y	N	0.00%
14/06/2003									
2	3232-1560-9047	Location : 2SK2837 "TOSHIBA" Q6,Q7. FAST RECOVERY RECTIFIER	1.00000	PCS	CA	P	Y	N	0.00%
26/09/2003									
		Location : MUR1560 600V/15A TO-220AC "ON" D1							

Bills Of Material Component Listing

Page: 22

Ref. No:  
 Model #: SPS-9600-327  
 Rev Date: 08/12/2004

Description: 1-15Vdc, 60A SWITCHING MODE POWER SUPPLY W/DIGITAL METERS

Verify :  
 Type : \*

Specification:  
 Brand Name :

Level	Code #	Description/Remarks	Usage	U/M	Op	PMS	Iss	Sp	Scrp
Net.Wt	Ftr	Rev Date							
2	6701-9601-0003	HEAT SINK FOR SPS-9600	1.00000	PCS	CA	P	Y	N	0.00%
10/01/2004		W=68, H=10 L=113.9MM							
2	7204-3006-1001	Location : HT2 SCREW M3X6X0.5 W/Ni PLATING	1.00000	PCS	CA	P	Y	N	0.00%
15/11/2003		PAN HEAD CROSS DRIVER							
2	7204-3006-1101	Location : D1 SCREW M3X6X0.5 W/Ni PLATING	1.00000	PCS	CA	P	Y	N	0.00%
15/11/2003		BINDING HEAD CROSS DRIVER							
2	7204-3008-1001	SCREW M3X8X0.5 W/Ni PLATING	3.00000	PCS	CA	P	Y	N	0.00%
15/11/2003		PAN HEAD CROSS DRIVER							
2	7204-3010-1001	Location : HT3,HT1. SCREW M3X10X0.5 W/Ni PLATING	2.00000	PCS	CA	P	Y	N	0.00%
15/11/2003		PAN HEAD CROSS DRIVER							
2	7300-3008-0502	Location : Q6,Q7. PLAN WASHER M3X8X0.5	6.00000	PCS	CA	P	Y	N	0.00%
10/01/2004		W/ZINC PLATING							
2	7303-3005-0702	Location : Q6,Q7,D1,HT1,HT2. SPRING WASHER M3X5X0.7	3.00000	PCS	CA	P	Y	N	0.00%
19/06/2003		W/ZINC PLATING							
2	7304-3006-0900	Location : Q6,Q7,D1. EXTERNAL TOOTH WASHER M3X6X0.9	3.00000	PCS	CA	P	Y	N	0.00%
10/01/2004		HT2,HT1.							
2	8070-0030-0001	SILICON RUBBER	0.00700	M	CA	P	Y	N	0.00%
28/11/2003		28CMX100CMX0.3MM THK							
2	8070-0030-0111	Location : Q6,Q7,D1. SILICON RUBBER 65X30X0.3mmTHK	1.00000	PCS	CA	P	Y	N	0.00%
19/06/2003		Q6,Q7,D1.							
2	8070-0043-0107	Location : Q6,Q7,D1. FLAME RETARDANT PP FORMEX GK17	1.00000	PCS	CA	P	Y	N	0.00%
07/11/2003		105X10X0.43mmTHK. UL 94V0							
2	8070-0043-0117	Location : HT2 FLAME RETARDANT PP FORMEX GK17	1.00000	PCS	CA	P	Y	N	0.00%
11/01/2004		104X10X0.43mmTHK. UL 94V0							
1	SPS-9600-PFC-IN-000	Location : HI2 SPS-9600-PFC-000 MATERIALS FOR	1.00000	SET	IN	M	N	N	0.00%
22/05/2003		INSERTION							
2	0502-1501-1622	THERMAL FUSE CEMENT RESISTOR	2.00000	PCS	IN	P	Y	N	0.00%
20/05/2004		15ohm +/-5% 133C 2.2W, 10A							
2	0503-2201-0611	Location : R3,R4. FUSIBLE METAL FILM RESISTOR	2.00000	PCS	IN	P	Y	N	0.00%
14/06/2003		1/4W 22ohm +/-5% "HK RESISTOR"							
2	0512-2201-0611	Location : R16,R17. CARBON FILM RESISTOR	1.00000	PCS	IN	P	Y	N	0.00%
12/02/2004		1/8W 22ohm +/-5% T/B							
		Location : R32							

Page: 23

Ref. No:  
 Model #: SPS-9600-327 Description: 1-15Vdc, 60A SWITCHING MODE POWER SUPPLY W/DIGITAL METERS  
 Rev Date: 08/12/2004  
 Specification:  
 Verify :  
 Brand Name :  
 Type : \*

Level	Code #	Description/Remarks	Usage	U/M	Op	PMS	Iss	Sp	Scrp
Net.Wt	Ftr	Rev Date							
2	0512-2204-0611	CARBON FILM RESISTOR	1.00000	PCS	IN	P	Y	N	0.00%
22/05/2003		1/8W 22Kohm +/-5% T/B							
		Location : R15							
2	0512-3302-0611	CARBON FILM RESISTOR	1.00000	PCS	IN	P	Y	N	0.00%
08/07/2003		1/8W 330ohm +/-5% T/B							
		Location : R22.							
2	0512-5103-0611	CARBON FILM RESISTOR	1.00000	PCS	IN	P	Y	N	0.00%
14/06/2003		1/8W 5.1Kohm +/-5% T/B							
		Location : R18.							
2	0512-6800-0611	CARBON FILM RESISTOR	1.00000	PCS	IN	P	Y	N	0.00%
14/06/2003		1/8W 6.8ohm +/-5% T/B							
		Location : R33.							
2	0513-1003-0611	CARBON FILM RESISTOR	1.00000	PCS	IN	P	Y	N	0.00%
14/06/2003		1/4W 1Kohm +/-5% T/B							
		Location : R6							
2	0513-1006-0611	CARBON FILM RESISTOR	1.00000	PCS	IN	P	Y	N	0.00%
29/10/2003		1/4W 1Mohm +/-5% T/B							
		Location : R31.							
2	0513-2205-0611	CARBON FILM RESISTOR	2.00000	PCS	IN	P	Y	N	0.00%
29/10/2003		1/4W 220Kohm +/-5% T/B							
		Location : R7,R8.							
2	0513-3302-0611	CARBON FILM RESISTOR	1.00000	PCS	IN	P	Y	N	0.00%
08/07/2003		1/4W 330ohm +/-5% T/B							
		Location : R5							
2	0521-1204-0411	METAL FILM RESISTOR	1.00000	PCS	IN	P	Y	N	0.00%
15/07/2003		1/8W 12Kohm +/-1% T/B							
		Location : R11							
2	0521-3905-0411	METAL FILM RESISTOR	1.00000	PCS	IN	P	Y	N	0.00%
27/05/2004		1/8W 390Kohm +/-1% T/B							
		Location : R14.							
2	0521-4305-0411	METAL FILM RESISTOR	2.00000	PCS	IN	P	Y	N	0.00%
09/08/2003		1/8W 430Kohm +/-1%							
		Location : R9,R10.							
2	0522-1106-0411	METAL FILM RESISTOR	1.00000	PCS	IN	P	Y	N	0.00%
22/05/2003		1/4W 1.1Mohm +/-1% T/B							
		Location : R30							
2	0522-6205-5411	METAL FILM RESISTOR 1/4W	1.00000	PCS	IN	P	Y	N	0.00%
12/07/2003		620Kohm +/-1% 100PPM T/B "KOA"							
		Location : R13							
2	0522-6805-5411	METAL FILM RESISTOR 1/4W	1.00000	PCS	IN	P	Y	N	0.00%
12/07/2003		680Kohm +/-1% 100PPM T/B "KOA"							
		Location : R12							

Page: 24

Ref. No:  
 Model #: SPS-9600-327  
 Rev Date: 08/12/2004

Description: 1-15Vdc, 60A SWITCHING MODE POWER SUPPLY W/DIGITAL METERS

Specification:

Verify :

Brand Name :

Type : \*

Level	Code #	Description/Remarks	Usage	U/M	Op	PMS	Iss	Sp	Scrp
Net.Wt	Ftr	Rev Date							
2	0522-8503-0411	METAL FILM RESISTOR 1/4W	1.00000	PCS	IN	P	Y	N	0.00%
22/05/2003		8.5Kohm +/-1% T/B							
		Location : R14							
2	0535-0100-0611	METAL OXIDE RESISTOR 0.1ohm 2W	2.00000	PCS	IN	P	Y	N	0.00%
22/05/2003		+/-5% LEAD LENGTH=35mm							
		Location : R23,R24							
2	1011-1042-1261	CERAMIC CAPACITOR 0.01UF 500V	2.00000	PCS	IN	P	Y	N	0.00%
22/05/2003		+80%/-20%							
		Location : C31,C9.							
2	1011-1051-0171	CERAMIC CAPACITOR 0.1UF 50V	4.00000	PCS	IN	P	Y	N	0.00%
24/10/2003		+80%/-20%							
		Location : C23,C47,C30,C7.							
2	1011-2231-0191	CERAMIC CAPACITOR 2200PF 100V	1.00000	PCS	IN	P	Y	N	0.00%
22/05/2003		+80%/-20%							
		Location : C13							
2	1011-2233-0261	CERAMIC CAPACITOR 2200PF 500V	1.00000	PCS	IN	P	Y	N	0.00%
29/10/2003		+/-10% Y5P							
		Location : C32							
2	1011-4712-0291	CERAMIC CAPACITOR 47PF 1KV	1.00000	PCS	IN	P	Y	N	0.00%
13/12/2003		+/-20%							
		Location : C14							
2	1011-4723-0731	CERAMIC CAPACITOR 470PF 2KV	4.00000	PCS	IN	P	Y	N	0.00%
14/06/2003		+/-10% Y5P							
		Location : C26,C28,C35,C45.							
2	1011-5021-0171	CERAMIC CAPACITOR 500PF 50V	1.00000	PCS	IN	P	Y	N	0.00%
22/05/2003		+80%/-20%							
		Location : C12							
2	1015-4732-0231	CERAMIC AC CAPACITOR	1.00000	PCS	IN	P	Y	N	0.00%
27/08/2003		4700PF 250VAC +/-20% Y1							
		Location : C20							
2	1021-1062-0171	ELECT. CAPACITOR 1UF 50V	1.00000	PCS	IN	P	Y	N	0.00%
22/05/2003		+/-20% DIM. 5 X 11 MM							
		Location : C22							
2	1021-1072-0171	ELECT. CAPACITOR 10UF 50V	3.00000	PCS	IN	P	Y	N	0.00%
09/08/2003		+/-20% DIM. 5 X 11 MM "GS"							
		Location : C36,C37,C29.							
2	1021-1082-0151	ELECT. CAPACITOR 100UF 25V	1.00000	PCS	IN	P	Y	N	0.00%
23/05/2003		+/-20% DIM. 6.3 X 11 MM							
		Location : C34							
2	1021-2282-0311	ELECT. CAPACITOR 220UF 25V	1.00000	PCS	IN	P	Y	N	0.00%
27/08/2003		105C +/-20% DIM. 8 X 17mm							
		Location : C25.							

Page: 25

Ref. No:  
 Model #: SPS-9600-327  
 Rev Date: 08/12/2004

Description: 1-15Vdc, 60A SWITCHING MODE POWER SUPPLY W/DIGITAL METERS

Specification:

Verify :

Brand Name :

Type : \*

Level	Code #	Description/Remarks	Usage	U/M	Op	PMS	Iss	Sp	Scrp
Net.Wt	Ftr	Rev Date							
2	1021-4772-0151	ELECT. CAPACITOR 47UF 25V	2.00000	PCS	IN	P	Y	N	0.00%
15/07/2003		+/-20% DIM. 5 X 11 MM							
		Location : C10,C27.							
2	1021-4772-0301	ELECT CAPACITOR 47uF 16V	1.00000	PCS	IN	P	Y	N	0.00%
22/05/2003		+/-20% DIM.5X11mm 105C P=2mm							
		Location : C24							
2	1021-4782-0311	ELECT. CAPACITOR 470UF 25V	1.00000	PCS	IN	P	Y	N	0.00%
10/12/2003		+/-20% 105C DIM. 10X17MM							
		Location : C33							
2	1021-4782-2301	ELECT. CAPACITOR 470uF 16V	1.00000	PCS	IN	P	Y	N	0.00%
29/11/2003		105C +/-20% 8X9mm							
		Location : C46							
2	1023-4782-0421	ELECT CAPACITOR 470uF 450V	2.00000	PCS	IN	P	Y	N	0.00%
23/10/2003		105C +/-20% DIM.35X50mm							
		Location : C18,C19.							
2	1035-1062-0241	METALLIZED CAPACITOR	1.00000	PCS	IN	P	Y	N	0.00%
19/08/2003		1UF 275VAC X2							
		Location : C4							
2	1035-1542-0241	METALLIZED CAP. 0.015uf 275VAC	1.00000	PCS	IN	P	Y	N	0.00%
06/06/2003		X2 +/-10% PITCH=10.0mm							
		Location : C38							
2	1061-3363-0251	METALLIZED POLYESTER CAP.	2.00000	PCS	IN	P	Y	N	0.00%
14/06/2003		3.3uf 400VDC +/-10% 31X18X9mm							
		Location : C5,C6.							
2	1061-4743-4271	METALLIZED POLYESTER CAP.	1.00000	PCS	IN	P	Y	N	0.00%
22/05/2003		0.047UF 630V +/-10% PITCH=10mm							
		Location : C21							
2	1095-1062-1171	MONO CAPACITOR 1UF / 50V	1.00000	PCS	IN	P	Y	N	0.00%
22/05/2003		+/-20% "DUANHUA"							
		Location : C11							
2	1501-5021-3312	POWER INDUCTOR 3.3uH +/-20%	3.00000	PCS	IN	P	Y	N	0.00%
23/05/2003		500mA 3R3M-A12X-BL-N							
		Location : L9,L10,L13.							
2	2160-0403-0901	FERRITE BEAD C6RH4X2X3	2.00000	PCS	IN	P	Y	N	0.00%
10/01/2004		(LIGO)							
		Location : L25,L28.							
2	2531-7805-0009	IC 78L05 TO-92 POSITIVE DC	1.00000	PCS	IN	P	Y	N	0.00%
14/06/2003		VOLTAGE REGULATOR							
		Location : U10							
2	2531-7805-3068	IC 7805CV "SGS" POSITIVE DC	1.00000	PCS	IN	P	Y	N	0.00%
27/08/2003		VOLTAGE REGULATORS							
		Location : U11							

Page: 26

Ref. No:  
 Model #: SPS-9600-327  
 Rev Date: 08/12/2004

Description: 1-15Vdc, 60A SWITCHING MODE POWER SUPPLY W/DIGITAL METERS

Verify :

Specification:

Type : \*

Brand Name :

Level	Code #	Description/Remarks	Usage	U/M	Op	PMS	Iss	Sp	Scrp
Net.Wt	Ftr	Rev Date							
2	2533-0243-0458	PWM SWITCH TOP243Y	1.00000	PCS	IN	P	Y	N	0.00%
22/05/2003									
		Location : TOPSWITCH-GX							
2	2534-3262-0041	IC MC33262P "ON"	1.00000	PCS	IN	P	Y	N	0.00%
22/05/2003									
		Location : POWER FACTOR CONTROLLER							
2	3010-2120-2471	NPN GENERAL PURPOSE TRANSISTOR	1.00000	PCS	IN	P	Y	N	0.00%
23/03/2004									
		Location : 2SC2120Y(Te2) "TOSHIBA" TO-92							
2	3023-0950-2471	POWER PNP TRANSISTOR	1.00000	PCS	IN	P	Y	N	0.00%
24/03/2004									
		Location : Q2							
2	3222-2505-9510	2SA950Y(Te2) "TOSHIBA" TO-92	1.00000	PCS	IN	P	Y	N	0.00%
22/05/2003									
		Location : Q3							
2	3231-4003-9551	BRIDGE RECTIFIER TS25P05G	6.00000	PCS	IN	P	Y	N	0.00%
19/07/2004									
		Location : 600V/25A TS6P "TS"							
2	3231-4005-9551	FAST RECOVERY RECTIFIER	1.00000	PCS	IN	P	Y	N	0.00%
17/07/2004									
		Location : 200V/1A UF4003 "VISHAY" DO-41							
2	3261-5600-5521	FAST RECOVERY RECTIFIER	1.00000	PCS	IN	P	Y	N	0.00%
22/05/2003									
		Location : D4-D9.							
2	3261-5600-5521	ZENER DIODE 5V6 0.5W DISCRETE	1.00000	PCS	IN	P	Y	N	0.00%
22/05/2003									
		Location : D1.							
2	3262-2025-0551	"HITACHI" HZ6A3	1.00000	PCS	IN	P	Y	N	0.00%
29/03/2004									
		Location : ZD2							
2	4214-1030-1144	TRANSIENT VOLTAGE SUPPRESSOR	1.00000	PCS	IN	P	Y	N	0.00%
19/06/2003									
		Location : DISCRETE P6KE200A 200V/5W							
2	4543-9600-0112	RELAY ME-23-12PS DC12V 1P1T	1.00000	PCS	IN	P	Y	N	0.00%
07/01/2004									
		Location : ZD1							
2	4700-0900-2273	30V/10A HIGH CAPACITY,MASSUSE	1.00000	PCS	IN	P	Y	N	0.00%
29/10/2003									
		Location : REL1							
2	4700-0952-2273	PCB FOR SPS-9600 (PFC) REV.1	1.00000	PCS	IN	P	Y	N	0.00%
29/10/2003									
		Location : FR4 1.6mm 1oz. DOUBLE SIDE							
2	4761-0009-3810	WIRE UL1015 AWG#16 BLACK	0.16500	M	IN	P	Y	N	0.00%
10/01/2004									
		Location : 5+90+6 5mm W/SOLDER DIPPED							
2	4761-0009-3810	WIRE UL1015 AWG#16 RED	0.16500	M	IN	P	Y	N	0.00%
10/01/2004									
		Location : 5+95+6 5mm SOLDER DIPPED							
2	4761-0009-3810	PVC TUBE DIA. 3.76mm W/UL	0.16500	M	IN	P	Y	N	0.00%
10/01/2004									
		Location : VW-1 TRANSPARENT "KYOWA"							
		Location : PT3A,PT4A.							

Ref. No:  
 Model #: SPS-9600-327  
 Rev Date: 08/12/2004

Description: 1-15Vdc, 60A SWITCHING MODE POWER SUPPLY W/DIGITAL METERS

Specification:

Verify :

Brand Name :

Type : \*

Level	Code #	Description/Remarks	Usage	U/M	Op	PMS	Iss	Sp	Scrp
Net.Wt	Ftr	Rev Date							
2	4767-0009-1071	TEFLON SLEEVING AWG#18 T-TYPE	0.02500	M	IN	P	Y	N	0.00%
10/01/2004		I.D.=1.07mm TRANSPARENT							
		Location : R23,R24,U2.							
2	4767-0009-1501	TEFLON SLEEVING AWG#15 T-TYPE	0.00200	M	IN	P	Y	N	0.00%
28/11/2003		I.D.=1.50mm TRANSPARENT							
2	4767-0029-1501	TEFLON SLEEVING AWG#15 T-TYPE	6.00000	PCS	IN	M	N	N	0.00%
02/12/2003		L=1.5mm +0.5/-0, I.D.=1.50mm							
		Location : D3,D5-D9.							
3	4767-0009-1501	TEFLON SLEEVING AWG#15 T-TYPE	0.00200	M	IN	P	Y	N	0.00%
22/10/2003		I.D.=1.50mm TRANSPARENT							
2	4781-0000-6010	HEAT SHRINKABLE TUBE BLACK	0.03000	M	IN	P	Y	N	0.00%
28/11/2003		DIA.6mm UL224 125C CLASS							
		Location : L9,L10,L13.							
2	6701-0202-0000	HEAT SINK TO-202	1.00000	PCS	IN	P	Y	N	0.00%
26/09/2003		Location : U11							
2	6701-0501-6515	HEAT SINK FOR HIT-501	1.00000	PCS	IN	P	Y	N	0.00%
22/05/2003		Location : U2							
		16X10X12X2mmTHK. ALUMINIUM							
2	6701-9601-0000	HEAT SINK FOR SPS-9600	1.00000	PCS	IN	P	Y	N	0.00%
14/06/2003		Location : U1							
		60x60x13mm 3mmTHK ALUMINIUM							
2	6958-8400-0000	TRANSISTOR SPRING CLIP FOR	1.00000	PCS	IN	P	Y	N	0.00%
15/07/2003		Location : TH1							
		SPS-8400 0.6mm THK. STEEL							
2	7031-0524-1001	250 SLIP-ON RECEPTACLE MOLEX	2.00000	PCS	IN	P	Y	N	0.00%
29/10/2003		Location : D1							
		END-FEED P/N:35725-2410 0.8TAB							
2	7040-0000-1214	FASTON TAB TERMINAL 250	2.00000	PCS	IN	P	Y	N	0.00%
09/08/2003		Location : TP3B-PT2B.							
		BRASS W/TIN PLATED P-850							
2	7050-0208-2911	2 PIN SHROUDED HEADER (180)	2.00000	PCS	IN	P	Y	N	0.00%
09/08/2003		Location : PT1A,PT2A.							
		M241852 "STM" TOP ENTRY TYPE							
2	7050-0310-2911	3 PIN SHROUDED HEADER (180)	1.00000	PCS	IN	P	Y	N	0.00%
22/05/2003		Location : CN2,CN3.							
		M241853 "STM" TOP ENTRY TYPE							
2	7204-3008-1001	SCREW M3X8X0.5 W/Ni PLATING	1.00000	PCS	IN	P	Y	N	0.00%
26/09/2003		Location : CN1A							
		PAN HEAD CROSS DRIVER							
2	7204-3010-1001	SCREW M3X10X0.5 W/Ni PLATING	1.00000	PCS	IN	P	Y	N	0.00%
14/06/2003		Location : U11							
		PAN HEAD CROSS DRIVER							
		Location : BR1.							





Ref. No:  
 Model #: SPS-9600-327  
 Rev Date: 08/12/2004

Description: 1-15Vdc, 60A SWITCHING MODE POWER SUPPLY W/DIGITAL METERS

Specification:

Verify :

Brand Name :

Type : \*

Level	Code #	Description/Remarks	Usage	U/M	Op	PMS	Iss	Sp	Scrp
Net.Wt	Ftr	Rev Date							
3	4790-0270-0000	MAGNET WIRE DIA.0.27mm 2-UEW	0.00170	KGS	TR	P	Y	N	0.00%
09/02/2004									
3	4790-0410-0000	MAGNET WIRE DIA.0.41mm 2-UEW	0.00150	KGS	TR	P	Y	N	0.00%
09/02/2004									
2	8761-0038-2099	COMMON MODE CHOKE COIL	1.00000	SET	IN	M	N	N	0.00%
14/06/2003									
		3.5mH/12A SUB.ASSEMBLY							
		Location : L5							
3	2102-3113-1022	FERRITE TOROID CORE W/COATING	1.00000	PCS	TR	M	N	N	0.00%
15/12/2001									
4	2102-3113-1021	MAO55 R-31/19/13C OD=31.0	1.00000	PCS	TR	P	Y	N	0.00%
15/12/2001		FERRITE TOROID CORE							
3	4767-0009-1501	MAO55 R-31/19/13C OD=31.0	0.21000	M	TR	P	Y	N	0.00%
03/10/2004		TEFLON SLEEVING AWG#15 T-TYPE							
3	4767-0009-1701	I.D.=1.50mm TRANSPARENT	0.16000	M	TR	P	Y	N	0.00%
17/02/2004		TEFLON SLEEVING AWG#14 T-TYPE							
3	4793-1450-0000	I.D.=1.68mm TRANSPARENT	0.02000	KGS	TR	P	Y	N	0.00%
15/12/2001		ROUND PEW MAGNET WIRE							
2	8761-9600-2099	DIA. 1.45mm 155C	2.00000	PCS	IN	M	N	N	0.00%
07/11/2003		INPUT FILTER INDUCTOR							
		SUB.ASSEMBLY 120uH/7A							
		Location : L3,L4.							
3	2101-2310-0601	IRON POWDER TOROID CORE	1.00000	PCS	TR	P	Y	N	0.00%
08/11/2003									
3	4793-1450-0000	T90-52 OD=22.9 ID=14.0 H=9.53	0.02000	KGS	TR	P	Y	N	0.00%
03/03/2004		ROUND PEW MAGNET WIRE							
0	SPS-9600-SP-327	DIA. 1.45mm 155C	1.00000	SET	SP	M	N	N	0.00%
27/03/2004		SPS-9600-327 SPECIALS							
1	4610-2000-7938	POWER CORD VDE PLUG W/INT'L	1.00000	PCS	CA	P	Y	N	0.00%
27/03/2004									
1	7611-9600-3270	TYPE CONNECTOR 2M BLK H05VV-F	1.00000	PCS	SP	P	Y	N	0.00%
27/03/2004		SERIAL NUMBER LABEL FOR							
		SPS-9600-327 (2"X1" SILVER)							
		Location : REAR CABEL							
1	7612-9600-3270	INNER CARTON LABEL FOR	2.00000	PCS	SP	P	Y	N	0.00%
27/03/2004									
		SPS-9600-327 (70X35mm WHITE)							
		Location : RETAIL BOX							
1	7651-8400-0000	CAUTION LABEL (ELECTRIC SHOCK)	3.00000	PCS	SP	P	Y	N	0.00%
27/03/2004									
		18X21mmYELLOW W/BLACK PRINTING							
		Location : HT1,HT2,HT3.							
1	7673-9600-3271	USER MANUAL FOR SPS-9250/9400/	1.00000	PCS	SP	P	Y	N	0.00%
23/10/2004									
1	7674-9600-3271	9600-327 3-LANGUAGES REV.1	1.00000	PCS	SP	P	Y	N	0.00%
23/10/2004		SUPPLEMENTARY USER MANUAL FOR							
1	7691-9600-3270	SPS-9250/9400/9600-327 "DUTCH"	1.00000	PCS	SP	P	Y	N	0.00%
27/03/2004		BAR CODE LABEL SPS-9600-327							
		CONARD B/N510063 , 7030084							
		Location : RETAIL BOX							

Tota

1 Number Of Item: 460

Prepared By : \_\_\_\_\_ Check By : \_\_\_\_\_ Approved By : \_\_\_\_\_

=== End Of Report ===