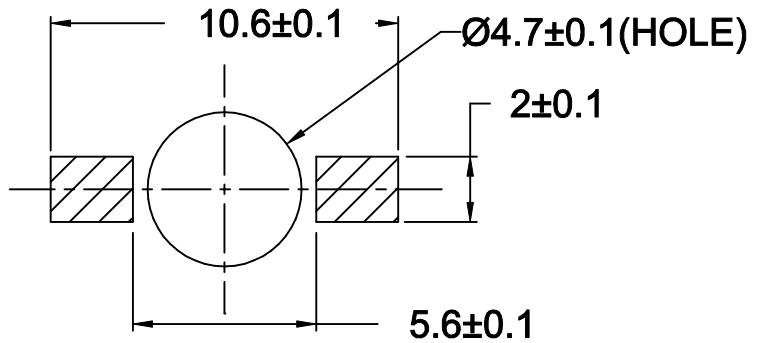
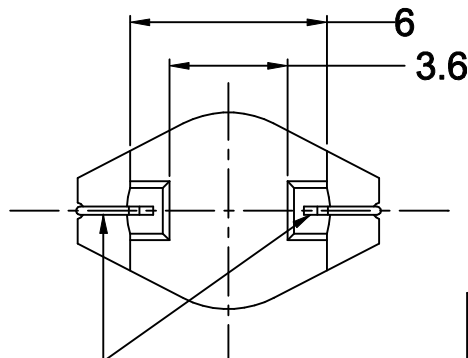
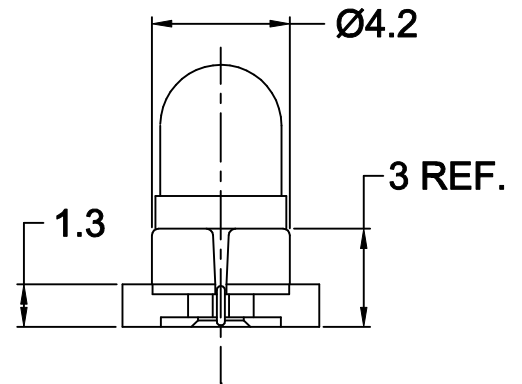
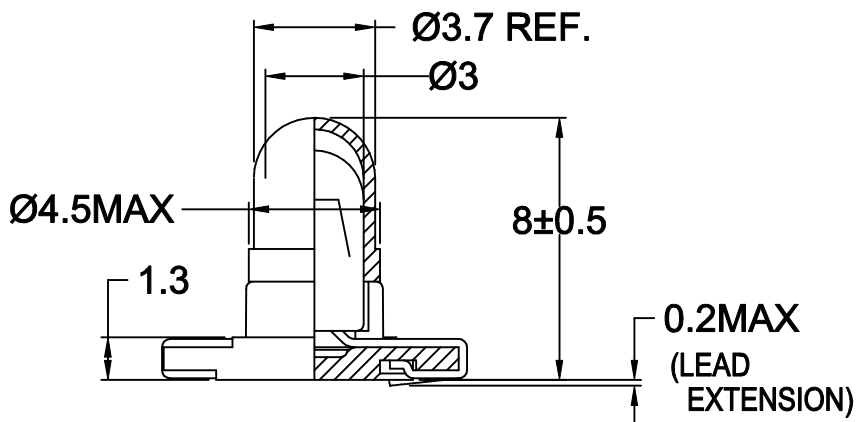


(INCLUDING WIRE)



P.C.B. t=1.6

DIMENSIONS FOR COPPER AREA  
(REFERENCE)



Ø0.25 LEADS  
(SOLDER PLATED)

JKL LAMP NUMBER	VOLTS RATED	AMPS ±10%	*MSCP ±25%	*LUMENS ±25%	AVERAGE LIFE HRS.	FILAMENT TYPE
23	14.0	.040	.150	1.89	**8,000 D.C.	C-2F

\*LAMP ONLY RATING

\*\*DERIVED FROM ACCELERATED TESTING

JKL PART NUMBER	COLOR COORDINATES				LUMINANCE cd/m <sup>2</sup> (SPHERE 100mm)	COLOR (REF.)
	x ± .02	y ± .02	u' ± .02	v' ± .02		
CTB1-23/39-56-7A	N/A	N/A	N/A	N/A	123.8 ± 30%	CLEAR

		DIMENSIONS ARE IN MILLIMETERS TOLERANCE UNLESS OTHERWISE SPECIFIED 1 PL +/- 0.2 2 PL +/- 0.20 ANGLE +/-		<b>COMPONENTS CORPORATION</b>			
THIRD ANGLE PROJECTION		DRAWN BY L. WENGSTROM		APPVD BY DATE J.K. 10/24/03		TITLE <b>T-1 THRU-BOARD LAMP WITH FILTER</b>	
RELEASE & CANCEL P-0308-04		APPVD DATE 10/24/03		SIZE <b>A</b>		FSCM NO. <b>55335</b>	
REV. NO.		DESCRIPTION/ECO NUMBER		APPVD DATE		DRAWING NO. <b>CTB1-23/39-56-7A</b>	
- CAD DRAWING - MANUAL REVISIONS NOT PERMITTED				SCALE <b>NONE</b>		RELEASED DATE <b>10/24/03</b>	
REV. NO.		APPVD DATE		REVISION DATE		REV. NO.	
						SHEET <b>1 of 1</b>	