



# Red Pitaya

---

# User Manual





## Introduction

Red Pitaya is an open source project developed around a reconfigurable measurement instrument in size of a credit card. It can replace many expensive laboratory measurement and control instruments. The users can start using the applications available within the Bazaar free of charge marketplace. This can be achieved with a single click. At the same time they can view and modify the published source code in order to develop new applications and share their results with the community.

The Red Pitaya unit is a network attached device based on Linux operating system. It includes Radio Frequency signal acquisition and generation technologies, FPGA, Digital Signal Processing and CPU processing. Red Pitaya enables everyone to start using technologies, yesterday available only to advanced research laboratories and industry.

## Current version

	<b>Name</b>	<b>Date</b>
<b>Written by</b>	Peter Leban	February 17, 2014
<b>Checked by</b>	Rok Hrovatin, Borut Baričević, Aleš	February 17,2014

## Revision history

<b>Date</b>	<b>Revision description</b>	<b>Written by</b>
<b>February 17, 2014</b>	Original document	Peter Leban

## Table of contents

<b>1</b>	<b>What is in the box.....</b>	<b>5</b>
1.1	Abbreviations in this document.....	5
1.2	Safety symbols and terms .....	6
1.3	Support.....	6
<b>2</b>	<b>Hardware .....</b>	<b>7</b>
2.1	Hardware interfaces .....	7
2.2	Gain setting for the input channels .....	7
<b>3</b>	<b>Getting started.....</b>	<b>9</b>
3.1	Connecting to Red Pitaya.....	9
3.2	Network DHCP configuration.....	9
3.3	Red Pitaya SD card preparation.....	9
3.4	Manual network interface configuration .....	10
3.5	Power on .....	11
3.6	Red Pitaya command line access.....	12
3.6.1	Console (USB) connection .....	12
3.6.1.1	Windows users.....	12
3.6.1.2	Linux users.....	13
3.6.1.3	OS X users.....	13
3.6.2	SSH connection .....	14
3.6.2.1	Windows users.....	14
3.6.2.2	Linux users.....	15
3.6.2.3	OS X users.....	16
3.7	Web browser connection .....	16
<b>4</b>	<b>Web applications .....</b>	<b>17</b>
4.1	Oscilloscope application .....	17
4.2	Signal generator application.....	19
4.3	Spectrum analyzer application .....	21
4.4	PID controller application.....	23
<b>5</b>	<b>Installing applications.....</b>	<b>24</b>
<b>6</b>	<b>Red Pitaya command line utilities.....</b>	<b>25</b>
6.1.1	Signal generator utility.....	25
6.1.2	Signal acquisition utility .....	26
6.1.3	Saving data buffers .....	26
6.1.4	Alternative access to the instrument.....	30
6.1.4.1	Signal generator from Matlab .....	30
6.1.4.2	Signal acquisition from Matlab .....	30
6.1.5	Accessing system registers.....	31
6.1.6	Accessing FPGA registers .....	32

6.1.7	Application development.....	33
<b>7</b>	<b>Support and contact information .....</b>	<b>33</b>

## Index of figures

Figure 1:	Interfaces.....	7
Figure 2:	Jumpers' position. Left ( $\pm 1$ V full scale), right ( $\pm 20$ V full scale).....	8
Figure 3:	Default network configuration (DHCP) with fallback to 192.168.1.100.....	9
Figure 4:	OS installation to Micro SD card.....	10
Figure 5:	Boot up procedure in steps.....	12
Figure 6:	PuTTY SSH connection settings.....	15
Figure 7:	SSH connection via PuTTY.....	15
Figure 8:	Main screen of WEB interface.....	16
Figure 9:	Oscilloscope application.....	17
Figure 10:	Oscilloscope application drop down menus.....	18
Figure 11:	Signal generator drop down menu.....	20
Figure 12:	Spectrum analyzer application.....	22
Figure 13:	PID controller.....	24
Figure 14:	Bazaar – the application marketplace where applications can be installed with a single click.....	24
Figure 15:	Nautilus URL/address bar.....	27
Figure 16:	Password window.....	27
Figure 17:	Root filesystem on Red Pitaya.....	28
Figure 18:	WinSCP login screen.....	29
Figure 19:	Directory content on Red Pitaya.....	29
Figure 20:	File copy destination.....	30

## Index of tables

Table 1:	Abbreviations.....	5
Table 2:	Interfaces and their descriptions.....	7
Table 3:	Console connection parameters.....	12
Table 4:	Functions of Oscilloscope application.....	18
Table 5:	Functions of the signal generator.....	20
Table 6:	Functions of Spectrum analyzer.....	22
Table 7:	Parameters of Signal generator utility.....	25
Table 8:	Parameters of data acquisition tool.....	26

## 1 What is in the box

Instrument:

- Red Pitaya printed circuit board

Optional accessories:

- 5 V / 2 A micro USB power supply
- Preloaded micro SD card
- 2 x SMA – BNC adapters
- 2 x oscilloscope probes


### 1.1 Abbreviations in this document

Abbreviations used in this document are listed in Table 1.

*Table 1: Abbreviations.*

Abbreviation	Description
ADC	Analogue-to-Digital Converter
CPU	Central Processing Unit
DHCP	Dynamic Host Configuration Protocol
FIFO	First In First Out (queue)
FPGA	Field Programmable Gate Array
IP	Internet Protocol address
MAC	Media Access Control address
OS	Operating System
PC	Personal Computer
RF	Radio Frequency
BW	Bandwidth
SMA	SubMiniature version A connector
DAC	Digital-to-Analogue Converter
SD	Secure Digital
LED	Light-emitting Diode
COM	Communication port
SSH	Secure Shell
SFTP	Secure File Transfer Protocol
NFS	Network File System

## 1.2 Safety symbols and terms

The  symbol on the instrument indicates the user should refer to the operating instructions located in this document.

The **CAUTION** heading in this manual explains hazards which could damage the instrument. Such damage may invalidate the warranty.

The **NOTE** heading in this manual gives important explanations on the usage to avoid misunderstandings.

**If the device is used in a manner not specified by the manufacturer, the protection provided by the equipment may be impaired.**

## 1.3 Support

Please address your technical support questions to [info@redpitaya.com](mailto:info@redpitaya.com).



## 2 Hardware

### 2.1 Hardware interfaces

Red Pitaya features several measurement, control and storage interfaces. They are shown in Figure 1.

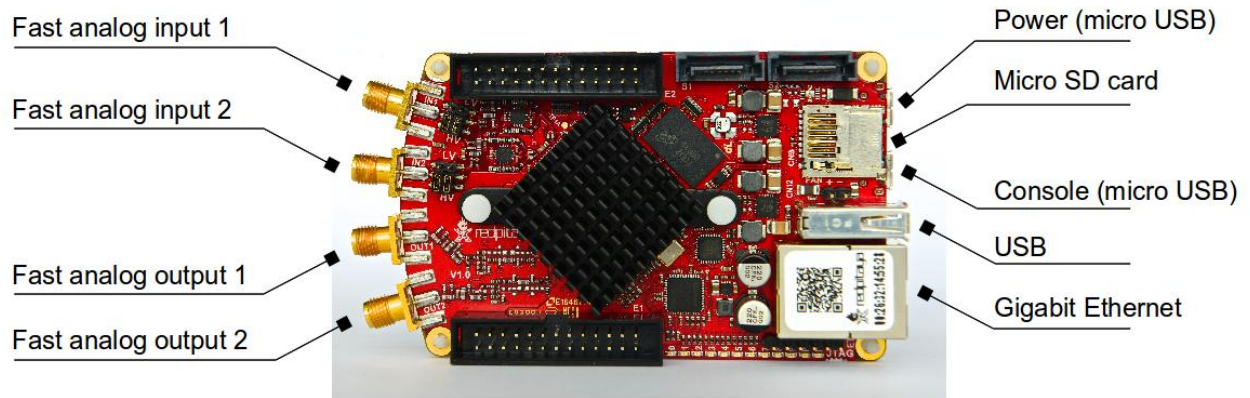


Figure 1: Interfaces.

Table 2: Interfaces and their descriptions.

Name	Type	Connector	Description
IN1 IN2	Input	SMA-F	RF input (High-Z, $1M\Omega // 10\text{ pF}$ )
OUT1 OUT2	Output	SMA-F	RF output ( $50\ \Omega$ )
Ethernet	Full duplex	RJ45	1000Base-T Ethernet connection
USB	Full duplex	A USB	Used for standard USB devices
Micro USB (Console)	Full duplex	Micro B USB	Used for console connection
Micro USB (Power)	Input	Micro B USB	5 V / 2 A power supply
Micro SD	Full duplex	Micro SD slot	Micro SD memory card

### 2.2 Gain setting for the input channels

Gain can be individually adjusted for both input channels. The adjustment is done by bridging the jumpers located behind the corresponding input SMA connector.



*Figure 2: Jumpers' position. Left ( $\pm 1$  V full scale), right ( $\pm 20$  V full scale)*

**CAUTION: Jumper settings are limited to the described positions. Any other configuration or use of different jumper type may damage the product.**

## 3 Getting started

### 3.1 Connecting to Red Pitaya

Red Pitaya is a network attached device acting as a WEB server. Users can connect to Red Pitaya by simply typing its IP address in the WEB browser address bar. Furthermore, the [www.redpitaya.com](http://www.redpitaya.com) webpage (under the “Connect to my Red Pitaya” link) implements an IP address discovery utility which automatically connects to Red Pitayas in your local network. The following paragraphs provide detailed information about Red Pitaya connection.

### 3.2 Network DHCP configuration

By default, Red Pitaya obtains its network settings using DHCP protocol (see Figure 3). If no reply from the DHCP server is obtained within 20 seconds, Red Pitaya will configure its network interface to:

- IP address: 192.168.1.100
- Netmask: 255.255.255.0

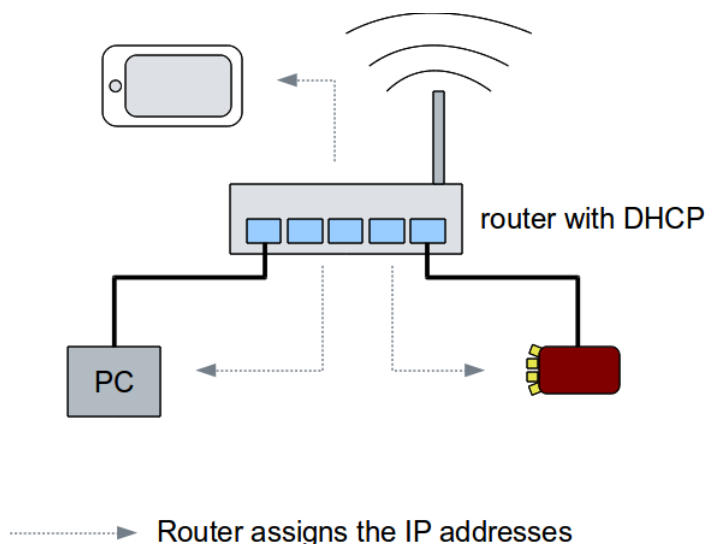


Figure 3: Default network configuration (DHCP) with fallback to 192.168.1.100.

If default configuration is not suitable, follow the instructions in Chapter 3.4 for custom network interface configuration.

### 3.3 Red Pitaya SD card preparation

In case your Red Pitaya package does not contain a micro SD card you need to install the Red Pitaya software to an empty micro SD card. Follow this procedure:

- Download the Red Pitaya SD card image zip file from the [www.redpitaya.com](http://www.redpitaya.com) webpage.
- Insert the Micro SD card into the PC's SD slot. Use an adapter if required.

- Make sure the Micro SD card's capacity does not exceed 32 GB, it is empty and formatted as a FAT32 file system.
- Extract the downloaded Red Pitaya SD card image zip file and copy its content to the Micro SD card.

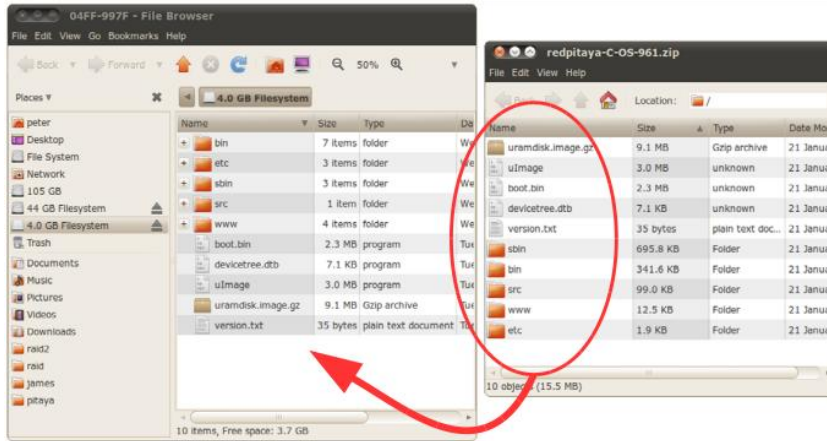


Figure 4: OS installation to Micro SD card.

- Final directory structure in the Micro SD card should look like:

```

/bin
/etc
/sbin
/src
/www
boot.bin
devicetree.dtb
uImage
uramdisk.image.gz
version.txt

```

- Unmount and remove the Micro SD card from your PC and insert it into Red Pitaya.

### 3.4 Manual network interface configuration

To set-up a custom network configuration, unplug the Micro SD card from Red Pitaya and plug it into your computer or tablet. Use a text editor and edit the `/etc/network/interfaces` file. Follow instructions given in the file.

To set a static configuration:

- Comment (with #) the `iface eth0 inet dhcp` line.
- Uncomment the lines below including `iface eth0 inet static`. Set up the network configuration matching your network.

To set a dynamic (DHCP) configuration:

- Uncomment the `iface eth0 inet dhcp` line.
- Comment the lines below including `iface eth0 inet static`.

```
# Red Pitaya network configuration
#

#####
# lo: Loopback interface #
#####

auto lo
iface lo inet loopback

#####
# eth0: Wired Ethernet - 1000Base-T #
#####
#
# Uncomment only one: dynamic or static configuration.
#

# Dynamic (DHCP) IP address
iface eth0 inet dhcp
    udhcpc_opts -t7 -T3

# Static IP address
#iface eth0 inet static
#    address 192.168.1.101
#    netmask 255.255.255.0
#    gateway 192.168.1.1

#####
# wlan0: Wireless USB adapter #
#####

auto wlan0
iface wlan0 inet dhcp
    pre-up wpa_supplicant -B -D wext -i wlan0 -c
/opt/etc/network/wpa_supplicant.conf
    post-down killall -q wpa_supplicant
    udhcpc_opts -t7 -T3
```

- Save the file and plug it into Red Pitaya **before** powering it on.

### 3.5 Power on

To power ON your Red Pitaya, follow the sequence of these steps exactly:

- Step 1: Place your Red Pitaya on a firm flat surface in a well ventilated environment.
- Step 2: Make sure the Micro SD card is inserted to Red Pitaya.
- Step 3: Plug in the network cable.
- Step 4: If required, plug in the USB cable for console connection.
- Step 5: Connect the power cable and check the status of LED diodes: Blue (D) and Green (P)  
LED diodes should be lit. The Orange LED 0 should blink.

Interfaces and steps mentioned above are indicated in Figure 5.

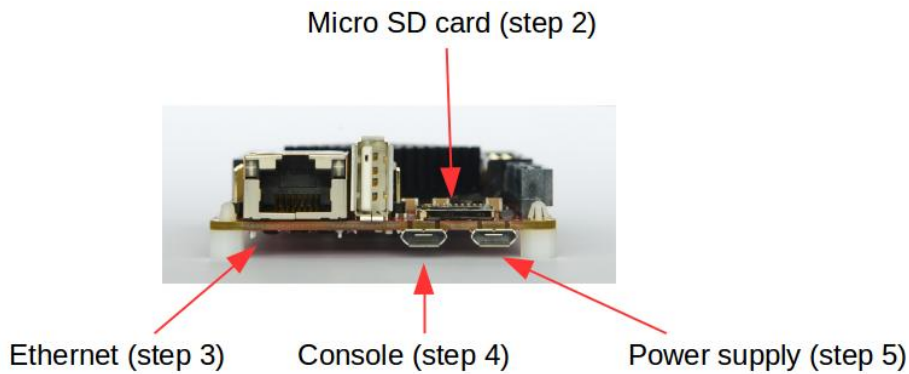


Figure 5: Boot up procedure in steps

## 3.6 Red Pitaya command line access

### 3.6.1 Console (USB) connection

Serial console connection is independent from the Ethernet connection. Use a Micro USB cable to connect your computer with Red Pitaya. Connection instructions will be given for Windows, Linux and OS X users separately.

The serial port configuration is given in Table 3.

Table 3: Console connection parameters.

Parameter	Value
Speed	115200
Data bits	8
Stop bits	1
Parity	None
Flow control	None

Neither username nor password is required. Boot-up sequence finishes with a UNIX shell command prompt:

```
redpitaya>
```

#### 3.6.1.1 Windows users

Download and install the FTD driver to your PC. After installation, a new COM port will appear in the Device Manager which you will use in Hyperterminal or another terminal utility to connect to Red Pitaya.

The FTD driver is available on <http://www.ftdichip.com/Drivers/VCP.htm> webpage.

### 3.6.1.2 Linux users

To access the serial console use one of the serial communication tools e.g. 'minicom'. Follow these steps:

- Connect the USB cable between your PC and Red Pitaya.
- Open a terminal window and check the USB devices (look for »Future Technology Devices«):

```
lsusb | grep Future
Bus 005 Device 002: ID 0403:6015 Future Technology Devices International, Ltd
```

The ttyUSB device must be listed in /dev:

```
user@ubuntu:~$ ll /dev/ttyUSB0
crw-rw---- 1 root dialout 188, 0 2013-11-27 08:09 /dev/ttyUSB0
```

- Following that, run 'minicom' as shown below:

```
user@ubuntu:~$ minicom -D /dev/ttyUSB0
```

- Serial console will open.

**NOTE: Some older Linux distributions (e.g. Ubuntu versions 10.04 and 11.04) do not recognize the FTD USB device automatically. To fix this, issue the following command in the terminal window:**

```
sudo modprobe ftdi_sio vendor=0x0403 product=0x6015
```

**To load the driver automatically at boot, add this line to /etc/modules file:**

```
ftdi_sio vendor=0x0403 product=0x6015
```

### 3.6.1.3 OS X users

Download and install the MAC OS X FTDI driver on your Mac. The FTD driver is available on <http://www.ftdichip.com/Drivers/VCP.htm> webpage.

Then, follow these steps:

- Run XOS terminal (Launchpad → Other → Terminal) and list usbserial device:

```
localhost:/ user$ ls /dev/cu.*  
  
/dev/cu.usbserial-DN003N3N
```

- Connect to Red Pitaya using the screen tool:

```
localhost:~ user$ screen /dev/cu.usbserial-DN003N3N 115200 8N1  
  
redpitaya>
```

To quit the screen tool press the sequence: [CTRL + A] [K] [Y]

### 3.6.2 SSH connection

SSH connection can be established using standard SSH clients such as SSH/openssh (Linux, OS X) or PuTTY (Windows).

Access information for SSH connection:

- Username: root
- Password: root

Connection examples will be given for Windows, Linux and OS X users separately.

#### 3.6.2.1 Windows users

For this example, PuTTY tool was used on Windows XP and Windows 7 Starter OS.

Run PuTTY and enter the Red Pitaya's IP address to »Host Name (or IP address)« field as shown in Figure 6.



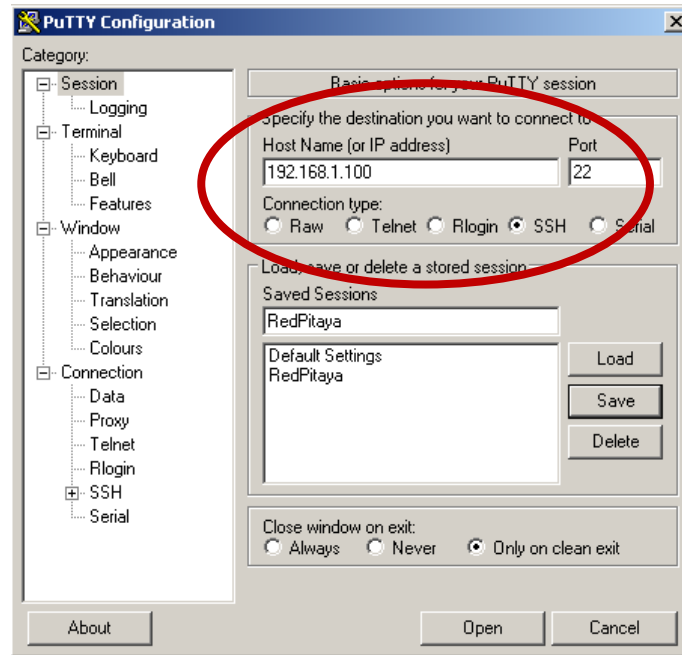


Figure 6: PuTTY SSH connection settings.

If you attempt to connect to Red Pitaya for the first time a security alert will pop-up asking you to confirm the connection. At this time, the SSH-key will be added to the registry in your computer. Command prompt pops-up after login is successful (see Figure 7).

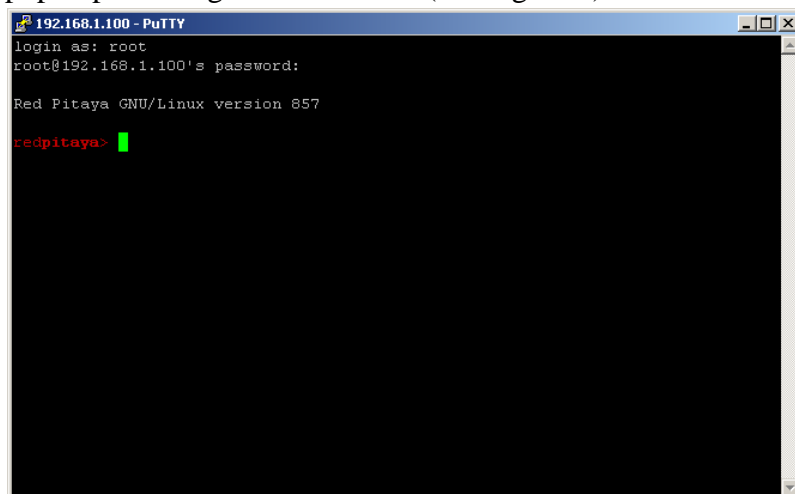


Figure 7: SSH connection via PuTTY.

### 3.6.2.2 Linux users

Start Terminal and type:

```
user@ubuntu:~$ SSH root@192.168.1.100
root@192.168.1.100's password: root

Red Pitaya GNU/Linux version 857

redpitaya>
```

### 3.6.2.3 OS X users

Run XOS terminal: Launchpad → Other → Terminal and type:

```
localhost:~ user$ SSH root@10.0.3.249
The authenticity of host '10.0.3.249 (10.0.3.249)' can't be established.
RSA key fingerprint is e4:02:cd:a8:fd:c7:68:54:f4:26:49:0a:50:c3:c9:fc.
Are you sure you want to continue connecting (yes/no)? yes
Warning: Permanently added '10.0.3.249' (RSA) to the list of known hosts.
root@10.0.3.249's password: root

Red Pitaya GNU/Linux version 908

redpitaya>
```

## 3.7 Web browser connection

Applications running on Red Pitaya are client-server based and can be accessed with a standard WEB browser. Simply type the Red Pitaya's IP address to your WEB browser address bar and wait for the main screen to load (see Figure 8).

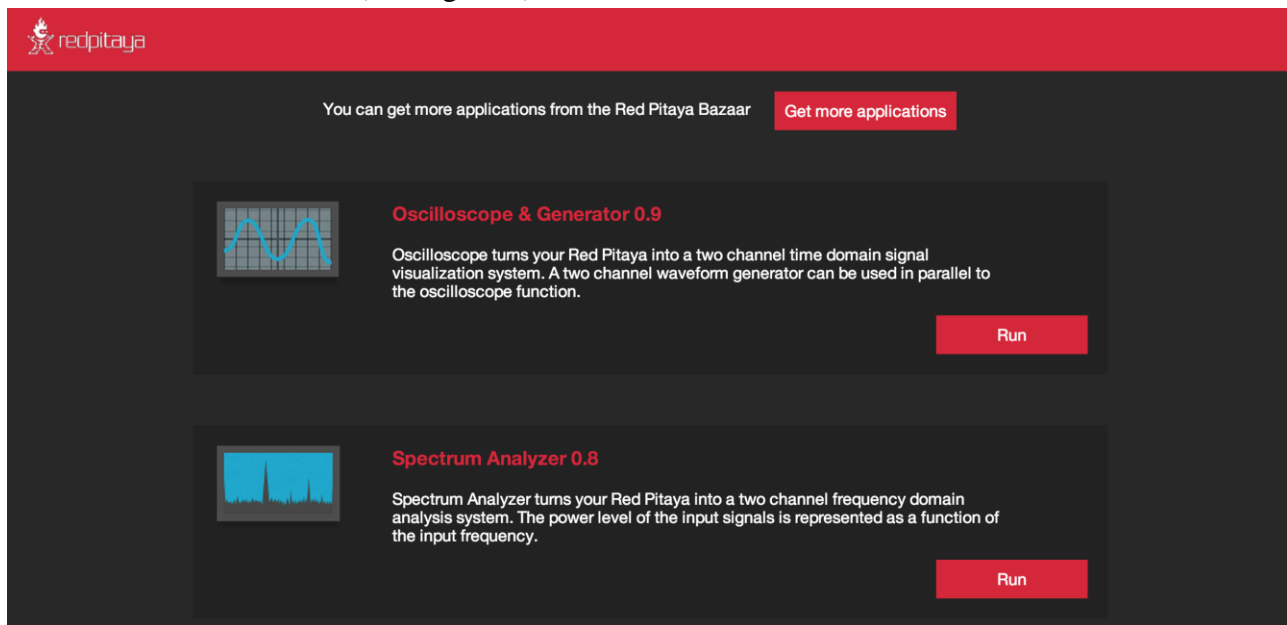


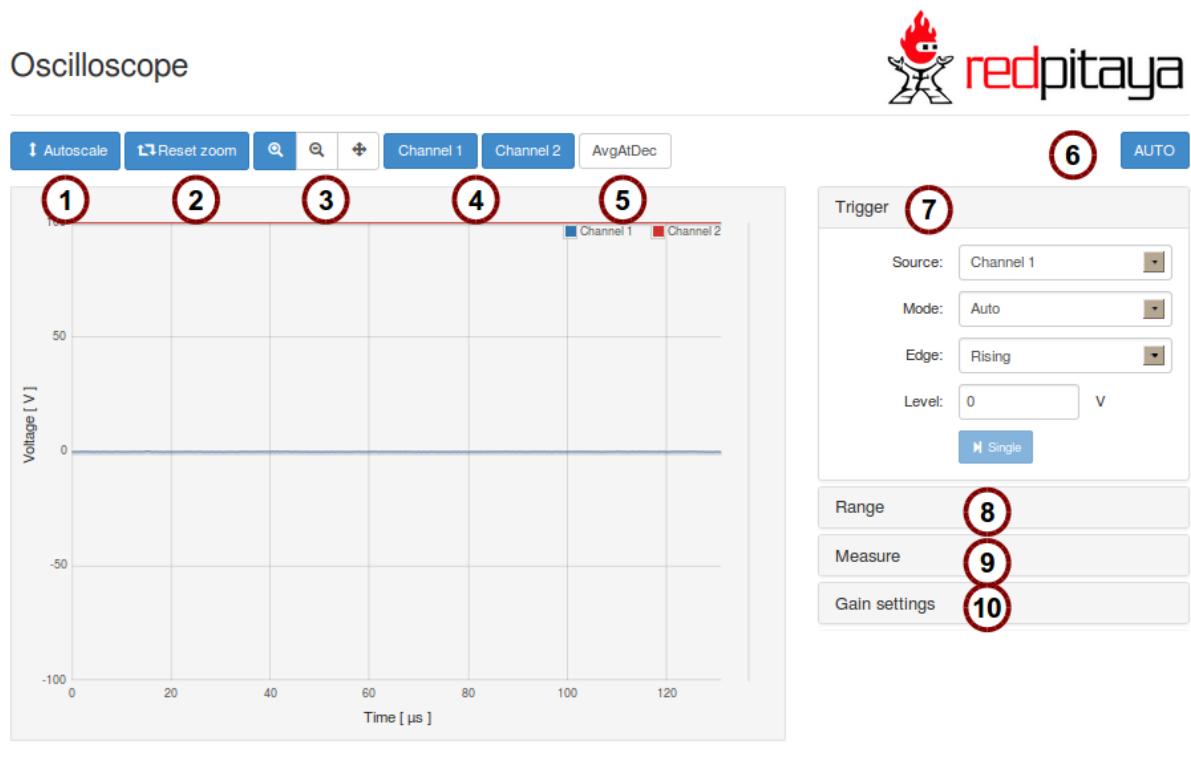
Figure 8: Main screen of WEB interface.

## 4 Web applications

When user connects to a Red Pitaya unit through a WEB browser a list of locally installed applications is visualized (see Figure 8). Applications can be started by clicking the “RUN” button. To install new applications refer to Chapter 5.

### 4.1 Oscilloscope application

This application turns your Red Pitaya into two channel time domain signal visualization system. The main part of the application is the plot area where 2 RF input signals are presented. The user can control how the traces are visualized through the buttons on the top of the plot area (see Figure 9). Other options are available in the drop down menus on the right side, see Table 4 for details. Screenshots were taken from a PC browser. The layout may differ on other devices/browsers.



© 2014 - Red Pitaya

Figure 9: Oscilloscope application.

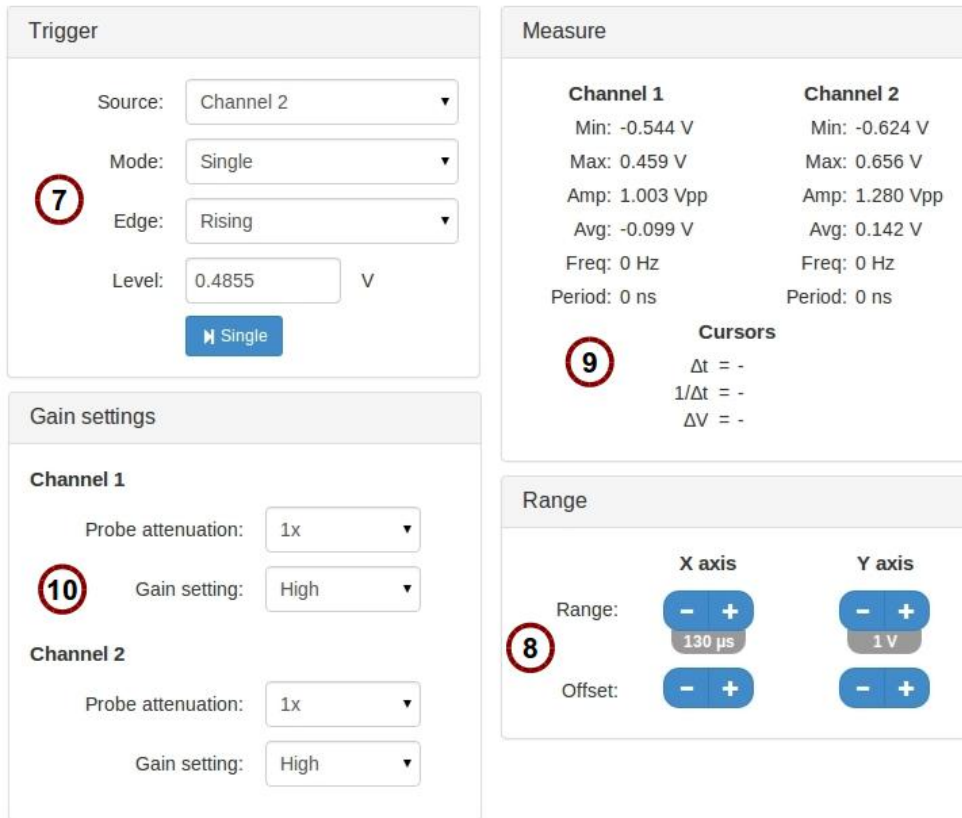


Figure 10: Oscilloscope application drop down menus.

Table 4 contains description of Oscilloscope functionalities referring to the annotations in Figure 9 and Figure 10.

Table 4: Functions of Oscilloscope application.

Annotation number	Description
1	Autoscale: When clicked it sets the voltage range in order for the current input signals to optimally fit into the plot area.
2	Reset zoom: When clicked it resets the time range to the interval 0 to 130 $\mu$ s and sets the voltage range to full scale.
3	Diagram tools: zoom in / zoom out / pan / marker A / marker B (tablet devices combine the first 3 diagram tools).
4	Channel enable buttons: Enable or disable visualization of specific channel.
5	AvgAtDec: Enables sample averaging during long acquisitions. Signal to noise ratio can be improved through averaging, but the information concerning high frequencies is lost. Refer to the specification documentation for details concerning decimation.

Annotation number	Description
6	AUTO button: Click this button to automatically select the optimal visualization range for the currently applied signals.
7	Trigger menu (click on the “Trigger” bar to expand the trigger menu, Figure 10): <ul style="list-style-type: none"> <li>• Source: trigger source selection (channel1, channel2, external)</li> <li>• Mode: trigger mode               <ul style="list-style-type: none"> <li>○ Auto: Continuously acquires sequences of samples (asynchronously to the input signal).</li> <li>○ Normal: Acquires traces when trigger conditions are met (time <math>t=0</math> in the plot area represents the trigger event)</li> <li>○ Single: A single trace is acquired when “Single” button is clicked.</li> </ul> </li> <li>• Edge: Selects the trigger edge (rising, falling).</li> <li>• Level: Selects the trigger level.</li> </ul>
8	Range menu (Figure 10): Range and offset buttons enable quick diagram visualization area setup.
9	Measure menu: It gathers voltage statistics and frequency/time characteristics of both input signals.
10	Gain settings menu (Figure 10): <ul style="list-style-type: none"> <li>• Probe attenuation: Should be set according to the probe being used.</li> <li>• Gain setting: Should be set according to the current jumper setting.</li> </ul>

To exit the Oscilloscope application click the Red Pitaya logo on the top right of the screen.

## 4.2 Signal generator application

The signal generator functionality is available as an extension of the Oscilloscope application in order to be able to use both of them simultaneously.

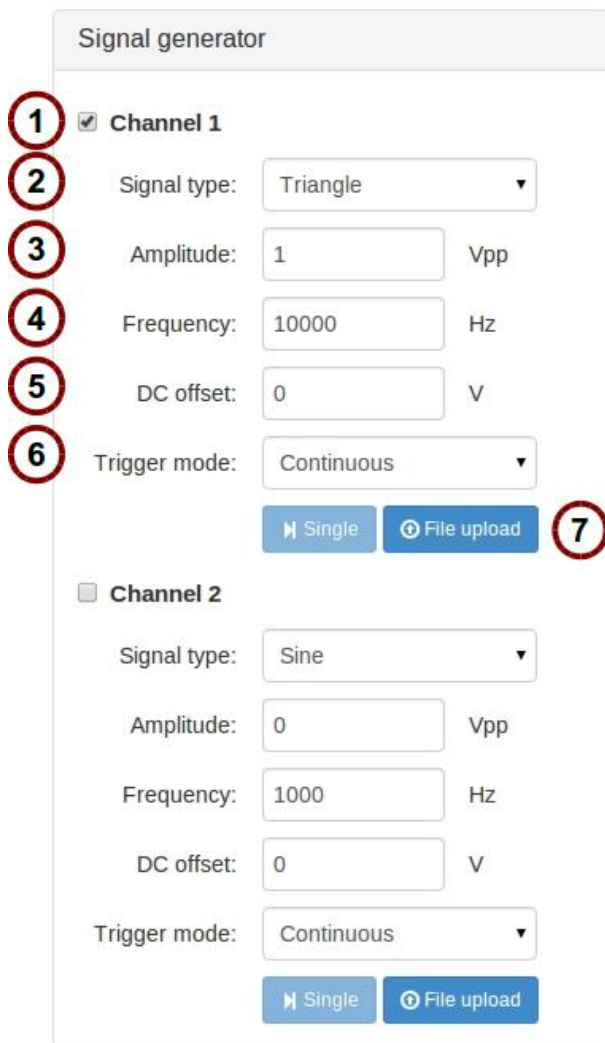


Figure 11: Signal generator drop down menu.

Table 5 contains description of Oscilloscope functionalities referring to annotations in Figure 11.

Table 5: Functions of the signal generator.

Annotation number	Description
1	Signal enable checkbox: It enables/disables the signal generation on a specific channel.
2	Signal type: It defines the output signal type (sinusoidal, rectangular, triangular, and arbitrary - from file).
3	Amplitude: It defines the output signal amplitude.
4	Frequency: It defines the output signal frequency.

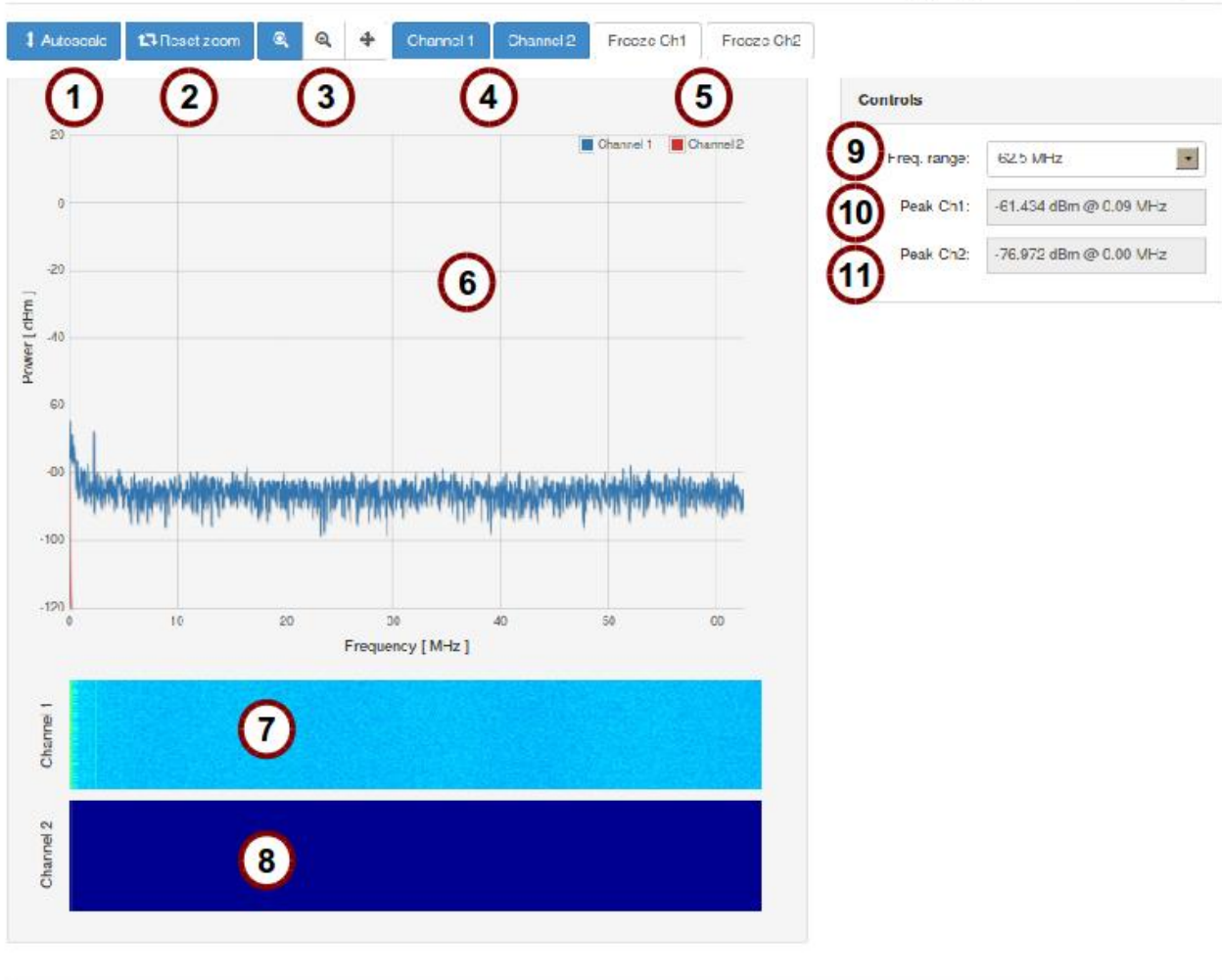
Annotation number	Description
5	DC offset: It defines the signal DC offset.
6	Trigger mode: It defines how the signal is triggered (Continuous, Single, External) “Single” button: When single trigger mode is configured, the click of this button triggers a single sequence of samples.
7	“File upload”: It enables the upload of the arbitrary signal samples in the form of a CSV file (see Red Pitaya specification document).

**Note: The output channels are designed to drive 50  $\Omega$  loads. Terminate outputs when channels are not used. Connect parallel 50  $\Omega$  load (SMA tee junction) in high impedance load applications.**

### 4.3 Spectrum analyzer application

This application turns your Red Pitaya into a two channel frequency domain analysis system. The plot area represents the input signal power in dBms versus frequency. The user can control the diagram area using the buttons on top of plot area and the control menu on the right. See *Table 6* for details. Screenshots were taken from a PC browser. The layout may differ on other devices/browsers.

## Spectrum Analyzer



© 2014 - Red Pitaya

Figure 12: Spectrum analyzer application.

Table 6: Functions of Spectrum analyzer.

Annotation number	Description
1	Autoscale: It sets the Y axis scaling factor in order to optimally fit the visualized spectra into the plot area.
2	Reset zoom: It displays the whole frequency range and sets the Y axis to maximum range.
3	Diagram tools: zoom in / zoom out / pan (tablet devices do not visualize these tools).



Annotation number	Description
4	Channel enable buttons: They enable or disable channel visualization.
5	Channel freeze buttons: It freezes the current spectrum.
6	Main display.
7	Waterfall diagram for channel 1.
8	Waterfall diagram for channel 2.
9	Frequency range selection: The main frequency range covers DC to 62.5 MHz. Additional frequency ranges starting from DC are available in order to observe signal behavior at lower frequencies. For details concerning the frequency range check the specification document.
10	Peak Ch1: It numerically displays the peak marker for channel 1.
11	Peak Ch2: It numerically displays the peak marker for channel 2.

To exit the Spectrum analyzer application click the Red Pitaya logo icon on the top right of the screen.

#### 4.4 PID controller application

The PID controller application is available as an extension of the Oscilloscope application. The PID controller implements four basic PID independent building blocks. Each PID basic building block is identified by two indices  $i$  and  $j$  that range from 1 to 2 ( $PID_{ij}$ ). The following PID blocks are therefore available:  $PID_{11}$ ,  $PID_{12}$ ,  $PID_{21}$  and  $PID_{22}$ . The first index denotes the output port to which the PID block is connected, while the second index denotes the connection input port. Each  $PID_{ij}$  building block has the following integer parameters:

- Set point value: corresponds to the controller reference input voltage expressed in counts (-8192:8191) ( $SP_{ij}$ ).
- Proportional gain: Proportional multiplication factor expressed in counts (-8192:8191) ( $KP_{ij}$ ).
- Integral gain: Integral multiplication factor expressed in counts (-8192:8191) ( $KI_{ij}$ ).
- Derivative gain: Derivative multiplication factor expressed in counts (-8192:8191) ( $KD_{ij}$ ).
- Integrator reset checkbox: When checked, it resets the integrator register.

The PID controller functionality is available through a drop down menu called “PID controller”. This menu presents fields corresponding to the PID parameters (see Figure 13). The user can set the PID coefficients in order to apply feedback to external systems and simultaneously visualize input signals using the Oscilloscope function.

PID 11	Int RST [v]	PID 11	Int RST [v]
SP	0	SP	0
KP	0	KP	0
KI	0	KI	0
KD	0	KD	0
PID 21	Int RST [v]	PID 21	Int RST [v]
SP	0	SP	0
KP	0	KP	0
KI	0	KI	0
KD	0	KD	0

Figure 13: PID controller.

## 5 Installing applications

Red Pitaya applications can be downloaded and installed from Bazaar – the application marketplace. To review and manage (install, upgrade or remove) the available applications, connect to your Red Pitaya through a WEB browser (refer to Chapter 3.7), make sure your Red Pitaya has access to the internet and click on the Bazaar link. A list of applications will appear (see Figure 14). By clicking the “Install” button, the selected application will be installed on your Red Pitaya. The applications that are already installed on your Red Pitaya can be removed or upgraded if newer versions are available, by clicking the »uninstall« or »upgrade« button, respectively.

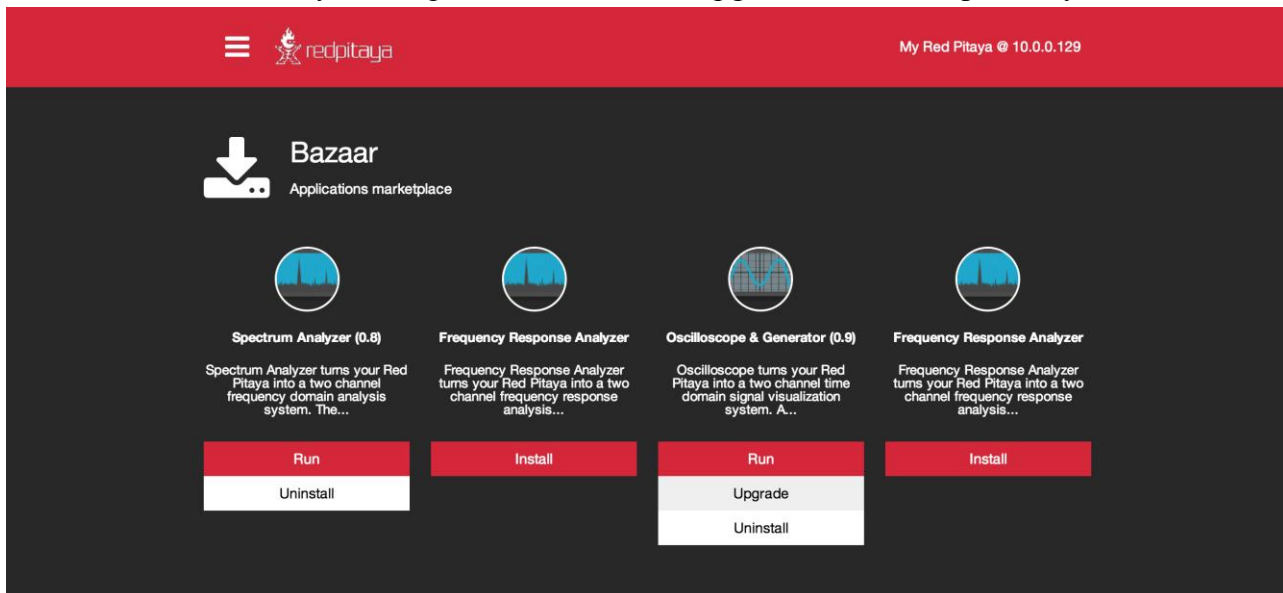


Figure 14: Bazaar – the application marketplace where applications can be installed with a single click.

## 6 Red Pitaya command line utilities

**Note: Command line utilities must not be used in parallel with a WEB application.**

### 6.1.1 Signal generator utility

The Red Pitaya signal generator can be controlled through the command line utility (/opt/bin/generate), but be aware it interferes with the GUI based Generator application. Usage instructions (see also Table 7):

```
redpitaya>generate

Usage: generate channel amplitude frequency <type>

channel      Channel to generate signal on [1, 2].
amplitude    Peak-to-peak signal amplitude in Vpp [0.0 - 2.0].
frequency    Signal frequency in Hz [0 - 1.0e+07].
type         Signal type [sine, sqr, tri].
```

*Table 7: Parameters of Signal generator utility.*

Name	Type	Range	Description
channel	int	1 / 2	Output channel selection
amplitude	float	0 – 2 [V]	Maximal output signal is 2 V peak to peak
freq	float	0 – 10000000 [Hz]	Frequency can be generated in the range from 0 Hz (DC signal) up to 10 MHz
<type>	string	sine / sqr / tri	Optional parameter. Signal shape type (sine – sine wave signal, sqr – square signal, tri – triangular signal). If omitted, sine is used.

The output can be disabled by setting the amplitude parameter to zero.

Example (2 Vpp square wave signal with 1 MHz on channel 1):

```
redpitaya> generate 1 2 1000000 sqr
```

Note that the signal generator output impedance is 50 Ω. If user wants to connect the output of the signal generator (OUT1, OUT2) to the Red Pitaya input (ADC1, ADC2), 50 Ω terminations should be connected at the Red Pitaya ADC inputs through the T-type connector.

### 6.1.2 Signal acquisition utility

The signal from Red Pitaya can be acquired through a command line utility (`/opt/bin/acquire`). It will return raw samples from the ADC buffer to standard output.

Usage instructions (see also Table 8):

```
redpitaya> acquire

Usage: acquire size <dec>

      size      Number of samples to acquire [0 - 16384].
      dec       Decimation [1,8,64,1024,8192,16384] (default=1).
```

Table 8: Parameters of data acquisition tool.

Name	Type	Range	Description
size	int	0 – 16384	The number of samples to read.
<dec>	int	1, 8, 64, 1024, 8192, 16384	Optional parameter. It specifies the decimation factor. If omitted, 1 is used (no decimation).

Acquire utility will return the requested number of samples with decimation factor for both input channels (column 1 = channel 1; column 2 = channel 2).

Example (acquire 1024 samples with decimation 8):

```
redpitaya> acquire 1024 8
```

### 6.1.3 Saving data buffers

It is recommended to use an NFS share to store any temporary data (e.g. the measured signals using the acquire utility). Use a standard `mount` command to mount your NFS share (example):

```
redpitaya> mount -o nolock <ip_address>:<path> /mnt
```

The `/opt` file-system on Red Pitaya, representing the SD card, is mounted read-only. To save the data locally on Red Pitaya redirect the acquisition to a file in the `/tmp` directory. The `/tmp` directory resides in RAM and is therefore volatile (clears on reboot).

```
redpitaya> acquire 1024 8 > /tmp/my_local_file
```

Alternatively, save the data directly to the NFS mount point:

```
redpitaya> acquire 1024 8 >/mnt/my_remote_file
```

### Copying data – Linux users

In case NFS share is not available, you can use secure copy:

```
redpitaya> scp my_local_file <user>@<destination_ip>:/<path_to_directory>/
```

Alternatively Linux users can use graphical SCP/SFTP clients, such as Nautilus for example (explorer window). To access the address line, type [CTRL + L] and type in the following URL: `sftp://root@<ip_address>`

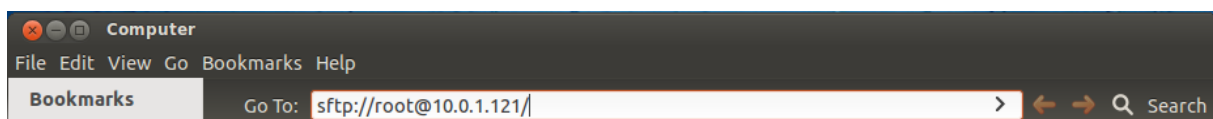


Figure 15: Nautilus URL/address bar.

Insert the Red Pitaya password (Figure 16). The default Red Pitaya password for the root account is »root«. For changing the root password check documentation.

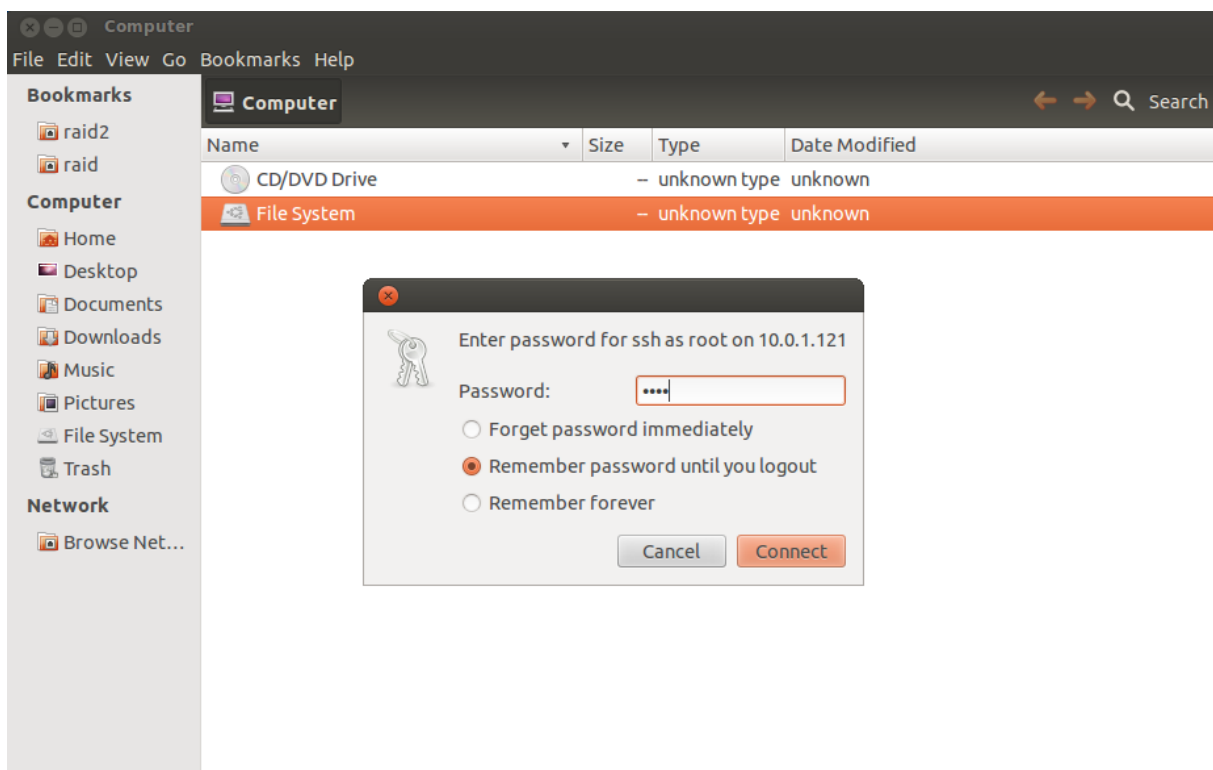


Figure 16: Password window.

After logging in, the main screen will show the directory content of Red Pitaya's root filesystem. Navigate to select your stored data and use the intuitive copy-paste and drag & drop principles to manipulate the files on Red Pitaya (see Figure 17).

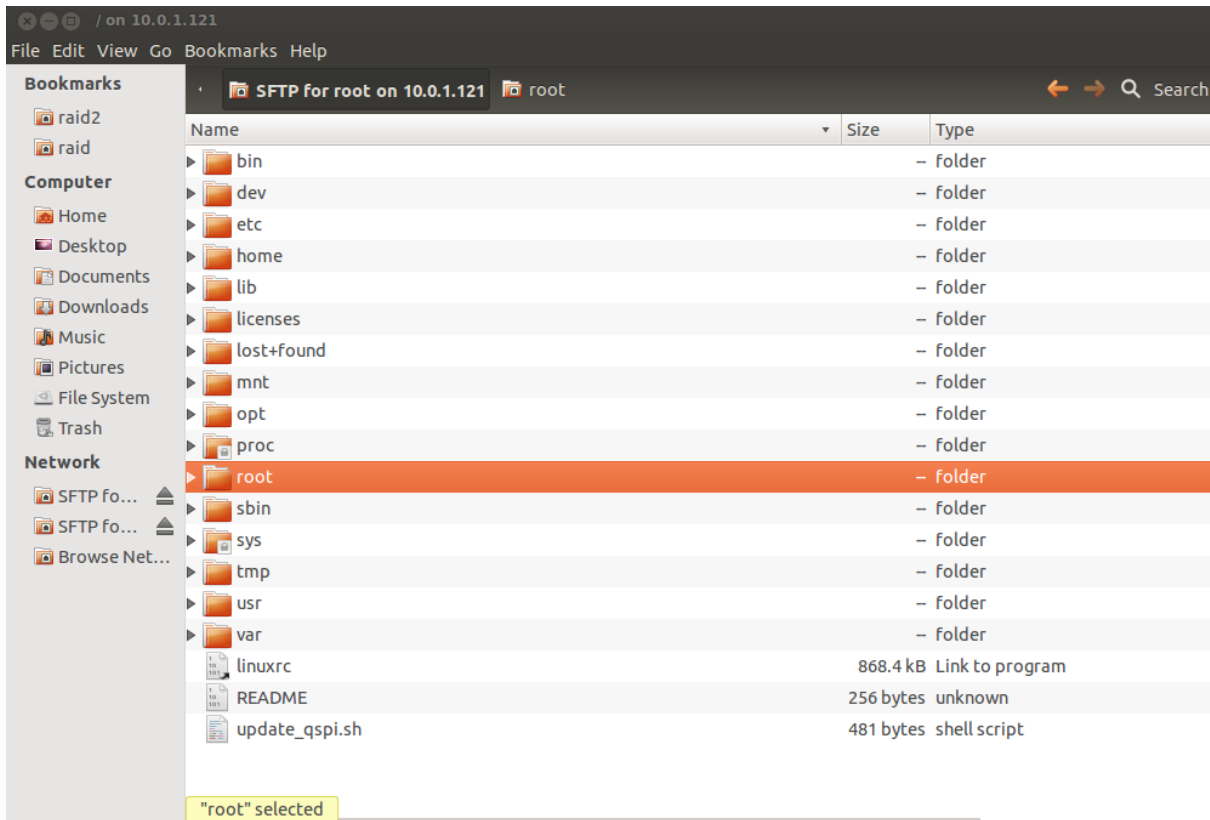


Figure 17: Root filesystem on Red Pitaya.

### Copying data – Windows users

Windows users should use an SCP client such as WinSCP (<http://winscp.net/download/winscp518setup.exe>). Download and install it, and follow its installation instructions. To log in to Red Pitaya, see example screen in Figure 18.

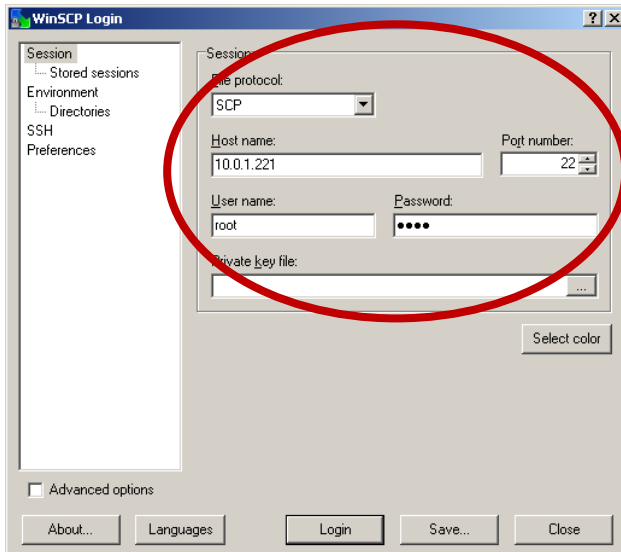


Figure 18: WinSCP login screen.

After logging in, the main screen will show the content of the Red Pitaya root filesystem. Navigate to select your stored data and use the intuitive copy-paste and drag & drop principles to manipulate the files on Red Pitaya (see Figure 19).

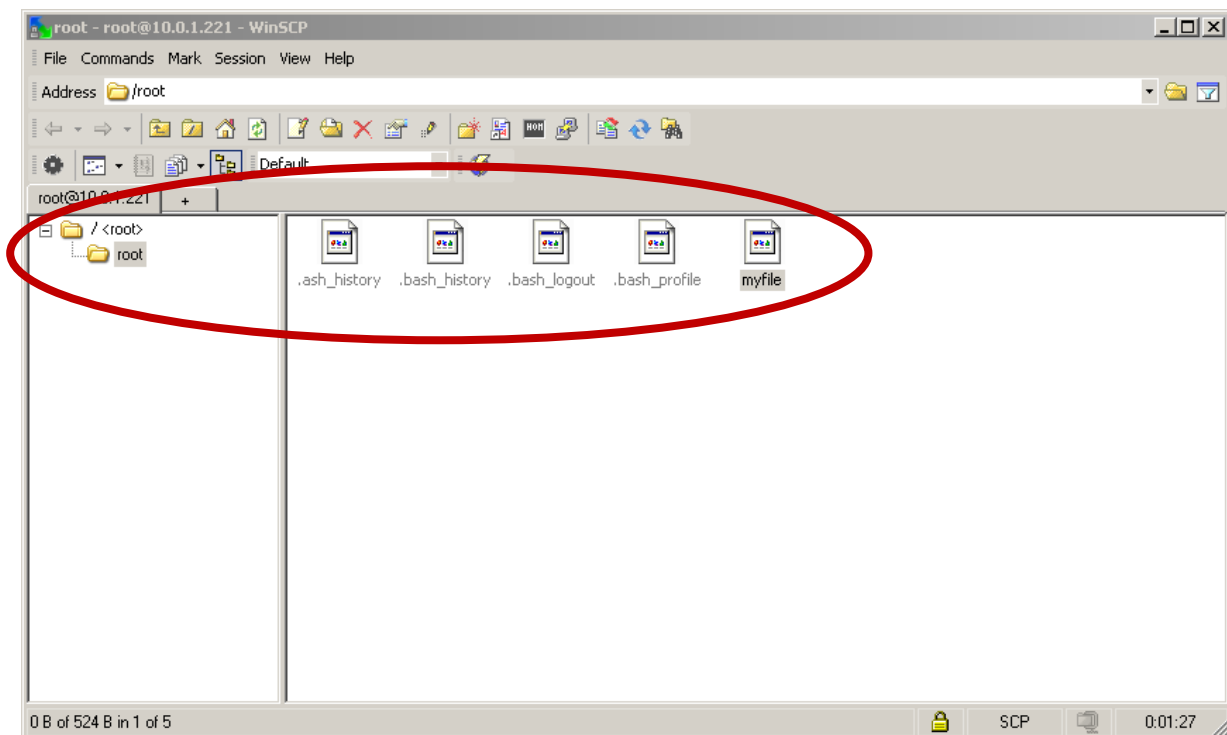


Figure 19: Directory content on Red Pitaya.

Select the destination (local) directory to save the data file to (see Figure 20).

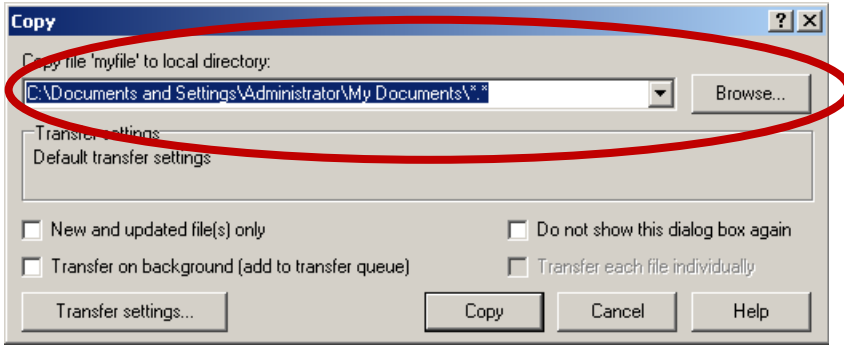


Figure 20: File copy destination.

### 6.1.4 Alternative access to the instrument

Apart from the usual WEB access, Red Pitaya can be accessed from computer using standard utilities such as SCP, SSH. Accessing Red Pitaya from Matlab® can be done through plink interface. Plink (PuTTY Link) is a free and open-source command-line network connection tool that can be downloaded from official PuTTY page:

<http://www.chiark.greenend.org.uk/~sgtatham/putty/download.html>.

#### 6.1.4.1 Signal generator from Matlab

The generator control can be done by executing the following command:

```
unix('plink -l <username> -pw <password> <IP_address> /opt/bin/generate
<channel> <amplitude> <frequency> <type>');
```

The example below presents the setting of the Red Pitaya generator from a Linux PC.

```
unix('plink -l root -pw root 10.0.1.221 "/opt/bin/generate 1 2 500000 sine"');
```

The example below presents the setting of the Red Pitaya generator from a Windows PC.

```
dos('plink -l root -pw root 10.0.1.221 "/opt/bin/generate 1 2 500000 sine"');
```

#### 6.1.4.2 Signal acquisition from Matlab

The signal acquisition can be done by executing the following command:

```
file=['plink -l <username> -pw <password> <IP_address> /opt/bin/acquire <size>
<dec>'];
```

The example below presents the acquisition of the signals from Red Pitaya to a Linux PC.



```
command=['plink -l root -pw root 10.0.1.221 "/opt/bin/acquire 16384 1"'];  
[c,data]=unix(command);  
data=str2num(data);
```

Acquisition of the signals from Red Pitaya to a Windows PC:

```
command=['plink -l root -pw root 10.0.1.221 "/opt/bin/acquire 16384 1"'];  
[c,data]=dos(command);  
data=str2num(data);
```

Acquisition of the signals from Red Pitaya to an NFS share:

```
command=['plink -l root -pw root 10.0.1.221 "/opt/bin/acquire 16384 1 >  
/mnt/data.txt"'];  
unix(command);
```

### 6.1.5 Accessing system registers

The system registers can be accessed through a monitor utility (/opt/bin/monitor). Usage instructions:

```
redpitaya> monitor  
  
Usage:  
  read addr: address  
  write addr: address value  
  read analog mixed signals: -ams  
  set slow DAC: -sdac AO0 AO1 AO2 AO3 [V]
```

Example (system register reading):

```
redpitaya> monitor -ams
#ID   Desc           Raw   Val
0     Temp (0C-85C)  a4f   51.634
1     AI0 (0-3.5V)   1     0.002
2     AI1 (0-3.5V)   13    0.033
3     AI2 (0-3.5V)   1     0.002
4     AI3 (0-3.5V)   2     0.003
5     AI4 (5V0)      669   4.898
6     VCCPINT (1V0)  55c   1.005
7     VCCPAUX (1V8)  9a9   1.812
8     VCCBRAM (1V0)  55d   1.006
9     VCCINT (1V0)   55b   1.004
10    VCCAUX (1V8)   9ab   1.813
11    VCCDDR (1V5)   809   1.507
12    AO0 (0-1.8V)   2b0000 0.496
13    AO1 (0-1.8V)   150000 0.242
14    AO2 (0-1.8V)   2b0000 0.496
15    AO3 (0-1.8V)   220000 0.392
```

The `-ams` switch provides access to analog mixed signals including Zynq SoC temperature, auxiliary analog input reading, power supply voltages and configured auxiliary analog output settings. The auxiliary analog outputs can be set through the monitor utility:

```
redpitaya> monitor -sdac 0.9 0.8 0.7 0.6
```

### 6.1.6 Accessing FPGA registers

Red Pitaya signal processing is based on two computational engines: the FPGA and the dual core processor in order to effectively split the tasks. Most of the high data rate signal processing is implemented within the FPGA building blocks. These blocks can be configured parametrically through registers. The FPGA registers are documented in the “RedPitaya\_HDL\_memory\_map-xxx” document. The registers can be accessed using the described monitor utility. For example, the following sequence of monitor commands checks, modifies and verifies the acquisition decimation parameter (at address 0x40100014):

```
redpitaya> monitor 0x40100014
0x00000001
redpitaya>
redpitaya> monitor 0x40100014 0x8
redpitaya> monitor 0x40100014
0x00000008
redpitaya>
```

**Note: The CPU algorithms communicate with FPGA through these registers. Therefore, the user should be aware of a possible interference with Red Pitaya applications, reading or acting upon these same FPGA registers. For simple tasks, however, the monitor utility can be used by high level scripts (Bash, Python, Matlab...) to communicate directly with FPGA if necessary.**



### 6.1.7 Application development

For detailed instructions about new application development, please refer to Red Pitaya Development Guide.

## 7 Support and contact information

To learn more about technical specifications, signal connections, applications and command line utilities, you may visit [www.redpitaya.com](http://www.redpitaya.com) webpage or contact our distributor support: PLEASE PROVIDE EMAIL ADDRESS