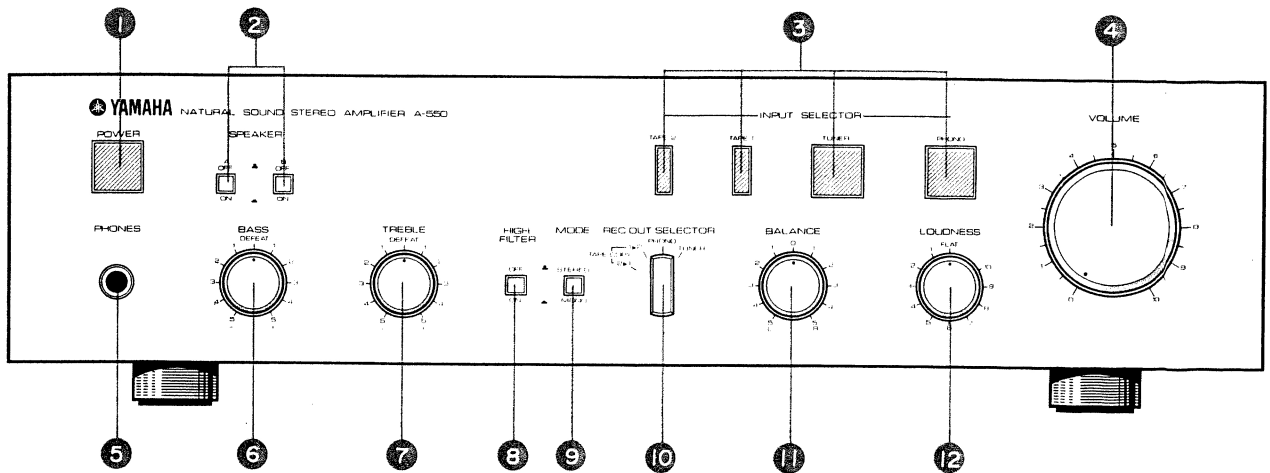


A-550

SERVICE MANUAL

FRONT PANEL



- ① POWER SWITCH
- ② SPEAKER SELECTOR SWITCH
- ③ INPUT SELECTOR SWITCH
- ④ VOLUME CONTROL
- ⑤ PHONES JACK
- ⑥ BASS CONTROL
- ⑦ TREBLE CONTROL
- ⑧ HIGH FILTER SWITCH
- ⑨ MODE SWITCH
- ⑩ REC OUT SELECTOR SWITCH
- ⑪ BALANCE CONTROL
- ⑫ LOUDNESS CONTROL

CONTENTS

SPECIFICATIONS	2
REAR PANELS	3
INTERNAL VIEW	4
DISASSEMBLY PROCEDURES	5
ADJUSTMENTS	7
BLOCK DIAGRAM	8
PRINTED CIRCUIT BOARD/WIRING	9
SCHEMATIC DIAGRAM	10
PARTS LIST	

004392

SPECIFICATIONS

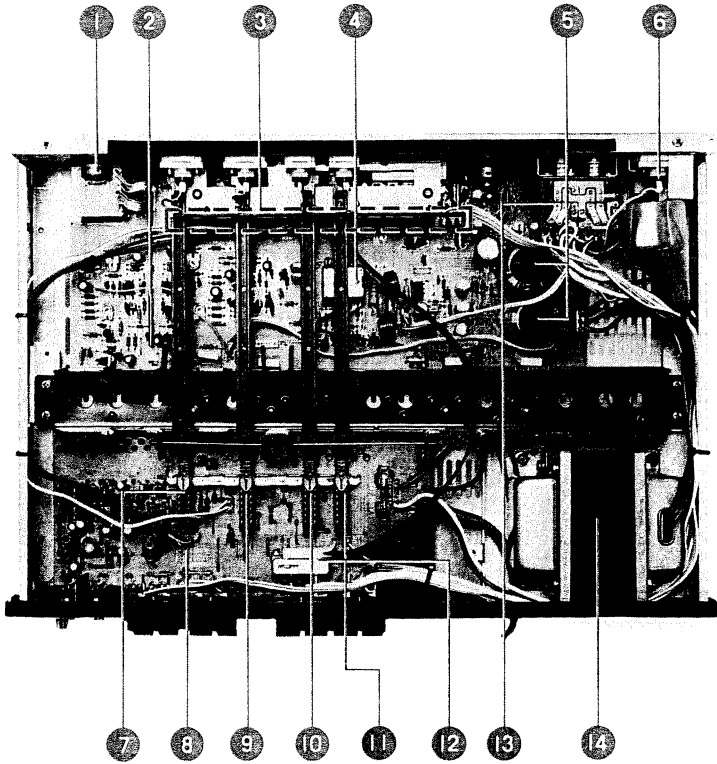
Output Power		
Continuous r.m.s. power (both channels driven)		
20Hz to 20kHz	8Ω	40 + 40W at 0.02% T.H.D.
	4Ω	45 + 45W
		at 0.1% T.H.D.
at 1kHz	8Ω	45 + 45W at 0.02% T.H.D.
	4Ω	50 + 50W at 0.1% T.H.D.
PHONES OUT	8Ω	50mW (Impedance 220Ω)
Input Sensitivity/Impedance		
PHONO		2.5mV/47kΩ 220pF
TUNER, TAPE 1, 2		150mV/47kΩ
Maximum Input Level		
PHONO (0.005% T.H.D.)		More than 200mV at 1kHz
Output Level/Impedance		
REC OUT 1, 2		150mV/600Ω
Maximum Output Level		
PHONO to REC OUT (0.005% T.H.D.)		More than 12V at 1kHz
Frequency Response		
Phono RIAA deviation (PHONO → REC OUT)		
		40Hz to 20kHz ±0.2dB
TUNER, TAPE 1, 2 → SP OUT		
		4Hz to 70kHz +0dB, -2.0dB
Power Bandwidth		
20W/8Ω 0.05% T.H.D.		10Hz ~ 70kHz (-3dB)
Tone Control Characteristics		
BASS turnover frequencies		500Hz
BASS boost/cut		±10dB at 20Hz
TREBLE turnover frequencies		3kHz
TREBLE boost/cut		±10dB at 20kHz
Filter & Loudness Control Characteristics		
HIGH FILTER		10kHz 12dB/oct.
Internal SUBSONIC FILTER		12Hz 12dB/oct.
LOUDNESS		Level-related equalization
Signal-Noise Ratio		
IHF-A Network, Input shorted		
PHONO		98dB (10mV)
TUNER, TAPE 1, 2		104dB
Residual Noise		
IHF-A Network Vol. min		Less than 120μV
Total Harmonic Distortion		
PHONO to REC OUT		0.005% 3V output (20Hz ~ 20kHz)
		0.003% 3V output (1kHz)
TUNER, TAPE 1, 2 to SP OUT		
		0.01% 20W/8Ω (20Hz ~ 20kHz)
PHONO to SP OUT		0.01% 20W/8Ω Vol. -30dB (20Hz ~ 20kHz)

IM Distortion Ratio (60Hz : 7kHz = 4 : 1)	
TUNER, TAPE 1, 2 → SP OUT	
	0.005% 20W/8Ω
N.D.C.R.	
PHONO → SP OUT	12mW ~ 40W (0.1% T.H.D. Vol. -20dB 1kHz, IHF-A Network Rg 10Ω)
Damping Factor at 1kHz	Better than 40 into 8Ω
Channel Separation	
TUNER, TAPE 1, 2 → SP OUT	
	65dB (1kHz, 5.1kΩ shorted)
General	
Semiconductors	Transistors 45 ICs 2 Diodes 20 Zener Diode 1
AC OUTLETS (U.S.A. Canadian and General Models)	
	SWITCHED 2 Total 200W max UNSWITCHED 1 100W max
Power supplies	U.S.A. & Canadian Models 120V AC60Hz General Model 110/120/220/240V AC50/60Hz N. European Model 220V AC50Hz British & Australian Models 240V AC50Hz
Power Consumption	U.S.A. & Canadian Models 240W/310VA General Model 240W N. European Model 260W British & Australian Models 290W
Dimensions (W x H x D)	435 x 112 x 338mm (17-1/8" x 4-1/2" x 13-1/4")
Weight	7.8kg (17 lb 3 oz)

Specifications subject to change without notice.

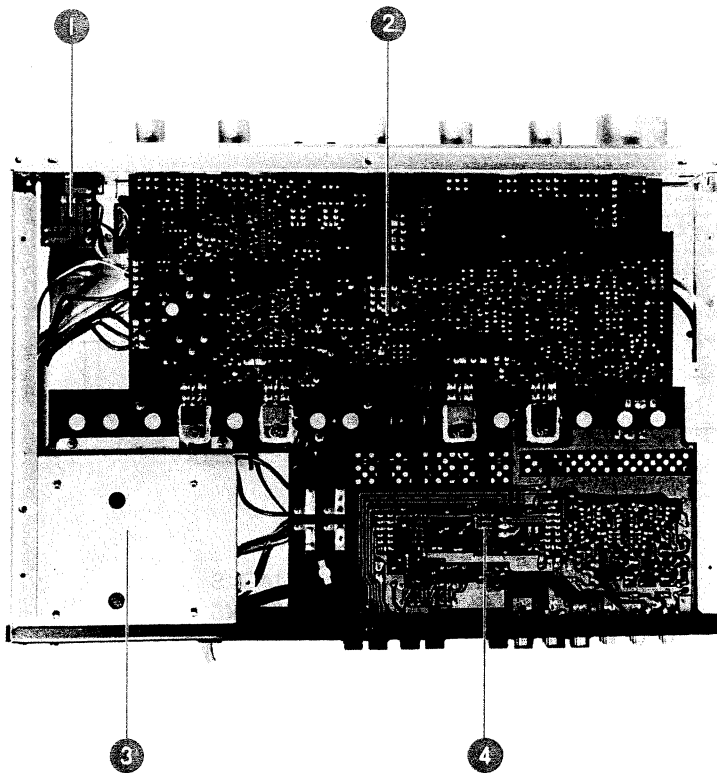
INTERNAL VIEW

1. TOP VIEW



- ① VOLUME (VR203 : 200K x 2)
- ② MAIN CIRCUIT BOARD (1)
- ③ FUNCTION CIRCUIT BOARD (2) : NA07355
- ④ RELAY : (RY301 : MS12D 4-OZ or 04AL-01)
- ⑤ ELECTROLYTIC CAPACITOR (C303, C304 : 6800 μ F 50WV, FM73968)
- ⑥ POWER SWITCH (KA80050 : US & CANADIAN models) (KA80051 : Other areas)
- ⑦ PHONO SWITCH (KA80127)
- ⑧ FUNCTION CIRCUIT BOARD (1)
- ⑨ INPUT SELECTOR TUNER SWITCH
- ⑩ INPUT SELECTOR TAPE 1 SWITCH
- ⑪ INPUT SELECTOR TAPE 2 SWITCH
- ⑫ REC OUT SELECTOR SWITCH
- ⑬ MAIN CIRCUIT BOARD (2)
- ⑭ POWER TRANSFORMER

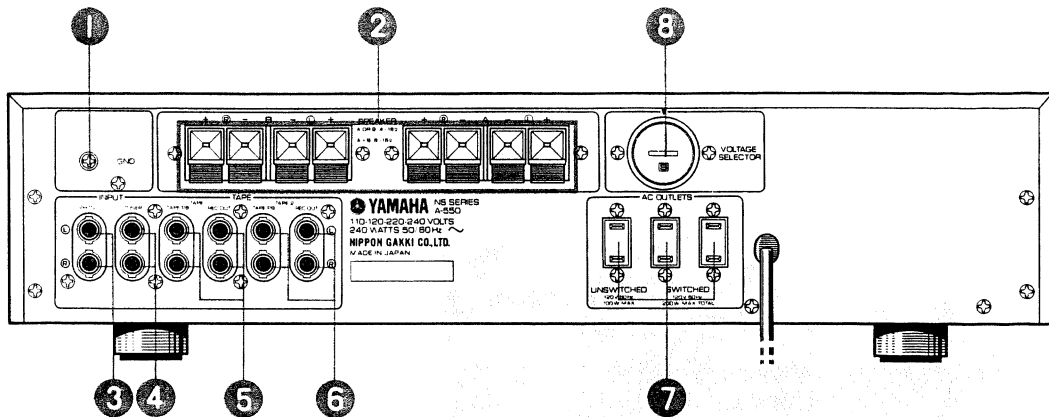
2. BOTTOM VIEW



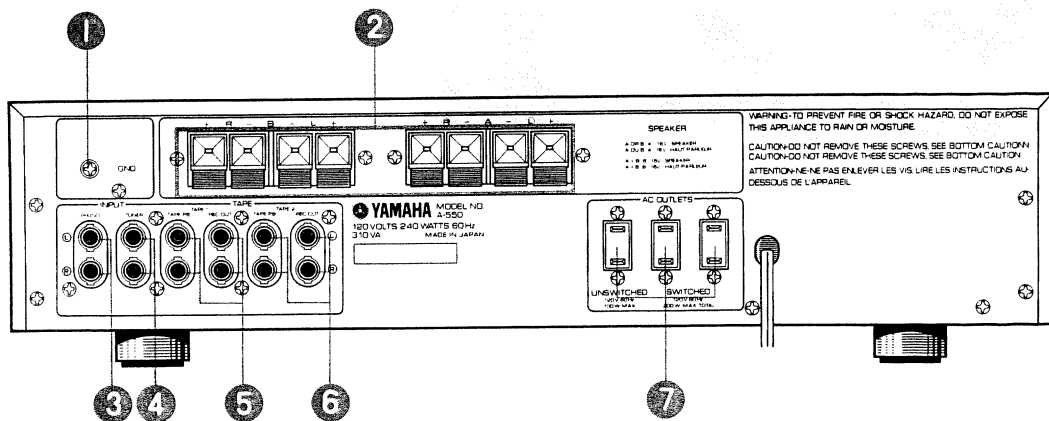
- ① MAIN CIRCUIT BOARD (3)
- ② MAIN CIRCUIT BOARD (1)
- ③ POWER TRANSFORMER
- ④ FUNCTION CIRCUIT BOARD (1)

REAR PANELS

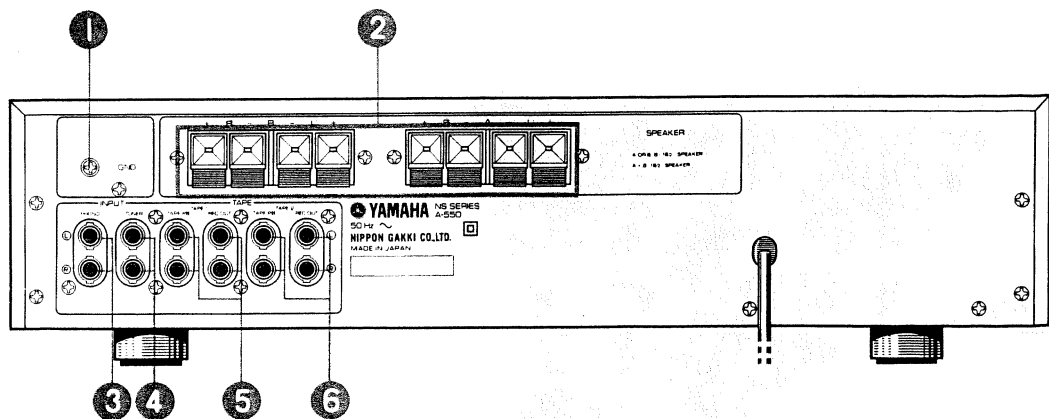
▼ GENERAL MODEL



▼ US & CANADIAN MODELS



▼ BRITISH, N. EUROPEAN & AUSTRALIAN MODELS



- ① GND TERMINAL
- ② SPEAKER TERMINALS
- ③ PHONO INPUT JACKS
- ④ TUNER INPUT JACKS
- ⑤ TAPE 1 PB/REC OUT JACKS
- ⑥ TAPE 2 PB/REC OUT JACKS
- ⑦ AC OUTLETS
- ⑧ VOLTAGE SELECTOR

DISASSEMBLY PROCEDURES

1. Top cover removal

Remove screws ① and ② in Photo 1 and then remove the top cover.

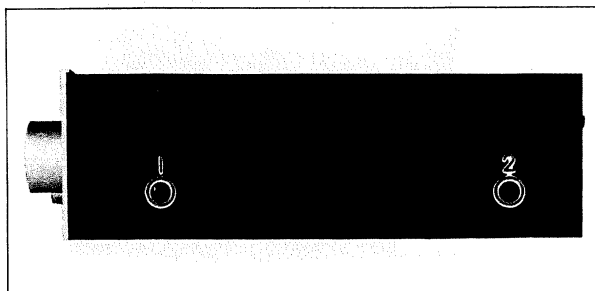


Photo 1

2. Bottom cover removal

Remove screws ① to ⑦ in Photo 2 and then remove the bottom cover.

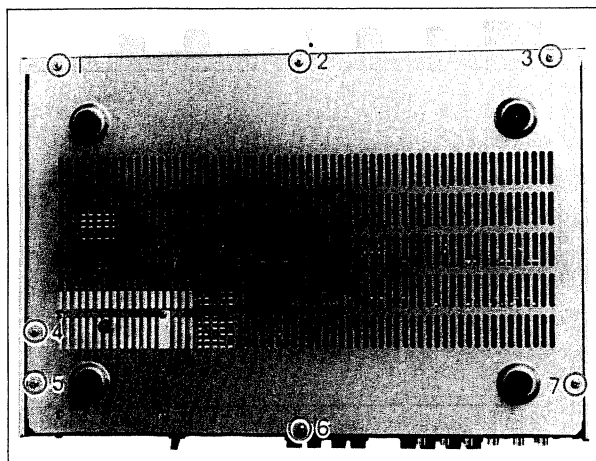


Photo 2

3. Front panel removal

- Remove all the knobs on the front panel. Pull the VOLUME, BALANCE, LOUDNESS and TONE CONTROL knobs toward you and remove. Loosen the setscrew of REC OUT selector knobs with a 2mm diameter hexagonal wrench and then remove the knob.
- Remove the top and bottom covers.
- Pull out the illuminating lamps of the push button switch ③ to ⑦ in Photo 3 as shown in Fig. 1.

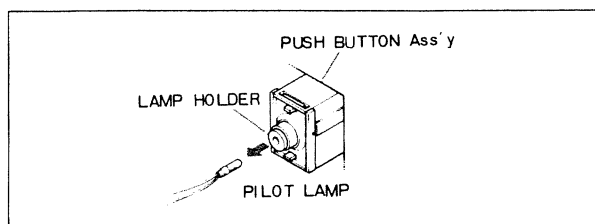


Fig. 1

- Remove screws ① and ② in Photo 3 and then pull out the front panel gently toward you.

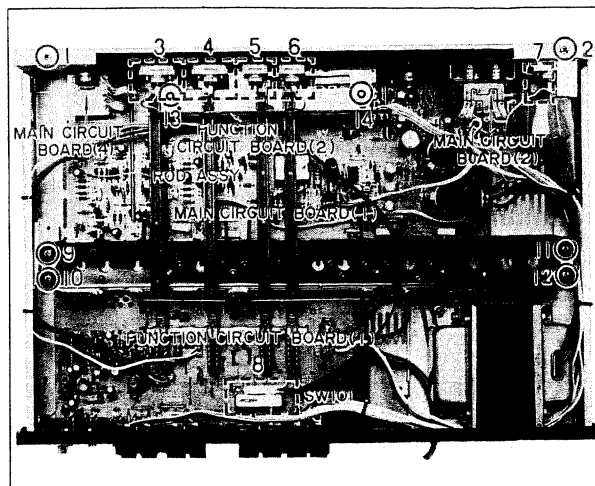


Photo 3

4. Function printed circuit board removal

- Remove the top cover. (Refer to step 1.)
- Wrench the upper part of REC OUT SELECTOR switch (SW101 ⑧) in Photo 3 open with a ⊖ screwdriver.

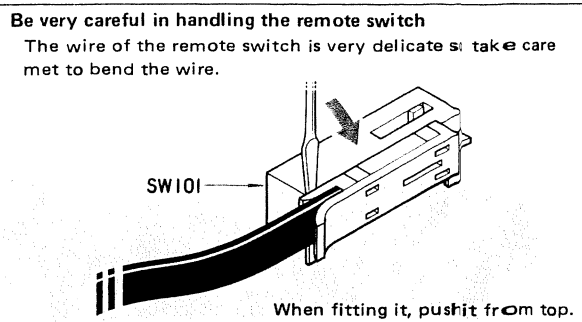


Fig. 2

- Disconnect the lead wires which are connected to the function printed circuit board.
- Remove the rod stay which is inset in the heat sink as shown in Fig. 3.

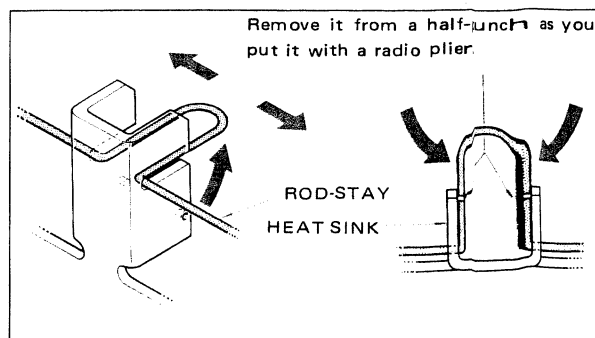


Fig. 3

- e) Pull up the four rods as you hold the switches as shown in Fig. 4.
- f) Remove screws ① to ⑦ in Photo 4.
- g) Remove screws ① and ② in Photo 5 and then remove function circuit board.

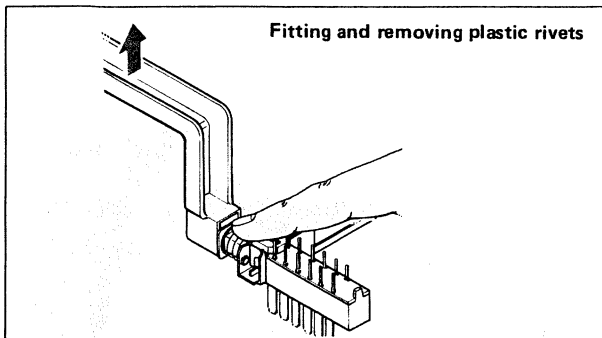


Fig. 4

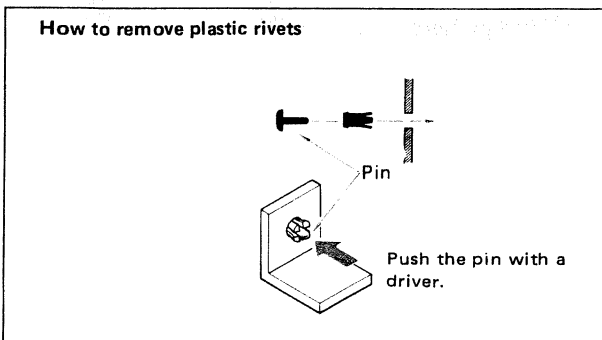


Fig. 5

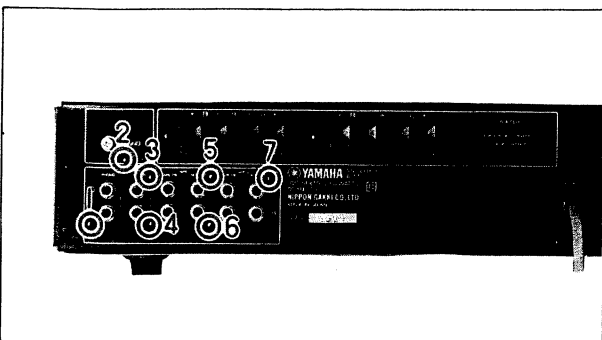


Photo 4

5. Main printed circuit board (1) removal

- a) Remove the front panel. (Refer to step 3.)
- b) Disconnect the lead wires which are connected to the main printed circuit board (1).
- c) Remove nuts ① to ⑤ in Photo 6.
- d) Remove the upper part of REC OUT SELECTOR switch in Photo 3 as you refer to Fig. 4.
- e) Remove screws ⑨ to ⑫ in Photo 3.
- f) Remove screws ④ to ⑥ in Photo 5.
- g) Remove plastic rivets ⑬ and ⑭ in Photo 3 and set the rod Ass'y free.
- h) When removing Rod Ass'y, refer to Fig. 4.

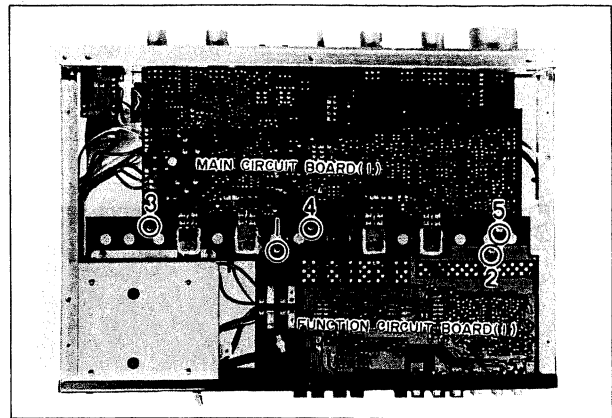


Photo 5

6. Main printed circuit board (2) (Speaker switch) removal

- a) Remove the front panel.
- b) Remove screws ⑦ and ⑧ in Photo 6 and then remove main printed circuit board (2).

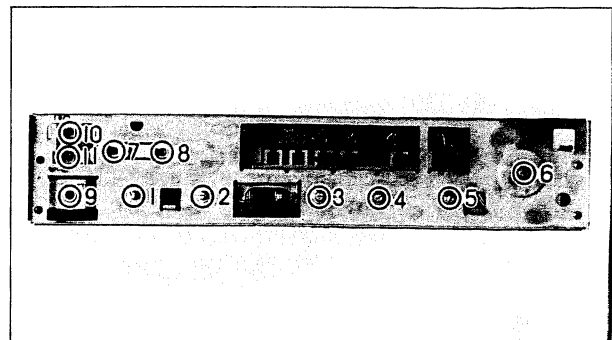


Photo 6

7. Main printed circuit board (3) (PHONES jack) removal

- a) Remove the front panel. (Refer to step 1.)
- b) Pull out the stopper ⑨ in Photo 6 with a plier upwards and then main printed circuit board (3) is removed with the headphone jack.

8. Main printed circuit board 4 (VOLUME) removal

- a) Remove the front panel. (Refer to step 1.)
- b) Remove the nut ⑥ in Photo 6 and then remove main printed circuit board (4).

9. Power switch removal

- a) Remove the front panel. (Refer to step 1.)
- b) Remove screws ⑩ and ⑪ in Photo 6 and remove the power switch.

ADJUSTMENTS

Before adjusting

- Proceed with the adjustments about 3 or 4 minutes after the power has been switched on to enable the operation of the amplifier to stabilize.
- Connect 8Ω (over 40W) dummy loads to the speaker terminals.
- Set the volume control to its lowest position.

1. Idling current adjustment

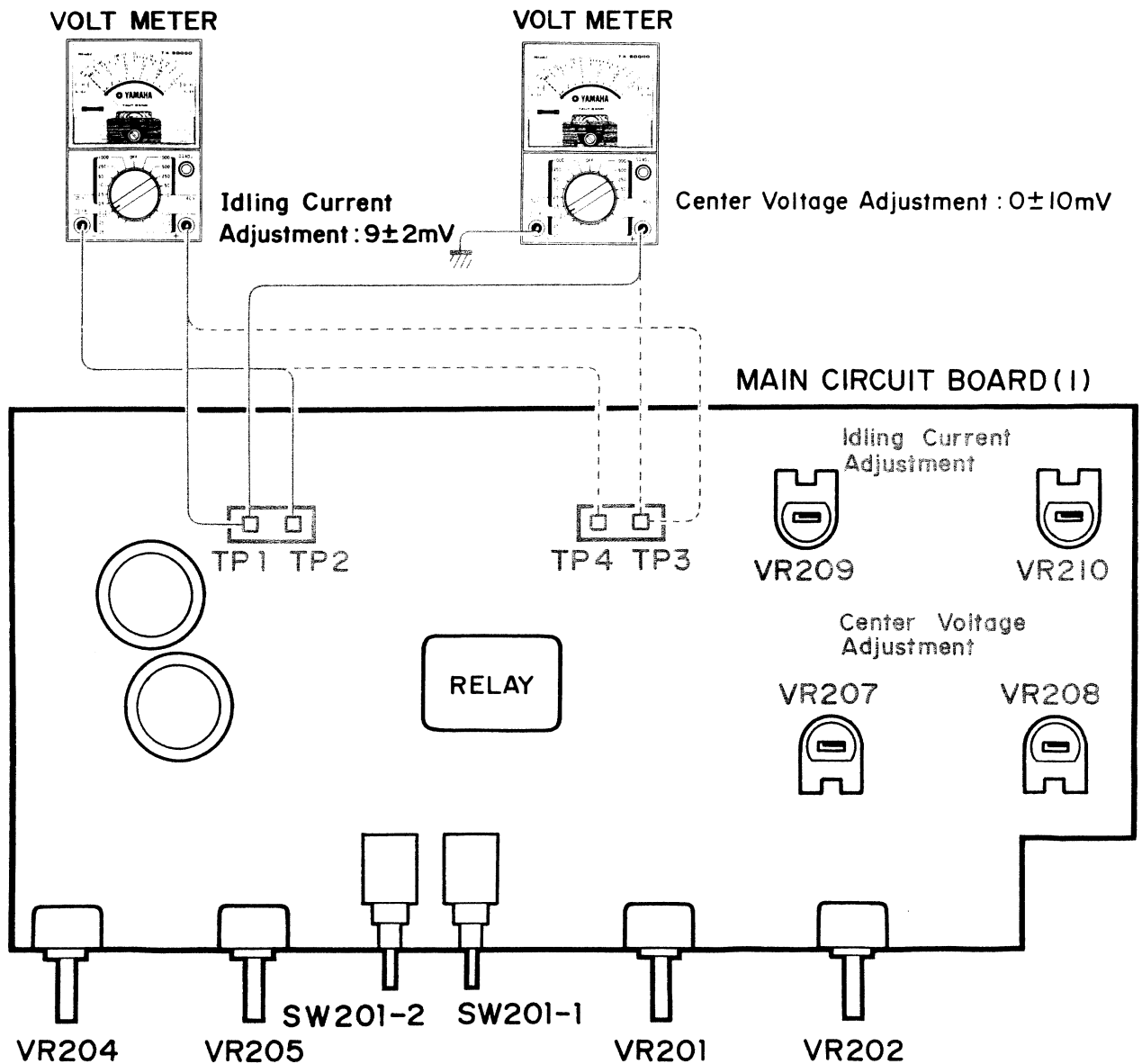
LEFT CHANNEL : Rotate VR209 on the main printed circuit board/and set so that the voltage across TP1 and TP2 comes within a range of $9 \pm 2\text{mV}$.

RIGHT CHANNEL : Rotate VR210 on the main printed circuit board/and set so that voltage across TP3 and TP4 comes within a range of $9 \pm 2\text{mV}$.

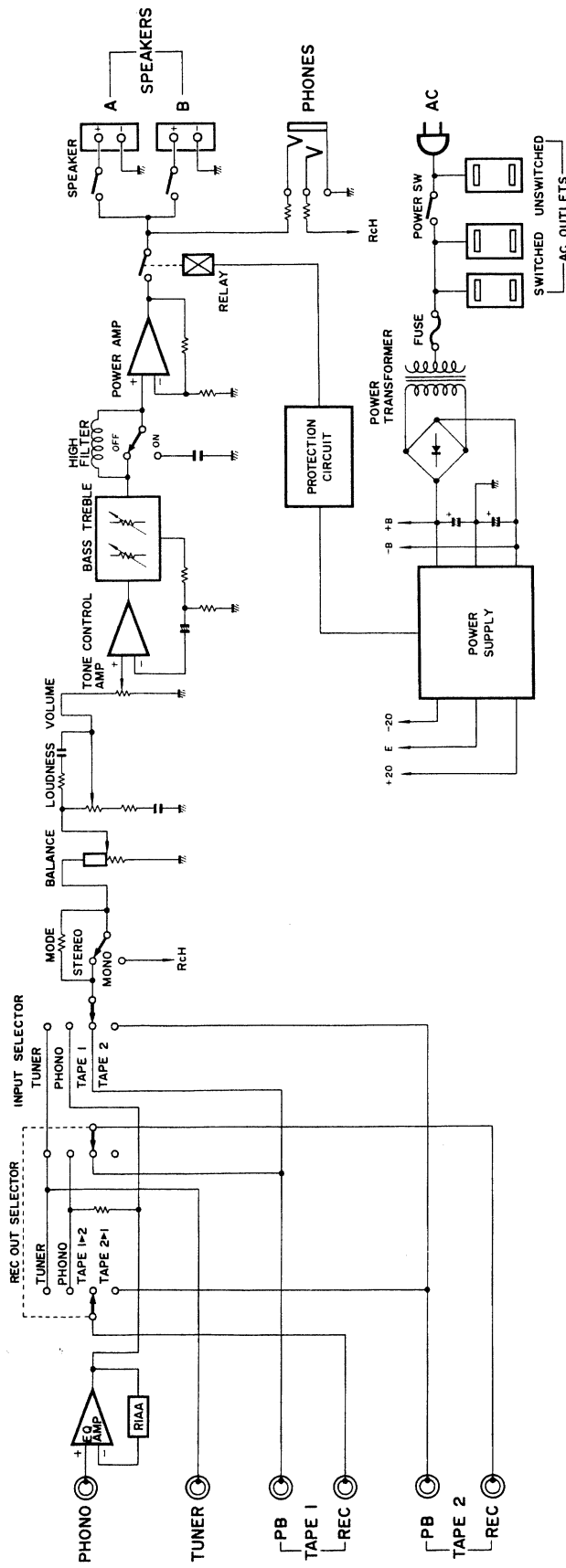
2. Center Voltage adjustment

LEFT CHANNEL : Rotate VR207 on the main printed circuit board/and set so that voltage across TP1 and E comes within a range of $0 \pm 10\text{mV}$.

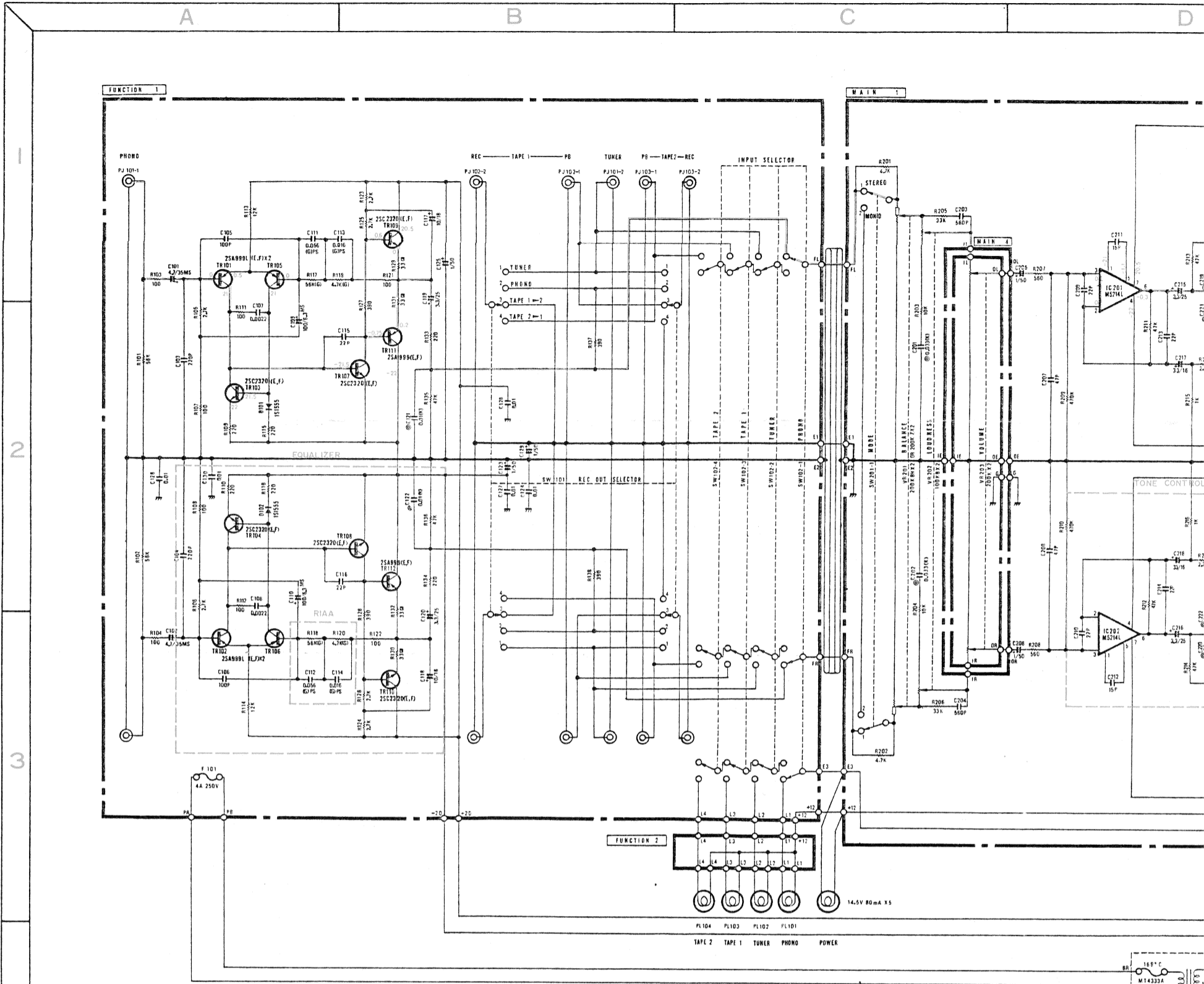
RIGHT CHANNEL : Rotate VR208 on the main printed circuit board and set so that voltage across TP3 and E comes within a range of $0 \pm 10\text{mV}$.



BLOCK DIAGRAM



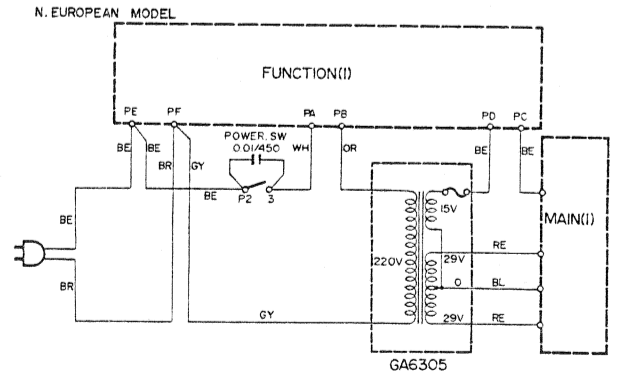
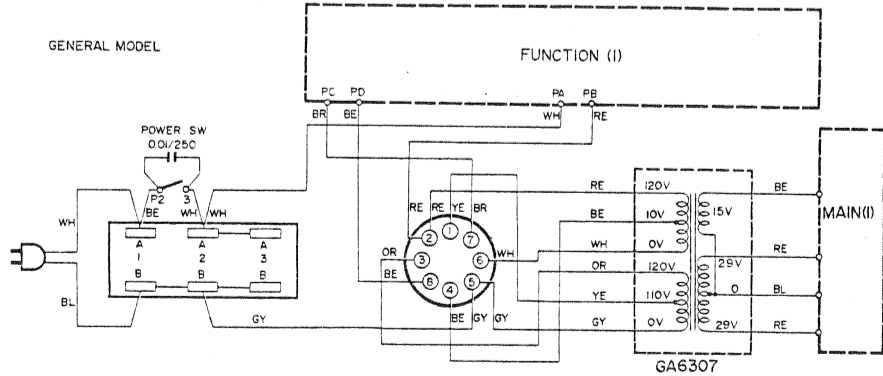
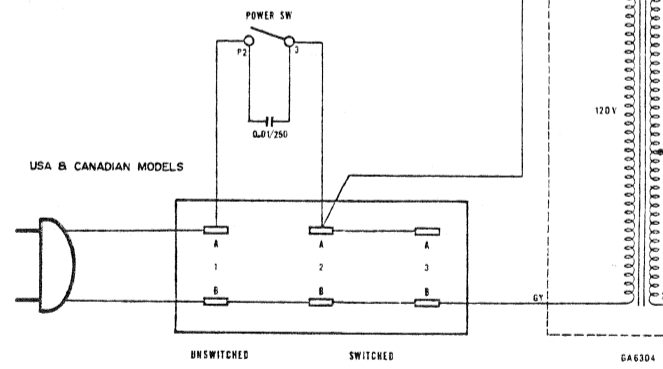
SCHEMATIC DIAGRAM

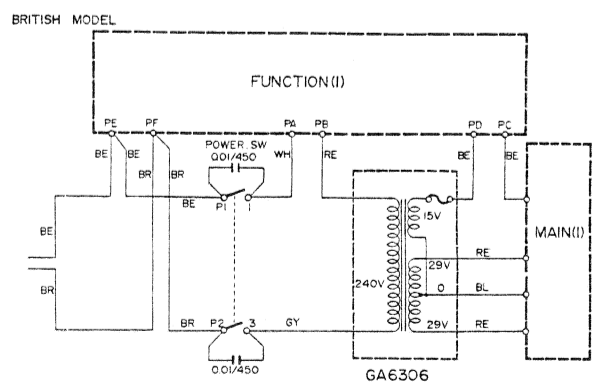
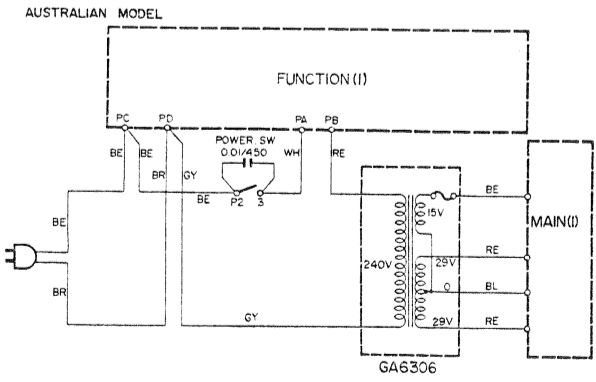
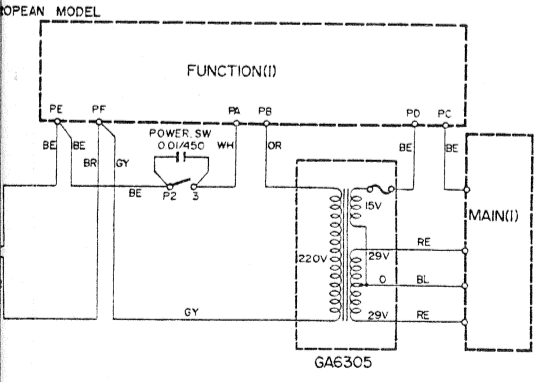
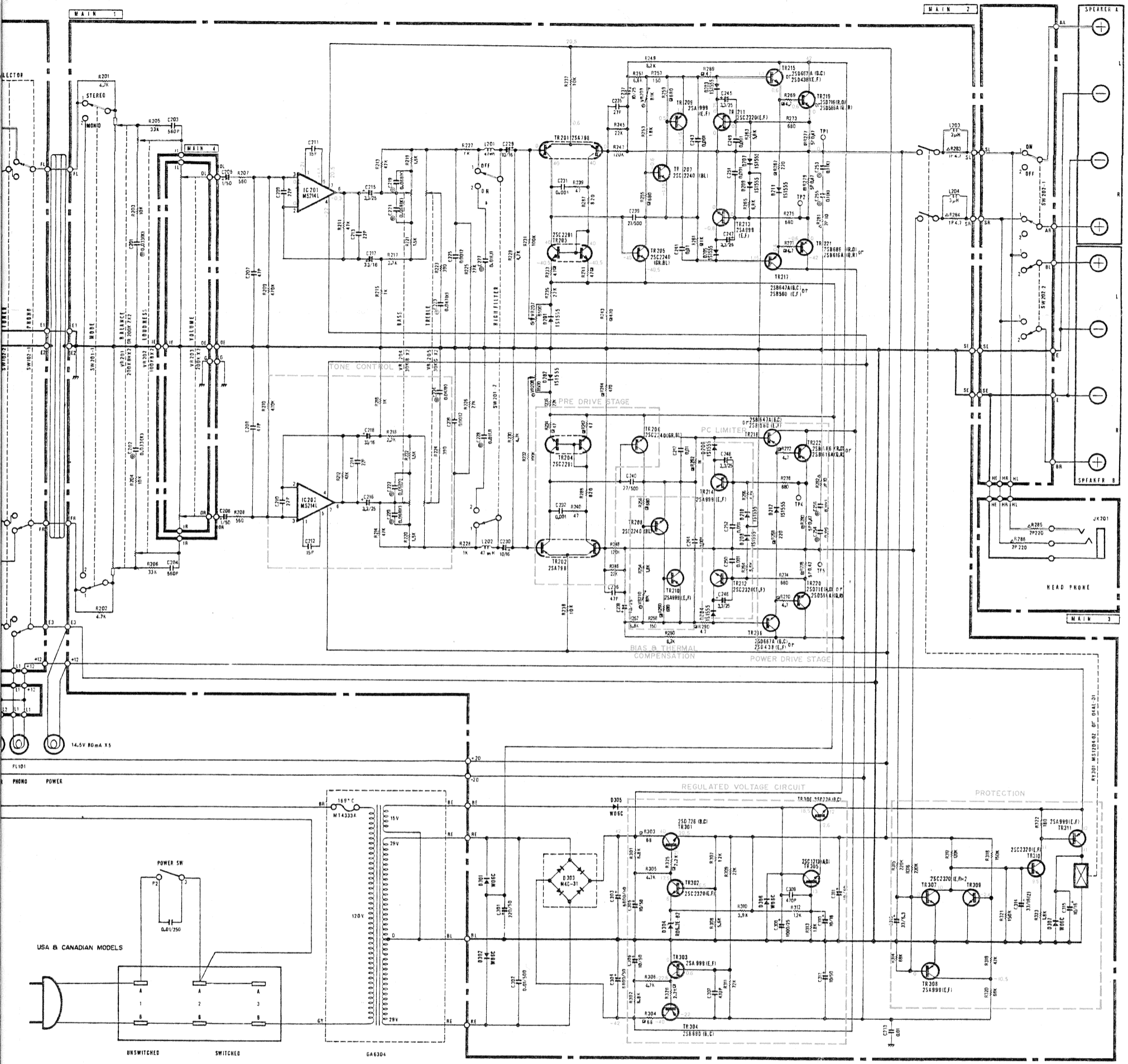


* All voltages measured with a 50K Ω /V DC electronic voltmeter.

RESISTOR	
REMARKS	PARTS
NO MARK	CARBON RESISTOR
M	METAL PLATE RESISTOR
W	FIRE-FREE CARBON RESISTOR
⊙	SEMI-VARIABLE RESISTOR
Δ	METALIZED OXIDATION RESISTOR

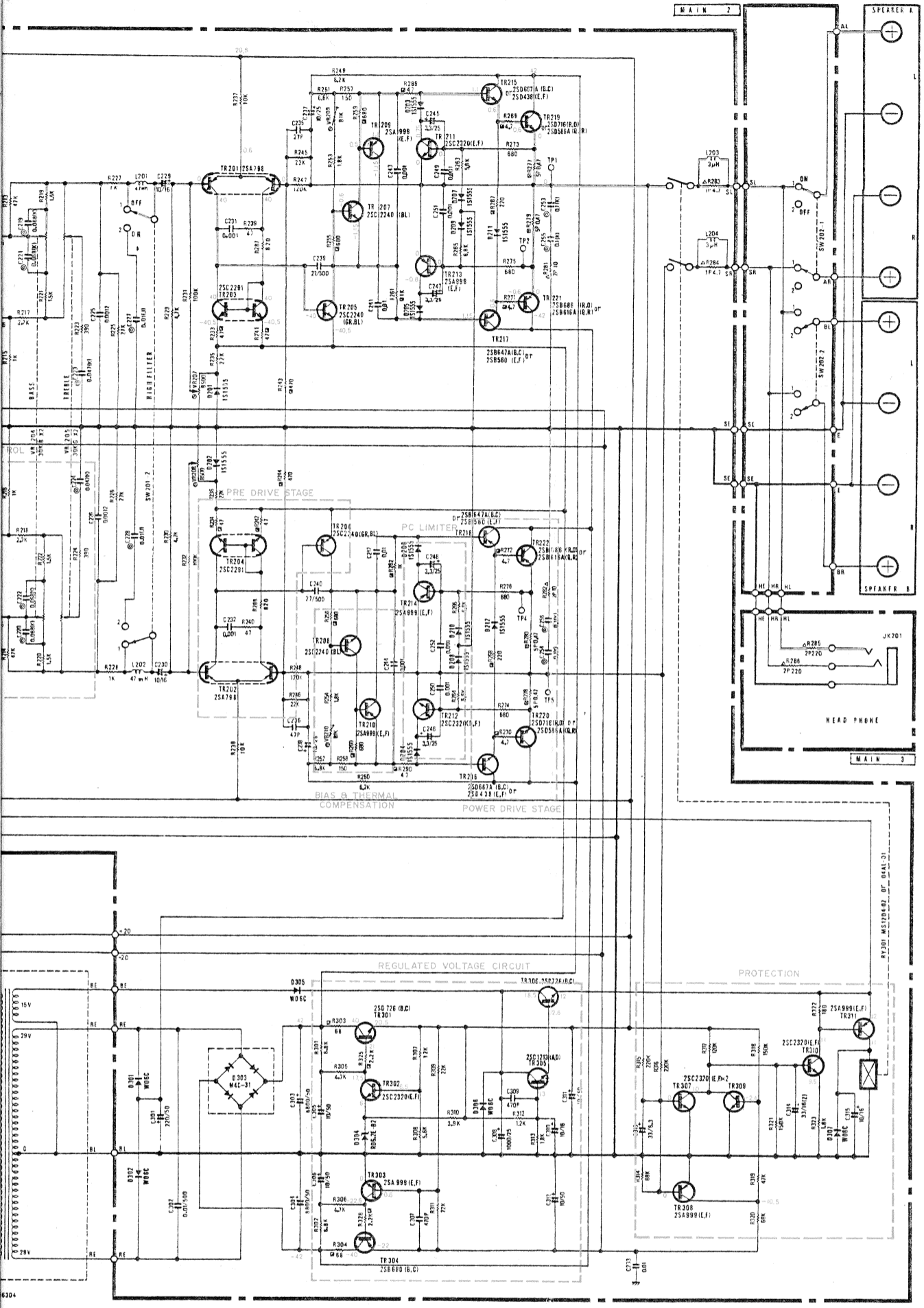
CAPACITOR	
REMARKS	PARTS
NO MARK	CERAMIC CAPACITOR
○	POLYSTYRENE CAPACITOR
⊙	MYLAR CAPACITOR
P.S.	P.S. CAPACITOR





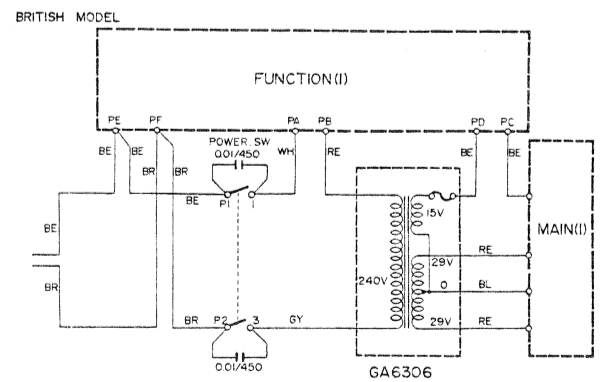
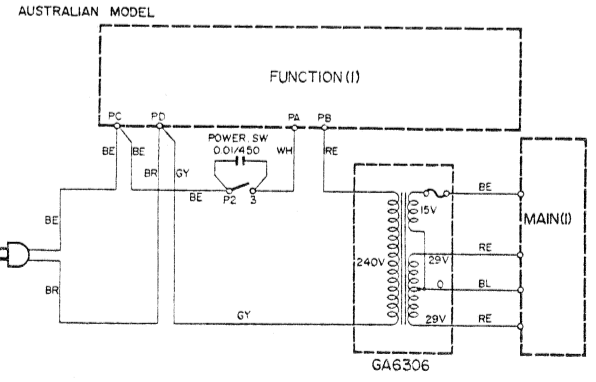
- TRANSISTOR
- TR103, TR107, TR109, TR211, TR302, TR307, TR310
- 25C232 (Complete to 25A9)
- TR201, 25A798
- TR101, TR105, 25A999
- TR207, 25C2240
- TR215, 25D667A (Complete to 25A9)
- TR217, 25B560 (Complete to 25A9)
- TR219, 25D586A (Complete to 25B16)
- TR301, 30D726 (Complete to 25B16)
- D101, 10D201 ~ 25B1555
- D301, 30D305, 30D706
- W06C
- D303, MAC-31

- WIRE
- BL ▶ B
 - BR ▶ B
 - OR ▶ R
 - YE ▶ Y
 - GR ▶ G
 - BE ▶ B



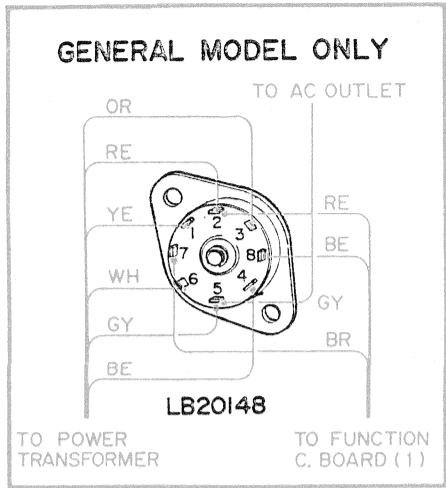
TRANSISTOR, DIODE, PIN CONNECTION

TR103, 104, TR107, 108, TR109, 110, TR211, 212, TR302, 312, TR307, 309, TR310	TR111, 112, TR206, 210, TR213, 214, TR303, 308, TR311
2SC2320 (E,F) (Complementary to 2SA999)	2SA999 (E,F) (Complementary to 2SC2320)
TR201, 202 2SA798	TR203, 204 2SC2291
TR101, 102, TR105, 106 2SA999L (E,F)	TR205, 206 2SC2240 (GR,BL)
TR207, 208 2SC2240 (BL)	TR305 2SC1213A (D)
TR215, 216 2SD667A (B,C) (Complementary to 2SB647A)	TR215, 216 2SD438 (E,F) (Complementary to 2SB560)
TR217, 218 2SB560 (E,F) (Complementary to 2SD438)	TR217, 218 2SB647A (B,C) (Complementary to 2SD667A)
TR219, 220 2SD716 (R,O) (Complementary to 2SB686)	TR221, 222 2SB686 (R,O) (Complementary to 2SD716)
TR219, 220 2SD586A (Q,R) (Complementary to 2SB616A)	TR221, 222 2SB616A (Q,R) (Complementary to 2SD586)
TR301, 306 2SD726 (B,C)	TR304 2SB690 (B,C)
D101, 102, D201 ~ 212 1S1555	D304 RD6, 2EB2
D301, 302, D305, 307 W06C	IC201, 202 M5214L
D303 M4C-31	

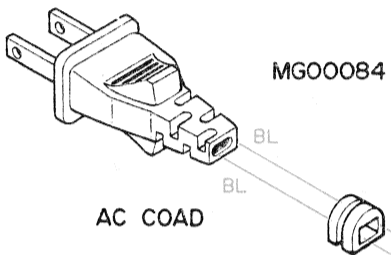


- WIRE COLOR ABBREVIATIONS
- BL ▶ Black
 - BR ▶ Brown
 - RE ▶ Red
 - OR ▶ Orange
 - YE ▶ Yellow
 - GR ▶ Green
 - BE ▶ Blue
 - VI ▶ Violet
 - GY ▶ Gray
 - WH ▶ White
 - GG ▶ Grass Green
 - SB ▶ Sky Blue
 - PK ▶ Pink

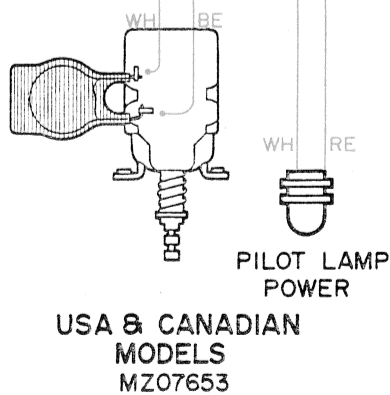
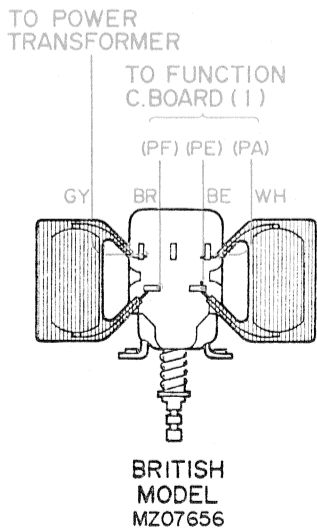
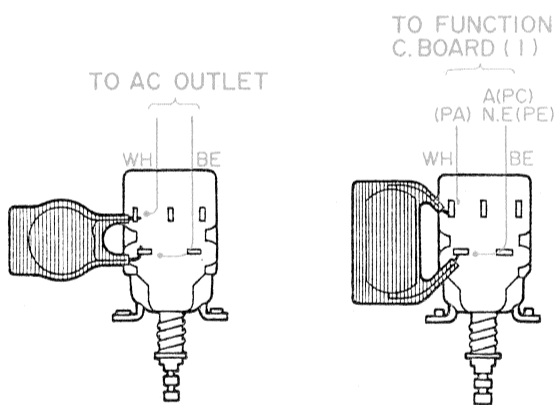
PRINTED CIRCUIT BOARD WIRING



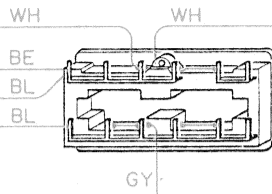
USA & CANADIAN MODELS



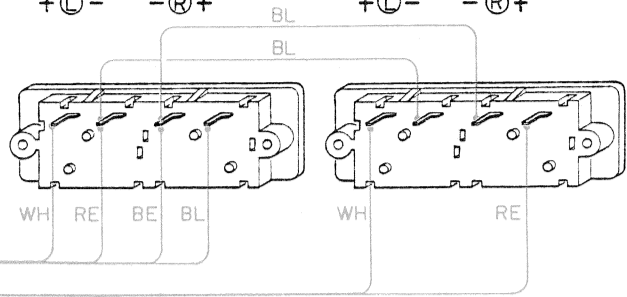
- GENERAL MODEL : MG00078
- N. EUROPEAN MODEL : MG00086
- AUSTRALIAN MODEL : MG00092
- BRITISH MODEL : MZ07289



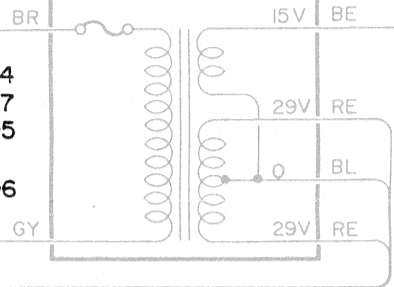
AC OUTLET



SPEAKER A +Ⓛ - Ⓡ+ **SPEAKER B** +Ⓛ - Ⓡ+

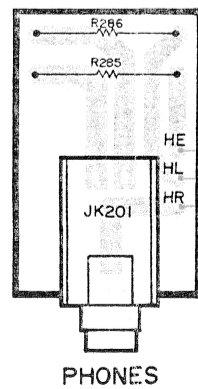


POWER TRANSFORMER

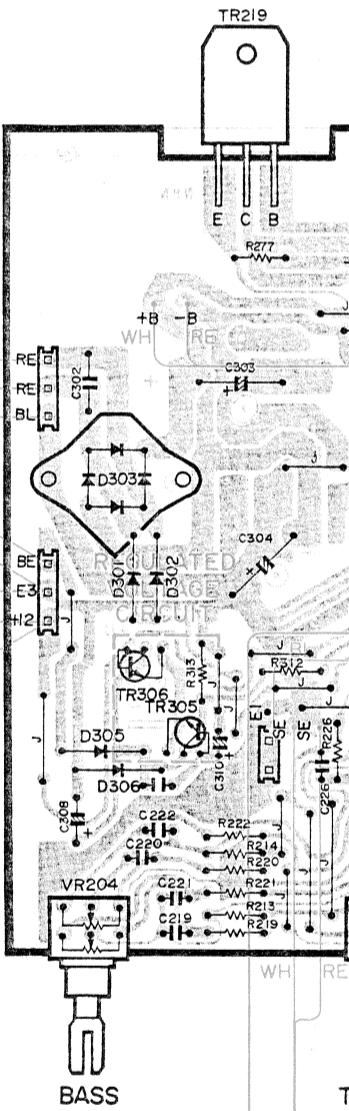
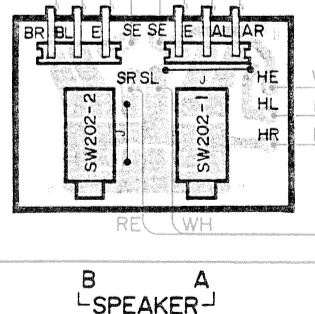


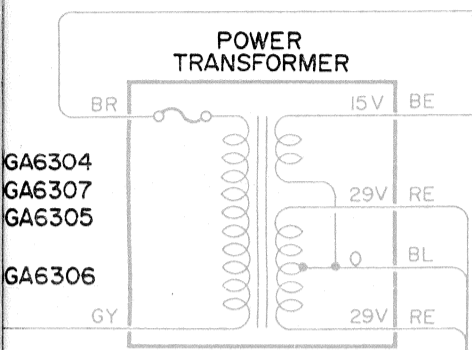
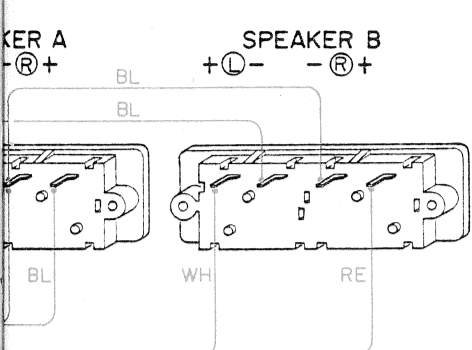
- USA & CANADIAN MODELS : GA6304
- GENERAL MODEL : GA6307
- N. EUROPEAN MODEL : GA6305
- BRITISH & AUSTRALIAN MODELS : GA6306

MAIN C. BOARD (3)

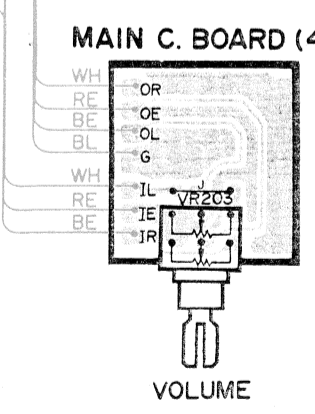
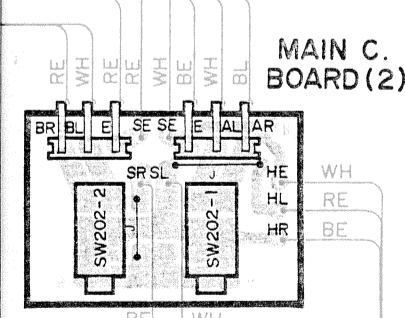
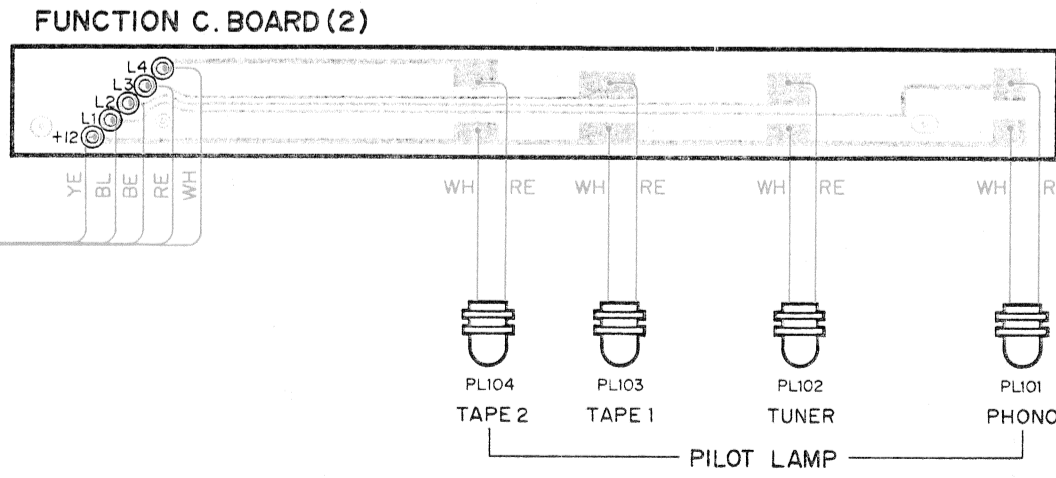
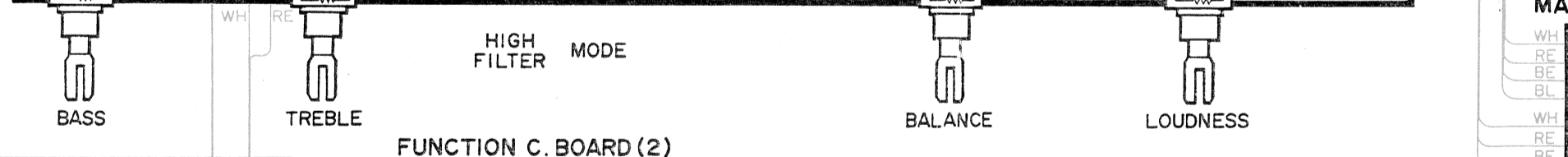
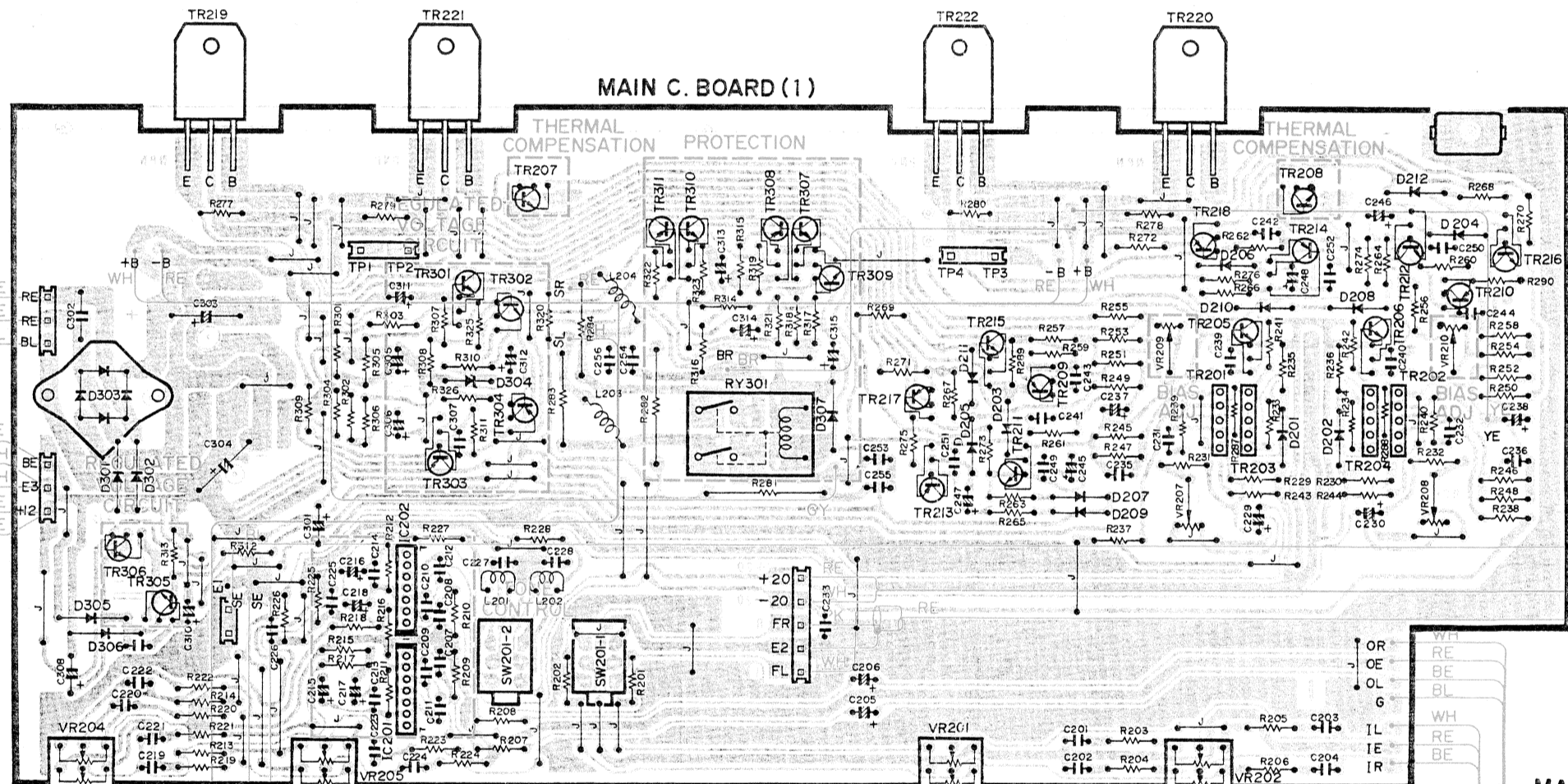
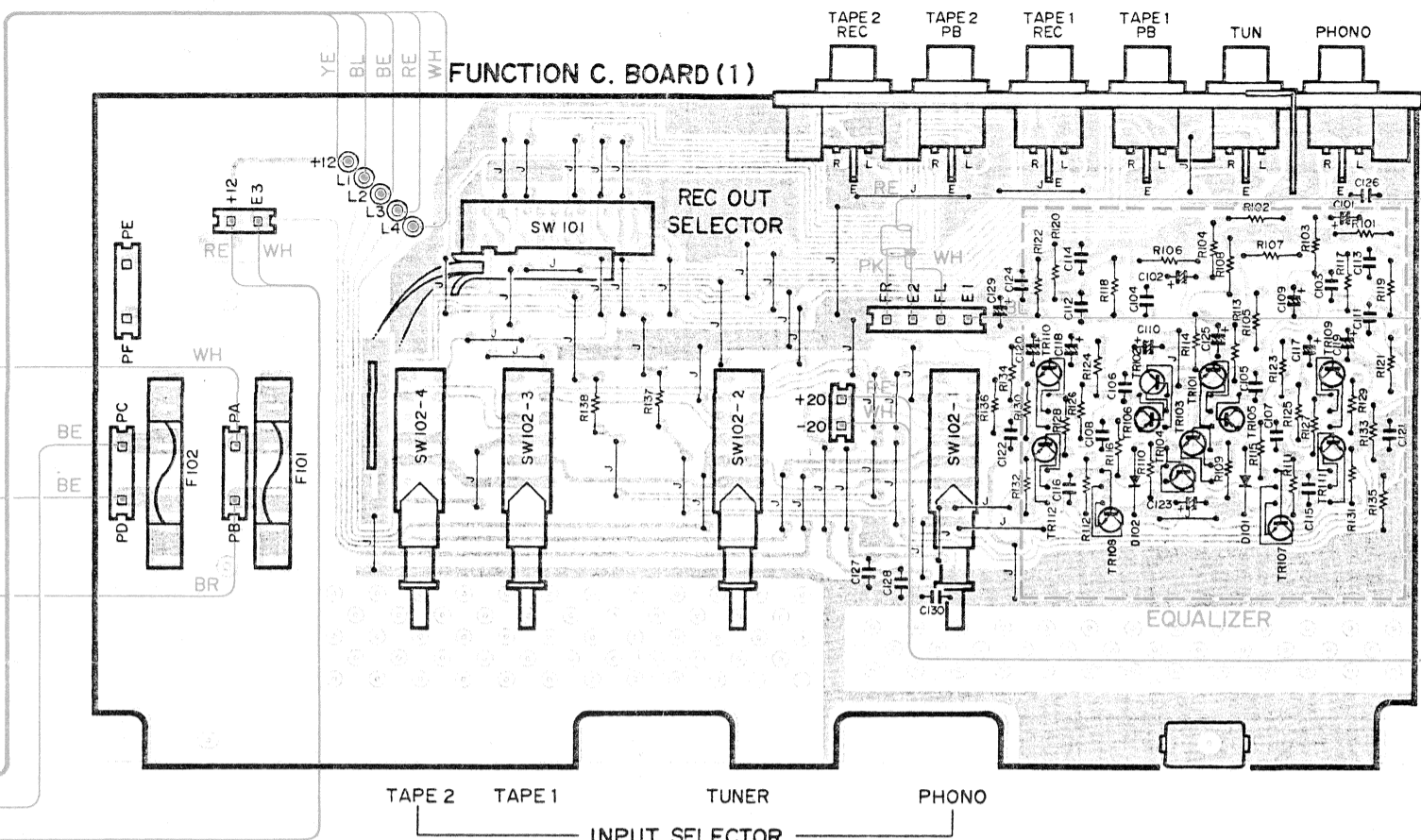


MAIN C. BOARD (2)

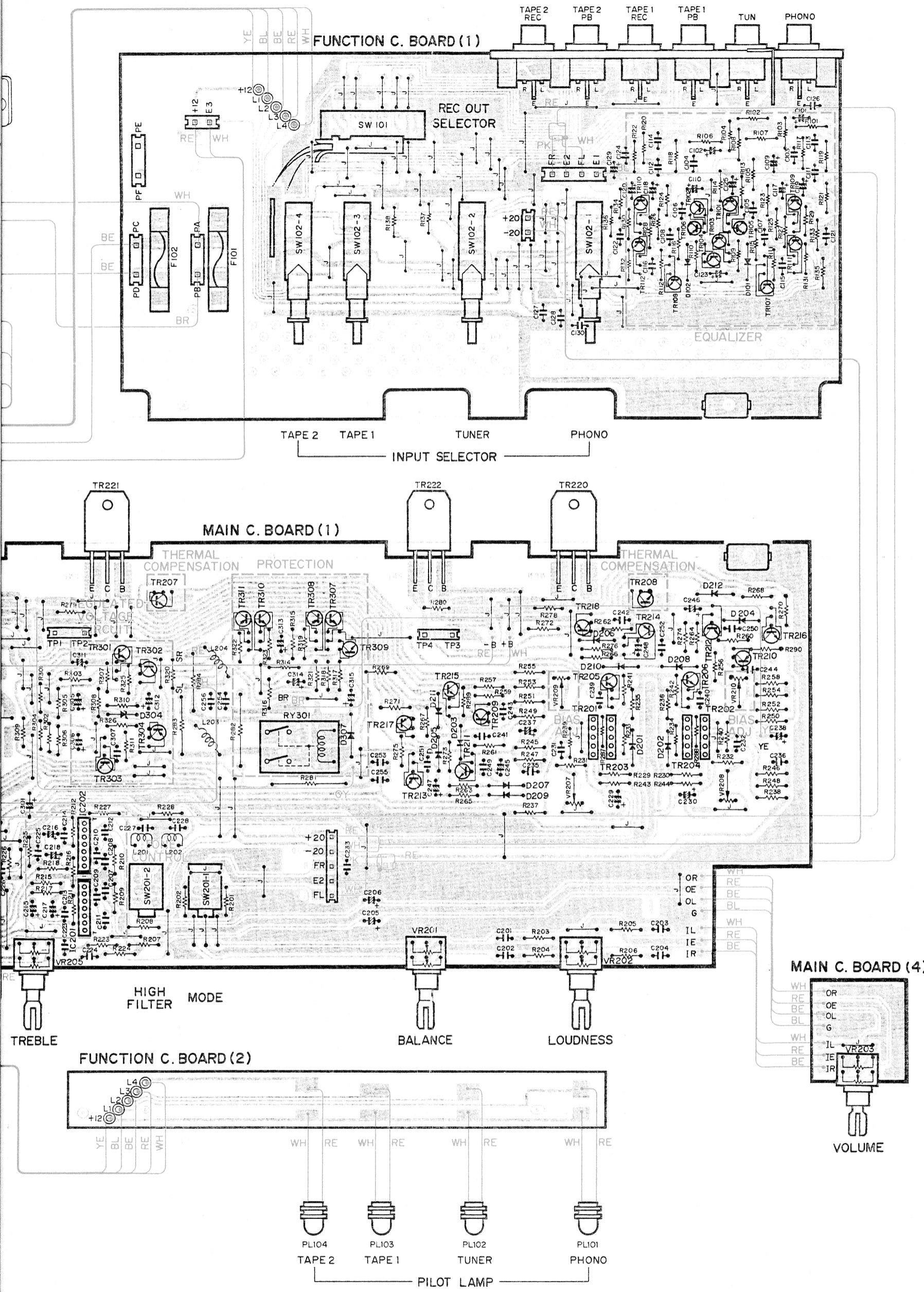




GA6304
 GA6307
 GA6305
 GA6306



B A
 SPEAKER



PARTS LIST

A-550

SINCE 1887

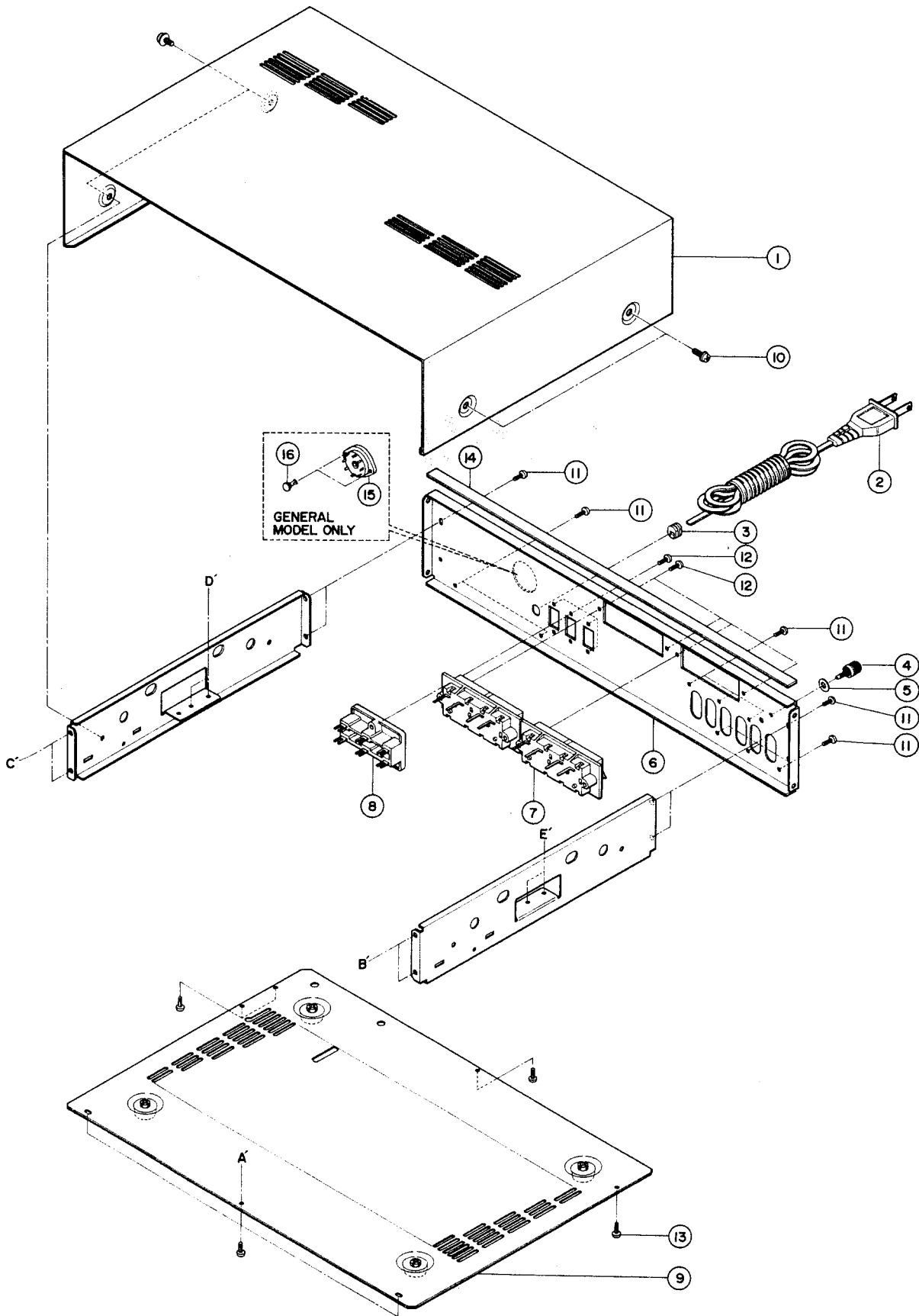


YAMAHA

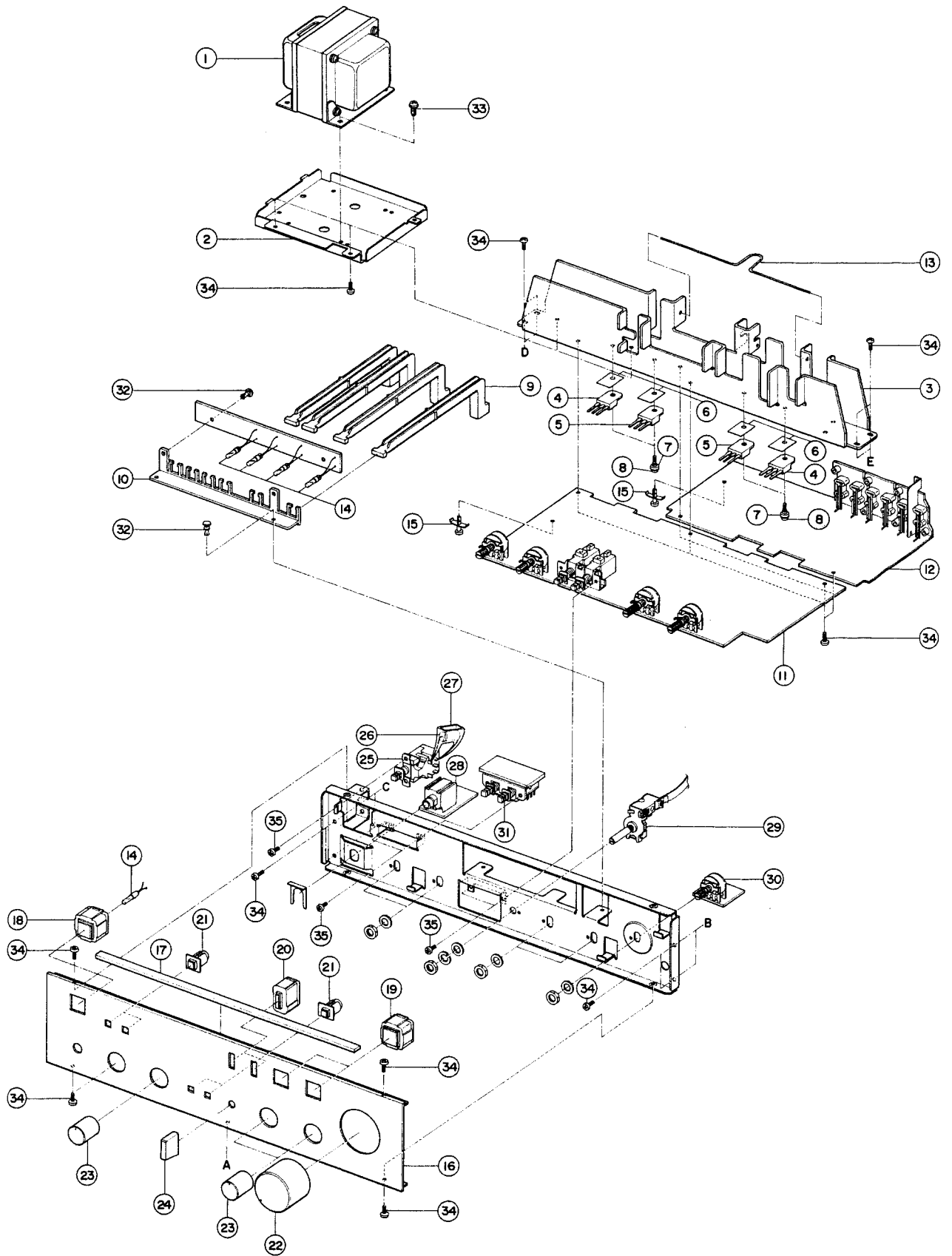
NIPPON GAKKI CO., LTD. HAMAMATSU, JAPAN

All parts are subject to change without notice.

EXPLODED VIEW



EXPLODED VIEW



■ PARTS LIST

※ New Parts

Ref. No.	Part No.	Description	(部 品 名)	Remarks	Common model	Markets
※ 1	32'00'00 MZ 07'65'70	Power Transformer Ass'y	電源トランスAss'y			R
※	42'00'00 GA 63'04'00	Power Transformer	電源トランス			U,C
※	42'00'00 GA 63'05'00	"	"			G
※	42'00'00 GA 63'06'00	"	"			A,B
※ 2	32'00'00 AA 09'80'90	Transformer Holder #9809	トランスホルダー			R,A,G,B
※	32'00'00 AA 60'01'00	" #60010	"			U,C
※ 3	32'00'00 BA 107'61'60	Heat Sink #7616	放熱板			
※ 4	42'00'00 iD 07'16'00	Power Transistor 2SD716 R,O	パワートランジスタ	Inter-changeable		
※	42'00'00 iD 05'86'10	" 2SD586A Q,R	"			
※ 5	42'00'00 iB 06'86'00	" 2SB686 R,O	"	Inter-changeable		
※	42'00'00 iB 06'16'10	" 2SB616A Q,R	"			
※ 6	42'00'00 iL 00'04'60	Mica Base AC-238	マイカベース	used 2SD716, 2SB686		
※	42'00'00 iL 00'04'20	" S-22	"	used 2SD586A, 2SB616A		
※ 7	42'00'00 iL 00'04'00	Bush	絶縁ブッシュ	used 2SD716, 2SB686		
※	32'00'00 CB 07'28'80	"	"	used 2SD586A, 2SB616A		
※ 8	42'00'00 EK 03'50'30	B.W. Head Tapping Screw 3 x 12 (ZMC2-Y)	鉄B.W.ヘッドタッピンネジ	used 2SD716, 2SB686		
※	42'00'00 EK 03'50'40	B.W. Head Tapping Screw 2.6 x 12 (ZMC2-Y)	"	used 2SD586A, 2SB616A		
※ 9	32'00'00 CB 09'24'20	Rod #9242	ロッド			
※ 10	32'00'00 CB 09'24'30	Rod Holder #9243	ロッドホルダー			
※ 11	32'00'00 NA 07'36'00	Main C. Board	メインシート			R,A,G,C,B
※	32'00'00 NA 07'36'10	"	"			U
※	32'00'00 NA 07'36'20	"	"	Black Model		G
※ 12	32'00'00 NA 07'35'50	Function C. Board	ファンクションシート			R
※	32'00'00 NA 07'35'60	"	"			U
※	32'00'00 NA 07'35'70	"	"			A
※	32'00'00 NA 07'35'80	"	"			G,B
※	32'00'00 NA 07'35'90	"	"			C
※ 13	32'00'00 AA 09'81'10	Rod Stay #9811	ロッドスティ			
※ 14	42'00'00 JB 00'06'80	Pilot Lamp 14.5V, 80mA	パイロットランブリード式			
※ 15	32'00'00 CB 08'60'30	P.C. Board Spacer #8603	プリントスペーサー			
※ 16	32'00'00 BA 07'71'80	Front Panel #7718	フロントパネル			
※	32'00'00 BA 07'73'90	" #7739	"	Black Model		
※ 17	42'00'00 CB 07'98'80	Anti Vibrator Tape #7988	防振テープ			R,A,G,B
※	42'00'00 CB 07'98'70	" #7987	"			U,C
※ 18	32'00'00 NB 09'14'30	Push Button Ass'y #9143	プッシュボタンAss'y			
※	32'00'00 NB 09'14'20	" #9142	"	Black Model		
※ 19	32'00'00 NB 09'14'50	" #9145	"			
※	32'00'00 NB 09'14'40	" #9144	"	Black Model		
※ 20	32'00'00 NB 09'14'70	" #9147	"			
※	32'00'00 NB 09'14'60	" #9146	"	Black Model		
※ 21	32'00'00 NB 09'39'20	" #9149	"			
※	32'00'00 NB 09'39'30	" #9148	"	Black Model		
※ 22	32'00'00 BA 07'33'80	Volume Knob #7338	ボリュームツマミ			
※	32'00'00 BA 07'60'80	" #7608	"	Black Model		
※ 23	32'00'00 BA 07'59'50	T.C. Knob #7595	トーンコンツマミ			
※	32'00'00 BA 07'59'60	" #7596	"	Black Model		
※ 24	32'00'00 BA 07'59'70	Switch Knob #7597	スイッチツマミ			
※	32'00'00 BA 07'59'80	" #7598	"	Black Model		
※ 25	42'00'00 KA 80'05'00	Push Switch SDG1P 125V 5A	プッシュスイッチ			U,C
※	42'00'00 KA 80'05'10	" SDG5P-E 250V 5/80A	"			R,A,G,B
※ 26	42'00'00 FZ 00'15'60	Spark Quencher Cap. 0.01μF 450VAC	スパークキラーコン			A,G,B
※	42'00'00 FZ 00'20'30	Ceramic Cap. 0.01μF 250VAC	セラコン			R,U,C
※ 27	42'00'00 CB 08'86'90	Condenser Cover	コンデンサカバー			A,G,B

※ New Parts

Ref. No.	Part No.	Description	(部 品 名)	Remarks	Common model	Markets
	32,00,00 NA 07,35,50	Function C. Board	ファンクションシート			R
	32,00,00 NA 07,35,60	"	"			U
	32,00,00 NA 07,35,70	"	"			A
	32,00,00 NA 07,35,80	"	"			G,B
	32,00,00 NA 07,35,90	"	"			C
C101 C102	42,00,00 FZ 00,04,90	Electrolytic Cap.	4.7 μ F/35V	ケミコン タテ型		
C103 C104	42,00,00 FG 15,22,20	Ceramic Cap.	220pF/50V	セラコン		
C105 C106	42,00,00 FG 51,21,00	"	100pF/50V	"		
C107 C108	42,00,00 FG 71,32,20	"	0.0022 μ F/50V	"		
C109 C110	42,00,00 FZ 00,08,40	Electrolytic Cap.	100 μ F/6.3V	ケミコン タテ型		
C111 C112	42,00,00 FT 36,45,60	Polypropylene Film Cap.	0.056 μ F/50V	ポリプロピレンコンデンサ		
C113 C114	42,00,00 FT 36,41,60	"	0.016 μ F/50V	"		
C115 C116	42,00,00 FG 71,12,20	Ceramic Cap.	22pF/50V	セラコン		
C117 C118	42,00,00 FJ 33,71,00	Electrolytic Cap.	10 μ F/10V	ケミコン タテ型		
C119 C120	42,00,00 FJ 54,63,30	"	3.3 μ F/25V	"		
C121 C122	42,00,00 FA 11,41,00	Mylar Cap.	0.01 μ F/50V	マイラーコン		
C123	42,00,00 FJ 16,61,00	Electrolytic Cap.	1 μ F/50V	ケミコン タテ型		
C124	42,00,00 FG 54,41,00	Ceramic Cap.	0.01 μ F/50V	セラコン		
C125	42,00,00 FJ 16,61,00	Electrolytic Cap.	1 μ F/50V	ケミコンタテ型		
C126 ~ C128	42,00,00 FG 54,41,00	Ceramic Cap.	0.01 μ F/50V	セラコン		
C129	42,00,00 FJ 16,61,00	Electrolytic Cap.	1 μ F/50V	ケミコン タテ型		
C130	42,00,00 FG 54,41,00	Ceramic Cap.	0.01 μ F/50V	セラコン		
R101 R102	42,00,00 HJ 35,75,60	Carbon Resistor	56k Ω	カーボン抵抗		
R103 R104	42,00,00 HJ 35,51,00	"	100 Ω	"		
R105 R106	42,00,00 HJ 35,62,70	"	2.7k Ω	"		
R107 R108	42,00,00 HJ 35,51,00	"	100 Ω	"		
R109 R110	42,00,00 HJ 35,52,20	"	220 Ω	"		
R111 R112	42,00,00 HJ 35,51,00	"	100 Ω	"		
R113 R114	42,00,00 HJ 35,71,20	"	12k Ω	"		
R115 R116	42,00,00 HJ 35,52,20	"	220 Ω	"		
R117 R118	42,00,00 HK 36,75,60	"	56k Ω	"		
R119 R120	42,00,00 HK 36,64,70	"	4.7k Ω	"		
R121 R122	42,00,00 HJ 35,51,00	"	100 Ω	"		
R123 ~ R126	42,00,00 HJ 35,62,70	"	2.7k Ω	"		
R127 R128	42,00,00 HJ 35,53,90	"	390 Ω	"		
R129 ~ R132	42,00,00 HV 35,43,30	Fire Proof Resistor	33 Ω	不燃化カーボン抵抗		
R133 R134	42,00,00 HJ 35,52,20	Carbon Resistor	220 Ω	カーボン抵抗		
R135 R136	42,00,00 HJ 35,74,70	"	47k Ω	"		
R137 R138	42,00,00 HJ 35,53,90	"	390 Ω	"		
TR101 TR102	42,00,00 iA 09,99,30	Transistor	2SA999L E,F	トランジスタ		
TR103 TR104	42,00,00 iC 23,20,10	"	2SC2320 E,F	"		
TR105 TR106	42,00,00 iA 09,99,30	"	2SA999L E,F	"		
TR107 TR108	42,00,00 iC 23,20,10	"	2SC2320 E,F	"		
TR109 TR110	42,00,00 iC 23,20,10	"	2SC2320 E,F	"		
TR111 TR112	42,00,00 iA 09,99,30	"	2SA999 E,F	"		
D101 D102	42,00,00 iF 00,00,40	Diode	1S1555	ダイオード		
F101	42,00,00 KB 00,03,50	Fuse	2AT 250V	ヒューズ		A
	42,00,00 KB 00,03,80	"	4AT 250V	"		R
	42,00,00 KB 00,07,40	"	1.6AT 250V	"		G,B
	42,00,00 KB 00,10,50	" UL	4A 250V	"		U,C
F102	42,00,00 KB 00,03,50	"	2AT 250V	"		R
	42,00,00 KB 00,07,50	"	2AT 250V	"		G,B
	42,00,00 KB 00,10,30	" UL	2A 250V	"		U,C

※ New Parts

Ref. No.	Part No.	Description	(部 品 名)	Remarks	Common model	Markets
PJ101 ~PJ103	42'00'00 LB 40'03'10	Pin Jack (4P)	ピンジャック			
	42'00'00 LA 00'20'30	Lapping Terminal P = 5 4P	i 型ラッピング端子板			
	42'00'00 LA 00'21'10	" P = 5 2P	"			
	42'00'00 LA 00'21'40	" P = 10 2P	"			
	42'00'00 LA 00'25'80	" P = 10 2P	"			A,G,B
	42'00'00 LB 20'09'00	Fuse Holder Pin	ヒューズホルダーピン			R,U,C,A
	42'00'00 LB 20'10'60	"	"			G,B
※	42'00'00 Mi 06'98'10	Wire UL2468 5P 600 6-6	リボンワイヤー			
PL101 ~PL104	42'00'00 JB 00'06'80	Pilot Lamp 80mA 14.5V	パイロットランプリード式			
	32'00'00 BB 06'83'70	Earth Plate #6837	アース金具			
	32'00'00 AA 09'81'00	Shield Plate #9810	シールド板			
	32'00'00 AA 08'29'10	" #8291	"			
※	SW101 42'00'00 KA 90'13'90	Remote Rotary Switch	リモートロータリースイッチ			
※	SW102 42'00'00 KA 80'12'70	Push Switch	プッシュスイッチ			
※	32'00'00 NA 07'36'00	Main C. Board	メインシート			R,A,G,C,B
※	32'00'00 NA 07'36'10	"	"			U
※	32'00'00 NA 07'36'20	"	"	Black Model		G
C201 C202	42'00'00 FA 11'43'30	Mylar Cap. 0.033μF/50V	マイラーコン			
C203 C204	42'00'00 FG 21'25'60	Ceramic Cap. 560pF/50V	セラコン			
C205 C206	42'00'00 FJ 16'61'00	Electrolytic Cap. 1μF/50V	ケミコン タテ型			
C207 C208	42'00'00 FG 21'14'70	Ceramic Cap. 47pF/50V	セラコン			
C209 C210	42'00'00 FG 21'12'20	" 22pF/50V	"			
C211 C212	42'00'00 FG 21'11'50	" 15pF/50V	"			
C213 C214	42'00'00 FG 21'12'20	" 22pF/50V	"			
C215 C216	42'00'00 FJ 54'63'30	Electrolytic Cap. 3.3μF/25V	ケミコン タテ型			
C217 C218	42'00'00 FJ 33'73'30	" 33μF/16V	"			
C219 ~C222	42'00'00 FA 11'46'80	Mylar Cap. 0.068μF/50V	マイラーコン			
C223 C224	42'00'00 FA 11'44'70	" 0.047μF/50V	"			
※	C225 C226	42'00'00 FG 71'31'20	Ceramic Cap. 0.0012μF/50V	セラコン		
	C227 C228	42'00'00 FA 15'41'00	Mylar Cap. 0.01μF/50V	マイラーコン		
	C229 C230	42'00'00 FJ 33'71'00	Electrolytic Cap. 10μF/16V	ケミコン タテ型		
	C231 C232	42'00'00 FG 71'31'00	Ceramic Cap. 0.001μF/50V	セラコン		
	C233	42'00'00 FG 24'41'00	" 0.01μF/50V	"		
	C235 C236	42'00'00 FG 21'12'70	" 27pF/50V	"		
	C237 C238	42'00'00 FJ 14'71'00	Electrolytic Cap. 10μF/25V	ケミコン タテ型		
※	C239 C240	42'00'00 FH 61'12'70	Ceramic Cap. 27pF/500V	セラコン		
	C241 C242	42'00'00 FG 24'41'00	" 0.01μF/50V	"		
	C243 C244	42'00'00 FG 71'31'00	" 0.001μF/50V	"		
	C245 ~C248	42'00'00 FJ 54'63'30	Electrolytic Cap. 3.3μF/25V	ケミコンタテ型		
	C249 ~C252	42'00'00 FG 71'31'00	Ceramic Cap. 0.001μF/50V	セラコン		
	C253 ~C256	42'00'00 FA 11'51'00	Mylar Cap. 0.1μF/50V	マイラーコン		
	C301	42'00'00 FJ 26'82'20	Electrolytic Cap. 220μF/50V	ケミコン タテ型		
	C302	42'00'00 FH 23'41'00	Ceramic Cap. 0.01μF/500V	セラコン		
	C303 C304	42'00'00 FM 73'96'80	Electrolytic Cap. 6800μF/50V	ケミコン基板型		
※	C305 C306	42'00'00 FZ 00'21'20	" 10μF/50V	ケミコンタテ型 防爆型		
	C307	42'00'00 FG 21'24'70	Ceramic Cap. 470pF/50V	セラコン		
※	C308	42'00'00 FW 84'91'00	Electrolytic Cap. 1000μF/25V	ケミコンタテ型 防爆型		
	C309	42'00'00 FG 21'24'70	Ceramic Cap. 470pF/50V	セラコン		
※	C310	42'00'00 FZ 00'21'10	Electrolytic Cap. 10μF/50V	ケミコンタテ型 防爆型		
	C311 C312	42'00'00 FJ 16'71'00	" 10μF/50V	ケミコン タテ型		
	C313	42'00'00 FJ 11'73'30	" 33μF/6.3V	"		

※ New Parts

Ref. No.	Part No.	Description	(部 品 名)	Remarks	Common model	Markets
C314	42,00,00 FM 39,73,30	Electrolytic Cap.	33 μ F/16V	ケミコンタテ型		
C315	42,00,00 FJ 33,71,00	"	10 μ F/16V	"		
L201 L202	42,00,00 GE 20,01,80	MPX Coil	47mH	MPX固定コイル		
L203 L204	42,00,00 GD 90,02,80	Coil	3 μ H	コイル		
R201 R202	42,00,00 HJ 35,64,70	Carbon Resistor	4.7k Ω	カーボン抵抗		
R203 R204	42,00,00 HJ 35,71,00	"	10k Ω	"		
R205 R206	42,00,00 HJ 35,73,30	"	33k Ω	"		
R207 R208	42,00,00 HJ 35,55,60	"	560 Ω	"		
R209 R210	42,00,00 HJ 35,84,70	"	470k Ω	"		
R211 ~R214	42,00,00 HJ 35,74,70	"	33k Ω	"		
R215 R216	42,00,00 HJ 35,61,00	"	1k Ω	"		
R217 R218	42,00,00 HJ 35,62,70	"	2.7k Ω	"		
R219 ~R222	42,00,00 HJ 35,61,50	"	1.5k Ω	"		
R223 R224	42,00,00 HJ 35,53,90	"	390 Ω	"		
R225 R226	42,00,00 HJ 35,72,70	"	27k Ω	"		
R227 R228	42,00,00 HJ 35,61,00	"	1k Ω	"		
R229 R230	42,00,00 HJ 35,64,70	"	4.7k Ω	"		
R231 R232	42,00,00 HJ 35,81,00	"	100k Ω	"		
R233 R234	42,00,00 HV 35,44,70	Fire Proof Resistor	47 Ω	不燃化カーボン抵抗		
R235 R236	42,00,00 HJ 35,72,20	Carbon Resistor	22k Ω	カーボン抵抗		
R237 R238	42,00,00 HJ 35,71,00	"	10k Ω	"		
R239 R240	42,00,00 HJ 35,44,70	"	47 Ω	"		
R241 R242	42,00,00 HV 35,44,70	Fire Proof Resistor	47 Ω	不燃化カーボン抵抗		
R243 R244	42,00,00 HV 35,54,70	"	470 Ω	"		
R245 R246	42,00,00 HJ 35,72,20	Carbon Resistor	22k Ω	カーボン抵抗		
R247 R248	42,00,00 HJ 35,81,20	"	120k Ω	"		
R249 R250	42,00,00 HJ 35,68,20	"	8.2k Ω	"		
R251 R252	42,00,00 HJ 35,66,80	"	6.8k Ω	"		
R253 R254	42,00,00 HJ 35,61,80	"	1.8k Ω	"		
R255 R256	42,00,00 HV 35,56,80	Fire Proof Resistor	680 Ω	不燃化カーボン抵抗		
R257 R258	42,00,00 HJ 35,51,50	Carbon Resistor	150 Ω	カーボン抵抗		
R259 R260	42,00,00 HV 35,56,80	Fire Proof Resistor	680 Ω	不燃化カーボン抵抗		
R261 R262	42,00,00 HV 35,61,00	"	1k Ω	"		
R263 R264	42,00,00 HJ 35,65,60	Carbon Resistor	5.6k Ω	カーボン抵抗		
R265 R266	42,00,00 HJ 35,66,80	"	6.8k Ω	"		
R267 R268	42,00,00 HV 35,52,20	Fire Proof Resistor	220 Ω	不燃化カーボン抵抗		
R269 ~R272	42,00,00 HV 35,34,70	"	4.7 Ω	"		
R273 ~R276	42,00,00 HJ 35,56,80	Carbon Resistor	680 Ω	カーボン抵抗		
R277 ~R280	42,00,00 HZ 00,10,30	Metal Plate Resistor	0.47 Ω 5W	金属板抵抗		
R281 R282	42,00,00 HL 42,41,00	Metal Oxide Film Resistor	RSF2BL25 10 Ω	酸化抵抗		
R283 R284	42,00,00 HL 51,34,70	"	RSF1BL20 4.7 Ω	"		
R285 R286	42,00,00 HL 32,52,20	"	220 Ω 2W	"		
R287 R288	42,00,00 HJ 35,58,20	Carbon Resistor	820 Ω	カーボン抵抗		
R289 R290	42,00,00 HV 35,44,70	Fire Proof Resistor	47 Ω	不燃化カーボン抵抗		
R301 R302	42,00,00 HJ 35,66,80	Carbon Resistor	6.8k Ω	カーボン抵抗		
R303 R304	42,00,00 HV 35,46,80	Fire Proof Resistor	68 Ω	不燃化カーボン抵抗		
R305 R306	42,00,00 HJ 35,64,70	Carbon Resistor	4.7k Ω	カーボン抵抗		
R307	42,00,00 HJ 35,71,20	"	12k Ω	"		
R308	42,00,00 HJ 35,65,60	"	5.6k Ω	"		
R309	42,00,00 HJ 35,72,20	"	22k Ω	"		
R310	42,00,00 HJ 35,63,90	"	3.9k Ω	"		
R311	42,00,00 HJ 35,72,20	"	22k Ω	"		
R312	42,00,00 HJ 35,61,20	"	1.2k Ω	"		

* New Parts

Ref. No.	Part No.	Description	(部 品 名)	Remarks	Common model	Markets
R313	42,00,00 HJ 35,61,80	Carbon Resistor	1.8kΩ	カーボン抵抗		
R314	42,00,00 HJ 35,76,80	"	68kΩ	"		
R315 R316	42,00,00 HJ 35,82,20	"	220kΩ	"		
R317	42,00,00 HJ 35,81,20	"	120kΩ	"		
R318	42,00,00 HJ 35,81,50	"	150kΩ	"		
R319	42,00,00 HJ 35,74,70	"	47kΩ	"		
R320	42,00,00 HJ 35,76,80	"	68kΩ	"		
R321	42,00,00 HJ 35,81,50	"	150kΩ	"		
R322	42,00,00 HJ 35,51,80	"	180Ω	"		
R323	42,00,00 HJ 35,61,80	"	1.8kΩ	"		
R325 R326	42,00,00 HV 35,62,20	Fire Proof Resistor	2.2kΩ	不燃化カーボン抵抗		
VR201	42,00,00 HS 11,03,50	Volume	200kΩ Z x 2	可変抵抗	Inter-changeable	
	42,00,00 HS 31,03,60	"	200kΩ BH x 2	"		
* VR202	42,00,00 HS 31,09,00	"	100kΩ B x 2	"	Inter-changeable	
*	42,00,00 HS 11,04,40	"	"	"		
* VR203	42,00,00 HS 11,03,60	"	200kΩ x 2	"		
VR204	42,00,00 HS 31,08,40	"	30kΩ B x 2	"		
VR205	42,00,00 HS 31,08,50	"	30kΩ G x 2	"		
VR207 VR208	42,00,00 HT 77,00,20	Semi-Fixed Volume	500Ω B	半固定抵抗		
VR209 VR210	42,00,00 HT 77,00,30	"	1kΩ B	"		
TR201 TR202	42,00,00 iA 07,98,00	Dual Transistor	2SA798	トランジスタ		
TR203 TR204	42,00,00 iC 22,91,00	"	2SC2291	"		
TR205 TR206	42,00,00 iC 22,40,00	Transistor	2SC2240 GR,BL	"		
TR207 TR208	42,00,00 iC 22,40,10	"	2SC2240 BL	"		
TR209 TR210	42,00,00 iA 09,99,10	"	2SA999 E,F	"		
TR211 TR212	42,00,00 iC 23,20,10	"	2SC2320 E,F	"		
TR213 TR214	42,00,00 iA 09,99,10	"	2SA999 E,F	"		
TR215 TR216	42,00,00 iD 04,38,10	"	2SD438 E,F	"	Complementary to 2SB560	
	42,00,00 iD 06,67,10	"	2SD667A B,C	"	Complementary to 2SB647A	
TR217 TR218	42,00,00 iB 05,60,10	"	2SB560 E,F	"	Complementary to 2SD438	
	42,00,00 iB 06,47,10	"	2SB647A B,C	"	Complementary to 2SD667A	
TR301	42,00,00 iD 07,26,00	Transistor	2SD726 B,C	トランジスタ		
TR302	42,00,00 iC 23,20,10	"	2SC2320 E,F	"		
TR303	42,00,00 iA 09,99,10	"	2SA999 E,F	"		
TR304	42,00,00 iB 06,90,00	"	2SB690 B,C	"		
TR305	42,00,00 iC 12,13,40	"	2SC1213A D	"		
TR306	42,00,00 iD 07,26,00	"	2SD726 B,C	"		
TR307	42,00,00 iC 23,20,10	Transistor	2SC2320 E,F	トランジスタ		
TR308	42,00,00 iA 09,99,10	"	2SA999 E,F	"		
TR309 TR310	42,00,00 iC 23,20,10	"	2SC2320 E,F	"		
TR311	42,00,00 iA 09,99,10	"	2SA999 E,F	"		
D201 D212	42,00,00 iF 00,00,40	Diode	1S1555	ダイオード		
D301 D302	42,00,00 iH 00,07,10	"	W06C	"		
D303	42,00,00 iH 00,06,90	"	M4C-31	ダイオードブリッジ		
D304	42,00,00 iF 00,14,70	Zener Diode	RD6, 2EB2	ツェナーダイオード		
D305 D307	42,00,00 iH 00,07,10	Diode	W06C	ダイオード		
IC201 IC202	42,00,00 iG 03,49,00	IC	M5214L	IC		
SW201	42,00,00 KA 80,11,00	Push Switch		プッシュスイッチ		
SW202	42,00,00 KA 80,08,60	"	SUE22	"		
RY301	42,00,00 KC 00,06,60	Relay	MS12D4-OZ	リレー	Inter-changeable	
	42,00,00 KC 00,08,00	"	04AL-01	"		
* JK201	42,00,00 LB 30,10,20	Phones Jack	S-G2318 Black	ヘッドホンジャック	Inter-changeable	
*	42,00,00 LB 30,10,40	"	S-G2301 Gray	"		

