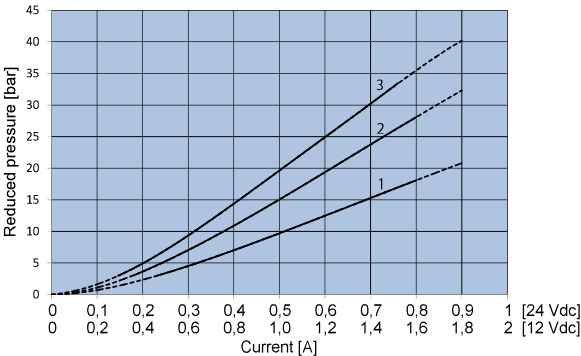
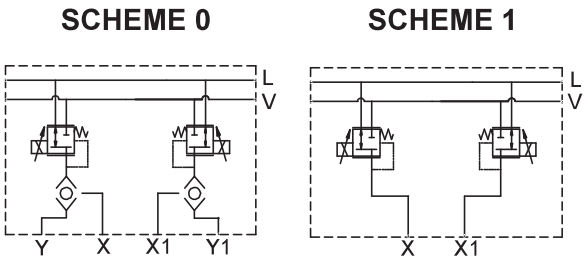
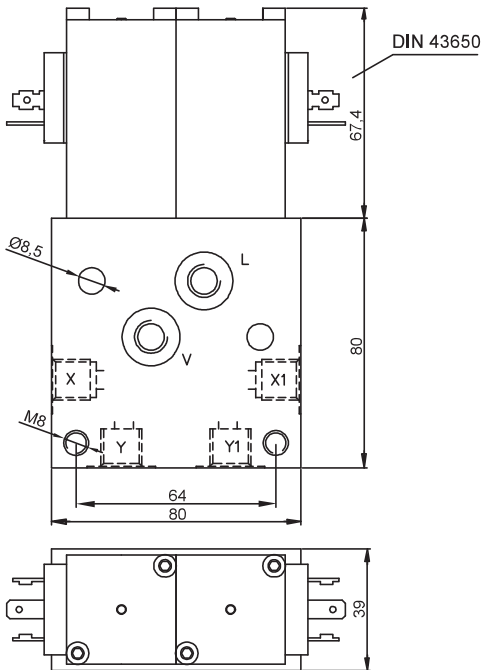


REMOTE CONTROL MANIFOLDS FOR HYDRAULIC

- Max working pressure in V. 50 bar
- Max working pressure in X:X1:Y:Y1 28 bar
- Max working pressure in L 1 bar
- Max working flow. 2 l/min
- Leakage. 16 cc/min
- Seals. NBR
- Max current at 12 Vcc. 1800 mA
- Max current at 24 Vcc. 900 mA
- Hysteresis 5%
- PWM 120 HZ
- Protection index with standard connector. IP-65
- Weight 2,5 Kg



COIL RESISTANCE [Ω]		VOLTAGE	
		1 (12Vcc)	2 (24Vcc)
REDUCED PRESSURE	1 (3÷18 bar)	3,7	15,5
	2 (3÷28 bar)	3,7	15,5
	3 (3÷33 bar)	4,8	19,3

Ordering code

