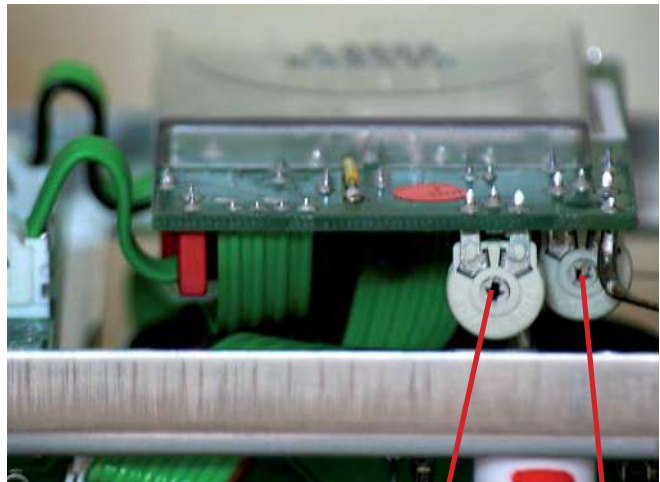


8 R6013: CRT minimum intensity

- Locate and identify R6013 CR-Board.
- Set INTENS. control to fully left position.
- Press X-Y pushbutton (IN position).
- Adjust R6013 so that the dot just disappears.
- Release XY pushbutton.

CR-Board



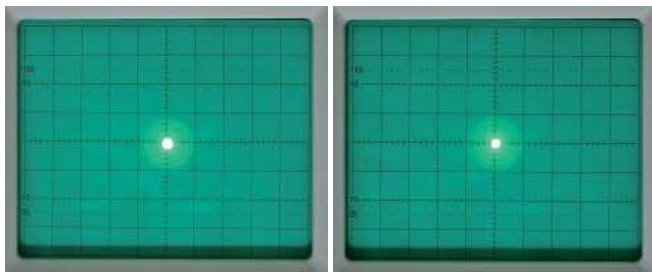
R6013

RV6024

9 RV1005: Focus symmetry

- Locate and identify RV1005 on PS-Board.
- Press X-Y pushbutton (IN position).
- Turn the INTENS knob clockwise until the dot is displayed.
- Turn the FOCUS knob fully clockwise and counter clockwise and adjust RV1005 for equal spot size in both (cw and ccw) conditions, so that the focus point is in midrange position.

Hnweis: Netzteil ab Seriennummer neunstellig



Fully counter clockwise

Fully clockwise

PS-Board



RV1005

RV1003