

Input: DC5V
 Power: ca. 0.3W/pcs
 Size: ca. D9.6mm for round PCB
 Color: RGB / RGBW
 PCB Color: white/black



Dimensions

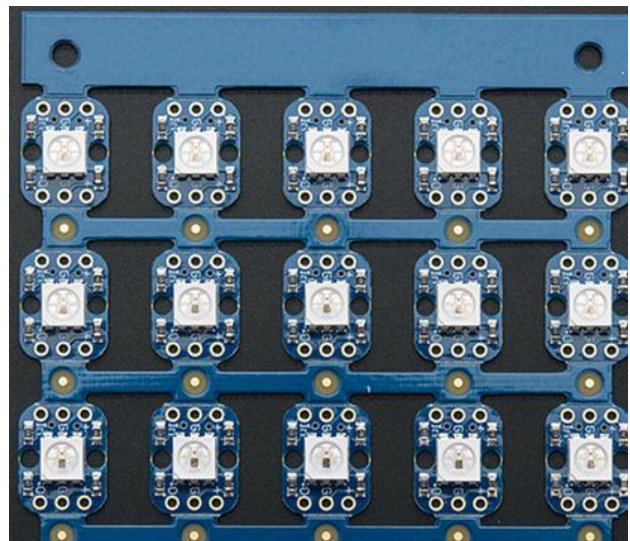


Abbildung ähnlich

Each one is separately. Very small size! Accept customized design, like square shape, and use other type IC!
 Specifications are subject to change without notice.

Details

Input Voltage	DC 5V
Luminous Flux (lm)	7-8lm/led
Working Temperature	-30 – 60

Notes:
 Tolerance for luminous flux is $\pm 15\%$
 Tolerance of measurements of forward voltage $\pm 0.2V$.
 Electrostatic sensitive device when handling, please use anti-electrostatic gloves.
 Please do not apply stress to the resin at high temperature.