



Installation Guide to Devicom™ PC•PRO LAN



Table of contents:

Introduction	3
System overview	4
Connecting your system units	5
Installing software	6
Finding NPorts on network	7
Configuring	10
Assigning IP addresses	12
Change Operating mode	13
Mapping COM ports	15
Re-assigning COM Ports	18
Exporting COM Settings	21
Configuring PC•PRO	23

1. Devicom™ PC•PRO LAN

The Devicom™ PC•PRO LAN is an Ethernet enabled soft- and hardware tool which gives you the possibility to connect to your devireg 550 thermostat network from any PC on your Ethernet network.

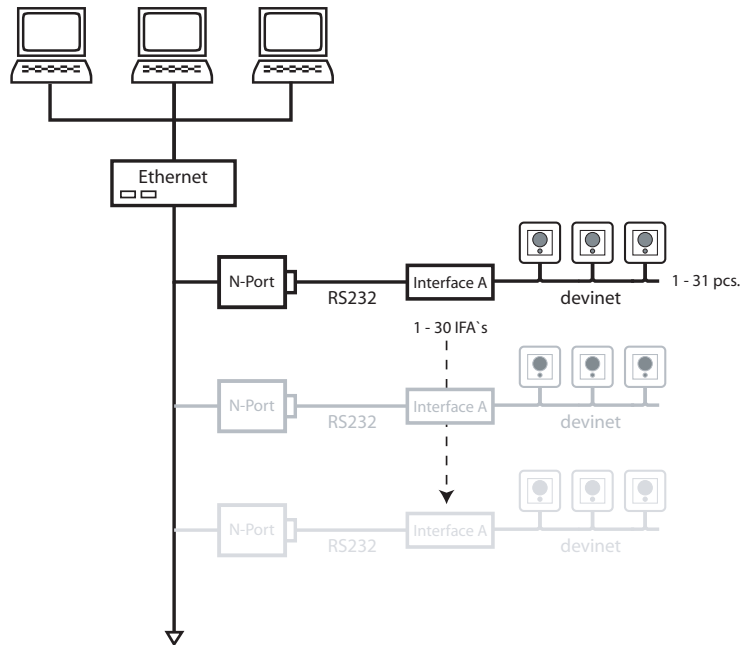
Today only the Devireg™ 550 can be installed in network, but with the setup of Devicom™ PC•PRO all settings and adjustments can be controlled from the computer, and from any PC on your local area network.

The software is multilingual and includes both an advanced and a simple user front end (targeted at the installer/end user)

A Windows ActiveX automation based API exist, making it possible to control Devireg™ 550 from 3rd party Building Automation Systems. You can download it from www.devi.com

2. System setup

Wire the complete system according to this diagram.



Connecting your system units

Step 1

Connect the 550s with two wires in parallel, use 1.5mm² wires. You can use the same cables, or pipes, to Devinet as for 230V mains.

Connect the devinet to the Devicom Interface A.

Connect the Devicom Interface A to the NPort with the RS232 cable/plug

Each Devicom Interface A can control up to 31 devireg™ 550. The Devicom PC•PRO software can handle 30 Interface A's, giving a total of 930 pieces of Devireg 550s in one single installation.

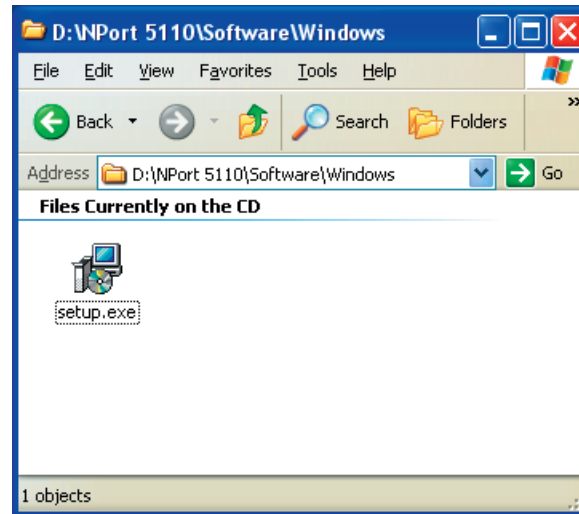
Connect the NPorts to the Ethernet e.g. via a switch.

(For initial setup test purposes you can also connect the NPort directly to your PC via a crossed network cable)

Installing software

Step 2

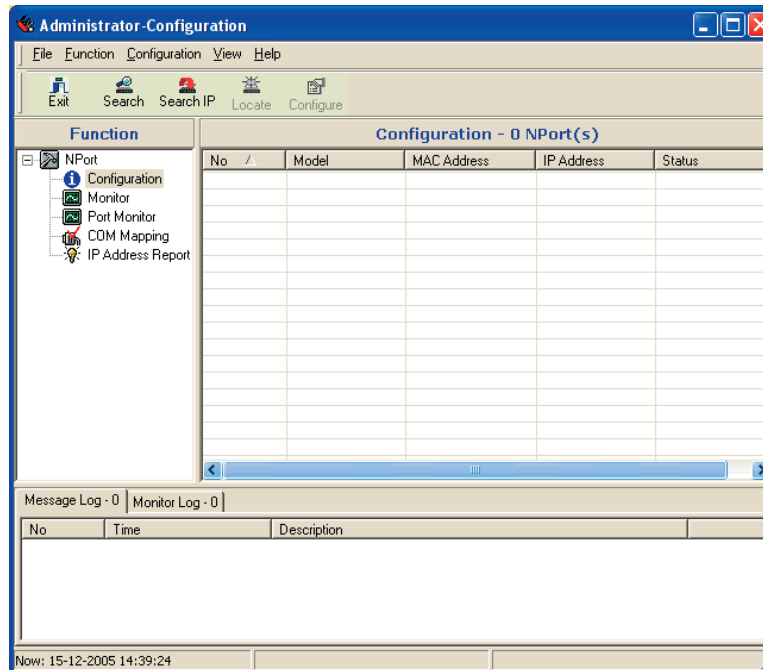
Install NPort Administration Suite on the PC and start Administrator:
Insert the CD and run \NPort5110\Software\Windows\setup.exe



Now launch the program.

Finding NPorts on network

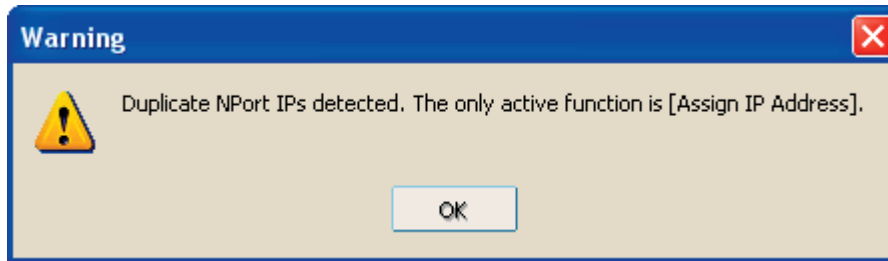
Step 3



Press **Search**

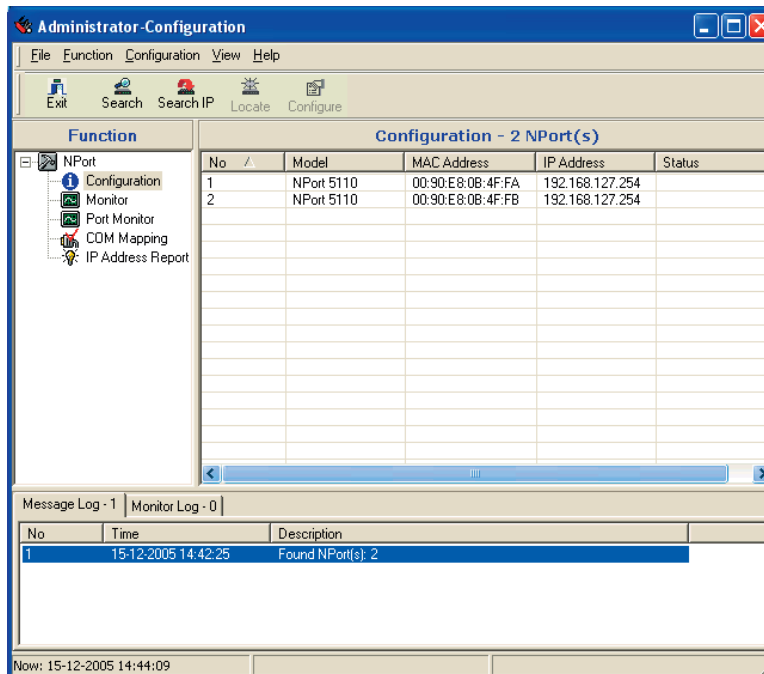
This will have the system search for any connected NPorts

If you have more than one connected to your system, you will get the following warning message:



Because the NPort default have the exact same IP address 192.168.127.154

Press **OK**



Now you can see that 2 NPort 5110s were found. Notice they have the same IP addresses. These must be changed, as they must be unique.

Step 4

Mark/select 'all' found units:

The screenshot shows the 'Administrator-Configuration' window. The title bar includes standard window controls. The menu bar contains 'File', 'Function', 'Configuration', 'View', and 'Help'. The toolbar has icons for 'Exit', 'Search', 'Search IP', 'Locate', and 'Configure'. The main area is split into two panes. The left pane, titled 'Function', shows a tree view with 'NPort' expanded, containing sub-items: 'Configuration', 'Monitor', 'Port Monitor', 'CDM Mapping', and 'IP Address Report'. The right pane, titled 'Configuration - 2 NPort(s)', contains a table with the following data:

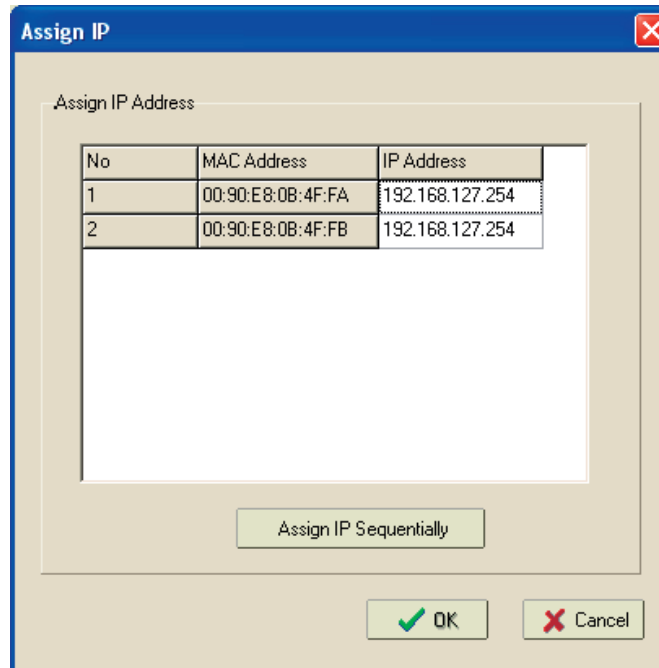
No	Model	MAC Address	IP Address	Status
1	NPort 5110	00:90:E8:0B:4F:FA	192.168.127.254	
2	NPort 5110	00:90:E8:0B:4F:FB	192.168.127.254	

At the bottom of the window, there is a 'Message Log' section with two tabs: 'Message Log - 1' and 'Monitor Log - 0'. The 'Message Log - 1' tab is active and shows a single entry:

No	Time	Description
1	15-12-2005 14:42:25	Found NPort(s): 2

The status bar at the very bottom of the window displays the current time: 'Now: 15-12-2005 14:45:24'.

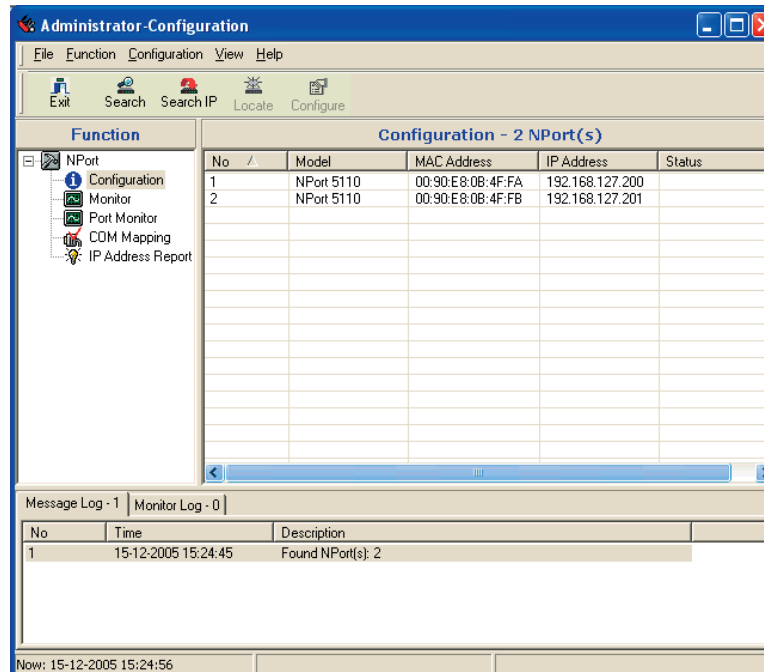
In the menu choose
Configuration → Assign IP Address
which will bring up this window



Assigning IP addresses

Step 5

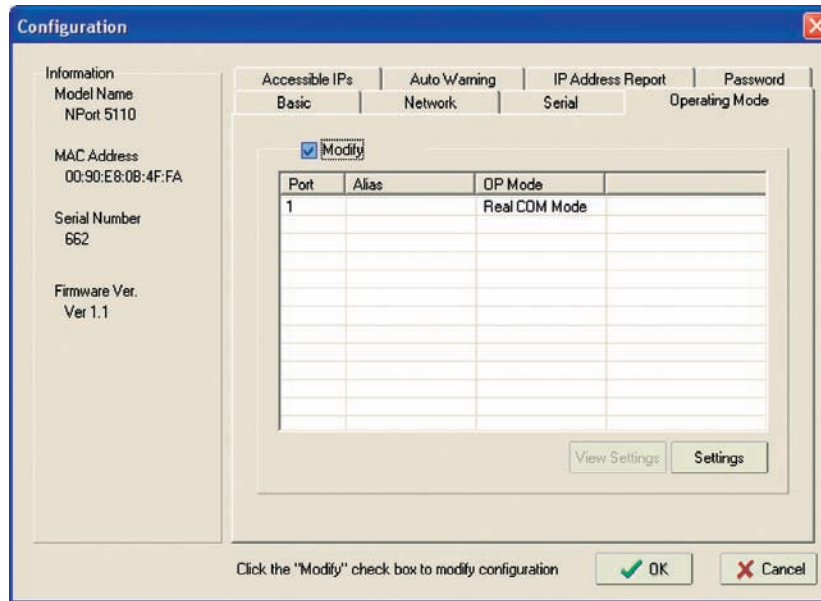
Now either 'Assign IP Sequentially' or set IP manually (contact your IT administrator to get IP addresses, it is recommended to use static IP addresses).



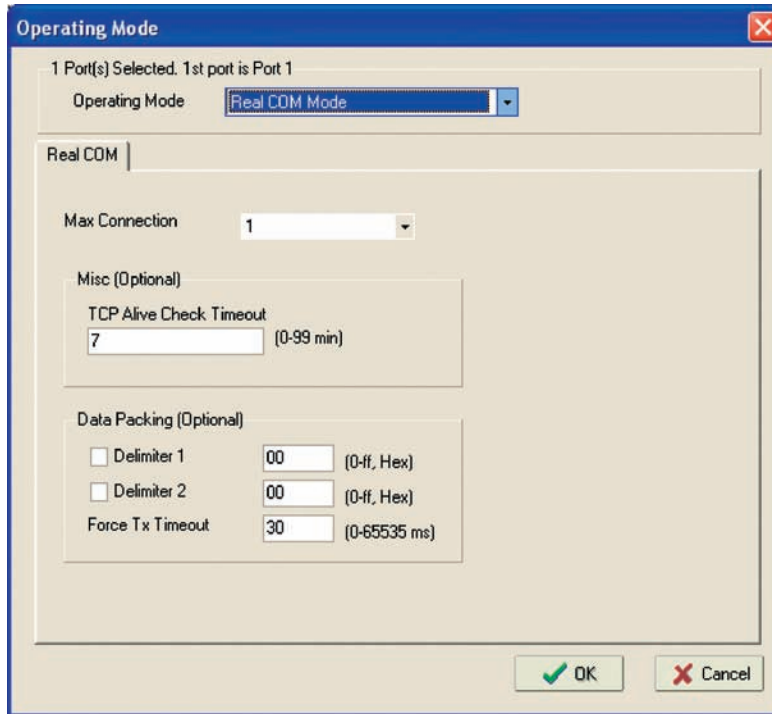
Change Operating mode

Step 6

In the menu choose
Configuration → Configure
which will bring up this window



Click the "Modify" check box and then click the button "Settings"



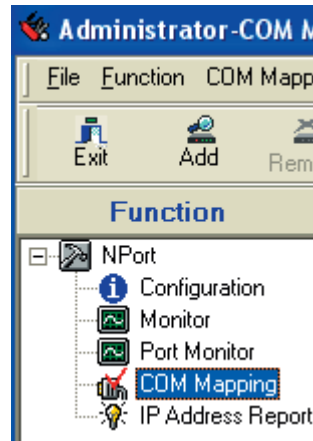
Now change "Force Tx Timeout" from 0 to 30 and then click "OK"

Mapping COM ports

Step 7

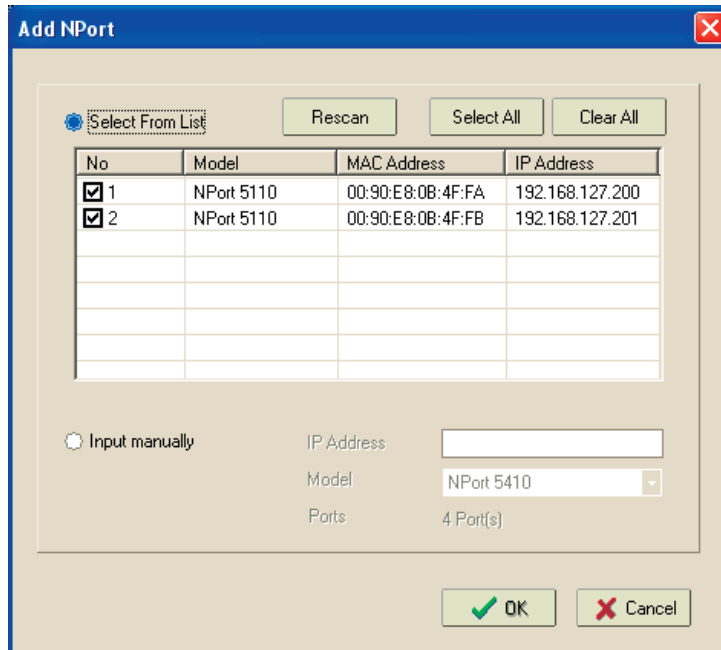
Now each NPort should be mapped to a COM port, in order for PC•PRO to find the thermostats.

Click COM Mapping in the Function window



and then click the button Add

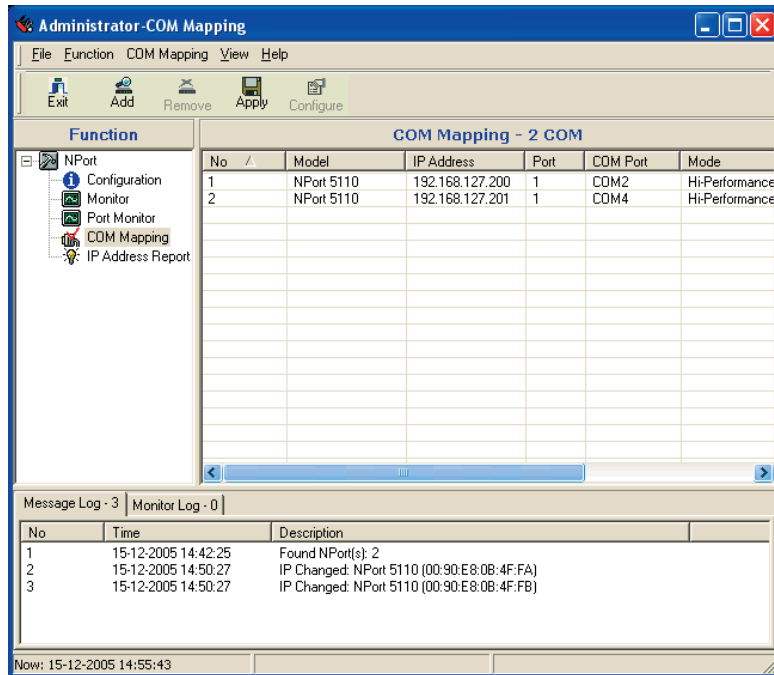




Your NPorts have now been added to above window.

Press **OK**

The NPorts have now been assigned COM2 and COM4

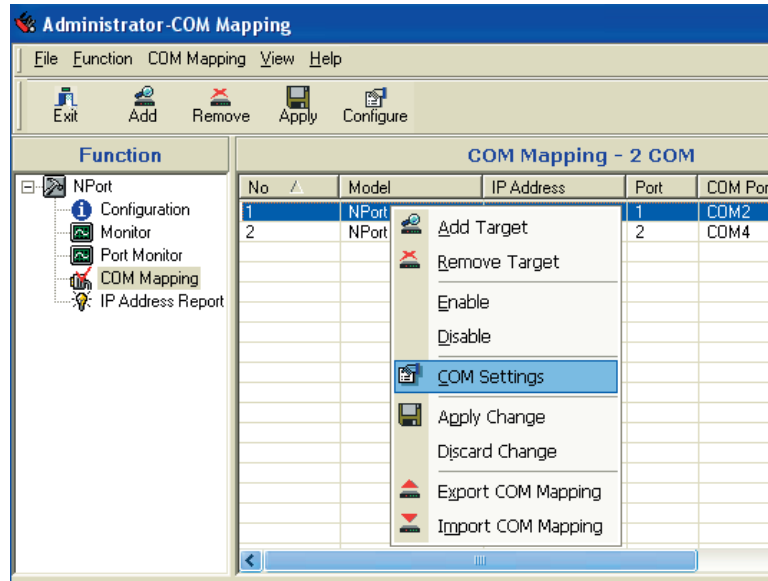


If you are not satisfied with the allocation of COM numbers, you can choose them yourself.

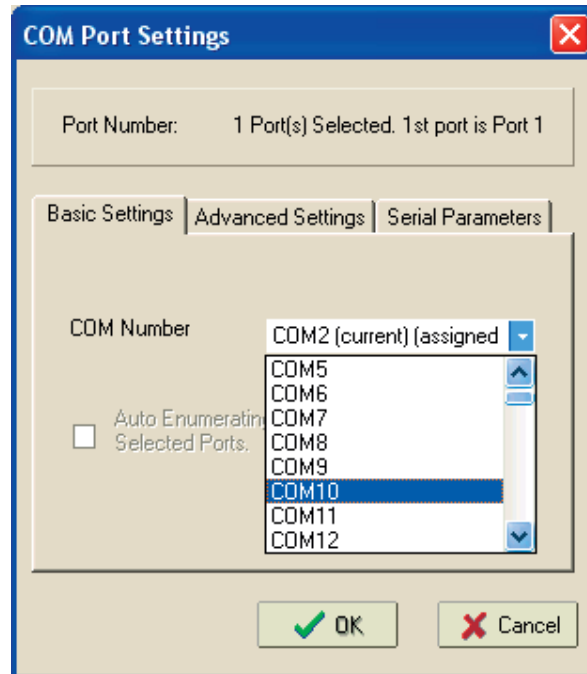
Re-assigning COM Ports

Step 8

Right click the NPort you wish to re-assign a COM Port, and choose COM Settings:



which brings up this window:



Then we have:

Administrator-COM Mapping

File Function COM Mapping View Help

Exit Add Remove Apply Configure

Function

- NPport
 - Configuration
 - Monitor
 - Port Monitor
 - COM Mapping**
 - IP Address Report

COM Mapping - 2 COM

No	Model	IP Address	Port	COM Port	Mode
1	NPport 5110	192.168.127.200	1	COM10	Hi-Performance
2	NPport 5110	192.168.127.201	1	COM11	Hi-Performance

Message Log - 3 | Monitor Log - 0

No	Time	Description
1	15-12-2005 14:42:25	Found NPport(s): 2
2	15-12-2005 14:50:27	IP Changed: NPport 5110 (00:90:E8:0B:4F:FA)
3	15-12-2005 14:50:27	IP Changed: NPport 5110 (00:90:E8:0B:4F:FB)

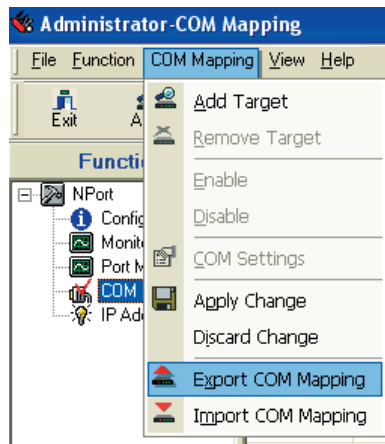
Now: 15-12-2005 15:01:09

Exporting COM settings

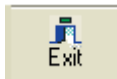
Step 9

You can export the COM Settings to a file if you need to access the system from more PCs in the same Ethernet network. From the menu choose:

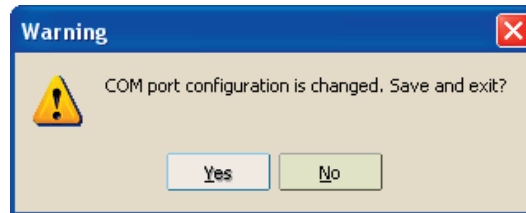
COM Mapping → Export COM Mapping



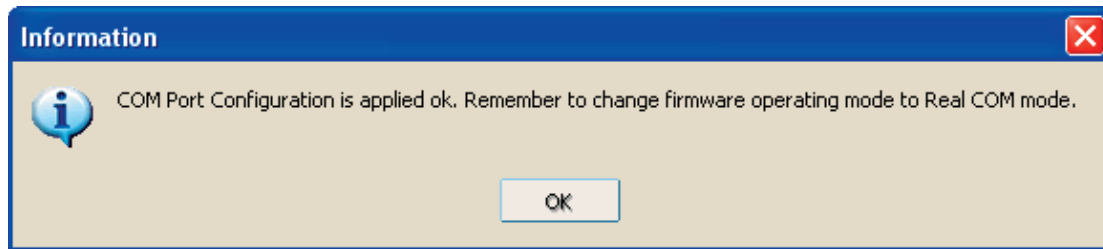
Now press



and click yes to save the COM Port configuration



Then the following message will 'pop up'



This is the default so 'OK'
This concludes the NPort setup.

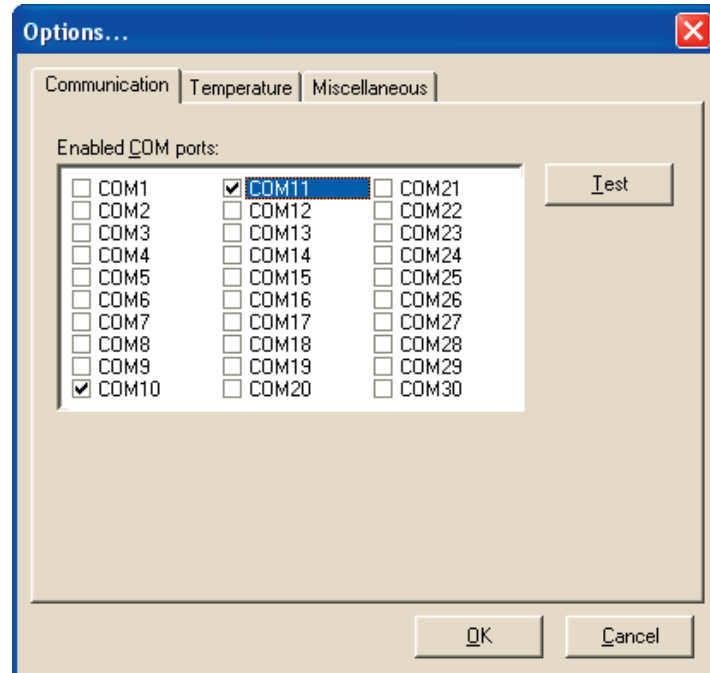
Configuring PC•PRO

Step 10

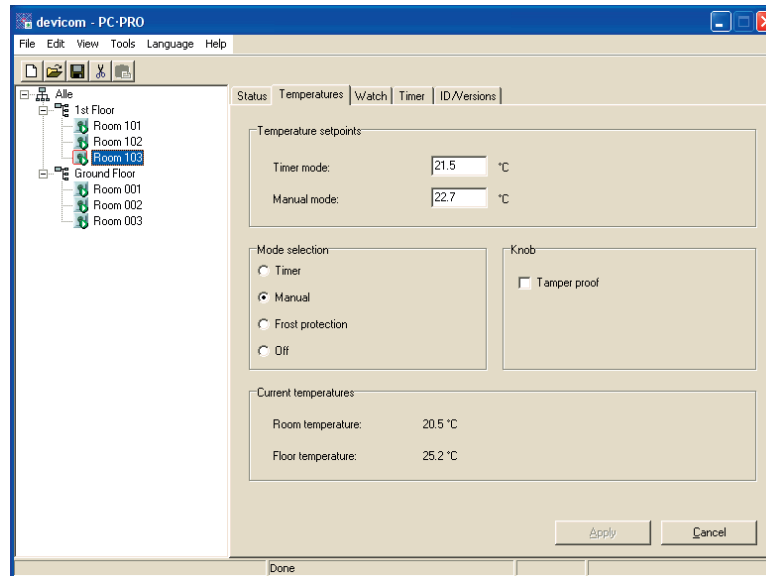
Now start PC•PRO

Under

Tools → Options → Communication
select the used COM ports:



This is what a configured system could look like:



Article: 08095350
Version: 01.01

www.devi.com