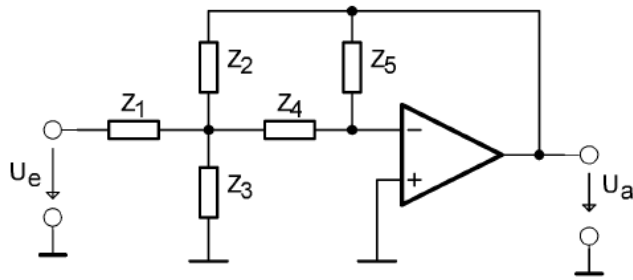


## MFB-Filterschaltung



### Eingangswiderstand $Z_i$

$$Z_i = \frac{Z_1}{1 - \frac{Z_{234}}{(Z_1 + Z_{234}) \cdot \left(1 + \frac{Z_5}{Z_4} \cdot \frac{Z_{134}}{Z_2 + Z_{134}}\right)}}$$

$$Z_{234} = \frac{1}{\frac{1}{Z_2} + \frac{1}{Z_3} + \frac{1}{Z_4}}$$

$$Z_{134} = \frac{1}{\frac{1}{Z_1} + \frac{1}{Z_3} + \frac{1}{Z_4}}$$