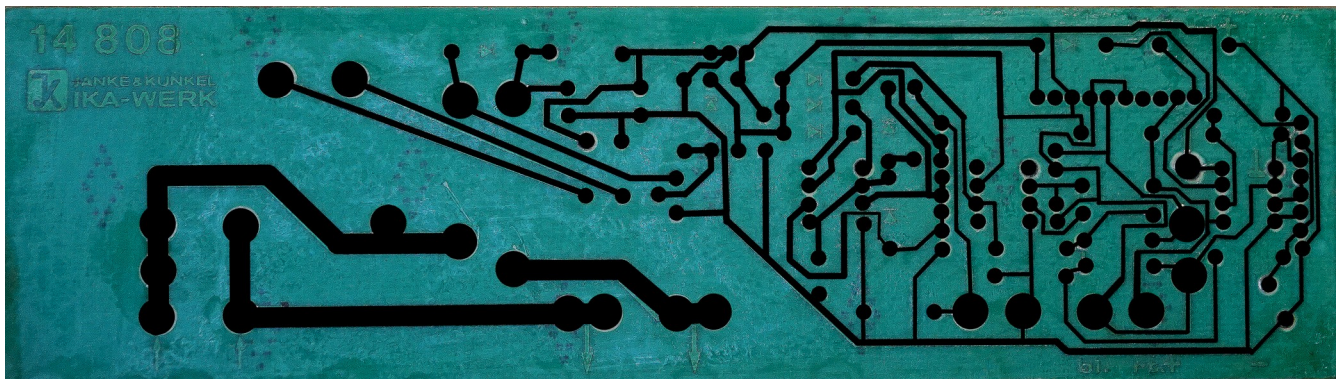
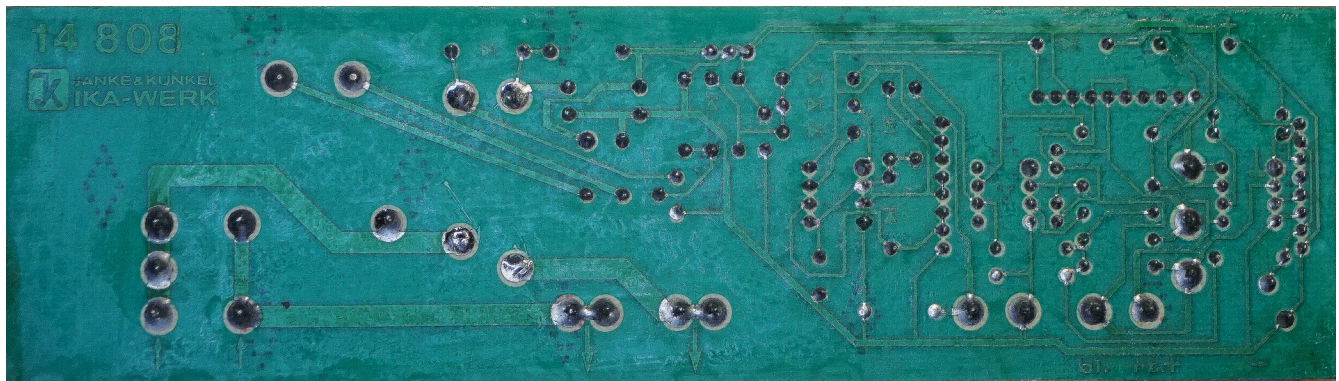
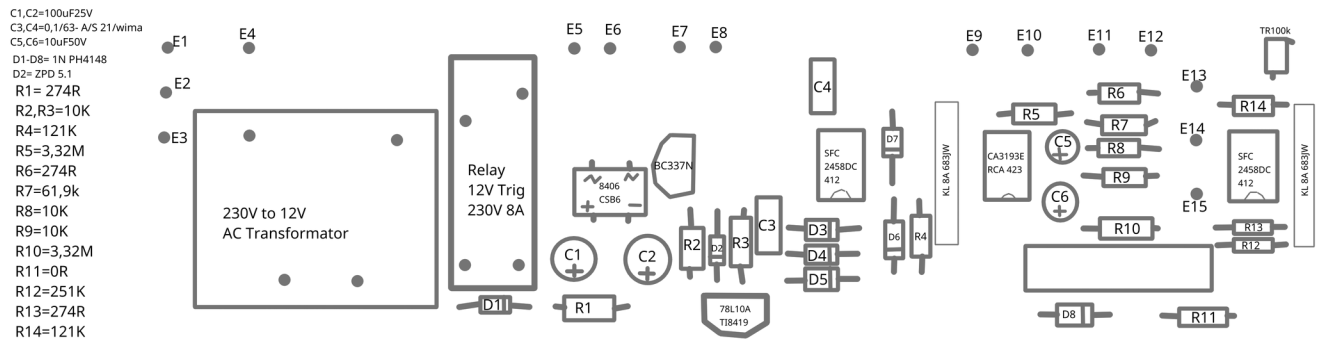
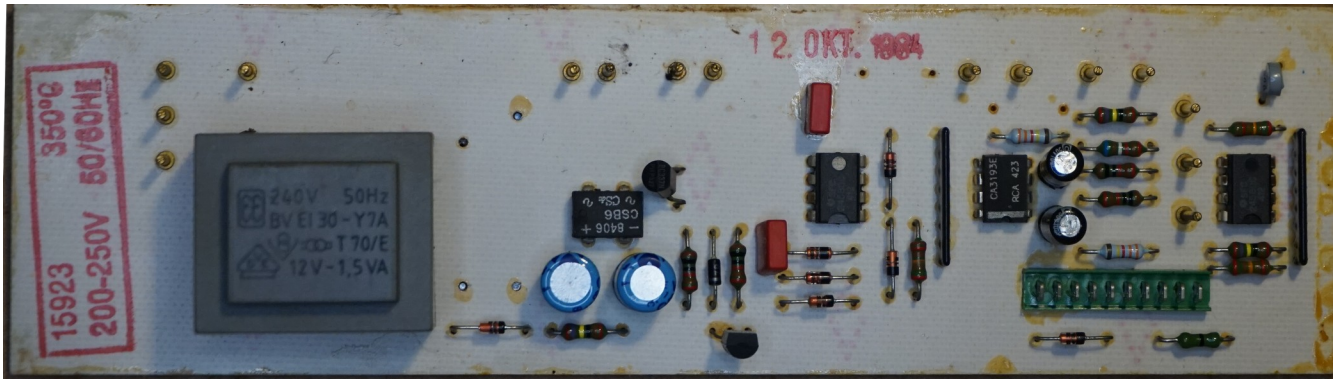
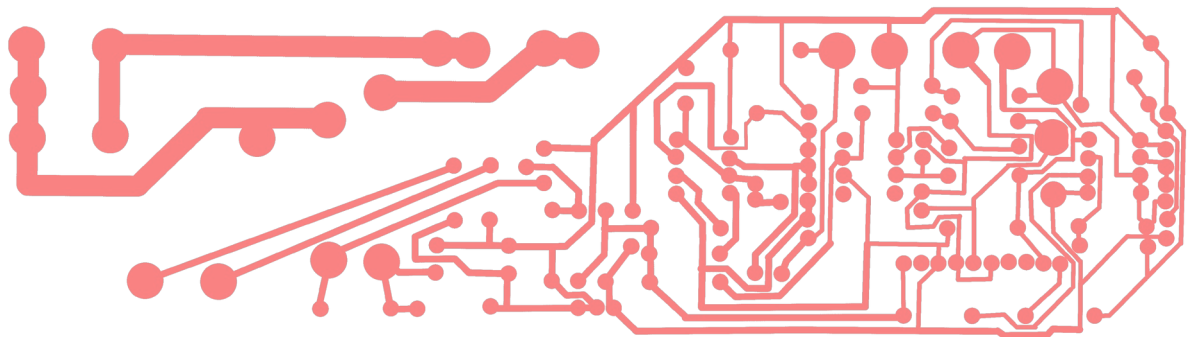
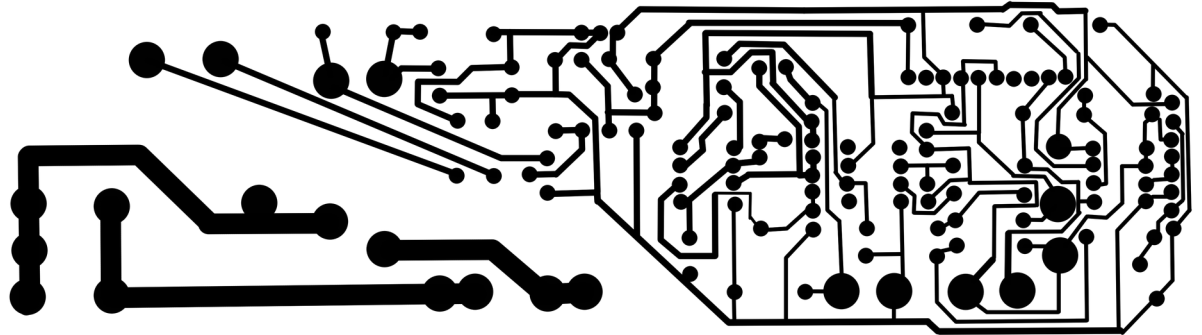
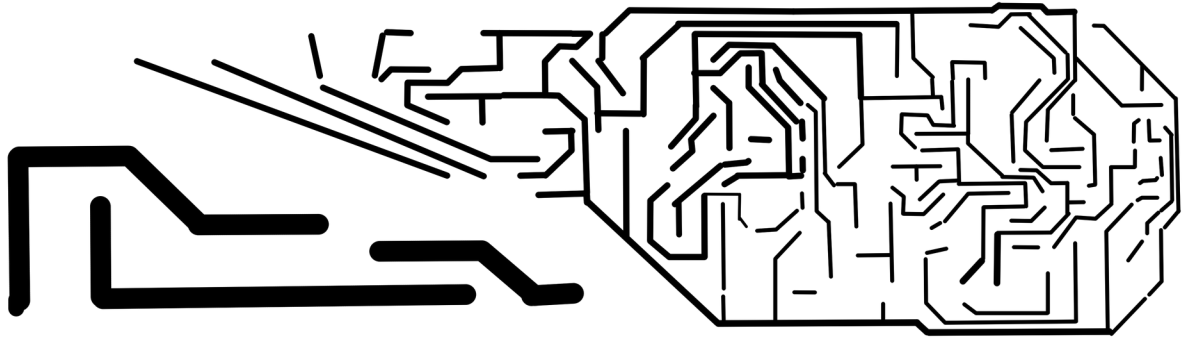
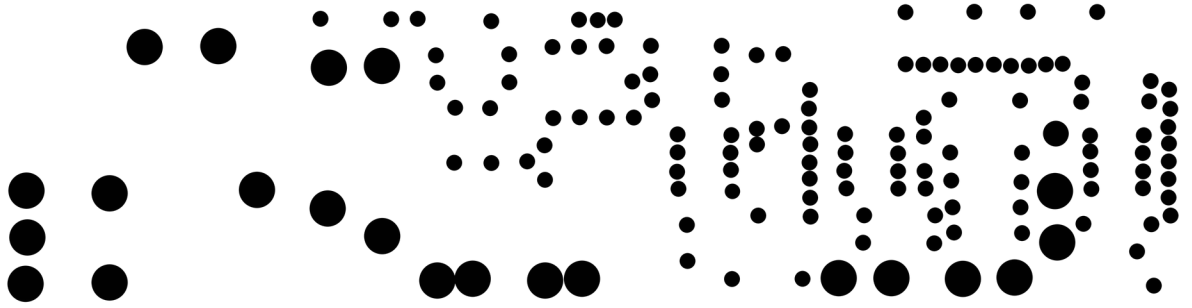


Janke und Kunkel IKAMAG RET-G (1984 model) Heatingcontrol PCB





- C1,C2=100uF25V
- C3,C4=0.1/63- A/S 21/wima
- C5,C6=10uF50V
- D1-D8= 1N PH4148
- D2= ZPD 5.1
- R1= 274R
- R2,R3=10K
- R4=121K
- R5=3,32M
- R6=274R
- R7=61,9k
- R8=10K
- R9=10K
- R10=3,32M
- R11=0R
- R12=251K
- R13=274R
- R14=121K

