

X-MLCC-05058


ML Starter Kit Carrier Card

REV B03

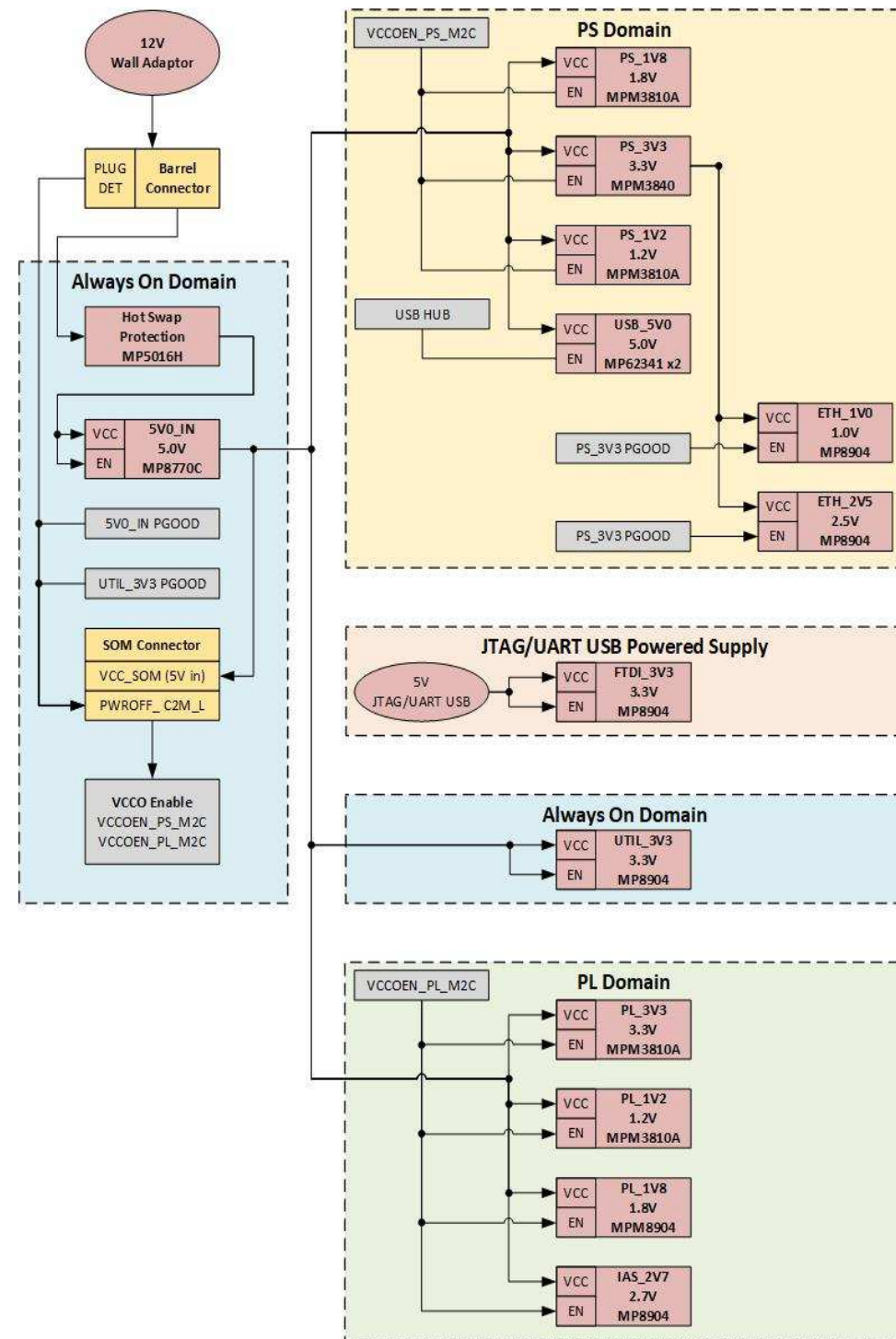
NOTICE: These schematics are made available for users who are working with this specific Xilinx board and should not be considered an optimal board design reference. This board was designed for evaluation purposes with components that are potentially more complex and costly than would be used in an end customer system. Users are encouraged to leverage the Xilinx design guidelines as the optimal starting point for new board designs.

© Copyright 2020 Xilinx, Inc. Xilinx, the Xilinx logo, Artix, ISE, Kintex, Spartan, Virtex, Zynq, and other designated brands included herein are trademarks of Xilinx in the United States and other countries. [If applicable, insert relevant third-party sentence.] All other trademarks are the property of their respective owners.

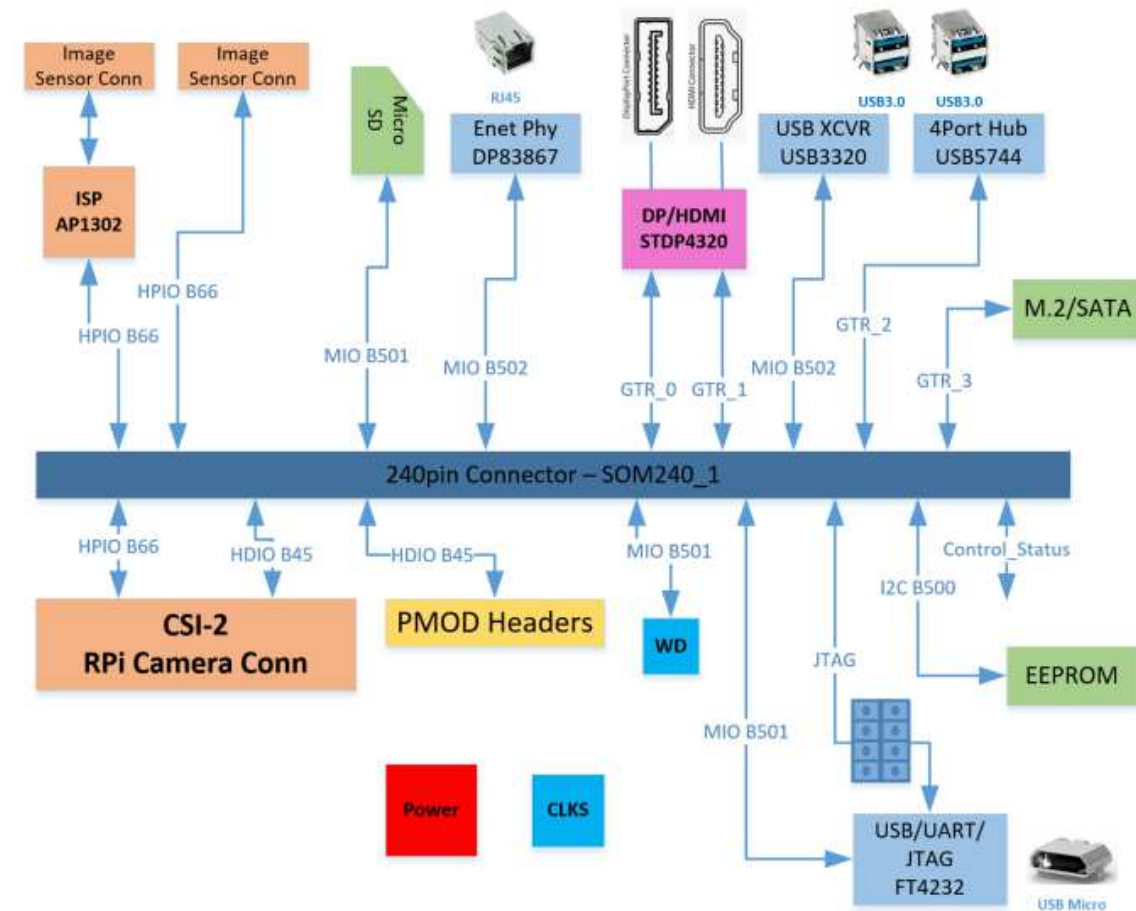
DISCLAIMER The information disclosed to you hereunder (the "Materials") is provided solely for the selection and use of Xilinx products. To the maximum extent permitted by applicable law: (1) Materials are made available "AS IS" and with all faults, Xilinx hereby **DISCLAIMS ALL WARRANTIES AND CONDITIONS, EXPRESS, IMPLIED, OR STATUTORY, INCLUDING BUT NOT LIMITED TO WARRANTIES OF MERCHANTABILITY, NON-INFRINGEMENT, OR FITNESS FOR ANY PARTICULAR PURPOSE;** and (2) Xilinx shall not be liable (whether in contract or tort, including negligence, or under any other theory of liability) for any loss or damage of any kind or nature related to, arising under, or in connection with, the Materials (including your use of the Materials), including for any direct, indirect, special, incidental, or consequential loss or damage (including loss of data, profits, goodwill, or any type of loss or damage suffered as a result of any action brought by a third party) even if such damage or loss was reasonably foreseeable or Xilinx had been advised of the possibility of the same. Xilinx assumes no obligation to correct any errors contained in the Materials or to notify you of updates to the Materials or to product specifications. You may not reproduce, modify, distribute, or publicly display the Materials without prior written consent. Certain products are subject to the terms and conditions of Xilinx's limited warranty, please refer to Xilinx's Terms of Sale which can be viewed at <http://www.xilinx.com/legal.htm#tos>; IP cores may be subject to warranty and support terms contained in a license issued to you by Xilinx. Xilinx products are not designed or intended to be fail-safe or for use in any application requiring fail-safe performance; you assume sole risk and liability for use of Xilinx products in such critical applications, please refer to Xilinx's Terms of Sale which can be viewed at <http://www.xilinx.com/legal.htm#tos>.

 2100 Logic Drive San Jose, CA 95124		SKIT
Title: ML Starter Kit Carrier Card 01 - Title Page		
Size B	Date Modified: Friday, March 26, 2021	Document Number: 038-05058-01
Engineer: RH		Rev B03
Sheet 1 of 18		

POWER BLOCK DIAGRAM



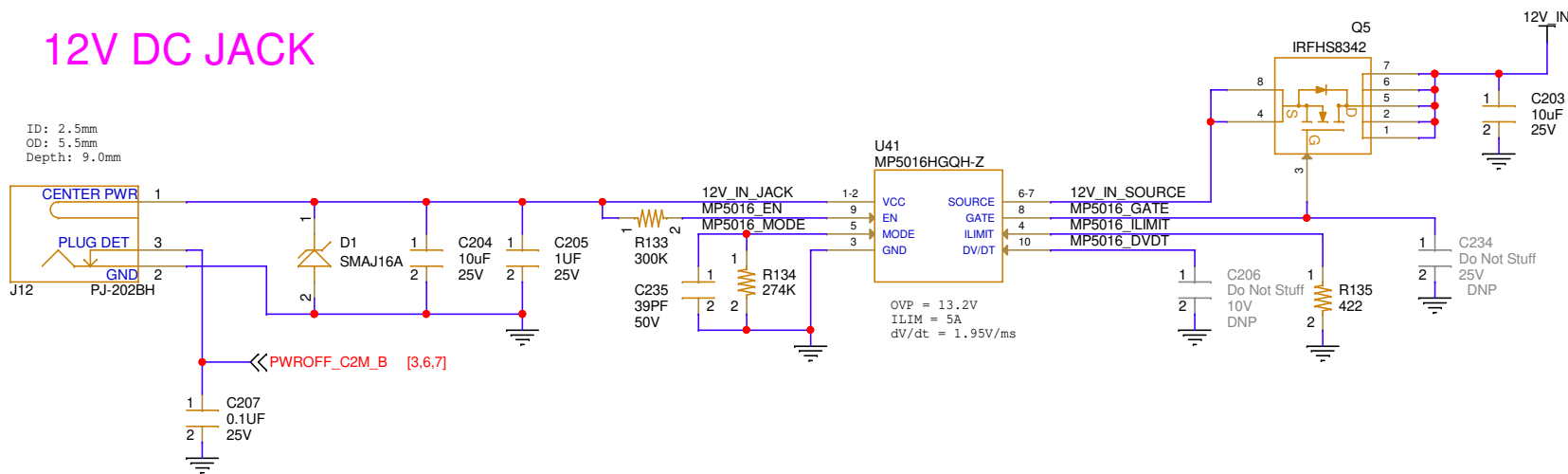
PERIPHERAL BLOCK DIAGRAM



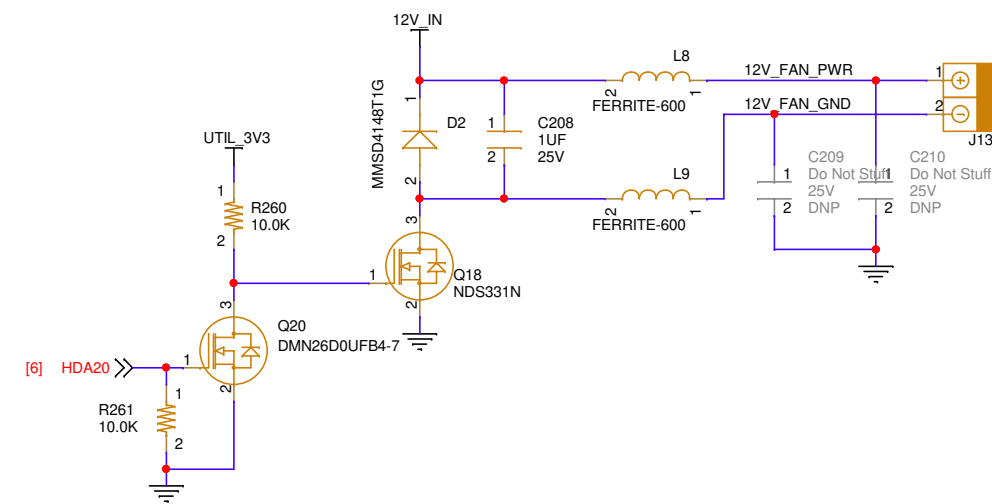
		2100 Logic Drive San Jose, CA 95124		SKIT	
Title: ML Starter Kit Carrier Card 02 - Block Diagram					
Size B	Date Modified: Friday, March 26, 2021	Document Number: 038-05058-01	Rev B03		
Engineer: RH			Sheet 2 of 18		

12V DC JACK

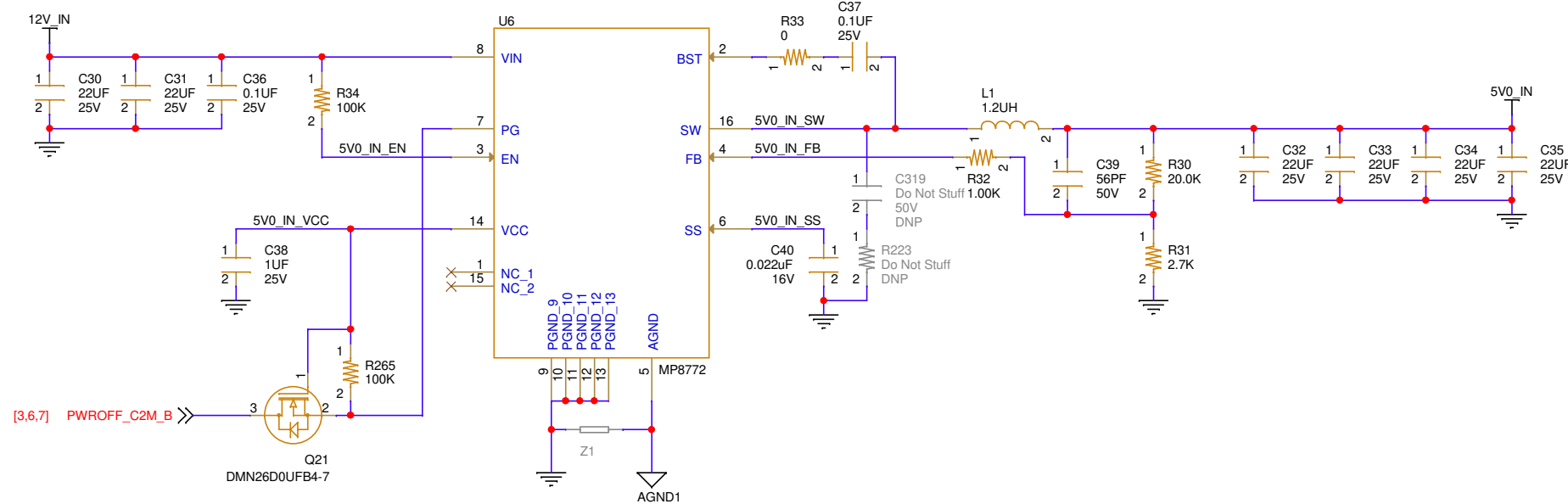
ID: 2.5mm
OD: 5.5mm
Depth: 9.0mm



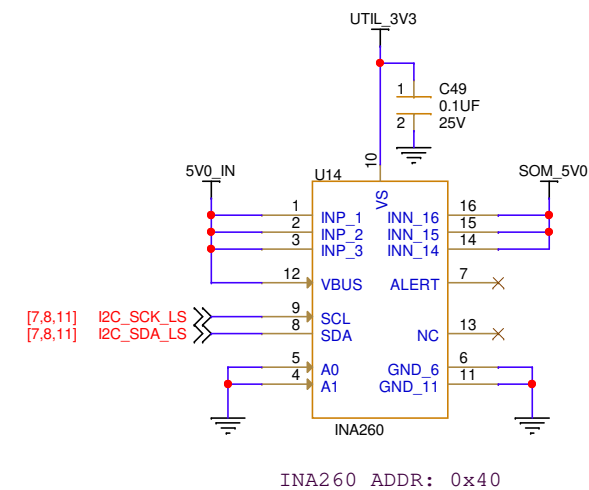
12V FAN HEADER



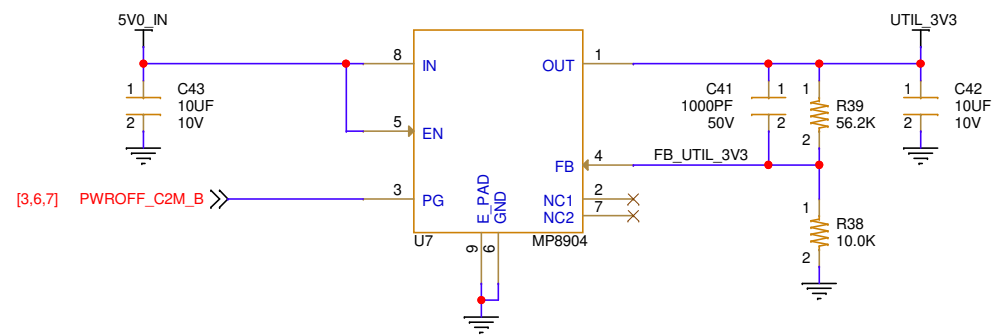
5V0_IN ALWAYS ON REGULATOR



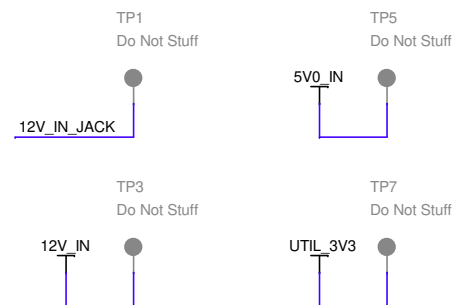
SOM_5V0 CURRENT MONITOR



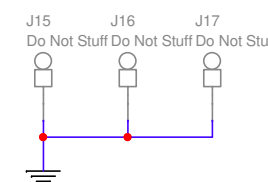
UTIL_3V3 ALWAYS ON REGULATOR



POWER TEST POINTS

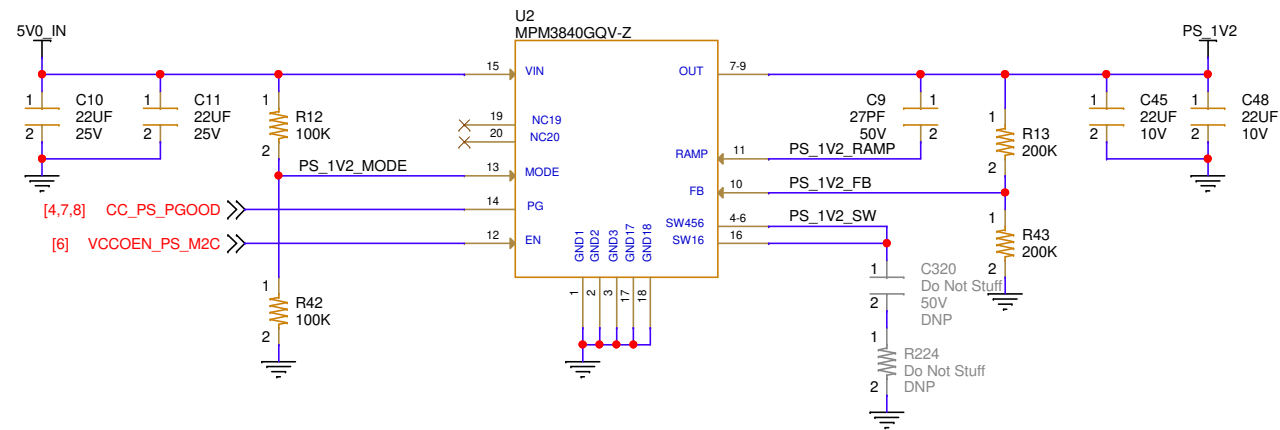


GROUND LOOPS

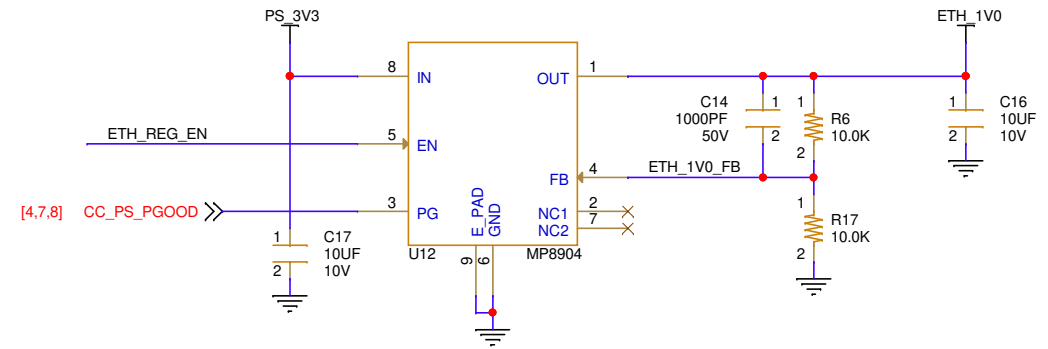


		SKIT	
2100 Logic Drive San Jose, CA 95124			
Title:		ML Starter Kit Carrier Card 03 - Always On Pwr, Fan Header	
Size B	Date Modified: Friday, March 26, 2021	Document Number: 038-05058-01	Rev B03
Engineer: RH		Sheet 3 of 18	

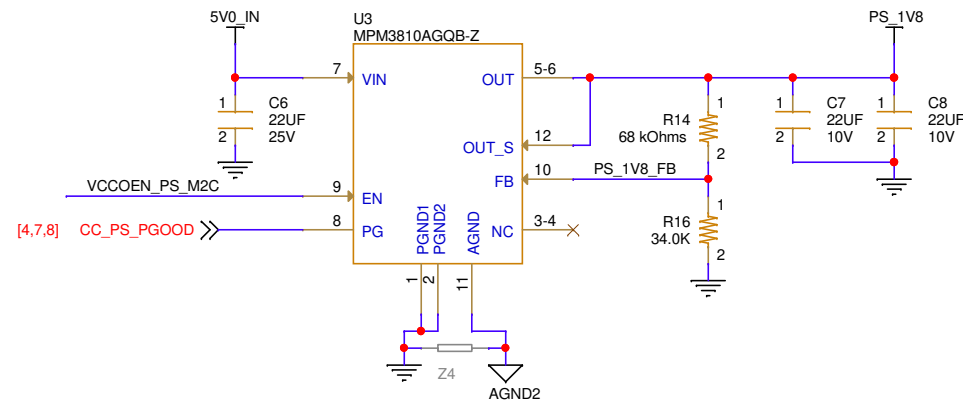
PS_1V2 REGULATOR



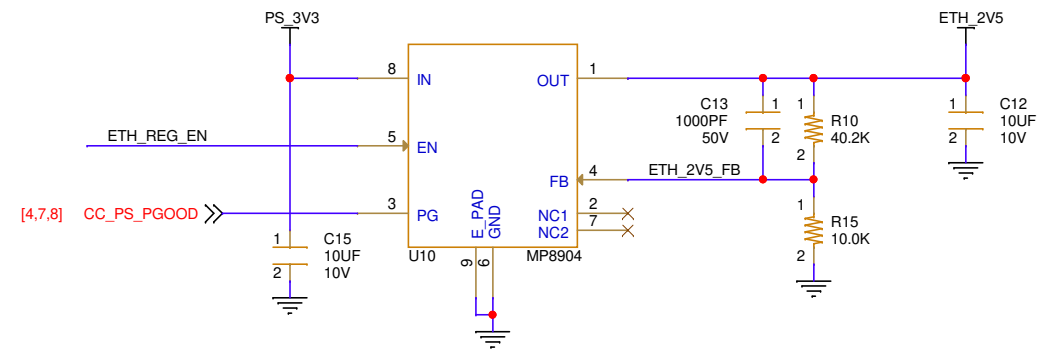
ETH_1V0 REGULATOR



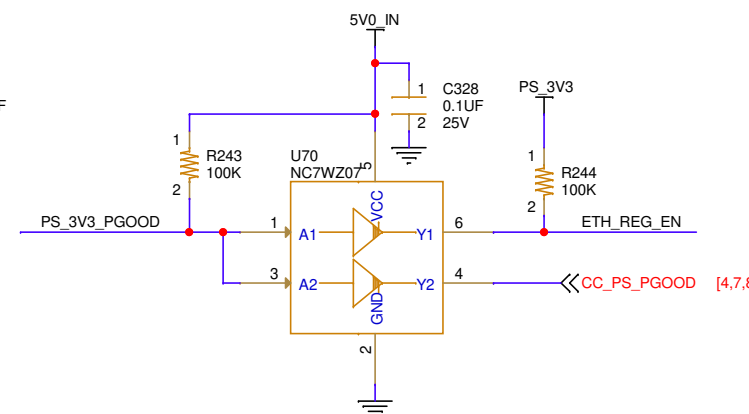
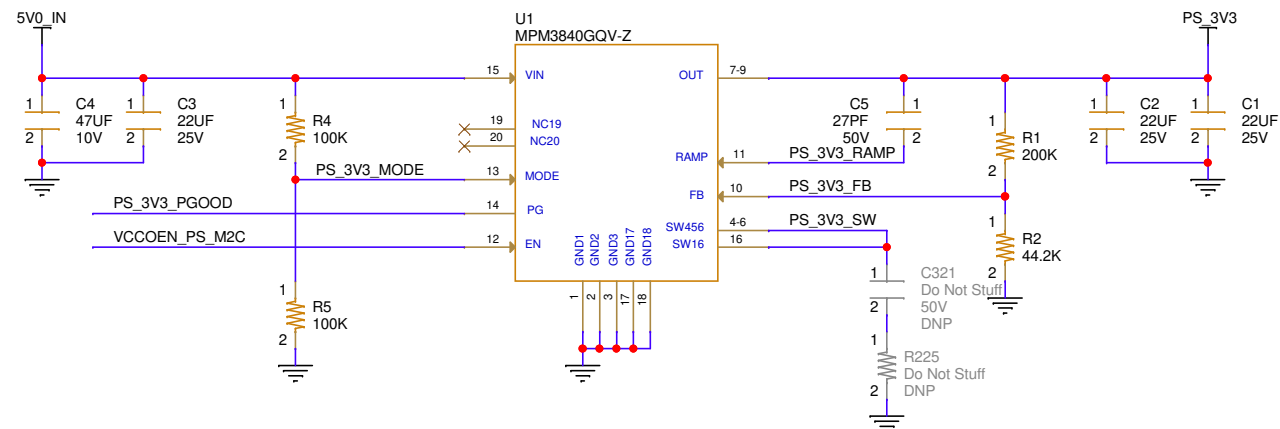
PS_1V8 REGULATOR



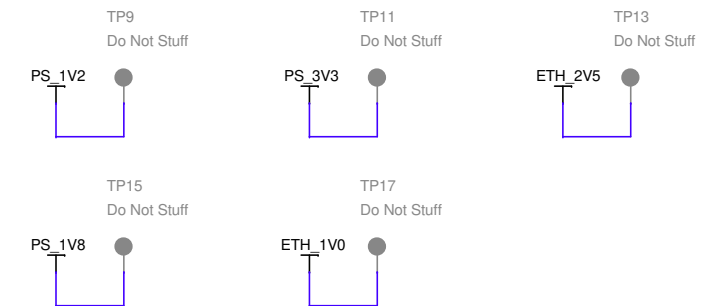
ETH_2V5 REGULATOR



PS_3V3 REGULATOR

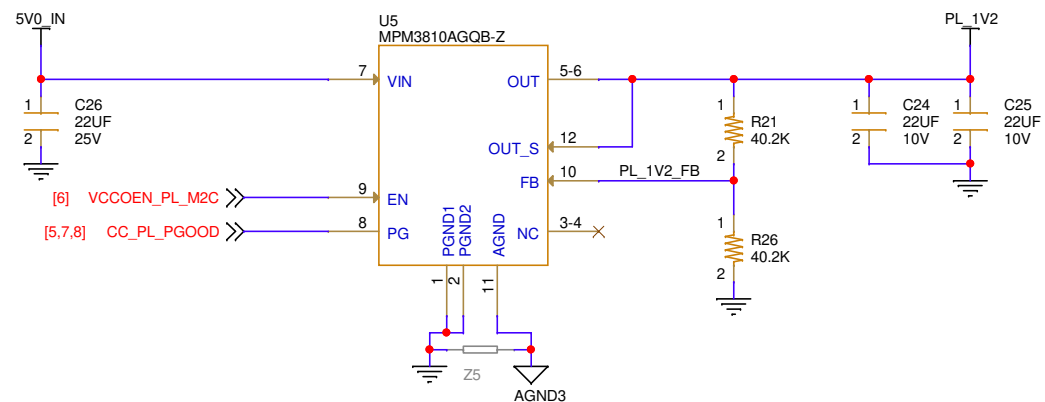


POWER TEST POINTS

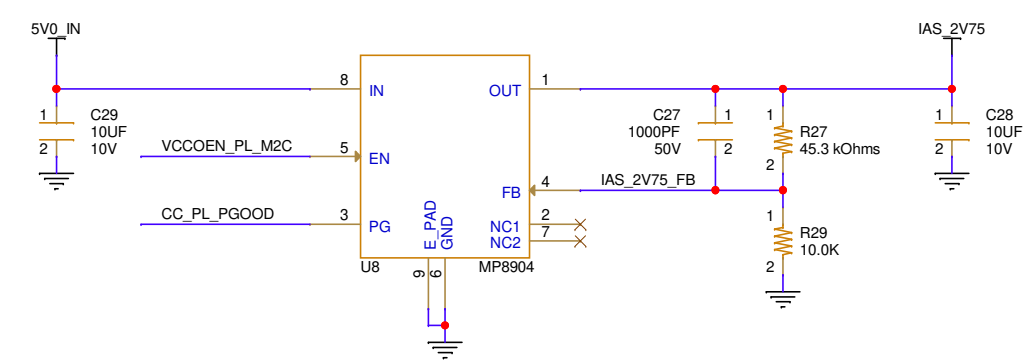


 2100 Logic Drive San Jose, CA 95124		SKIT
Title: ML Starter Kit Carrier Card 04 - PS Power		
Size: B	Date Modified: Friday, March 26, 2021	Document Number: 038-05058-01
Engineer: RH	Sheet 4 of 18	Rev: B03

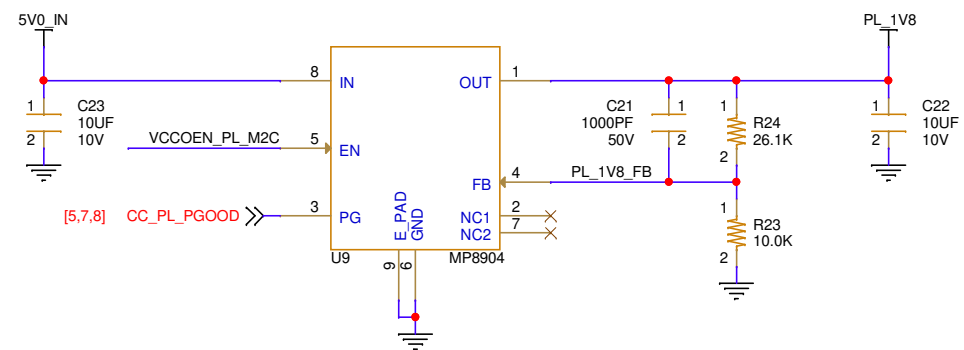
PL_1V2 REGULATOR



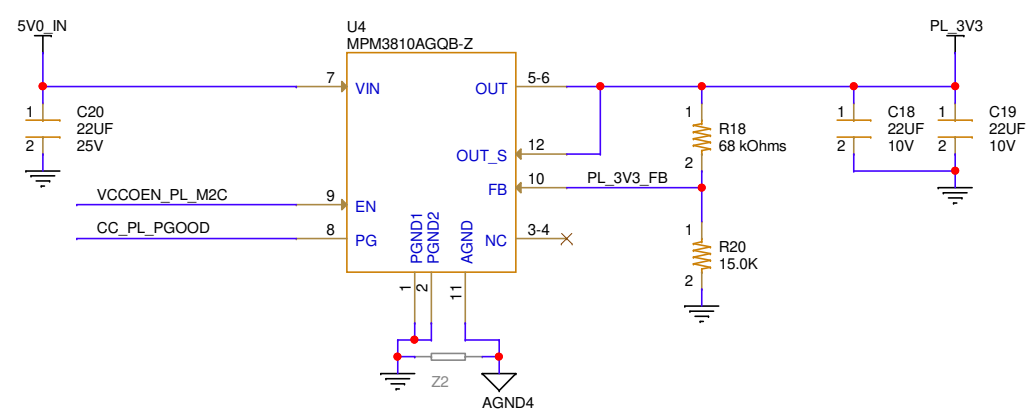
IAS_2V75 REGULATOR



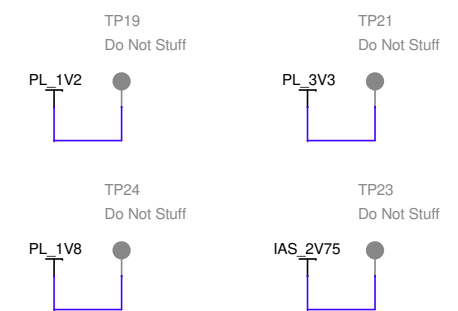
PL_1V8 REGULATOR



PL_3V3 REGULATOR

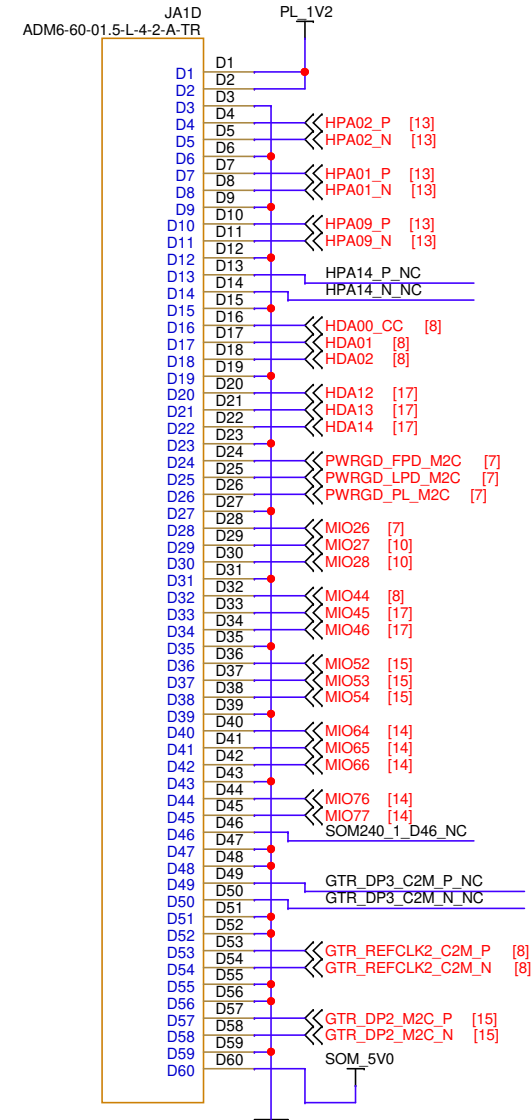
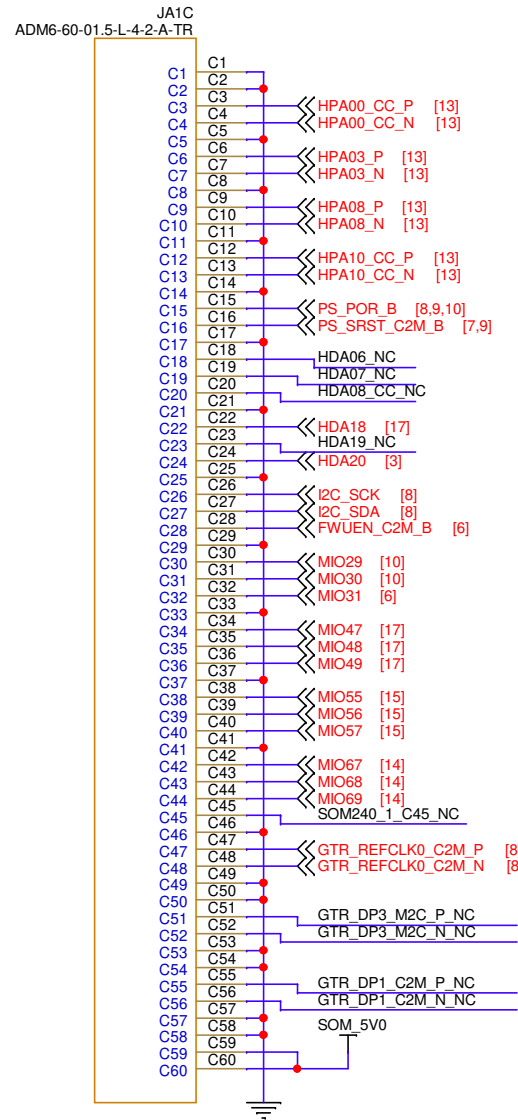
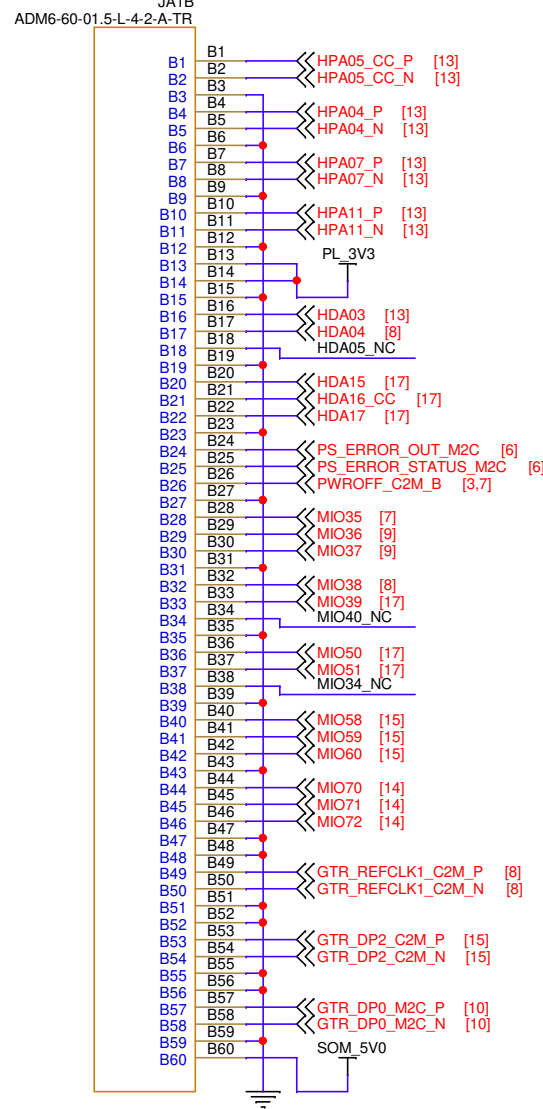
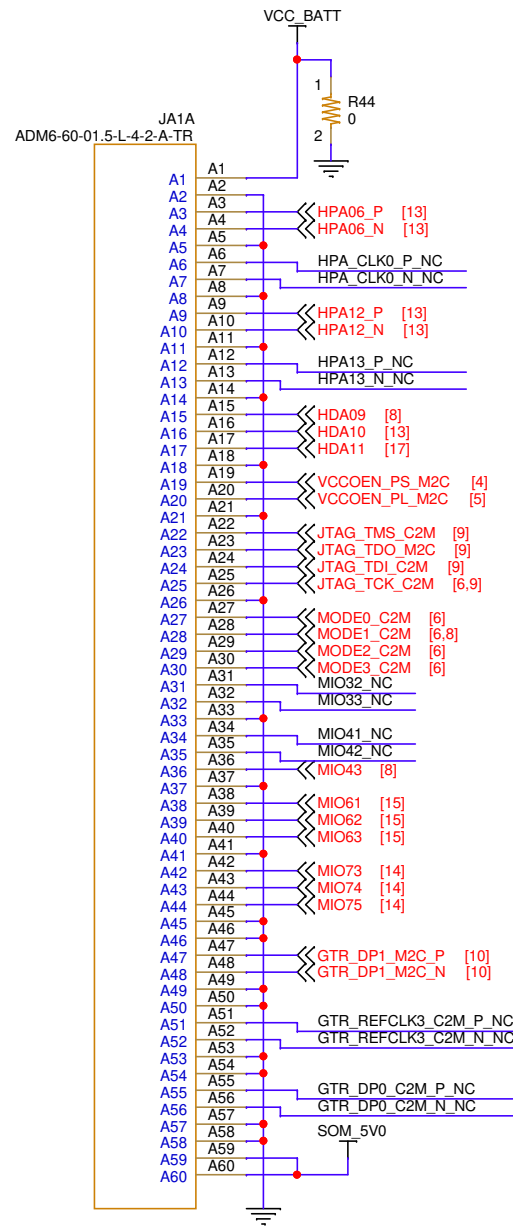


POWER TEST POINTS

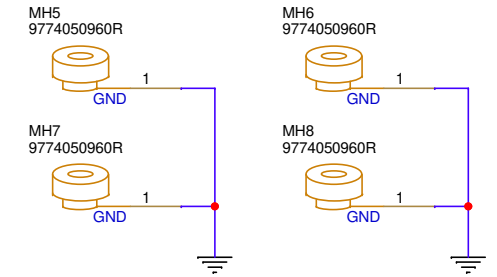


 2100 Logic Drive San Jose, CA 95124		SKIT
Title: ML Starter Kit Carrier Card 05 - PL Power		
Size B	Date Modified: Friday, March 26, 2021	Document Number: 038-05058-01
Engineer: RH	Rev B03	Sheet 5 of 18

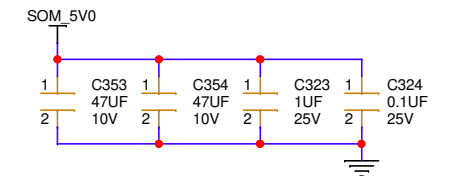
SOM240_1



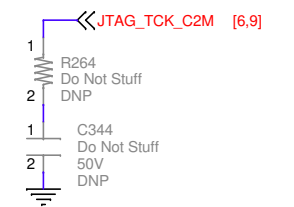
SOM STANDOFFS



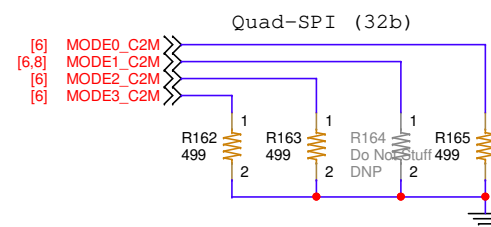
SOM_5V0 Connector Decoupling



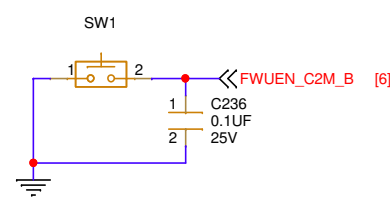
TCK TERM



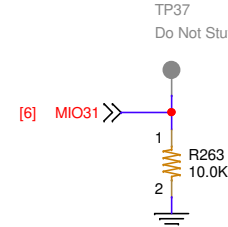
MODE PINS



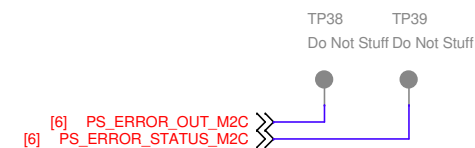
FWUEN BUTTON



SHUTDOWN

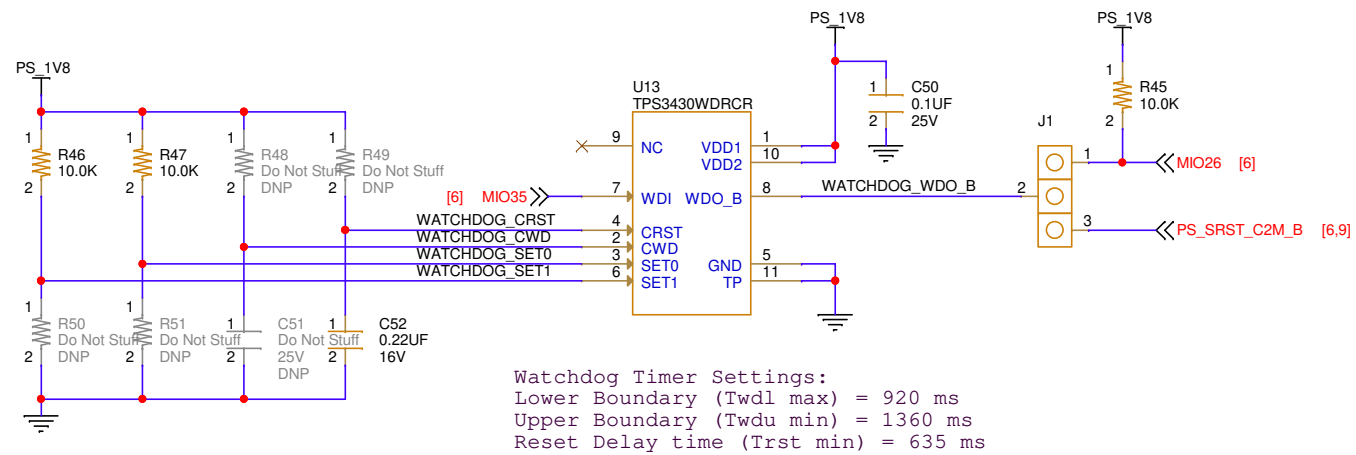


PS_ERROR_OUT/STATUS TEST POINTS

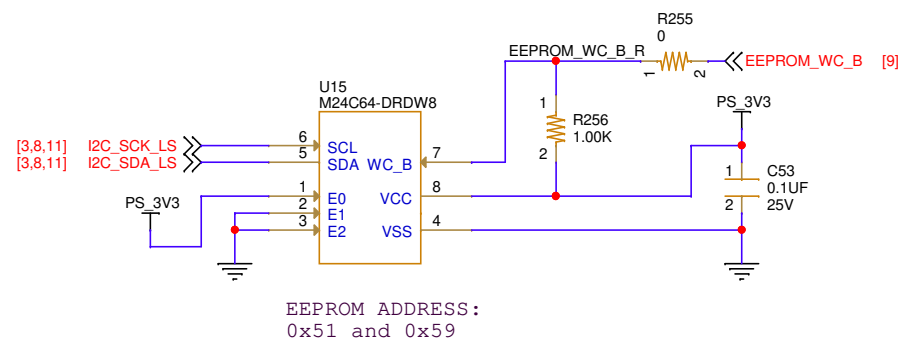


 2100 Logic Drive San Jose, CA 95124		SKIT	
Title: ML Starter Kit Carrier Card 06 - SOM240_1 Connector			
Size B	Date Modified: Friday, March 26, 2021	Document Number: 038-05058-01	Rev B03
Engineer: RH		Sheet 6 of 18	

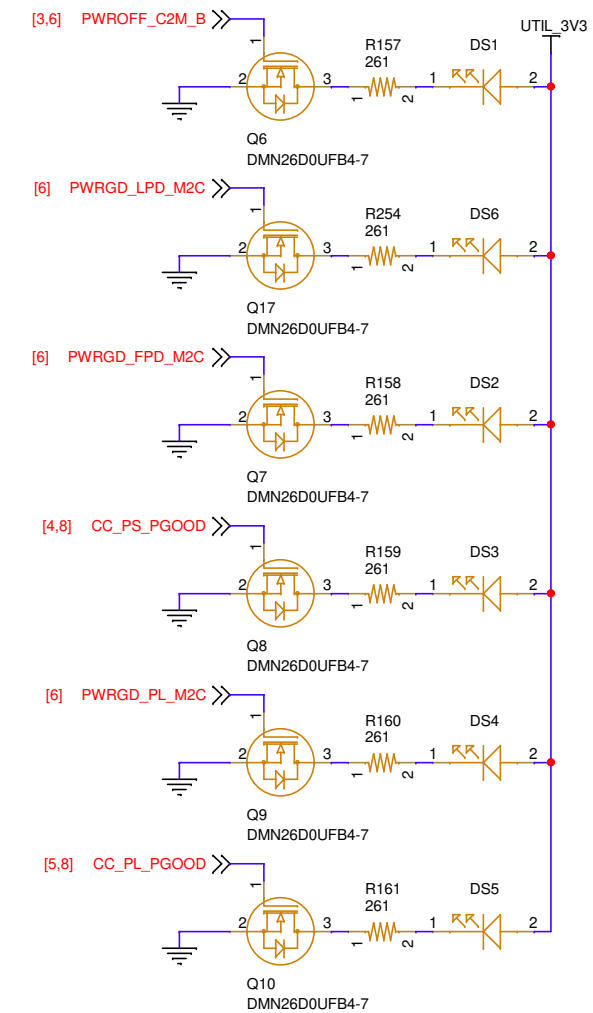
WATCHDOG TIMER



EEPROM

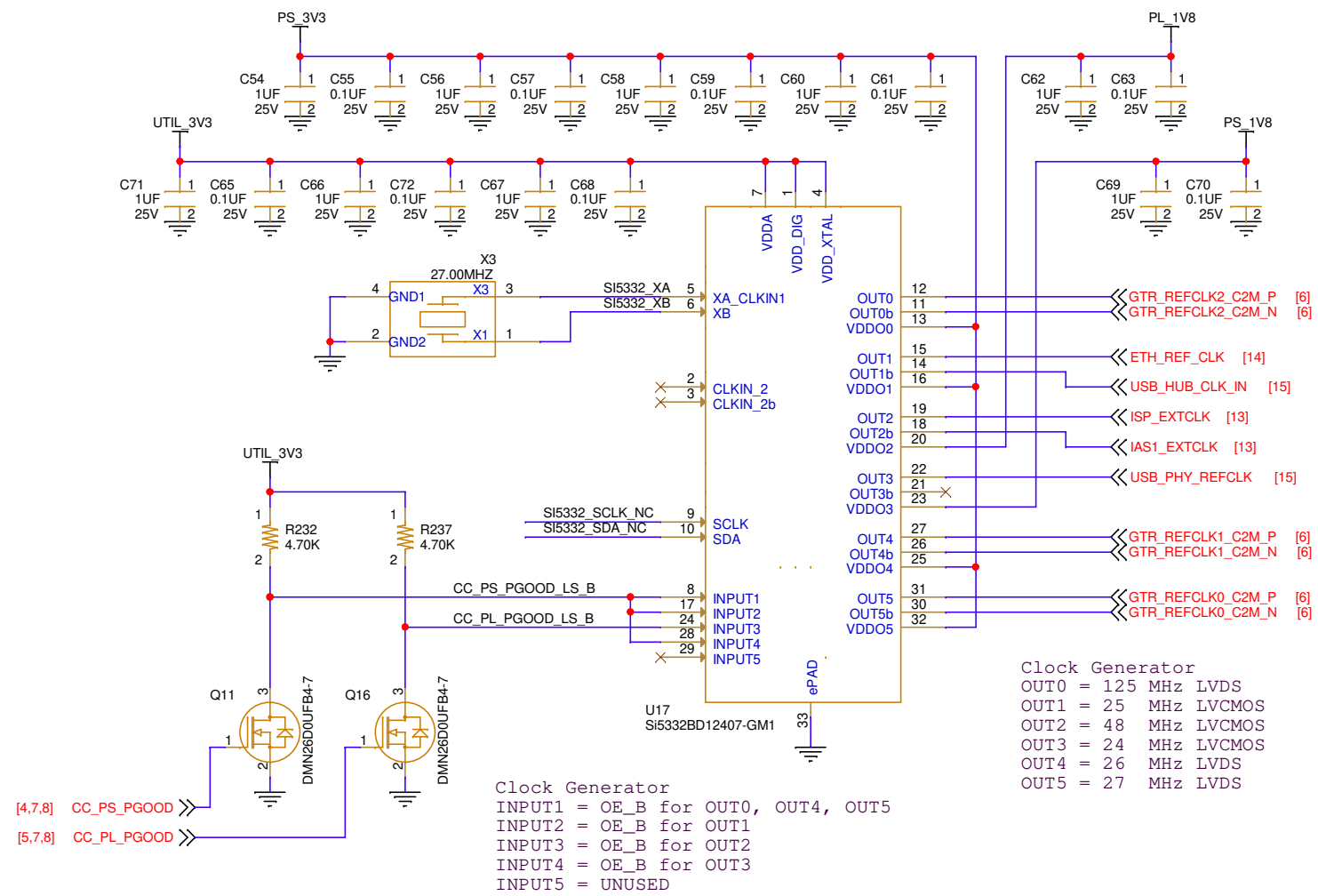


POWER STATUS LEDs

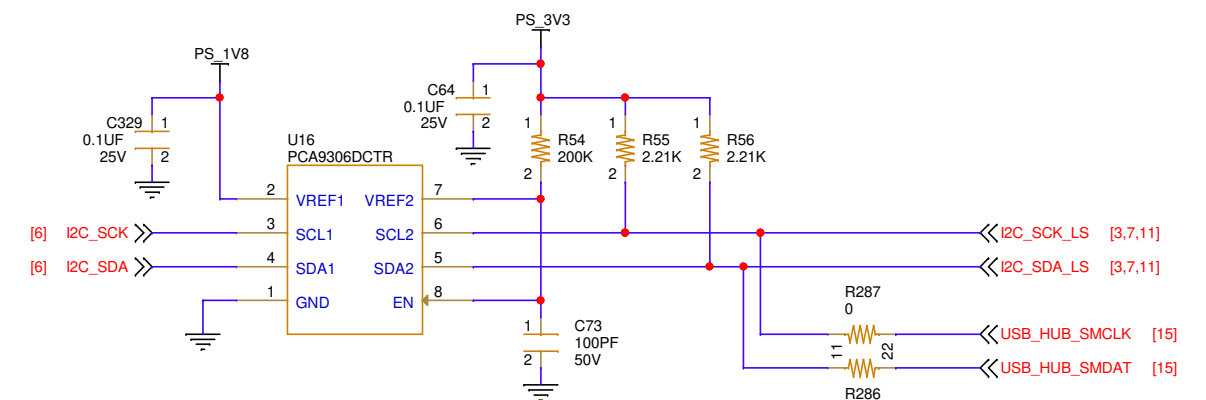


		SKIT	
2100 Logic Drive San Jose, CA 95124			
Title: ML Starter Kit Carrier Card 07 - EEPROM, WD, LEDs			
Size B	Date Modified: Friday, March 26, 2021	Document Number: 038-05058-01	Rev B03
Engineer: RH		Sheet 7 of 18	

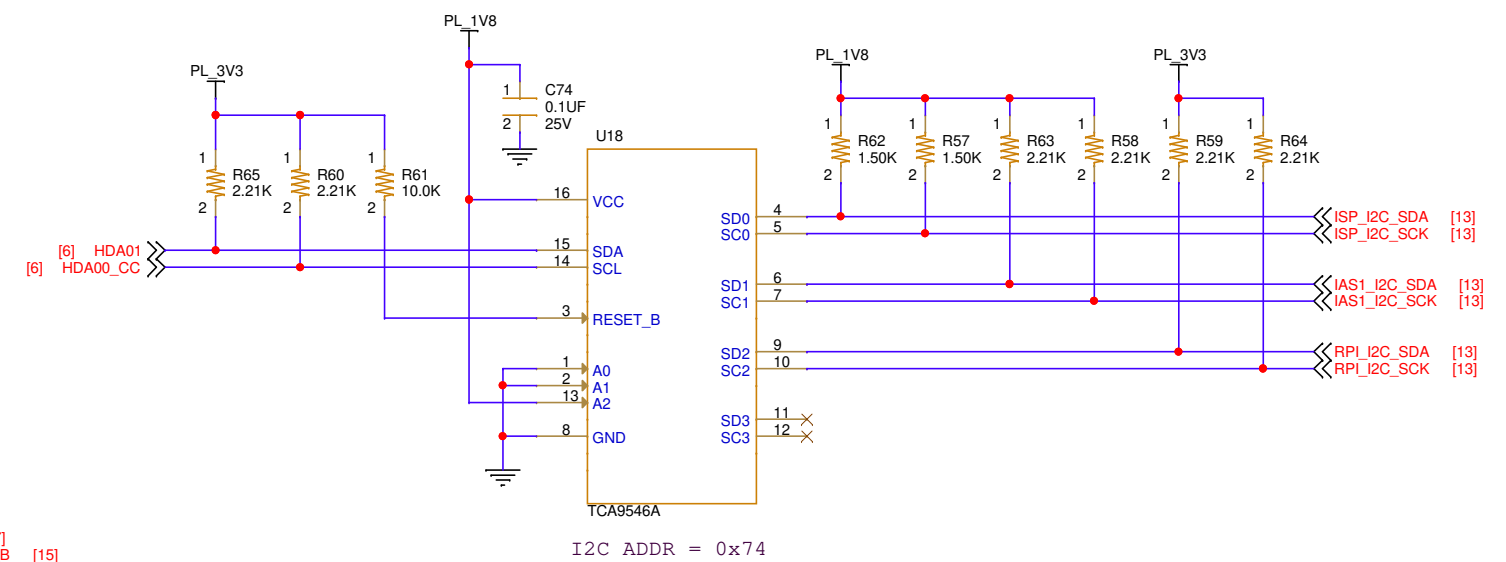
CLOCK GENERATOR



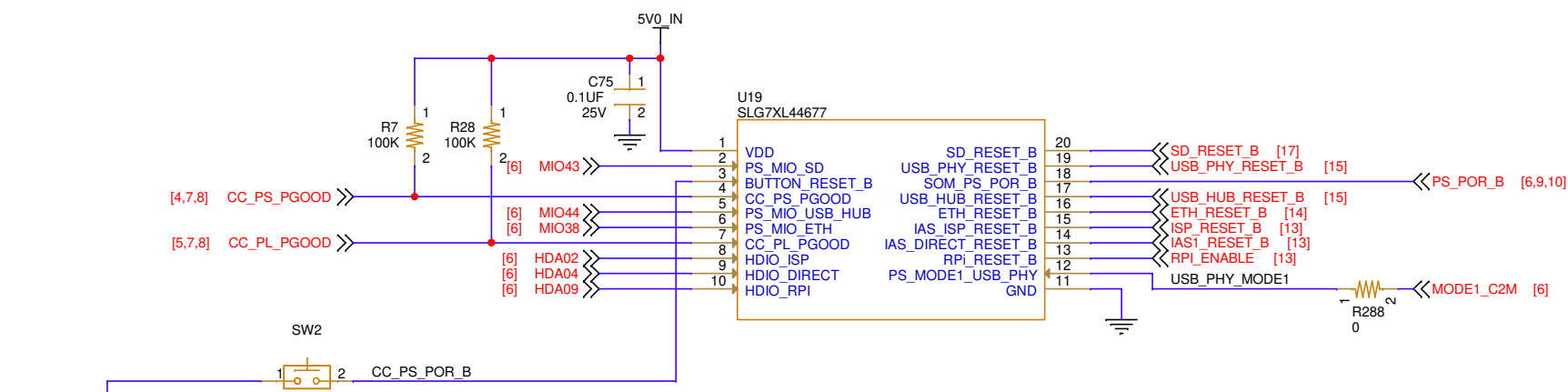
MIO I2C LEVEL SHIFTER



HDA I2C SWITCH



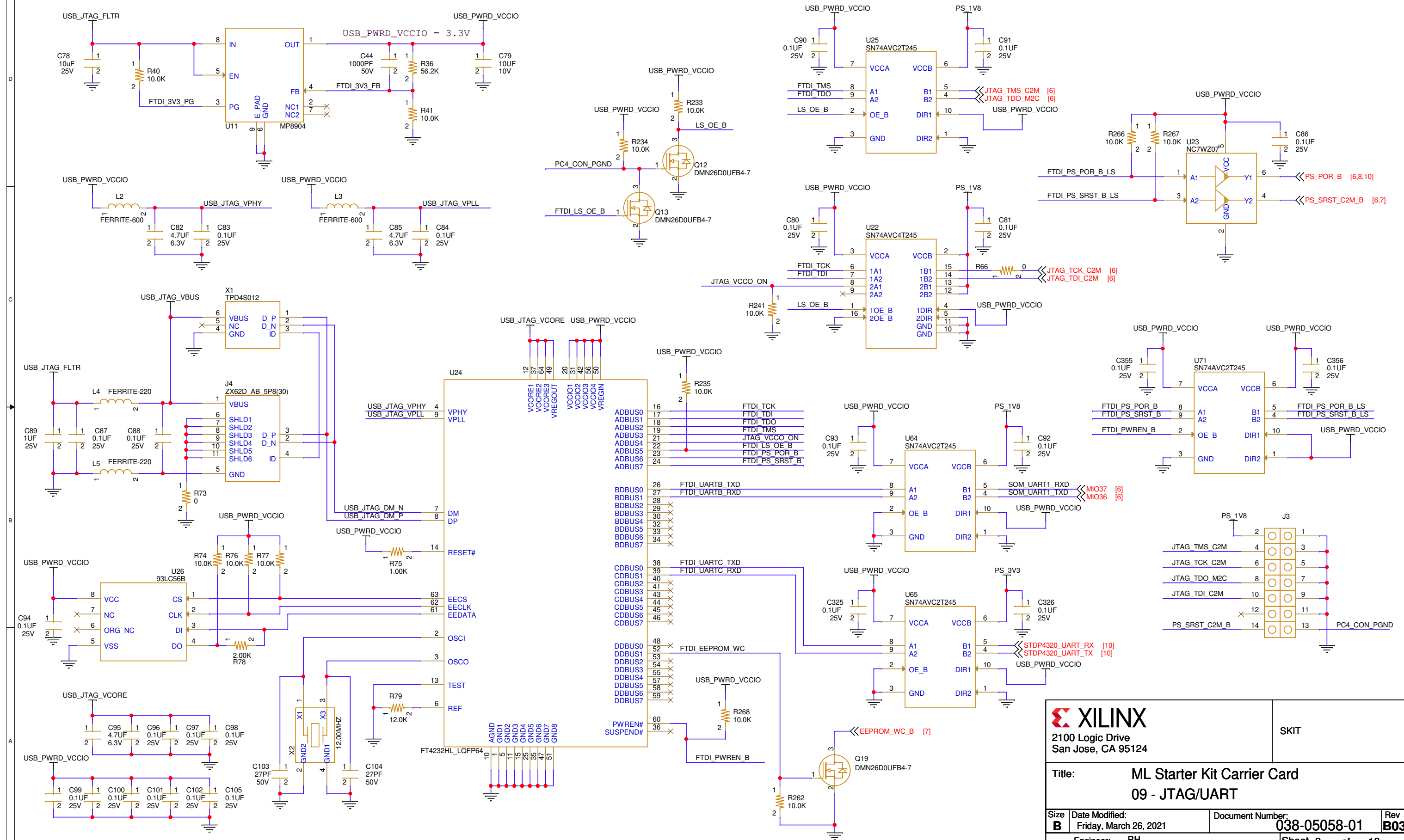
RESET LOGIC



RESET BUTTON

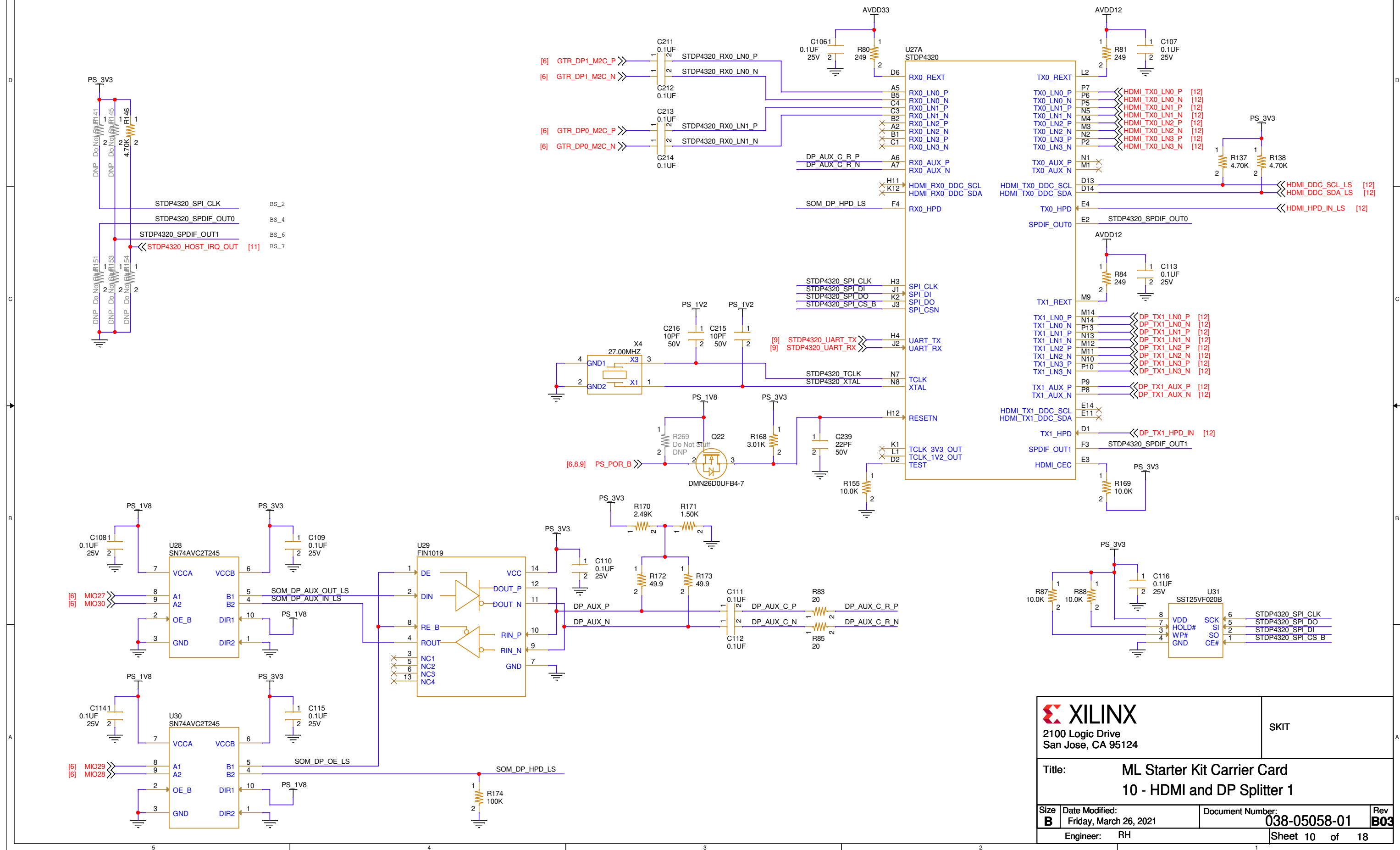
		SKIT	
2100 Logic Drive San Jose, CA 95124		Title: ML Starter Kit Carrier Card 08 - Clock Gen, I2C, Reset	
Size B	Date Modified: Friday, March 26, 2021	Document Number: 038-05058-01	Rev B03
Engineer: RH		Sheet 8 of 18	

FTDI JTAG/UART



 2100 Logic Drive San Jose, CA 95124		SKIT
Title: ML Starter Kit Carrier Card 09 - JTAG/UART		
Size: B	Date Modified: Friday, March 26, 2021	Document Number: 038-05058-01
Engineer: RH	Rev: B03	Sheet 9 of 18

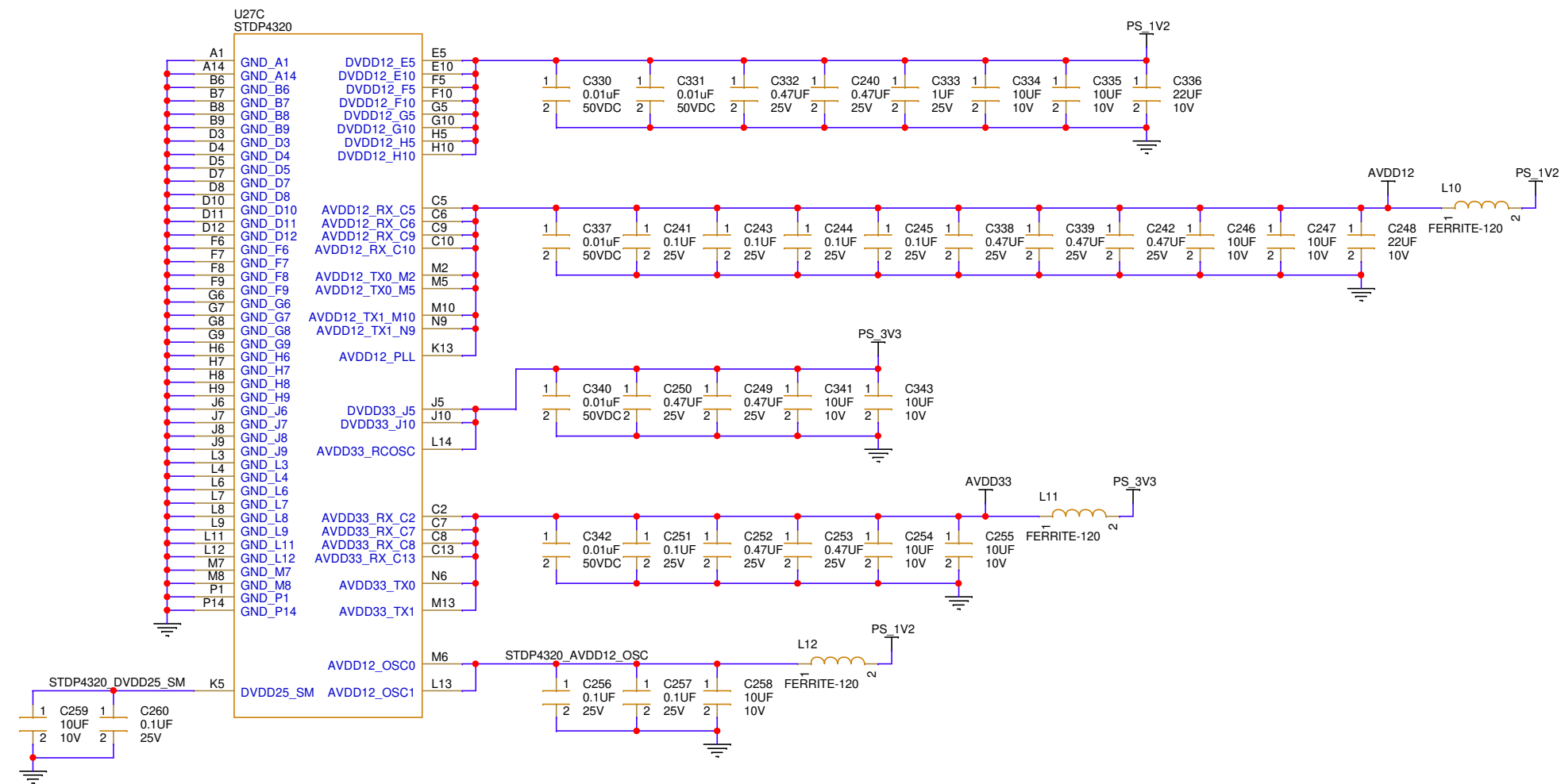
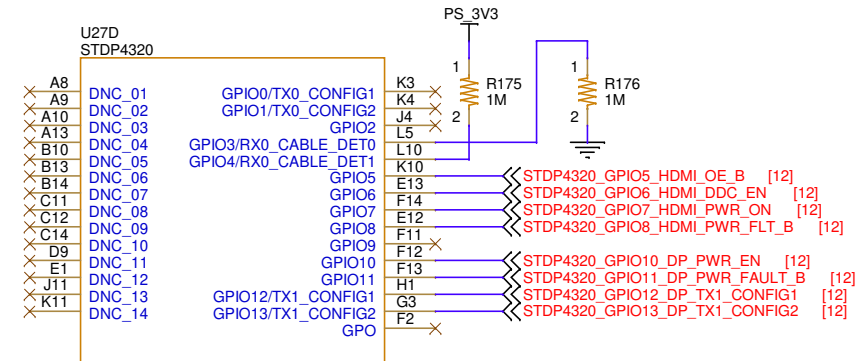
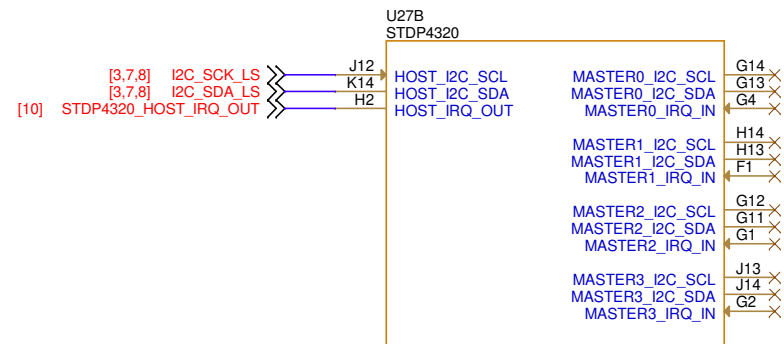
HDMI AND DISPLAYPORT SPLITTER 1



		SKIT	
2100 Logic Drive San Jose, CA 95124			
Title: ML Starter Kit Carrier Card 10 - HDMI and DP Splitter 1			
Size B	Date Modified: Friday, March 26, 2021	Document Number: 038-05058-01	Rev B03
Engineer: RH		Sheet 10 of 18	

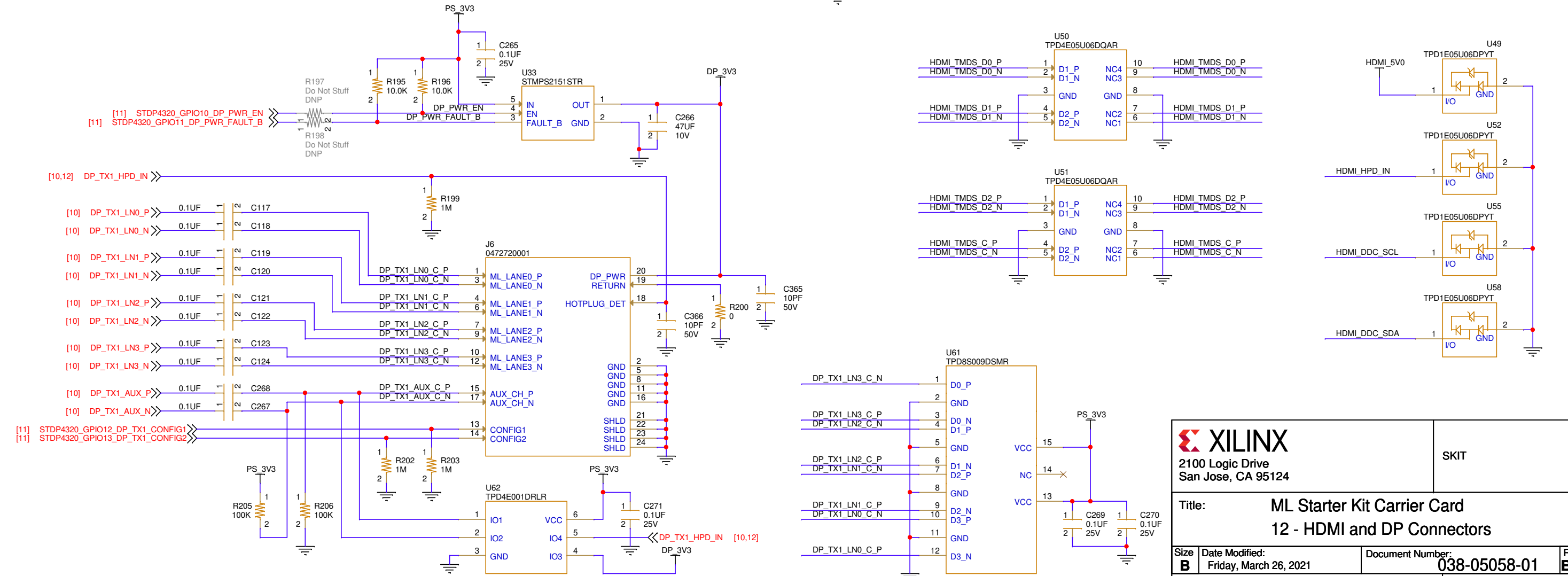
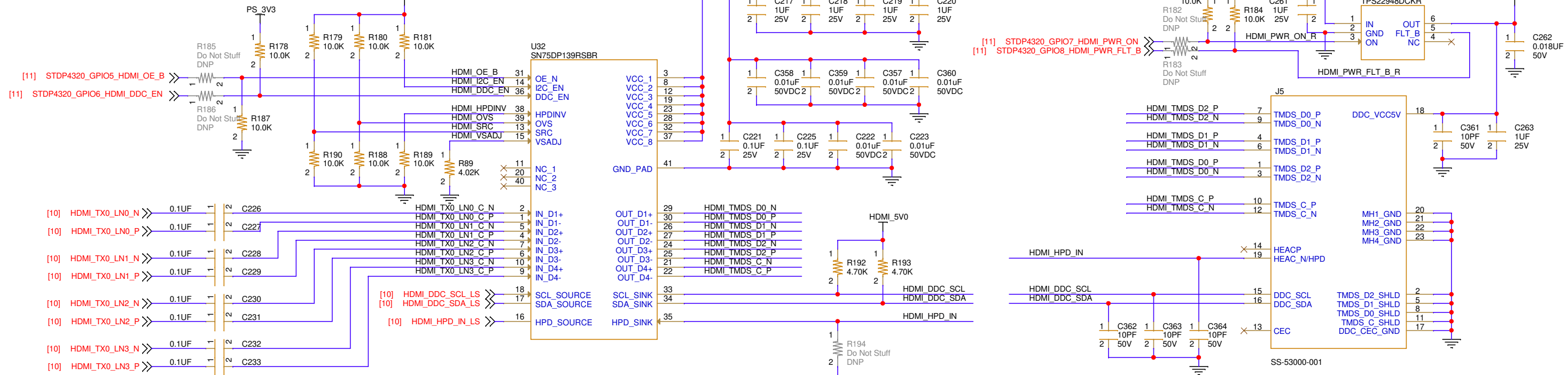
HDMI AND DISPLAYPORT SPLITTER 2

I2C ADDR = 0x73



 2100 Logic Drive San Jose, CA 95124		SKIT
Title: ML Starter Kit Carrier Card 11 - HDMI and DP Splitter 2		
Size: B	Date Modified: Friday, March 26, 2021	Document Number: 038-05058-01
Engineer: RH	Rev: B03	
Sheet 11 of 18		

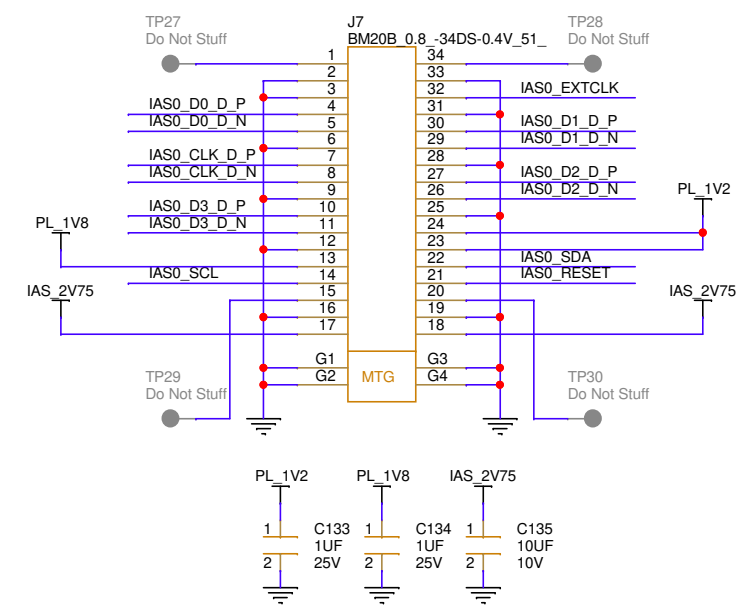
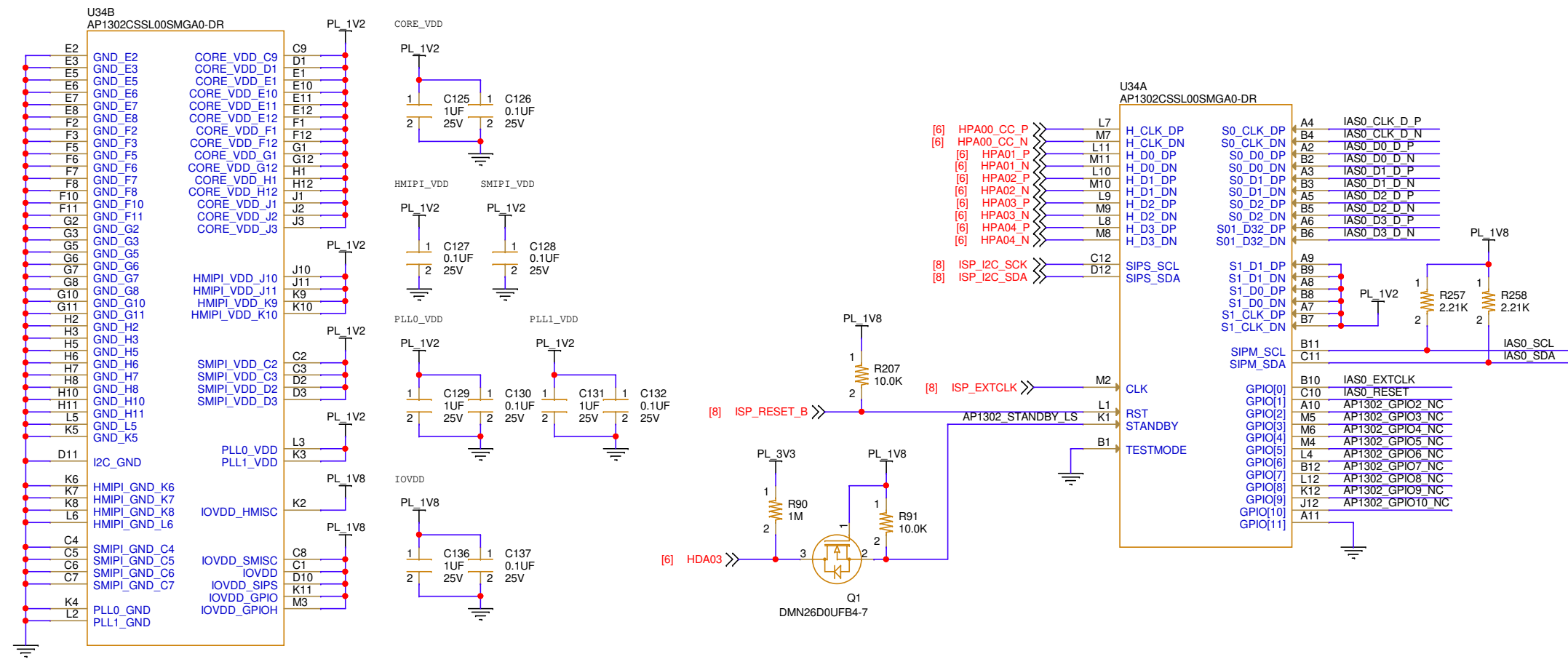
HDMI AND DISPLAYPORT CONNECTORS



XILINX 2100 Logic Drive San Jose, CA 95124		SKIT
Title: ML Starter Kit Carrier Card 12 - HDMI and DP Connectors		
Size B	Date Modified: Friday, March 26, 2021	Document Number: 038-05058-01
Engineer: RH	Rev B03	Sheet 12 of 18

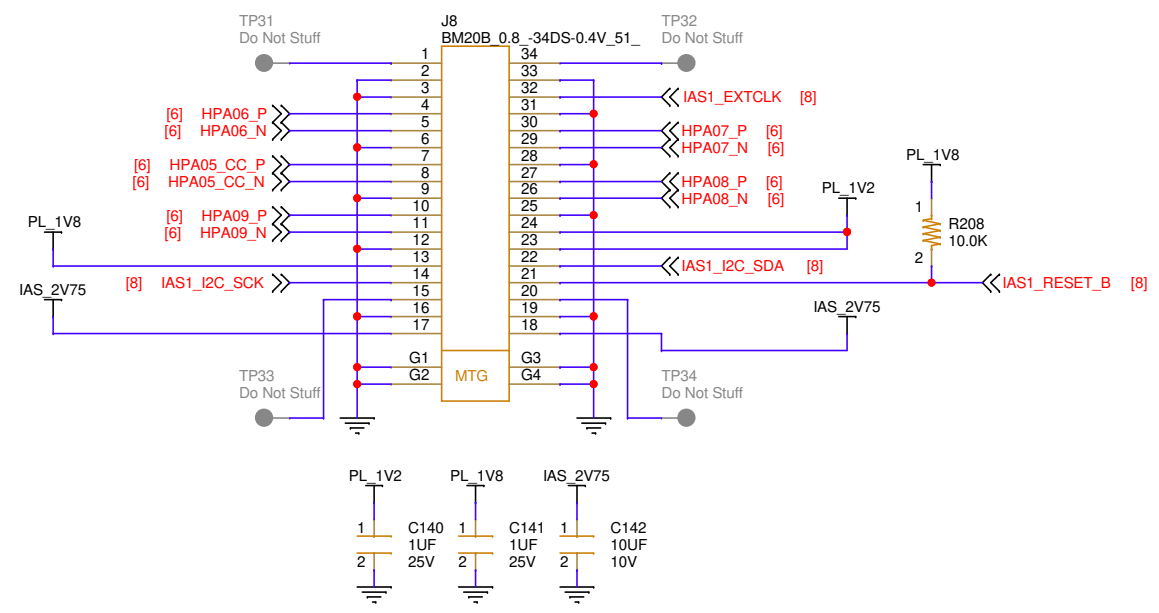
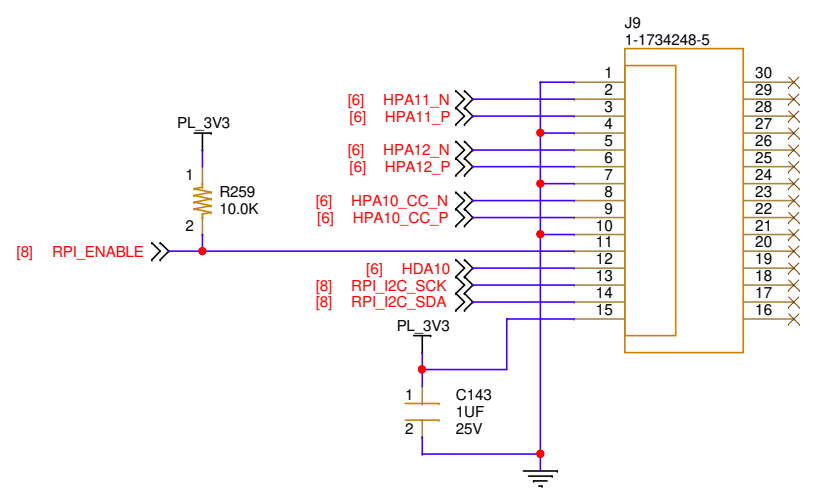
IMAGE CO-PROCESSOR FOR IAS 0 CONNECTOR

IAS 0 CONNECTOR



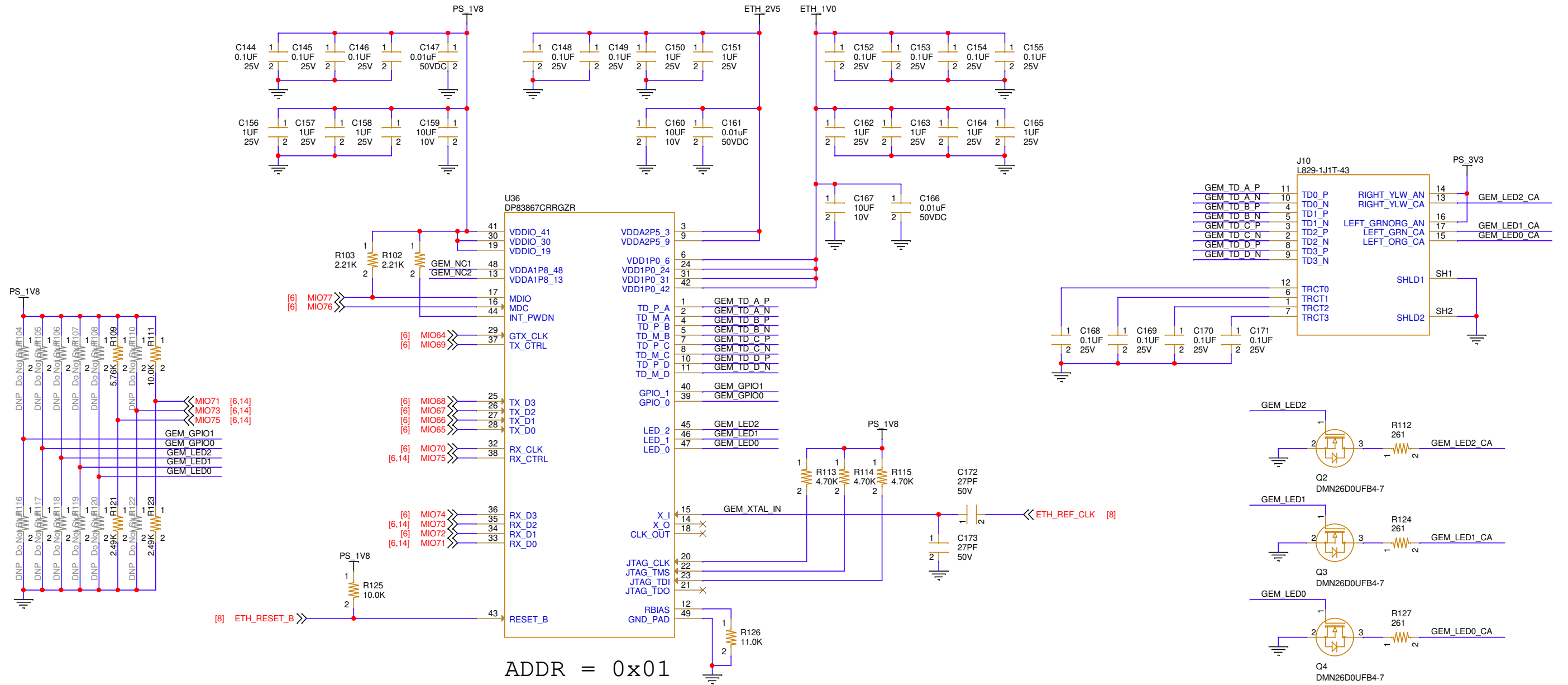
RASPBERRY PI CONNECTOR

IAS 1 CONNECTOR



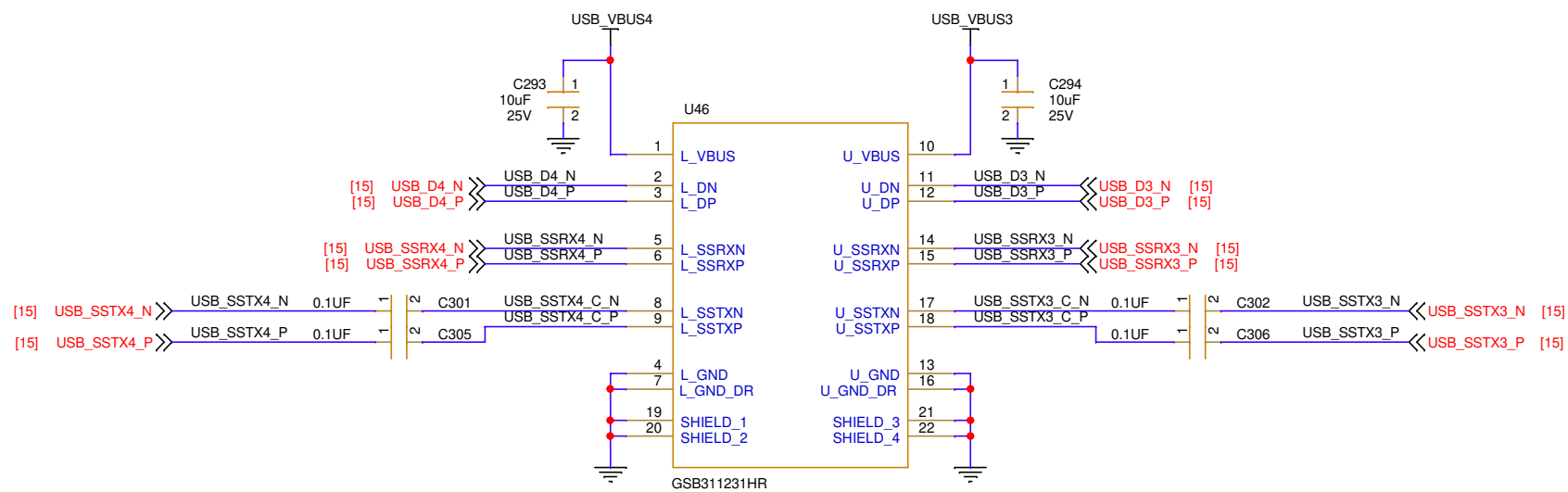
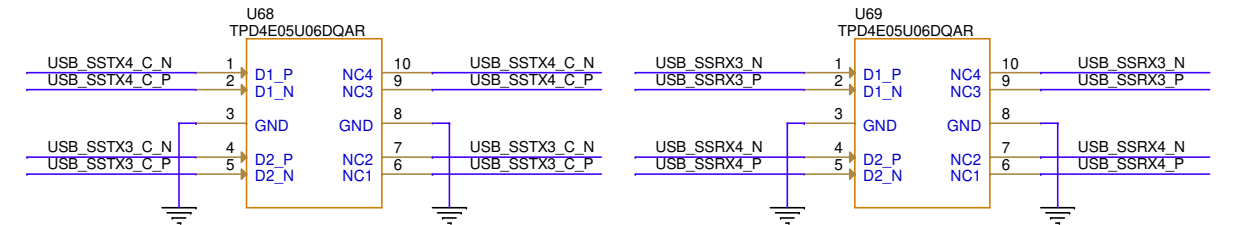
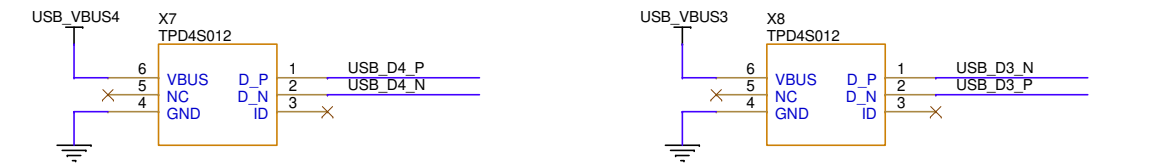
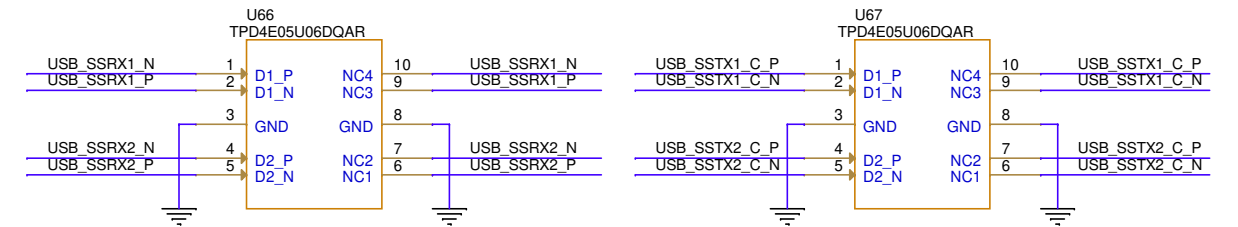
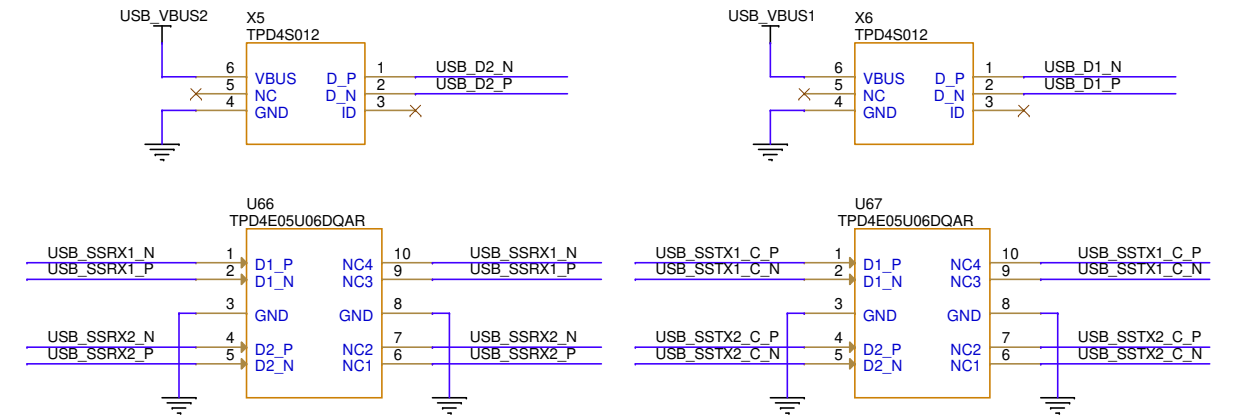
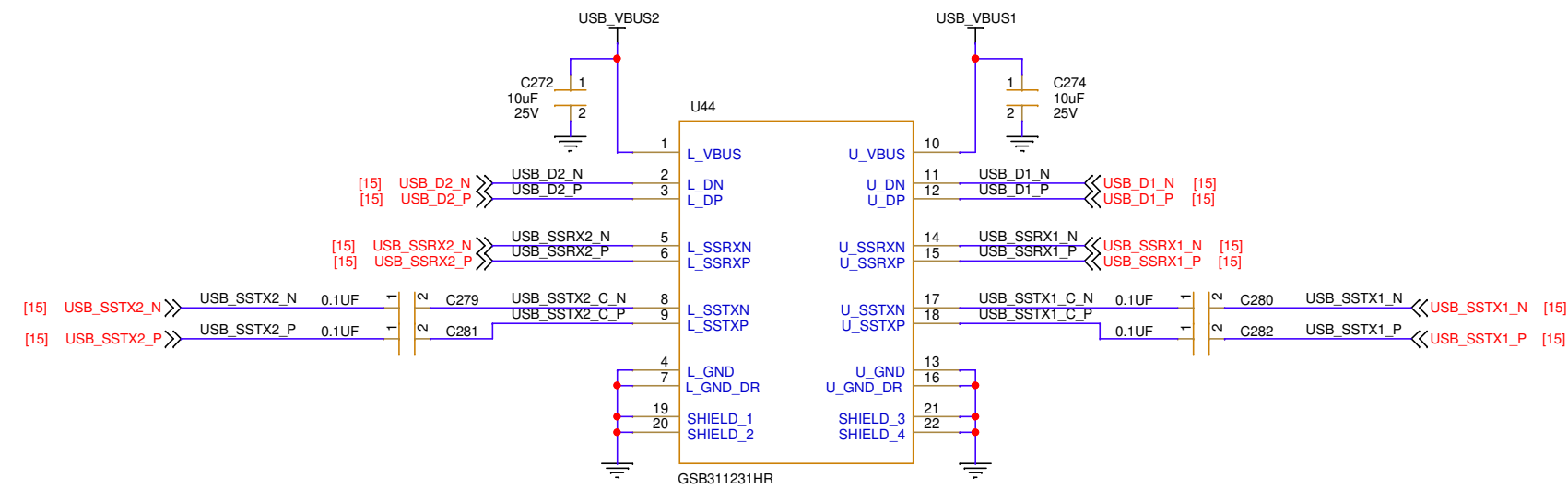
		SKIT	
2100 Logic Drive San Jose, CA 95124			
Title: ML Starter Kit Carrier Card 13 - ISP, IAS, and RPi			
Size B	Date Modified: Friday, March 26, 2021	Document Number: 038-05058-01	Rev B03
Engineer: RH		Sheet 13 of 18	

GIGABIT ETHERNET



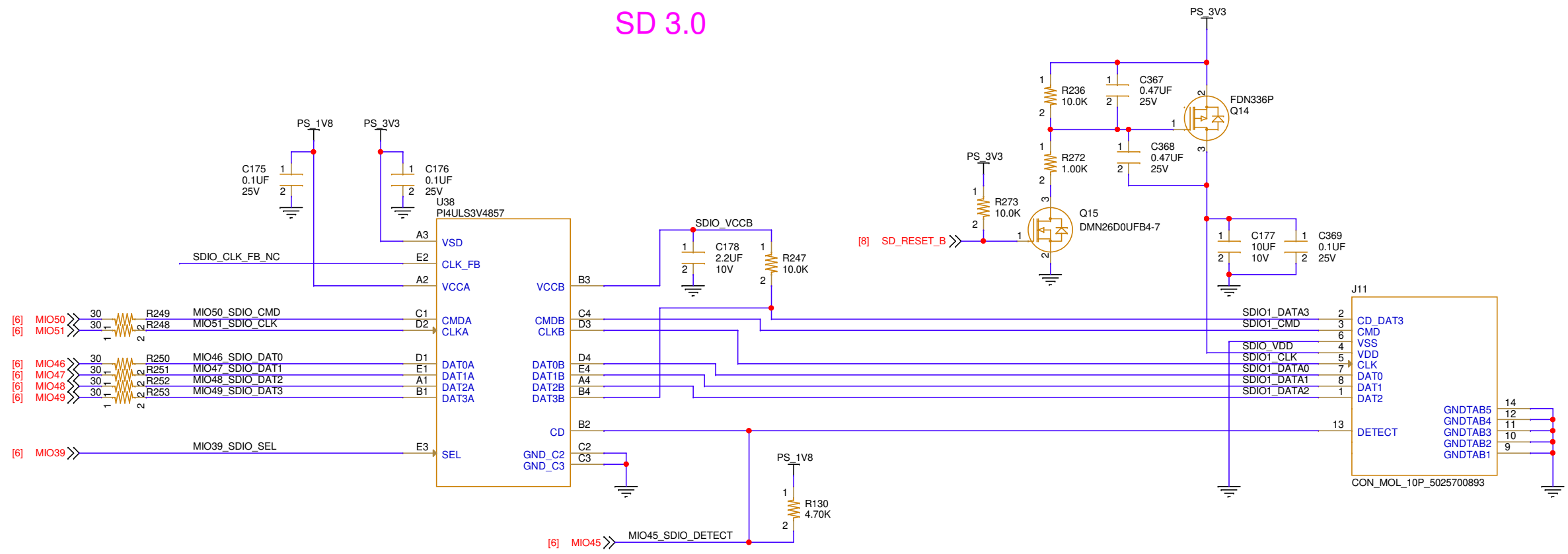
		SKIT	
2100 Logic Drive San Jose, CA 95124			
Title: ML Starter Kit Carrier Card 14 - Ethernet			
Size B	Date Modified: Friday, March 26, 2021	Document Number: 038-05058-01	Rev B03
Engineer: RH		Sheet 14 of 18	

USB CONNECTORS

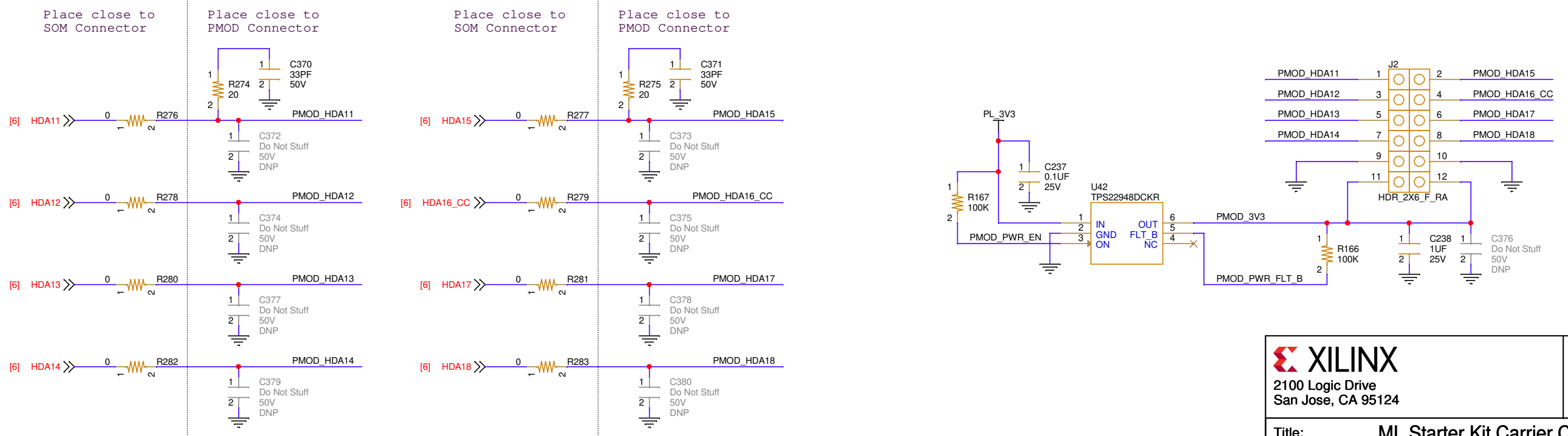


 2100 Logic Drive San Jose, CA 95124		SKIT	
Title: ML Starter Kit Carrier Card 16 - USB Connectors			
Size	Date Modified:	Document Number:	Rev
B	Friday, March 26, 2021	038-05058-01	B03
Engineer: RH		Sheet 16 of 18	

SD 3.0

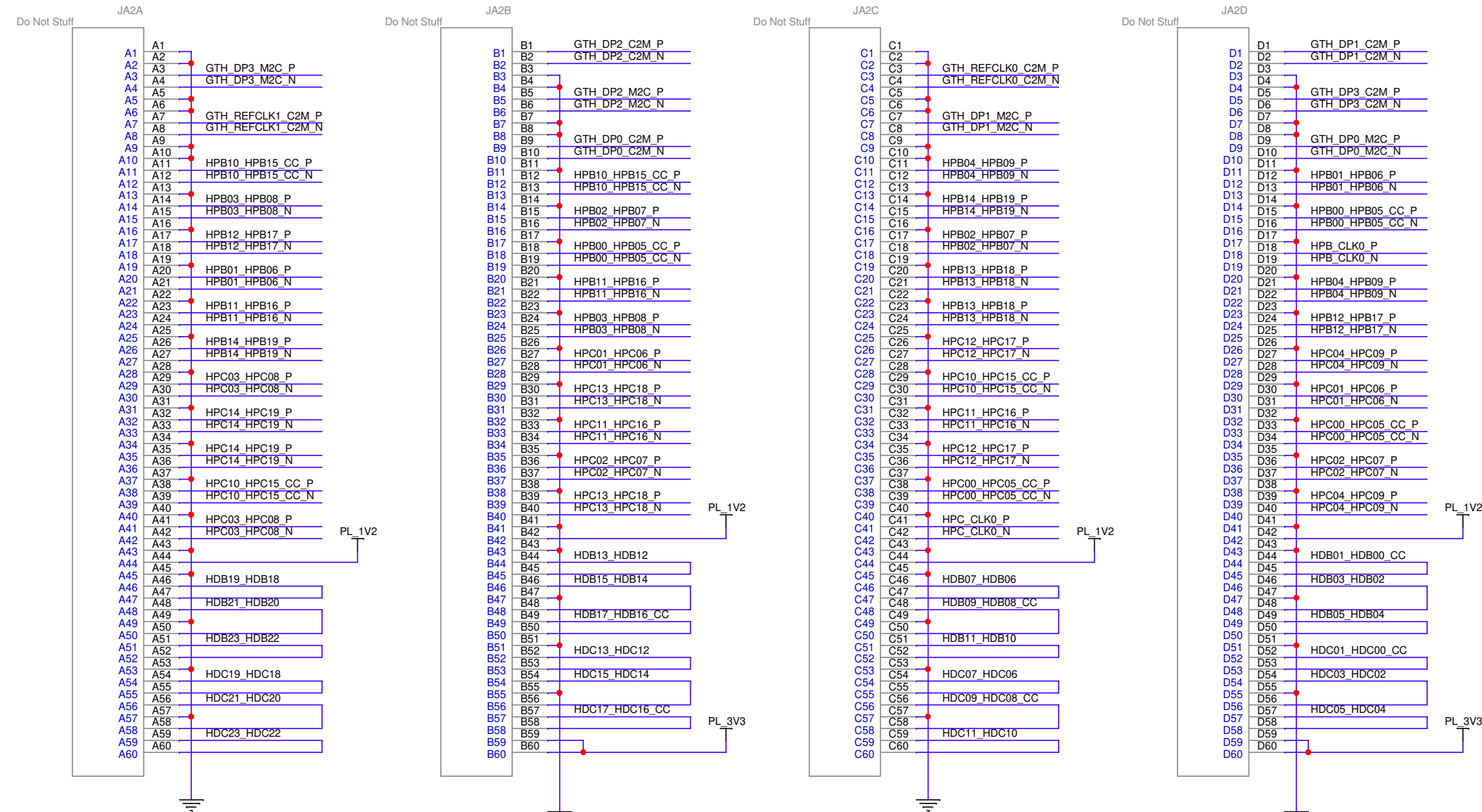


PMOD

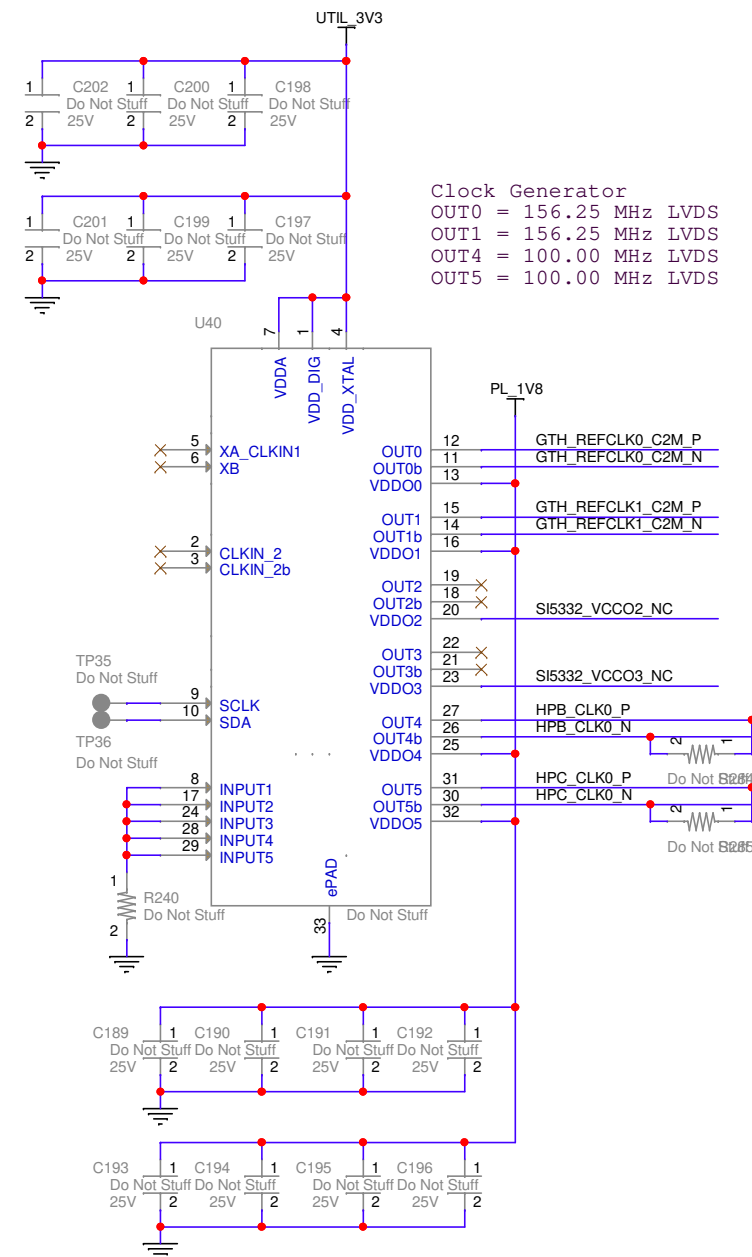


		SKIT	
2100 Logic Drive San Jose, CA 95124			
Title: ML Starter Kit Carrier Card 17 - SD Card, PMOD			
Size: B	Date Modified: Friday, March 26, 2021	Document Number: 038-05058-01	Rev: B03
Engineer: RH		Sheet 17 of 18	

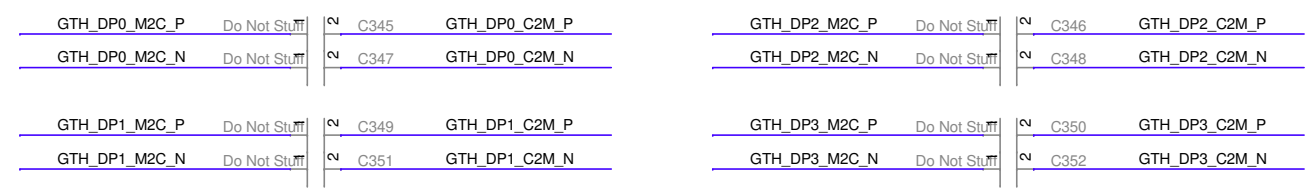
SOM240_2 CONNECTOR



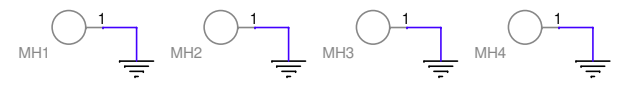
CLOCK GENERATOR FOR LOOPBACK TEST



GTH AC COUPLING



FOUR CORNER MOUNTING HOLES



		SKIT	
2100 Logic Drive San Jose, CA 95124			
Title:		ML Starter Kit Carrier Card 18 - SOM240_2 Loopback, MH	
Size B	Date Modified: Friday, March 26, 2021	Document Number: 038-05058-01	Rev B03
Engineer: RH		Sheet 18 of 18	