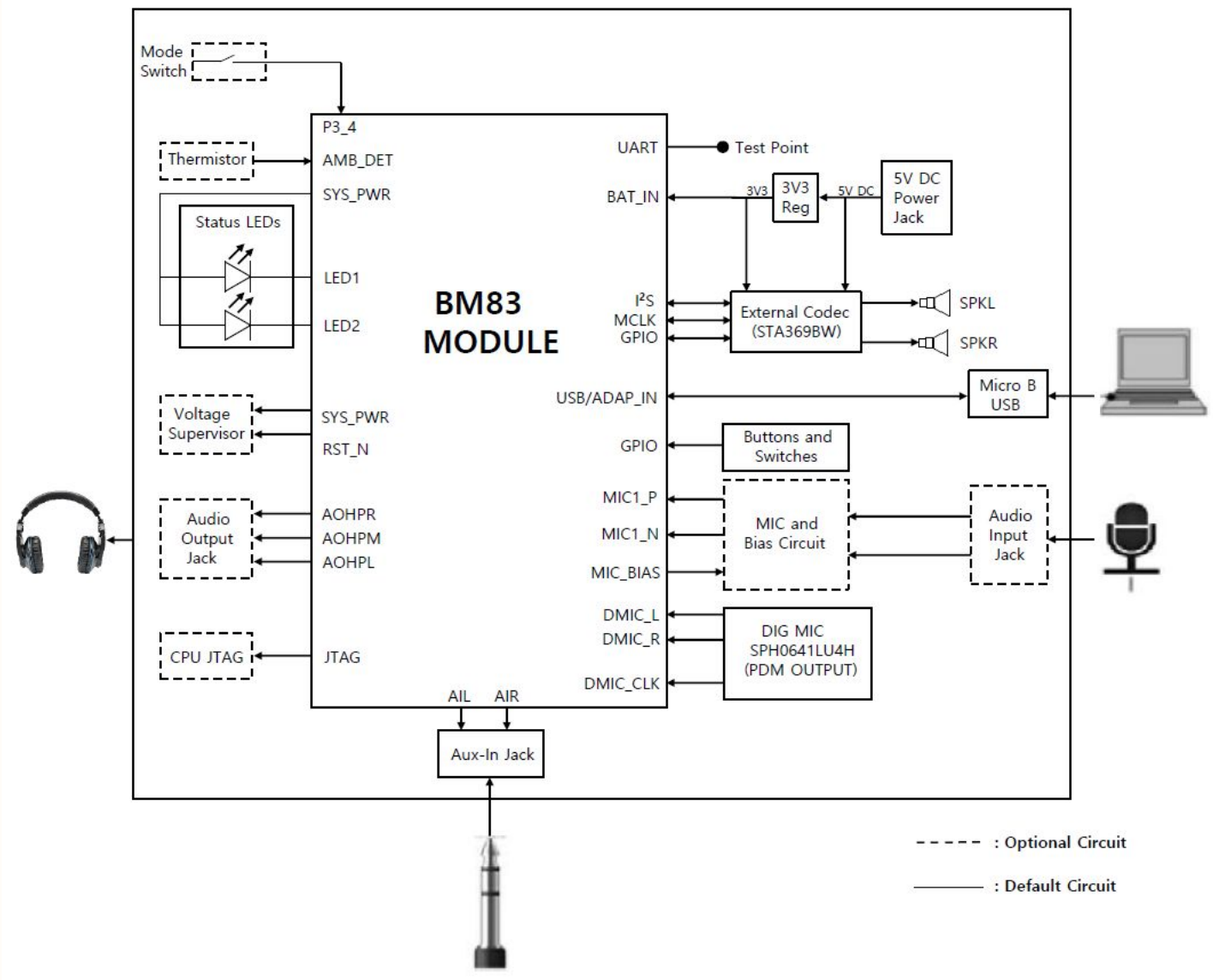
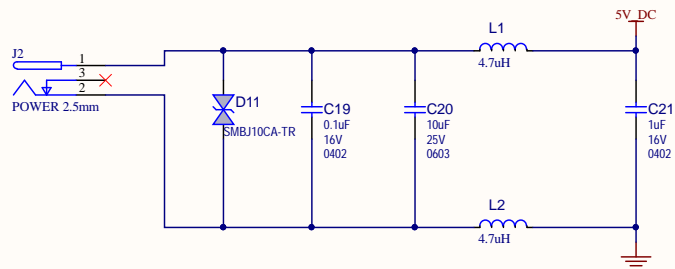


REV	ECO#	DESCRIPTION	DATE
Draft		Initial Version	07May2019
0.9		Draft Release	27May2019
1.0		Final Release	06Aug2019
1.1		Release Update	20Dec2019

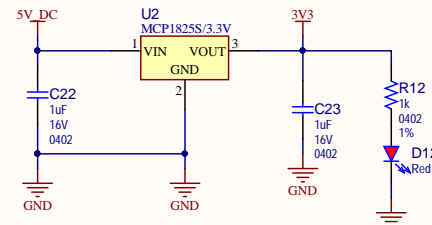


Drawn By: Chetan Bohra			
Engineer: Chetan Bohra			
PartNumber:	Project Title BM83 Reference Circuit for Embedded Mode		
Sheet Title			
Revision History			
Rev	Sch #03-	Date: 2019/12/23 下午 05:12:26	
Rev	Revision:0.9	Sheet 1 of 4	
File: 01 BLOCK DIAGRAM.SchDoc			

5V DC POWER JACK

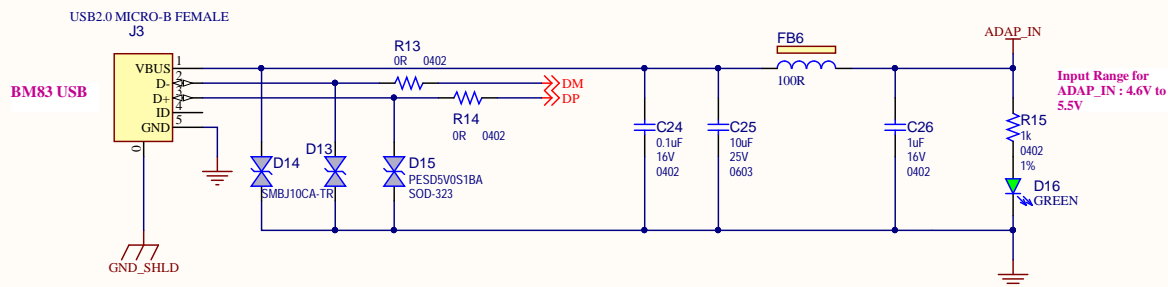


5V TO 3V3 GENERATION

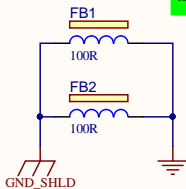


NOTE:
 1). Using 3V3 LDO supply for BM83's BAT_IN, ensure there is no voltage drop when transient current is drawn from BM83 module.
 2). Alternatively, make use of a LDO configured for 3V6 for BAT_IN, to provide additional margin to encounter the v_{tg} drop due to transients.
 3). Ensure the charger function is disabled in configuration tool.

USB CONNECTOR



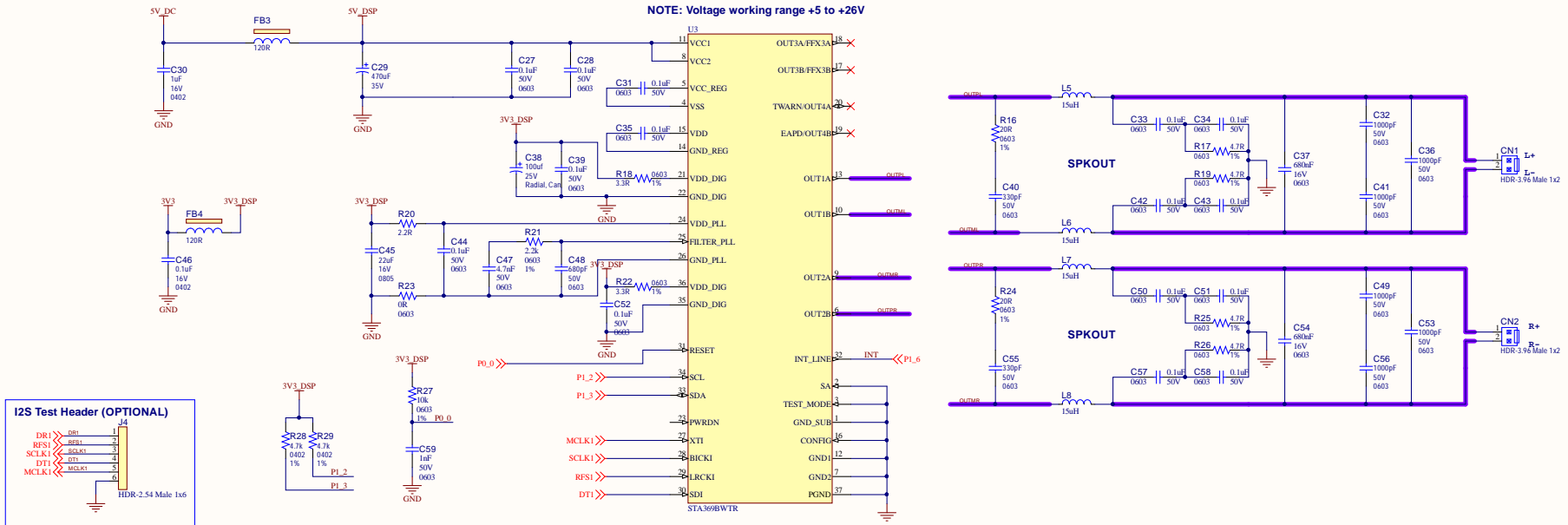
CAD Note:
 ESD Diodes to be placed closest to the USB connector



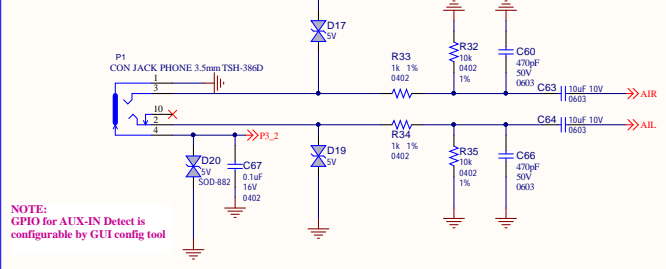
NOTE:
 USB connector is used in following case:
 1). DFU (Device Firmware Upgrade) in application mode.
 2). Firmware update in Test mode

Drawn By: Chetan Bohra		
Engineer: Chetan Bohra		
PartNumber:	Project Title BM83 Reference Circuit for Embedded Mode	
Sheet Title Power Supply		
Size B	Sch #03- Revision:0.9	Date: 2019/12/23 下午 05:12:26 Sheet 3 of 4
File: 03_POWER_SUPPLY.SchDoc		Designed with

EXTERNAL CODEC (STA369BW)

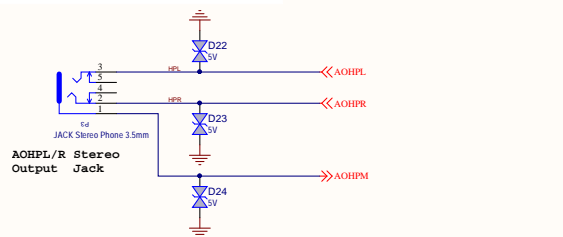


STEREO AUX LINE INPUT

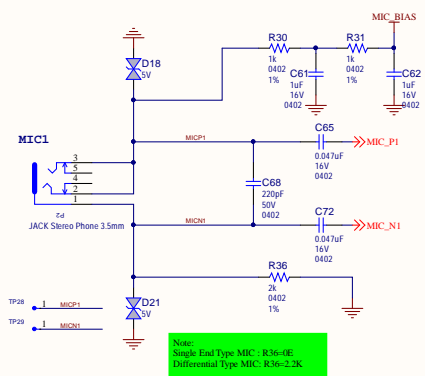


AUDIO HEADSET CAPLESS OUTPUT (OPTIONAL)

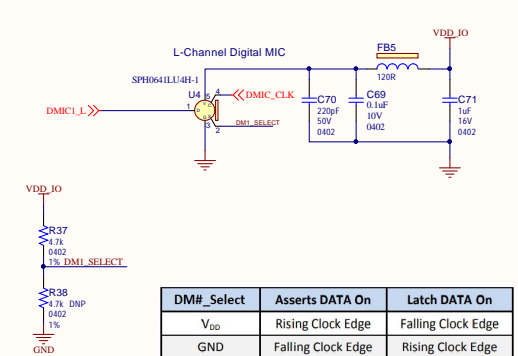
NOTE:
This is optional. Required for Headset application with internal codec.



ANALOGY MICROPHONE (OPTIONAL)



DIG MICROPHONE with PDM OUTPUT



NOTE:
1). Either DIG MIC or ANA MIC is functional, not both
2). DIG MIC is the default configuration in the FW
3). BMS3 supports 2 DIG MIC (L&R) but only 1 DIG MIC is supported in the current FW