

AVRISP mkII in ISP mode with ATmega88

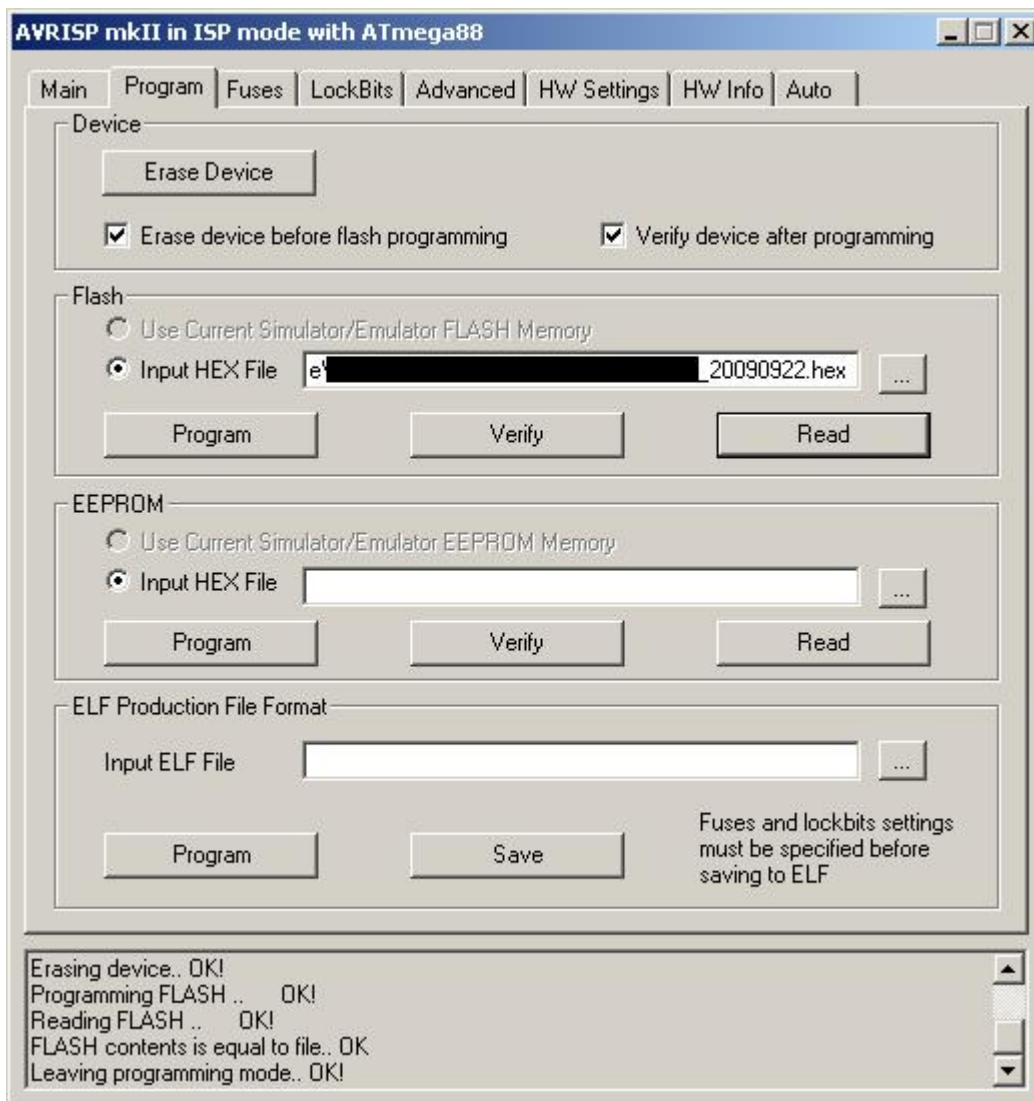
Main | Program | **Fuses** | LockBits | Advanced | HW Settings | HW Info | Auto

Fuse	Value
BOOTSZ	Boot Flash size=512 words Boot address=\$0E00 ▼
BOOTRST	<input checked="" type="checkbox"/>
RSTDISBL	<input type="checkbox"/>
DWEN	<input type="checkbox"/>
SPIEN	<input checked="" type="checkbox"/>
WDTON	<input type="checkbox"/>
EESAVE	<input checked="" type="checkbox"/>
BODLEVEL	Brown-out detection at VCC=2.7 V ▼
CKDIV8	<input type="checkbox"/>
CKOUT	<input type="checkbox"/>
SUT_CKSEL	Ext. Crystal Osc. 8.0 MHz; Start-up time PWRDWN/RESET: 258 CK/14. ▼

EXTENDED	0xFA
HIGH	0xD5
LOW	0xDE

Auto read
 Smart warnings
 Verify after programming

Setting mode and device parameters.. OK!
 Entering programming mode.. OK!
 Reading fuses address 0 to 2.. 0xDE, 0xD5, 0xFA .. OK!
 Leaving programming mode.. OK!



Getting isp parameter.. SD=0x06 .. OKOK
Reading FLASH input file.. OK
Setting mode and device parameters.. OK!
Entering programming mode.. OK!
Erasing device.. OK!
Programming FLASH .. OK!
Reading FLASH .. OK!
FLASH contents is equal to file.. OK
Leaving programming mode.. OK!

AVRISP mkII in ISP mode with ATmega88

Main Program Fuses LockBits Advanced HW Settings HW Info Auto

Fuse	Value
LB	No memory lock features enabled
BLB0	No lock on SPM and LPM in Application Section
BLB1	No lock on SPM and LPM in Boot Section

LOCKBIT	0xFF
---------	------

Auto read
 Smart warnings
 Verify after programming

To clear lockbits, use Erase Device on Main tab

Program Verify Read

Setting mode and device parameters.. OK!
Entering programming mode.. OK!
Reading lockbits .. 0xFF .. OK!
Leaving programming mode.. OK!

AVRISP mkII in ISP mode with ATmega88 [min] [max] [close]

Main | Program | Fuses | LockBits | **Advanced** | HW Settings | HW Info | Auto

Oscillator Calibration Byte

Calibrate for frequency

8.0 MHz

Value: 0x95 Address: [] Flash Eeprom

Read Write

Setting mode and device parameters.. OK!
Entering programming mode.. OK!
Reading calibration byte .. 0x95 .. OK!
Leaving programming mode.. OK!

