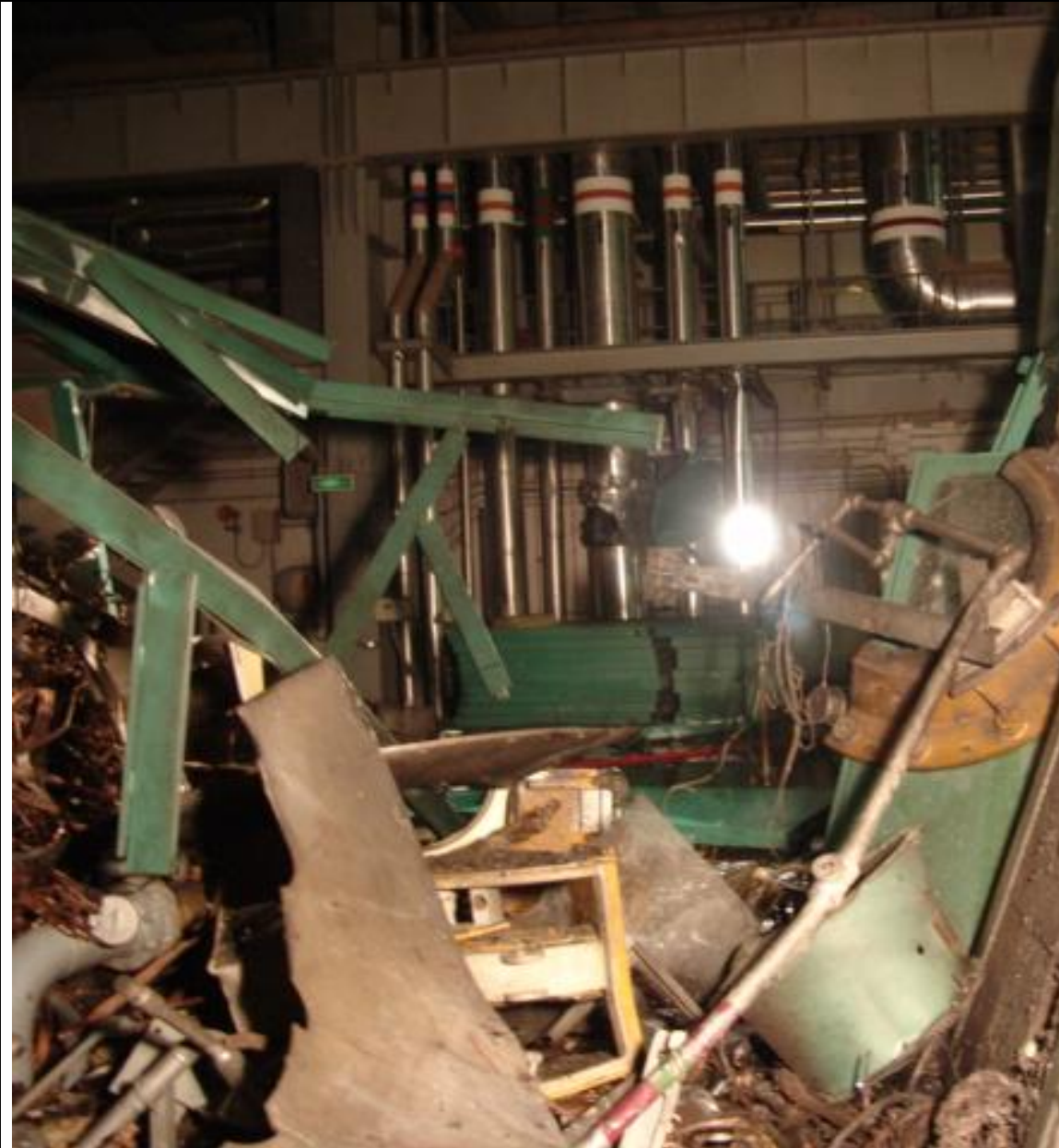




Pic#1: General View of the Generator # 7 on Slip Ring / Exciter Side



Pic#2: Extent of Damage to The Generator Viewed from Boiler Side-
General View.



Pic#3: Extent of Damage to The Generator Viewed from Desal Side-
General View.



Pic# 4: General View of the Generator Viewed from Exciter Side.



Pic#5: Exciter End Generator Rotor Retaining Ring Lying Near Static Exciter Panel.



Pic# 6: Damage between Turbine-Generator Viewed from Desal Side.



Pic# 7: Turbine Generator Bearing Lying Near Door on Desal Side.



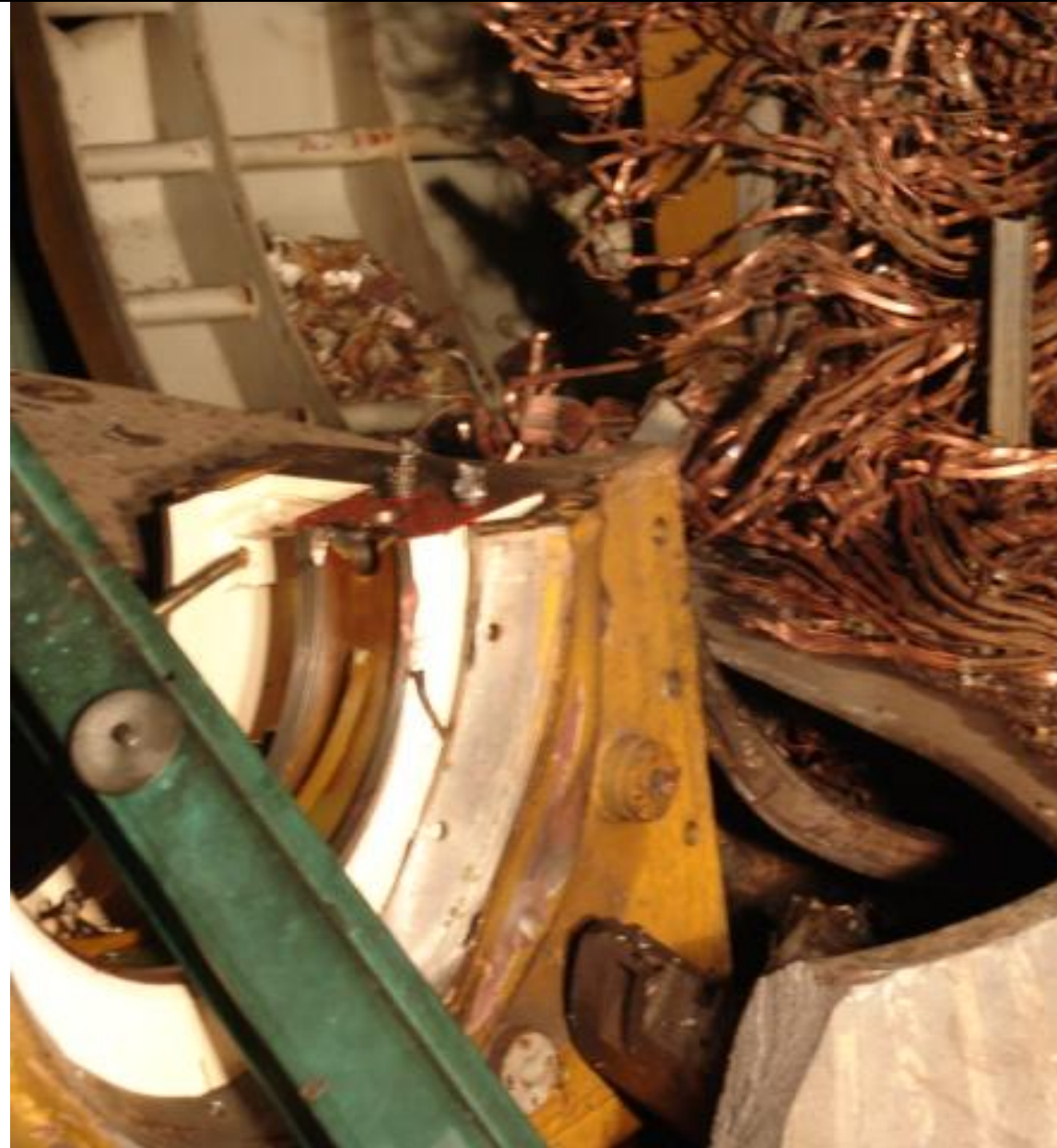
Pic # 8: Damage to Turbine Insulation- HP Side.



Pic# 9: Damage to Generator on Turbine Side-Retaining Ring Flown out towards Turbine Side.



Pic# 10: Flying Piece Damaged LP Steam Line to Dearator.



Pic#11: Damage to the Generator Stator, Rotor and Bearing Housing on Exciter Side.



Pic# 12: Damage to Side Wall between Switchgear Room and Boiler



Pic#13: A Piece of Generator Flown to Boiler Area After Piercing the LP Steam Pipe, Switchgear room walls and one I- beam.



Pic#14: Sheared off Part of Generator Rotor Shaft of Exciter end.



Pic# 15: Damage to Turbine LP Casing.



Pic# 16: Damage to Generator Stator Core.



Pic# 17: Damage Occurred to Switchgear Room Wall –Viewed from Switchgear Room.



Pic# 18: Damage to Switchgears.



Pic# 19: A Metal Piece Flown and lying on Ceiling of the Turbine Hall.