



INFORMAZIONI TECNICHE

**Organo Elettronico
Mod. 250**

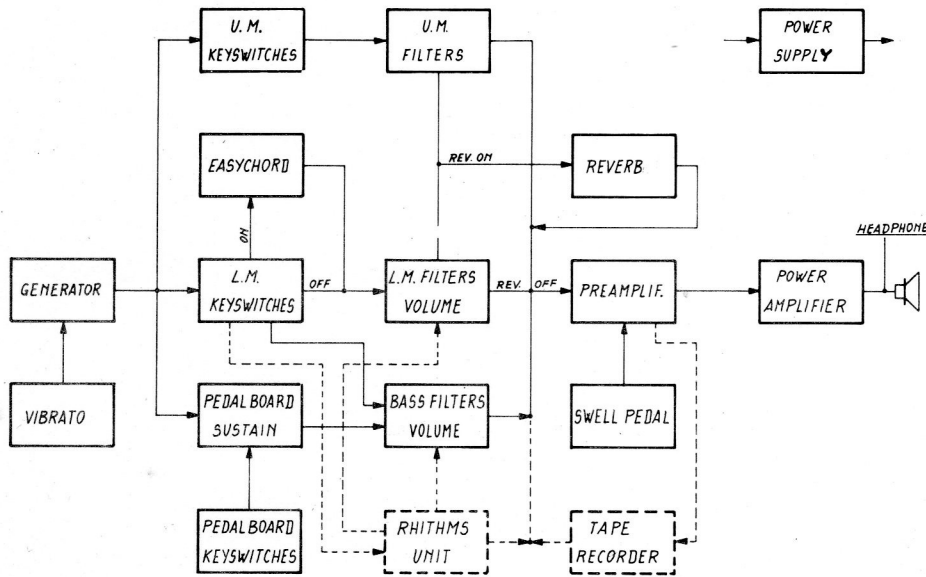
IMPORTANT: IN ANY CORRESPONDENCE CONCERNING THIS INSTRUMENT ALWAYS INCLUDE MODEL AND SERIAL NUMBERS!

PARTS ORDERING – When ordering parts be sure to include the following information:

1. Model and serial Number of instrument.
2. Part Code.
3. A description of the Part.
4. Specify how you want the part shipped.

**FARFISA COMPANY - WHOSE POLICY IS
CONSTANTLY DIRECTED TO IMPROVEMENTS
AND NEW DEVELOPMENTS - RESERVES THE
RIGHT TO CHANGE SPECIFICATIONS, DESIGNS,
PRICES, MODELS AND TO DISCONTINUE
MODELS WITHOUT NOTICE AND LIABILITY.**

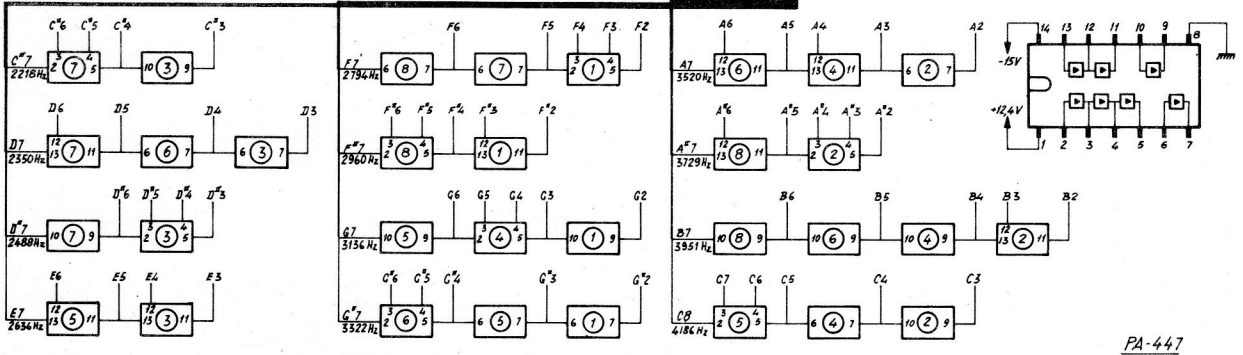
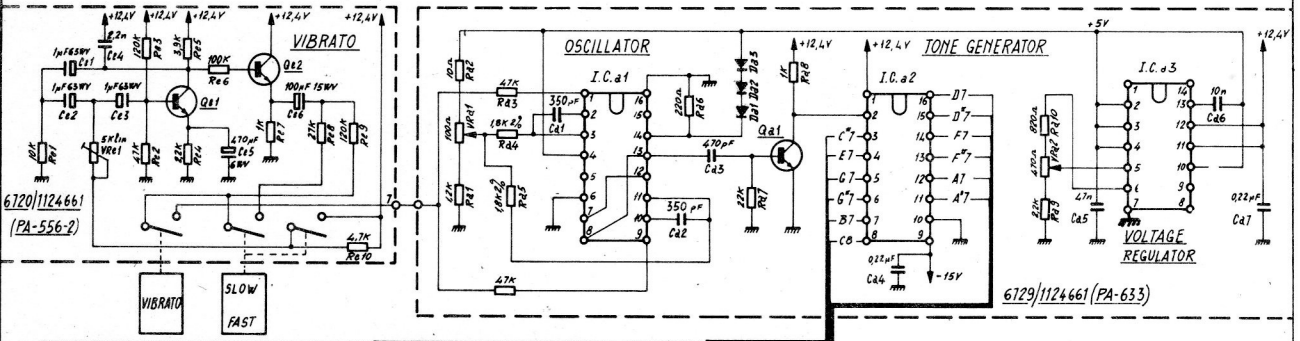
BLOCK DIAGRAM



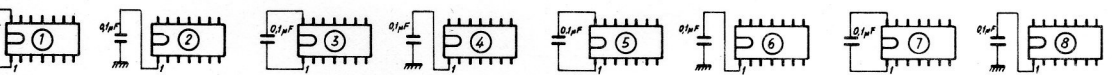
- 1-ALL RESISTORS 1/4W UNLESS OTHERWISE INDICATED
- 2-ALL TABSWITCHES SHOWN IN OFF POSITION
- 3-ALL KEYSWITCHES SHOWN IN OFF POSITION
- 4-SEE PARTS LIST FOR COMPONENT PART NUMBERS
- 5-ALL D.C. VOLTAGES MEASURED TO GROUND WITH A VOLTMETER 20000Ω/V

MOD: 250	DESIGNED BY	SERIAL NO.
CODE	REVISION	DATE
5E/218		

DWG 1 of 3

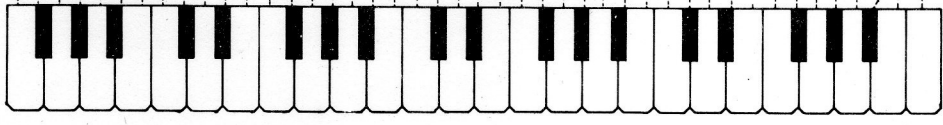


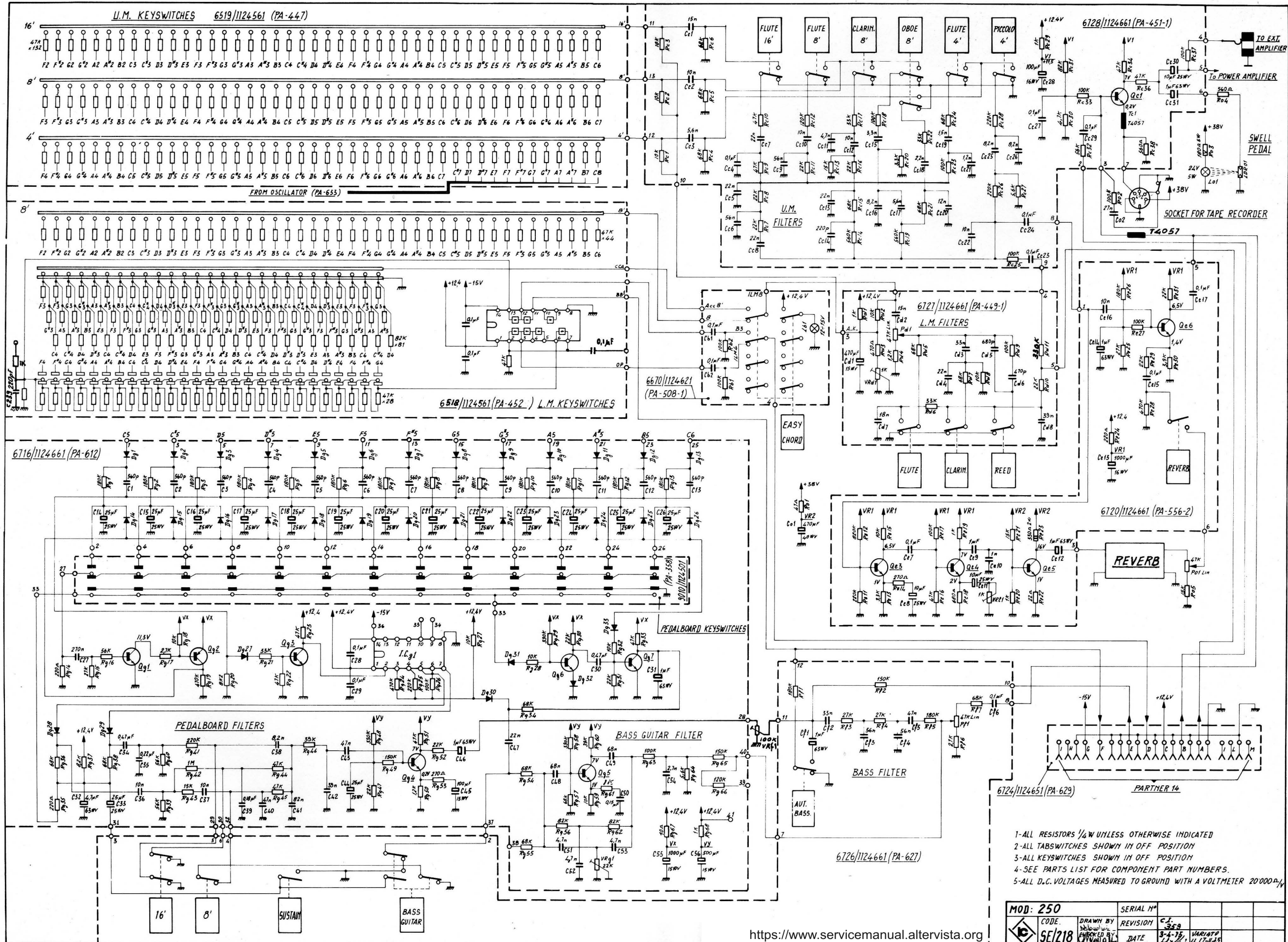
PA-447



L.M.	8'	I.C. No	1	1	1	2	2	2	3	3	3	3	1	1	4	5	4	2	2	4	7	6	3	3	1	8	4	6	4	2	4	5	7	7	3	5	7	8	4	6	8	6	5		
		Pin No	5	11	9	7	7	5	11	9	9	7	5	11	4	12	5	7	11	4	12	7	5	7	4	12	3	5	4	5	12	3	9	5	4	11	3	11	7	4	3	4	11	11	9
U.M.	8'	I.C. No	1	1	4	5	4	2	2	4	7	6	3	3	1	8	4	6	4	2	4	5	7	7	3	5	7	8	4	6	6	8	6	5											
		Pin No	4	12	5	7	11	4	12	7	5	7	4	12	3	5	4	11	3	11	7	4	3	4	11	11	9	4	3	12	9	12	7	3	9	3	12	12	9	3					
	4'	I.C. No	1	8	4	6	4	2	4	5	7	7	3	5	7	8	4	6	8	6	5	7	7	5	8	8	5	6	6	8	8	5													
		Pin No	3	5	4	5	12	3	9	5	4	11	3	11	7	4	3	4	11	11	9	4	3	12	9	12	7	3	9	3	12	12	9	3											

FROM OSCILLATOR PA-633





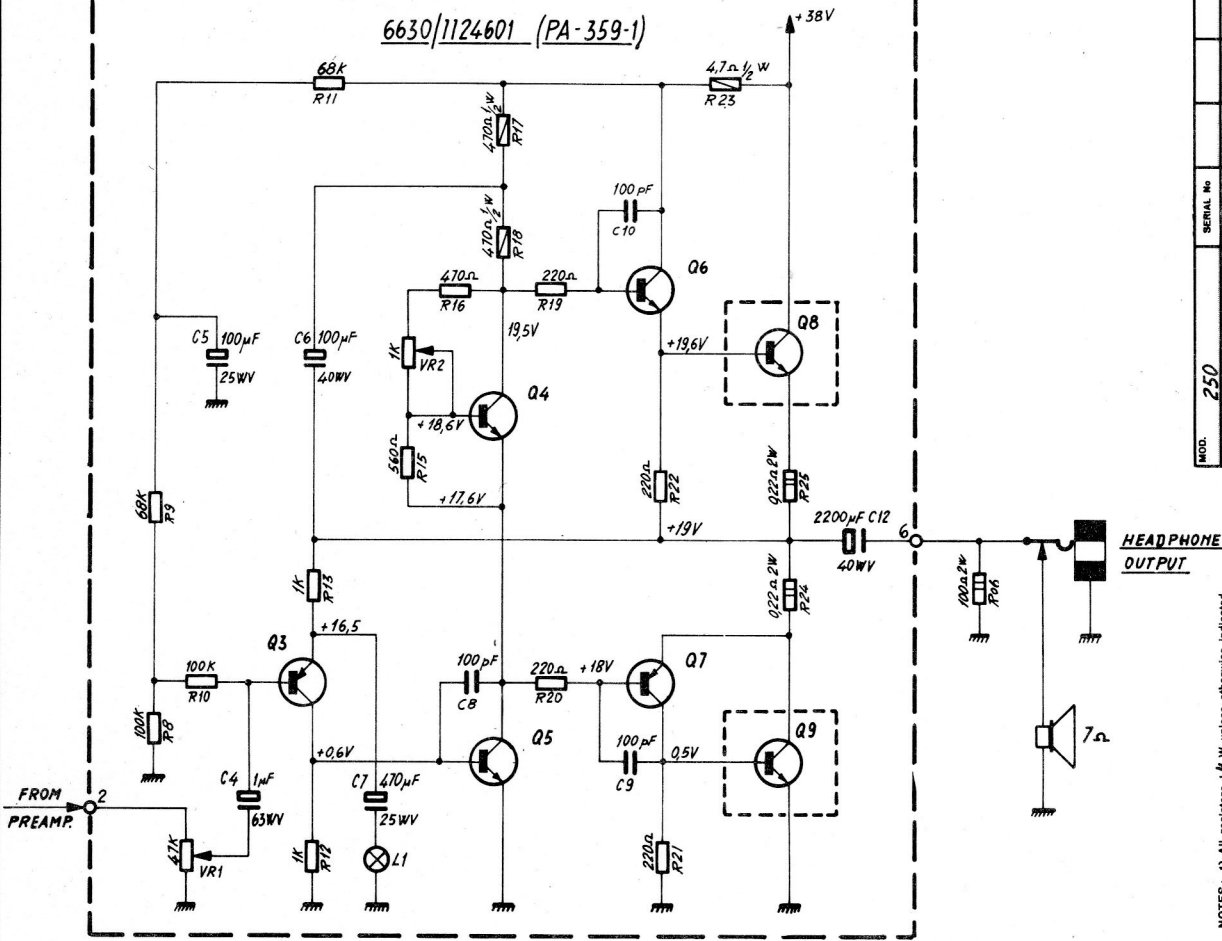
- 1-ALL RESISTORS 1/4W UNLESS OTHERWISE INDICATED
- 2-ALL TABSWITCHES SHOWN IN OFF POSITION
- 3-ALL KEYSWITCHES SHOWN IN OFF POSITION
- 4-SEE PARTS LIST FOR COMPONENT PART NUMBERS.
- 5-ALL D.C. VOLTAGES MEASURED TO GROUND WITH A VOLTMETER 20000Ω

MOD: 250	SERIAL N°		
CODE	DRAWN BY	REVISION	C.I.
SE/218	DATE	3-4-75	11-17-75
	DATE		
			VARIANTS
			11-17-75

DWG 2 OF 3

POWER AMPLIFIER

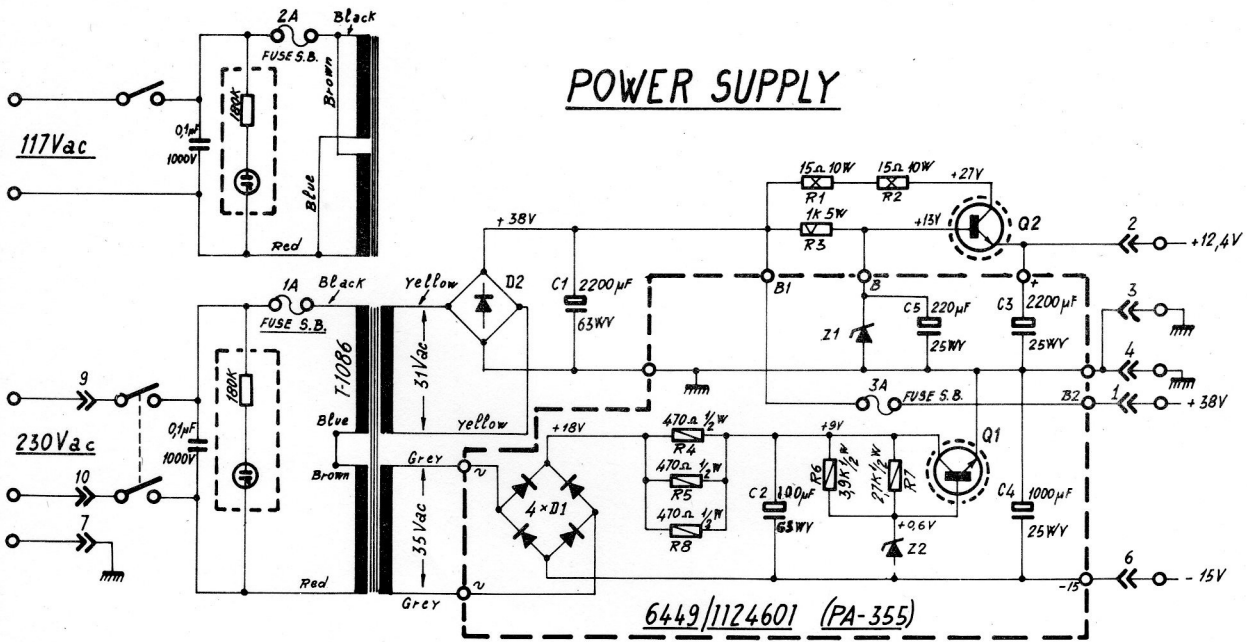
6630/1124601 (PA-359-1)



MOD.	250	CODE	5E/218
DESIGNED BY	[Signature]		
DRAWN BY	[Signature]		
REVISION	DATE		
SERIAL No	DATE		

NOTES: 1) All resistors 1/4W unless otherwise indicated.
 2) All capacitors shown in OFF position.
 3) All keyswitches shown in OFF position.
 4) See parts list for component part numbers.

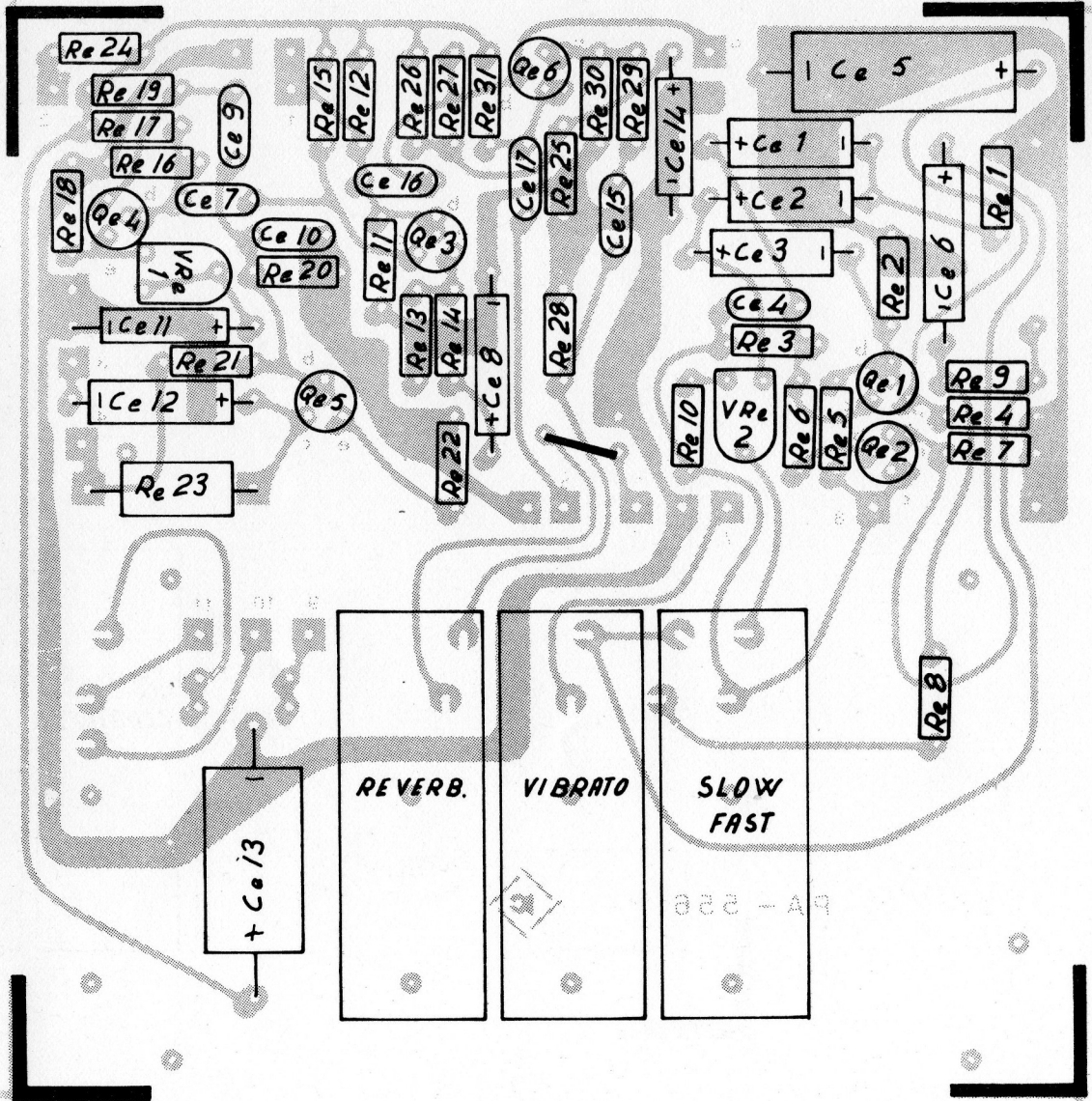
POWER SUPPLY



6449/1124601 (PA-355)

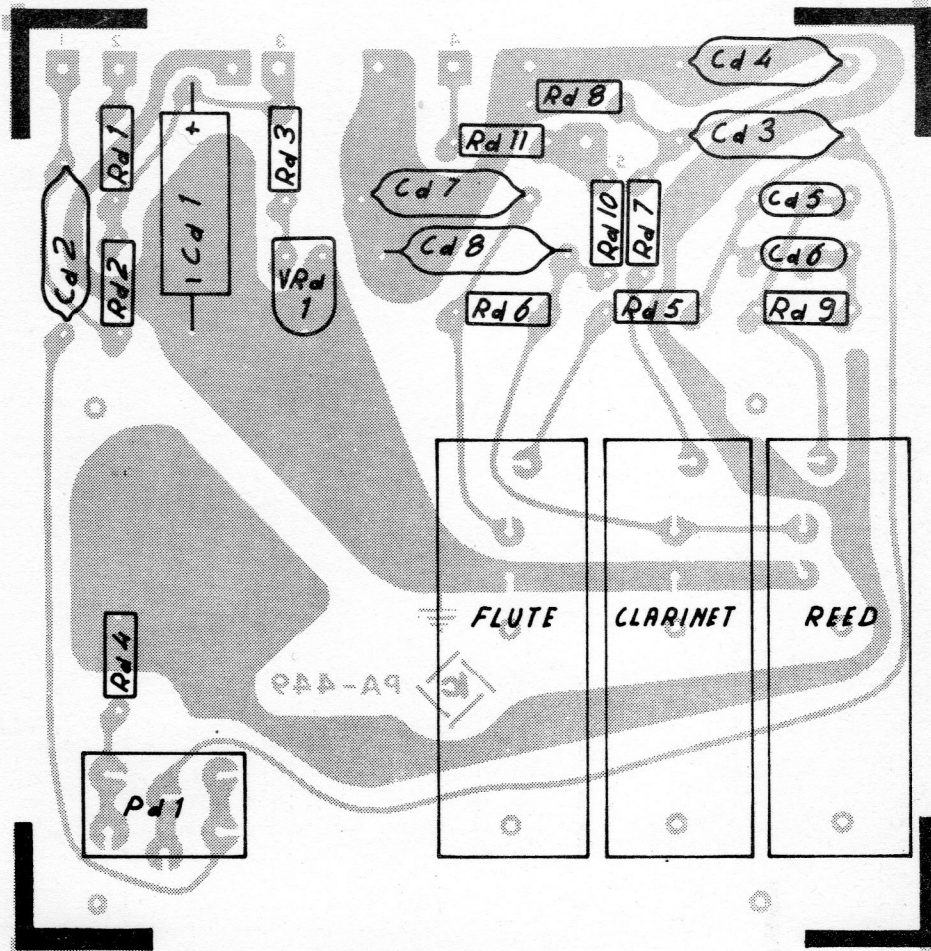
N.B.: ALL D.C. VOLTAGES MEASURED TO GROUND WITH A VOLTMETER 20000.Ω/V

<https://www.servicemanual.altervista.org>



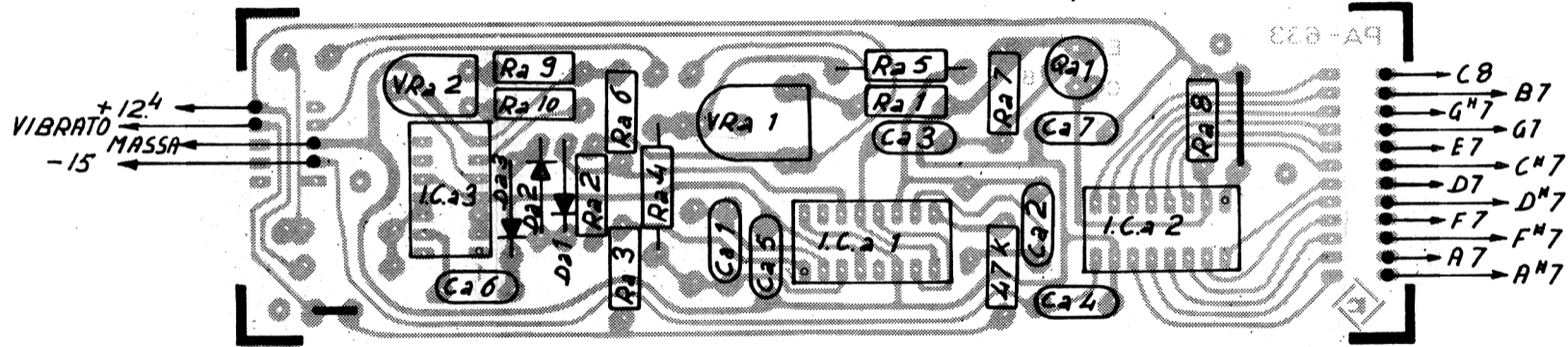
L.M. FILTERS

PA-449/1



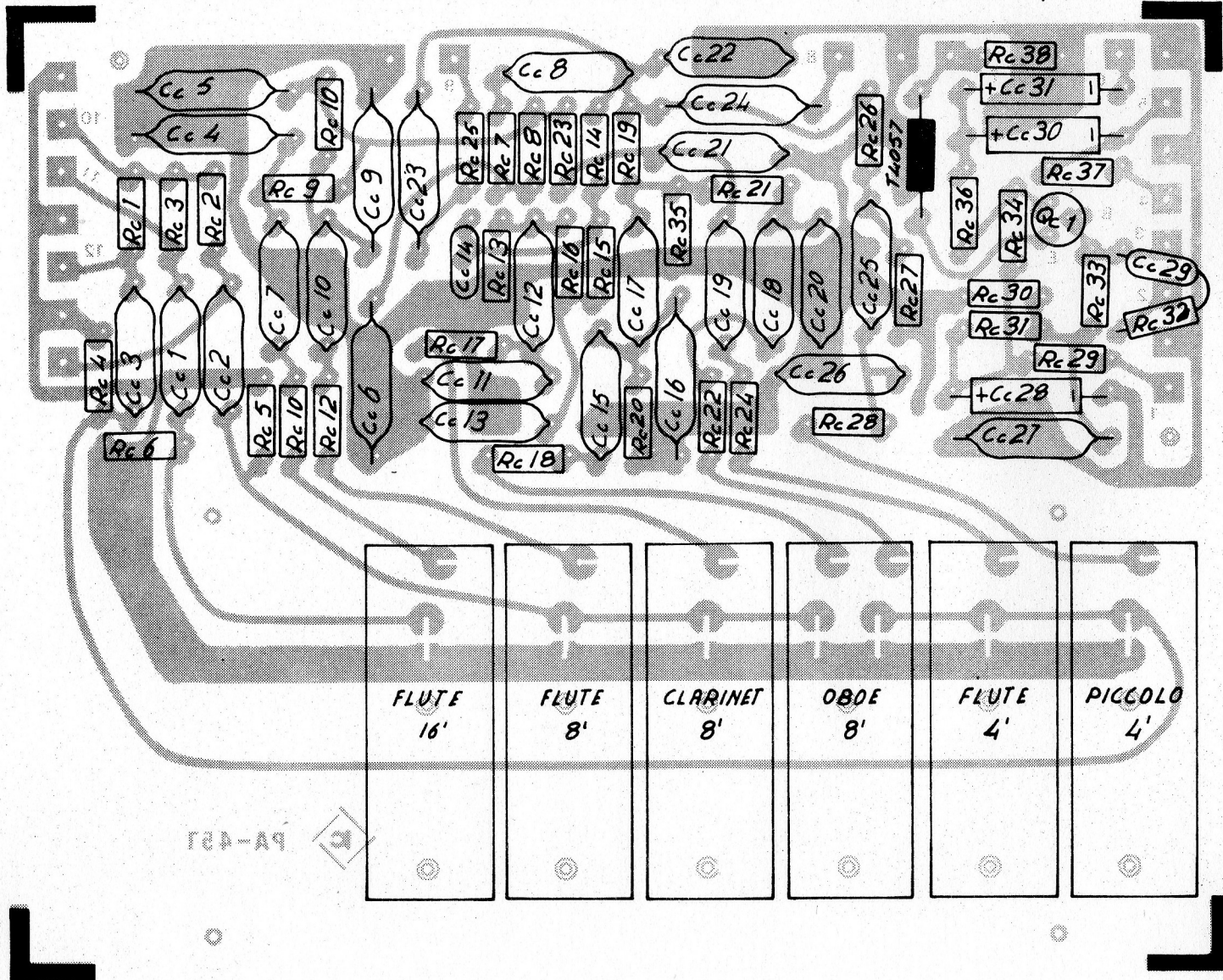
TONE GENERATOR

PA-633



U.M. FILTERS

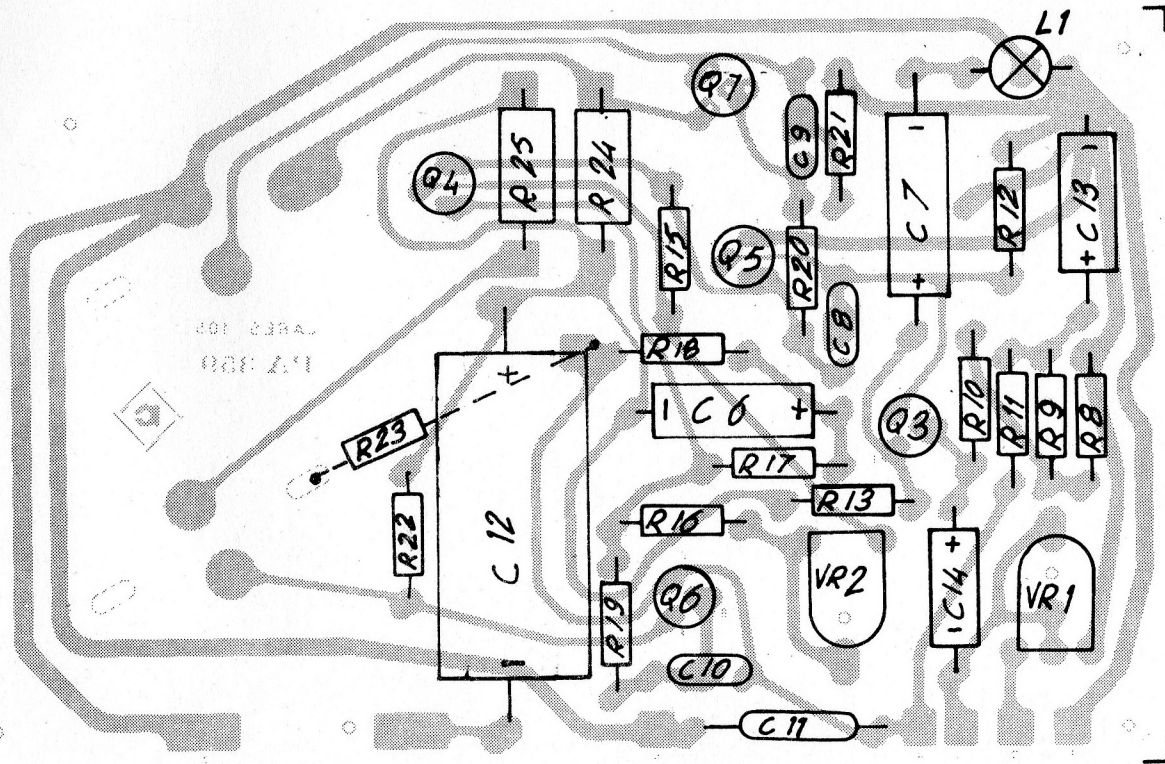
PA-451/1

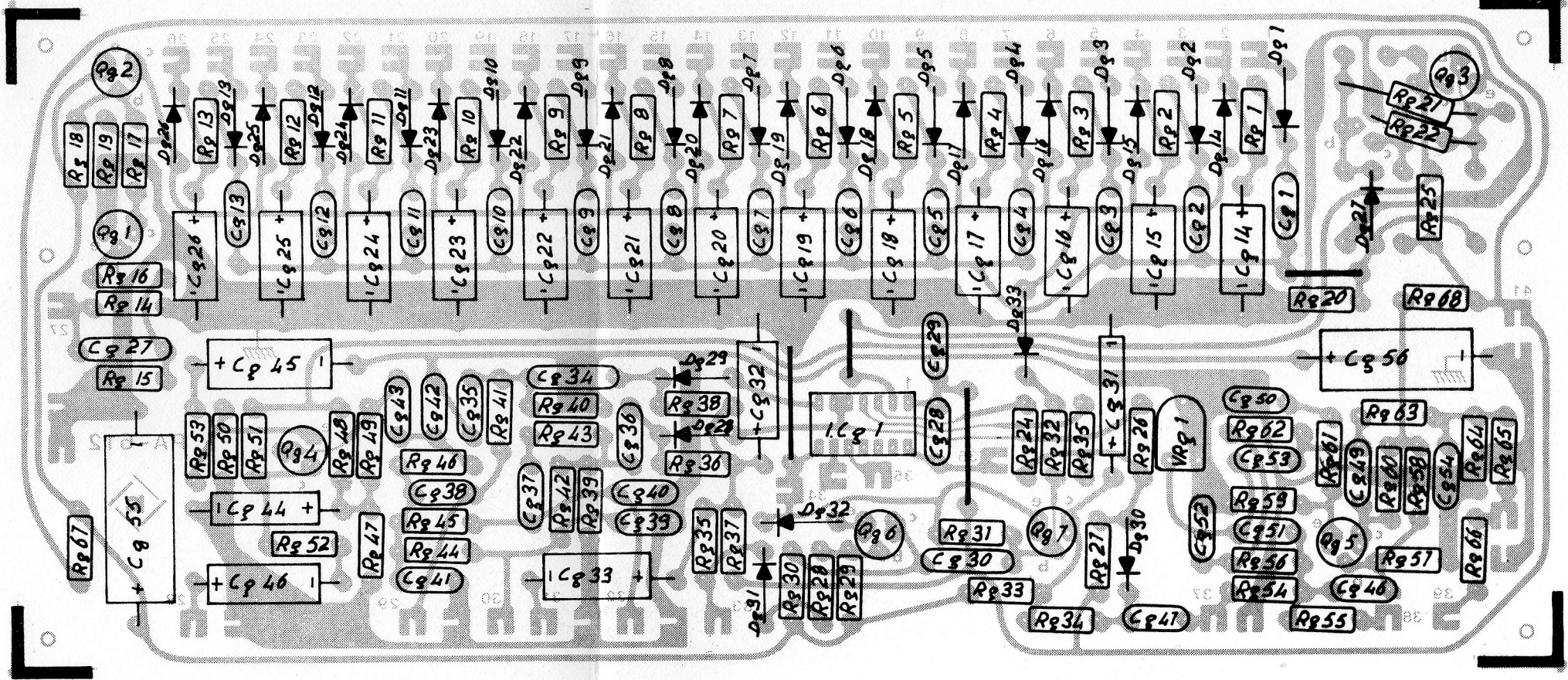


PA-451

POWER AMPLIFIER

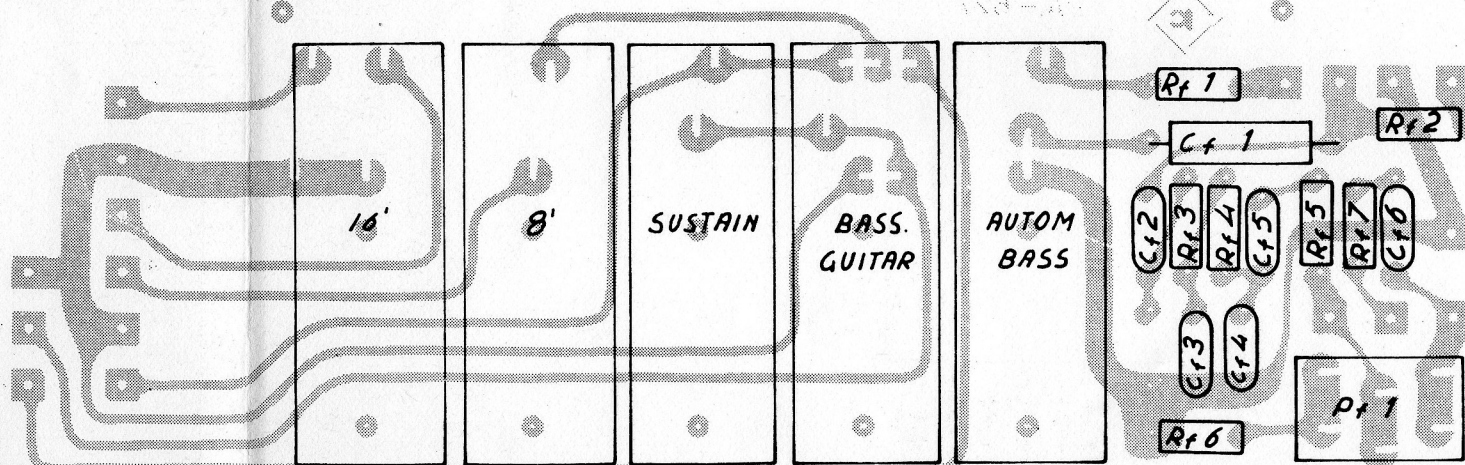
PA-359/1





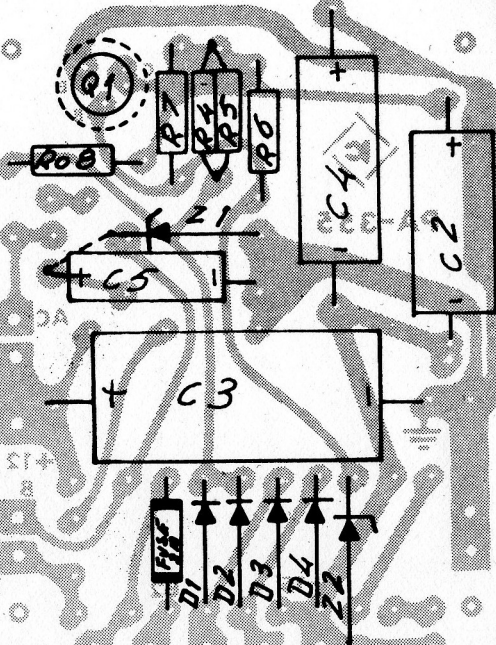
BASS FILTER

PA-627



VOLTAGE REGULATOR

PA-355



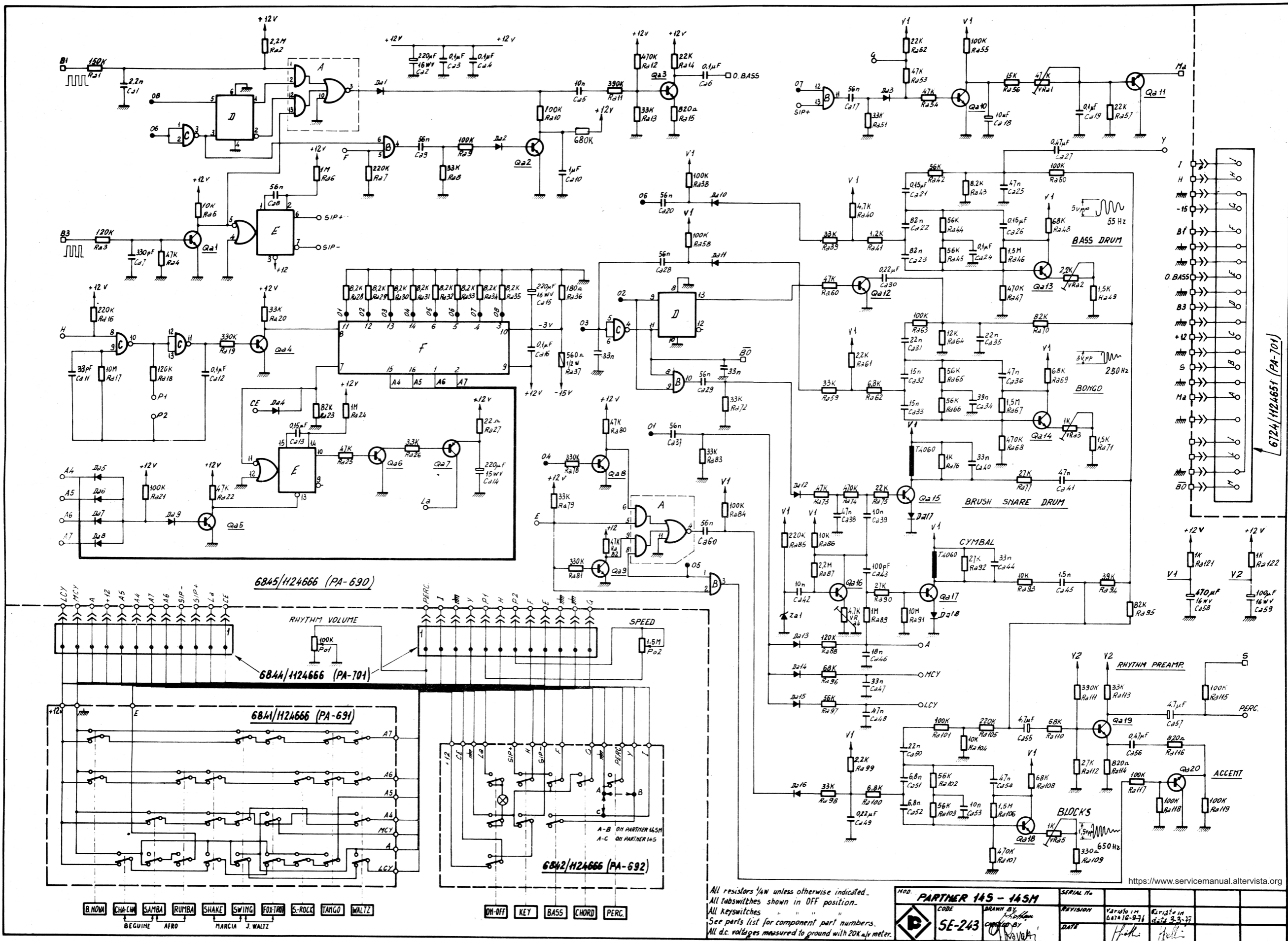
Model 250

TRANSISTORS (Q) & DIODES (D) LIST

①

Schem.Ref.	Circuit	Type	Part Code
<u>CHASSIS</u>	<u>POWER SUPPLY CHASSIS (DWG 3/SE 218)</u>		<u>8000/1124601</u>
Q 2	Series Stabilizer.....	RCA 2N3055..... Westinghouse 2N3055... Westinghouse 156-043.. Solitron H 9340.....	W/1801 W/1801 W/1800 W/1800
D 2	Rectifier Birdge.....	ITT B 40-C2200.... SIEMENS B 40-C2200.... AEG B 40-C2200....	B/1201
<u>PA 355</u>	<u>VOLTAGE REGULATOR BOARD (DVG 3/SE 218)</u>		<u>6449/1124601</u>
Q 1	Series Stabilizer.....	SGS BC 286.....	W/1601
D 1	Rectifier Diode (Bridge).....	MISTRAL SFD 182..... TEXAS 1N 914.....	B/1002
Z 1	Voltage Reference-Diode Zener (13V-1W)	IR 1 Z 13..... MOTOROLA 1N4743 A.....	B/1418
Z 2	Voltage Reference-Diode Zener (15V-400mV)	ITT ZPD 15..... MOTOROLA 1N5245-B.....	B/1319
<u>PA 359-1</u>	<u>POWER AMPLIFIER BOARD (DVG 3/SE 218)</u>		<u>6630/1124601</u>
Q 3	Input preamplifier PNP.....	SGS 1W 9640.....	W/1500
Q 4	Temperature Compensator.....	MISTRAL BC 207 A or B. BC 209 B or C.	W/1401 W/1407 - W/1410
Q 5	Driver Amplifier NPN.....	SGS BC 286.....	W/1601
Q 6	Driver NPN.....	SGS BC 286.....	W/1601
Q 7	Driver PNP.....	SGS BC 287.....	W/1702
Q 8 - Q 9	Power Transistors.....	WESTINGHOUSE 156-043.. SOLITRON H 9340.....	W/1800 W/1800
<u>PA 451-1</u>	<u>UPPER MANUAL FILTER BOARD (DWG 2/SE 218)</u>		<u>6728/1124661</u>
Q c 1	Output Preamplifier.....	BC 209 B, red dot..... BC 239 B, red dot.....	W/1413

Schem.Ref.	Circuit	Type	Part Code	
<u>PA 633</u>	<u>TONE GENERATOR (DWG 1/SE 218)</u>		<u>6729/1124661</u>	
I.C.a1	Oscillator.....	SN 29730 N.....	W/1009	
I.C.a2	Divider.....	G.I.E. AY-I-0212.....	W/1105	
I.C.a3	Voltage Regulator.....	SN 72723 N.....	W/1209	
Q a 1	Buffer.....	BC 208-B-C.....	W/1404	
Da1-Da3	Diodes.....	D 525 B - BA 130.....	B/1000-B/1003	
<u>PA 556-2</u>	<u>REVERB. VIBRATO (DWG 1/SE 218)</u>		<u>6720/1124661</u>	
Q e 1	Vibrato Oscillator.....	} BC 109 B or C.....	W/1409-W/1407	
Q e 2	Vibrato Buffer.....			BC 209 B or C.....
Q e 5	Reverberation Driver.....	SGS BC 286 (BC/142).....	W/1601	
Q e 6	Reverberation Preamplifier	BC 109 B or C, red dot.. BC 209 B or C, red dot..	W/1415-W/1413	
Q e 3	Reverberation Preamplifier	BC 109 B or C.....	W/1409-W/1407	
Q e 4		BC 209 B or C.....		
<u>PA 612</u>	<u>SUSTAIN PEDALBOARD (DWG 2/SE 218)</u>		<u>6716/1124661</u>	
I.C.g1	Divider.....	G.I.E. AY-1-5050.....	W/1100-W/1101	
Q g 1	Pulse Amplifier.....	} BC 208-B-C.....	W/1404	
Qg3-Qg6	Buffers.....			BC 209-B.....
Q g 7	Modulator.....			
Q g 2	Reset.....	BC 287.....	W/1702	
Q g 4	Preamplifier.....	BC 209-B red dot..... BC 109-B red dot.....	W/1413 W/1415	
Q g 5	Bass Guitar Filter.....	BC 209-B.....	W/1407	
Dg1+Dg13	Diodes.....	D 525 B - BA 130.....	B/1000-B/1003	
Dg14+Dg26	Diodes.....	1N 914 - 1N 4148.....	B/1002	
Dg27+Dg33	Diodes.....	D 525 B - BA 130.....	B/1000-B/1003	
<u>PA 447</u>	<u>UPPER MANUAL KEYSWITCH BOARD (DWG 1/SE 218)</u>		<u>6519/1124561</u>	
I.C.1+I.C.8	Integrated Frequency Divider	G.I.E.....	W/1101-W/1100	
<u>PA 452</u>	<u>LOWER MANUAL KEYSWITCH BOARD (DWG 2/SE 218)</u>		<u>6518/1124561</u>	
I.C. 1	Integrated Frequency Divider	G.I.E.....	W/1101-W/1100	



All resistors 1/4W unless otherwise indicated.
 All tabswitches shown in OFF position.
 All keyswitches " " "
 See parts list for component part numbers.
 All d.c. voltages measured to ground with 20K Ω meter.

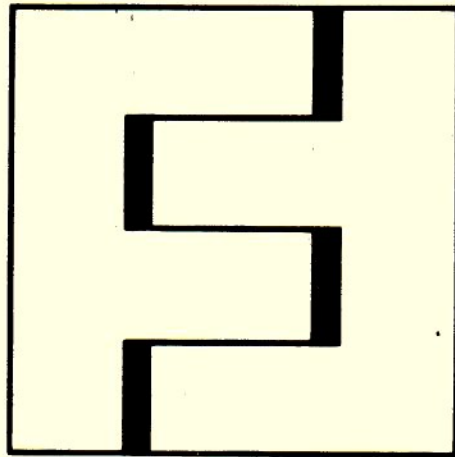
MD: PARTNER 145-145M	SERIAL No.		
CODE SE-243	REVISION	DATE	
DRAWN BY	DESIGNED BY	TESTED BY	
DATE	DATE	DATE	

https://www.servicemanual.altavista.org

PARTNER 14S-14SM TRANSISTORS (Q) & DIODES (D) LIST

①

Schem.Ref.	Circuit	Type	Part Code		
<u>PA 690</u>	<u>RHYTHM GENERATOR & CLOCK (DWG 1/SE 243)</u>		<u>6845/1124666</u>		
A	Dual 2- Wide 2- Input and/ or Invert Gate.....	4085 FAIRCHILD.....	W/1158		
B	Quadr. 2- Input and Gate..	4081 FAIRCHILD.....	W/1156		
C	Quadr. 2- Input Nand Gate.	4011 FAIRCHILD.....	W/1150		
D	Dual D - Flip-Flop.....	4013 FAIRCHILD.....	W/1157		
E	Dual Retriggerable Reset. Monostable Multivibrator..	4528 FAIRCHILD.....	W/1159		
F	Rhythm Generator.....	M 256 BIAG.-S.G.S.....	W/1110		
Qa1	Interface.....	} BC 208-B BC 209-B	W/1404 W/1407		
Qa2-Qa3	Bass Modulator.....				
Qa4	Buffer Oscillator.....				
Qa5	Switch Reset.....				
Qa6	Lamp Driver.....				
Qa8-Qa9	Buffer.....				
Qa10	Chord Modulator.....				
Qa11	Chord Modulator.....			BC 209-C-MISTRAL.....	W/1426
Qa7	Lamp Driver.....			BC 154.....	W/1500
Qa12	Switch.....			} BC 209-B BC 149-B	W/1407 W/1408
Qa13	Bass Drum.....				
Qa14	Bongo Oscillator.....				
Qa15	Brush Snare Drum Filter...				
Qa16	Noise Preamplifier.....				
Qa17	Cymbal Filter.....				
Qa18	Blocks Oscillator.....				
Qa19	Rhythm Preamplifier.....	BC 209-B red dot.....	W/1413		
Qa20	Accent Switch.....	BC 209-C MISTRAL.....	W/1426		
Za1	Noise Generator-Zener Diode	B/1604 - FARFISA.....	B/1604		
Da1+Da18	Diodes.....	D 525 B- BA 130.....	B/1000-B/1003		



FARFISA S.p.A.
IS A SUBSIDIARY
OF LEAR SIEGLER, Inc. 